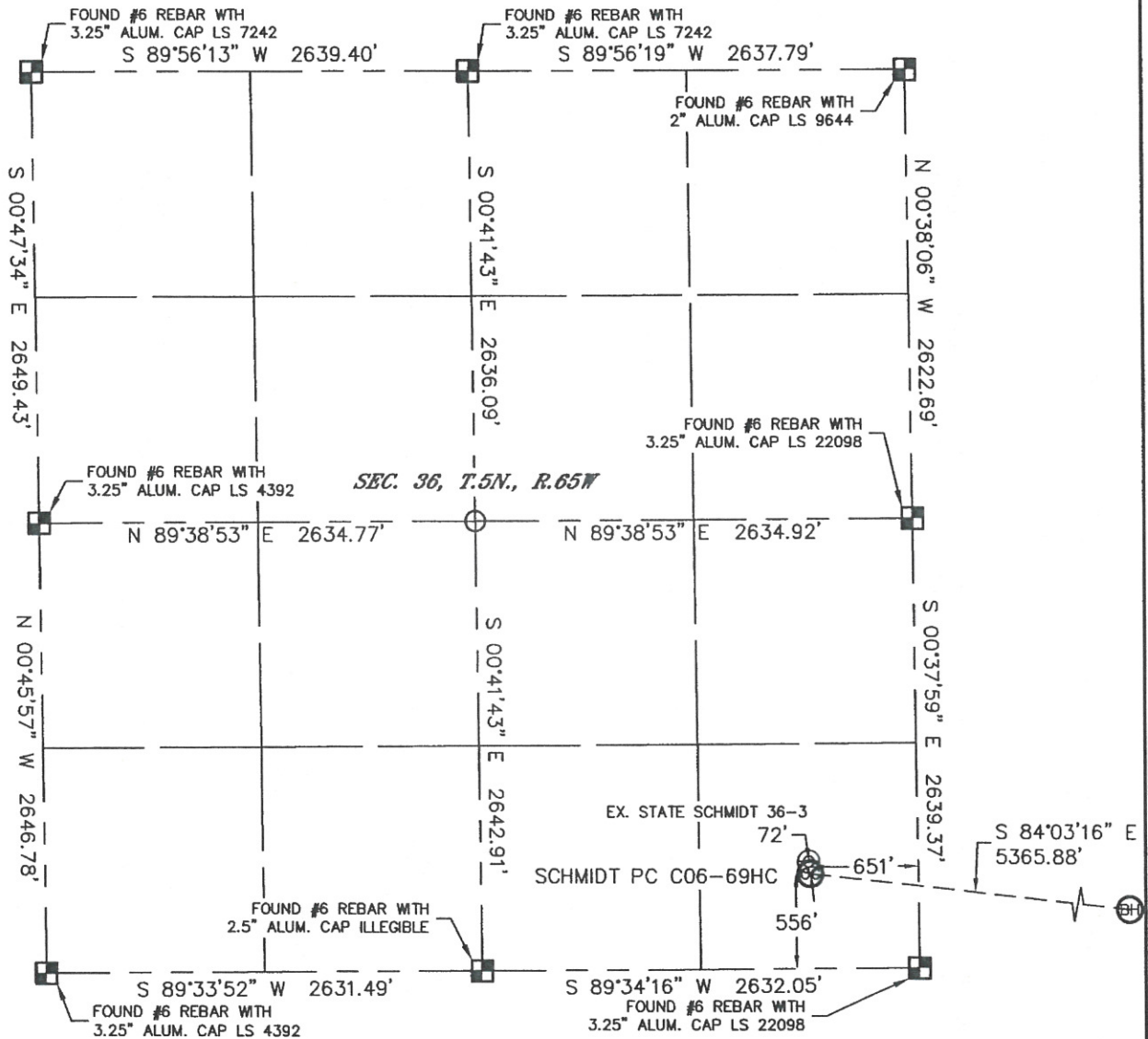


WELL LOCATION CERTIFICATE

SECTION: 36
TOWNSHIP: 5N
RANGE: 65W

THIS MAP DOES NOT REPRESENT A BOUNDARY SURVEY



In accordance with a request from Ryan Antonio with Noble Energy Inc. Lat40°, Inc. has determined the surface location of the SCHMIDT PC C06-69HC to be 556' from the SOUTH line and 651' from the EAST line as measured at right angles from the section lines of Section 36, Township 5 North, Range 65 West and the bottom hole to be 75' from the NORTH line and 535' from the EAST line as measured at right angles from the section lines of Section 6, Township 4 North, Range 64 West of the Sixth Principal Meridian, County of Weld, State of Colorado.

I hereby state that this Well Location Certificate was prepared by me, or under my direct supervision, that the fieldwork was completed on 1/17/11, for and on behalf of Noble Energy Inc. That this is not a Land Survey Plat or an Improvement Survey Plat, and that it is not to be relied upon for establishment of fence, building, or other future improvement lines.

NOTE:

- 1) Bearings shown are Grid Bearings of the Colorado State Plane Coordinate System, North Zone, North American Datum 1983/2007. The lineal dimensions as contained herein are based upon the "U.S. Survey Foot."
- 2) Ground elevations are based on an observed GPS elevation (NAVD 1988 DATUM).
- 3) NEAREST EXISTING WELL: STATE SCHMIDT 36-3 72'
- 4) IMPROVEMENTS: See LOCATION DRAWING for all visible improvements within 400' of disturbed area.
- 5) SURFACE USE: CROP FIELD
- 6) INSTRUMENT OPERATOR: BRIAN BRINKMAN

NOTE

According to Colorado law, you must commence any legal action based upon any defect in this W.L.C. within three years after you discover such defect. In no event, may any action based upon any defect in this survey be commenced more than ten years after the date of the certificate shown hereon. (13-80-105 C.R.S.)

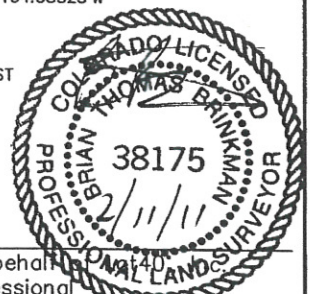
LEGEND

- = ALIQUOT MONUMENT AS DESCRIBED
- = CALCULATED POSITION

SURFACE LOCATION
LATITUDE: 40.34994°N
LONGITUDE: 104.60437°W
PDOP: 1.6
ELEV: 4775
1/4, 1/4: SE1/4SE1/4

BOTTOM HOLE
LATITUDE: 40.34827°N
LONGITUDE: 104.58525°W

NEAREST PROPERTY LINE: 235' SOUTHWEST



SHEET 1 of 2

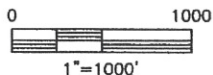
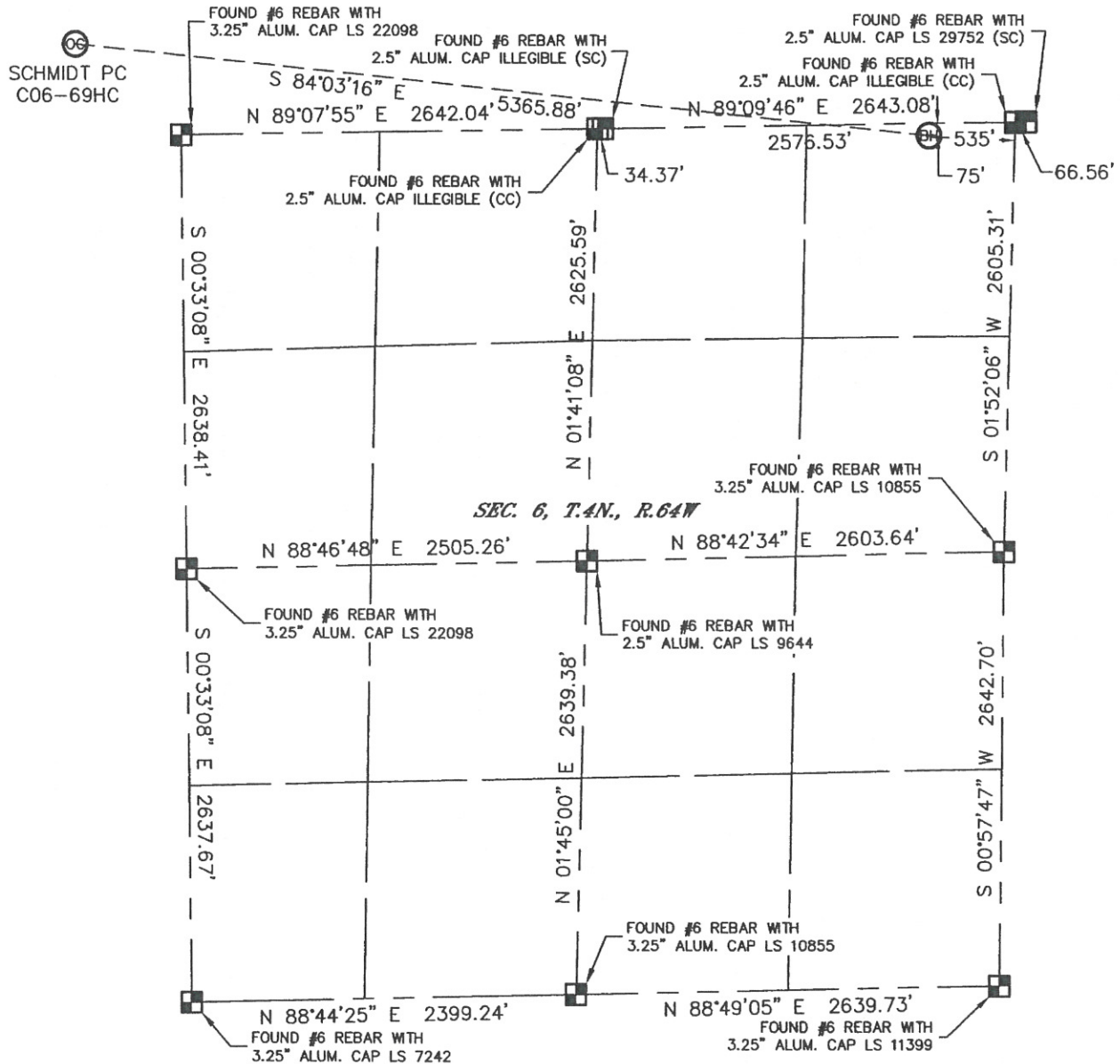
Brian T. Brinkman—On behalf of
Colorado Licensed Professional
Land Surveyor No. 38175

PROJECT: 2011012

WELL LOCATION CERTIFICATE

THIS MAP DOES NOT REPRESENT A BOUNDARY SURVEY

SECTION: 36
TOWNSHIP: 5N
RANGE: 65W



NOTE

According to Colorado law, you must commence any legal action based upon any defect in this W.L.C. within three years after you discover such defect. In no event, may any action based upon any defect in this survey be commenced more than ten years after the date of the certificate shown hereon. (13-80-105 C.R.S.)

LEGEND

- = ALIQUOT MONUMENT AS DESCRIBED
- = CALCULATED POSITION



SHEET 2 OF 2

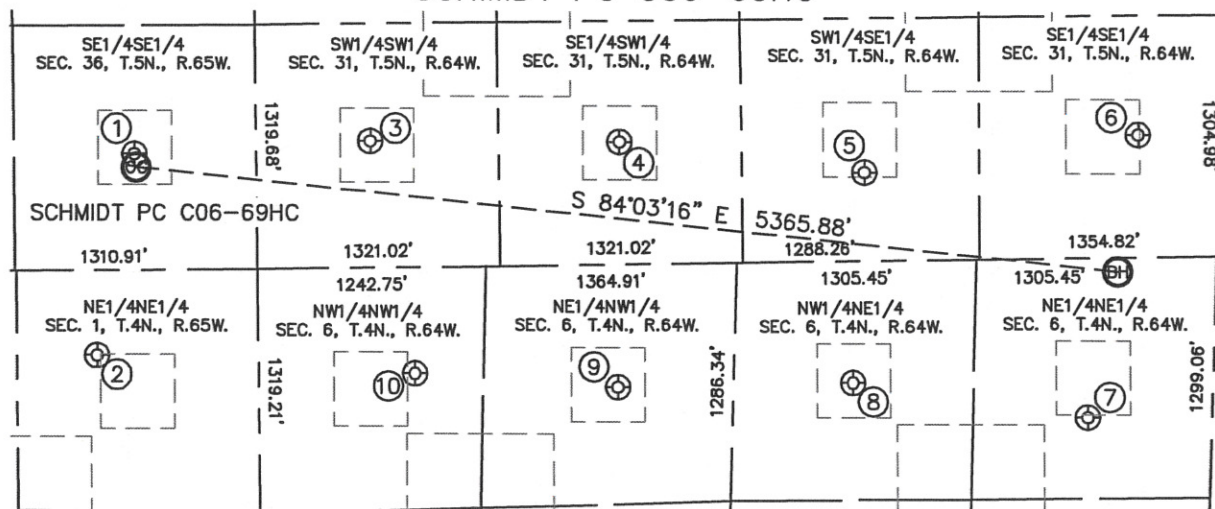
Brian T. Brinkman—On behalf of Lat40°, Inc.
Colorado Licensed Professional
Land Surveyor No. 38175

PROJECT#: 2011012

SITE SKETCH

SCHMIDT PC C06-69HC

SECTION: 36
TOWNSHIP: 5N
RANGE: 65W



①

STATE SCHMIDT 36-3
SE1/4SE1/4
627' FSL
660' FEL
LAT-40.35014°N
LONG-104.60440°W
PDOP:1.0
ELEV: 4774

②

SCHISSLER 1-11
NE1/4NE1/4
457' FNL
875' FEL
LAT-40.34716°N
LONG-104.60517°W
PDOP:2.1
ELEV: 4805

③

GEMINI UPRR B31-13
SW1/4SW1/4
683' FSL
622' FNL
LAT-40.35030°N
LONG-104.59980°W
PDOP:1.2
ELEV: 4790

④

GEMINI B31-14
SE1/4SW1/4
661' FSL
1980' FNL
LAT-40.35025°N
LONG-104.59493°W
PDOP:1.8
ELEV: 4807

⑤

OCOMA UPRR LEASE
B31-15
SW1/4SE1/4
478' FSL
1972' FEL
LAT-40.34977°N
LONG-104.59016°W
PDOP:1.9
ELEV: 4793

⑥

OCOMA B31-16
SE1/4SE1/4
662' FSL
482' FEL
LAT-40.35029°N
LONG-104.58481°W
PDOP:1.3
ELEV: 4785

⑦

WILMOTH 6-2
NE1/4NE1/4
859' FNL
673' FEL
LAT-40.34611°N
LONG-104.58587°W
PDOP:1.3
ELEV: 4757

⑧

WILMOTH 6-3
NW1/4NE1/4
656' FNL
1953' FEL
LAT-40.34666°N
LONG-104.59043°W
PDOP:2.4
ELEV: 4778

⑨

ARD C6-3J
NE1/4NW1/4
661' FNL
1955' FNL
LAT-40.34662°N
LONG-104.59502°W
PDOP:2.4
ELEV: 4798

⑩

ARD 11-6
NW1/4NW1/4
573' FNL
851' FNL
LAT-40.34685°N
LONG-104.59898°W
PDOP:2.0
ELEV: 4813

