

# Manzano LLC

## Magnino 2 Fee #1 Huerfano Co., CO

### SECTION DETAILS

Sec	MD	Inc	Azi	TVD	+N/-S	+E/-W	DLeg	TFace	VSec	Target
1	1197.00	5.35	190.91	1195.03	-59.08	-18.47	0.00	0.00	51.93	
2	1270.00	5.35	190.91	1267.72	-65.76	-19.75	0.00	0.00	57.19	
3	1647.33	41.67	231.46	1608.92	-164.78	-125.02	10.00	44.93	201.42	
4	5007.54	41.67	231.46	4119.11	-1556.54	-1872.29	0.00	0.00	2434.81	
5	5424.20	0.00	0.00	4500.00	-1646.85	-1985.66	10.00	180.00	2579.72	
6	8924.20	0.00	0.00	8000.00	-1646.85	-1985.66	0.00	0.00	2579.72	Pbhl

### WELL DETAILS

Name	+N/-S	+E/-W	Northing	Easting	Latitude	Longitude	Slot
Magnino 2 Fee #1	0.00	0.00	1294131.90	3122156.81	37°28'25.302N	105°04'44.692W	N/A

### TARGET DETAILS

Name	TVD	+N/-S	+E/-W	Latitude	Longitude	Shape
Pbhl	8000.00	-1646.85	-1985.66	37°28'09.019N	105°05'09.323W	Point

### FIELD DETAILS

Huerfano Co., CO (NAD 83)

Geodetic System: US State Plane Coordinate System 1983  
Ellipsoid: GRS 1980  
Zone: Colorado, Southern Zone  
Magnetic Model: IGRF2010

System Datum: Mean Sea Level  
Local North: True North

### LEGEND

— Magnino 2 Fee #1, Plan #2  
— Wft Svy



**Weatherford**



Azimuths to True North  
Magnetic North: 8.86°

Magnetic Field  
Strength: 51629nT  
Dip Angle: 64.60°  
Date: 8/12/2010  
Model: IGRF2010

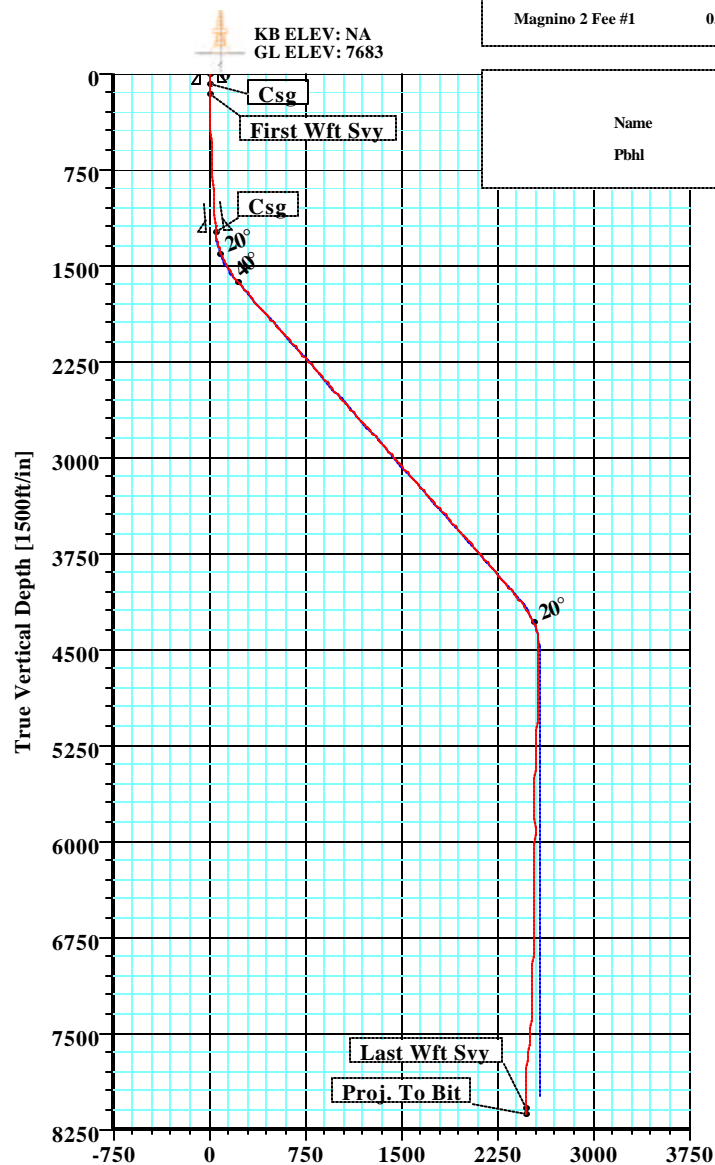
**Total Correction to True North: 8.86°**

### SITE DETAILS

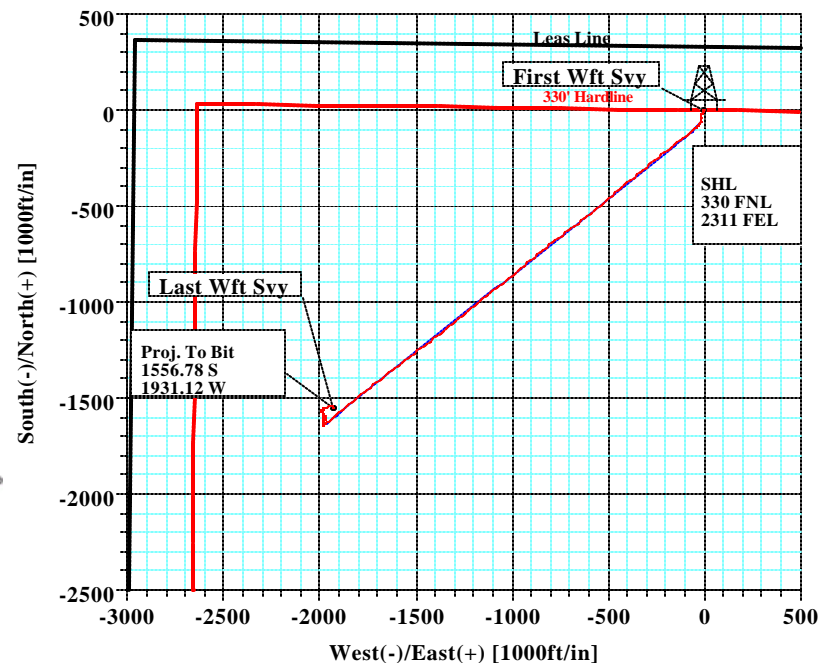
Magnino 2 Fee #1

Site Centre Latitude: 37°28'25.302N  
Longitude: 105°04'44.692W

Ground Level: 7683.00  
Positional Uncertainty: 0.00  
Convergence: 0.26



Vertical Section at 230.33° [1500ft/in]



### Survey: Wft Svy (Magnino 2 Fee #1/1)

No	MD	Inc	Az	TVD	+N/-S	+E/-W	DLeg	TFace	VSec
213	9060.00	2.74	223.31	8134.45	-1556.78	-1931.12	0.00	0.00	2480.24

### Survey: Wft Svy (Magnino 2 Fee #1/1)

Created By: Russell W. Joyner

Date: 10/25/2010