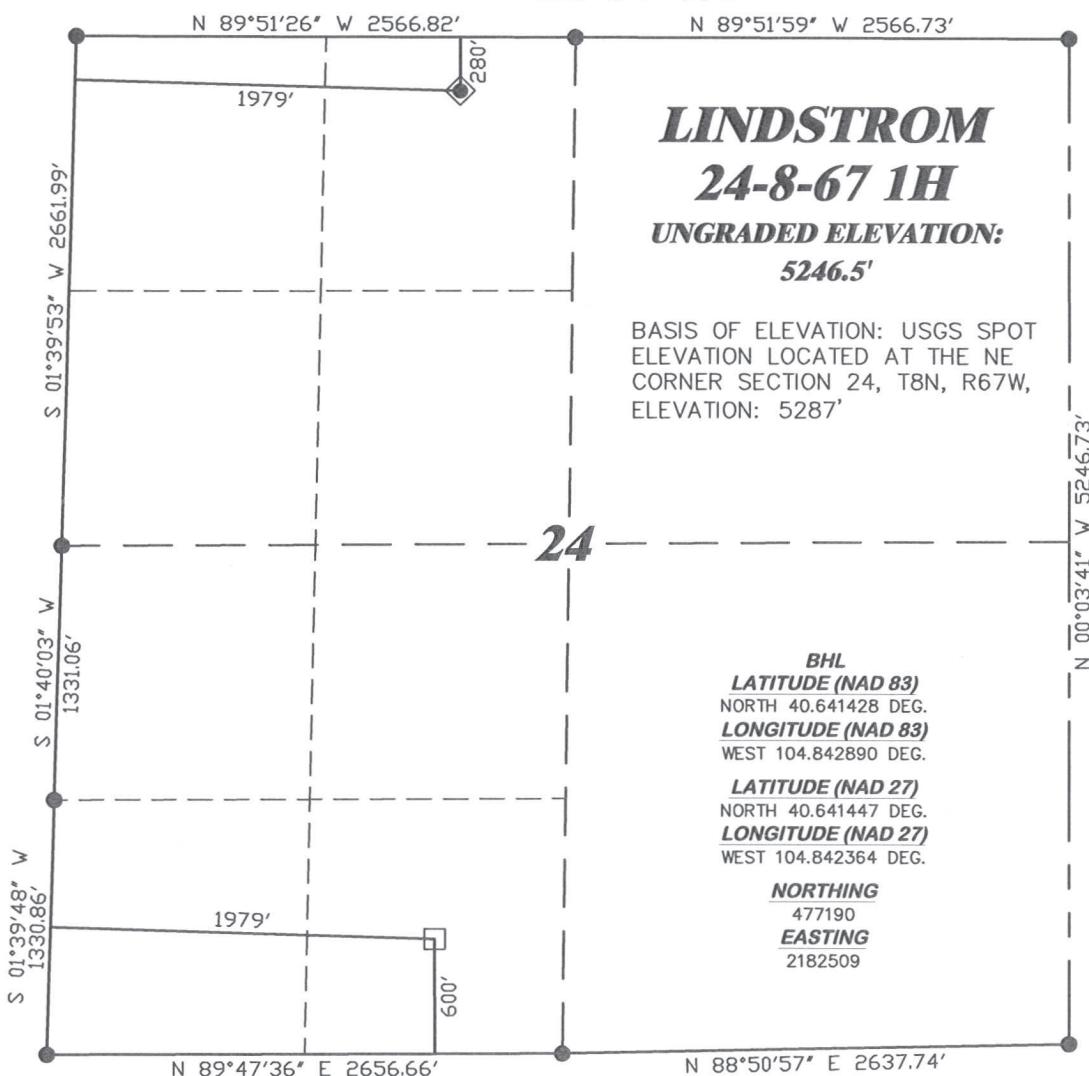


R. 67 W.



SCALE 1" = 1000'

T. 8 N.

**LINDSTROM
24-8-67 1H**

**UNGRADED ELEVATION:
5246.5'**

BASIS OF ELEVATION: USGS SPOT
ELEVATION LOCATED AT THE NE
CORNER SECTION 24, T8N, R67W,
ELEVATION: 5287'

LATITUDE (NAD 83)

NORTH 40.653584 DEG.

LONGITUDE (NAD 83)

WEST 104.842306 DEG.

LATITUDE (NAD 27)

NORTH 40.653603 DEG.

LONGITUDE (NAD 27)

WEST 104.841780 DEG.

NORTHING

481619.25

EASTING

2182638.58

BASIS OF BEARING/DATUM

SPCS CO NORTH NAD 27
BASED ON NGS TRIANGULATION
STATION "DOVER"

BHL
LATITUDE (NAD 83)
NORTH 40.641428 DEG.
LONGITUDE (NAD 83)
WEST 104.842890 DEG.

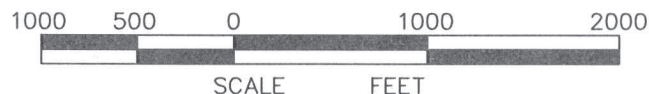
LATITUDE (NAD 27)
NORTH 40.641447 DEG.
LONGITUDE (NAD 27)
WEST 104.842364 DEG.

NORTHING
477190
EASTING
2182509

NOTES

PRAIRIE LANDS
NO EXISTING FEATURES WITHIN
400' RADIUS OF WELL SITE.

GPS OPERATOR PAUL ORME
OBSERVED A PDOP OF 2.4.
ALL GPS OBSERVATIONS ARE IN
COMPLIANCE WITH COGCC RULE No.215.



SURVEYOR'S STATEMENT

I, CLEMENT R. WILLIAMS, OF ROCK SPRINGS, WYOMING, HEREBY STATE: THIS MAP WAS MADE FROM NOTES TAKEN DURING AN ACTUAL FIELD SURVEY DONE UNDER MY DIRECT SUPERVISION ON JULY 21, 2011, AND THAT THIS PLAT CORRECTLY SHOWS THE LOCATION OF LINDSTROM 24-8-67 1H AS STAKED ON THE GROUND.

LEGEND

- ◆ WELL LOCATION
- BOTTOM HOLE LOC. (APPROX)
- FOUND MONUMENT
- ▲ PREVIOUSLY FOUND MONUMENT



RIFFIN & ASSOCIATES, INC.
1414 ELK ST., ROCK SPRINGS, WY 82901

(307) 362-5028

**PLAT OF DRILLING LOCATION
FOR
CHESAPEAKE ENERGY, LLC.**

**280' F/NL & 1979' F/WL, NENW, SECTION 24,
T. 8 N., R. 67 W., 6th P.M.
WELD COUNTY, COLORADO**

DRAWN: 7/22/11 - MMM

SCALE: 1" = 1000'

REVISED: 7/22/11 - MMM

DRG JOB No. 18647

REVISED WELL NAME

EXHIBIT 1