
XTO ENERGY INC EBUSINESS

Apache Canyon 08-06

Las Animas County , Colorado

Cement Conductor Casing

11-Jul-2011

Job Site Documents

The Road to Excellence Starts with Safety

Sold To #: 353810	Ship To #: 2865101	Quote #:	Sales Order #: 8313864
Customer: XTO ENERGY INC EBUSINESS	Customer Rep:		
Well Name: Apache Canyon	Well #: 08-06	API/UWI #:	
Field:	City (SAP): TRINIDAD	County/Parish: Las Animas	State: Colorado
Contractor: Pense Drilling	Rig/Platform Name/Num: 19		
Job Purpose: Cement Conductor Casing			
Well Type: Development Well	Job Type: Cement Conductor Casing		
Sales Person: FLING, MATTHEW	Srv Supervisor: SANFORD, DALE	MBU ID Emp #: 219527	

Job Personnel

HES Emp Name	Exp Hrs	Emp #	HES Emp Name	Exp Hrs	Emp #	HES Emp Name	Exp Hrs	Emp #
BANUELOS, GUADALUPE	2	372277	PAUMEN, CORD Anthony	2	453759	Pliness, Ryan	2	490745
SANFORD, DALE A	2	219527						

Equipment

HES Unit #	Distance-1 way	HES Unit #	Distance-1 way	HES Unit #	Distance-1 way	HES Unit #	Distance-1 way
10025024	25 mile	10824253C	25 mile	11518550	25 mile	11527037	25 mile
11562544C	25 mile						

Job Hours

Date	On Location Hours	Operating Hours	Date	On Location Hours	Operating Hours	Date	On Location Hours	Operating Hours
7-11-11	2	1						
TOTAL			Total is the sum of each column separately					

Job

Job Times

Formation Name	Formation Depth (MD)	Top	Bottom	Form Type	Job depth MD	Job Depth TVD	Water Depth	Perforation Depth (MD)	From	To	Called Out	Date	Time	Time Zone
				BHST	45. ft	45. ft						11 - Jul - 2011	19:00	MST
											On Location	11 - Jul - 2011	19:30	MST
											Job Started	11 - Jul - 2011	19:50	MST
											Job Completed	11 - Jul - 2011	20:18	MST
											Departed Loc	11 - Jul - 2011	21:30	MST

Well Data

Description	New / Used	Max pressure psig	Size in	ID in	Weight lbm/ft	Thread	Grade	Top MD ft	Bottom MD ft	Top TVD ft	Bottom TVD ft
17 1/2" Openhole				11.					46.		
13 3/8" Conductor Casing	Unknown		13.375	12.715	48.				45.		

Tools and Accessories

Type	Size	Qty	Make	Depth	Type	Size	Qty	Make	Depth	Type	Size	Qty	Make
Guide Shoe					Packer					Top Plug			
Float Shoe					Bridge Plug					Bottom Plug			
Float Collar					Retainer					SSR plug set			
Insert Float										Plug Container			
Stage Tool										Centralizers			

Miscellaneous Materials

Gelling Agt	Conc	Surfactant	Conc	Acid Type	Qty	Conc	%
Treatment Fld	Conc	Inhibitor	Conc	Sand Type	Size	Qty	

Fluid Data

Stage/Plug #: 1	Fluid #	Stage Type	Fluid Name	Qty	Qty uom	Mixing Density lbm/gal	Yield ft3/sk	Mix Fluid Gal/sk	Rate bbl/min	Total Mix Fluid Gal/sk
-----------------	---------	------------	------------	-----	---------	------------------------	--------------	------------------	--------------	------------------------

Stage/Plug #: 1

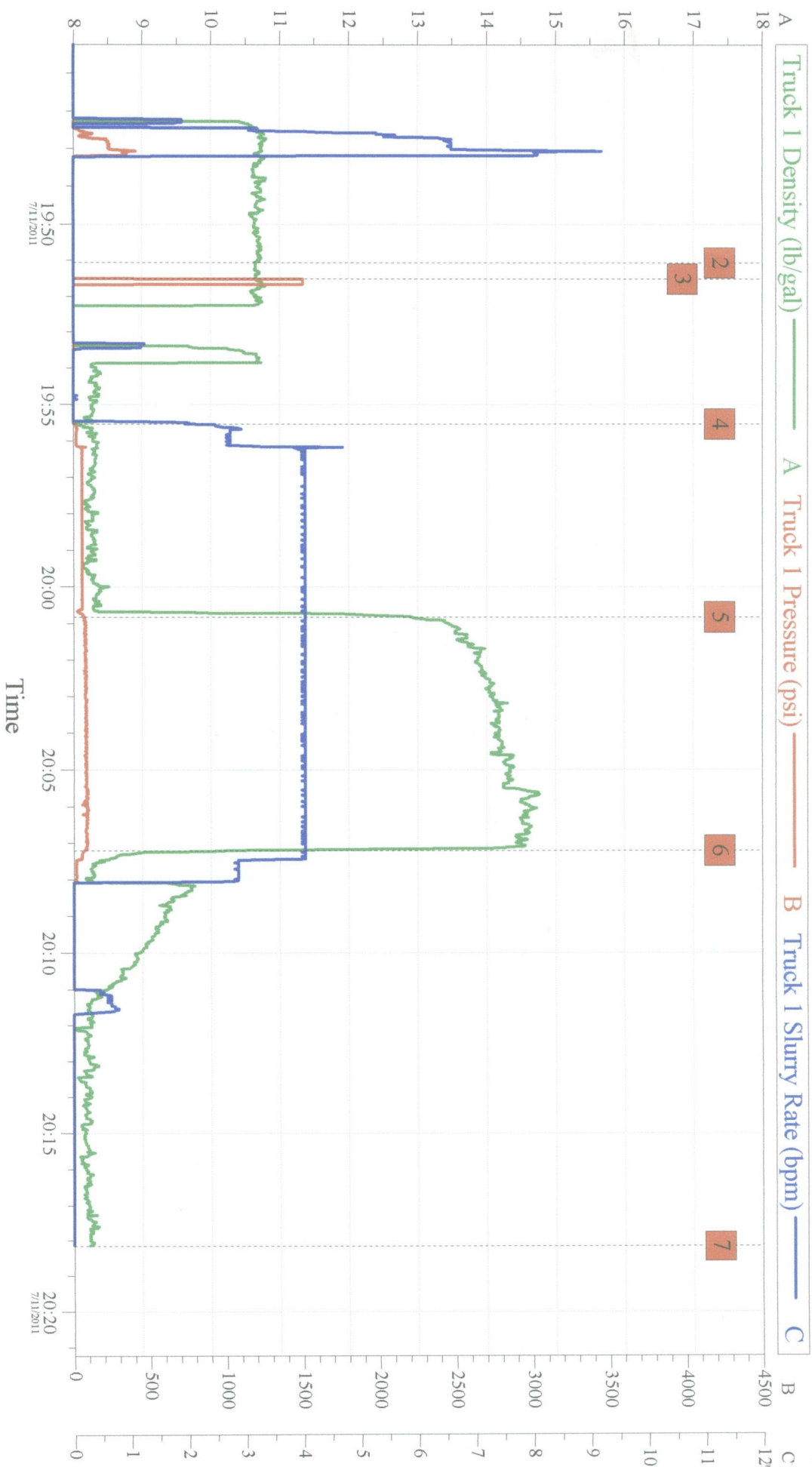
Stage/Plug #: 1									
Fluid #	Stage Type	Fluid Name	Qty	Qty uom	Mixing Density lbm/gal	Yield ft ³ /sk	Mix Fluid Gal/sk	Rate bbl/min	Total Mix Fluid Gal/sk
1	FRESH WATER			bbl	8.33	.0	.0	.0	
2	Trinidad Surface Blend	TRINIDAD SURFACE BLEND - SBM (137081)	88.0	sacks	14.	1.66	7.76	4.0	7.76
	0.125 lbm	POLY-E-FLAKE (101216940)							
	2 %	CAL-SEAL 60, 50 LB BAG (101217146)							
	2 %	ECONOLITE (100001580)							
	5 lbm	GILSONITE, 50 LB BAG (100001618)							
	0.2 %	VERSASET, 55 LB SK (101376573)							
	6 %	SALT, 100 LB BAG (100003652)							
	7.76 Gal	FRESH WATER							
3	DISPLACEMENT			bbl	8.33	.0	.0	.0	
Calculated Values		Pressures		Volumes					
Displacement	3	Shut In: Instant		Lost Returns		Cement Slurry		Pad	
Top Of Cement	surf	5 Min		Cement Returns	9	Actual Displacement		Treatment	
Frac Gradient		15 Min		Spacers		Load and Breakdown		Total Job	
Rates									
Circulating		Mixing		Displacement		Avg. Job			
Cement Left In Pipe	Amount	20 ft	Reason	Shoe Joint					
Frac Ring # 1 @	ID	Frac ring # 2 @	ID	Frac Ring # 3 @	ID	Frac Ring # 4 @	ID		
The Information Stated Herein Is Correct				Customer Representative Signature					

The Road to Excellence Starts with Safety

Sold To #: 353810		Ship To #: 2865101		Quote #:		Sales Order #: 8313864	
Customer: XTO ENERGY INC EBUSINESS				Customer Rep:			
Well Name: Apache Canyon			Well #: 08-06		API/UWI #:		
Field:		City (SAP): TRINIDAD		County/Parish: Las Animas		State: Colorado	
Legal Description:							
Lat:				Long:			
Contractor: Pense Drilling			Rig/Platform Name/Num: 19				
Job Purpose: Cement Conductor Casing						Ticket Amount:	
Well Type: Development Well			Job Type: Cement Conductor Casing				
Sales Person: FLING, MATTHEW			Srv Supervisor: SANFORD, DALE			MBU ID Emp #: 219527	

Activity Description	Date/Time	Cht #	Rate bbl/min	Volume bbl		Pressure psig		Comments
				Stage	Total	Tubing	Casing	
Test Lines	07/12/2011 19:48					1500.0		
Pump Spacer 1	07/12/2011 19:51		4	17			45.0	
Pump Cement	07/12/2011 20:02		4	19			80.0	66 sks Cmt @ 14# 1.65-7.76
Pump Displacement	07/12/2011 20:13		3	3.5			45.0	6 Bbl Cmt to pit
Shut In Well	07/12/2011 20:15						35.0	
Other	07/12/2011 20:45		2	7				Top Off Well w/ 22 Sks Cmt @ 14#
Other	07/12/2011 20:55							3 bbl cmt to surf

XTO AC 08-06 Conductor



Global Event Log

Intersection	T1P	Intersection	T1P	Intersection	T1P
2 Start Job	19:51:04 0.000	3 Test Lines	19:51:31 336.9	4 Pump Water	19:55:32 9.757
5 Pump Cement	20:00:49 72.00	6 Pump Displace	20:07:13 68.06	7 Ending Job	20:18:10 -10.69

Customer: XTO
Well Description: 13 3/8 Cond

Job Date: 11-Jul-2011
UWI:

Sales Order #: 33333333