



<<< Fold Here >>>

Comments

Directions:

The Perforators LLC

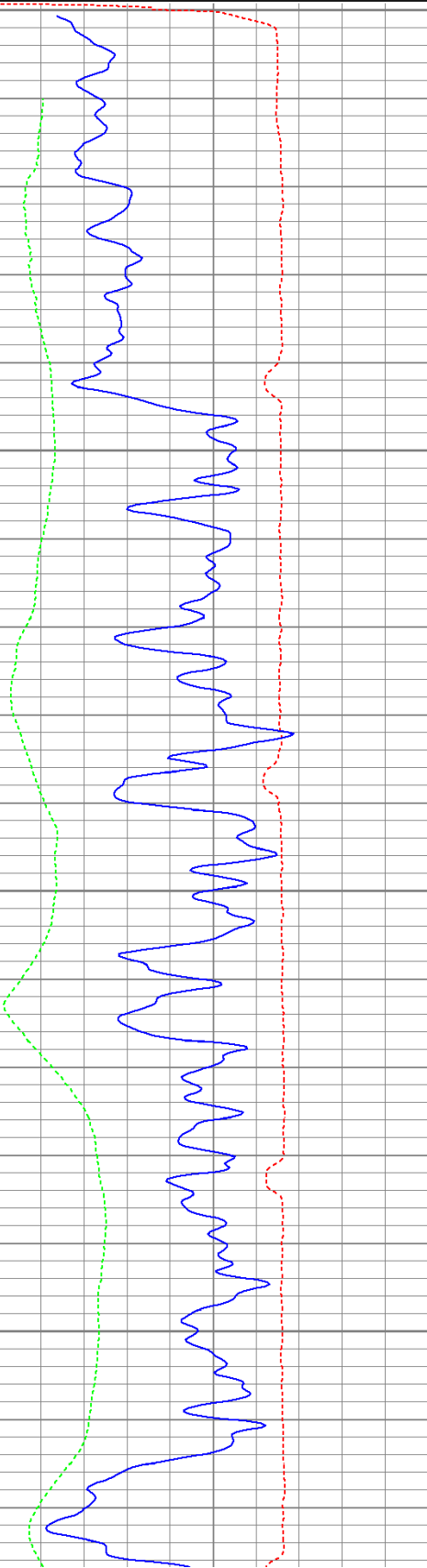
Main Pass (1000 PSI)

Database File: ac08-0671911b.db
Dataset Pathname: pass3
Presentation Format: cbldig
Dataset Creation: Tue Jul 19 10:05:43 2011 by Log Open-Cased 110302
Charted by: Depth in Feet scaled 1:240

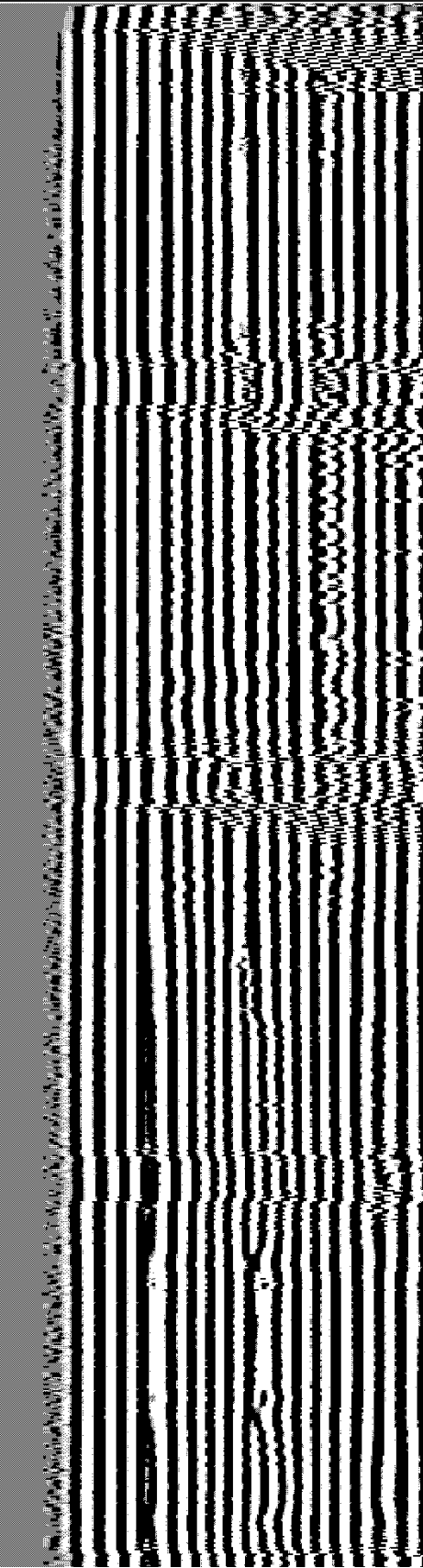
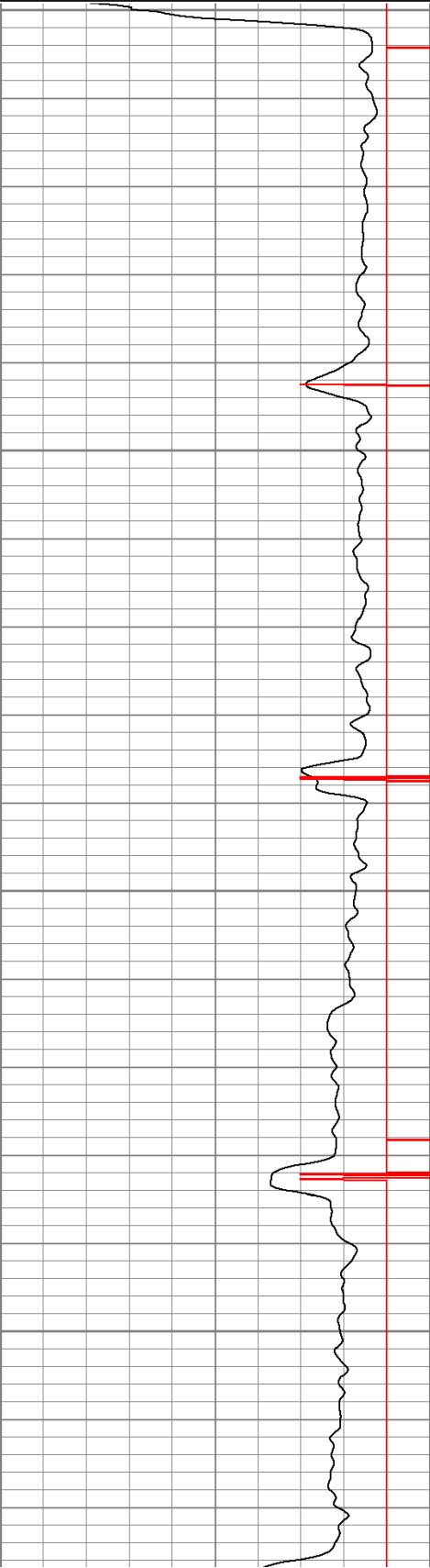
400	Travel Time (usec)	200
0	GR (GAPI)	200
0	DEVI (°)	10

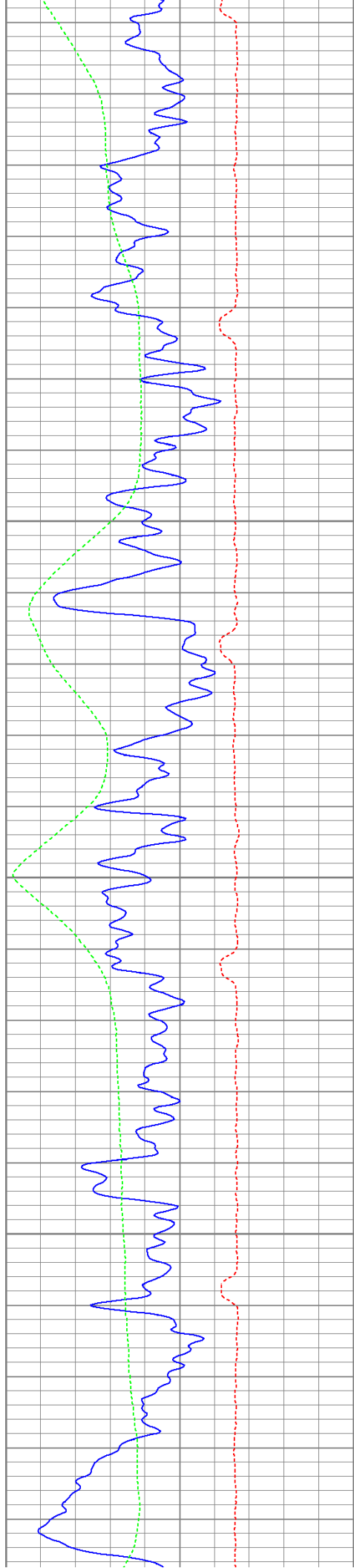
0	Amplitude (mV)	100
9	Collar Locator	-1

200 Variable Density 1200



0
50
100
150



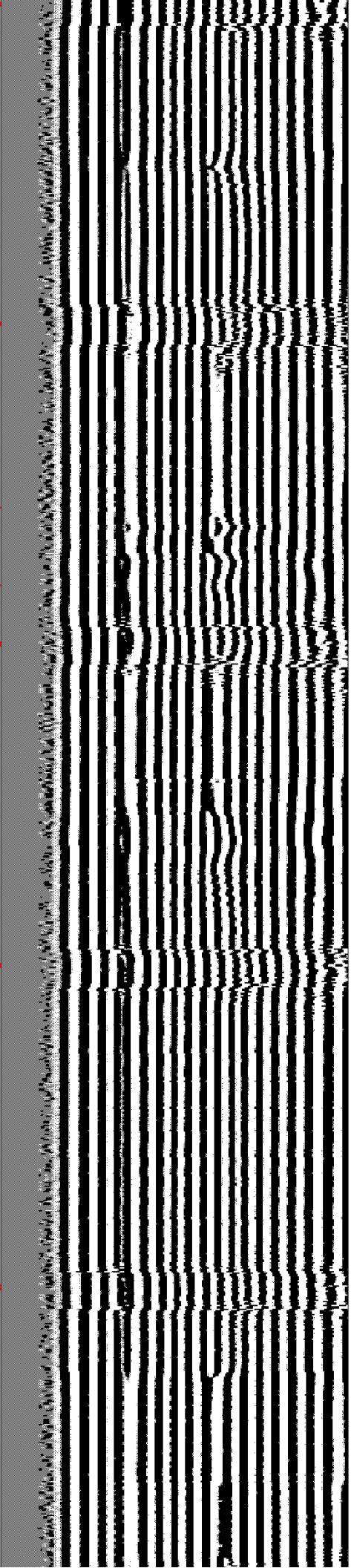
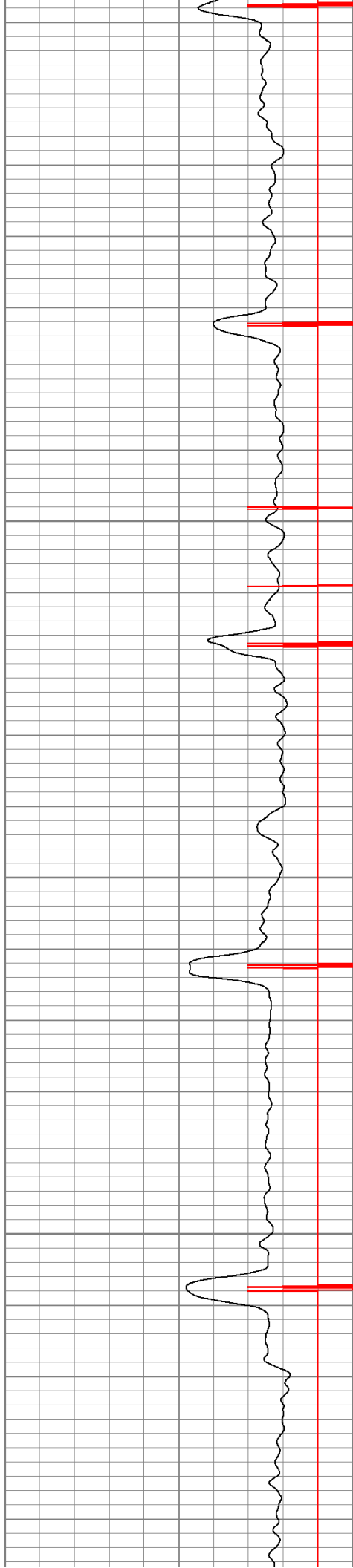


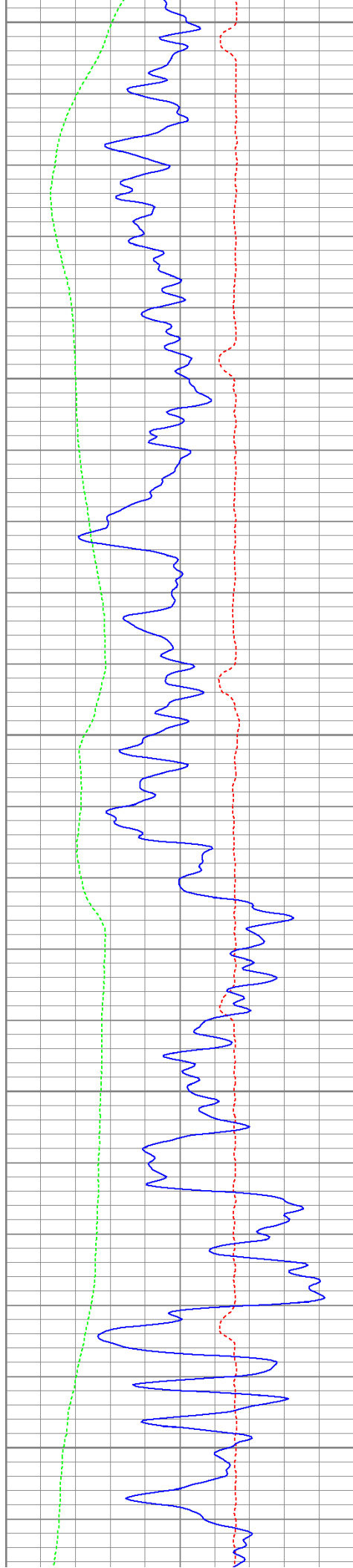
200

250

300

350





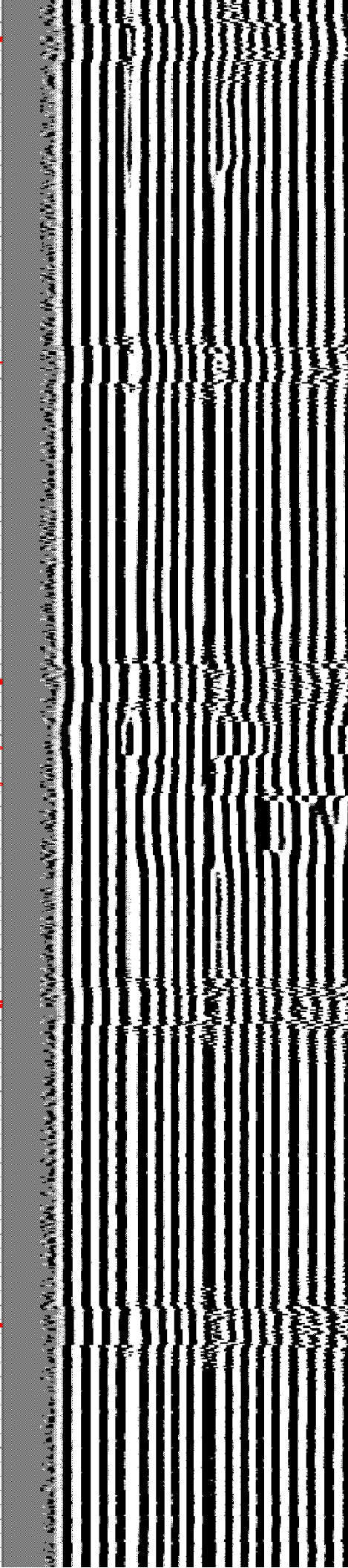
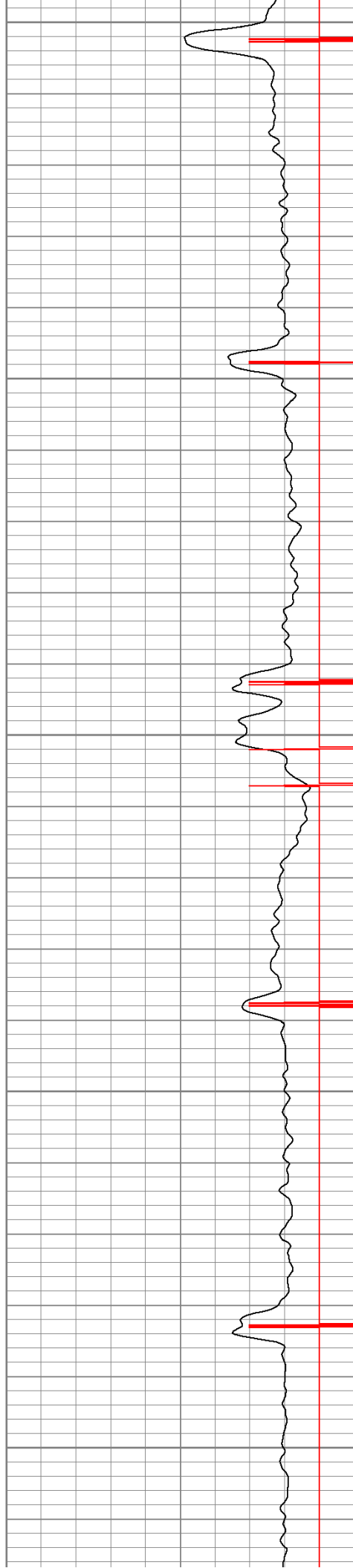
400

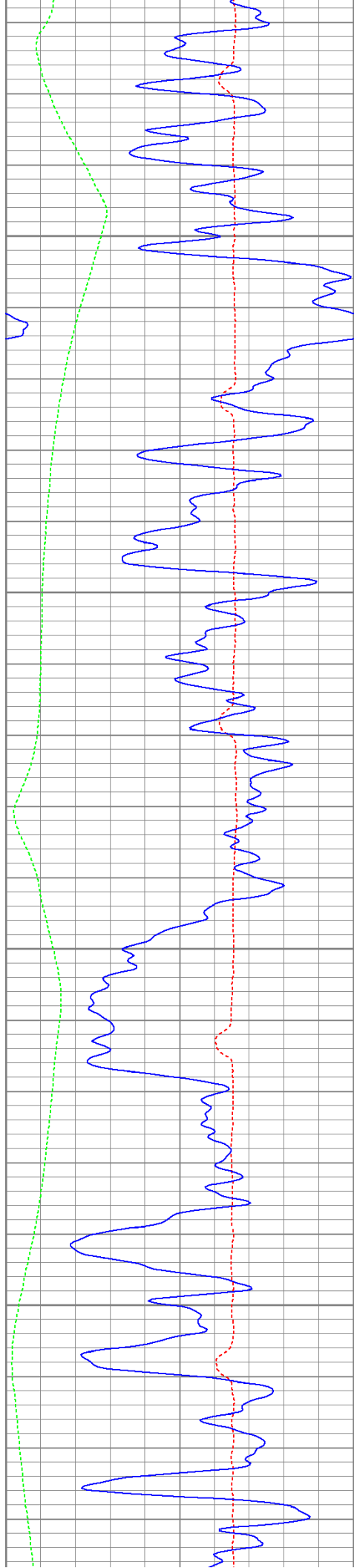
450

500

550

600



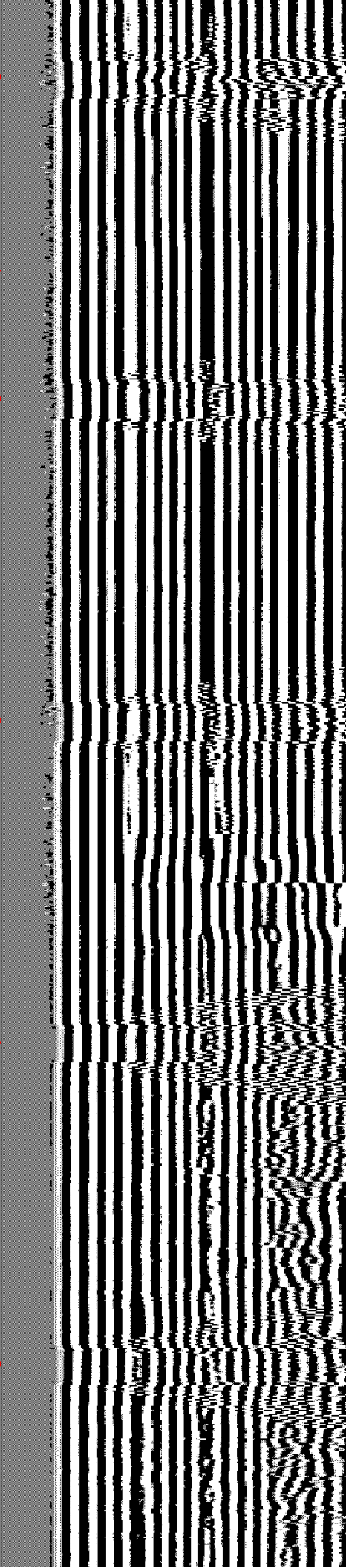
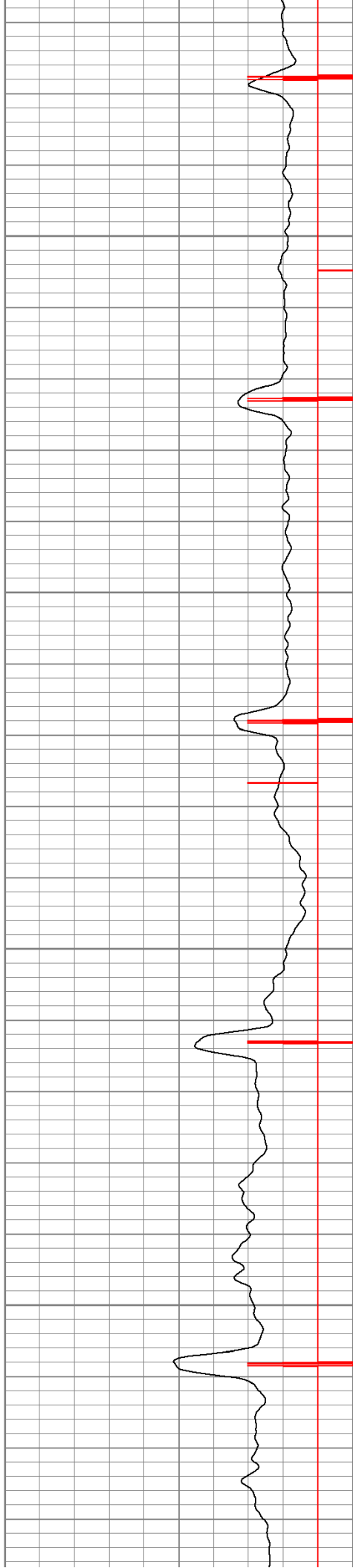


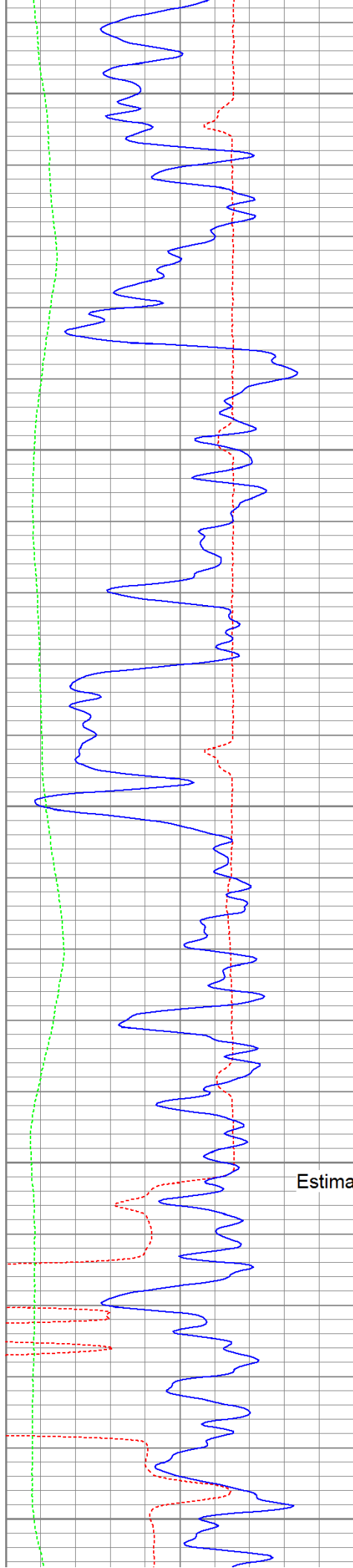
650

700

750

800





850

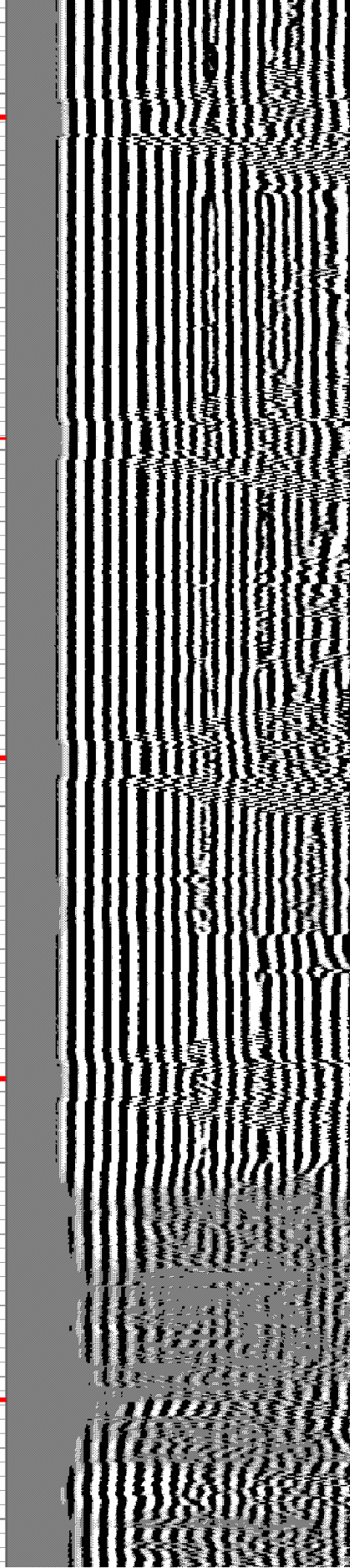
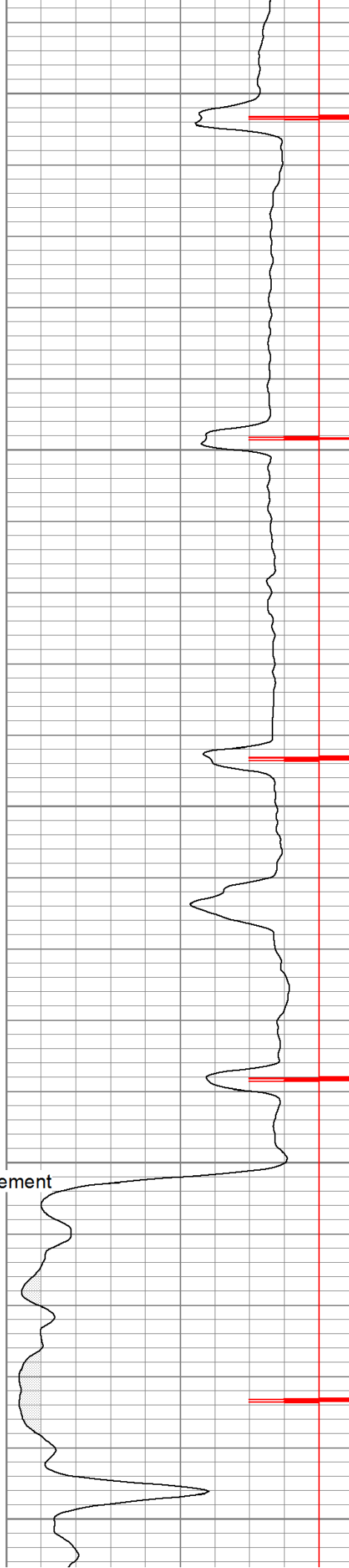
900

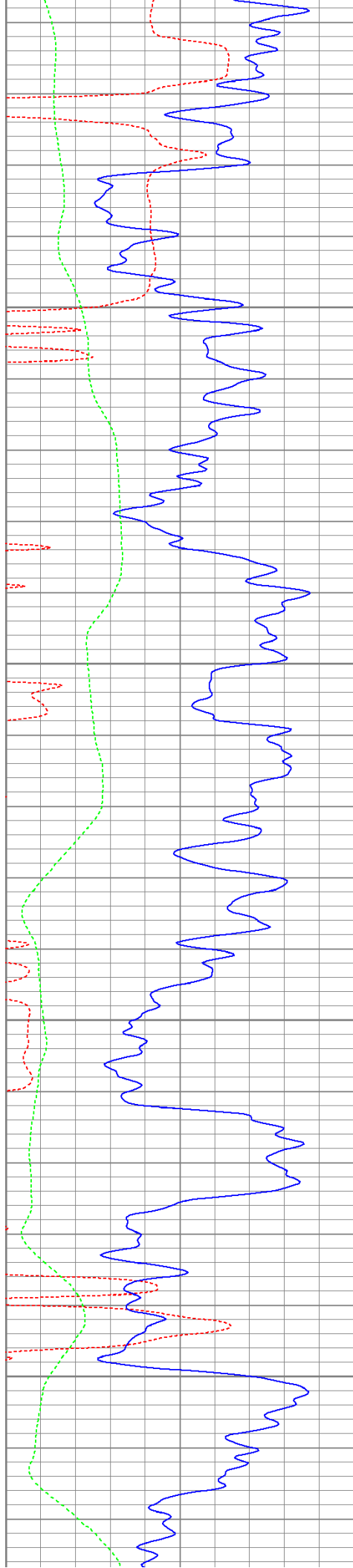
950

1000

Estimated Top of Cement

1050



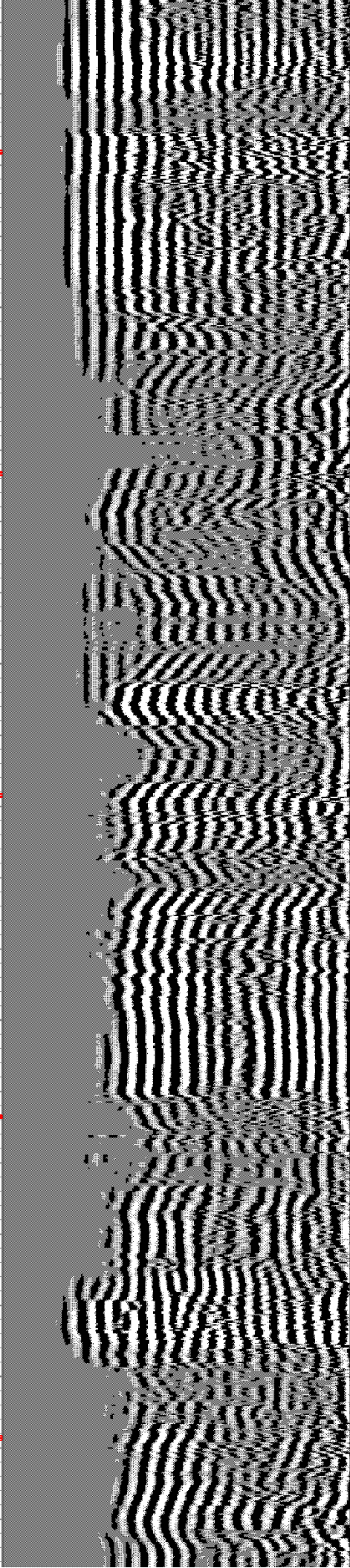
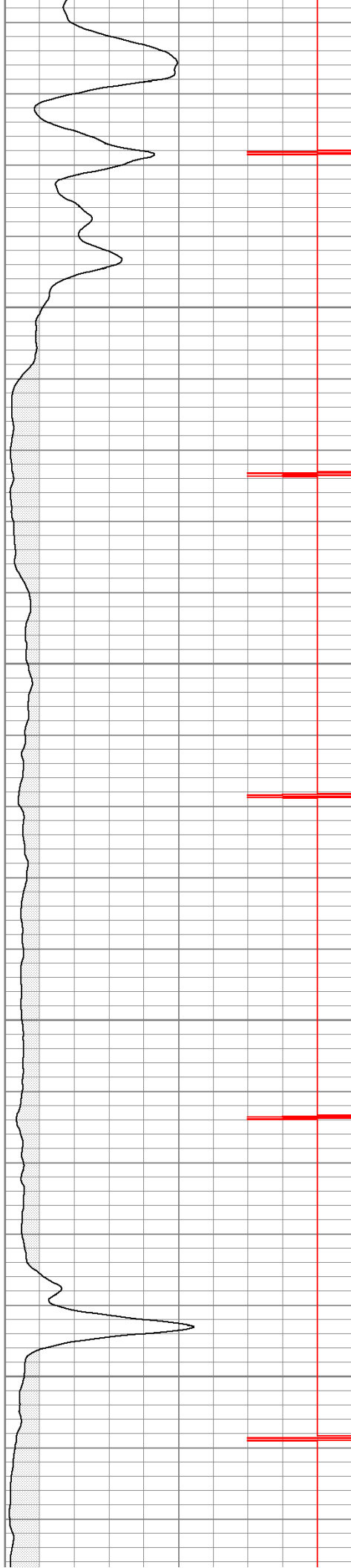


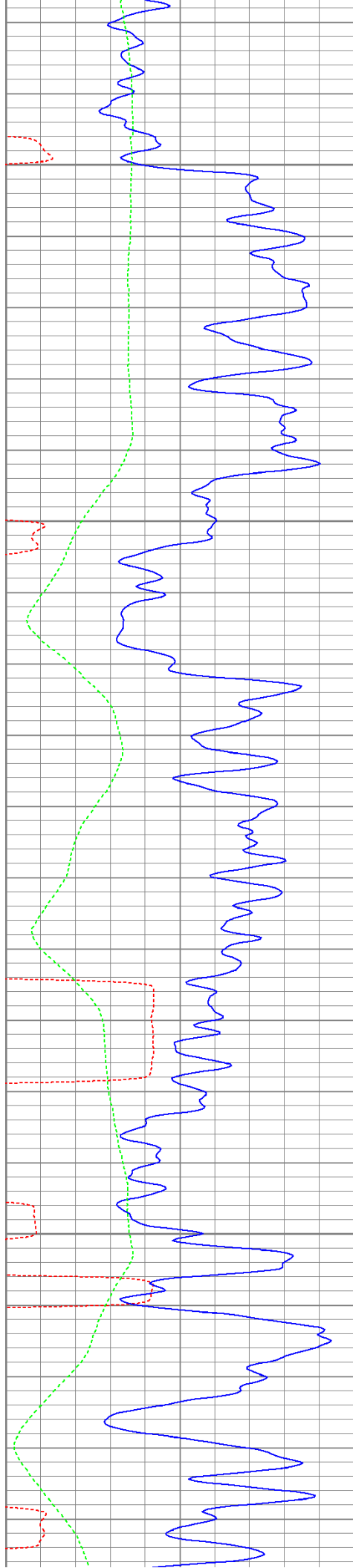
1100

1150

1200

1250



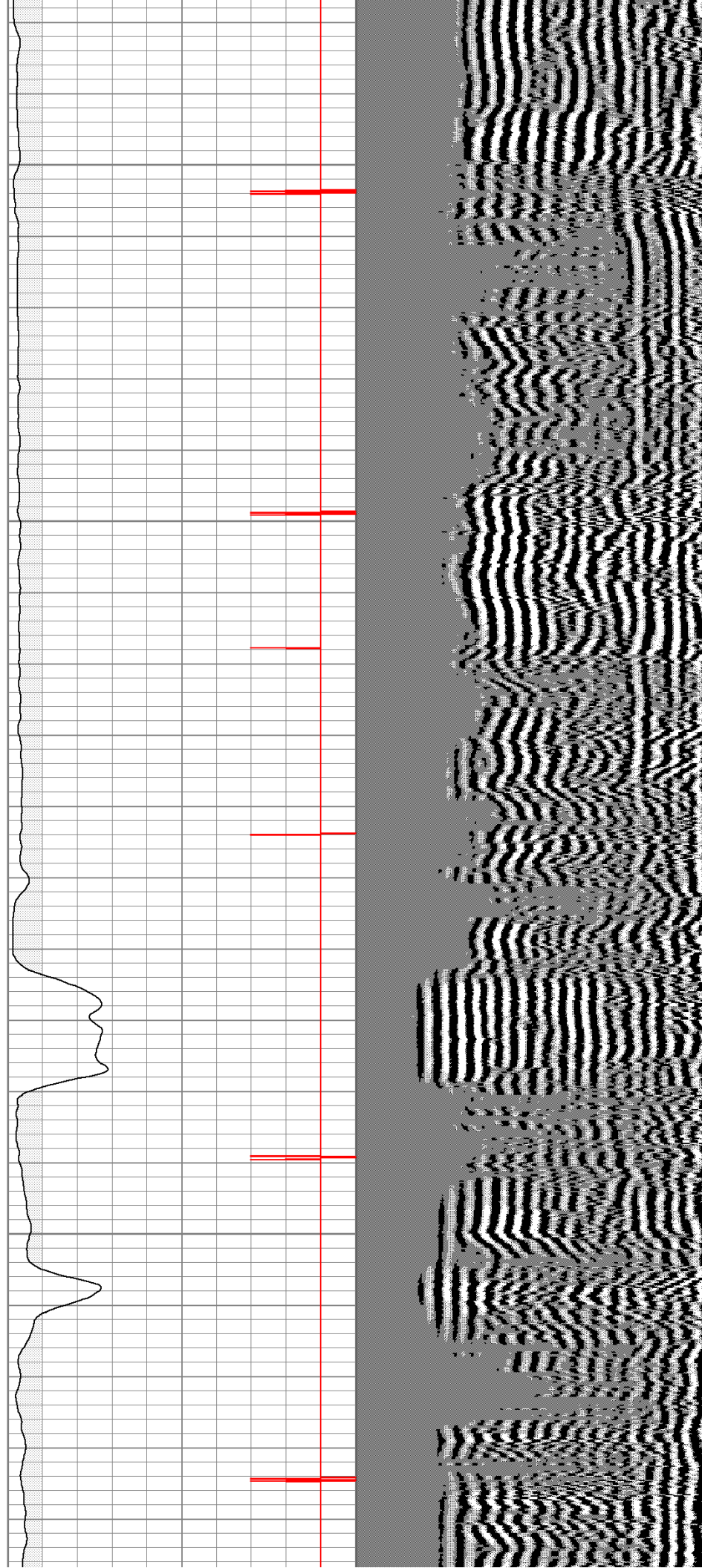


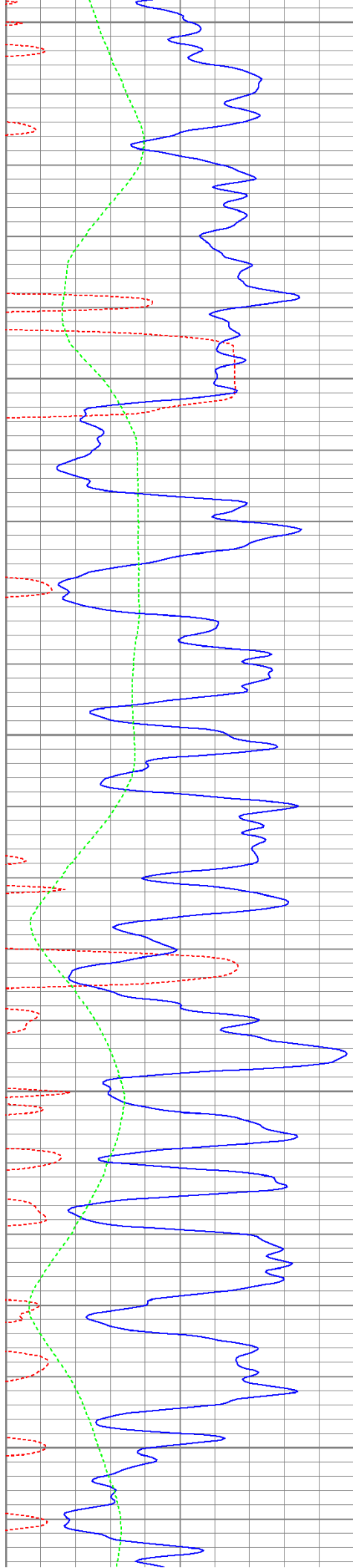
1300

1350

1400

1450





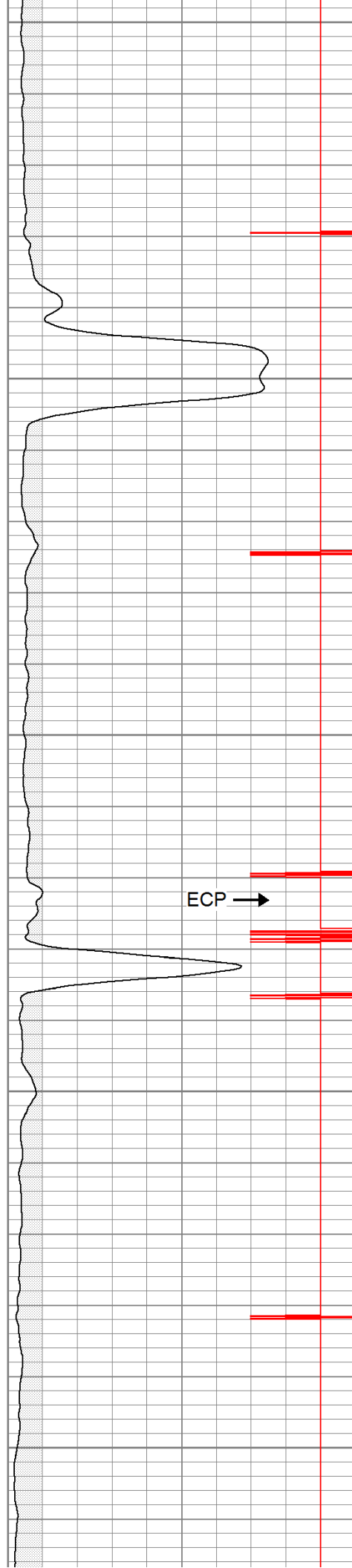
1500

1550

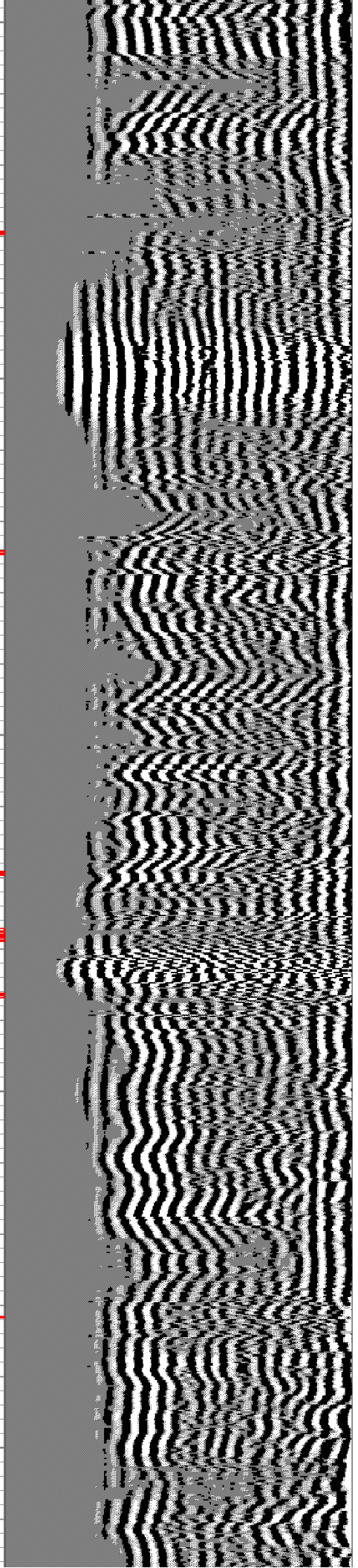
1600

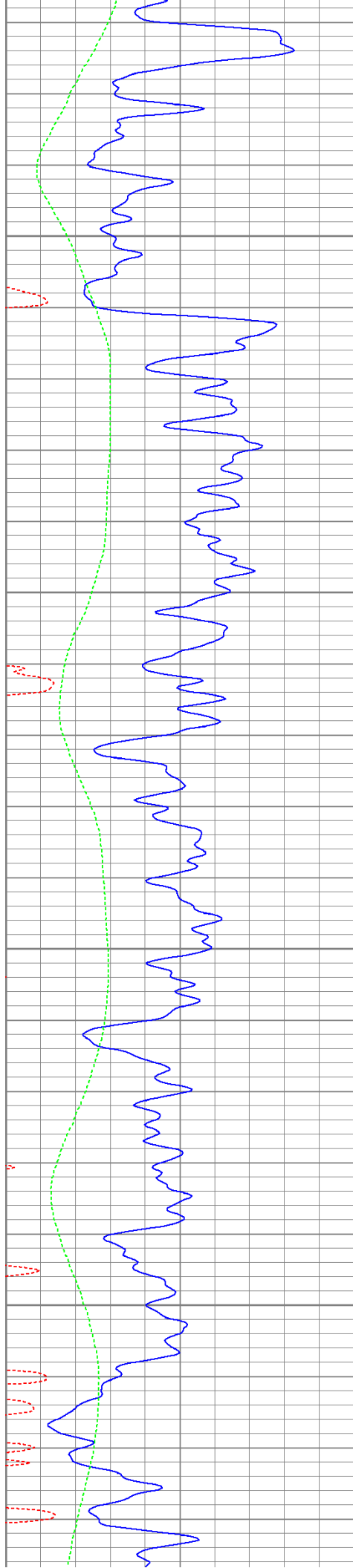
1650

1700



ECP →



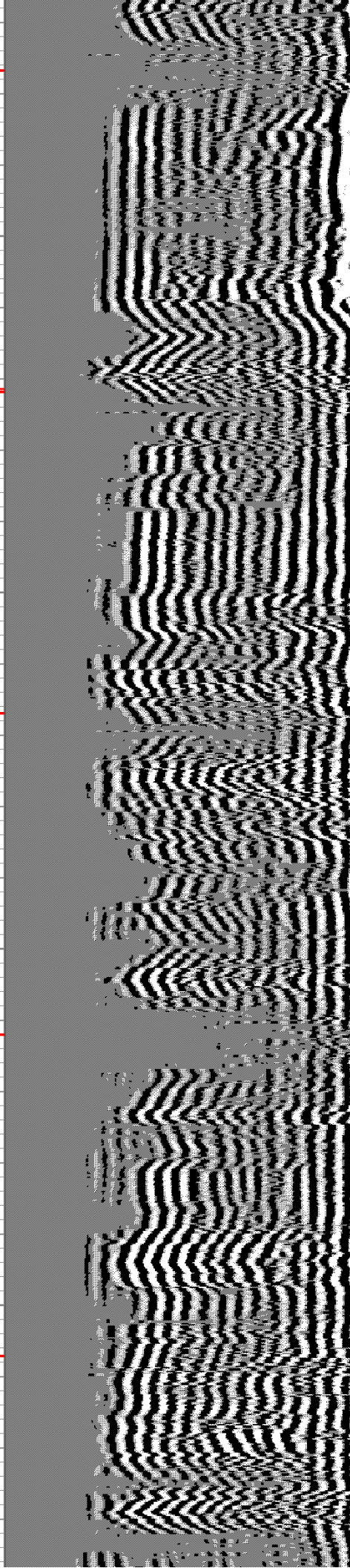
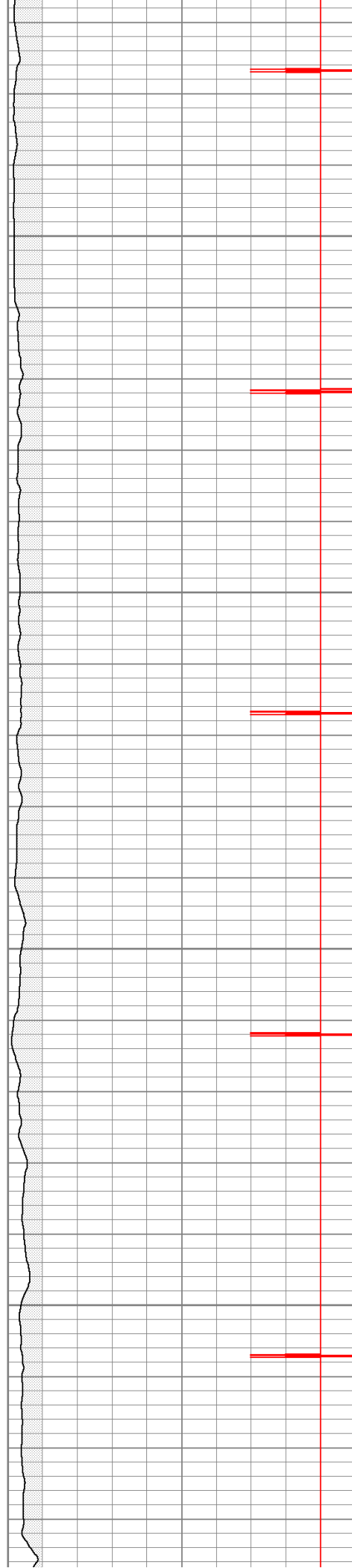


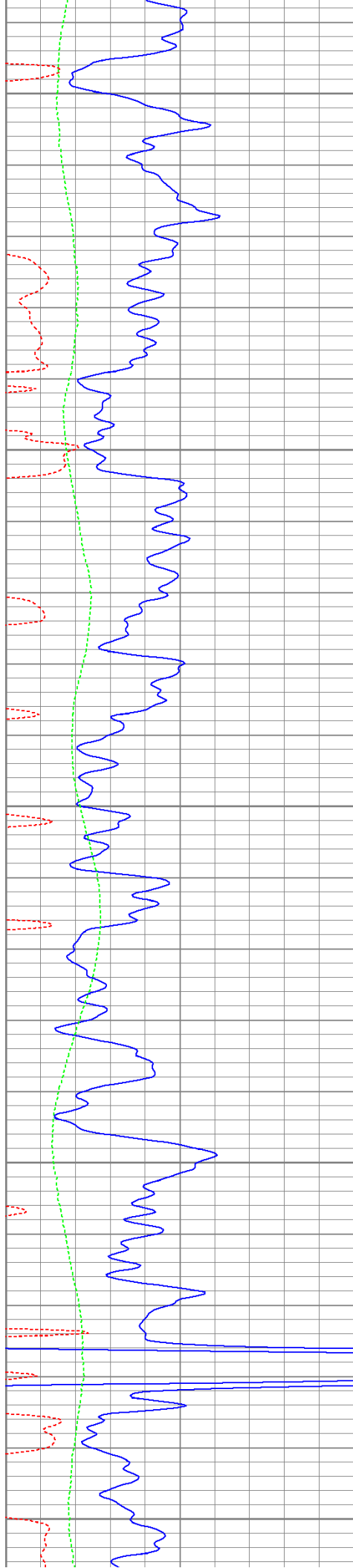
1750

1800

1850

1900





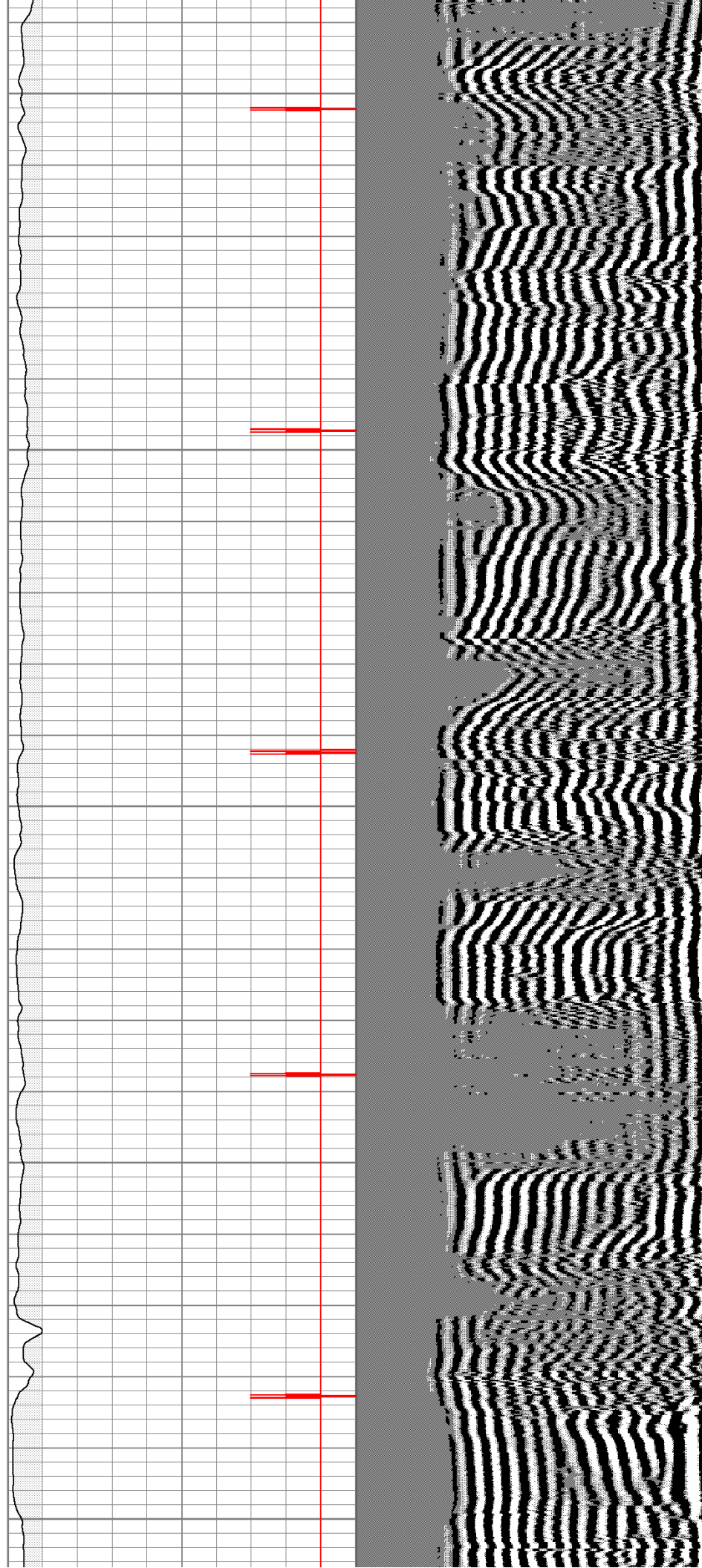
1950

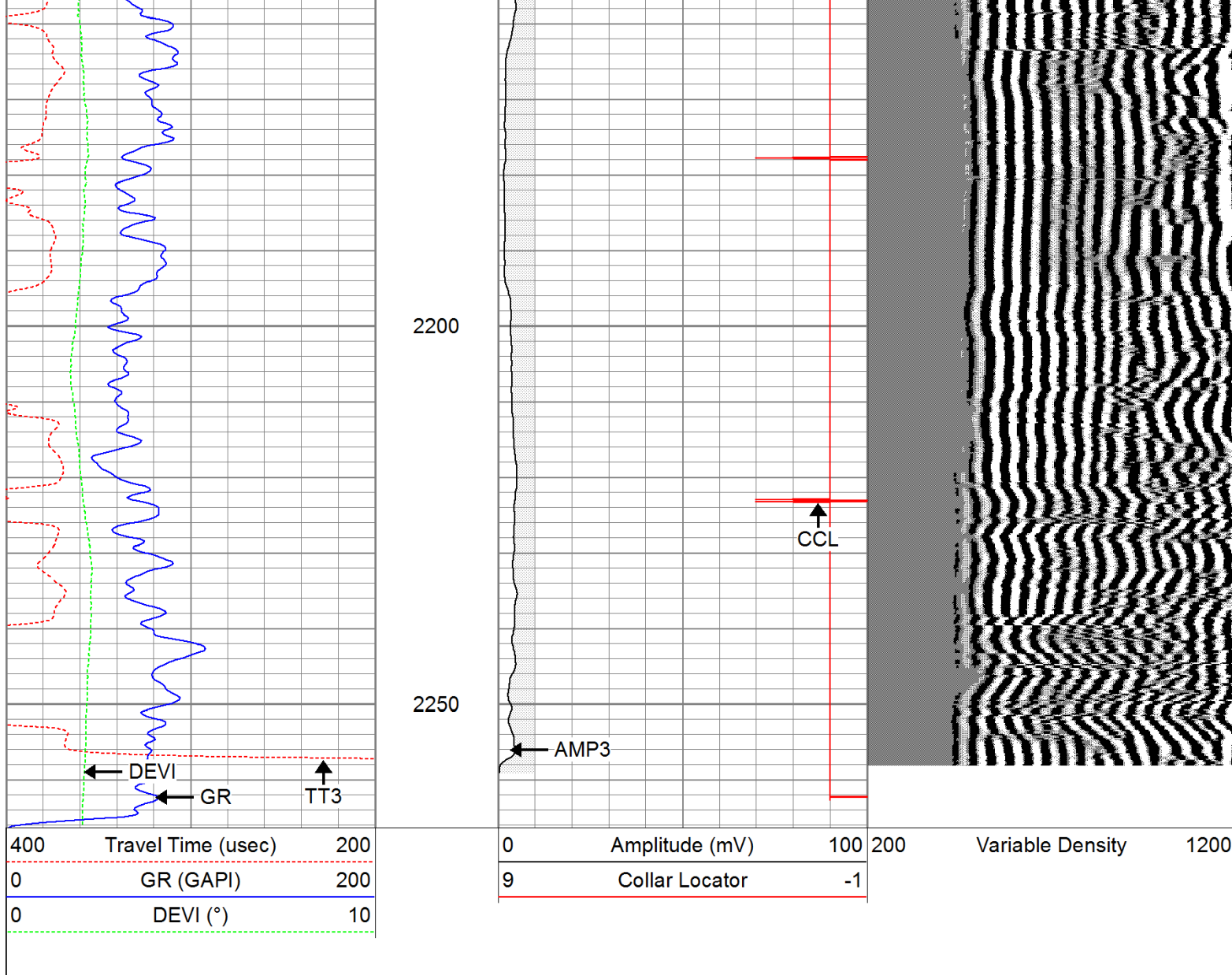
2000

2050

2100

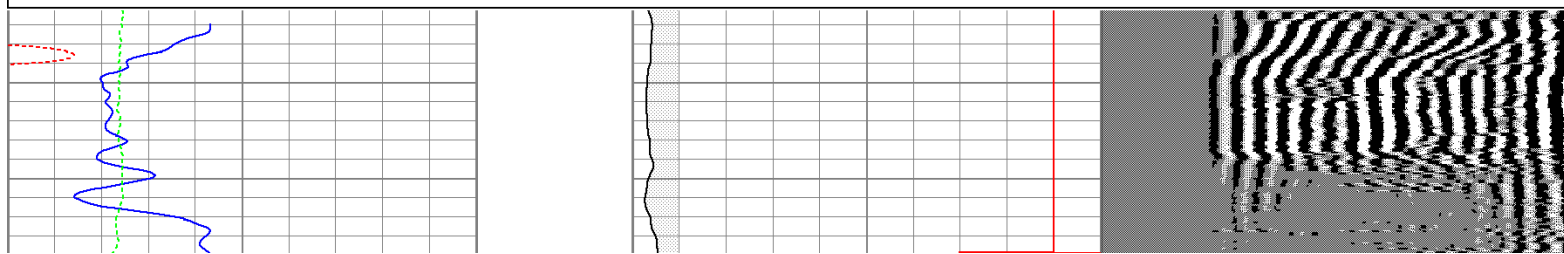
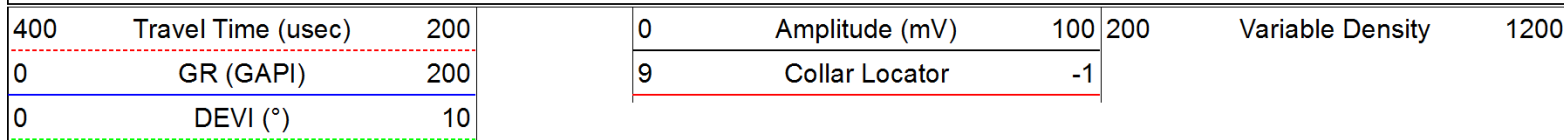
2150

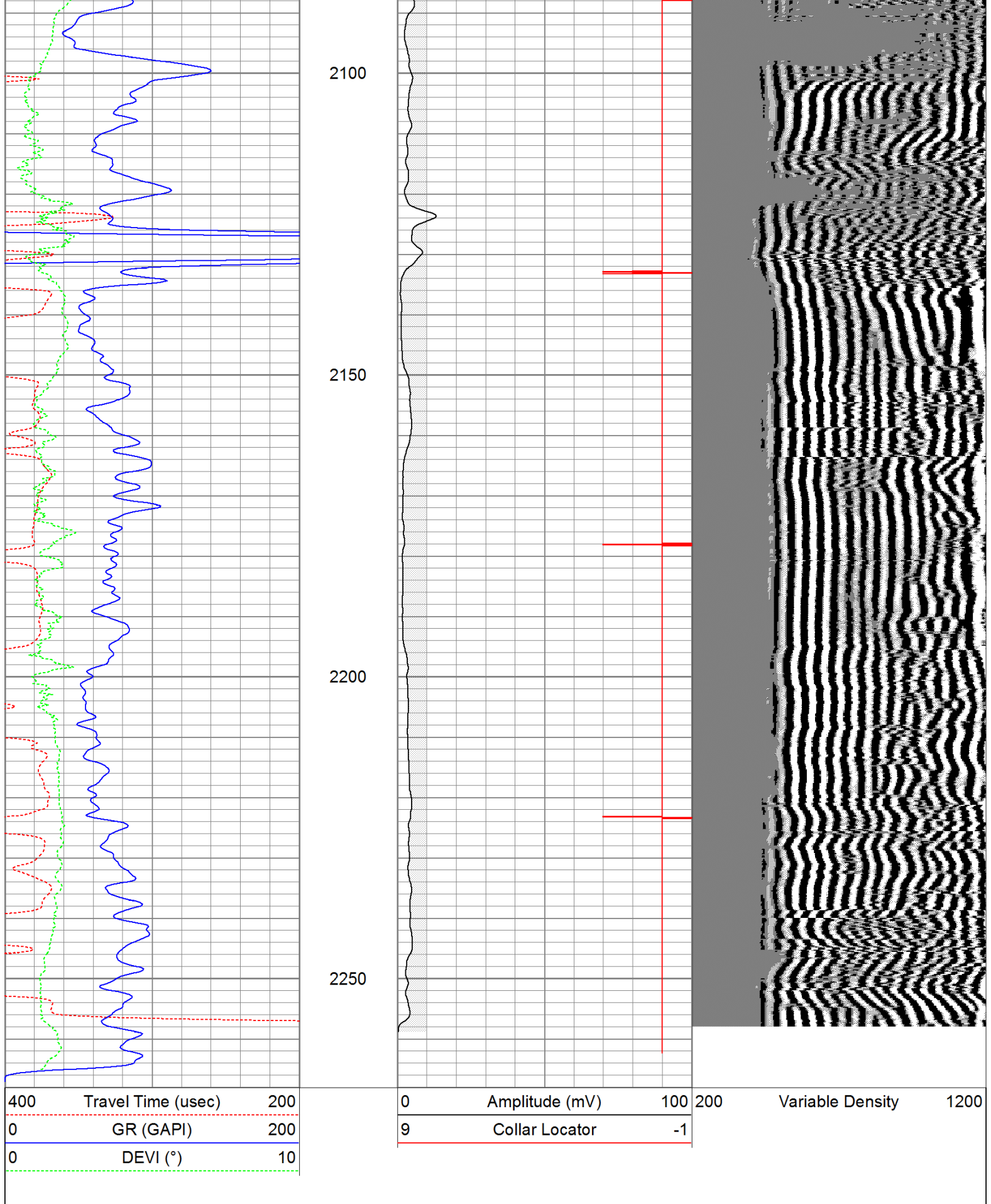




Repeat Pass

Database File: ac08-0671911b.db
 Dataset Pathname: pass2
 Presentation Format: cbldig
 Dataset Creation: Tue Jul 19 09:42:30 2011 by Log Open-Cased 110302
 Charted by: Depth in Feet scaled 1:240

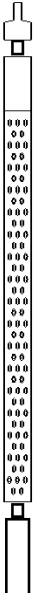
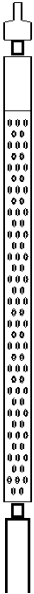


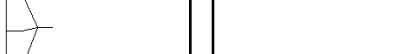


Calibration Report

Database File: ac08-0671911b.db
Dataset Pathname: pass3
Dataset Creation: Tue Jul 19 10:05:43 2011 by Log Open-Cased 110302

Gamma Ray Calibration Report					
Serial Number:	080616				
Tool Model:	275D_INC				
Performed:	Wed May 04 17:31:09 2011				
Calibrator Value:	200.0	GAPI			
Background Reading:	50.0	cps			
Calibrator Reading:	250.0	cps			
Sensitivity:	1.0000	GAPI/cps			
Inclinometer Calibration Report					
Performed:	Wed May 04 17:39:54 2011				
	Low Read.	High Read.	Low Ref.	High Ref.	
X Accelerometer	-3585.20	3595.40	-1.00	1.00	gee
Y Accelerometer	-3619.40	3520.00	-1.00	1.00	gee
Z Accelerometer					
Cement Bond Log Calibration Report					
Serial Number:	081024				
Tool Model:	PROBEDIGITALCBL				
Performed:	Tue Jul 19 09:25:23 2011				
Depth:	93.4615	ft			
Casing Diameter:	5.5	in			
	3' Spacing	5' Spacing			
Signal Zero:	0	0		mV	
Calibrated Amplitude:	85	85		mV	
Reading at Signal Zero:	-0.00874023	-0.0092041		V	
Reading in Free Pipe:	1.72476	1.66304		V	
Gain:	49.0339	50.83			
Offset:	0.428567	0.467844			

Sensor	Offset (ft)	Schematic	Description	Len (ft)	OD (in)	Wt (lb)
WVF3	9.04		None	0.75	1.50	5.00
			Star	0.29	1.50	0.50
			CBL-PROBEDIGITALCBL (081024) PROBE DIGITAL CBL	8.75	2.75	106.50
WVF5	8.04					
CCL	3.50		Star	0.29	1.50	0.50

ACCX	1.83		GR-275D_INC (080616)	4.50	2.75	50.00
ACCY	1.83		2-3/4" GR-CCL with Inclination			
ACCZ	1.83					
GR	0.83					

Dataset: ac08-0671911b.db: field/well/run1/pass1

Total Length: 14.58 ft

Total Weight: 162.50 lb

O.D. 2.75 in