

HALLIBURTON

OXY GRAND JUNCTION EBUSINESS

**CC 697-05-80B
GRAND VALLEY
Garfield County , Colorado**

**Cement Surface Casing
15-May-2011**

Post Job Report

The Road to Excellence Starts with Safety

Sold To #: 344034		Ship To #: 2853971		Quote #:		Sales Order #: 8169048	
Customer: OXY GRAND JUNCTION EBUSINESS				Customer Rep: Vallegas, Alex			
Well Name: CC			Well #: 697-05-80B		API/UWI #: 05-045-18733		
Field: GRAND VALLEY		City (SAP): PARACHUTE		County/Parish: Garfield		State: Colorado	
Lat: N 39.542 deg. OR N 39 deg. 32 min. 31.549 secs.				Long: W 108.238 deg. OR W -109 deg. 45 min. 43.099 secs.			
Contractor: H&P 353			Rig/Platform Name/Num: H&P 353				
Job Purpose: Cement Surface Casing							
Well Type: Development Well			Job Type: Cement Surface Casing				
Sales Person: DUNNING, DUSTIN			Srvc Supervisor: KUKUS, CRAIG			MBU ID Emp #: 369124	

Job Personnel

HES Emp Name	Exp Hrs	Emp #	HES Emp Name	Exp Hrs	Emp #	HES Emp Name	Exp Hrs	Emp #
KUKUS, CHRISTOPHER A	12	413952	KUKUS, CRAIG A	12	369124	RAMSEY, DANIEL Thomas	12	488923
WINKER, STEVEN	12	478776						

Equipment

HES Unit #	Distance-1 way	HES Unit #	Distance-1 way	HES Unit #	Distance-1 way	HES Unit #	Distance-1 way
10053558	240 mile	10784064	240 mile	10829469	240 mile	10871245	240 mile
11006314	240 mile	11360881	240 mile				

Job Hours

Date	On Location Hours	Operating Hours	Date	On Location Hours	Operating Hours	Date	On Location Hours	Operating Hours
5/15/11	12	8						

TOTAL Total is the sum of each column separately

Job

Formation Name							Date	Time	Time Zone
Formation Depth (MD)	Top			Bottom		Called Out	14 - May - 2011	11:00	MST
Form Type				BHST		On Location	15 - May - 2011	04:00	MST
Job depth MD	2720. ft		Job Depth TVD		2695. ft	Job Started	15 - May - 2011	08:49	MST
Water Depth				Wk Ht Above Floor	4. ft	Job Completed	15 - May - 2011	00:00	MST
Perforation Depth (MD)	From			To		Departed Loc	15 - May - 2011	00:00	MST

Well Data

Description	New / Used	Max pressure psig	Size in	ID in	Weight lbm/ft	Thread	Grade	Top MD ft	Bottom MD ft	Top TVD ft	Bottom TVD ft
-------------	------------	-------------------	---------	-------	---------------	--------	-------	-----------	--------------	------------	---------------

Sales/Rental/3rd Party (HES)

Description	Qty	Qty uom	Depth	Supplier
PLUG,CMTG,TOP,9 5/8,HWE,8.16 MIN/9.06 MA	1	EA		

Tools and Accessories

Type	Size	Qty	Make	Depth	Type	Size	Qty	Make	Depth	Type	Size	Qty	Make
Guide Shoe					Packer					Top Plug	9 5/8	1	HES
Float Shoe					Bridge Plug					Bottom Plug			
Float Collar					Retainer					SSR plug set			
Insert Float										Plug Container	9 5/8	1	HES
Stage Tool										Centralizers			

Miscellaneous Materials

Gelling Agt	Conc	Surfactant	Conc	Acid Type	Qty	Conc	%
Treatment Fld	Conc	Inhibitor	Conc	Sand Type	Size	Qty	

Fluid Data

Stage/Plug #: 1									
Fluid #	Stage Type	Fluid Name	Qty	Qty uom	Mixing Density lbm/gal	Yield ft3/sk	Mix Fluid Gal/sk	Rate bbl/min	Total Mix Fluid Gal/sk

Stage/Plug #: 1									
Fluid #	Stage Type	Fluid Name	Qty	Qty uom	Mixing Density lbm/gal	Yield ft ³ /sk	Mix Fluid Gal/sk	Rate bbl/min	Total Mix Fluid Gal/sk
1	Water Spacer		20.00	bbl	8.33	.0	.0	6	
2	Gel Spacer		20.00	bbl	.	.0	.0	6	
3	Water Spacer		20.00	bbl	.	.0	.0	6	
4	Lead Cement	VERSACEM (TM) SYSTEM (452010)	1050.0	sacks	12.3	2.33	12.62	7	12.62
		12.62 Gal	FRESH WATER						
5	Tail Cement	VERSACEM (TM) SYSTEM (452010)	170.0	sacks	12.8	2.07	10.67	7	10.67
		10.67 Gal	FRESH WATER						
6	Displacement		205.00	bbl	.	.0	.0	7	
7	Topout Cement	HALCEM (TM) SYSTEM (452986)	114.5	sacks	12.5	1.97	10.96	2	10.96
		10.96 Gal	FRESH WATER						
Calculated Values		Pressures		Volumes					
Displacement	204	Shut In: Instant		Lost Returns	0	Cement Slurry	539	Pad	
Top Of Cement	SURFACE	5 Min		Cement Returns	7	Actual Displacement	205	Treatment	
Frac Gradient		15 Min		Spacers	60	Load and Breakdown		Total Job	803
Rates									
Circulating	RIG	Mixing	7	Displacement	7	Avg. Job	7		
Cement Left In Pipe	Amount	47.93 ft	Reason	Shoe Joint					
Frac Ring # 1 @	ID	Frac ring # 2 @	ID	Frac Ring # 3 @	ID	Frac Ring # 4 @	ID		
The Information Stated Herein Is Correct				Customer Representative Signature					

The Road to Excellence Starts with Safety

Sold To #: 344034		Ship To #: 2853971		Quote #:		Sales Order #: 8169048	
Customer: OXY GRAND JUNCTION EBUSINESS				Customer Rep: Vallegas, Alex			
Well Name: CC			Well #: 697-05-80B			API/UWI #: 05-045-18733	
Field: GRAND VALLEY		City (SAP): PARACHUTE		County/Parish: Garfield		State: Colorado	
Legal Description:							
Lat: N 39.542 deg. OR N 39 deg. 32 min. 31.549 secs.				Long: W 108.238 deg. OR W -109 deg. 45 min. 43.099 secs.			
Contractor: H&P 353			Rig/Platform Name/Num: H&P 353				
Job Purpose: Cement Surface Casing						Ticket Amount:	
Well Type: Development Well			Job Type: Cement Surface Casing				
Sales Person: DUNNING, DUSTIN			Srvc Supervisor: KUKUS, CRAIG			MBU ID Emp #: 369124	

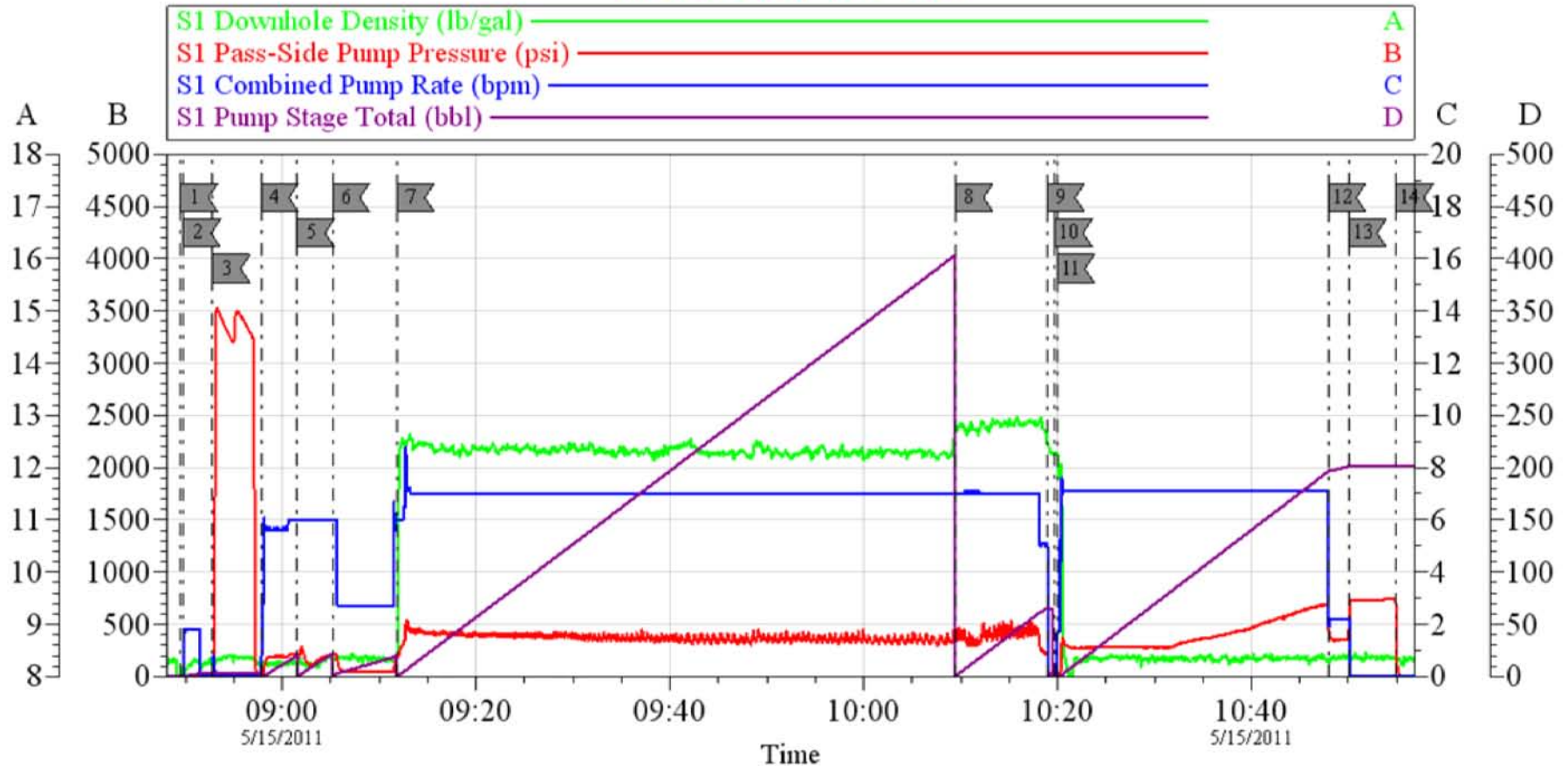
Activity Description	Date/Time	Cht #	Rate bbl/min	Volume bbl		Pressure psig		Comments
				Stage	Total	Tubing	Casing	
Call Out	05/14/2011 23:00							
Depart Yard Safety Meeting	05/15/2011 01:00							SAFETY MEETING INVOLVING THE ENTIRE CMT CREW
Arrive At Loc	05/15/2011 04:00							RIG RUNNING CSG
Assessment Of Location Safety Meeting	05/15/2011 04:30							ASSESSMENT OF LOCATION INVOLVING THE ENTIRE CMT CREW
Pre-Rig Up Safety Meeting	05/15/2011 06:15							SAFETY MEETING INVOLVING THE ENTIRE CMT CREW
Rig-Up Equipment	05/15/2011 06:30							
Circulate Well	05/15/2011 07:00							RIG CIRCULATE WELL HAD RETURNS AIR WAS ON
Pre-Job Safety Meeting	05/15/2011 08:30							SAFETY MEETING INVOLVING EVERYONE ON LOCATION
Start Job	05/15/2011 08:49							TD 2720 FT TP 2695 FT SJ 47.93 FT MUD WT 8.7 # PIPE 9 5/8 IN OH 14 3/4 IN
Other	05/15/2011 08:49		2	3			47.0	FILL LINES
Pressure Test	05/15/2011 08:52		0.5			3500.0		PRESSURE TEST GOOD
Pump Spacer 1	05/15/2011 08:57		6	20			220.0	FRESH WATER SPACER
Pump Spacer 1	05/15/2011 09:01		6	20			250.0	PUMP LGC SPACER

Activity Description	Date/Time	Cht #	Rate bbl/min	Volume bbl		Pressure psig		Comments
				Stage	Total	Tubing	Casing	
Pump Spacer 1	05/15/2011 09:05		6	20			210.0	PUMP FRESH WATER SPACER
Pump Lead Cement	05/15/2011 09:11		7	435			415.0	PUMP 1050 SKS LEAD CEMENT AT 12.3 PPG 2.33 Y 12.62 GAL /SK
Pump Tail Cement	05/15/2011 10:09		7	62.7			470.0	PUMP 170 SKS TAIL CEMENT AT 12.8 PPG 2.07 Y 10.67 GAL/SK
Shutdown	05/15/2011 10:18							
Drop Top Plug	05/15/2011 10:19							PLUG LEFT THE PLUG CONTAINER
Pump Displacement	05/15/2011 10:19		7	204			690.0	PUMP FRESH WATER DISPLACEMENT
Slow Rate	05/15/2011 10:47		2	196			420.0	SLOW RATE TO 2 BBL MIN LAST 10 BBLS
Bump Plug	05/15/2011 10:50		2	204			789.0	PLUG LANDED AT 430 PSI NO CEMENT TO SURFACE
Check Floats	05/15/2011 10:54							FLOATS HELD GOT 3/4 BBL BACK TO TANKS
Pressure Up Tubing	05/15/2011 10:59		1					PRESSURE UP CSG AND HOLD FOR 30 MINS
Check Floats	05/15/2011 11:31							GOT 3/4 BBL BACK TO TANKS
Pump Water - End	05/15/2011 12:17		2	10			675.0	PUMP SUGAR WATER THRU PARASITE LINE
Shutdown	05/15/2011 12:23							SHUT DOWN WASH UP PUMP READY FOR TOP OUT
End Job	05/15/2011 12:24							GOT RETURNS AT 150 BBLS GONE ON DISPLACEMENT/LOST RETURNS AT 180 BBLS GONE NOT VERY STRONG RETURNS
Start Job	05/15/2011 14:20							START TOP OUT NUMBER ONE
Pump Water - End	05/15/2011 14:20		2	0.5			3.0	PUMP WATER AHEAD
Pump Cement	05/15/2011 14:22		2	27			60.0	PUMP TOP OUT CEMENT AT 12.5 PPG 1.95 Y 10.96 GAL/SK TOTAL 77 SKS / HESITATED THRU OUT

Cementing Job Log

Activity Description	Date/Time	Cht #	Rate bbl/min	Volume bbl		Pressure psig		Comments
				Stage	Total	Tubing	Casing	
Shutdown	05/15/2011 14:51							SHUT DOWN AND WASH LINES AND PUMPS
Start Job	05/15/2011 16:12							START TOP OUT NUMBER 2
Pump Water - End	05/15/2011 16:12		2	0.5			3.0	PUMP WATER AHEAD
Pump Cement	05/15/2011 16:12		2	13			60.0	PUMP 37.5 SKS CEMENT AT 12.5 PPG 1.95 Y 10.96 GAL/SK / HESITATED THRU OUT CEMENT
Shutdown	05/15/2011 16:33							SHUT DOWN / CEMENT TO SURFACE/WASH PUMPS AND LINES
End Job	05/15/2011 16:33							TOTAL TOP OUT USED 114.5 SKS
Pre-Rig Down Safety Meeting	05/15/2011 16:35							SAFETY MEETING INVOLVING THE ENTIRE CMT CREW
Rig-Down Equipment	05/15/2011 16:50							
Safety Meeting - Departing Location	05/15/2011 17:45							SAFETY MEETING INVOLVING THE ENTIRE CMT CREW
Comment	05/15/2011 17:50							THANK YOU FOR USING HALLIBURTON, CRAIG KUKUS AND CREW

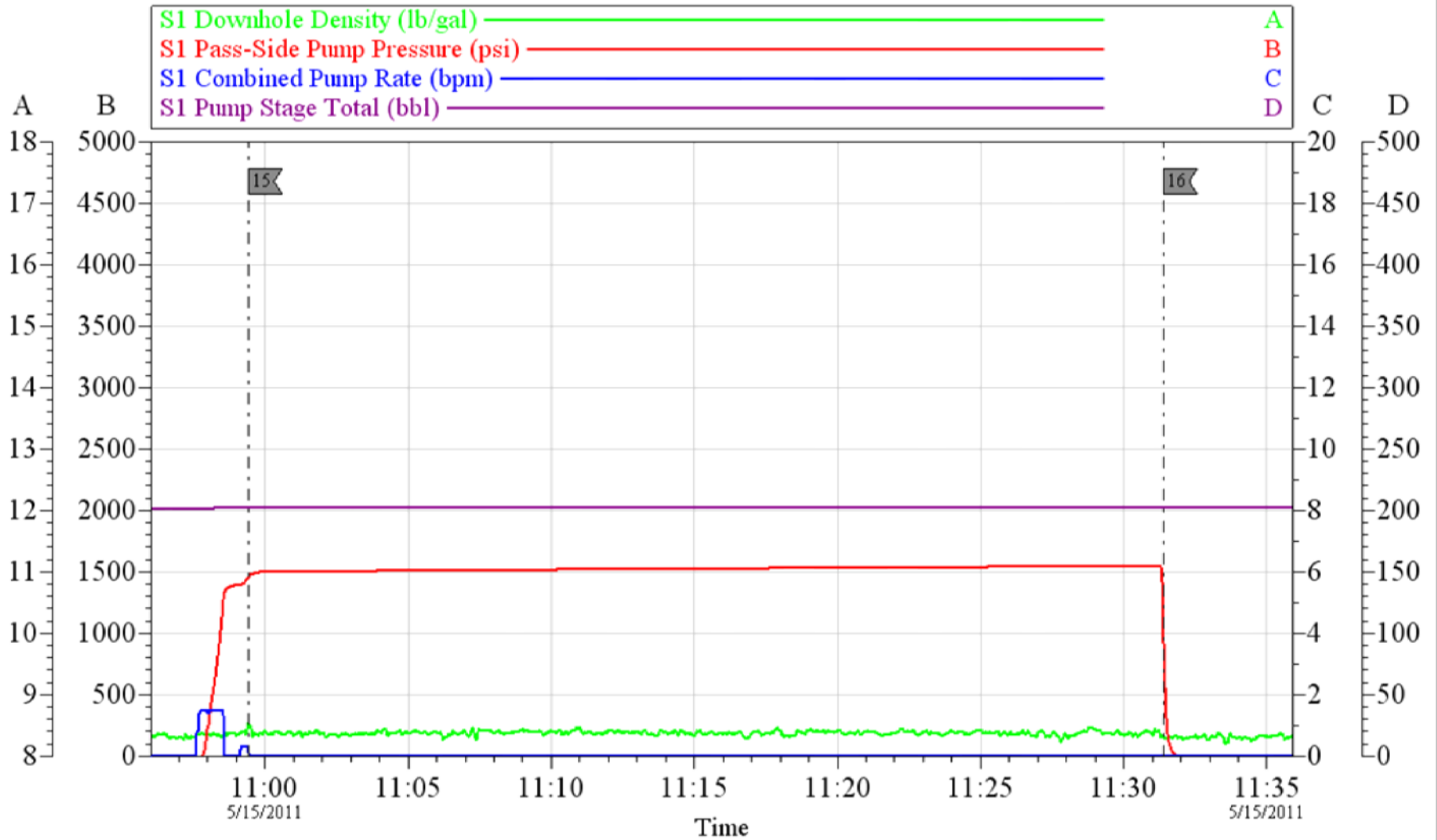
OXY SURFACE HP 353



Local Event Log								
1	START JOB	08:49:31	2	PRIMELINES	08:49:48	3	PRESSURE TEST	08:52:50
4	PUMP H2O SPACER	08:57:48	5	PUMP GEL SPACER	09:01:33	6	PUMP H2O SPACER	09:05:10
7	PUMP LEAD CEMENT	09:11:50	8	PUMP TAIL CEMENT	10:09:30	9	SHUT DOWN	10:18:56
10	DROP PLUG	10:19:45	11	PUMP H2O DISPLACEMENT	10:19:58	12	SLOW RATE	10:47:57
13	BUMP PLUG	10:50:07	14	CHECK FLOATS	10:54:57			

Customer: OXY	Job Date: 15-May-2011	Sales Order #: 8169048	OptiCem v6.4.8 15-May-11 11:27
Well Description: CC 697-05-80B	Job Type: SURFACE	ADC Used: YES	
Company Rep: ALEX VALLEGAS	Cement Supervisor: CRAIK KUKUS	Elite #/Operator: ELITE 8 CHRIS KUKUS	

OXY SURFACE HP 353

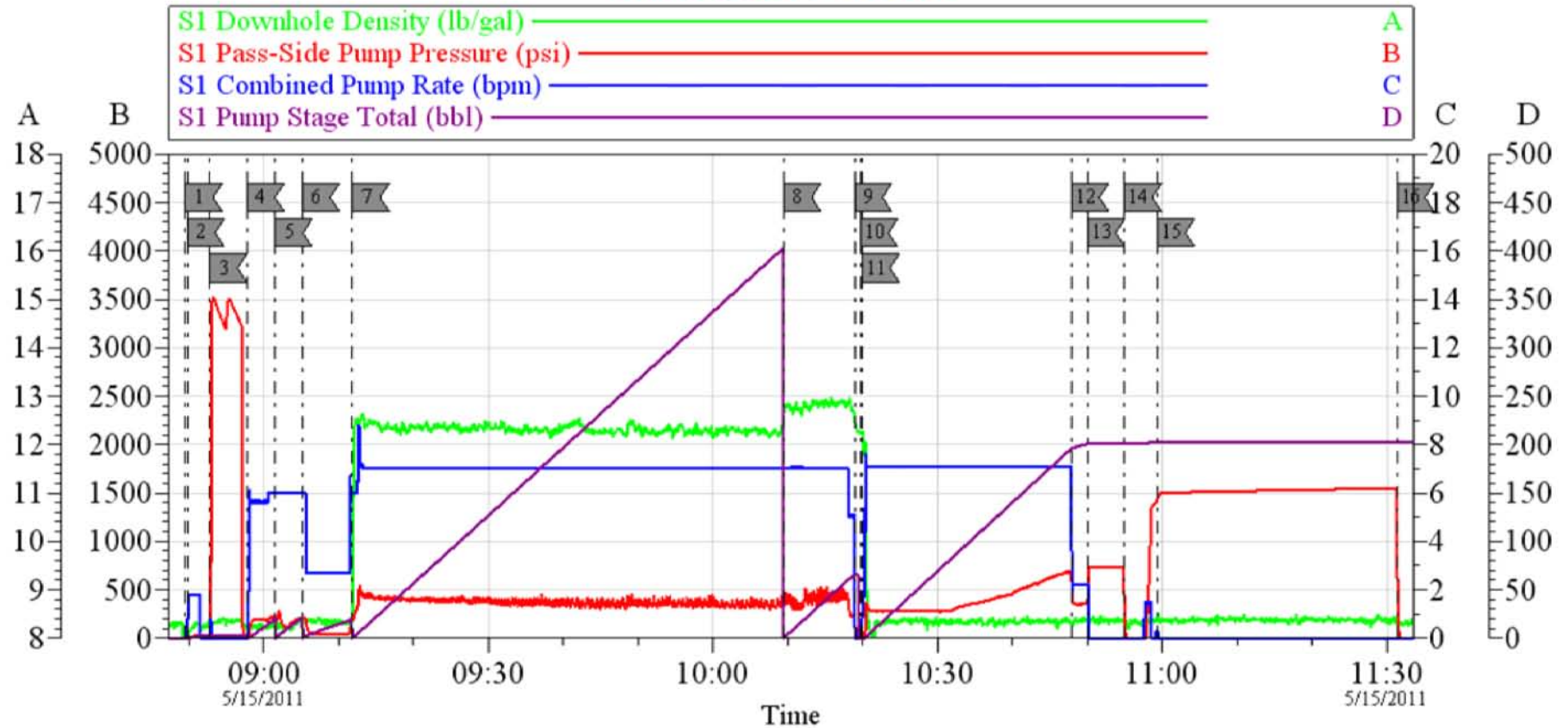


Local Event Log			
15	PRESSURE TEST CSG	10:59:26	16 CHECK FLOATS 11:31:24

Customer: OXY	Job Date: 15-May-2011	Sales Order #: 8169048
Well Description: CC 697-05-80B	Job Type: SURFACE	ADC Used: YES
Company Rep: ALEX VALLEGAS	Cement Supervisor: CRAIK KUKUS	Elite #/Operator: ELITE 8 CHRIS KUKUS

OptiCem v6.4.8
15-May-11 12:01

OXY SURFACE HP 353



Local Event Log								
1	START JOB	08:49:31	2	PRIMELINES	08:49:48	3	PRESSURE TEST	08:52:50
4	PUMP H2O SPACER	08:57:48	5	PUMP GEL SPACER	09:01:33	6	PUMP H2O SPACER	09:05:10
7	PUMP LEAD CEMENT	09:11:50	8	PUMP TAIL CEMENT	10:09:30	9	SHUT DOWN	10:18:56
10	DROP PLUG	10:19:45	11	PUMP H2O DISPLACEMENT	10:19:58	12	SLOW RATE	10:47:57
13	BUMP PLUG	10:50:07	14	CHECK FLOATS	10:54:57	15	PRESSURE TEST CSG	10:59:26
16	CHECK FLOATS	11:31:24						

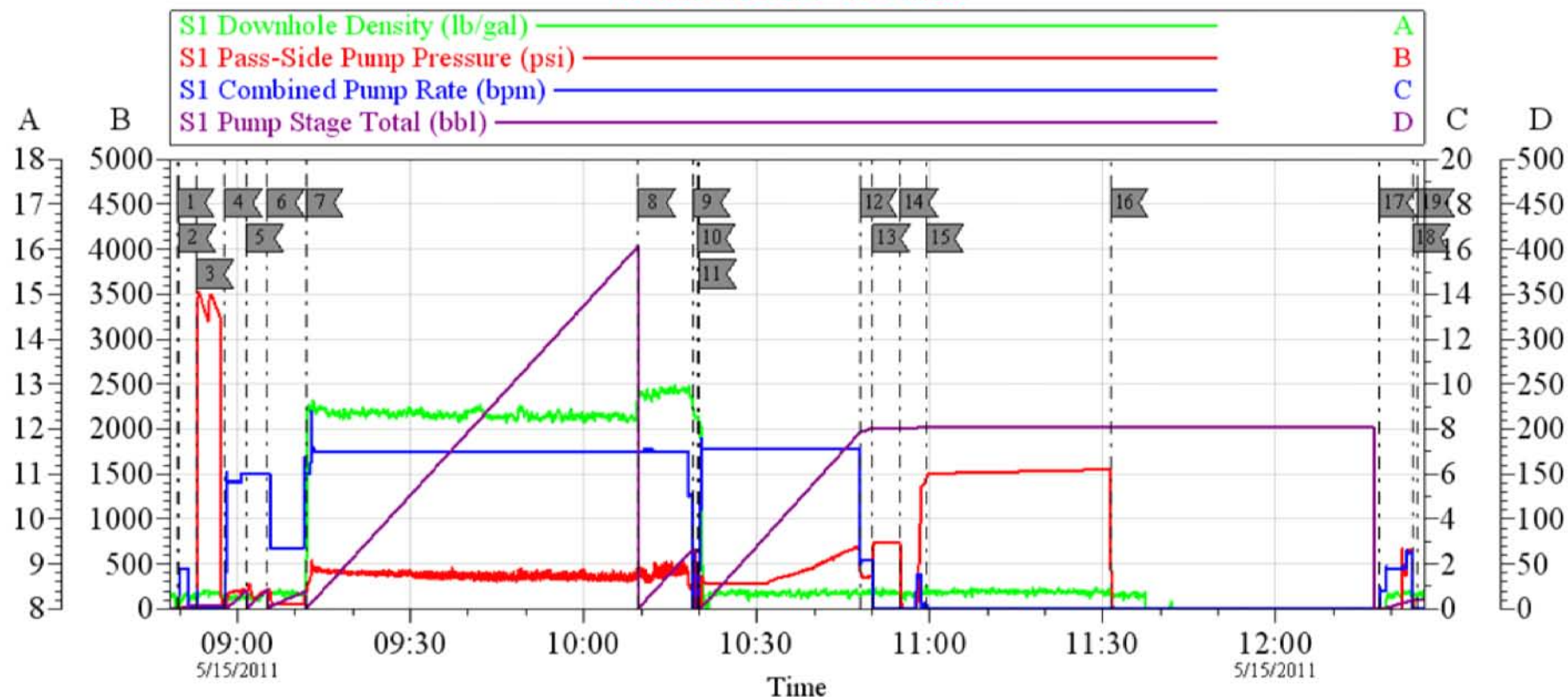
Customer: OXY
Well Description: CC 697-05-80B
Company Rep: ALEX VALLEGAS

Job Date: 15-May-2011
Job Type: SURFACE
Cement Supervisor: CRAIK KUKUS

Sales Order #: 8169048
ADC Used: YES
Elite #/Operator: ELITE 8 CHRIS KUKUS

OptiCem v6.4.8
15-May-11 11:58

OXY SURFACE HP 353



Local Event Log

1	START JOB	08:49:31	2	PRIMELINES	08:49:48	3	PRESSURE TEST	08:52:50
4	PUMP H2O SPACER	08:57:48	5	PUMP GEL SPACER	09:01:33	6	PUMP H2O SPACER	09:05:10
7	PUMP LEAD CEMENT	09:11:50	8	PUMP TAIL CEMENT	10:09:30	9	SHUT DOWN	10:18:56
10	DROP PLUG	10:19:45	11	PUMP H2O DISPLACEMENT	10:19:58	12	SLOW RATE	10:47:57
13	BUMP PLUG	10:50:07	14	CHECK FLOATS	10:54:57	15	PRESSURE TEST CSG	10:59:26
16	CHECK FLOATS	11:31:24	17	PUMP SUGAR WATER	12:17:59	18	SHUT DOWN	12:23:44
19	END JOB	12:24:33						

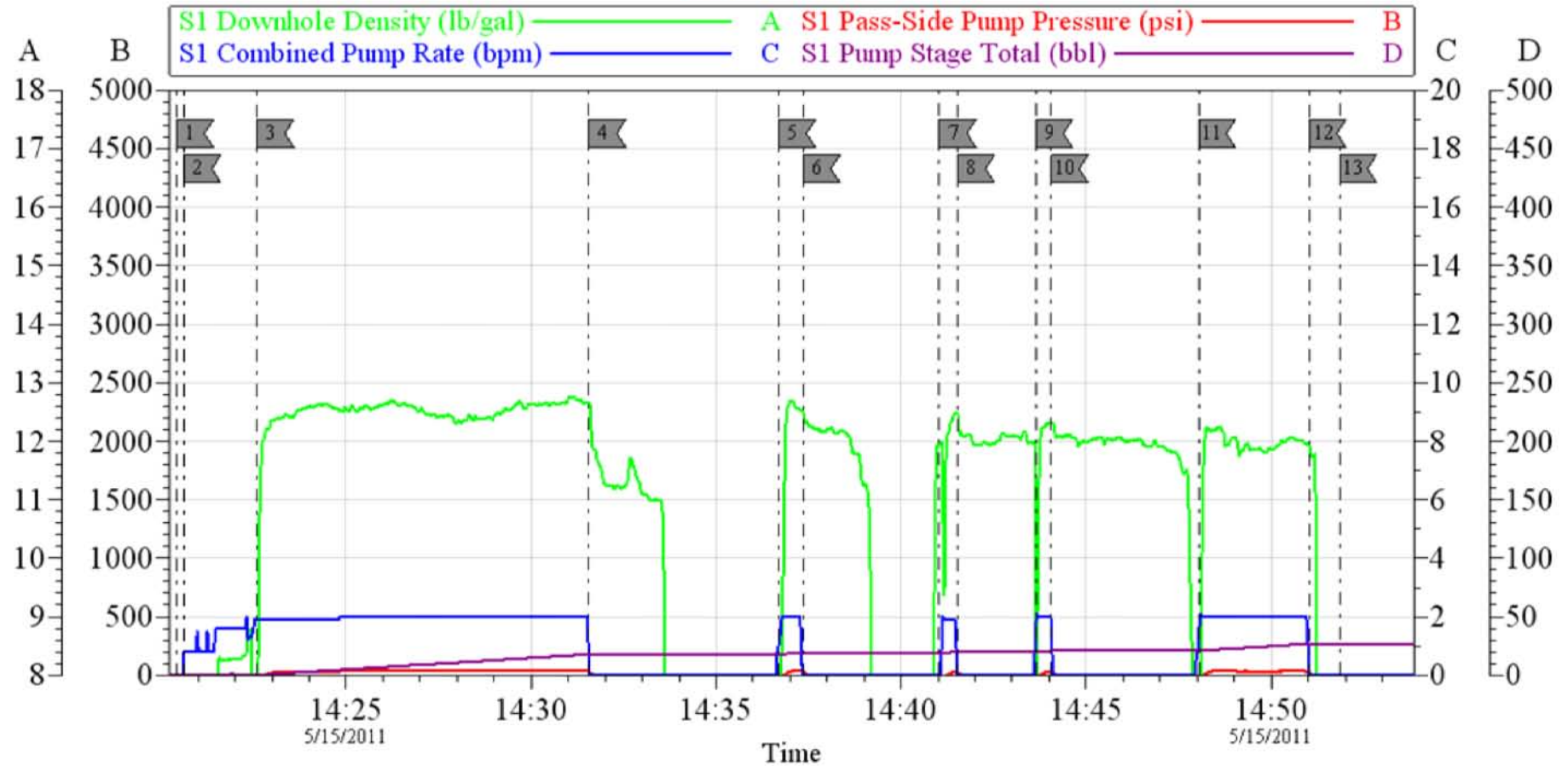
Customer: OXY
Well Description: CC 697-05-80B
Company Rep: ALEX VALLEGAS

Job Date: 15-May-2011
Job Type: SURFACE
Cement Supervisor: CRAIK KUKUS

Sales Order #: 8169048
ADC Used: YES
Elite #/Operator: ELITE 8 CHRIS KUKUS

OptiCem v6.4.8
15-May-11 12:40

OXY TOP OUT #1

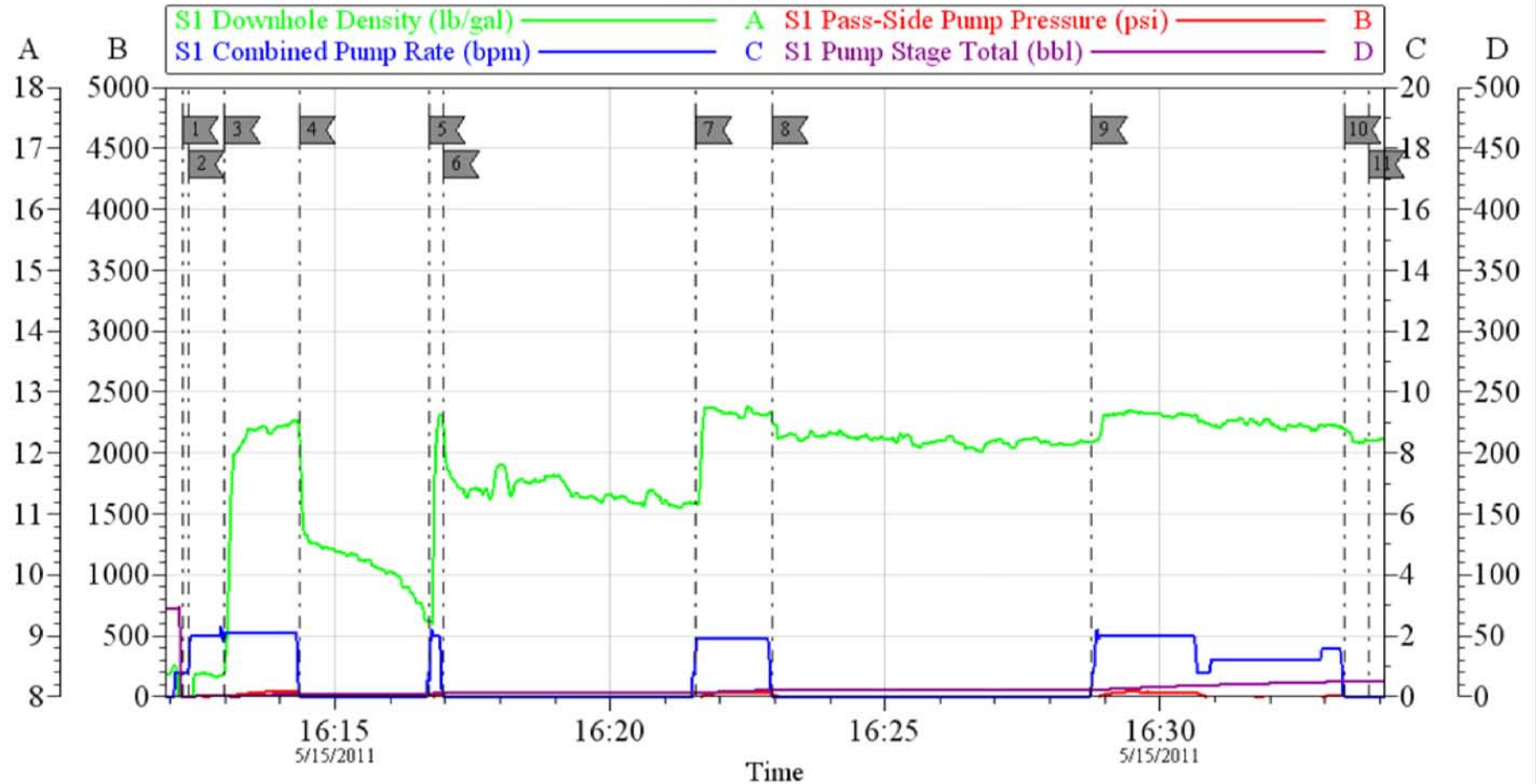


Local Event Log					
1	START JOB	14:20:26	2	PUMP WATERAHEAD	14:20:37
3	PUMP CEMENT	14:22:36	4	SHUT DOWN	14:31:34
5	PUMP CEMENT	14:36:42	6	SHUT DOWN	14:37:21
7	PUMP CEMENT	14:41:02	8	SHUT DOWN	14:41:32
9	PUMP CEMENT	14:43:38	10	SHUT DOWN	14:44:03
11	PUMP CEMENT	14:48:02	12	SHUT DOWN	14:51:02
13	END JOB	14:51:51			

Customer:	OXY	Job Date:	15-May-2011	Sales Order #:	8132490
Well Description:	CC 697-05-80B	Job Type:	TOP OUT	ADC Used:	YES
Company Rep:	ALEX	Cement Supervisor:	CRAIG KUKUS	Elite #/Operator:	ELITE8 CHRIS KUKUS

OptiCern v6.4.8
15-May-11 15:16

OXY TOP OUT #2



Local Event Log					
1	START JOB	16:12:13	2	PUMP WATER AHEAD	16:12:20
3	PUMP CEMENT	16:12:59	4	SHUT DOWN	16:14:21
5	PUMP CEMENT	16:16:42	6	SHUT DOWN	16:16:58
7	PUMP CEMENT	16:21:33	8	SHUT DOWN	16:22:57
9	PUMP CEMENT	16:28:45	10	SHUT DOWN	16:33:22
11	END JOB	16:33:48			

Customer: **OXY**
Well Description: **CC 697-05-80B**
Company Rep: **ALEX**

Job Date: **15-May-2011**
Job Type: **TOP OUT 2**
Cement Supervisor: **CRAIG KUKUS**

Sales Order #: **8169048**
ADC Used: **YES**
Elite #/Operator: **ELITE 8 CHRIS KUKUS**

OptiCem v6.4.8
15-May-11 16:51

HALLIBURTON

Water Analysis Report

Company: OXY

Submitted by: CRAIG KUKUS

Attention:

Lease CC

Well # 697-05-80B

Date: 5/15/2011

Date Rec.: 5/15/2011

S.O.# 8169048

Job Type: SURFACE

Specific Gravity	<i>MAX</i>	
pH	<i>8</i>	<i>7</i>
Potassium (K)	<i>5000</i>	<i>250</i> Mg / L
Calcium (Ca)	<i>500</i>	<i>250</i> Mg / L
Iron (FE2)	<i>300</i>	<i>3</i> Mg / L
Chlorides (Cl)	<i>3000</i>	<i>0</i> Mg / L
Sulfates (SO ₄)	<i>1500</i>	<i>below200</i> Mg / L
Chlorine (Cl ₂)		<i>0</i> Mg / L
Temp	<i>40-80</i>	<i>58</i> Deg
Total Dissolved Solids		<i>320</i> Mg / L

Respectfully: CRAIG KUKUS

Title: CEMENTING SUPERVISOR

Location: GRANDJUNCTION CO

NOTICE:

This report is limited to the described sample tested. Any person using or relying on this report agrees that Halliburton shall not be liable for any loss or damage whether due to act or omission resulting from such report c

Sales Order #: 8169048	Line Item: 10	Survey Conducted Date: 5/15/2011
Customer: OXY GRAND JUNCTION EBUSINESS		Job Type (BOM): CMT SURFACE CASING BOM
Customer Representative: ALEX VALLEGAS		API / UWI: (leave blank if unknown) 05-045-18733
Well Name: CC		Well Number: 697-05-80B
Well Type: Development Well	Well Country: United States of America	
H2S Present:	Well State: Colorado	Well County: Garfield

Dear Customer,

We hope that you were satisfied with the service quality of this job performed by Halliburton. It is the aim of our management and service personnel to deliver equipment and service of a standard unmatched in the service sector of the energy industry.

Please take the time to let us know if our performance met with your satisfaction. Please be as critical as possible to ensure we constantly improve our service. Your comments are of great value to us and are intended for the exclusive use of Halliburton.

CUSTOMER SATISFACTION SURVEY

CATEGORY	CUSTOMER SATISFACTION RESPONSE	
Survey Conducted Date	The date the survey was conducted	5/15/2011
Survey Interviewer	The survey interviewer is the person who initiated the survey.	CRAIG KUKUS (HX19742)
Customer Participation	Did the customer participate in this survey? (Y/N)	Yes
Customer Representative	Enter the Customer representative name	ALEX VALLEGAS
HSE	Was our HSE performance satisfactory? Circle Y or N	Yes
Equipment	Were you satisfied with our Equipment? Circle Y or N	Yes
Personnel	Were you satisfied with our people? Circle Y or N	Yes
Customer Comment	Customer's Comment	
Job DVA	Did we provide job DVA above our normal service today? Circle Y or N	No
Time	Please enter hours in decimal format to nearest quarter hour.	
Other	Enter short text for other efficiencies gained.	
Customer Initials	Customer's Initials	
Please provide details	Please describe how the job efficiencies were gained.	

CUSTOMER SIGNATURE

Sales Order #: 8169048	Line Item: 10	Survey Conducted Date: 5/15/2011
Customer: OXY GRAND JUNCTION EBUSINESS		Job Type (BOM): CMT SURFACE CASING BOM
Customer Representative: ALEX VALLEGAS		API / UWI: (leave blank if unknown) 05-045-18733
Well Name: CC		Well Number: 697-05-80B
Well Type: Development Well	Well Country: United States of America	
H2S Present:	Well State: Colorado	Well County: Garfield

KEY PERFORMANCE INDICATORS

General	
Survey Conducted Date	5/15/2011
The date the survey was conducted	

Cementing KPI Survey	
Type of Job	0
Select the type of job. (Cementing or Non-Cementing)	
Select the Maximum Deviation range for this Job	Vertical
What is the highest deviation for the job you just completed? This may not be the maximum well deviation.	
Total Operating Time (hours)	8
Total Operating Hours Including Rig-up, Pumping, Rig-down. Enter in decimal format.	
HSE Incident, Accident, Injury	No
HSE Incident, Accident, Injury. This should be recordable incidents only.	
Was the job purpose achieved?	Yes
Was the job delivered correctly as per customer agreed design?	
Operating Hours (Pumping Hours)	5
Total number of hours pumping fluid on this job. Enter in decimal format.	
Customer Non-Productive Rig Time (hrs)	0
Lost time due to Halliburton in the start, execution, or completion of an ordered service or product, or delays in a follow-on service. Enter in decimal format. 0 if none.	
Type of Rig Classification Job Was Performed	Drilling Rig (Portable)
Type Of Rig (classification) Job Was Performed On	
Number Of JSAs Performed	6
Number Of Jsas Performed	
Number of Unplanned Shutdowns	0
Unplanned shutdown is when injection stops for any period of time.	
Was this a Primary Cement Job (Yes / No)	Yes

Sales Order #: 8169048	Line Item: 10	Survey Conducted Date: 5/15/2011
Customer: OXY GRAND JUNCTION EBUSINESS		Job Type (BOM): CMT SURFACE CASING BOM
Customer Representative: ALEX VALLEGAS		API / UWI: (leave blank if unknown) 05-045-18733
Well Name: CC		Well Number: 697-05-80B
Well Type: Development Well	Well Country: United States of America	
H2S Present:	Well State: Colorado	Well County: Garfield

Primary Cement Job= Casing job, Liner job, or Tie-back job.	
Did We Run Wiper Plugs? Did We Run Top And Bottom Casing Wiper Plugs?	Top
Mixing Density of Job Stayed in Designed Density Range (0-100%) Density Range defined as +/- .20 ppg. Calculation: Total BBLs cement mixed at designed density divided by total BBLs of cement multiplied by 100	98
Was Automated Density Control Used? Was Automated Density Control (ADC) Used ?	Yes
Pump Rate (percent) of Job Stayed At Designed Pump Rate Pump Rate range defined as +/- 1bbl/min. Calculation: Total BBLs of fluid pumped at the designed rate divided by Total BBLs of fluid pumped, multiplied by 100	98
Nbr of Remedial Sqz Jobs Rqd - Competition Number Of Remedial Squeeze Jobs Required After Primary Job Performed By Competition	0
Nbr of Remedial Plug Jobs Rqd - HES Number Of Remedial Plug Jobs Needed After Primary Plug Pumped By HES	0
Nbr of Remedial Sqz Jobs Rqd - HES Number Of Remedial Squeeze Jobs Required After Primary Job Performed By HES	0