

Well Name: **Wildflower 35-27**

Surface Location: Wildflower 19-27 Pad Sec.27-T2N-R68W  
North American Datum 1983 US State Plane 1983 Colorado Northern Zone

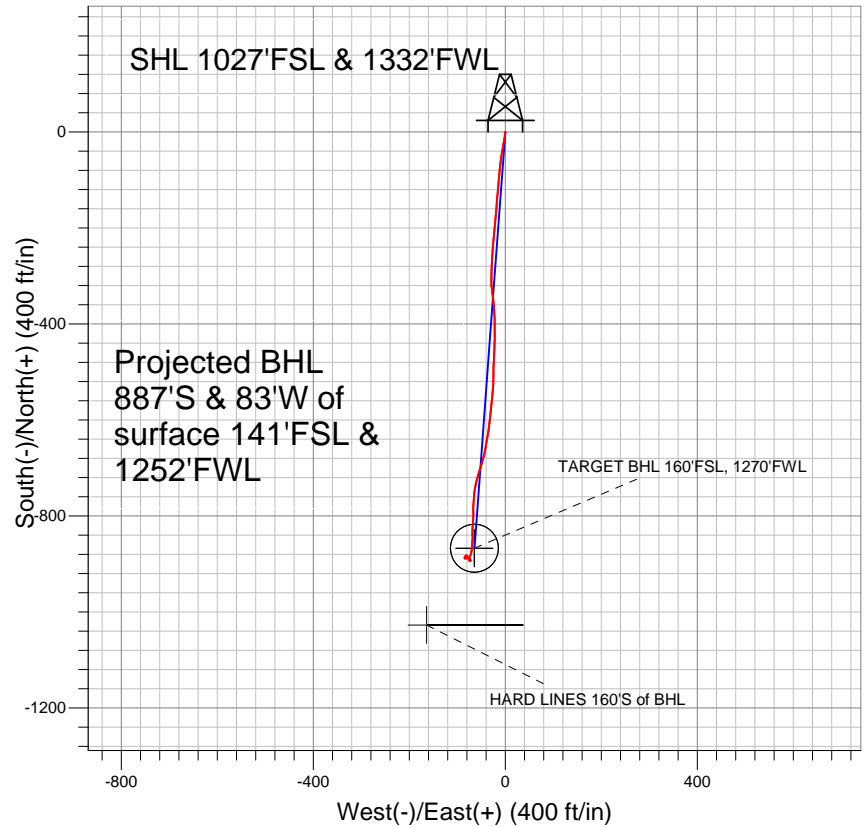
Ground Elevation: 5008.0

+N/-S	+E/-W	Northing	Easting	Latitude	Longitude
0.0	0.0	1281532.69	3141524.52	40.105091	-104.994050

Original Well Elev WELL @ 5023.0ft (Original Well Elev)

Slot

## Anadarko, Weld County CO

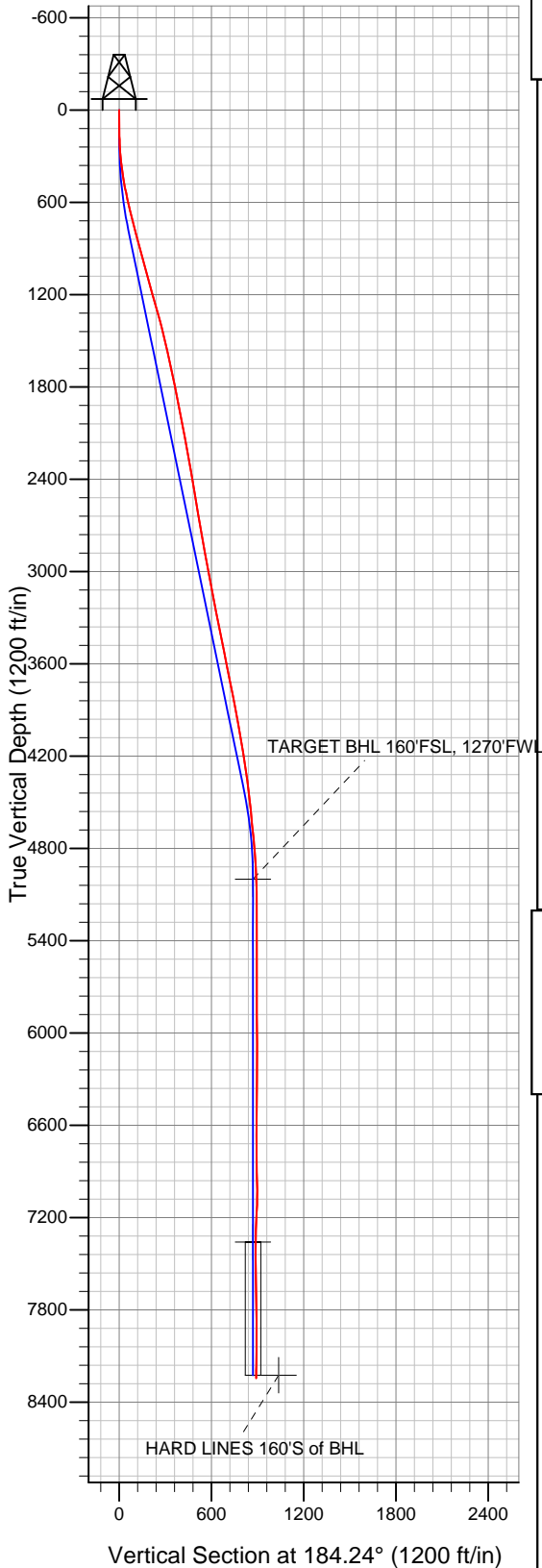


### LEGEND

- △ Wildflower 35-27, Wellbore #1, Plan #1 (1-17-11) V0
- Wellbore #1
- Survey #1

## Final Survey Plot

Projected Final Survey -  
8334'MD & 8244'TVD @ 890'VS  
0.7 deg Inc 329.7 deg AZ



Project: SEC.27-T2N-R68W  
Site: Wildflower 19-27 Pad Sec.27-T2N-R68W  
Well: Wildflower 35-27  
Plan: Wellbore #1



## **Directional**

### **Anadarko, Weld County CO**

**SEC.27-T2N-R68W**

**Wildflower 19-27 Pad Sec.27-T2N-R68W**

**Wildflower 35-27**

**Wellbore #1**

**Survey: Survey #1**

### **Standard Survey Report**

**14 April, 2011**

<b>Company:</b>	Anadarko, Weld County CO	<b>Local Co-ordinate Reference:</b>	Well Wildflower 35-27
<b>Project:</b>	SEC.27-T2N-R68W	<b>TVD Reference:</b>	WELL @ 5023.0ft (Original Well Elev)
<b>Site:</b>	Wildflower 19-27 Pad Sec.27-T2N-R68W	<b>MD Reference:</b>	WELL @ 5023.0ft (Original Well Elev)
<b>Well:</b>	Wildflower 35-27	<b>North Reference:</b>	True
<b>Wellbore:</b>	Wellbore #1	<b>Survey Calculation Method:</b>	Minimum Curvature
<b>Design:</b>	Wellbore #1	<b>Database:</b>	Landmark

<b>Project</b>	SEC.27-T2N-R68W, Weld County, Colorado		
<b>Map System:</b>	US State Plane 1983	<b>System Datum:</b>	Mean Sea Level
<b>Geo Datum:</b>	North American Datum 1983		Using Well Reference Point
<b>Map Zone:</b>	Colorado Northern Zone		Using geodetic scale factor

Site		Wildflower 19-27 Pad Sec.27-T2N-R68W			
Site Position:		Northing:	1,281,592.81 ft	Latitude:	40.105256
From:	Lat/Long	Easting:	3,141,524.17 ft	Longitude:	-104.994050
Position Uncertainty:	0.0 ft	Slot Radius:	"	Grid Convergence:	0.33 °

Well	Wildflower 35-27					
Well Position	+N/-S	0.0 ft	Northing:	1,281,532.69 ft	Latitude:	40.105091
	+E/-W	0.0 ft	Easting:	3,141,524.52 ft	Longitude:	-104.994050
Position Uncertainty		0.0 ft	Wellhead Elevation:	ft	Ground Level:	5,008.0 ft

<b>Wellbore</b>	Wellbore #1				
<b>Magnetics</b>	<b>Model Name</b>	<b>Sample Date</b>	<b>Declination (°)</b>	<b>Dip Angle (°)</b>	<b>Field Strength (nT)</b>
	IGRF2010	3/30/2011	8.99	66.78	52,972

<b>Design</b>	Wellbore #1				
<b>Audit Notes:</b>					
<b>Version:</b>	1.0	<b>Phase:</b>	ACTUAL	<b>Tie On Depth:</b>	0.0
<b>Vertical Section:</b>	<b>Depth From (TVD) (ft)</b>	<b>+N/-S (ft)</b>	<b>+E/-W (ft)</b>	<b>Direction (°)</b>	
	0.0	0.0	0.0	184.24	

<b>Survey Program</b>	<b>Date</b>	4/14/2011			
<b>From (ft)</b>	<b>To (ft)</b>	<b>Survey (Wellbore)</b>	<b>Tool Name</b>	<b>Description</b>	
171.0	8,334.0	Survey #1 (Wellbore #1)	MWD	MWD - Standard	

<b>Survey</b>										
<b>Measured Depth (ft)</b>	<b>Inclination (°)</b>	<b>Azimuth (°)</b>	<b>Vertical Depth (ft)</b>	<b>+N/-S (ft)</b>	<b>+E/-W (ft)</b>	<b>Vertical Section (ft)</b>	<b>Dogleg Rate (°/100ft)</b>	<b>Build Rate (°/100ft)</b>	<b>Turn Rate (°/100ft)</b>	
0.0	0.00	0.00	0.0	0.0	0.0	0.0	0.00	0.00	0.00	
171.0	0.90	181.40	171.0	-1.3	0.0	1.3	0.53	0.53	0.00	
261.0	3.90	188.60	260.9	-5.1	-0.5	5.1	3.34	3.33	8.00	
354.0	6.90	188.50	353.5	-13.7	-1.8	13.8	3.23	3.23	-0.11	
445.0	9.40	190.70	443.6	-26.4	-4.0	26.7	2.77	2.75	2.42	
538.0	11.70	189.30	535.0	-43.2	-6.9	43.6	2.49	2.47	-1.51	
630.0	12.80	187.80	624.9	-62.5	-9.8	63.1	1.24	1.20	-1.63	
722.0	14.30	185.00	714.3	-83.9	-12.2	84.6	1.78	1.63	-3.04	
775.0	14.90	185.20	765.6	-97.2	-13.4	98.0	1.14	1.13	0.38	
830.0	15.90	184.30	818.6	-111.8	-14.6	112.6	1.87	1.82	-1.64	
926.0	14.90	185.40	911.2	-137.2	-16.7	138.1	1.09	-1.04	1.15	
1,021.0	14.70	183.60	1,003.0	-161.4	-18.6	162.3	0.53	-0.21	-1.89	
1,116.0	15.30	186.10	1,094.8	-185.9	-20.7	186.9	0.93	0.63	2.63	

<b>Company:</b>	Anadarko, Weld County CO	<b>Local Co-ordinate Reference:</b>	Well Wildflower 35-27
<b>Project:</b>	SEC.27-T2N-R68W	<b>TVD Reference:</b>	WELL @ 5023.0ft (Original Well Elev)
<b>Site:</b>	Wildflower 19-27 Pad Sec.27-T2N-R68W	<b>MD Reference:</b>	WELL @ 5023.0ft (Original Well Elev)
<b>Well:</b>	Wildflower 35-27	<b>North Reference:</b>	True
<b>Wellbore:</b>	Wellbore #1	<b>Survey Calculation Method:</b>	Minimum Curvature
<b>Design:</b>	Wellbore #1	<b>Database:</b>	Landmark

Survey

Measured Depth (ft)	Inclination (°)	Azimuth (°)	Vertical Depth (ft)	+N/-S (ft)	+E/-W (ft)	Vertical Section (ft)	Dogleg Rate (°/100ft)	Build Rate (°/100ft)	Turn Rate (°/100ft)
1,211.0	16.20	185.00	1,186.2	-211.5	-23.2	212.7	1.00	0.95	-1.16
1,306.0	16.00	185.10	1,277.5	-237.8	-25.5	239.0	0.21	-0.21	0.11
1,401.0	15.20	183.70	1,369.0	-263.3	-27.5	264.6	0.93	-0.84	-1.47
1,496.0	13.50	181.90	1,461.0	-286.8	-28.7	288.1	1.85	-1.79	-1.89
1,592.0	12.90	180.10	1,554.5	-308.7	-29.1	310.0	0.76	-0.63	-1.88
1,687.0	12.10	172.90	1,647.3	-329.2	-27.9	330.3	1.84	-0.84	-7.58
1,782.0	11.90	171.40	1,740.2	-348.7	-25.2	349.6	0.39	-0.21	-1.58
1,877.0	12.30	177.90	1,833.1	-368.5	-23.3	369.2	1.49	0.42	6.84
1,972.0	11.20	178.00	1,926.1	-387.9	-22.6	388.5	1.16	-1.16	0.11
2,070.0	10.50	177.60	2,022.3	-406.3	-21.9	406.8	0.72	-0.71	-0.41
2,165.0	10.00	181.70	2,115.8	-423.2	-21.8	423.6	0.93	-0.53	4.32
2,260.0	10.80	182.90	2,209.2	-440.3	-22.5	440.8	0.87	0.84	1.26
2,355.0	10.80	180.10	2,302.6	-458.1	-23.0	458.6	0.55	0.00	-2.95
2,450.0	9.50	185.40	2,396.1	-474.8	-23.7	475.3	1.68	-1.37	5.58
2,546.0	9.20	180.10	2,490.8	-490.4	-24.5	490.9	0.95	-0.31	-5.52
2,641.0	9.50	181.50	2,584.5	-505.8	-24.7	506.3	0.40	0.32	1.47
2,736.0	9.80	180.00	2,678.2	-521.7	-24.9	522.2	0.41	0.32	-1.58
2,831.0	9.50	186.40	2,771.9	-537.6	-25.8	538.0	1.17	-0.32	6.74
2,926.0	10.40	186.10	2,865.4	-553.9	-27.6	554.5	0.95	0.95	-0.32
3,022.0	10.50	185.00	2,959.8	-571.3	-29.2	571.9	0.23	0.10	-1.15
3,117.0	10.60	185.70	3,053.2	-588.6	-30.9	589.3	0.17	0.11	0.74
3,212.0	11.20	186.60	3,146.5	-606.4	-32.8	607.2	0.66	0.63	0.95
3,307.0	11.50	188.80	3,239.7	-625.0	-35.3	625.9	0.55	0.32	2.32
3,402.0	10.60	190.30	3,332.9	-642.9	-38.3	644.0	0.99	-0.95	1.58
3,497.0	11.60	190.40	3,426.1	-660.9	-41.6	662.2	1.05	1.05	0.11
3,592.0	11.80	194.50	3,519.1	-679.7	-45.8	681.2	0.90	0.21	4.32
3,688.0	11.00	198.90	3,613.3	-697.9	-51.2	699.8	1.23	-0.83	4.58
3,783.0	12.00	195.70	3,706.3	-716.0	-56.8	718.2	1.25	1.05	-3.37
3,878.0	12.10	192.70	3,799.3	-735.2	-61.7	737.7	0.67	0.11	-3.16
3,973.0	10.40	185.50	3,892.4	-753.4	-64.7	756.2	2.32	-1.79	-7.58
4,068.0	9.50	184.30	3,986.0	-769.8	-66.1	772.6	0.97	-0.95	-1.26
4,163.0	9.80	181.30	4,079.7	-785.7	-66.8	788.5	0.62	0.32	-3.16
4,259.0	9.70	179.50	4,174.3	-801.9	-67.0	804.7	0.33	-0.10	-1.88
4,354.0	9.20	183.80	4,268.0	-817.5	-67.4	820.3	0.91	-0.53	4.53
4,449.0	7.00	184.10	4,362.0	-830.9	-68.3	833.7	2.32	-2.32	0.32
4,544.0	5.60	176.20	4,456.5	-841.3	-68.4	844.0	1.73	-1.47	-8.32
4,639.0	6.40	182.70	4,550.9	-851.2	-68.4	853.9	1.10	0.84	6.84
4,734.0	6.20	184.40	4,645.4	-861.6	-69.0	864.3	0.29	-0.21	1.79
4,830.0	5.70	186.20	4,740.8	-871.5	-69.9	874.3	0.56	-0.52	1.88
4,924.0	4.20	203.60	4,834.5	-879.3	-71.8	882.2	2.24	-1.60	18.51
5,019.0	3.50	195.80	4,929.3	-885.3	-74.0	888.3	0.92	-0.74	-8.21
5,088.8	2.15	184.95	4,999.0	-888.6	-74.7	891.7	2.07	-1.94	-15.55
<b>TARGET BHL 160°FSL, 1270°FWL</b>									
5,114.0	1.70	176.90	5,024.2	-889.5	-74.7	892.6	2.07	-1.78	-31.92
5,209.0	1.10	118.00	5,119.2	-891.3	-73.8	894.3	1.55	-0.63	-62.00
5,305.0	0.60	124.20	5,215.1	-892.0	-72.6	894.9	0.53	-0.52	6.46
5,400.0	0.20	177.70	5,310.1	-892.5	-72.2	895.4	0.53	-0.42	56.32
5,495.0	0.50	271.20	5,405.1	-892.6	-72.6	895.5	0.58	0.32	98.42
5,590.0	0.50	283.10	5,500.1	-892.5	-73.4	895.5	0.11	0.00	12.53
5,685.0	0.50	305.40	5,595.1	-892.2	-74.1	895.2	0.20	0.00	23.47
5,780.0	0.30	317.10	5,690.1	-891.8	-74.6	894.8	0.23	-0.21	12.32
5,875.0	0.20	343.50	5,785.1	-891.4	-74.9	894.5	0.16	-0.11	27.79
5,971.0	0.20	180.10	5,881.1	-891.4	-74.9	894.5	0.41	0.00	-170.21
6,161.0	0.90	161.90	6,071.1	-893.2	-74.4	896.2	0.38	0.37	-9.58

<b>Company:</b>	Anadarko, Weld County CO	<b>Local Co-ordinate Reference:</b>	Well Wildflower 35-27
<b>Project:</b>	SEC.27-T2N-R68W	<b>TVD Reference:</b>	WELL @ 5023.0ft (Original Well Elev)
<b>Site:</b>	Wildflower 19-27 Pad Sec.27-T2N-R68W	<b>MD Reference:</b>	WELL @ 5023.0ft (Original Well Elev)
<b>Well:</b>	Wildflower 35-27	<b>North Reference:</b>	True
<b>Wellbore:</b>	Wellbore #1	<b>Survey Calculation Method:</b>	Minimum Curvature
<b>Design:</b>	Wellbore #1	<b>Database:</b>	Landmark

Survey

Measured Depth (ft)	Inclination (°)	Azimuth (°)	Vertical Depth (ft)	+N/-S (ft)	+E/-W (ft)	Vertical Section (ft)	Dogleg Rate (°/100ft)	Build Rate (°/100ft)	Turn Rate (°/100ft)
6,256.0	0.20	53.00	6,166.1	-893.8	-74.1	896.8	1.03	-0.74	-114.63
6,351.0	0.70	4.50	6,261.1	-893.1	-73.9	896.1	0.62	0.53	-51.05
6,446.0	0.80	356.60	6,356.1	-891.9	-73.9	894.9	0.15	0.11	-8.32
6,542.0	0.70	357.70	6,452.1	-890.6	-74.0	893.6	0.11	-0.10	1.15
6,637.0	0.50	6.10	6,547.1	-889.6	-73.9	892.7	0.23	-0.21	8.84
6,732.0	0.10	334.80	6,642.1	-889.1	-73.9	892.2	0.44	-0.42	-32.95
6,827.0	0.50	192.40	6,737.1	-889.5	-74.0	892.5	0.61	0.42	-149.90
6,922.0	1.70	152.70	6,832.1	-891.1	-73.5	894.1	1.42	1.26	-41.79
7,017.0	1.40	174.90	6,927.0	-893.5	-72.7	896.5	0.70	-0.32	23.37
7,113.0	0.90	299.80	7,023.0	-894.3	-73.3	897.3	2.14	-0.52	130.10
7,208.0	2.00	326.40	7,118.0	-892.6	-74.9	895.7	1.33	1.16	28.00
7,303.0	2.50	330.60	7,212.9	-889.4	-76.8	892.6	0.55	0.53	4.42
7,398.0	2.60	337.60	7,307.8	-885.6	-78.6	889.0	0.34	0.11	7.37
7,450.4	1.95	327.74	7,360.2	-883.7	-79.6	887.2	1.44	-1.24	-18.80
<b>TARGET CIRCLE 160'FSL &amp; 1270'FWL</b>									
7,493.0	1.50	313.80	7,402.8	-882.7	-80.3	886.3	1.44	-1.06	-32.75
7,589.0	1.30	223.00	7,498.7	-882.7	-82.0	886.3	2.08	-0.21	-94.58
7,684.0	1.30	223.00	7,593.7	-884.2	-83.5	888.0	0.00	0.00	0.00
7,779.0	1.80	193.00	7,688.7	-886.5	-84.5	890.3	0.99	0.53	-31.58
7,874.0	0.60	133.60	7,783.7	-888.3	-84.5	892.1	1.66	-1.26	-62.53
7,970.0	0.70	120.80	7,879.7	-888.9	-83.6	892.7	0.18	0.10	-13.33
8,064.0	0.60	78.70	7,973.7	-889.1	-82.7	892.8	0.51	-0.11	-44.79
8,160.0	0.70	14.50	8,069.7	-888.5	-82.0	892.1	0.72	0.10	-66.88
8,255.0	0.70	335.00	8,164.6	-887.4	-82.1	891.0	0.50	0.00	-41.58
8,284.0	0.70	329.70	8,193.6	-887.1	-82.3	890.7	0.22	0.00	-18.28
8,314.4	0.70	329.70	8,224.0	-886.7	-82.5	890.4	0.00	0.00	0.00
<b>HARD LINES 160'S of BHL</b>									
8,334.0	0.70	329.70	8,243.6	-886.5	-82.6	890.2	0.00	0.00	0.00

Checked By: _____	Approved By: _____	Date: _____
-------------------	--------------------	-------------