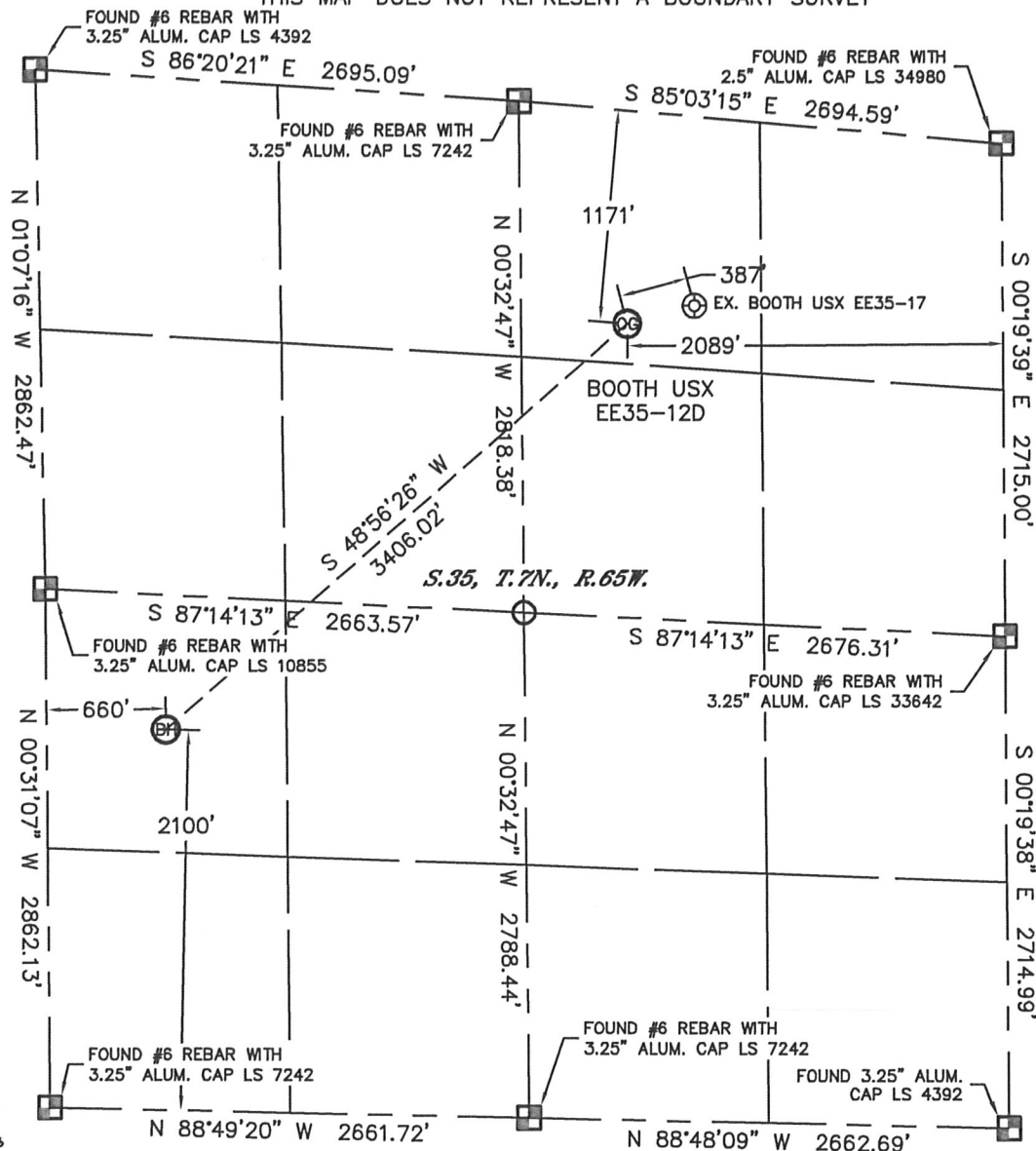


# WELL LOCATION CERTIFICATE

SECTION: 35  
TOWNSHIP: 7N  
RANGE: 65W

THIS MAP DOES NOT REPRESENT A BOUNDARY SURVEY



In accordance with a request from Matt Verbit with Noble Energy Inc., Lat40°, Inc. has determined the surface location of the BOOTH USX EE35-12D to be 1171' from the NORTH line and 2089' from the EAST line and the bottom hole to be 2100' from the SOUTH line and 660' from the WEST line as measured at right angles from the section lines of Section 35, Township 7 North, Range 65 West of the Sixth Principal Meridian, County of Weld, State of Colorado.

I hereby state that this Well Location Certificate was prepared by me, or under my direct supervision, that the fieldwork was completed on 6/10/11, for and on behalf of Noble Energy Inc. That this is not a Land Survey Plat or an Improvement Survey Plat, and that it is not to be relied upon for establishment of fence, building, or other future Improvement lines.

**NOTE:**

- 1) Bearings shown are Grid Bearings of the Colorado State Plane Coordinate System, North Zone, North American Datum 1983/2007. The lineal dimensions as contained herein are based upon the "U.S. Survey Foot."
- 2) Ground elevations are based on an observed GPS elevation (NAVD 1988 DATUM).
- 3) NEAREST EXISTING WELL: BOOTH USX EE35-17, 387'
- 4) IMPROVEMENTS: See LOCATION DRAWING for all visible improvements within 400' of disturbed area.
- 5) SURFACE USE: CROP FIELD
- 6) INSTRUMENT OPERATOR: ADAM KELLY

**NOTE**

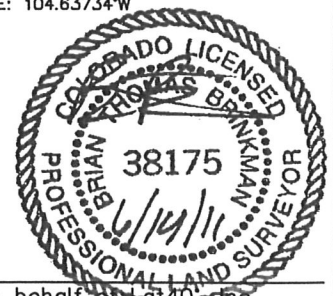
According to Colorado law, you must commence any legal action based upon any defect in this W.L.C. within three years after you discover such defect. In no event, may any action based upon any defect in this survey be commenced more than ten years after the date of the certificate shown hereon. (13-80-105 C.R.S.)

**LEGEND**

- = ALIQUOT MONUMENT AS DESCRIBED
- = CALCULATED POSITION

**SURFACE LOCATION**  
LATITUDE: 40.53479°N  
LONGITUDE: 104.62803°W  
PDOP: 3.6  
ELEV: 4831'  
1/4, 1/4: NW1/4NE1/4  
NEAREST PROPERTY LINE: 68' WEST

**BOTTOM HOLE**  
LATITUDE: 40.52872°N  
LONGITUDE: 104.63734°W



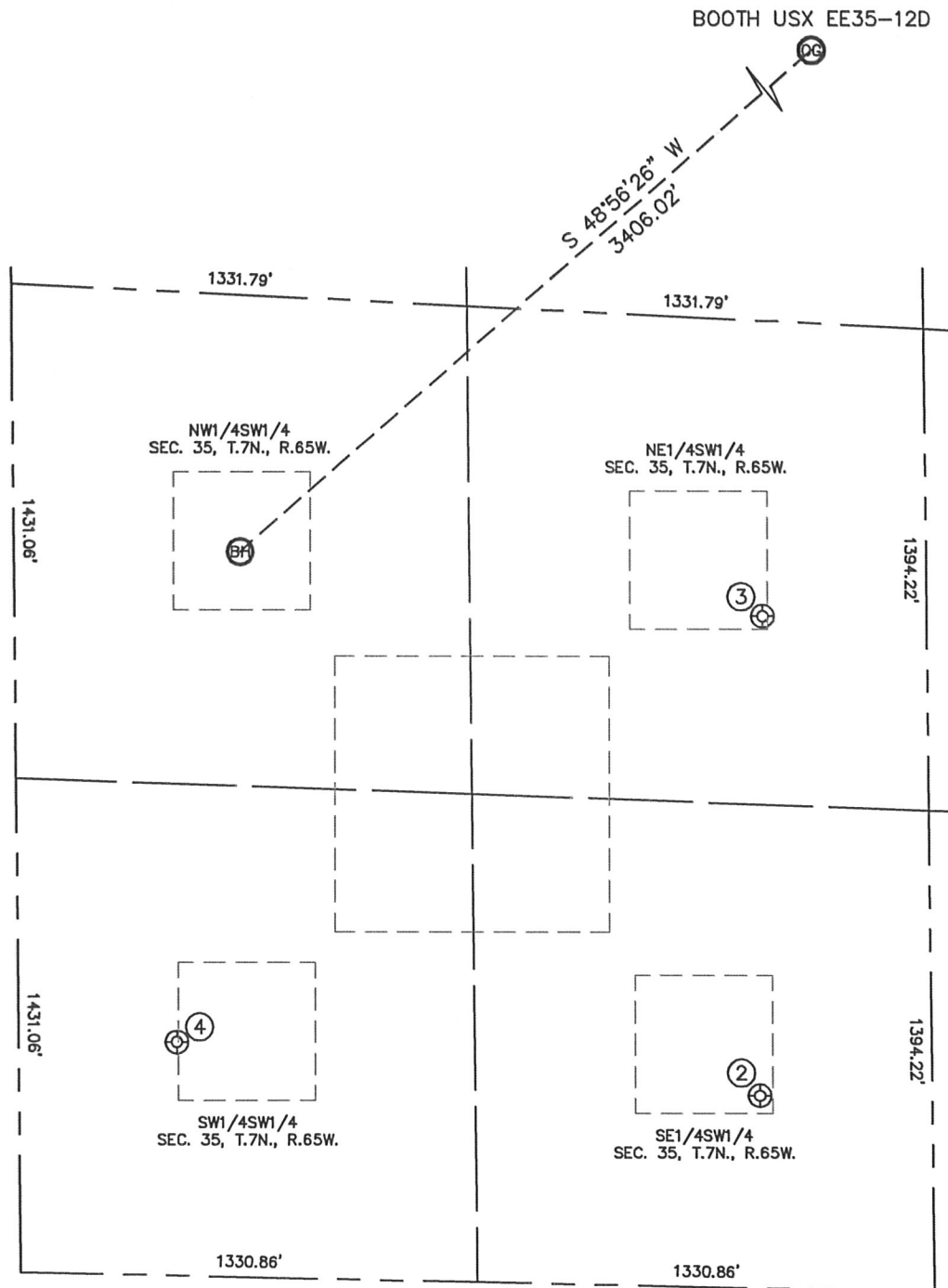
Brian T. Brinkman—On behalf of Lat40°, Inc.  
Colorado Licensed Professional  
Land Surveyor No. 38175

PROJECT#: 2011149

# SITE SKETCH

BOOTH USX EE35-12D

SECTION: 35  
TOWNSHIP: 7N  
RANGE: 65W



②

BOOTH 24-35  
SE1/4SW1/4  
557' FSL  
2158' FWL  
LAT-40.52436°N  
LONG-104.63196°W  
PDOP: 1.8  
ELEV: 4831'

③

BOOTH 23-35  
NE1/4SW1/4  
1946' FSL  
2180' FWL  
LAT-40.52817°N  
LONG-104.63188°W  
PDOP: 1.5  
ELEV: 4826'

④

BOOTH 14-35  
SW1/4SW1/4  
676' FSL  
481' FWL  
LAT-40.52482°N  
LONG-104.63806°W  
PDOP: 3.0  
ELEV: 4853'

