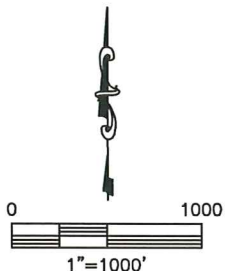
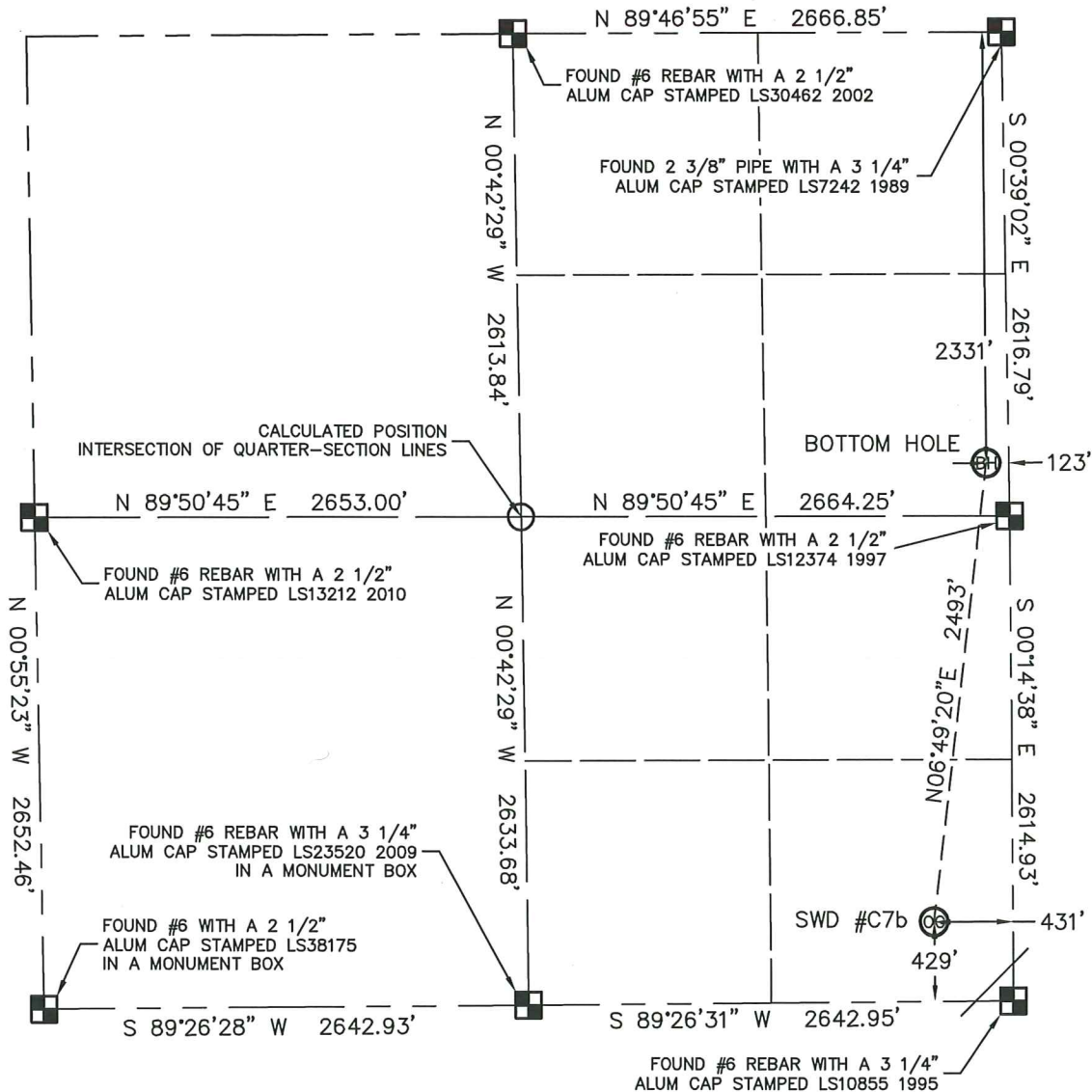


WELL LOCATION CERTIFICATE

SWD #C7b

THIS MAP DOES NOT REPRESENT A BOUNDARY SURVEY

SECTION: 34
TOWNSHIP: 7N
RANGE: 63WIn accordance with a request from JIM GODDARD with CONQUEST WATER SERVICES

King Surveyors, Inc. has determined the surface location of SWD #C7b to be 429' from the SOUTH line and 431' from the EAST line and the bottom hole to be 2331' from the NORTH line and 123' from the EAST line, as measured at right angles, from the section lines of Section 34, Township 7 North, Range 63 West of the Sixth Principal Meridian, County of Weld, State of Colorado.

I hereby state that this Well Location Certificate was prepared by me, or under my direct supervision, that the fieldwork was completed on 7-18-2011, for and on behalf of CONQUEST WATER SERVICES. That this is not a Land Survey Plat or an Improvement Survey Plat, and that it is not to be relied upon for establishment of fence, building, or other future improvement lines.

NOTE:

- 1) Bearings shown are Grid Bearings of the Colorado State Plane Coordinate System, North Zone, North American Datum 1983/2007. The lineal dimensions as contained herein are based upon the "U.S. Survey Foot."
- 2) Ground elevations are based on an observed GPS elevation (NAVD 1988 DATUM).
- 3) NEAREST EXISTING WELL: SWD #C7a 603' WEST
- 4) IMPROVEMENTS: See LOCATION DRAWING for all visible improvements within 400' of the disturbed area.
- 5) SURFACE USE: WATER FACILITY SITE
- 6) FIELD OPERATOR: RON EDWARDS

NOTE

According to Colorado law, you must commence any legal action based upon any defect in this W.L.C. within three years after you discover such defect. In no event, may any action based upon any defect in this survey be commenced more than ten years after the date of the certificate shown hereon. (13-80-105 C.R.S.)

LEGEND

- = ALIQUOT MONUMENT AS DESCRIBED
- = CALCULATED POSITION

SURFACE LOCATION

LATITUDE: 40.52414°N
LONGITUDE: 104.41456°W
PDOP: 1.2
ELEV: 4715'
1/4, 1/4: SE1/4SE1/4
NEAREST PROPERTY LINE: 169' NORTH

Colorado Licensed Professional Land Surveyor #38106

Michael Chad Dilka - On Behalf Of King Surveyors, Inc.
Colorado Licensed Professional Land Surveyor #38106

7/22/2011

PROJECT#: 2010142