

Steil Surveying Services, LLC

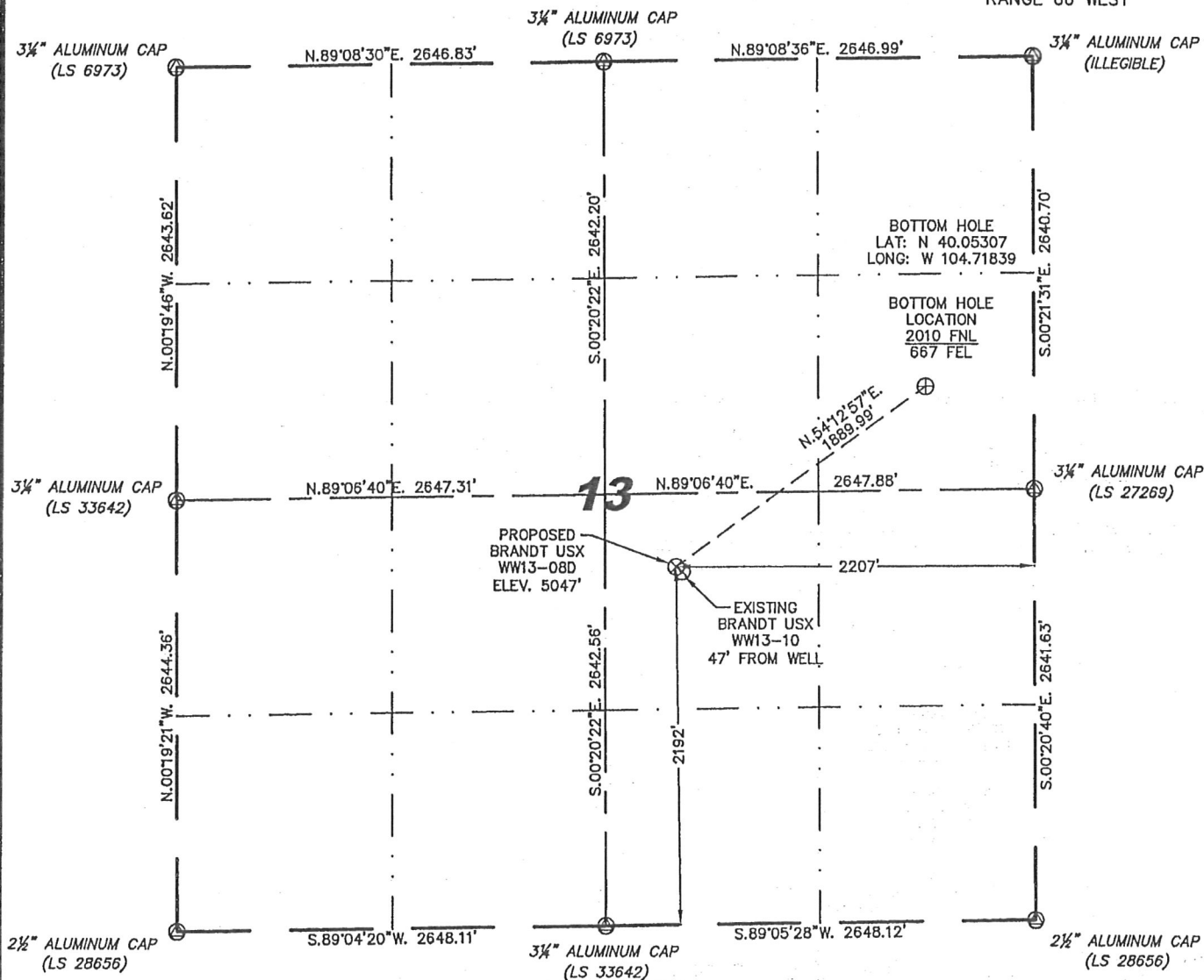
1102 West 19th Street P.O. BOX 2073

Cheyenne, Wyoming 82001

# WELL LOCATION CERTIFICATE

THIS MAP DOES NOT REPRESENT A BOUNDARY SURVEY

SECTION 13  
TOWNSHIP 1 NORTH  
RANGE 66 WEST



0 1000

Scale: 1" = 1000'

IN ACCORDANCE WITH A REQUEST FROM BRIAN DeROSE - NOBLE ENERGY INC, STEIL SURVEYING SERVICES, LLC HAS DETERMINED THE LOCATION OF THE BRANDT USX WW13-08D WELL TO BE 2192' FSL, 2207' FEL, AS MEASURED AT NINETY (90) DEGREES FROM THE SECTION LINES, SECTION 13, TOWNSHIP 1 NORTH, RANGE 66 WEST, 6TH PRINCIPLE MERIDIAN, WELD COUNTY, COLORADO.

I HEREBY CERTIFY THAT THIS WELL LOCATION CERTIFICATE WAS PREPARED BY ME, OR UNDER MY DIRECT SUPERVISION, THAT THE FIELD WORK WAS COMPLETED ON 02/03/2011, FOR AND ON BEHALF OF NOBLE ENERGY INC, THAT IT IS NOT A LAND SURVEY PLAT OR AN IMPROVEMENT SURVEY PLAT, AND THAT IT IS NOT TO BE RELIED UPON FOR ESTABLISHMENT OF FENCE, BUILDING, OR OTHER FUTURE IMPROVEMENT LINES.

## NOTES:

- 1) BASIS OF BEARINGS FOR THIS MAP ARE BASED UPON GPS OBSERVATIONS MADE ON 05/21/2008 BETWEEN MONUMENTS LOCATED AT THE SOUTHEAST SECTION CORNER AND THE NORTHEAST SECTION CORNER OF SAID SECTION AND WITH ALL BEARINGS SHOWN HEREON RELATIVE THERETO.
- 2) COORDINATES SHOWN ARE COLORADO STATE PLANE (NORTH ZONE) NAD 83
- 3) ELEVATIONS ARE BASED UPON NGS OPUS SOLUTION NAVD 88 DATUM.
- 4) THE NEAREST EXISTING WELL IS: BRANDT USX WW13-10, 47' SOUTHEAST.
- 5) SEE LOCATION DRAWING FOR ALL IMPROVEMENTS WITHIN VISIBLE IMPROVEMENT LIMIT.
- 6) THE LOCATION FALLS IN CROP LAND.

LATITUDE &amp; LONGITUDE (NAD 83 SURFACE HOLE).

LATITUDE: N 40.05007'

LONGITUDE: W 104.72391'

PDOP: 1.8

QUARTER-QUARTER: NW/4SE/4

NEAREST PROPERTY LINE: 230' NORTH

## LEGEND

⊙ FOUND SURVEY MONUMENT PER  
MONUMENT RECORD - EXCEPTIONS NOTED.

(C) CALCULATED DIMENSION



Completed 02/08/2011

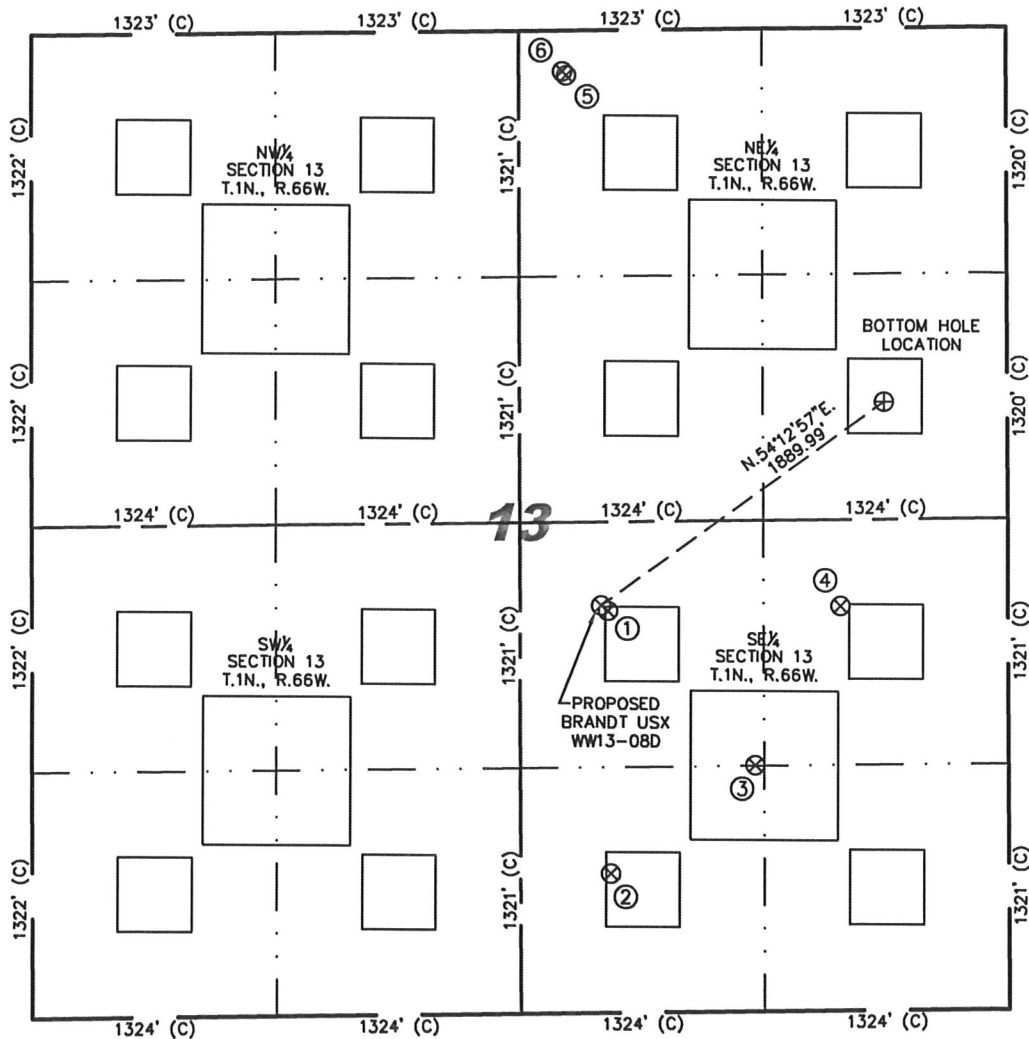
David C. Holmes  
Professional Land Surveyor Registration No. 32828  
State of Colorado

JOB #: 11086

NOTICE: According to Colorado law you MUST commence any legal action based upon any defect in this W.L.C. within three years after you first discover such defect. In no event may any action based upon any defect in this W.L.C. be commenced more than ten years from this said date of the certification shown hereon.

# SITE SKETCH – BRANDT USX WW13-08D

SECTIONS 13  
TOWNSHIP 1 NORTH  
RANGE 66 WEST



①  
BRANDT USX  
WW13-10  
NW/SE SEC. 13  
2163' FSL  
2169' FEL  
EL 5046'  
N 40.04999  
W 104.72377  
PDOP 2.3

②  
BRANDT 34-13  
SW/SE SEC. 13  
749' FSL  
2158' FEL  
EL 5037'  
N 40.04611  
W 104.72374  
PDOP 2.3

③  
BRANDT USX  
WW13-23  
NW/SE SEC. 13  
1324' FSL  
1371' FEL  
EL 5033'  
N 40.04770  
W 104.72093  
PDOP 2.7

④  
BRANDT 43-13  
NE/SE SEC. 13  
2177' FSL  
907' FEL  
EL 5033'  
N 40.05005  
W 104.71926  
PDOP 2.7

⑤  
PILKINGTON  
41-13D  
NW/NE SEC. 13  
240' FNL  
2390' FEL  
EL 5065'  
N 40.05789  
W 104.72453  
PDOP 2.1

⑥  
PILKINGTON  
31-13D  
NW/NE SEC. 13  
219' FNL  
2411' FEL  
EL 5066'  
N 40.05795  
W 104.72461  
PDOP 2.1

## NOTES:

- 1) THIS SKETCH DOES NOT REPRESENT A BOUNDARY SURVEY.
- 2) THE DATUM FOR THE LATITUDES AND LONGITUDES ON THIS SKETCH IS NAD83.



0 1000

Scale: 1" = 1000'