

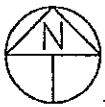
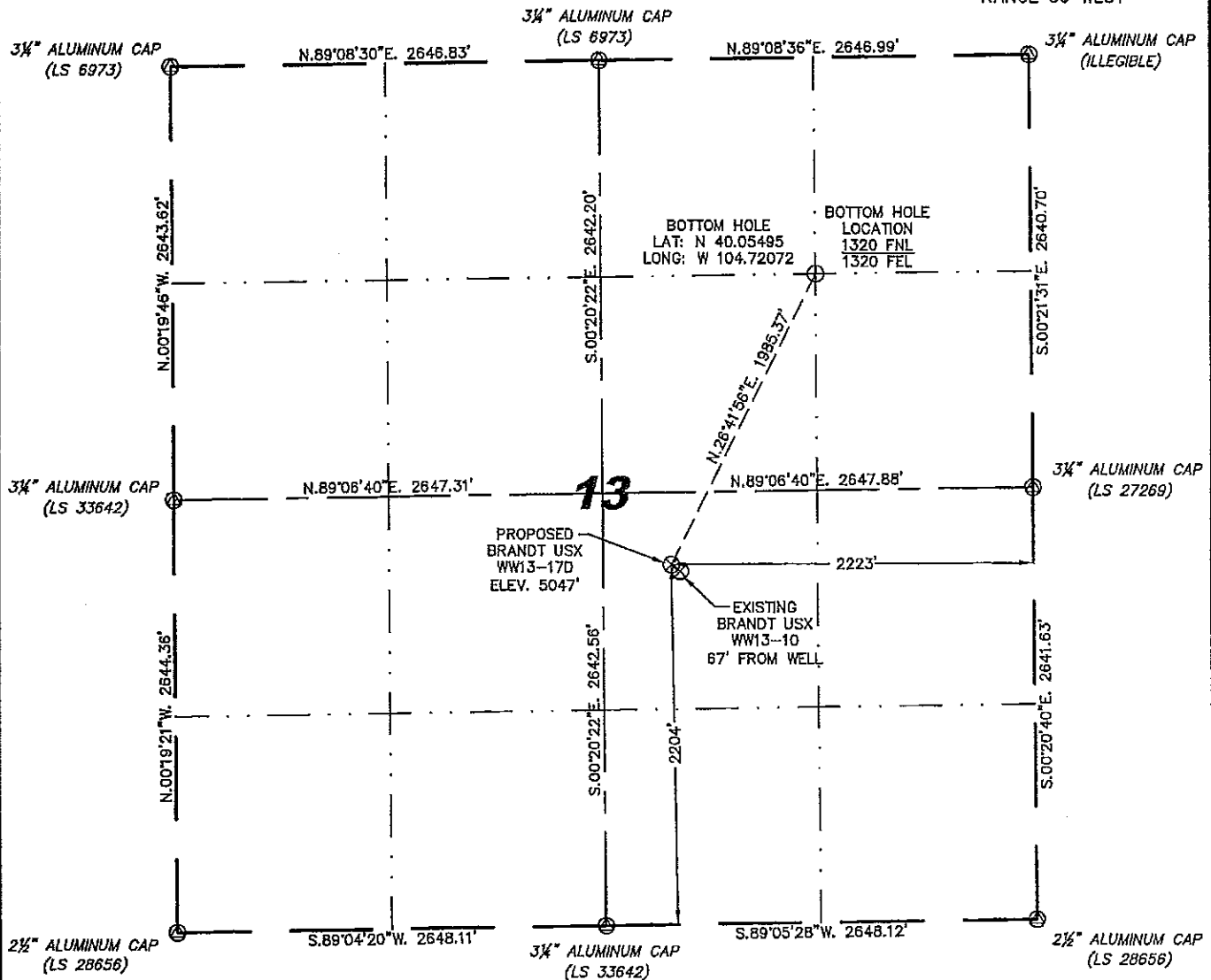
Stell Surveying Services, LLC

1102 West 19th Street P.O. BOX 2073

Cheyenne, Wyoming 82001

**WELL LOCATION CERTIFICATE**  
THIS MAP DOES NOT REPRESENT A BOUNDARY SURVEY

SECTION 13  
TOWNSHIP 1 NORTH  
RANGE 66 WEST



0 1000

Scale: 1" = 1000'

IN ACCORDANCE WITH A REQUEST FROM BRIAN DeROSE - NOBLE ENERGY INC., STELL SURVEYING SERVICES, LLC HAS DETERMINED THE LOCATION OF THE BRANDT USX WW13-17D WELL TO BE 2204' FSL, 2223' FEL, AS MEASURED AT NINETY (90) DEGREES FROM THE SECTION LINES, SECTION 13, TOWNSHIP 1 NORTH, RANGE 66 WEST, 6TH PRINCIPLE MERIDIAN, WELD COUNTY, COLORADO.

I HEREBY CERTIFY THAT THIS WELL LOCATION CERTIFICATE WAS PREPARED BY ME, OR UNDER MY DIRECT SUPERVISION, THAT THE FIELD WORK WAS COMPLETED ON 04/29/2011, FOR AND ON BEHALF OF NOBLE ENERGY INC., THAT IT IS NOT A LAND SURVEY PLAT OR AN IMPROVEMENT SURVEY PLAT, AND THAT IT IS NOT TO BE RELIED UPON FOR ESTABLISHMENT OF FENCE, BUILDING, OR OTHER FUTURE IMPROVEMENT LINES.

**NOTES:**

- 1) BASIS OF BEARINGS FOR THIS MAP ARE BASED UPON GPS OBSERVATIONS MADE ON 05/21/2008 BETWEEN MONUMENTS LOCATED AT THE SOUTHEAST SECTION CORNER AND THE NORTHEAST SECTION CORNER OF SAID SECTION AND WITH ALL BEARINGS SHOWN HEREON RELATIVE THERETO.
- 2) COORDINATES SHOWN ARE COLORADO STATE PLANE (NORTH ZONE) NAD 83
- 3) ELEVATIONS ARE BASED UPON NGS OPUS SOLUTION NAVD 88 DATUM.
- 4) THE NEAREST EXISTING WELL IS: BRANDT USX WW13-10, 67' SOUTHEAST.
- 5) SEE LOCATION DRAWING FOR ALL IMPROVEMENTS WITHIN VISIBLE IMPROVEMENT LIMIT.
- 6) THE LOCATION FALLS IN CROP LAND.

LATITUDE & LONGITUDE (NAD 83 SURFACE HOLE):

LATITUDE: N 40.05010°

LONGITUDE: W 104.72396°

PDOP: 2.2

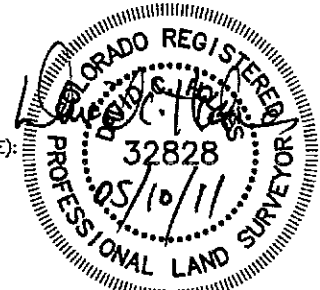
QUARTER-QUARTER: NW/4SE/4

NEAREST PROPERTY LINE: 218' NORTH

**LEGEND**

⊙ FOUND SURVEY MONUMENT PER  
MONUMENT RECORD - EXCEPTIONS NOTED.

(C) CALCULATED DIMENSION



Completed 05/09/2011

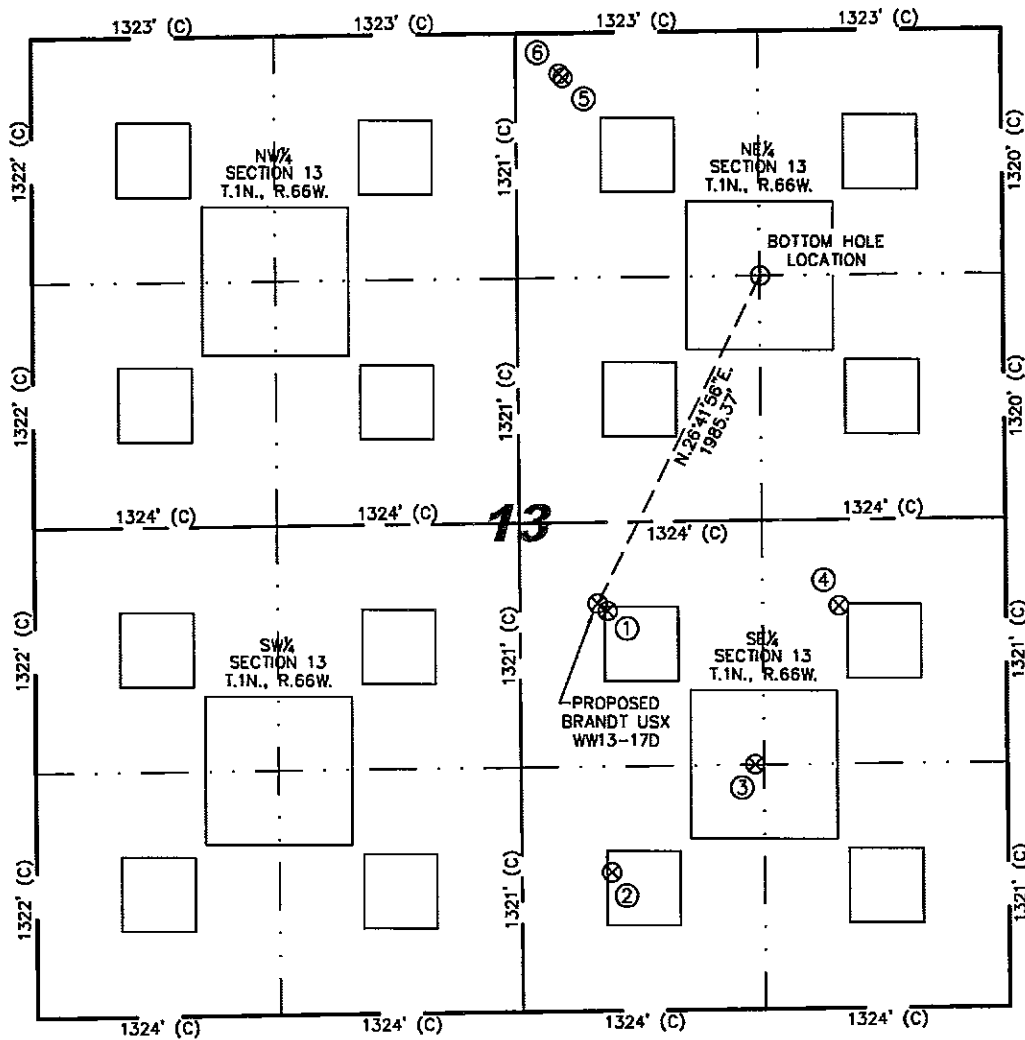
David C. Holmes  
Professional Land Surveyor Registration No. 32828  
State of Colorado

JOB #: 11086

NOTICE: According to Colorado law you MUST commence any legal action based upon any defect in this W.L.C. within three years after you first discover such defect. In no event may any action based upon any defect in this W.L.C. be commenced more than ten years from this said date of the certification shown hereon.

# SITE SKETCH - BRANDT USX WW13-17D

SECTIONS 13  
TOWNSHIP 1 NORTH  
RANGE 66 WEST



①	②	③	④	⑤	⑥
BRANDT USX WW13-10 NW/SE SEC. 13 2163' FSL 2169' FEL EL 5046' N 40.04999 W 104.72377 PDOP 2.3	BRANDT 34-13 SW/SE SEC. 13 749' FSL 2158' FEL EL 5037' N 40.04811 W 104.72374 PDOP 2.3	BRANDT USX WW13-23 NW/SE SEC. 13 1324' FSL 1371' FEL EL 5033' N 40.04770 W 104.72093 PDOP 2.7	BRANDT 43-13 NE/SE SEC. 13 2177' FSL 907' FEL EL 5033' N 40.05005 W 104.71926 PDOP 2.7	PILKINGTON 41-13D NW/NE SEC. 13 240' FNL 2390' FEL EL 5065' N 40.05789 W 104.72453 PDOP 2.1	PILKINGTON 31-13D NW/NE SEC. 13 219' FNL 2411' FEL EL 5066' N 40.05795 W 104.72461 PDOP 2.1

## NOTES:

- THIS SKETCH DOES NOT REPRESENT A BOUNDARY SURVEY.
- THE DATUM FOR THE LATITUDES AND LONGITUDES ON THIS SKETCH IS NAD83.



0 1000

Scale: 1" = 1000'