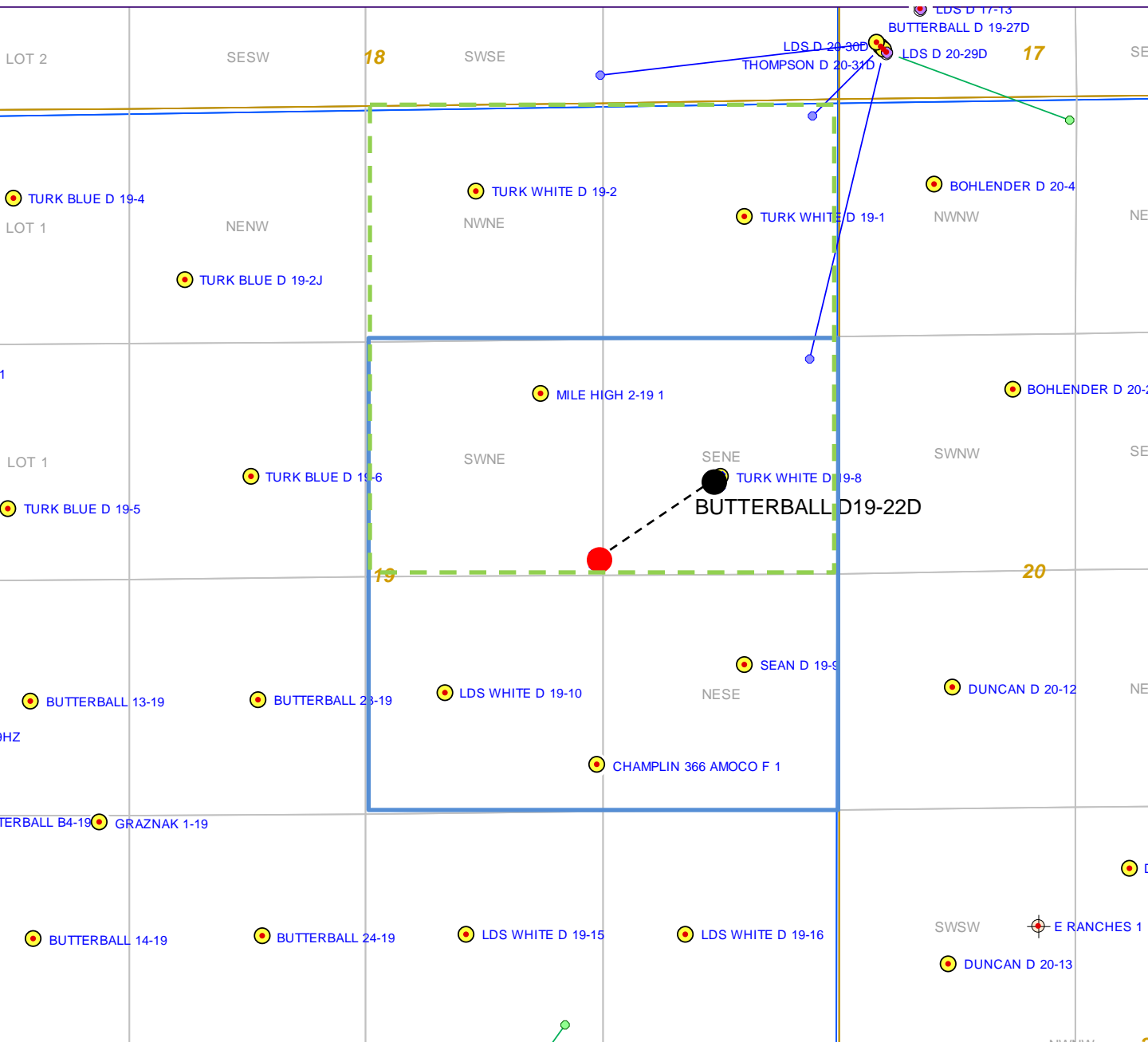


# BUTTERBALL D19-22D

## Noble Energy, Inc

### SW/4NE/4 Section 19, Township 3 North, Range 64 West



#### Legend



Proposed 160 acre spacing unit



Bottom Hole Location



Bottom Hole Located NE/4 Section 19, Township 3 North, Range 64 West

**The governmental ¼ Section has less than 8 bottom hole wells producing from the  
Codell, Niobrara, and J-Sand formations.**