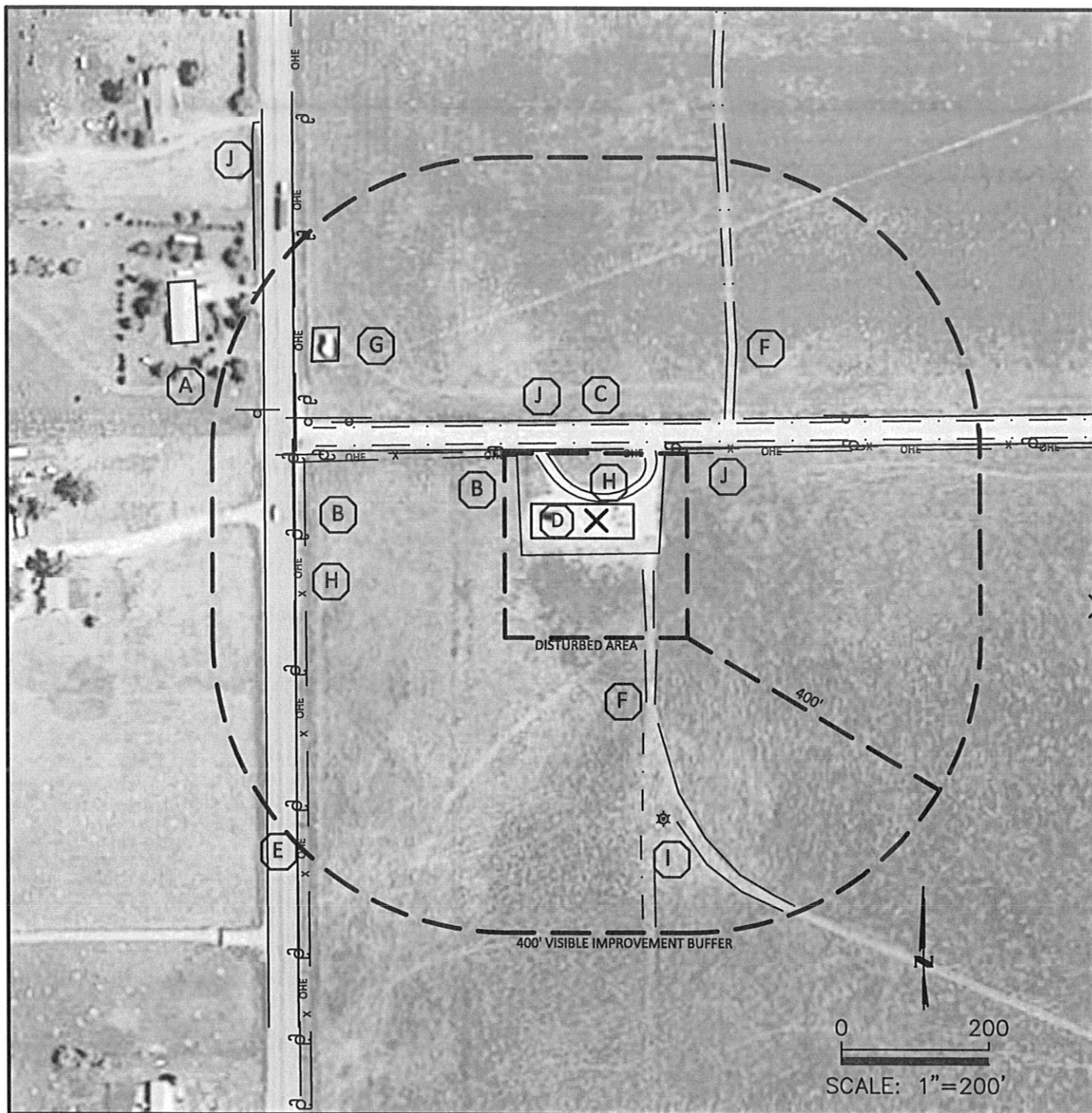


# PRODUCTION FACILITY LOCATION DRAWING FOR PROPOSED BUTTERBALL D19-20D

SECTION 19  
TOWNSHIP 3N  
RANGE 64W

MARCH 25, 2011

THIS MAP DOES NOT REPRESENT A BOUNDARY SURVEY



## IMPROVEMENTS

- |   |   |
|---|---|
| (A) RESIDENCE-595' NORTHWEST                  | (F) WELL ACCESS DIRT ROAD-141' NE, 93' SE |
| (B) OVERHEAD POWER LINES-397' WEST, 91' NORTH | (G) FEATURE NO LONGER IN FIELD            |
| (C) COUNTY ROAD 32-104' NORTH                 | (H) FENCE-383' WEST, 96' NORTH            |
| (D) NOBLE PRODUCTION FACILITY                 | (I) EXISTING WELL - TURK BLUE 19-4        |
| (E) KERSEY ROAD-398' WEST                     | (J) DIRT DITCH - 96' NORTH, 135' NORTH    |

## LEGEND

X REFERENCE POINT

## REFERENCE MARK DATA

ELEV=4808', PDOP=2.1  
FNL=115', FWL=432'  
LATITUDE: N 40.21764  
LONGITUDE: W 104.60112  
NEAREST PROPERTY LINE: 115' NORTH  
NEAREST ACTIVE RAILROAD: MORE THAN ONE MILE AWAY  
NEAREST BUILDING: RESIDENCE 595' NORTHWEST  
NEAREST COUNTY ROAD (CR32): 104' NORTH

THE ORIENTATION OF THE OIL AND GAS LOCATION AS SHOWN HEREON WAS DETERMINED BY NOBLE ENERGY.

DISTANCES FOR THE IMPROVEMENTS WERE MADE BY USING FIELD MEASUREMENTS AND AERIAL PHOTOGRAPHY. THE ACCURACY OF MEASUREMENTS MADE BY USING AERIAL PHOTOGRAPHY ARE WITHIN A TWENTY FOOT TOLERANCE.