

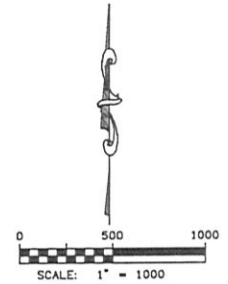
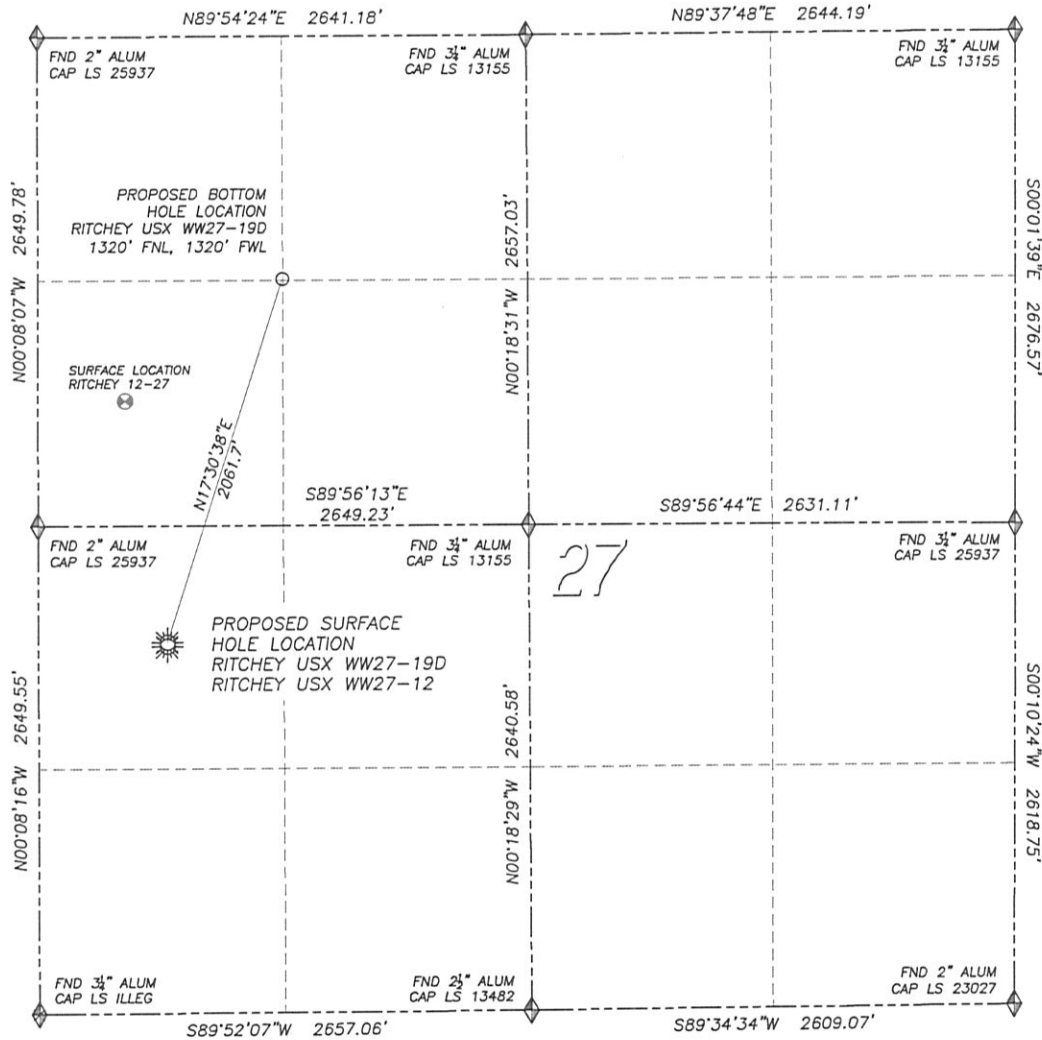
DALEY LAND SURVEYING, INC.

PARKER, CO. 80134

303 953 9841

MULTI-WELL PAD DIRECTIONAL LAYOUT RITCHEY USX WW27-19D & RAE L USX WW27-12

SECTION 27, TOWNSHIP 1 NORTH, RANGE 66 WEST OF THE 6TH PRINCIPAL MERIDIAN



- LEGEND**
- ◆ FOUND MONUMENT AS DESCRIBED
 - ☀ PROPOSED WELL
 - ⊙ EXISTING WELL
 - BOTTOM HOLE
 - ⊘ ABANDONED WELL

NAD 83 LATITUDE AND LONGITUDE

RITCHEY USX WW27-19D

SURFACE HOLE:

LATITUDE: N40.02049°

LONGITUDE: W104.77023°

ELEVATION: 5114'

FOOTAGE: 2014' FSL, 695' FWL

PDOP: 1.4

QTR/QTR: NW4/SW4

PROP LINE: 160'± NORTH

BOTTOM HOLE:

LATITUDE: N40.02588°

LONGITUDE: W104.76802°

FOOTAGE: 1320' FNL, 1320' FWL

NEAREST EXISTING WELL:

RITCHEY 12-27 SURFACE HOLE

LATITUDE: N40.02408°

LONGITUDE: W104.77106°

ELEVATION: 5081'

1327' NORTH

NAD 83 LATITUDE AND LONGITUDE

RAEL USX WW27-12

SURFACE HOLE:

LATITUDE: N40.02043°

LONGITUDE: W104.77023°

ELEVATION: 5114'

FOOTAGE: 1991' FSL, 695' FWL

PDOP: 1.4

QTR/QTR: NW4/SW4

PROP LINE: 183'± NORTH

NEAREST EXISTING WELL:

RITCHEY 12-27 SURFACE HOLE

LATITUDE: N40.02408°

LONGITUDE: W104.77106°

ELEVATION: 5081'

1350' NORTH

DALEY LAND SURVEYING, INC.

PARKER, CO. 80134

303 953 9841

MULTI-WELL PAD DIRECTIONAL LAYOUT
RITCHEY USX WW27-19D & RAE L USX WW27-12
SECTION 27, TOWNSHIP 1 NORTH, RANGE 66 WEST OF THE 6TH PRINCIPAL MERIDIAN

