

1953 Brass Cap  
0.6' High, Mound  
of Stones, Steel  
Post  
Lat: 39.695064°  
Long: 108.164144°

**T4S, R96W, 6th P.M.**

1953 Brass Cap  
Lat: 39.695125°  
Long: 108.150181°

**Encana OIL & GAS (USA) INC.**

Well location, SG #8514B-22 N22 496, located as shown in the SE 1/4 SW 1/4 of Section 22, T4S, R96W, 6th P.M., Garfield County, Colorado.

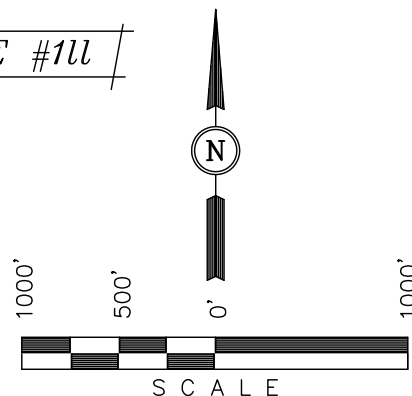
### BASIS OF ELEVATION

BENCH MARK (H79) LOCATED IN THE NE 1/4 OF SECTION 35, T4S, R98W, 6th P.M. TAKEN FROM THE BULL FORK QUADRANGLE, COLORADO, 7.5 MINUTE SERIES (TOPO GRAPHICAL MAP) PUBLISHED BY THE UNITED STATES DEPARTMENT OF THE INTERIOR, GEOLOGICAL SURVEY. SAID ELEVATION IS MARKED AS BEING 8535 FEET.

### BASIS OF BEARINGS

BASIS OF BEARINGS IS A G.P.S. OBSERVATION.

**FIGURE #111**



### CERTIFICATE

THIS IS TO CERTIFY THAT THE ABOVE PLAT WAS PREPARED FROM FIELD NOTES OF ACTUAL SURVEYS MADE BY ME OR UNDER MY SUPERVISION AND THAT THE SAME ARE TRUE AND CORRECT TO THE BEST OF MY KNOWLEDGE AND BELIEF.

REGISTERED LAND SURVEYOR  
REGISTRATION NO. 17492  
STATE OF COLORADO

REVISED: 12-14-10

**UINTAH ENGINEERING & LAND SURVEYING**  
85 SOUTH 200 EAST - VERNAL, UTAH 84078  
(435) 789-1017

### LEGEND:

└─┘ = 90° SYMBOL

● = PROPOSED WELL HEAD.

▲ = SECTION CORNERS LOCATED.

LINE TABLE		
LINE	BEARING	LENGTH
L1	S82°43'10"W	605.53'

PDOP = 2.9

NAD 83 (TARGET BOTTOM HOLE)		NAD 83 (SURFACE LOCATION)	
LATITUDE = 39°41'00.89" (39.683581)		LATITUDE = 39°41'01.64" (39.683789)	
LONGITUDE = 108°09'33.67" (108.159353)		LONGITUDE = 108°09'25.99" (108.157219)	
NAD 27 (TARGET BOTTOM HOLE)		NAD 27 (SURFACE LOCATION)	
LATITUDE = 39°41'00.98" (39.683606)		LATITUDE = 39°41'01.72" (39.683811)	
LONGITUDE = 108°09'31.38" (108.158717)		LONGITUDE = 108°09'23.70" (108.156583)	

SCALE 1" = 1000'	DATE SURVEYED: 08-03-10	DATE DRAWN: 11-23-10
PARTY B.H. B.J. C.H.	REFERENCES G.L.O. PLAT	
WEATHER COOL	FILE Encana OIL & GAS (USA) INC.	