

Cementing Cover Sheet

TO:	Chevron
FROM:	Robert Brost
REQUESTED ON LOCATION:	14-Oct-2008 15:00 MST
CUSTOMER:	CHEVRON - MID-CONTINENT EBIZ
WELL NAME/NBR/LEASE:	SKR , 598-25-CV-20 / SKR

TABLE OF CONTENTS:

Pump schedule	chart
	Job Summary
	Job Log
	Field ticket

MBU LEADER: BE SURE THAT YOU HAVE RECEIVED EACH OF THE DOCUMENTS LISTED ABOVE. IF NOT, CONTACT CENTRAL DISPATCH IMMEDIATELY.

The Road to Excellence Starts with Safety

Sold To #: 338668	Ship To #: 2666578	Quote #:	Sales Order #: 6237189
Customer: CHEVRON - MID-CONTINENT EBIZ	Customer Rep:		
Well Name: SKR	Well #: 598-25-CV-20	API/UWI #: 05-045-16242	
Field: SKINNER RIDGE	City (SAP): PARACHUTE	County/Parish: Garfield	State: Colorado
Lat: N 39.578 deg. OR N 39 deg. 34 min. 42.233 secs.	Long: W 108.341 deg. OR W -109 deg. 39 min. 31.417 secs.		
Contractor: CHEVRON	Rig/Platform Name/Num: H&P 316		
Job Purpose: Cement Surface Casing			
Well Type: Development Well	Job Type: Cement Surface Casing		
Sales Person: HARTLEY, RICHARD	Srvc Supervisor: BROST, ROBERT	MBU ID Emp #: 394382	

Job Personnel

HES Emp Name	Exp Hrs	Emp #	HES Emp Name	Exp Hrs	Emp #	HES Emp Name	Exp Hrs	Emp #
BROST, ROBERT W	9	394382	BROWN, TRAVIS A	9	396848	GAMBLE, BENJAMIN T	9	446666
LESLIE, MICHAEL D	9	320605						

Equipment

HES Unit #	Distance-1 way	HES Unit #	Distance-1 way	HES Unit #	Distance-1 way	HES Unit #	Distance-1 way

Job Hours

Date	On Location Hours	Operating Hours	Date	On Location Hours	Operating Hours	Date	On Location Hours	Operating Hours
10/14/08	5	1						
TOTAL			Total is the sum of each column separately					

Job

Formation Name				Job Times				
Formation Depth (MD)	Top		Bottom		Date	Time	Time Zone	
Form Type			BHST		Called Out	14 - Oct - 2008	11:00	MST
Job depth MD	1002. ft		Job Depth TVD	1045. ft	On Location	14 - Oct - 2008	14:50	MST
Water Depth			Wk Ht Above Floor	-25. ft	Job Started	14 - Oct - 2008	17:25	MST
Perforation Depth (MD)	From		To		Job Completed	14 - Oct - 2008	18:18	MST
					Departed Loc	14 - Oct - 2008	20:00	MST

Well Data

Description	New / Used	Max pressure psig	Size in	ID in	Weight lbm/ft	Thread	Grade	Top MD ft	Bottom MD ft	Top TVD ft	Bottom TVD ft
12 1/4 Open Hole Section				12.25					1045.		
8.625 Surface Casing	New		8.625	8.097	24.		K-55		1002.		

Sales/Rental/3rd Party (HES)

Description	Qty	Qty uom	Depth	Supplier
ADC (AUTO DENSITY CTRL) SYS, /JOB,ZI	1	JOB		
PORT. DAS W/CEMWIN;ACQUIRE W/HES, ZI	1	JOB		
PLUG,CMTG,TOP,8 5/8,HWE,7.20 MIN/8.09 MA	1	EA		

Tools and Accessories

Type	Size	Qty	Make	Depth	Type	Size	Qty	Make	Depth	Type	Size	Qty	Make
Guide Shoe					Packer					Top Plug	8 5/8"	1	
Float Shoe					Bridge Plug					Bottom Plug			
Float Collar					Retainer					SSR plug set			
Insert Float										Plug Container	8 5/8"	1	
Stage Tool										Centralizers			

Miscellaneous Materials

Gelling Agt	Conc	Surfactant	Conc	Acid Type	Qty	Conc	%
Treatment Fld	Conc	Inhibitor	Conc	Sand Type	Size	Conc	Qty

Fluid Data									
Stage/Plug #: 1									
Fluid #	Stage Type	Fluid Name	Qty	Qty uom	Mixing Density lbm/gal	Yield ft ³ /sk	Mix Fluid Gal/sk	Rate bbl/min	Total Mix Fluid Gal/sk
1	Dye Spacer with PolyFlake		30.00	bbl	8.33	.0	.0	6	
2	Lead Cement	VERSACEM (TM) SYSTEM (452010)	155.0	sacks	12.3	2.38	13.75	6	13.41
	13.409 Gal	FRESH WATER							
3	Tail Cement	VERSACEM (TM) SYSTEM (452010)	165.0	sacks	12.8	2.11	11.75	6	11.45
	11.447 Gal	FRESH WATER							
4	Displacement		61.00	bbl	8.33	.0	.0	6	
Calculated Values		Pressures		Volumes					
Displacement	61	Shut In: Instant		Lost Returns	no	Cement Slurry	120	Pad	
Top Of Cement	surface	5 Min		Cement Returns	10	Actual Displacement	61	Treatment	
Frac Gradient		15 Min		Spacers	30	Load and Breakdown		Total Job	
Rates									
Circulating	rig	Mixing	6	Displacement	6	Avg. Job	6		
Cement Left In Pipe	Amount	49 ft	Reason	Shoe Joint					
Frac Ring # 1 @	ID	Frac ring # 2 @	ID	Frac Ring # 3 @	ID	Frac Ring # 4 @	ID		
The Information Stated Herein Is Correct				Customer Representative Signature					

The Road to Excellence Starts with Safety

Sold To #: 338668	Ship To #: 2666578	Quote #:	Sales Order #: 6237189
Customer: CHEVRON - MID-CONTINENT EBIZ	Customer Rep:		
Well Name: SKR	Well #: 598-25-CV-20	API/UWI #: 05-045-16242	
Field: SKINNER RIDGE	City (SAP): PARACHUTE	County/Parish: Garfield	State: Colorado
Legal Description:			
Lat: N 39.578 deg. OR N 39 deg. 34 min. 42.233 secs.		Long: W 108.341 deg. OR W -109 deg. 39 min. 31.417 secs.	
Contractor: CHEVRON	Rig/Platform Name/Num: H&P 316		
Job Purpose: Cement Surface Casing	Ticket Amount:		
Well Type: Development Well	Job Type: Cement Surface Casing		
Sales Person: HARTLEY, RICHARD	Srvc Supervisor: BROST, ROBERT	MBU ID Emp #: 394382	

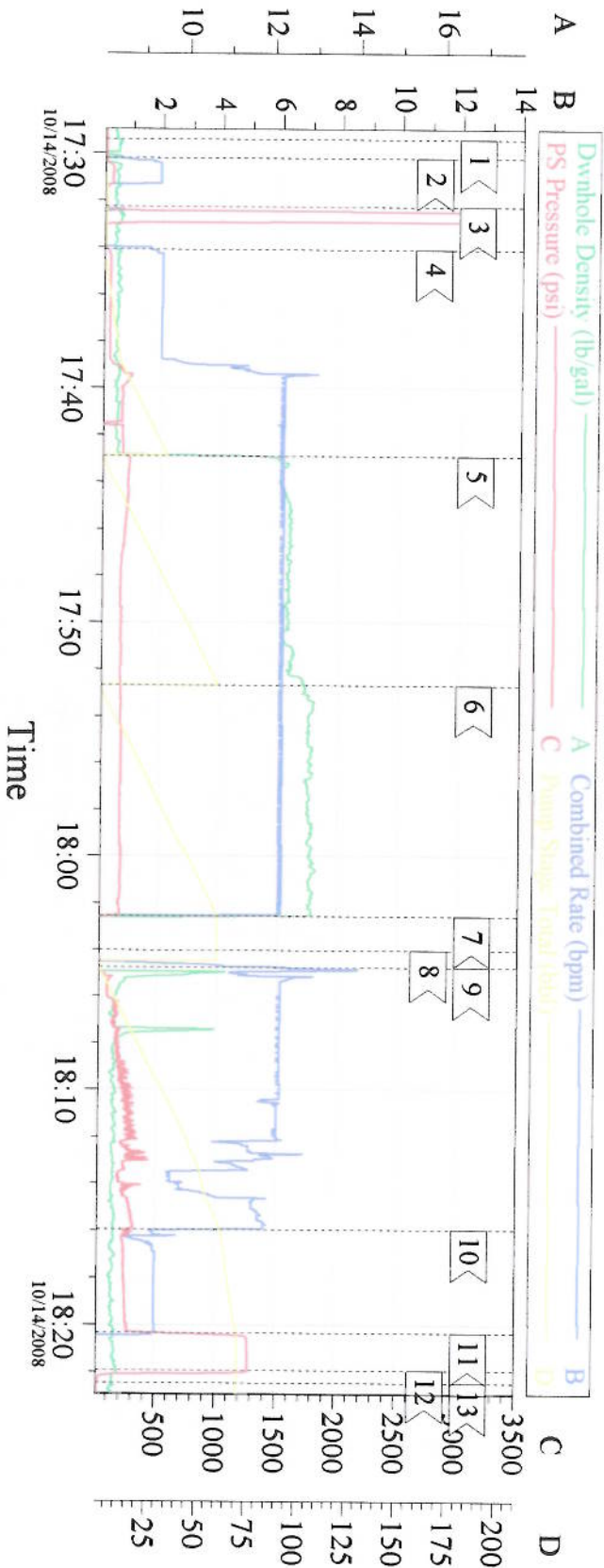
Activity Description	Date/Time	Cht #	Rate bbl/min	Volume bbl		Pressure psig		Comments
				Stage	Total	Tubing	Casing	
Call Out	10/14/2008 11:00							elite#11 8 5/8"surface 1045td 1002tp 49shoe 9.3ppg mud 12 1/4"hole off line cmt job
Safety Huddle	10/14/2008 11:30							no cell phones use seatbelts watch following distance
Arrive At Loc	10/14/2008 14:50							
Assessment Of Location Safety Meeting	10/14/2008 15:00							walk threw rig up looking for haz. small trench around rig
Rig-Up Equipment	10/14/2008 15:15							
Rig-Up Completed	10/14/2008 16:00							rig circ.for 1hr 45min
Safety Meeting - Pre Job	10/14/2008 17:10							attn by rig crew pump crew comp. rep.
Start Job	10/14/2008 17:25							fill lines fresh water
Pressure Test	10/14/2008 17:27						3200.0	good test no leaks
Pump Spacer 1	10/14/2008 17:29		6	30			170.0	fresh water with dye and poly flake in last 10 bls
Pump Lead Cement	10/14/2008 17:38		6	66			225.0	155sks 12.3ppg 2.38yield 13.75h2o
Pump Tail Cement	10/14/2008 17:49		6	62			182.0	165sks 12.8ppg 2.11yield 11.75h2o
Shutdown	10/14/2008 17:58							
Drop Top Plug	10/14/2008 17:59							plug left container
Pump Displacement	10/14/2008 18:00		6	61			305.0	fresh water slow last ten bls to bump

Cementing Job Log

Activity Description	Date/Time	Cht #	Rate bbl/ min	Volume bbl		Pressure psig		Comments
				Stage	Total	Tubing	Casing	
Bump Plug	10/14/2008 18:16						312.0	took 900 over
Check Floats	10/14/2008 18:17						1279.0	floats held
End Job	10/14/2008 18:18							good circulation during job 10 bls cmt to surface
Safety Meeting - Pre Rig- Down	10/14/2008 18:30							
Safety Meeting - Departing Location	10/14/2008 19:55							thank you Robert Brost

Chevron

8 5/8" surface



Event Log

1 <	start job	17:29:25	2 <	fill lines	17:30:13	3 <	test lines	17:32:16
4 <	pump spcr	17:34:04	5 <	pump lead cmt	17:42:53	6 <	pump tail cmt	17:52:41
7 <	shut down	18:02:34	8 <	drop plug	18:04:02	9 <	pump displacement	18:04:47
10 <	slow rate	18:15:58	11 <	bump plug	18:20:21	12 <	check floats	18:21:56
13 <	end job	18:22:27						

Customer: chevron	Job Date: 10/14/08	Ticket #: 6237189
Well Description: surface	CEMENTER Robert Brost	ADC USED YES
LEASE: SKR	WELL # 598-25-CV-20	CO REP ED Doherty

CemWin v1.7.2
14-Oct-08 18:59