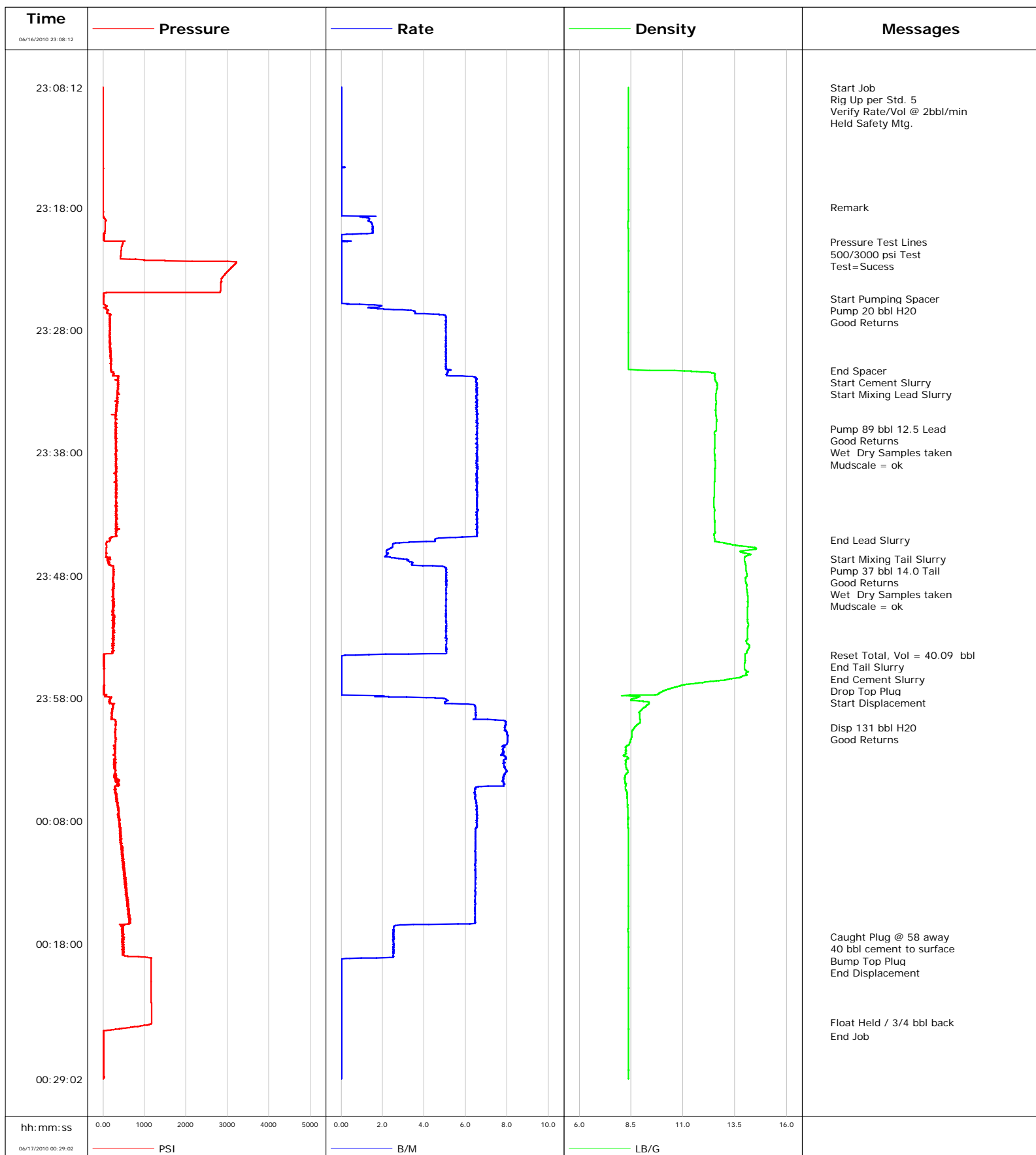


**Well** WF04D-22 K22 596  
**Field** N. Parachute  
**Engineer** B. Farnham  
**Country** United States

**Client** Encana  
**SIR No.** 347755  
**Job Type** 9 5/8" Surface  
**Job Date** 6/16/2010



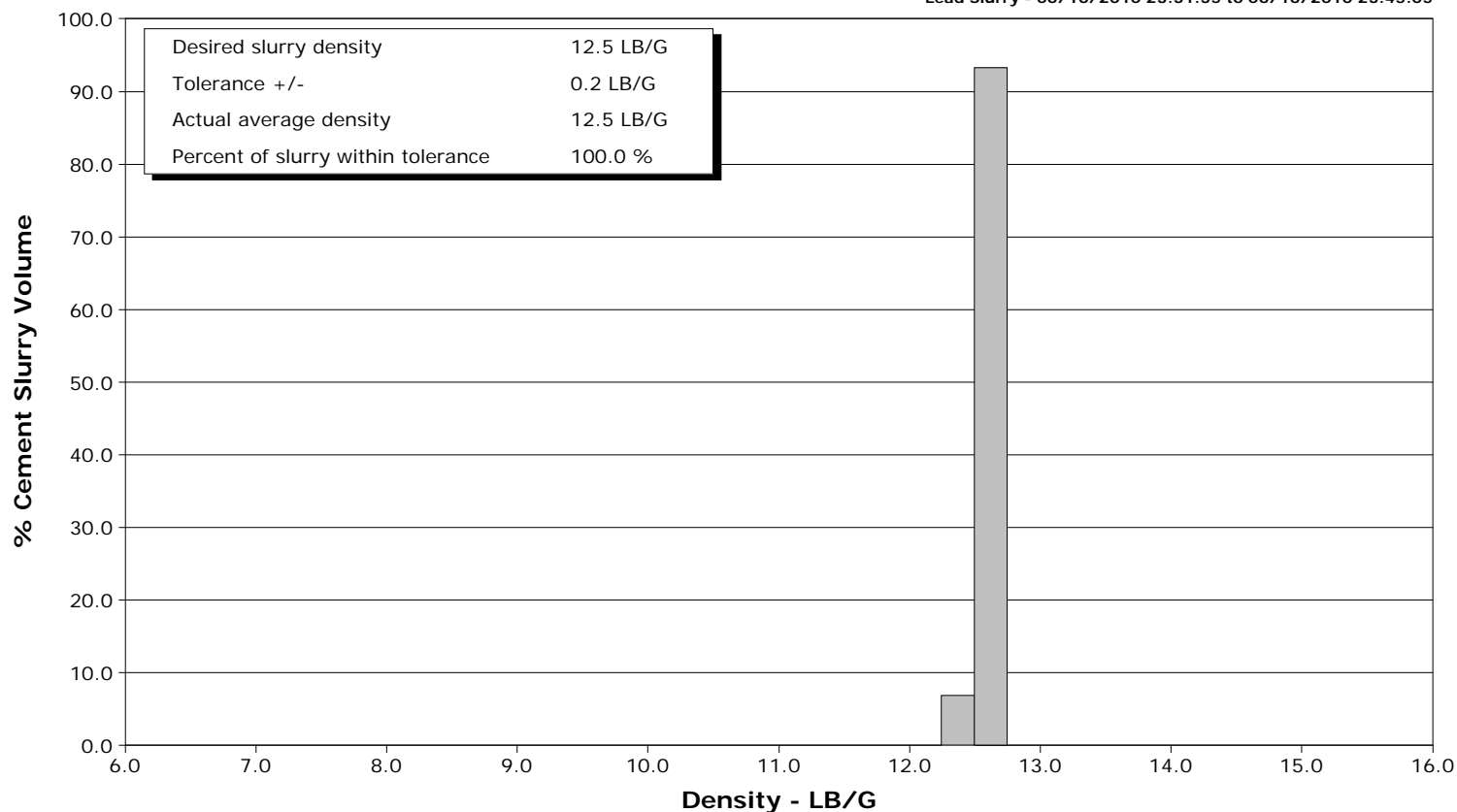
# Schlumberger

## Cementing Qa/Qc Density Report

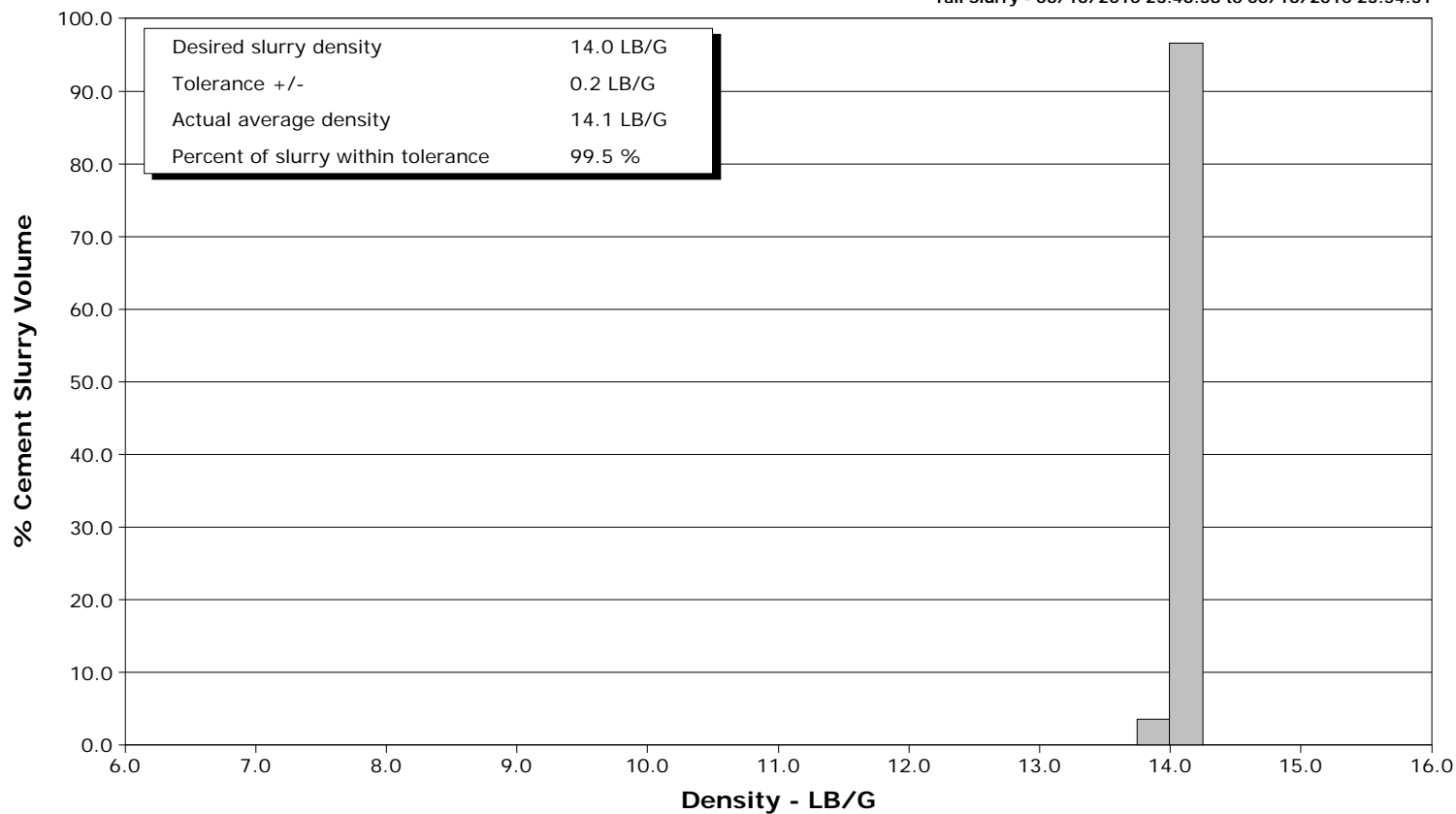
**Well** WF04D-22 K22 596  
**Field** N. Parachute  
**Engineer** B. Farnham  
**Country** United States

**Client** Encana  
**SIR No.** 347755  
**Job Type** 9 5/8" Surface  
**Job Date** 6/16/2010

Lead Slurry - 06/16/2010 23:31:35 to 06/16/2010 23:45:05



Tail Slurry - 06/16/2010 23:46:38 to 06/16/2010 23:54:31





Well WF04D-22 K22 596 WF04D-22 K22 596			Field N. Parachute	Job Start Jun/16/2010	Customer Encana	Job Number 347755
Date	Time 24-hr clock	Treating Pressure PSI	Flow Rate B/M	Density LB/G	Volume BBL	Message
06/16/2010	23:15:05	-0	0.0	8.37	0.0	
06/16/2010	23:15:35	-1	0.0	8.37	0.0	
06/16/2010	23:16:05	-1	0.0	8.37	0.0	
06/16/2010	23:16:35	-1	0.0	8.37	0.0	
06/16/2010	23:17:05	0	0.0	8.37	0.0	
06/16/2010	23:17:35	-0	0.0	8.37	0.0	
06/16/2010	23:17:59					Remark
06/16/2010	23:17:59	-1	0.0	8.37	0.0	
06/16/2010	23:18:05	-1	0.0	8.37	0.0	
06/16/2010	23:18:35	-0	0.0	8.37	0.0	
06/16/2010	23:19:05	77	1.3	8.36	0.5	
06/16/2010	23:19:35	56	1.5	8.35	1.2	
06/16/2010	23:20:05	43	1.5	8.36	2.0	
06/16/2010	23:20:35	18	0.0	8.36	2.1	
06/16/2010	23:20:49					Pressure Test Lines
06/16/2010	23:20:49	482	0.0	8.36	2.1	
06/16/2010	23:20:50					500/3000 psi Test
06/16/2010	23:20:50	484	0.0	8.36	2.1	
06/16/2010	23:20:51					Test=Sucess
06/16/2010	23:20:51	484	0.0	8.36	2.1	
06/16/2010	23:21:05	462	0.0	8.36	2.1	
06/16/2010	23:21:35	438	0.0	8.36	2.1	
06/16/2010	23:22:05	425	0.0	8.36	2.1	
06/16/2010	23:22:35	3195	0.0	8.36	2.1	
06/16/2010	23:23:05	3038	0.0	8.36	2.1	
06/16/2010	23:23:35	2911	0.0	8.36	2.1	
06/16/2010	23:24:05	2846	0.0	8.36	2.1	
06/16/2010	23:24:35	2837	0.0	8.36	2.1	
06/16/2010	23:25:05	1	0.0	8.36	2.1	
06/16/2010	23:25:24					Start Pumping Spacer
06/16/2010	23:25:24	11	0.0	8.36	2.1	
06/16/2010	23:25:25					Pump 20 bbl H2O
06/16/2010	23:25:25					Good Returns
06/16/2010	23:25:25	11	0.0	8.36	2.1	
06/16/2010	23:25:35	10	0.0	8.36	2.1	
06/16/2010	23:26:05	90	1.9	8.36	2.4	
06/16/2010	23:26:35	101	3.6	8.37	3.7	
06/16/2010	23:27:05	170	5.1	8.37	6.1	
06/16/2010	23:27:35	160	5.0	8.37	8.6	
06/16/2010	23:28:05	163	5.0	8.37	11.1	
06/16/2010	23:28:35	171	5.0	8.36	13.7	
06/16/2010	23:29:05	161	5.0	8.36	16.2	
06/16/2010	23:29:35	182	5.0	8.36	18.7	
06/16/2010	23:30:05	179	5.0	8.36	21.2	
06/16/2010	23:30:35	195	5.1	8.36	23.7	
06/16/2010	23:31:05	199	5.0	8.37	26.3	
06/16/2010	23:31:18					End Spacer
06/16/2010	23:31:18	191	5.2	10.01	27.4	
06/16/2010	23:31:27					Start Cement Slurry
06/16/2010	23:31:27	223	5.1	12.32	28.2	
06/16/2010	23:31:35					Start Mixing Lead Slurry
06/16/2010	23:31:35	249	5.1	12.54	28.8	
06/16/2010	23:32:05	294	6.5	12.56	31.8	
06/16/2010	23:32:35	359	6.5	12.65	35.1	

Well WF04D-22 K22 596 WF04D-22 K22 596			Field N. Parachute		Job Start Jun/16/2010		Customer Encana		Job Number 347755	
Date	Time 24-hr clock	Treating Pressure PSI	Flow Rate B/M	Density LB/G	Volume BBL	Message				
06/16/2010	23:33:35	334	6.5	12.59	41.6					
06/16/2010	23:34:05	320	6.5	12.59	44.9					
06/16/2010	23:34:35	325	6.5	12.57	48.2					
06/16/2010	23:35:05	304	6.5	12.60	51.4					
06/16/2010	23:35:35	318	6.5	12.61	54.7					
06/16/2010	23:36:02					Pump 89 bbl 12.5 Lead				
06/16/2010	23:36:02					Good Returns				
06/16/2010	23:36:02	316	6.6	12.60	57.7					
06/16/2010	23:36:03					Wet Dry Samples taken				
06/16/2010	23:36:03	316	6.5	12.60	57.8					
06/16/2010	23:36:05	302	6.6	12.60	58.0					
06/16/2010	23:36:26					Mudscale = ok				
06/16/2010	23:36:26	324	6.5	12.52	60.3					
06/16/2010	23:36:35	306	6.6	12.53	61.3					
06/16/2010	23:37:05	327	6.6	12.53	64.5					
06/16/2010	23:37:35	304	6.5	12.52	67.8					
06/16/2010	23:38:05	316	6.5	12.52	71.1					
06/16/2010	23:38:35	306	6.6	12.54	74.4					
06/16/2010	23:39:05	306	6.5	12.55	77.6					
06/16/2010	23:39:35	306	6.6	12.53	80.9					
06/16/2010	23:40:35	310	6.5	12.52	87.5					
06/16/2010	23:41:05	311	6.5	12.51	90.7					
06/16/2010	23:41:35	316	6.6	12.50	94.0					
06/16/2010	23:42:05	337	6.5	12.48	97.3					
06/16/2010	23:42:35	316	6.5	12.52	100.5					
06/16/2010	23:43:05	308	6.5	12.52	103.8					
06/16/2010	23:43:35	326	6.5	12.52	107.1					
06/16/2010	23:44:05	306	6.6	12.54	110.4					
06/16/2010	23:44:35	314	6.6	12.53	113.6					
06/16/2010	23:45:05					End Lead Slurry				
06/16/2010	23:45:05	170	4.5	12.54	116.5					
06/16/2010	23:45:35	90	2.5	13.73	118.2					
06/16/2010	23:46:05	80	2.2	13.77	119.4					
06/16/2010	23:46:35	146	2.7	13.97	120.5					
06/16/2010	23:46:38					Start Mixing Tail Slurry				
06/16/2010	23:46:38	101	2.8	13.97	120.6					
06/16/2010	23:47:05	146	3.4	14.02	122.1					
06/16/2010	23:47:13					Pump 37 bbl 14.0 Tail				
06/16/2010	23:47:13					Good Returns				
06/16/2010	23:47:13	249	4.4	14.03	122.6					
06/16/2010	23:47:14					Wet Dry Samples taken				
06/16/2010	23:47:14	252	4.7	14.03	122.7					
06/16/2010	23:47:35	255	5.1	14.04	124.4					
06/16/2010	23:48:04					Mudscale = ok				
06/16/2010	23:48:04	249	5.0	14.07	126.9					
06/16/2010	23:48:05	247	5.0	14.07	126.9					
06/16/2010	23:48:35	241	5.1	14.03	129.5					
06/16/2010	23:49:05	237	5.0	14.07	132.0					
06/16/2010	23:49:35	255	5.1	14.11	134.5					
06/16/2010	23:50:05	221	5.1	14.12	137.1					
06/16/2010	23:50:35	250	5.0	14.12	139.6					
06/16/2010	23:51:05	243	5.0	14.11	142.1					
06/16/2010	23:51:35	248	5.1	14.12	144.7					
06/16/2010	23:52:05	260	5.1	14.15	147.2					

Well WF04D-22 K22 596 WF04D-22 K22 596			Field N. Parachute		Job Start Jun/16/2010		Customer Encana		Job Number 347755	
Date	Time 24-hr clock	Treating Pressure PSI	Flow Rate B/M	Density LB/G	Volume BBL	Message				
06/16/2010	23:53:05	273	5.0	14.12	152.3					
06/16/2010	23:53:35	223	5.1	14.11	154.8					
06/16/2010	23:54:05	227	5.1	14.12	157.3					
06/16/2010	23:54:29					Reset Total, Vol = 40.09 bbl				
06/16/2010	23:54:29	17	0.7	13.99	159.1					
06/16/2010	23:54:31					End Tail Slurry				
06/16/2010	23:54:31	17	0.2	13.99	159.1					
06/16/2010	23:54:32					End Cement Slurry				
06/16/2010	23:54:32	17	0.2	13.99	159.1					
06/16/2010	23:54:33					Drop Top Plug				
06/16/2010	23:54:33	16	0.1	13.99	159.1					
06/16/2010	23:54:35					Start Displacement				
06/16/2010	23:54:35	16	0.0	13.99	159.1					
06/16/2010	23:55:05	12	0.0	13.98	159.1					
06/16/2010	23:55:35	24	0.0	13.97	159.1					
06/16/2010	23:56:05	27	0.0	14.06	159.1					
06/16/2010	23:56:35	27	0.0	12.73	159.1					
06/16/2010	23:57:05	14	0.0	10.68	159.1					
06/16/2010	23:57:35	23	0.0	9.87	159.1					
06/16/2010	23:58:05	169	5.0	8.55	160.1					
06/16/2010	23:58:35	234	6.4	9.26	162.8					
06/16/2010	23:59:05	229	6.5	8.94	166.0					
06/16/2010	23:59:35	218	6.5	8.92	169.3					
06/17/2010	00:00:05	302	8.0	8.86	173.0					
06/17/2010	00:00:23					Disp 131 bbl H2O				
06/17/2010	00:00:23					Good Returns				
06/17/2010	00:00:23	301	7.9	8.67	175.3					
06/17/2010	00:00:35	306	7.9	8.59	176.9					
06/17/2010	00:01:05	287	8.0	8.53	180.9					
06/17/2010	00:01:35	304	8.0	8.45	184.9					
06/17/2010	00:02:05	270	7.8	8.25	188.9					
06/17/2010	00:02:35	291	7.7	8.24	192.8					
06/17/2010	00:03:05	284	7.8	8.22	196.7					
06/17/2010	00:03:35	300	7.9	8.25	200.6					
06/17/2010	00:04:05	293	7.9	8.33	204.6					
06/17/2010	00:04:35	276	7.8	8.18	208.5					
06/17/2010	00:05:05	401	7.8	8.24	212.4					
06/17/2010	00:05:35	299	6.4	8.28	215.8					
06/17/2010	00:06:05	317	6.4	8.31	219.0					
06/17/2010	00:06:35	366	6.5	8.32	222.3					
06/17/2010	00:07:05	371	6.5	8.34	225.5					
06/17/2010	00:07:35	366	6.5	8.36	228.8					
06/17/2010	00:08:05	403	6.5	8.36	232.1					
06/17/2010	00:08:35	430	6.5	8.36	235.3					
06/17/2010	00:09:05	437	6.5	8.36	238.6					
06/17/2010	00:09:35	423	6.5	8.36	241.8					
06/17/2010	00:10:05	467	6.5	8.36	245.1					
06/17/2010	00:10:35	467	6.5	8.36	248.3					
06/17/2010	00:11:05	489	6.5	8.36	251.5					
06/17/2010	00:11:35	484	6.5	8.37	254.8					
06/17/2010	00:12:05	526	6.5	8.36	258.0					
06/17/2010	00:12:35	520	6.5	8.36	261.2					
06/17/2010	00:13:05	543	6.5	8.36	264.5					
06/17/2010	00:13:35	583	6.5	8.36	267.7					

Well WF04D-22 K22 596 WF04D-22 K22 596			Field N. Parachute	Job Start Jun/16/2010	Customer Encana	Job Number 347755
Date	Time 24-hr clock	Treating Pressure PSI	Flow Rate B/M	Density LB/G	Volume BBL	Message
06/17/2010	00:14:35	599	6.5	8.36	274.2	
06/17/2010	00:15:05	599	6.5	8.36	277.4	
06/17/2010	00:15:35	627	6.5	8.36	280.6	
06/17/2010	00:16:05	656	6.5	8.36	283.9	
06/17/2010	00:16:35	500	2.6	8.36	286.5	
06/17/2010	00:17:05	474	2.5	8.36	287.8	
06/17/2010	00:17:27					Caught Plug @ 58 away
06/17/2010	00:17:27	485	2.5	8.36	288.7	
06/17/2010	00:17:28					40 bbl cement to surface
06/17/2010	00:17:28	485	2.5	8.36	288.8	
06/17/2010	00:17:35	499	2.5	8.36	289.1	
06/17/2010	00:18:05	481	2.5	8.36	290.3	
06/17/2010	00:18:35	473	2.5	8.36	291.6	
06/17/2010	00:19:05	852	2.5	8.37	292.9	
06/17/2010	00:19:24					Bump Top Plug
06/17/2010	00:19:24	1163	0.0	8.37	293.1	
06/17/2010	00:19:25					End Displacement
06/17/2010	00:19:25	1163	0.0	8.37	293.1	
06/17/2010	00:19:35	1163	0.0	8.37	293.1	
06/17/2010	00:20:05	1162	0.0	8.37	293.1	
06/17/2010	00:20:35	1162	0.0	8.37	293.1	
06/17/2010	00:21:05	1163	0.0	8.37	293.1	
06/17/2010	00:21:35	1164	0.0	8.37	293.1	
06/17/2010	00:22:05	1165	0.0	8.37	293.1	
06/17/2010	00:22:35	1166	0.0	8.37	293.1	
06/17/2010	00:23:05	1167	0.0	8.37	293.1	
06/17/2010	00:23:35	1168	0.0	8.37	293.1	
06/17/2010	00:24:05	1169	0.0	8.37	293.1	
06/17/2010	00:24:25					Float Held / 3/4 bbl back
06/17/2010	00:24:25	1170	0.0	8.37	293.1	
06/17/2010	00:24:35	1136	0.0	8.37	293.1	
06/17/2010	00:25:05	123	0.0	8.37	293.1	
06/17/2010	00:25:33					End Job
06/17/2010	00:25:33	3	0.0	8.37	293.1	
06/17/2010	00:25:35	3	0.0	8.37	293.1	
06/17/2010	00:26:05	3	0.0	8.37	293.1	
06/17/2010	00:26:35	3	0.0	8.37	293.1	
06/17/2010	00:27:05	3	0.0	8.37	293.1	
06/17/2010	00:27:35	2	0.0	8.37	293.1	
06/17/2010	00:28:05	1	0.0	8.37	293.1	

Well WF04D-22 K22 596 WF04D-22 K22 596	Field N. Parachute	Job Start Jun/16/2010	Customer Encana	Job Number 347755
---	-----------------------	--------------------------	--------------------	----------------------

Post Job Summary

Average Pump Rates, bbl/min					Volume of Fluid Injected, bbl			
Slurry 5.0	N2	Mud 0.0	Maximum Rate 8.0	Total Slurry 126.0	Mud 0.0	Spacer 20.0	N2	
Treating Pressure Summary, psi					Breakdown Fluid			
Maximum 3000	Final 1165	Average 350	Bump Plug to 1165	Breakdown	Type FreshWater	Volume 325.0 bbl	Density 8.34 lb/gal	
Avg. N2 Percent	Designed Slurry Volume 126.0 bbl		Displacement 131.0 bbl		Mix Water Temp 70 degF	Cement Circulated to Surface? <input checked="" type="checkbox"/>	Volume 40.0 bbl	
Customer or Authorized Representative Steve Record			Schlumberger Supervisor B. Farnham			Washed Thru Perfs <input type="checkbox"/>	To	
						Circulation Lost <input checked="" type="checkbox"/>	Job Completed <input checked="" type="checkbox"/>	
						-	-	