
CHEVRON - MID-CONTINENT EBIZ

**SKR 598-25-CV-15
SKINNER RIDGE
Garfield County , Colorado**

Cement Production Casing
18-Sep-2008

Job Site Documents

The Road to Excellence Starts with Safety

Sold To #: 338668	Ship To #: 2666568	Quote #:	Sales Order #: 6178150
Customer: CHEVRON - MID-CONTINENT EBIZ		Customer Rep: Darryll, Ed	
Well Name: SKR		Well #: 598-25-CV-15	API/UWI #: 05-045-16248
Field: SKINNER RIDGE	City (SAP): PARACHUTE	County/Parish: Garfield	State: Colorado
Lat: N 39.578 deg. OR N 39 deg. 34 min. 42.067 secs.		Long: W 108.341 deg. OR W -109 deg. 39 min. 31.489 secs.	
Contractor: H&P 316		Rig/Platform Name/Num: H&P 316	
Job Purpose: Cement Production Casing			
Well Type: Development Well		Job Type: Cement Production Casing	
Sales Person: DUNNING, DUSTIN		Srvc Supervisor: HONE, AARON	MBU ID Emp #: 381285

Job Personnel

HES Emp Name	Exp Hrs	Emp #	HES Emp Name	Exp Hrs	Emp #	HES Emp Name	Exp Hrs	Emp #
BORSZICH, STEPHEN A	15	412388	HONE, AARON D	15	381285	JENSON, SHANE	15	441759
JOHNSTON, JAMES Arthur	15	433881						

Equipment

HES Unit #	Distance-1 way	HES Unit #	Distance-1 way	HES Unit #	Distance-1 way	HES Unit #	Distance-1 way
10567589C	120 mile	10829467	120 mile	10867423	120 mile	10897887	120 mile
10995027	120 mile						

Job Hours

Date	On Location Hours	Operating Hours	Date	On Location Hours	Operating Hours	Date	On Location Hours	Operating Hours
9/17/08	3	1.5	9/18/08	12	3.5			
TOTAL								

Total is the sum of each column separately

Job

Formation Name	Formation Depth (MD)	Top	Bottom	Form Type	Job depth MD	Job Depth TVD	Water Depth	Perforation Depth (MD)	From	To	Job Times	Date	Time	Time Zone
				BHST	6500. ft	6500. ft	Wk Ht Above Floor	4. ft			Called Out	17 - Sep - 2008	18:00	MST
											On Location	17 - Sep - 2008	21:00	MST
											Job Started	18 - Sep - 2008	07:24	MST
											Job Completed	18 - Sep - 2008	08:55	MST
											Departed Loc	18 - Sep - 2008	12:00	MST

Well Data

Description	New / Used	Max pressure psig	Size in	ID in	Weight lbm/ft	Thread	Grade	Top MD ft	Bottom MD ft	Top TVD ft	Bottom TVD ft
Open Hole				7.875					6500		6500
Production Casing	Unknown		4.5	4.	11.6				6478		6478

Sales/Rental/3rd Party (HES)

Description	Qty	Qty uom	Depth	Supplier
PLUG,CMTG,TOP,4 1/2,HWE,3.65 MIN/4.14 MA	1	EA		

Tools and Accessories

Type	Size	Qty	Make	Depth	Type	Size	Qty	Make	Depth	Type	Size	Qty	Make
Guide Shoe					Packer					Top Plug	4.5	1	
Float Shoe					Bridge Plug					Bottom Plug			
Float Collar					Retainer					SSR plug set			
Insert Float										Plug Container	4.5	1	
Stage Tool										Centralizers			

Miscellaneous Materials

Gelling Agt	Conc	Surfactant	Conc	Acid Type	Qty	Conc	%
Treatment Fld	Conc	Inhibitor	Conc	Sand Type	Size	Qty	

HALLIBURTON**Cementing Job Summary**

Fluid Data									
Stage/Plug #: 1									
Fluid #	Stage Type	Fluid Name	Qty	Qty uom	Mixing Density lbm/gal	Yield ft ³ /sk	Mix Fluid Gal/sk	Rate bbl/min	Total Mix Fluid Gal/sk
1	Dyed Spacer		50.00	bbl	8.33	.0	.0	.0	
2	Lead Cement	VARICEM (TM) CEMENT (452009)	402.0	sacks	12.8	1.55	7.15		
3	Tail Cement	VARICEM (TM) CEMENT (452009)	640.0	sacks	13.2	1.43	6.19		
4	KCL Displacement		99.7	bbl	.	.0	.0	.0	
Calculated Values		Pressures		Volumes					
Displacement	99.77	Shut In: Instant		Lost Returns	0	Cement Slurry		Pad	
Top Of Cement		5 Min		Cement Returns	0	Actual Displacement	99	Treatment	
Frac Gradient		15 Min		Spacers	50	Load and Breakdown		Total Job	
Rates									
Circulating	8	Mixing		7	Displacement	8	Avg. Job	7.5	
Cement Left In Pipe	Amount	41 ft	Reason	Shoe Joint					
Frac Ring # 1 @	ID	Frac ring # 2 @	ID	Frac Ring # 3 @	ID	Frac Ring # 4 @	ID		
The Information Stated Herein Is Correct				Customer Representative Signature					

The Road to Excellence Starts with Safety

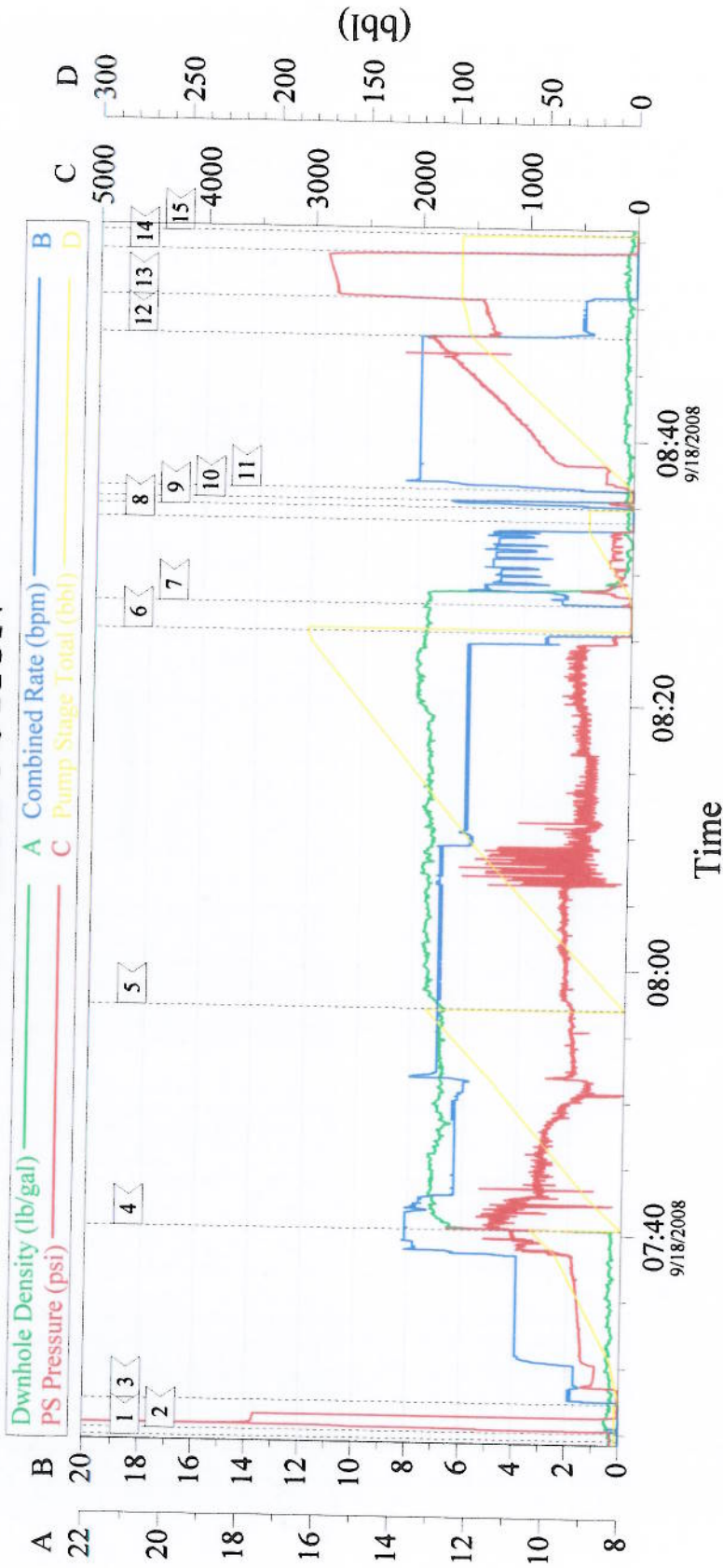
Sold To #: 338668	Ship To #: 2666568	Quote #:	Sales Order #: 6178150
Customer: CHEVRON - MID-CONTINENT EBIZ		Customer Rep: Darryll, Ed	
Well Name: SKR	Well #: 598-25-CV-15	API/UWI #: 05-045-16248	
Field: SKINNER RIDGE	City (SAP): PARACHUTE	County/Parish: Garfield	State: Colorado
Legal Description:			
Lat: N 39.578 deg. OR N 39 deg. 34 min. 42.067 secs.		Long: W 108.341 deg. OR W -109 deg. 39 min. 31.489 secs.	
Contractor: H&P 316		Rig/Platform Name/Num: H&P 316	
Job Purpose: Cement Production Casing		Ticket Amount:	
Well Type: Development Well		Job Type: Cement Production Casing	
Sales Person: DUNNING, DUSTIN		Srv Supervisor: HONE, AARON	
		MBU ID Emp #: 381285	

Activity Description	Date/Time	Cht #	Rate bbl/min	Volume bbl		Pressure psig		Comments
				Stage	Total	Tubing	Casing	
Call Out	09/17/2008 18:00							
Pre-Convoy Safety Meeting	09/17/2008 19:50							
Crew Leave Yard	09/17/2008 20:00							
Arrive At Loc	09/17/2008 21:00							RIG RUNNING CASING.
Assessment Of Location Safety Meeting	09/17/2008 21:10							
Pre-Rig Up Safety Meeting	09/17/2008 21:15							
Rig-Up Equipment	09/17/2008 21:20							AT 00:46 COMPANY REP INFORMED US THAT TOP DRIVE BROKE DOWN, WAITING ON ELECTRICIAN.
Pre-Job Safety Meeting	09/18/2008 07:00							PLUG CONTAINER INSPECTED BY COMPANY REP. STAR ZIP TIED.
Start Job	09/18/2008 07:24							HOLE- 7 7/8" TD- 6500' SURFACE- 8 5/8" 24# SET TO 1285' CSG- 4 1/2" 11.6# N- 80 TP- 6478' SJ- 41' MUD-10.1#
Test Lines	09/18/2008 07:25							5000 PSI.
Pump Spacer	09/18/2008 07:27		8		50		1200.0	H2O, DYE, POLE-FLAKE
Pump Lead Cement	09/18/2008 07:40		7		111		1300.0	402 SKS. 12.8, 1.55, 7.15.
Pump Tail Cement	09/18/2008 07:57		7		163		582.0	640 SKS, 13.2, 1.43, 6.19

Cementing Job Log

Activity Description	Date/Time	Cht #	Rate bbl/ min	Volume bbl		Pressure psig		Comments
				Stage	Total	Tubing	Casing	
Shutdown	09/18/2008 08:25							
Clean Lines	09/18/2008 08:27		6		30			H2O, 20# SUGAR PER COMPANY REPS REQUEST.
Drop Top Plug	09/18/2008 08:33							
Pump Displacement	09/18/2008 08:34		8		99.8		1904. 0	H2O, KCL. SHUT DOWN AND KNOCKED OFF CAP TO VERIFY PLUG LEFT CONTAINER.
Slow Rate	09/18/2008 08:47		2		90		1320. 0	
Bump Plug	09/18/2008 08:50		2		99.8		1600. 0	HELD TO 2800 PSI. WATER SPACER BACK.
Check Floats	09/18/2008 08:54							FLOATS HELD. 1 BBL BACK TO TRUCK.
End Job	09/18/2008 08:55							GOOD RETURNS THROUGHOUT JOB.
Pre-Rig Down Safety Meeting	09/18/2008 09:10							
Rig-Down Equipment	09/18/2008 09:20							
Pre-Convoy Safety Meeting	09/18/2008 11:50							
Crew Leave Location	09/18/2008 12:00							

4 1/2" PRODUCTION



Event Log

1	START JOB	07:24:31	2	TEST LINES	07:25:03	3	PUMP SPACER	07:27:17
4	PUMP LEAD CEMENT	07:40:18	5	PUMP TAIL CEMENT	07:57:01	6	SHUT DOWN	08:25:28
7	CLEAN LINES	08:27:33	8	DROP TOP PLUG	08:33:53	9	START DISPLACEMENT	08:34:54
10	SHUT DOWN	08:35:27	11	PUMP DISPLACEMENT	08:36:15	12	SLOW RATE	08:47:46
13	BUMP PLUG	08:50:36	14	CHECK FLOATS	08:54:02	15	END JOB	08:55:27

Customer:	CHEVRON	Job Date:	9/18/08	Ticket #:	6178150
Well Number:	SKR 598-25-CV-15	Job Type:	PRODUCTION	ADC Used:	Yes
Supervisor:	AARON HONE	Company Rep.:	ED DARRYLL	Operator:	STEPHEN BORSZICH