

HALLIBURTON

**CHEVRON - MID-CONTINENT EBIZ
11111 S WILCREST DR - DO NOT MAIL
HOUSTON, Texas**

SKR
SKR 598-25-CV-15

CHEVRON/H&P/316

Post Job Summary

Cement Surface Casing

Prepared for: ED DOHERTY
Date Prepared: 8-31-08
Version: 1

Service Supervisor: GASAWAY, SCOTT

Submitted by:

HALLIBURTON

The Road to Excellence Starts with Safety

| | | | |
|--|---------------------------------|-------------------------|------------------------|
| Sold To #: 338668 | Ship To #: 2666568 | Quote #: | Sales Order #: 6138430 |
| Customer: CHEVRON - MID-CONTINENT EBIZ | Customer Rep: DOHERTY, ED | | |
| Well Name: SKR | Well #: 598-25-CV-15 | API/UWI #: | |
| Field: PICEANCE | City (SAP): PARACHUTE | County/Parish: Garfield | State: Colorado |
| Contractor: CHEVRON | Rig/Platform Name/Num: H&P 316 | | |
| Job Purpose: Cement Surface Casing | | | |
| Well Type: Development Well | Job Type: Cement Surface Casing | | |
| Sales Person: HARTLEY, RICHARD | Srv Supervisor: GASAWAY, SCOTT | MBU ID Emp #: 246149 | |

Job Personnel

| HES Emp Name | Exp Hrs | Emp # | HES Emp Name | Exp Hrs | Emp # | HES Emp Name | Exp Hrs | Emp # |
|---------------------|---------|--------|----------------------|---------|--------|--------------------|---------|--------|
| CHASE, BRAD Waddell | 4 | 422281 | GASAWAY, SCOTT Eldon | 4 | 246149 | GUSTIN, CODY Blake | 4 | 386652 |
| WHITE, GENE L | 4 | 445480 | | | | | | |

Equipment

| HES Unit # | Distance-1 way | HES Unit # | Distance-1 way | HES Unit # | Distance-1 way | HES Unit # | Distance-1 way |
|------------|----------------|------------|----------------|------------|----------------|------------|----------------|
| 10296152C | 120 mile | 10886087 | 120 mile | 10897797 | 120 mile | 10951249 | 120 mile |
| 6345 | 120 mile | | | | | | |

Job Hours

| Date | On Location Hours | Operating Hours | Date | On Location Hours | Operating Hours | Date | On Location Hours | Operating Hours |
|---------|-------------------|-----------------|------|-------------------|-----------------|------|-------------------|-----------------|
| 8-31-08 | 4 | 1 | | | | | | |

TOTAL Total is the sum of each column separately

Job

Job Times

| Formation Name | | | | | | | | | | Job Times | | | | |
|------------------------|--|----------|--|--|-------------------|--|----------|--------------|---------------|-----------------|-------|-----------|--|--|
| Formation Depth (MD) | | Top | | | Bottom | | | Called Out | | Date | Time | Time Zone | | |
| Form Type | | | | | BHST | | | | On Location | 31 - Aug - 2008 | 20:00 | MST | | |
| Job depth MD | | 1260. ft | | | Job Depth TVD | | 1260. ft | | Job Started | 31 - Aug - 2008 | 22:49 | MST | | |
| Water Depth | | | | | Wk Ht Above Floor | | . ft | | Job Completed | 01 - Sep - 2008 | 00:05 | MST | | |
| Perforation Depth (MD) | | From | | | To | | | Departed Loc | | 01 - Sep - 2008 | 00:00 | MST | | |

Well Data

| Description | New / Used | Max pressure psig | Size in | ID in | Weight lbm/ft | Thread | Grade | Top MD ft | Bottom MD ft | Top TVD ft | Bottom TVD ft |
|-------------|------------|-------------------|---------|-------|---------------|--------|-------|-----------|--------------|------------|---------------|
|-------------|------------|-------------------|---------|-------|---------------|--------|-------|-----------|--------------|------------|---------------|

Sales/Rental/3rd Party (HES)

| Description | Qty | Qty uom | Depth | Supplier |
|--|-----|---------|-------|----------|
| PLUG,CMTG,TOP,8 5/8,HWE,7.20 MIN/8.09 MA | 1 | EA | | |

Tools and Accessories

| Type | Size | Qty | Make | Depth | Type | Size | Qty | Make | Depth | Type | Size | Qty | Make |
|--------------|------|-----|------|-------|-------------|------|-----|------|-------|----------------|-------|-----|------|
| Guide Shoe | | | | | Packer | | | | | Top Plug | 8 5/8 | 1 | |
| Float Shoe | | | | | Bridge Plug | | | | | Bottom Plug | | | |
| Float Collar | | | | | Retainer | | | | | SSR plug set | | | |
| Insert Float | | | | | | | | | | Plug Container | 8 5/8 | 1 | |
| Stage Tool | | | | | | | | | | Centralizers | | | |

Miscellaneous Materials

| Gelling Agt | Conc | Surfactant | Conc | Acid Type | Qty | Conc | % |
|---------------|------|------------|------|-----------|------|------|---|
| Treatment Fld | Conc | Inhibitor | Conc | Sand Type | Size | Qty | |

Fluid Data

| Stage/Plug #: 1 | Fluid # | Stage Type | Fluid Name | Qty | Qty uom | Mixing Density lbm/gal | Yield ft ³ /sk | Mix Fluid Gal/sk | Rate bbl/min | Total Mix Fluid Gal/sk |
|-----------------|---------|------------|------------|-----|---------|------------------------|---------------------------|------------------|--------------|------------------------|
|-----------------|---------|------------|------------|-----|---------|------------------------|---------------------------|------------------|--------------|------------------------|

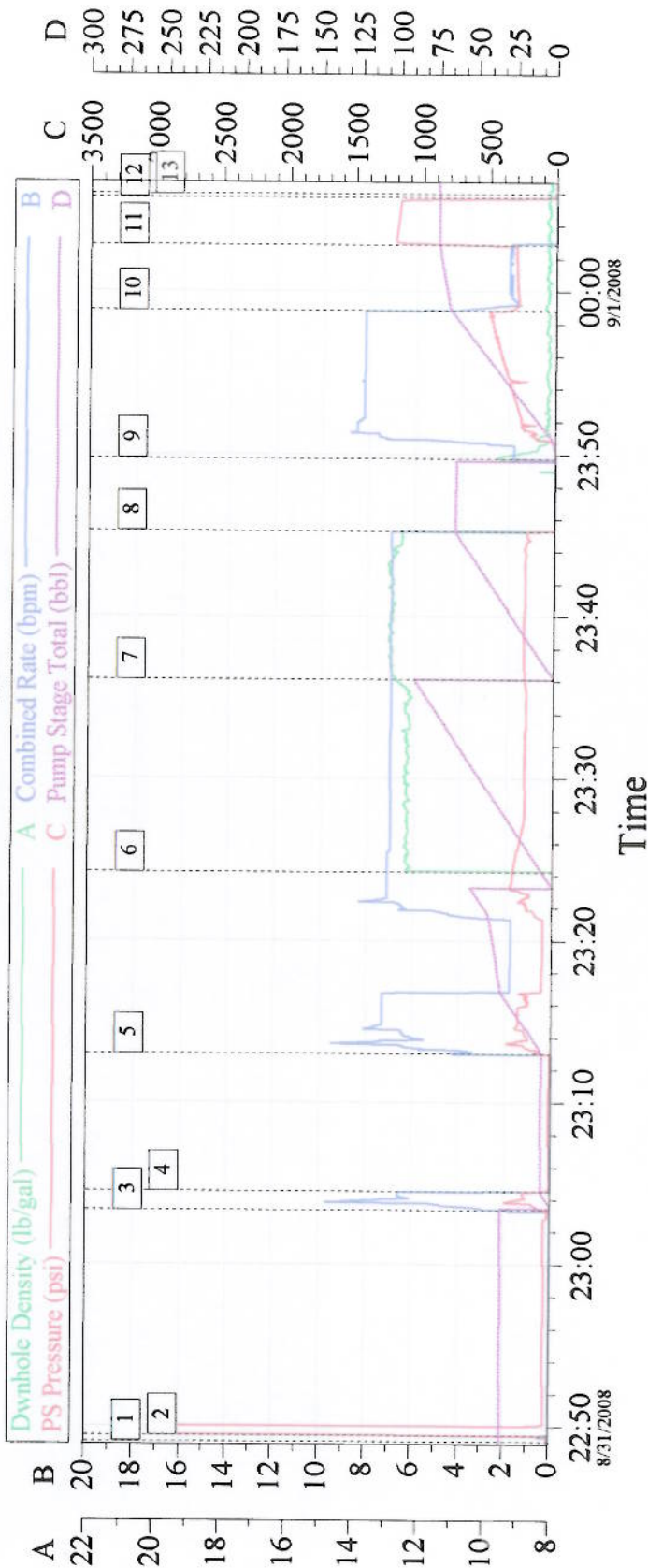
HALLIBURTON**Cementing Job Summary**

| Stage/Plug #: 1 | | | | | | | | | | |
|--|------------------|-------------------------------|--------|-----------------------------------|------------------------|---------------------------|------------------|--------------|------------------------|--|
| Fluid # | Stage Type | Fluid Name | Qty | Qty uom | Mixing Density lbm/gal | Yield ft ³ /sk | Mix Fluid Gal/sk | Rate bbl/min | Total Mix Fluid Gal/sk | |
| 1 | H2O SPACER | | 50.00 | bbl | . | .0 | .0 | 7.0 | | |
| 2 | VersaCem | VERSACEM (TM) SYSTEM (452010) | 235.0 | sacks | 12.3 | 2.38 | 13.75 | 7.0 | | |
| | 0.432 Gal | FRESH WATER | | | | | | | | |
| 3 | VersaCem Tail | VERSACEM (TM) SYSTEM (452010) | 165.0 | sacks | 12.8 | 2.11 | 11.75 | 7.0 | 11.75 | |
| | 0.347 Gal | FRESH WATER | | | | | | | | |
| 4 | H2O DISPLACEMENT | | 77.00 | bbl | 8.33 | .0 | .0 | 8.0 | | |
| Calculated Values | | Pressures | | Volumes | | | | | | |
| Displacement | 77.4 | Shut In: Instant | | Lost Returns | NO | Cement Slurry | 161.2 | Pad | | |
| Top Of Cement | SURFACE | 5 Min | | Cement Returns | 37 | Actual Displacement | 77.4 | Treatment | | |
| Frac Gradient | | 15 Min | | Spacers | 50 | Load and Breakdown | | Total Job | 289 | |
| Rates | | | | | | | | | | |
| Circulating | RIG | Mixing | 7 | Displacement | 8 | Avg. Job | 7 | | | |
| Cement Left In Pipe | Amount | 42 ft | Reason | Shoe Joint | | | | | | |
| Frac Ring # 1 @ | ID | Frac ring # 2 @ | ID | Frac Ring # 3 @ | ID | Frac Ring # 4 @ | ID | | | |
| The Information Stated Herein Is Correct | | | | Customer Representative Signature | | | | | | |

Cementing Job Log

| Activity Description | Date/Time | Cht # | Rate bbl/ min | Volume bbl | | Pressure psig | | Comments |
|---|---------------------|----------|---------------------|---------------|-------|------------------|--------|---|
| | | | | Stage | Total | Tubing | Casing | |
| Pump Tail Cement | 08/31/2008 23:36 | | 7 | 62 | | | 225.0 | 12.8 PPG, 165 SKS, 2.11 YIELD, 11.75 GAL/SK |
| Shutdown | 08/31/2008 23:45 | | | | | | | |
| Drop Top Plug | 08/31/2008 23:46 | | | | | | | AWAY, CO-MAN VERIFIED PLUG WENT |
| Pump Displacement | 08/31/2008 23:49 | | 8 | | | | 200.0 | H2O |
| Slow Rate | 08/31/2008 23:58 | | 2 | 67 | | | 277.0 | |
| Bump Plug | 09/01/2008 00:02 | | 2 | 77.4 | | | 300.0 | PRESSURED UP TO 1250 PSI, 1000 PSI OVER PER CO-MAN |
| Check Floats | 09/01/2008 00:05 | | | | | | | HOLDING, .5 BBL BACK |
| Post-Job Safety Meeting (Pre Rig-Down) | 09/01/2008 00:15 | | | | | | | |
| Rig-Down Equipment | 09/01/2008 00:30 | | | | | | | |
| Rig-Down Completed | 09/01/2008 01:30 | | | | | | | |
| Safety Meeting - Departing Location | 09/01/2008 01:45 | | | | | | | |
| Crew Leave Location | 09/01/2008 02:00 | | | | | | | |
| Comment | 09/01/2008 03:00 | | | | | | | OFF LINE JOB, GOOD RETURNS WHILE PUMPING, 37 BBLs OF CEMENT TO SURFACE, |
| Comment | 09/01/2008 03:00 | | | | | | | THANKS FROM SCOTT GASAWAY AND CREW |
| End Job | 10/01/2008 00:05 | | | | | | | |

8 5/8 SURFACE



| Event Log | | | | | |
|-----------|-----------------------|--------------------|----|-------------------------|--------------------|
| 1 | START JOB | 8/31/2008 22:49:06 | 2 | TEST LINES | 8/31/2008 22:49:28 |
| 3 | PUMP H2O SPACER | 8/31/2008 23:03:20 | 4 | SHUT DOWN | 8/31/2008 23:04:30 |
| 5 | PUMP H2O SPACER | 8/31/2008 23:12:59 | 6 | PUMP LEAD CEMENT | 8/31/2008 23:24:13 |
| 7 | PUMP TAIL CEMENT | 8/31/2008 23:36:06 | 8 | SHUT DOWN/DROP TOP PLUG | 8/31/2008 23:45:16 |
| 9 | PUMP H2O DISPLACEMENT | 8/31/2008 23:49:45 | 10 | SLOW RATE | 8/31/2008 23:58:50 |
| 11 | BUMP PLUG | 9/1/2008 00:02:50 | 12 | CHECK FLOATS | 9/1/2008 00:05:45 |
| 13 | END JOB | 9/1/2008 00:05:57 | | | |

| | | | | | |
|------------------------------------|--|------------------------|--|-------------------|--|
| Customer: CHEVRON | | Job Date: 8-31-08 | | Ticket #: 6138430 | |
| TRUCK#/OPERATOR ELITE#2/BRAD CHASE | | CEMENTER SCOTT GASAWAY | | ADC USED YES | |
| LEASE SKR | | WELL # 598-25-CV-15 | | CO REP ED DOHERTY | |