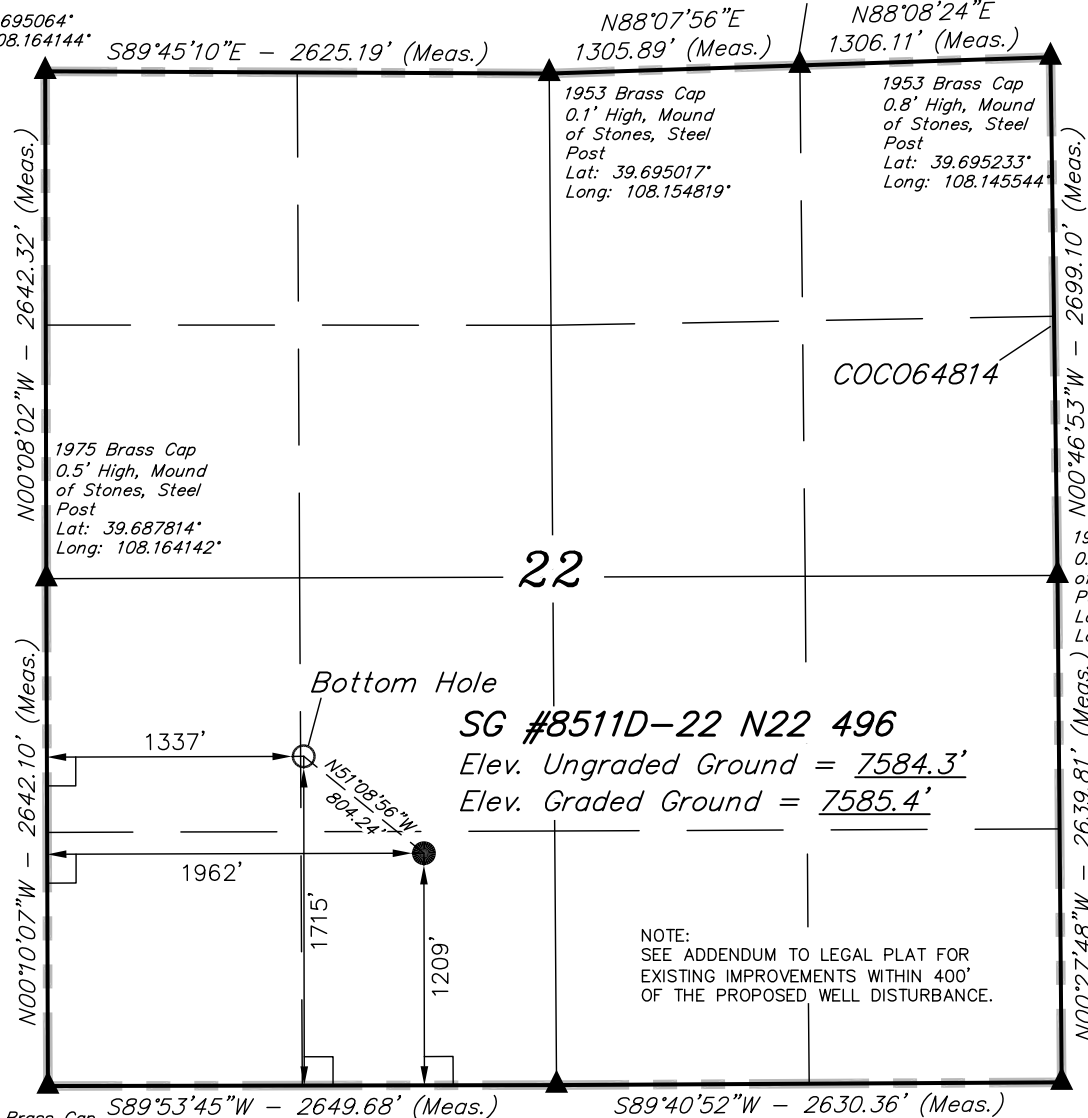


1953 Brass Cap
0.6' High, Mound
of Stones, Steel
Post
Lat: 39.695064°
Long: 108.164144°

T4S, R96W, 6th P.M.

1953 Brass Cap
Lat: 39.695125°
Long: 108.150181°



SG #8511D-22 N22 496
Elev. Ungraded Ground = 7584.3'
Elev. Graded Ground = 7585.4'

NOTE:
SEE ADDENDUM TO LEGAL PLAT FOR
EXISTING IMPROVEMENTS WITHIN 400'
OF THE PROPOSED WELL DISTURBANCE.

1953 Brass Cap
0.7' High, Mound
of Stones, Steel
Post
Lat: 39.680564°
Long: 108.164133°

1953 Brass Cap
0.5' High
Lat: 39.680561°
Long: 108.154725°

1953 Brass Cap
0.8' High, Steel
Post
Lat: 39.680583°
Long: 108.145383°

Encana OIL & GAS (USA) INC.

Well location, SG #8511D-22 N22 496, located as
shown in the SE 1/4 SW 1/4 of Section 22, T4S,
R96W, 6th P.M., Garfield County, Colorado.

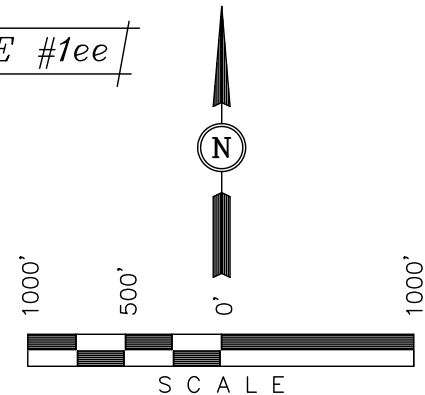
BASIS OF ELEVATION

BENCH MARK (H79) LOCATED IN THE NE 1/4 OF SECTION
35, T4S, R98W, 6th P.M. TAKEN FROM THE BULL FORK
QUADRANGLE, COLORADO, 7.5 MINUTE SERIES (TOPO
GRAPHICAL MAP) PUBLISHED BY THE UNITED STATES
DEPARTMENT OF THE INTERIOR, GEOLOGICAL SURVEY. SAID
ELEVATION IS MARKED AS BEING 8535 FEET.

BASIS OF BEARINGS

BASIS OF BEARINGS IS A G.P.S. OBSERVATION.

FIGURE #1ee



CERTIFICATE

THIS IS TO CERTIFY THAT THE ABOVE PLAT WAS PREPARED FROM
FIELD NOTES OF ACTUAL SURVEYS MADE BY ME OR UNDER MY
SUPERVISION AND THAT THE SAME ARE TRUE AND CORRECT TO THE
BEST OF MY KNOWLEDGE AND BELIEF.

REGISTERED LAND SURVEYOR
REGISTRATION NO. 17492
STATE OF COLORADO

REVISED: 12-14-10

UINTAH ENGINEERING & LAND SURVEYING
85 SOUTH 200 EAST - VERNAL, UTAH 84078
(435) 789-1017

LEGEND:

- └─┘ = 90° SYMBOL
- = PROPOSED WELL HEAD.
- ▲ = SECTION CORNERS LOCATED.

PDOP = 2.9

NAD 83 (TARGET BOTTOM HOLE)	NAD 83 (SURFACE LOCATION)
LATITUDE = 39°41'06.96" (39.685267)	LATITUDE = 39°41'01.96" (39.683878)
LONGITUDE = 108°09'33.80" (108.159389)	LONGITUDE = 108°09'25.81" (108.157169)
NAD 27 (TARGET BOTTOM HOLE)	NAD 27 (SURFACE LOCATION)
LATITUDE = 39°41'07.05" (39.685292)	LATITUDE = 39°41'02.05" (39.683903)
LONGITUDE = 108°09'31.51" (108.158753)	LONGITUDE = 108°09'23.52" (108.156533)

SCALE 1" = 1000'	DATE SURVEYED: 08-03-10	DATE DRAWN: 11-23-10
PARTY B.H. B.J. C.H.	REFERENCES G.L.O. PLAT	
WEATHER COOL	FILE Encana OIL & GAS (USA) INC.	