

T4S, R96W, 6th P.M.

Encana Oil & Gas (USA) INC.

Well location, SG #8509B-21 N22 496 (SURFACE LOCATION), located as shown in the SE 1/4 SW 1/4 of Section 22, T4S, R96W, 6th P.M., Garfield County, Colorado.

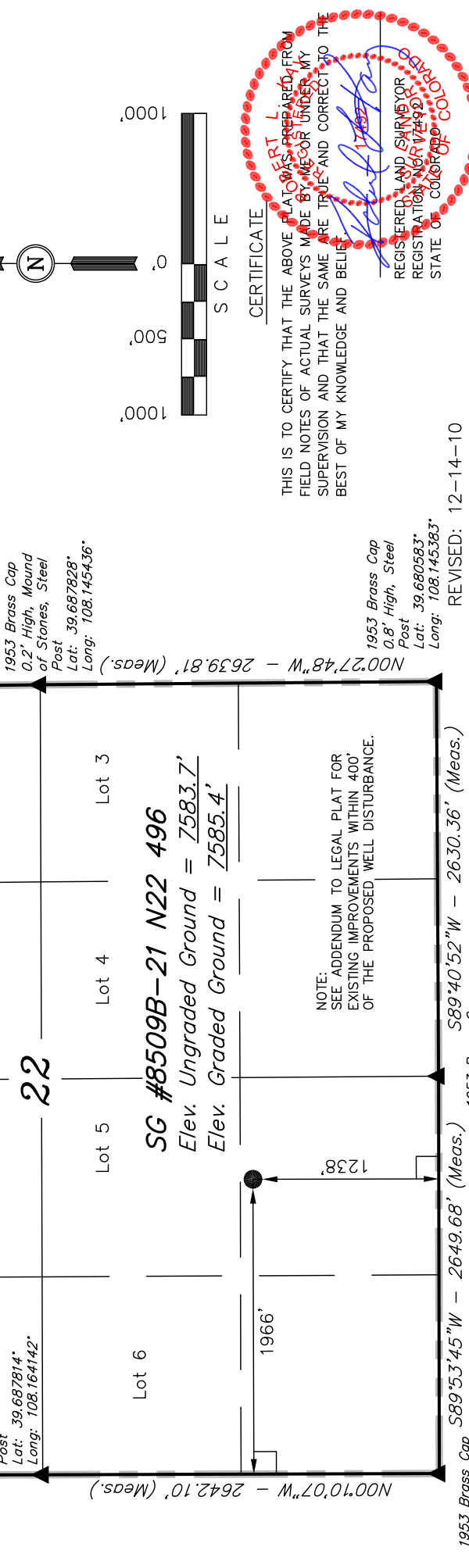
BASIS OF ELEVATION

BENCH MARK (H79) LOCATED IN THE NE 1/4 OF SECTION 35, T4S, R98W, 6th P.M. TAKEN FROM THE BULL FORK QUADRANGLE, COLORADO, 7.5 MINUTE SERIES (TOPOGRAPHICAL MAP) PUBLISHED BY THE UNITED STATES DEPARTMENT OF THE INTERIOR, GEOLOGICAL SURVEY. SAID ELEVATION IS MARKED AS BEING 8535 FEET.

BASIS OF BEARINGS

BASIS OF BEARINGS IS A G.P.S. OBSERVATION.

FIGURE #1cc



UNTAH ENGINEERING & LAND SURVEYING

85 SOUTH 200 EAST - VERNAL, UTAH 84078

(435) 789-1017

REVISD: 12-14-10

SCALE 1" = 1000'

PARTY B.H. B.J. C.H.

WEATHER COOL

DATE SURVEYED: 08-03-10

REFERENCES G.L.O. PLAT

FILE

ENCANA OIL & GAS (USA) INC.

PDOP = 3.1

NAD 83 (SURFACE LOCATION)

LATITUDE = 39°41'02.25" (39.683958)

LONGITUDE = 108°09'25.76" (108.157156)

NAD 27 (SURFACE LOCATION)

LATITUDE = 39°41'02.34" (39.683983)

LONGITUDE = 108°09'23.47" (108.156519)

NOTE:

THE PROPOSED BOTTOM HOLE FOR THIS WELL IS LOCATED IN THE NE 1/4 SE 1/4 OF SECTION 21, T4S, R96W, 6th P.M. AT A DISTANCE OF 2211' FSL 1303' FEL. IT BEARS N73°33'56"W 3410.58' FROM THE PROPOSED WELL HEAD.

LEGEND:

90° SYMBOL

PROPOSED WELL HEAD.

SECTION CORNERS LOCATED.

CERTIFICATE

THIS IS TO CERTIFY THAT THE ABOVE PLAT WAS PREPARED FROM FIELD NOTES OF ACTUAL SURVEYS MADE BY ME OR UNDER MY SUPERVISION AND THAT THE SAME ARE TRUE AND CORRECT TO THE BEST OF MY KNOWLEDGE AND BELIEF.

REGISTERED LAND SURVEYOR
REGISTRATION NO. 17492
STATE OF COLORADO

T4S, R96W, 6th P.M.

1953 Brass Cap
0.6' High, Mound
of Stones, Steel
Post
Lat: 39.695064°
Long: 108.164144°

N89°31'49"W - 2639.56' (Meas.)

1967 Brass Cap,
1.4' High, Pile of
Stones
Lat: 39.695172°
Long: 108.182961°

1970 Brass Cap,
0.5' High, Pile of
Stones
Lat: 39.695097°
Long: 108.173586°

S00°08'33"E - 2675.53' (Meas.)

1970 Brass Cap
Flush W/ Ground,
Mound of Stones
Lat: 39.687831°
Long: 108.182956°

21

SG #8509B-21 N22 496
Target Bottom Hole

COC064815

COC062562

N00°10'07"W - 2642.10' (Meas.)

1303'

2211'

1938 Brass Cap
0.5' High, Mound
of Stones, Steel
Post
Lat: 39.680550°
Long: 108.173567°

1938 Brass Cap
0.5' High, Mound
of Stones
Lat: 39.680561°
Long: 108.183031°

S89°58'20"W - 2664.87' (Meas.)

S89°47'10"W - 2655.62' (Meas.)

NOTE:
THE PROPOSED BOTTOM HOLE FOR THIS WELL
BEARS N73°33'56"W 3410.58' FROM THE
PROPOSED WELL HEAD.

LEGEND:

— = 90° SYMBOL

● = PROPOSED WELL HEAD.

▲ = SECTION CORNERS LOCATED.

Encana OIL & GAS (USA) INC.

Well location, SG #8509B-21 N22 496 (TARGET
BOTTOM HOLE), located as shown in the NE 1/4
SE 1/4 of Section 21, T4S, R96W, 6th P.M.,
Garfield County, Colorado.

BASIS OF ELEVATION

BENCH MARK (H79) LOCATED IN THE NE 1/4 OF SECTION
35, T4S, R98W, 6th P.M. TAKEN FROM THE BULL FORK
QUADRANGLE, COLORADO, 7.5 MINUTE SERIES (TOPO
GRAPHICAL MAP) PUBLISHED BY THE UNITED STATES
DEPARTMENT OF THE INTERIOR, GEOLOGICAL SURVEY. SAID
ELEVATION IS MARKED AS BEING 8535 FEET.

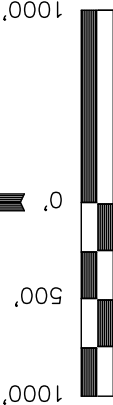
BASIS OF BEARINGS

BASIS OF BEARINGS IS A G.P.S. OBSERVATION.

FIGURE #1dd



1975 Brass Cap
0.5' High, Mound
of Stones, Steel
Post
Lat: 39.687814°
Long: 108.164142°



S C A L E

CERTIFICATE

THIS IS TO CERTIFY THAT THE ABOVE PLAT WAS PREPARED FROM
FIELD NOTES OF ACTUAL SURVEYS MADE BY ME OR UNDER MY
SUPERVISION AND THAT THE SAME ARE TRUE AND CORRECT TO THE
BEST OF MY KNOWLEDGE AND BELIEF.

1953 Brass Cap
0.7' High, Mound
of Stones, Steel
Post
Lat: 39.680564°
Long: 108.164133°

REVISED: 12-14-10

UINTAH ENGINEERING & LAND SURVEYING

85 SOUTH 200 EAST - VERNAL, UTAH 84078

(435) 789-1017

SCALE 1" = 1000'	DATE SURVEYED: 08-03-10	DATE DRAWN: 11-23-10
PARTY B.H. B.J. C.H.	REFERENCES G.L.O. PLAT	
WEATHER COOL	FILE	
Encana OIL & GAS (USA) INC.		

NAD 83 (TARGET BOTTOM HOLE)	
LATITUDE = 39°41'11.85"	(39.686625)
LONGITUDE = 108°10'07.56"	(108.168767)
NAD 27 (TARGET BOTTOM HOLE)	
LATITUDE = 39°41'11.94"	(39.686650)
LONGITUDE = 108°10'05.27"	(108.168131)