

Denver Division- Colorado

DJ - Hereford Ranch

Fiscus Mesa 20-22H

Fiscus Mesa 20-22H

Original Wellbore

Plan: APD Directional Plan

Standard Planning Report

21 March, 2011

EOG Resources Inc

Planning Report

Database:	EDM	Local Co-ordinate Reference:	Site Fiscus Mesa 20-22H
Company:	Denver Division- Colorado	TVD Reference:	RIG @ 4844.00ft (TBD)
Project:	DJ - Hereford Ranch	MD Reference:	RIG @ 4844.00ft (TBD)
Site:	Fiscus Mesa 20-22H	North Reference:	True
Well:	Fiscus Mesa 20-22H	Survey Calculation Method:	Minimum Curvature
Wellbore:	Original Wellbore		
Design:	APD Directional Plan		

Project	DJ - Hereford Ranch, Weld County		
Map System:	US State Plane 1927 (Exact solution)	System Datum:	Mean Sea Level
Geo Datum:	NAD 1927 (NADCON CONUS)		
Map Zone:	Colorado North 501		

Site	Fiscus Mesa 20-22H		
Site Position:		Northing:	513,349.17 ft
From:	Lat/Long	Easting:	2,457,148.56 ft
Position Uncertainty:	0.00 ft	Slot Radius:	"
		Latitude:	40° 43' 51.190 N
		Longitude:	103° 51' 1.771 W
		Grid Convergence:	1.07 deg

Well	Fiscus Mesa 20-22H					
Well Position	+N/-S	0.00 ft	Northing:	513,349.17 ft	Latitude:	40° 43' 51.190 N
	+E/-W	0.00 ft	Easting:	2,457,148.56 ft	Longitude:	103° 51' 1.771 W
Position Uncertainty		0.00 ft	Wellhead Elevation:	ft	Ground Level:	4,822.00 ft

Wellbore	Original Wellbore				
Magnetics	Model Name	Sample Date	Declination (deg)	Dip Angle (deg)	Field Strength (nT)
	IGRF200510	3/21/2011	8.38	67.48	53,443

Design	APD Directional Plan			
Audit Notes:				
Version:	Phase:	PROTOTYPE	Tie On Depth:	0.00
Vertical Section:	Depth From (TVD) (ft)	+N/-S (ft)	+E/-W (ft)	Direction (deg)
	0.00	0.00	0.00	337.17

Plan Sections										
Measured Depth (ft)	Inclination (deg)	Azimuth (deg)	Vertical Depth (ft)	+N/-S (ft)	+E/-W (ft)	Dogleg Rate (?/100ft)	Build Rate (?/100ft)	Turn Rate (?/100ft)	TFO (deg)	Target
0.00	0.00	0.00	0.00	0.00	0.00	0.00	0.00	0.00	0.00	
5,313.53	0.00	0.00	5,313.53	0.00	0.00	0.00	0.00	0.00	0.00	
6,063.54	90.00	337.17	5,791.00	440.05	-185.28	12.00	12.00	0.00	337.17	
10,142.01	90.00	337.17	5,791.00	4,198.91	-1,767.97	0.00	0.00	0.00	0.00	Fiscus Mesa 20-22H

EOG Resources Inc

Planning Report

Database:	EDM	Local Co-ordinate Reference:	Site Fiscus Mesa 20-22H
Company:	Denver Division- Colorado	TVD Reference:	RIG @ 4844.00ft (TBD)
Project:	DJ - Hereford Ranch	MD Reference:	RIG @ 4844.00ft (TBD)
Site:	Fiscus Mesa 20-22H	North Reference:	True
Well:	Fiscus Mesa 20-22H	Survey Calculation Method:	Minimum Curvature
Wellbore:	Original Wellbore		
Design:	APD Directional Plan		

Planned Survey

Measured Depth (ft)	Inclination (deg)	Azimuth (deg)	Vertical Depth (ft)	+N/-S (ft)	+E/-W (ft)	Vertical Section (ft)	Dogleg Rate (?/100ft)	Build Rate (?/100ft)	Turn Rate (?/100ft)
0.00	0.00	0.00	0.00	0.00	0.00	0.00	0.00	0.00	0.00
100.00	0.00	0.00	100.00	0.00	0.00	0.00	0.00	0.00	0.00
200.00	0.00	0.00	200.00	0.00	0.00	0.00	0.00	0.00	0.00
300.00	0.00	0.00	300.00	0.00	0.00	0.00	0.00	0.00	0.00
400.00	0.00	0.00	400.00	0.00	0.00	0.00	0.00	0.00	0.00
500.00	0.00	0.00	500.00	0.00	0.00	0.00	0.00	0.00	0.00
600.00	0.00	0.00	600.00	0.00	0.00	0.00	0.00	0.00	0.00
700.00	0.00	0.00	700.00	0.00	0.00	0.00	0.00	0.00	0.00
800.00	0.00	0.00	800.00	0.00	0.00	0.00	0.00	0.00	0.00
9-5/8"									
900.00	0.00	0.00	900.00	0.00	0.00	0.00	0.00	0.00	0.00
1,000.00	0.00	0.00	1,000.00	0.00	0.00	0.00	0.00	0.00	0.00
1,100.00	0.00	0.00	1,100.00	0.00	0.00	0.00	0.00	0.00	0.00
1,200.00	0.00	0.00	1,200.00	0.00	0.00	0.00	0.00	0.00	0.00
1,300.00	0.00	0.00	1,300.00	0.00	0.00	0.00	0.00	0.00	0.00
1,400.00	0.00	0.00	1,400.00	0.00	0.00	0.00	0.00	0.00	0.00
1,500.00	0.00	0.00	1,500.00	0.00	0.00	0.00	0.00	0.00	0.00
1,600.00	0.00	0.00	1,600.00	0.00	0.00	0.00	0.00	0.00	0.00
1,700.00	0.00	0.00	1,700.00	0.00	0.00	0.00	0.00	0.00	0.00
1,800.00	0.00	0.00	1,800.00	0.00	0.00	0.00	0.00	0.00	0.00
1,900.00	0.00	0.00	1,900.00	0.00	0.00	0.00	0.00	0.00	0.00
2,000.00	0.00	0.00	2,000.00	0.00	0.00	0.00	0.00	0.00	0.00
2,100.00	0.00	0.00	2,100.00	0.00	0.00	0.00	0.00	0.00	0.00
2,200.00	0.00	0.00	2,200.00	0.00	0.00	0.00	0.00	0.00	0.00
2,300.00	0.00	0.00	2,300.00	0.00	0.00	0.00	0.00	0.00	0.00
2,400.00	0.00	0.00	2,400.00	0.00	0.00	0.00	0.00	0.00	0.00
2,500.00	0.00	0.00	2,500.00	0.00	0.00	0.00	0.00	0.00	0.00
2,600.00	0.00	0.00	2,600.00	0.00	0.00	0.00	0.00	0.00	0.00
2,700.00	0.00	0.00	2,700.00	0.00	0.00	0.00	0.00	0.00	0.00
2,800.00	0.00	0.00	2,800.00	0.00	0.00	0.00	0.00	0.00	0.00
2,900.00	0.00	0.00	2,900.00	0.00	0.00	0.00	0.00	0.00	0.00
3,000.00	0.00	0.00	3,000.00	0.00	0.00	0.00	0.00	0.00	0.00
3,100.00	0.00	0.00	3,100.00	0.00	0.00	0.00	0.00	0.00	0.00
3,200.00	0.00	0.00	3,200.00	0.00	0.00	0.00	0.00	0.00	0.00
3,300.00	0.00	0.00	3,300.00	0.00	0.00	0.00	0.00	0.00	0.00
3,400.00	0.00	0.00	3,400.00	0.00	0.00	0.00	0.00	0.00	0.00
3,500.00	0.00	0.00	3,500.00	0.00	0.00	0.00	0.00	0.00	0.00
3,600.00	0.00	0.00	3,600.00	0.00	0.00	0.00	0.00	0.00	0.00
3,700.00	0.00	0.00	3,700.00	0.00	0.00	0.00	0.00	0.00	0.00
3,800.00	0.00	0.00	3,800.00	0.00	0.00	0.00	0.00	0.00	0.00
3,900.00	0.00	0.00	3,900.00	0.00	0.00	0.00	0.00	0.00	0.00
4,000.00	0.00	0.00	4,000.00	0.00	0.00	0.00	0.00	0.00	0.00
4,100.00	0.00	0.00	4,100.00	0.00	0.00	0.00	0.00	0.00	0.00
4,200.00	0.00	0.00	4,200.00	0.00	0.00	0.00	0.00	0.00	0.00
4,300.00	0.00	0.00	4,300.00	0.00	0.00	0.00	0.00	0.00	0.00
4,400.00	0.00	0.00	4,400.00	0.00	0.00	0.00	0.00	0.00	0.00
4,500.00	0.00	0.00	4,500.00	0.00	0.00	0.00	0.00	0.00	0.00
4,600.00	0.00	0.00	4,600.00	0.00	0.00	0.00	0.00	0.00	0.00
4,700.00	0.00	0.00	4,700.00	0.00	0.00	0.00	0.00	0.00	0.00
4,800.00	0.00	0.00	4,800.00	0.00	0.00	0.00	0.00	0.00	0.00
4,900.00	0.00	0.00	4,900.00	0.00	0.00	0.00	0.00	0.00	0.00
5,000.00	0.00	0.00	5,000.00	0.00	0.00	0.00	0.00	0.00	0.00
5,100.00	0.00	0.00	5,100.00	0.00	0.00	0.00	0.00	0.00	0.00

EOG Resources Inc

Planning Report

Database:	EDM	Local Co-ordinate Reference:	Site Fiscus Mesa 20-22H
Company:	Denver Division- Colorado	TVD Reference:	RIG @ 4844.00ft (TBD)
Project:	DJ - Hereford Ranch	MD Reference:	RIG @ 4844.00ft (TBD)
Site:	Fiscus Mesa 20-22H	North Reference:	True
Well:	Fiscus Mesa 20-22H	Survey Calculation Method:	Minimum Curvature
Wellbore:	Original Wellbore		
Design:	APD Directional Plan		

Planned Survey

Measured Depth (ft)	Inclination (deg)	Azimuth (deg)	Vertical Depth (ft)	+N/-S (ft)	+E/-W (ft)	Vertical Section (ft)	Dogleg Rate (?/100ft)	Build Rate (?/100ft)	Turn Rate (?/100ft)
5,200.00	0.00	0.00	5,200.00	0.00	0.00	0.00	0.00	0.00	0.00
5,300.00	0.00	0.00	5,300.00	0.00	0.00	0.00	0.00	0.00	0.00
5,313.53	0.00	0.00	5,313.53	0.00	0.00	0.00	0.00	0.00	0.00
5,400.00	10.38	337.17	5,399.53	7.20	-3.03	7.81	12.00	12.00	0.00
5,500.00	22.38	337.17	5,495.30	33.13	-13.95	35.95	12.00	12.00	0.00
5,600.00	34.38	337.17	5,583.12	76.85	-32.36	83.39	12.00	12.00	0.00
5,700.00	46.38	337.17	5,659.16	136.45	-57.45	148.05	12.00	12.00	0.00
5,800.00	58.38	337.17	5,720.10	209.31	-88.13	227.11	12.00	12.00	0.00
5,900.00	70.38	337.17	5,763.27	292.26	-123.06	317.11	12.00	12.00	0.00
6,000.00	82.38	337.17	5,786.78	381.66	-160.70	414.12	12.00	12.00	0.00
6,063.54	90.00	337.17	5,791.00	440.05	-185.29	477.47	12.00	12.00	0.00
7"									
6,100.00	90.00	337.17	5,791.00	473.66	-199.44	513.93	0.00	0.00	0.00
6,200.00	90.00	337.17	5,791.00	565.82	-238.24	613.93	0.00	0.00	0.00
6,300.00	90.00	337.17	5,791.00	657.98	-277.05	713.93	0.00	0.00	0.00
6,400.00	90.00	337.17	5,791.00	750.15	-315.85	813.93	0.00	0.00	0.00
6,500.00	90.00	337.17	5,791.00	842.31	-354.66	913.93	0.00	0.00	0.00
6,600.00	90.00	337.17	5,791.00	934.47	-393.46	1,013.93	0.00	0.00	0.00
6,700.00	90.00	337.17	5,791.00	1,026.64	-432.27	1,113.93	0.00	0.00	0.00
6,800.00	90.00	337.17	5,791.00	1,118.80	-471.08	1,213.93	0.00	0.00	0.00
6,900.00	90.00	337.17	5,791.00	1,210.96	-509.88	1,313.93	0.00	0.00	0.00
7,000.00	90.00	337.17	5,791.00	1,303.13	-548.69	1,413.93	0.00	0.00	0.00
7,100.00	90.00	337.17	5,791.00	1,395.29	-587.49	1,513.93	0.00	0.00	0.00
7,200.00	90.00	337.17	5,791.00	1,487.45	-626.30	1,613.93	0.00	0.00	0.00
7,300.00	90.00	337.17	5,791.00	1,579.62	-665.11	1,713.93	0.00	0.00	0.00
7,400.00	90.00	337.17	5,791.00	1,671.78	-703.91	1,813.93	0.00	0.00	0.00
7,500.00	90.00	337.17	5,791.00	1,763.94	-742.72	1,913.93	0.00	0.00	0.00
7,600.00	90.00	337.17	5,791.00	1,856.11	-781.52	2,013.93	0.00	0.00	0.00
7,700.00	90.00	337.17	5,791.00	1,948.27	-820.33	2,113.93	0.00	0.00	0.00
7,800.00	90.00	337.17	5,791.00	2,040.43	-859.14	2,213.93	0.00	0.00	0.00
7,900.00	90.00	337.17	5,791.00	2,132.60	-897.94	2,313.93	0.00	0.00	0.00
8,000.00	90.00	337.17	5,791.00	2,224.76	-936.75	2,413.93	0.00	0.00	0.00
8,100.00	90.00	337.17	5,791.00	2,316.92	-975.55	2,513.93	0.00	0.00	0.00
8,200.00	90.00	337.17	5,791.00	2,409.09	-1,014.36	2,613.93	0.00	0.00	0.00
8,300.00	90.00	337.17	5,791.00	2,501.25	-1,053.17	2,713.93	0.00	0.00	0.00
8,400.00	90.00	337.17	5,791.00	2,593.42	-1,091.97	2,813.93	0.00	0.00	0.00
8,500.00	90.00	337.17	5,791.00	2,685.58	-1,130.78	2,913.93	0.00	0.00	0.00
8,600.00	90.00	337.17	5,791.00	2,777.74	-1,169.58	3,013.93	0.00	0.00	0.00
8,700.00	90.00	337.17	5,791.00	2,869.91	-1,208.39	3,113.93	0.00	0.00	0.00
8,800.00	90.00	337.17	5,791.00	2,962.07	-1,247.19	3,213.93	0.00	0.00	0.00
8,900.00	90.00	337.17	5,791.00	3,054.23	-1,286.00	3,313.93	0.00	0.00	0.00
9,000.00	90.00	337.17	5,791.00	3,146.40	-1,324.81	3,413.93	0.00	0.00	0.00
9,100.00	90.00	337.17	5,791.00	3,238.56	-1,363.61	3,513.93	0.00	0.00	0.00
9,200.00	90.00	337.17	5,791.00	3,330.72	-1,402.42	3,613.93	0.00	0.00	0.00
9,300.00	90.00	337.17	5,791.00	3,422.89	-1,441.22	3,713.93	0.00	0.00	0.00
9,400.00	90.00	337.17	5,791.00	3,515.05	-1,480.03	3,813.93	0.00	0.00	0.00
9,500.00	90.00	337.17	5,791.00	3,607.21	-1,518.84	3,913.93	0.00	0.00	0.00
9,600.00	90.00	337.17	5,791.00	3,699.38	-1,557.64	4,013.93	0.00	0.00	0.00
9,700.00	90.00	337.17	5,791.00	3,791.54	-1,596.45	4,113.93	0.00	0.00	0.00
9,800.00	90.00	337.17	5,791.00	3,883.70	-1,635.25	4,213.93	0.00	0.00	0.00
9,900.00	90.00	337.17	5,791.00	3,975.87	-1,674.06	4,313.93	0.00	0.00	0.00
10,000.00	90.00	337.17	5,791.00	4,068.03	-1,712.87	4,413.93	0.00	0.00	0.00
10,100.00	90.00	337.17	5,791.00	4,160.19	-1,751.67	4,513.93	0.00	0.00	0.00

EOG Resources Inc

Planning Report

Database:	EDM	Local Co-ordinate Reference:	Site Fiscus Mesa 20-22H
Company:	Denver Division- Colorado	TVD Reference:	RIG @ 4844.00ft (TBD)
Project:	DJ - Hereford Ranch	MD Reference:	RIG @ 4844.00ft (TBD)
Site:	Fiscus Mesa 20-22H	North Reference:	True
Well:	Fiscus Mesa 20-22H	Survey Calculation Method:	Minimum Curvature
Wellbore:	Original Wellbore		
Design:	APD Directional Plan		

Planned Survey									
Measured Depth (ft)	Inclination (deg)	Azimuth (deg)	Vertical Depth (ft)	+N/-S (ft)	+E/-W (ft)	Vertical Section (ft)	Dogleg Rate (?/100ft)	Build Rate (?/100ft)	Turn Rate (?/100ft)
10,142.01	90.00	337.17	5,791.00	4,198.91	-1,767.97	4,555.94	0.00	0.00	0.00
Fiscus Mesa 20-22H (BHL)									

Targets									
Target Name									
- hit/miss target	Dip Angle (deg)	Dip Dir. (deg)	TVD (ft)	+N/-S (ft)	+E/-W (ft)	Northing (ft)	Easting (ft)	Latitude	Longitude
- Shape									
Fiscus Mesa 20-22H (0.00	0.00	5,791.00	4,198.91	-1,767.97	517,514.46	2,455,302.79	40° 44' 32.680 N	103° 51' 24.739 W
- plan hits target center									
- Point									

Casing Points					
Measured Depth (ft)	Vertical Depth (ft)	Name		Casing Diameter (")	Hole Diameter (")
800.00	800.00	9-5/8"		9-5/8	13-1/2
6,063.54	5,791.00	7"		7	8-3/4
10,142.01	5,791.00	4 1/2"		4-1/2	6

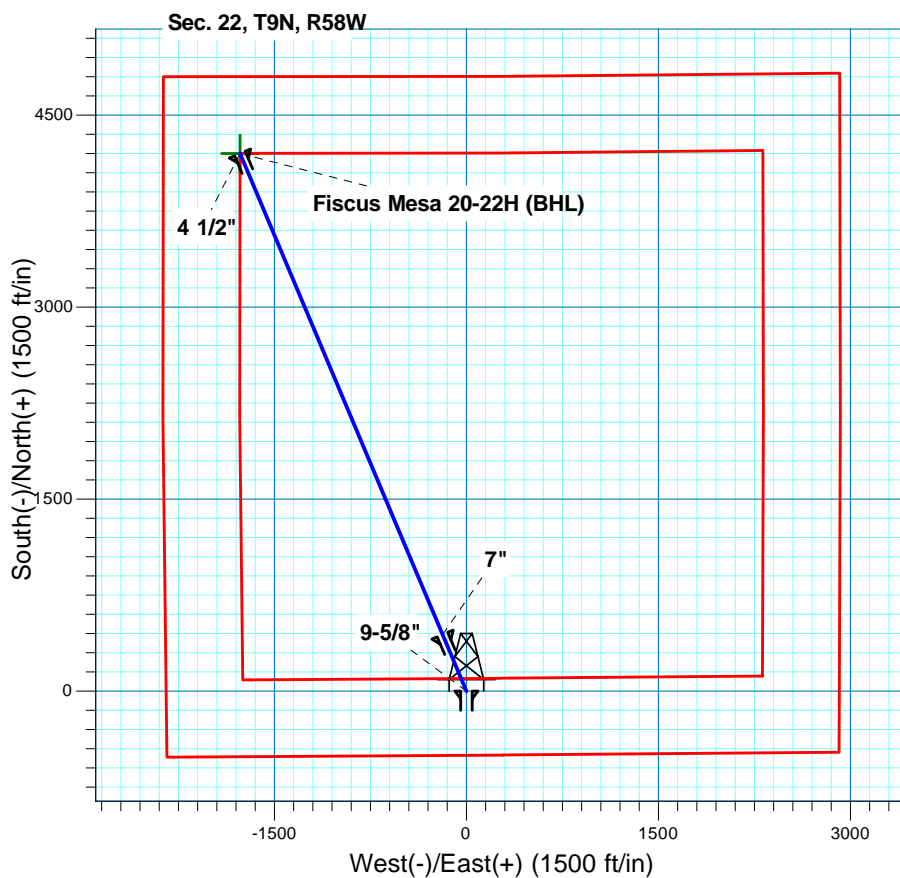
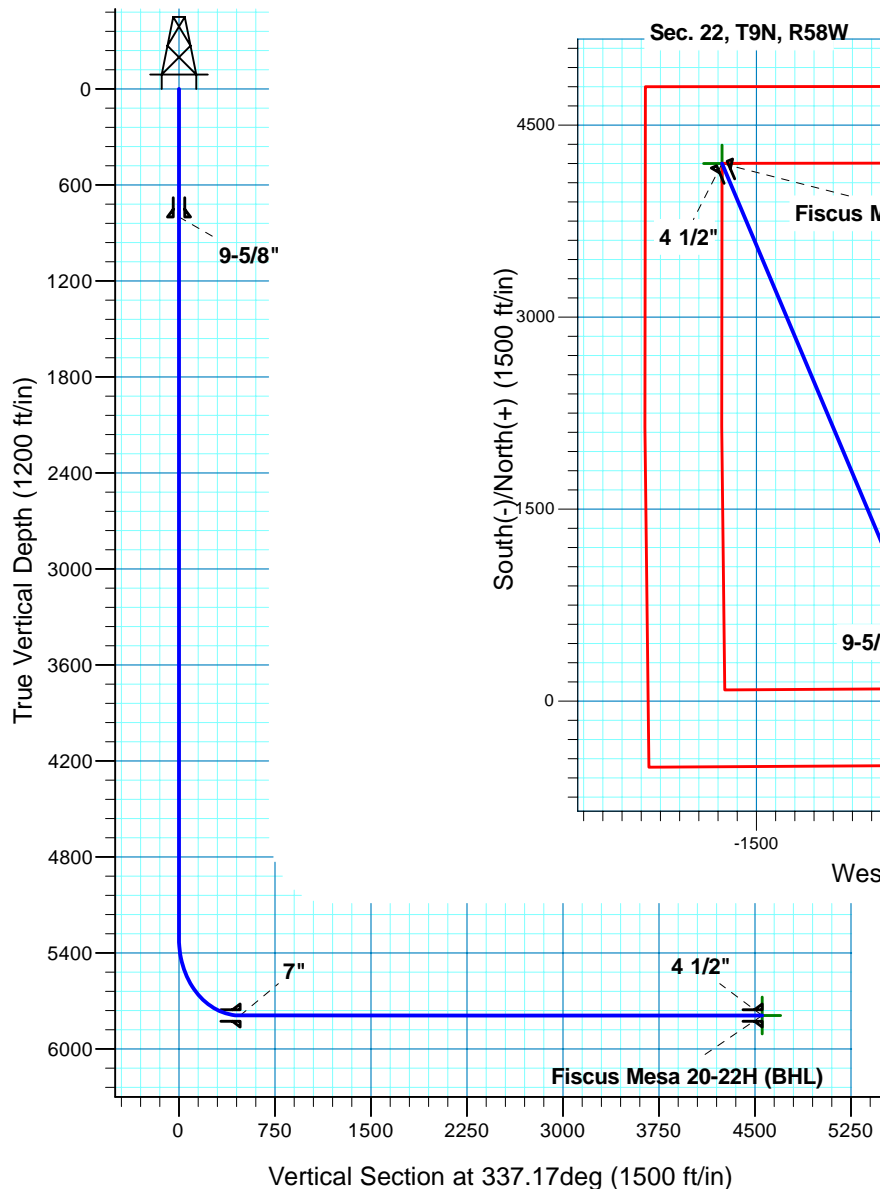
Fiscus Mesa 20-22H

Section 22 T9N R58W

Weld County, CO

Surface Location

NAD 1927 (NADCON CONUS) Colorado North 501
 Ground Elevation: 4822.00 RIG @ 4844.00ft (TBD)
 Northing Easting Latitude Longitude
 513349.17 2457148.56 40° 43' 51.190 N 103° 51' 1.771 W



T M
 Azimuths to True North
 Magnetic North: 8.38°
 Magnetic Field
 Strength: 53442.8snT
 Dip Angle: 67.48°
 Date: 3/21/2011
 Model: IGRF200510

Project: DJ - Hereford Ranch
 Site: Fiscus Mesa 20-22H
 Well: Fiscus Mesa 20-22H
 Plan: APD Directional Plan

SECTION DETAILS

Sec	MD	Inc	Azi	TVD	+N/-S	+E/-W	DLeg	TFace	VSec	Target
1	0.00	0.00	0.00	0.00	0.00	0.00	0.00	0.00	0.00	
2	5313.53	0.00	0.00	5313.53	0.00	0.00	0.00	0.00	0.00	
3	6063.54	90.00	337.17	5791.00	440.05	-185.28	12.00	337.17	477.47	
4	10142.01	90.00	337.17	5791.00	4198.91	-1767.97	0.00	0.00	4555.94	Fiscus Mesa 20-22H (BHL)

TARGET DETAILS

Name	TVD	+N/-S	+E/-W	Northing	Easting	Latitude	Longitude	Shape
Fiscus Mesa 20-22H (BHL)	5791.00	4198.91	-1767.97	517514.46	2455302.79	40° 44' 32.680 N	103° 51' 24.739 W	Point