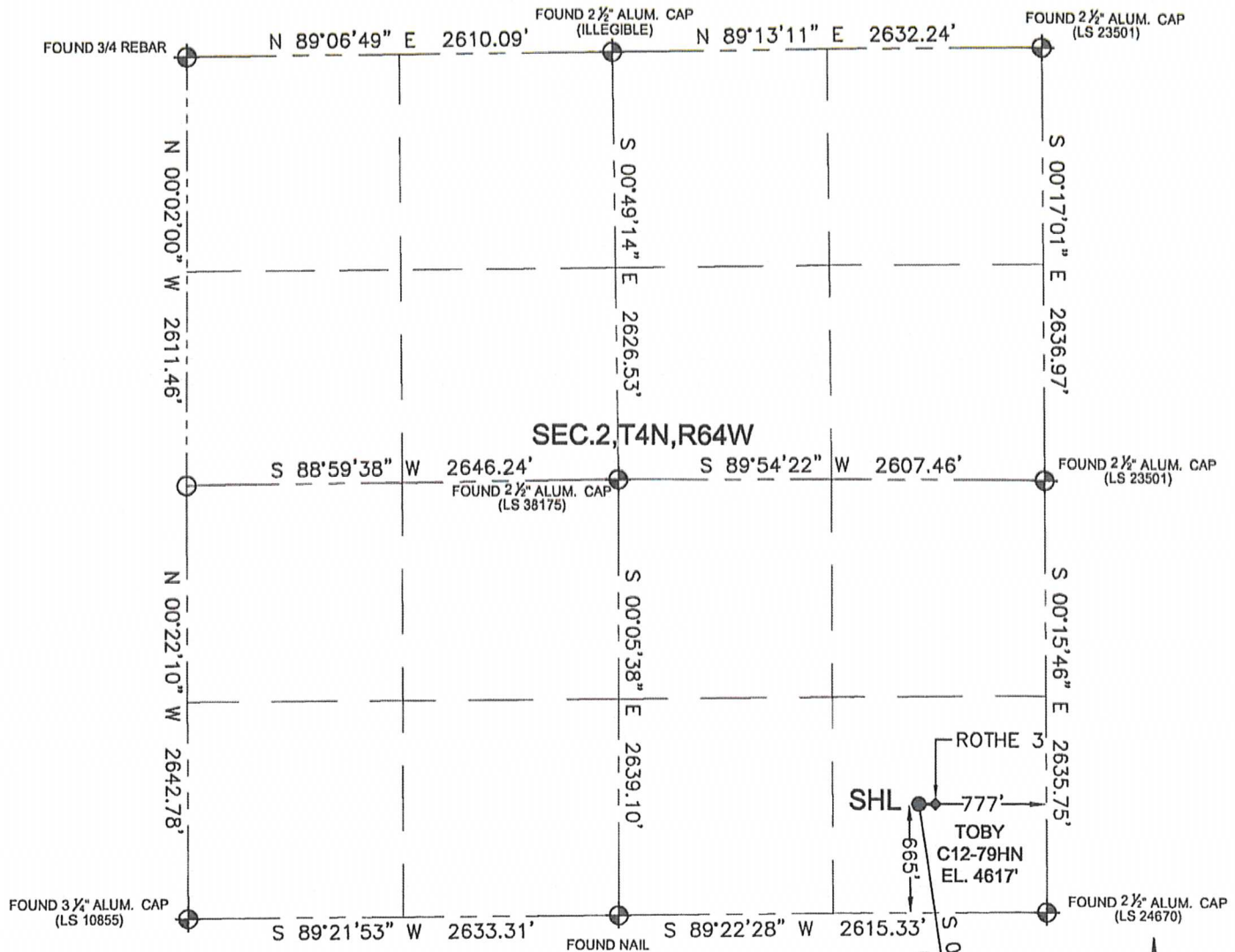


WELL LOCATION CERTIFICATE

THIS MAP DOES NOT REPRESENT A BOUNDARY SURVEY

SECTION: 2
TOWNSHIP: 4N
RANGE: 64W

In accordance with a request from Brian DeRose with Noble Energy Inc. Petroleum Field Services, LLC has determined the surface location of the TOBY C12-79HN to be 665' from the SOUTH line and 777' from the EAST line as measured at right angles from the section line of Section 2, Township 4 North, Range 64 West of the Sixth Principal Meridian, County of Weld, State of Colorado and the bottom hole to be 150' from the NORTH line and 75' from the WEST line as measured at right angles from the section line of Section 13, Township 4 North, Range 64 West of the Sixth Principal Meridian, County of Weld, State of Colorado.

I hereby state that this Well Location Certificate was prepared by me, or under my direct supervision, that the fieldwork was completed on 02-10-11, for and on behalf of Noble Energy Inc., that this is not a Land Survey Plat or an Improvement Survey Plat, and that it is not to be relied upon for establishment of fence, building, or other future improvement lines.

Note:

- 1) Bearings shown are Grid Bearings of the Colorado State Plane Coordinate System, North Zone, North American Datum 1983/2007. The lineal dimensions as contained herein are based upon the "U.S. Survey Foot."
- 2) Ground elevations are based on an observed GPS elevation (NAVD 1988 DATUM).
- 3) NEAREST EXISTING WELL: ROTHE 3 67' EAST
- 4) IMPROVEMENTS: See LOCATION DRAWING exhibit for all visible improvements within 400' of disturbed area.
- 5) SURFACE USE: IRRIGATED CROP
- 6) INSTRUMENT OPERATOR: BEN MILIUS

Note:

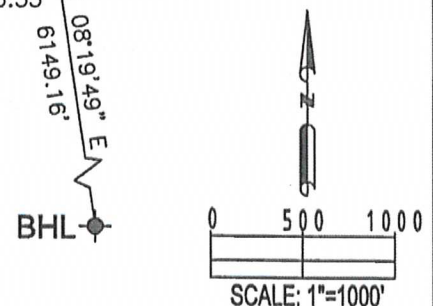
According to Colorado law, you must commence any legal action based upon any defect in this W.L.C. within three years after you first discover such defect. In no event, may any action based upon any defect in this survey be commenced more than ten years after the date of this certification shown hereon. (13-80-105 C.R.S.)

LEGEND

- ⊕ = FOUND MONUMENT
- = PROPOSED WELL
- ⊙ = BOTTOM HOLE
- ◆ = EXISTING WELL

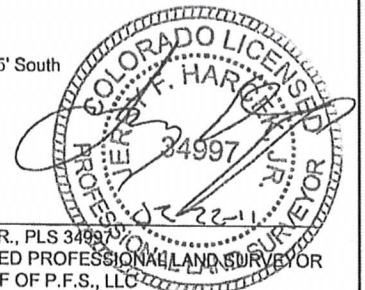
SURFACE LOCATION:
LATITUDE: 40.33600°N
LONGITUDE: 104.51102°W
PDOP: 1.8
ELEV: 4617'
NEAREST PROPERTY LINE: 635' South

BOTTOM HOLE:
LATITUDE: 40.31927°N
LONGITUDE: 104.50807°W



SHEET 1 OF 4

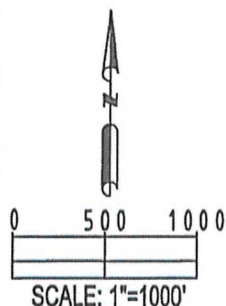
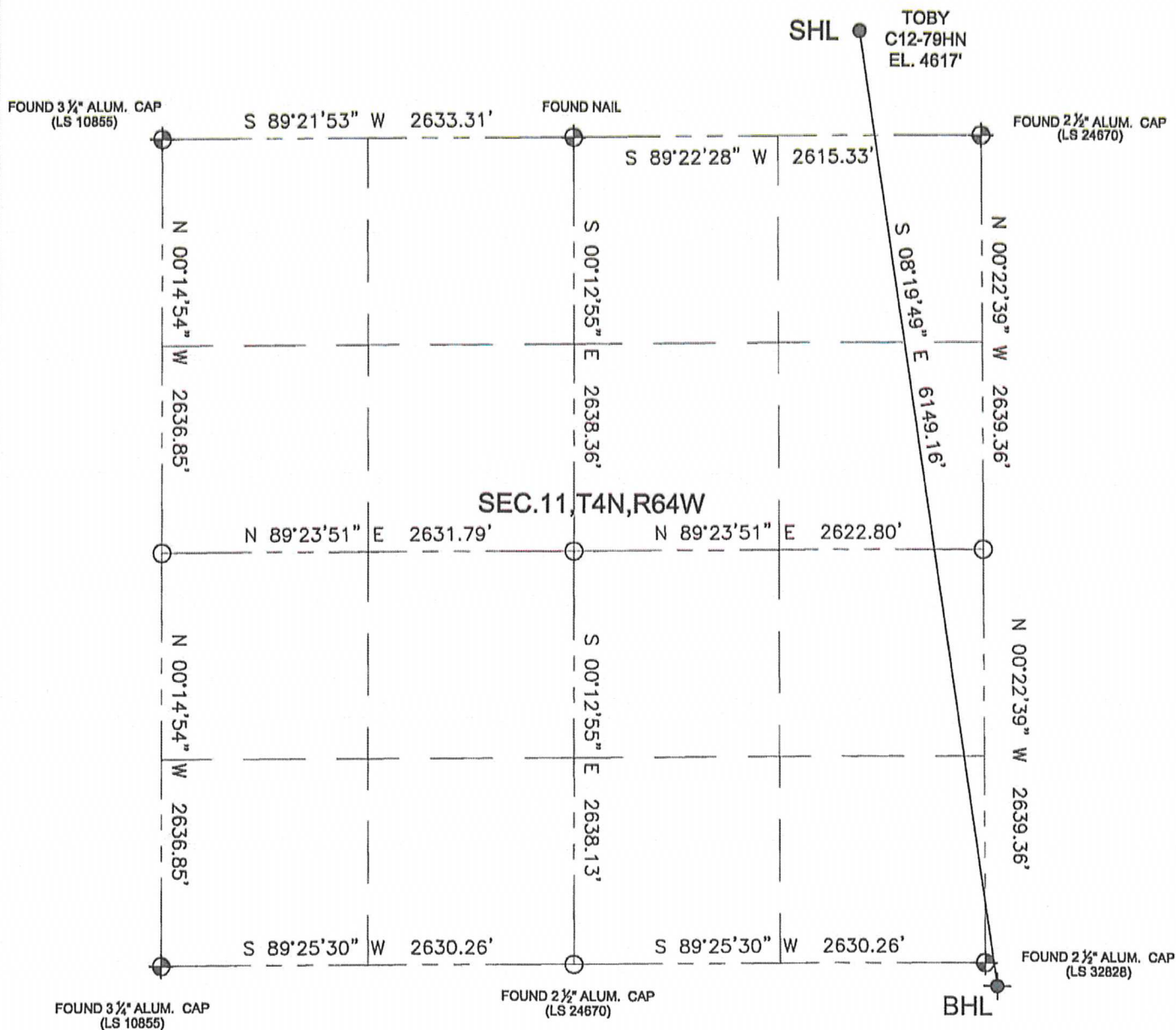
JERRY F. HARCEK JR., PLS 34997
COLORADO LICENSED PROFESSIONAL LAND SURVEYOR
FOR AND ON BEHALF OF P.F.S., LLC



WELL LOCATION CERTIFICATE

THIS MAP DOES NOT REPRESENT A BOUNDARY SURVEY

SECTION: 11
TOWNSHIP: 4N
RANGE: 64W

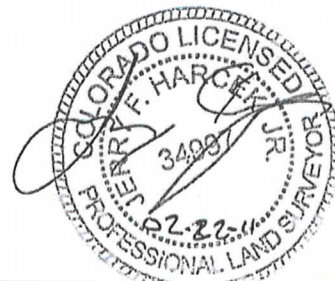


Note:
According to Colorado law, you must commence any legal action based upon any defect in this W.L.C. within three years after you first discover such defect. In no event, may any action based upon any defect in this survey be commenced more than ten years after the date of this certification shown hereon. (13-80-105 C.R.S.)

LEGEND

- ⊕ = FOUND MONUMENT
- = PROPOSED WELL
- ⊙ = BOTTOM HOLE
- ◆ = EXISTING WELL

SHEET 2 OF 4

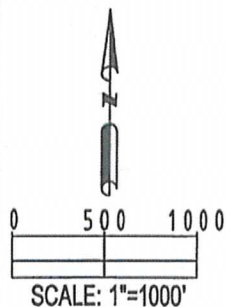
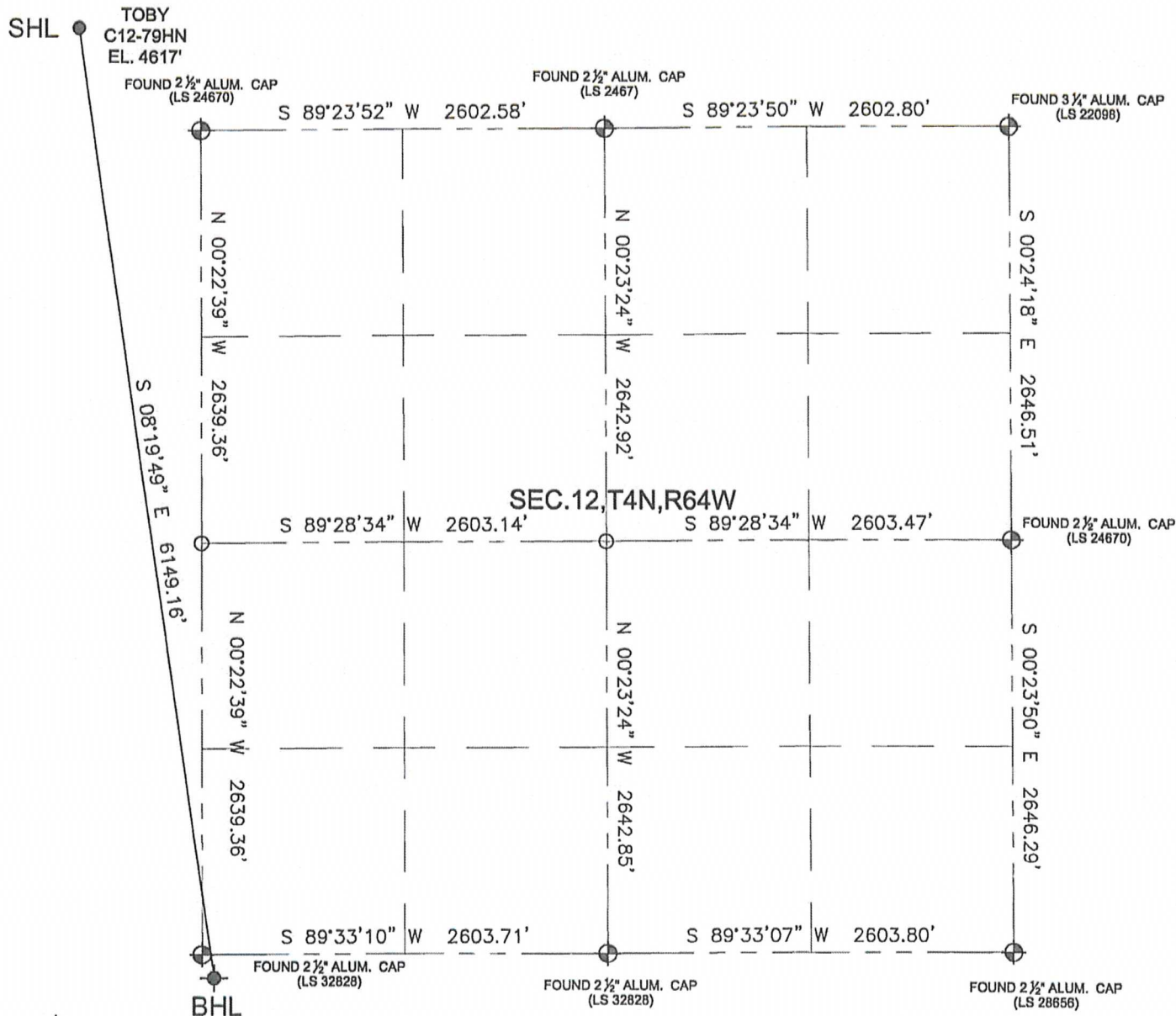


JERRY F. HARCEK JR., PLS 34997
COLORADO LICENSED PROFESSIONAL LAND SURVEYOR
FOR AND ON BEHALF OF P.F.S., LLC

WELL LOCATION CERTIFICATE

THIS MAP DOES NOT REPRESENT A BOUNDARY SURVEY

SECTION: 12
TOWNSHIP: 4N
RANGE: 64W



Note:
According to Colorado law, you must commence any legal action based upon any defect in this W.L.C. within three years after you first discover such defect. In no event, may any action based upon any defect in this survey be commenced more than ten years after the date of this certification shown hereon. (13-80-105 C.R.S.)

LEGEND

- ⊕ = FOUND MONUMENT
- = PROPOSED WELL
- ⊙ = BOTTOM HOLE
- ◆ = EXISTING WELL

SHEET 3 OF 4

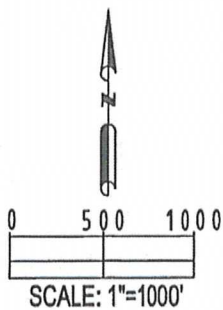
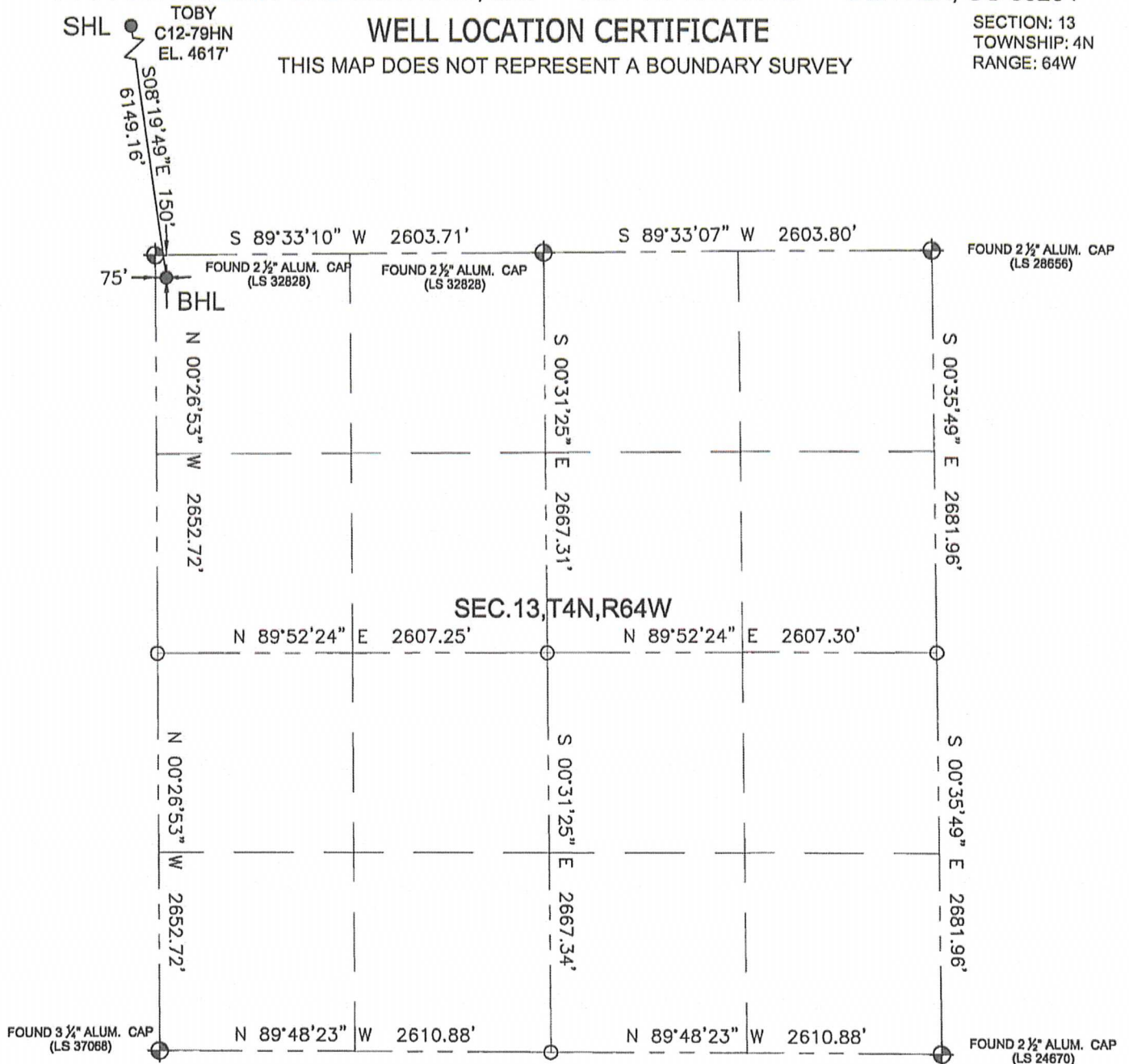


JERRY F. HARCEK JR., PLS 34997
COLORADO LICENSED PROFESSIONAL LAND SURVEYOR
FOR AND ON BEHALF OF P.F.S., LLC

WELL LOCATION CERTIFICATE

THIS MAP DOES NOT REPRESENT A BOUNDARY SURVEY

SECTION: 13
TOWNSHIP: 4N
RANGE: 64W



Note:
According to Colorado law, you must commence any legal action based upon any defect in this W.L.C. within three years after you first discover such defect. In no event, may any action based upon any defect in this survey be commenced more than ten years after the date of this certification shown hereon. (13-80-105 C.R.S.)

LEGEND

- ⊕ = FOUND MONUMENT
- = PROPOSED WELL
- ⬮ = BOTTOM HOLE
- ◆ = EXISTING WELL

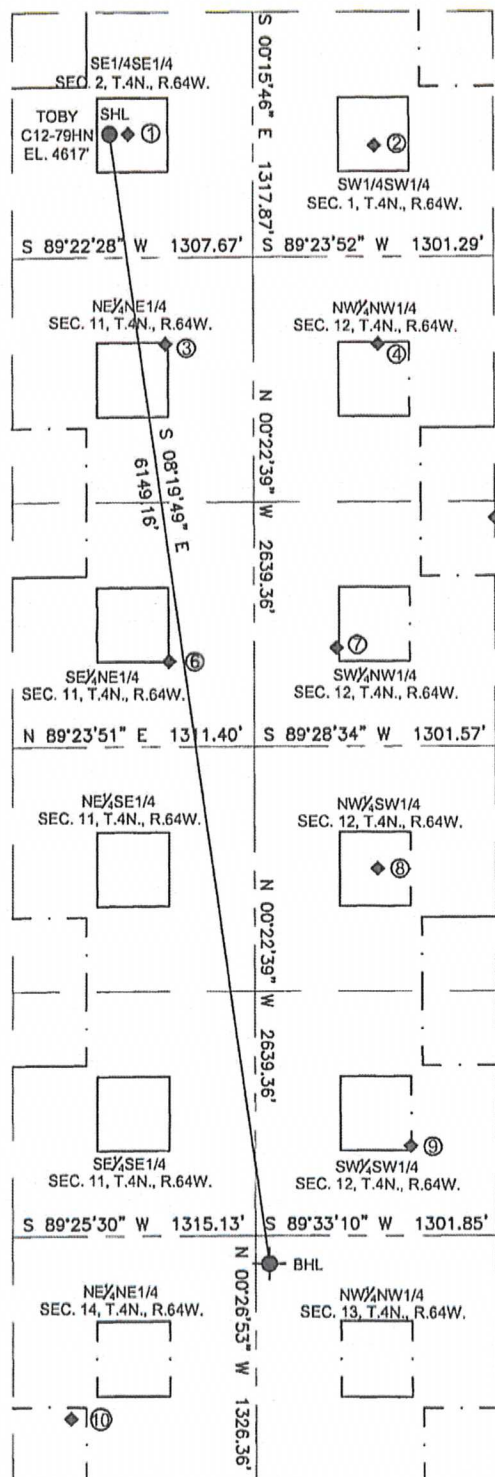
SHEET 4 OF 4



JERRY F. HARCEK JR., PLS 34997
COLORADO LICENSED PROFESSIONAL LAND SURVEYOR
FOR AND ON BEHALF OF P.F.S., LLC

SITE SKETCH

THIS MAP DOES NOT REPRESENT A BOUNDARY SURVEY

SECTION: 2
TOWNSHIP: 4N
RANGE: 64W

① ROTHE #3
SESE
665' FSL
710' FWL
LAT-40.33600°N
LONG-104.51078°W
PDOP:1.8
ELEV: 4617'

② MINOR #1
SWSW
599' FSL
657' FWL
LAT-40.33581°N
LONG-104.50588°W
PDOP:1.8
ELEV: 4613'

③ MILLAGE C #11-1
NENE
468' FNL
474' FEL
LAT-40.33289°N
LONG-104.50996°W
PDOP:1.8
ELEV: 4617'

④ MILLAGE C #12-4
NWNW
470' FNL
675' FWL
LAT-40.33288°N
LONG-104.50363°W
PDOP:1.8
ELEV: 4617'

⑤ MILLAGE C #12-19
SWNW
1408' FNL
1305' FWL
LAT-40.33031°N
LONG-104.50365°W
PDOP:1.8
ELEV: 4619'

⑥ MILLAGE C #11-8
SENE
2178' FNL
456' FEL
LAT-40.32820°N
LONG-104.50992°W
PDOP:1.8
ELEV: 4622'

⑦ MILLAGE #12-5
SWNW
2107' FNL
447' FWL
LAT-40.32839°N
LONG-104.50669°W
PDOP:1.8
ELEV: 4623'

⑧ WATKINS #12-2
NWSW
1982' FSL
666' FWL
LAT-40.32513°N
LONG-104.50593°W
PDOP:1.8
ELEV: 4625'

⑨ WATKINS #12-13
SWSW
486' FSL
840' FWL
LAT-40.32101°N
LONG-104.50532°W
PDOP:1.8
ELEV: 4629'

⑩ STINAR #14-2
NENE
983' FNL
998' FEL
LAT-40.31699°N
LONG-104.51193°W
PDOP:1.8
ELEV: 4635'

