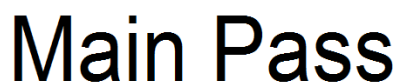




<<< Fold Here >>>
All interpretations are opinions based on inferences from electrical or other measurements and we cannot and do not guarantee the accuracy or correctness of any interpretation, and we shall not, except in the case of gross or willful negligence on our part, be liable or responsible for any loss, costs, damages, or expenses incurred or sustained by anyone resulting from any interpretation made by any of our officers, agents or employees. These interpretations are also subject to our general terms and conditions set out in our current Price Schedule.
Comments
Main Pass logged under 1000 PSI.

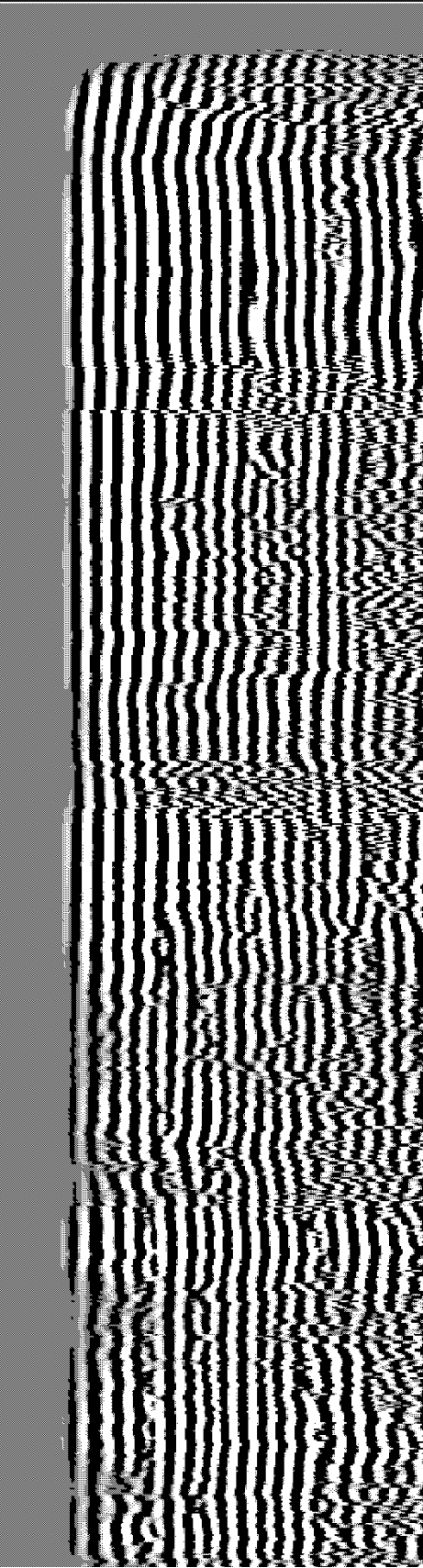
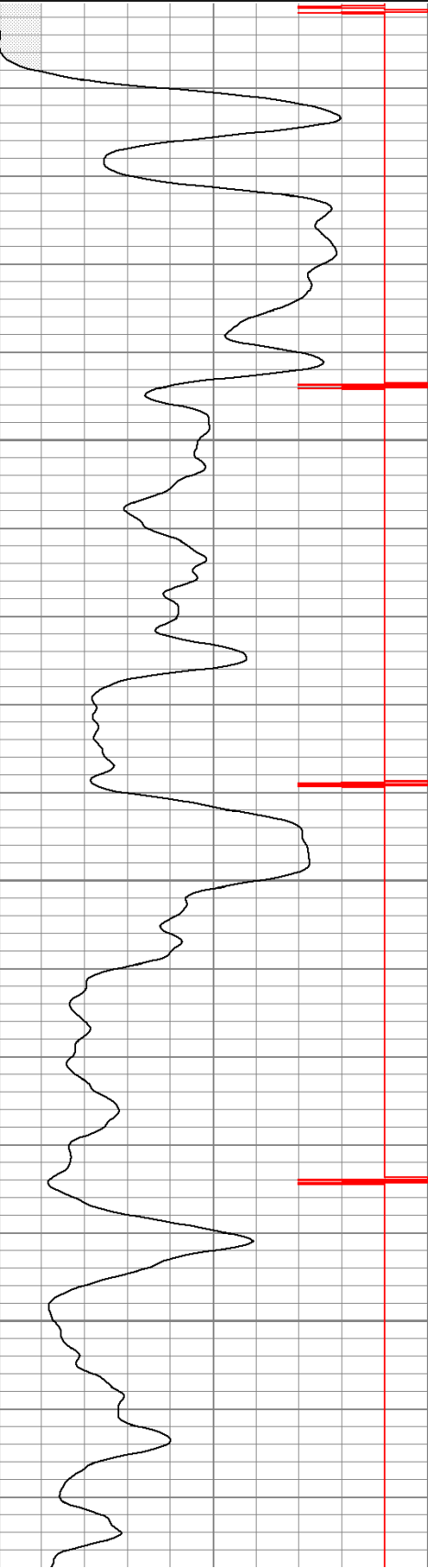
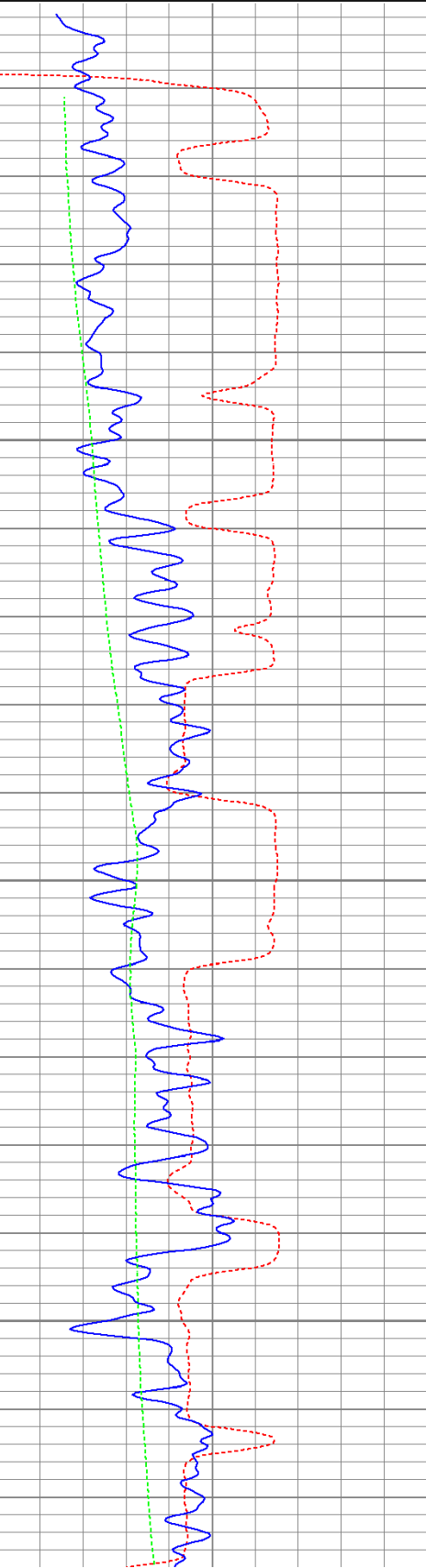


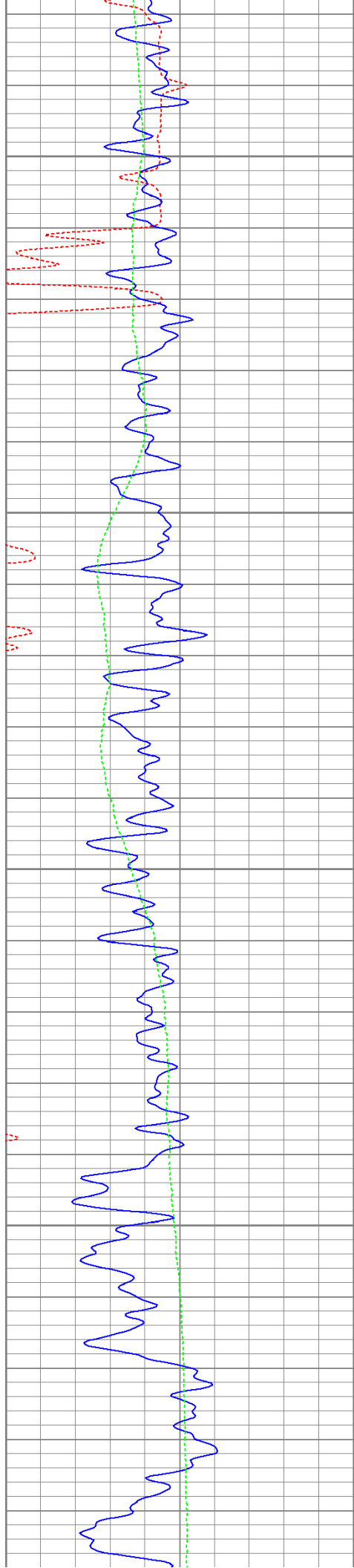
Database File: ac09-0271211b.db
Dataset Pathname: pass2.1
Presentation Format: cbldig
Dataset Creation: Tue Jul 12 18:47:44 2011 by Calc Open-Cased 110302
Charted by: Depth in Feet scaled 1:240

400	Travel Time (usec)	200
0	GR (GAPI)	200
0	DEVI (°)	10

0	Amplitude (mV)	100
9	Collar Locator	-1

200 Variable Density 1200



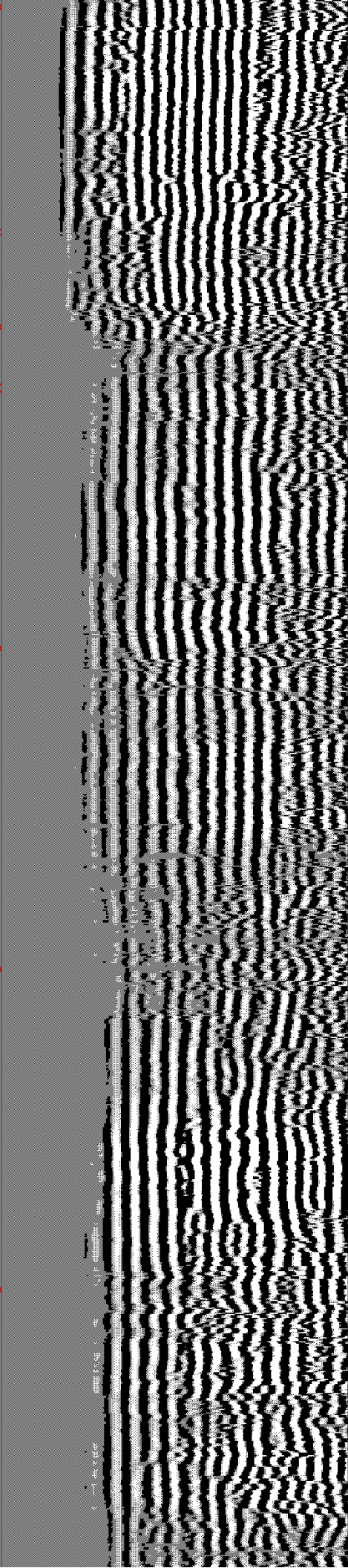
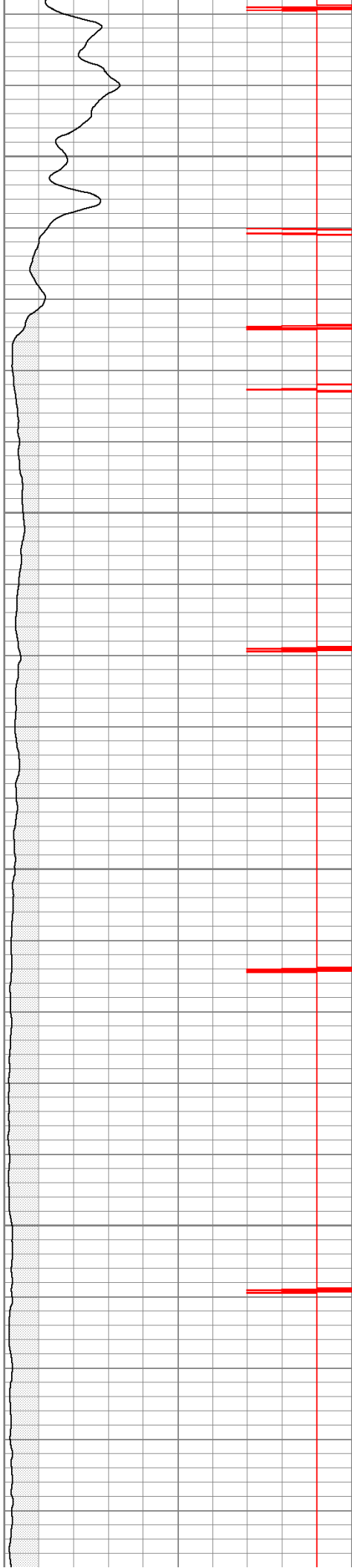


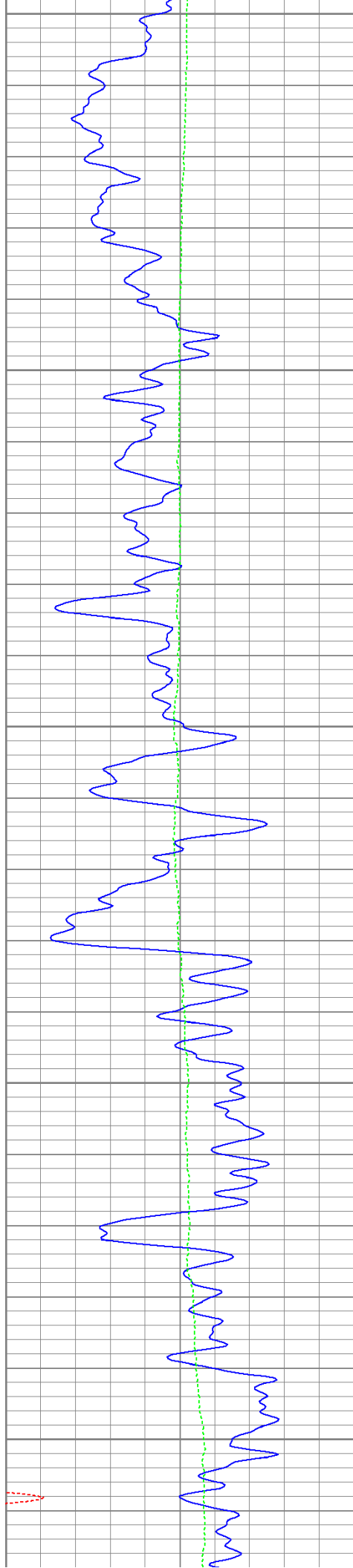
200

250

300

350





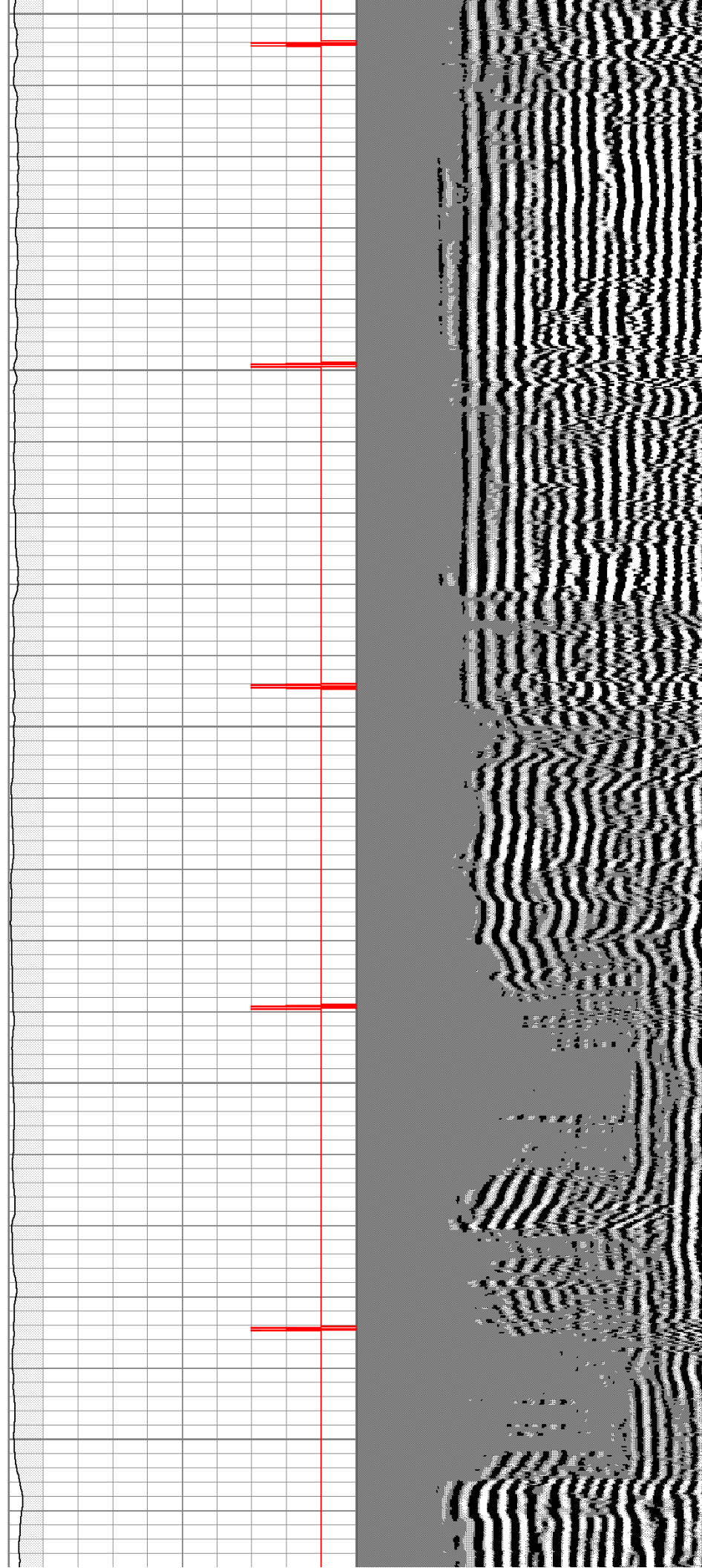
400

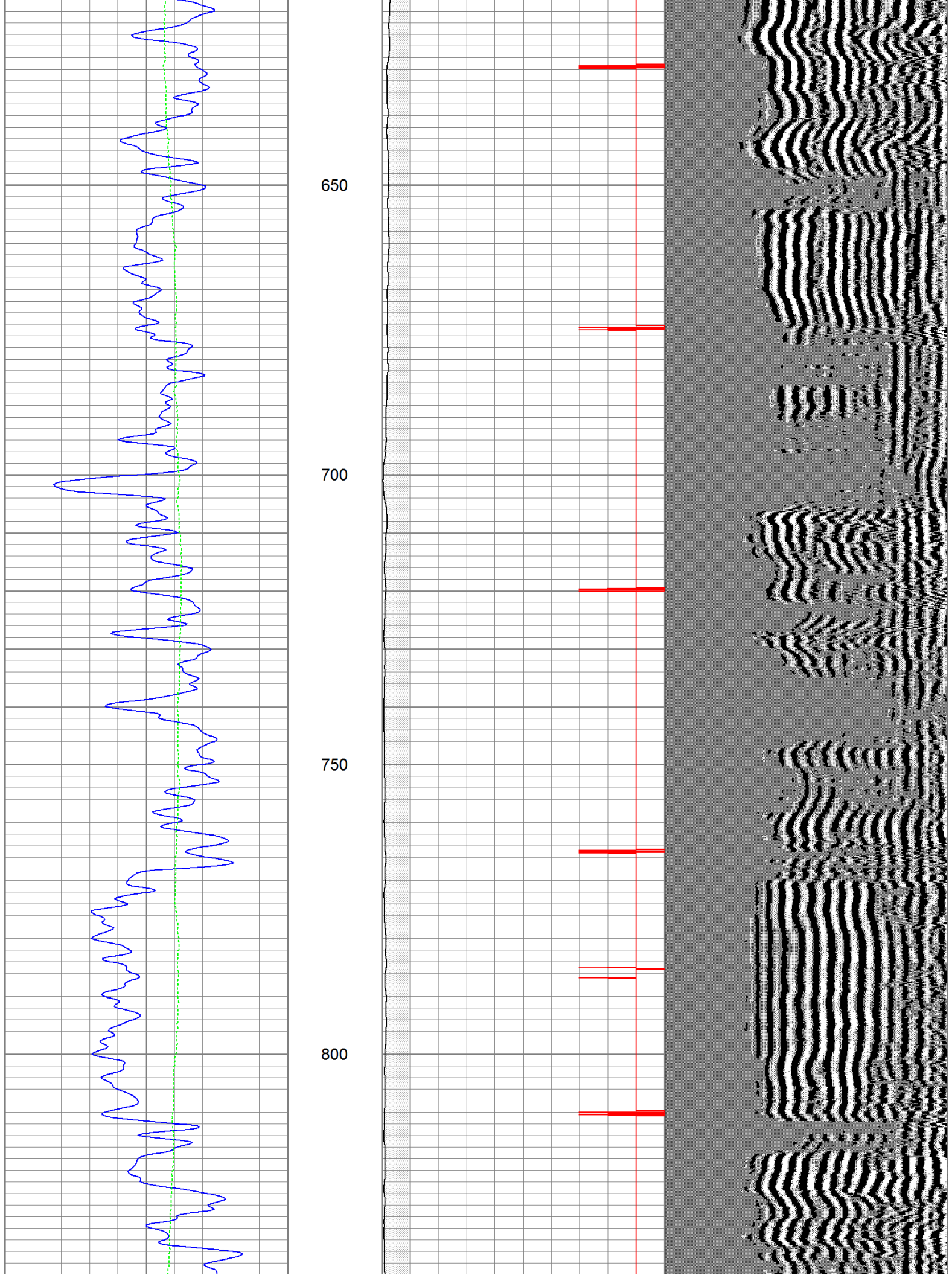
450

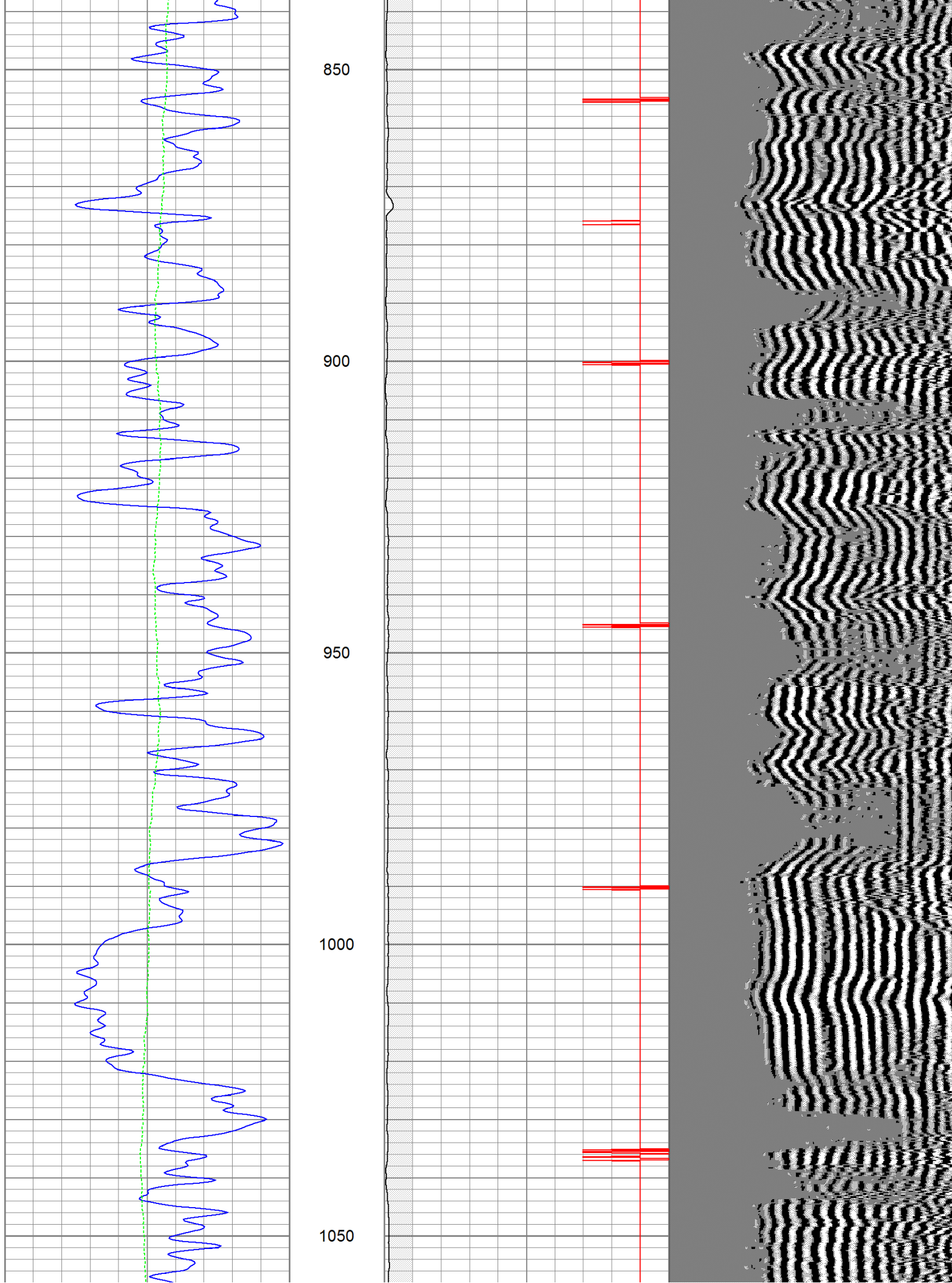
500

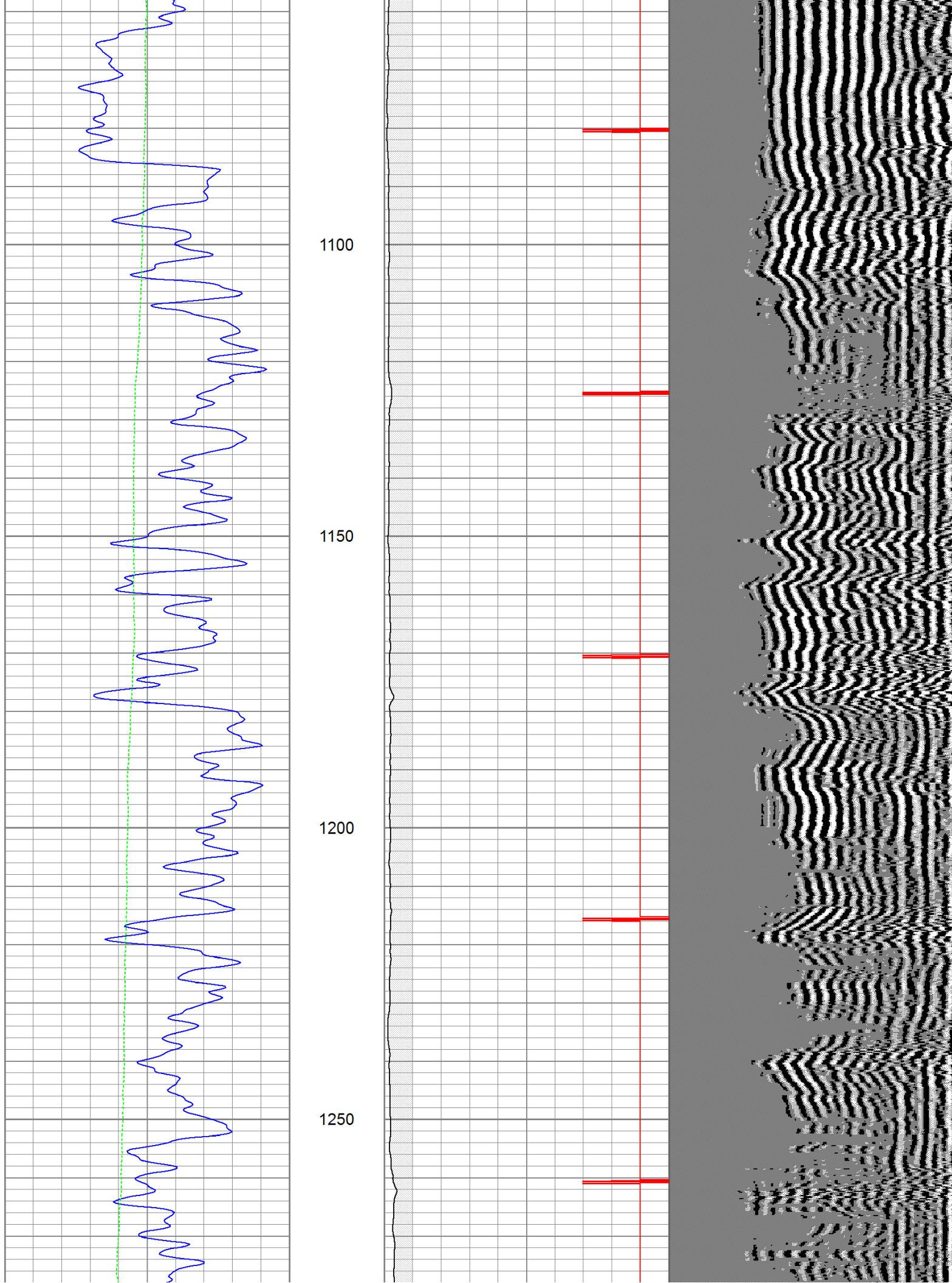
550

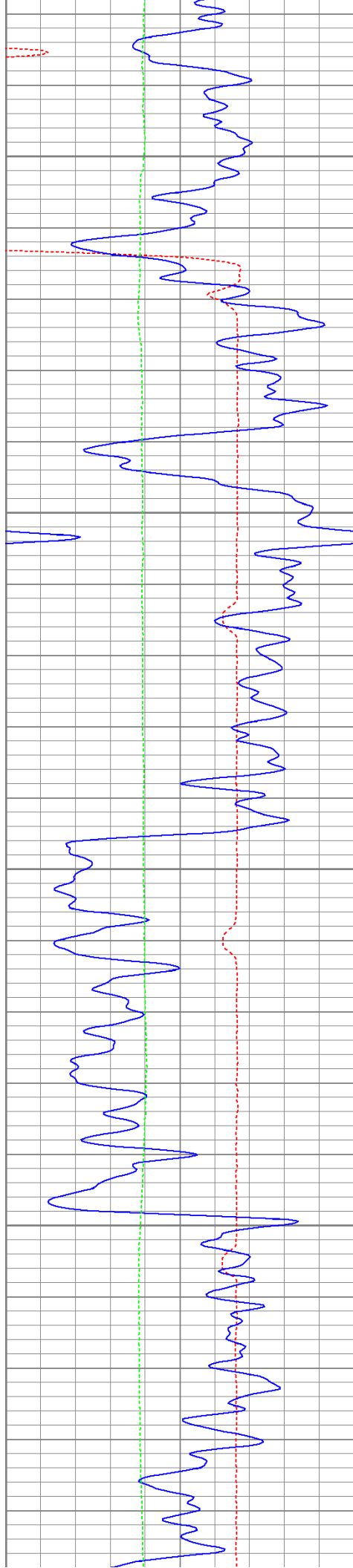
600











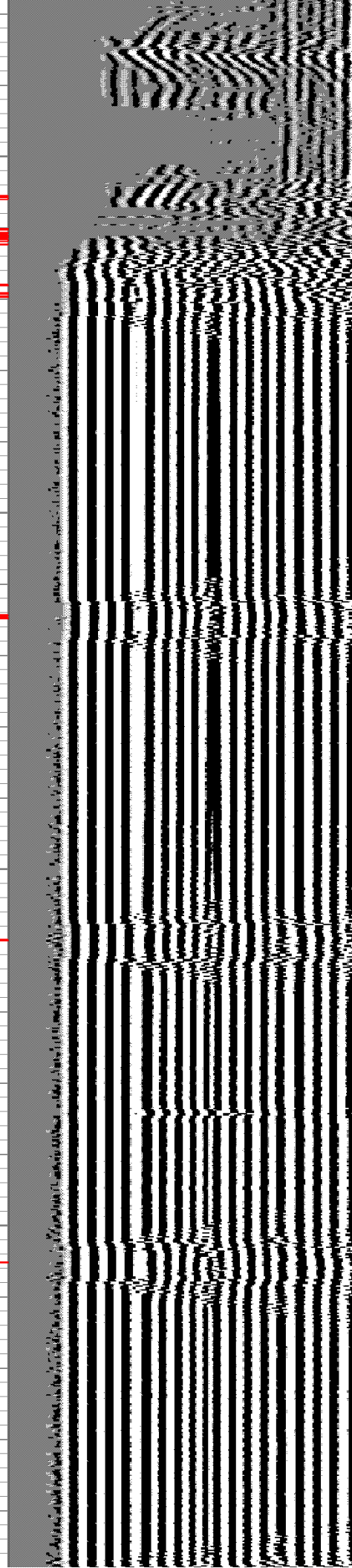
1300

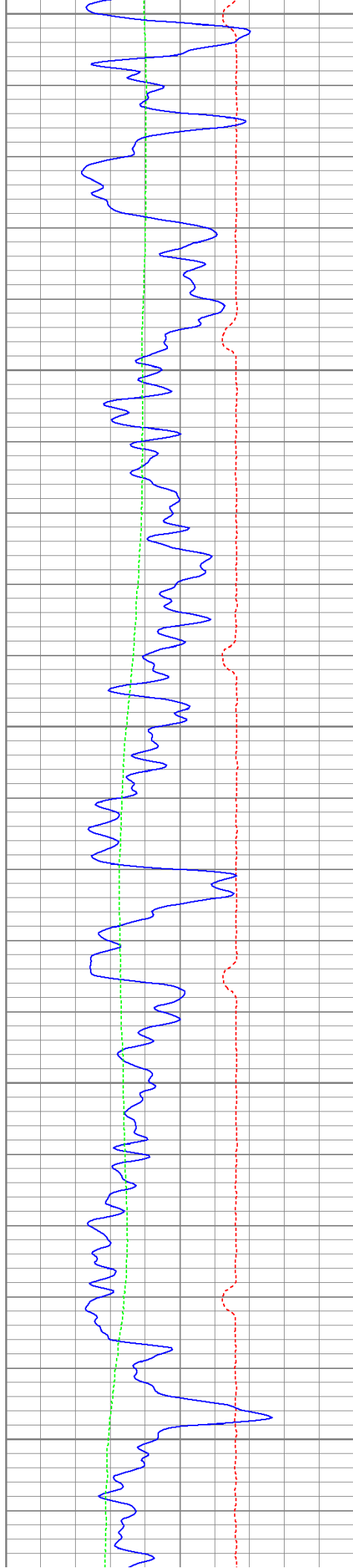
1350

1400

1450

ECP →





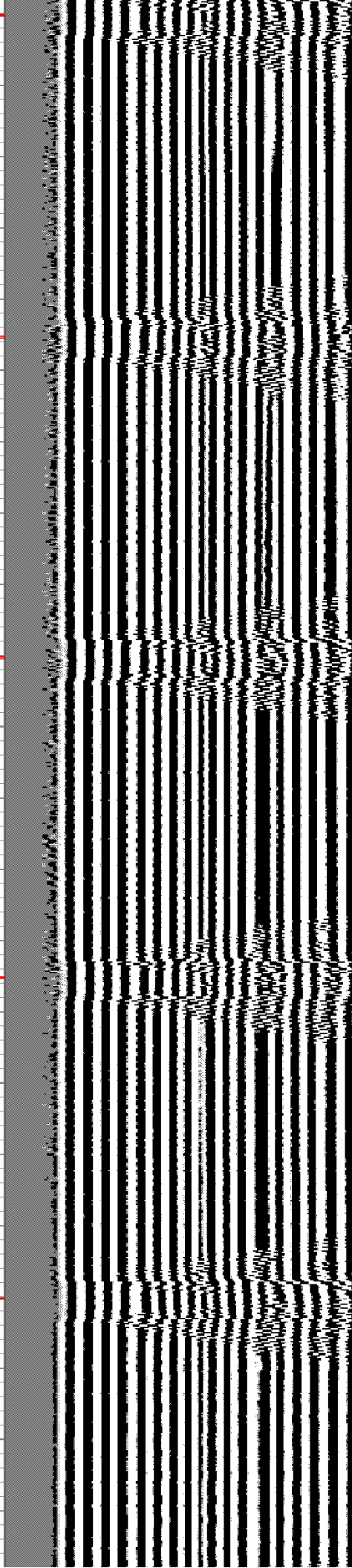
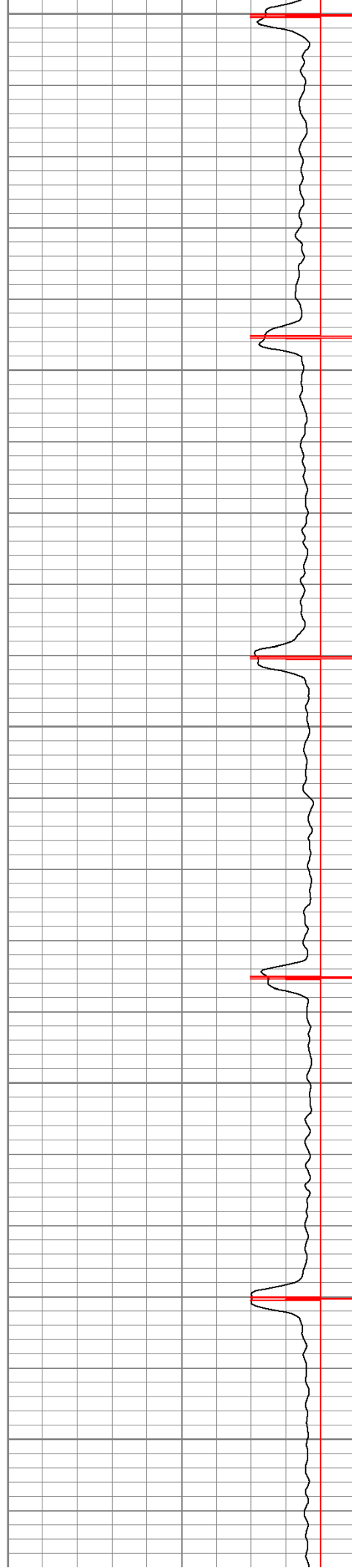
1500

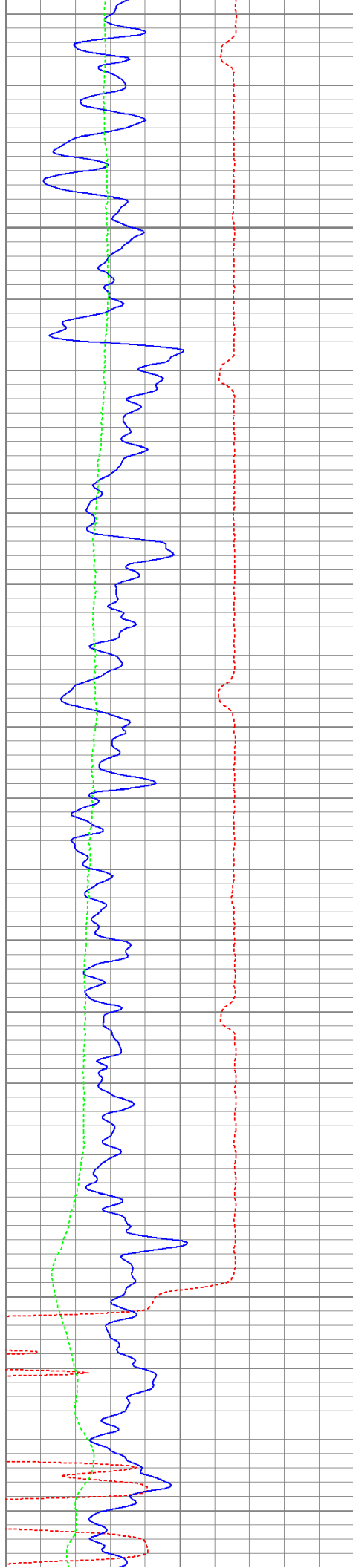
1550

1600

1650

1700





1750

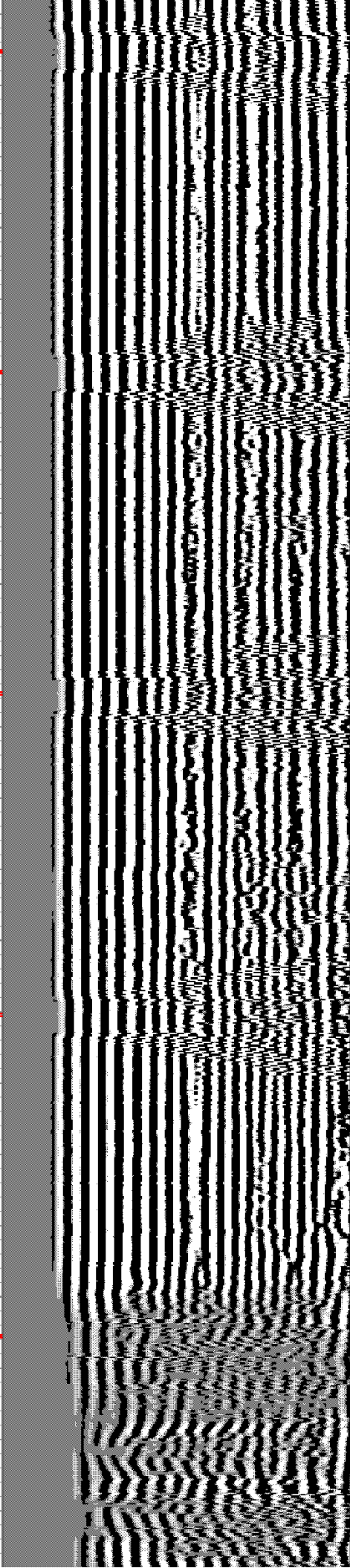
1800

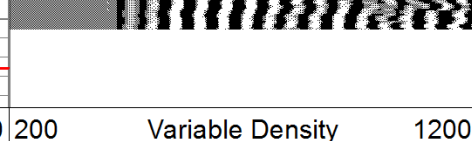
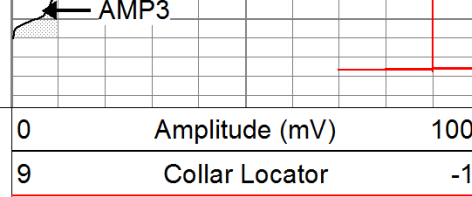
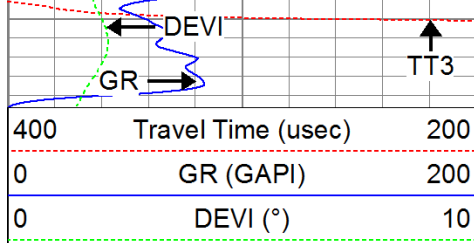
1850

1900



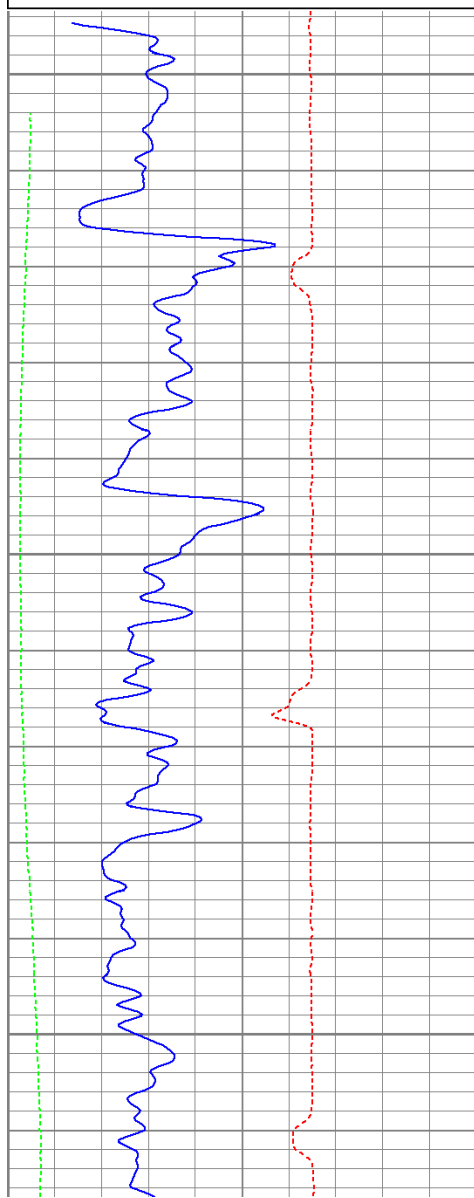
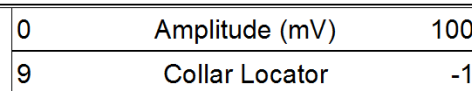
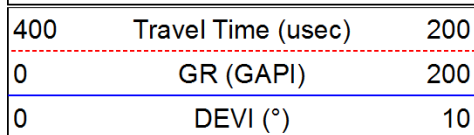
↑
CCL





Repeat Pass

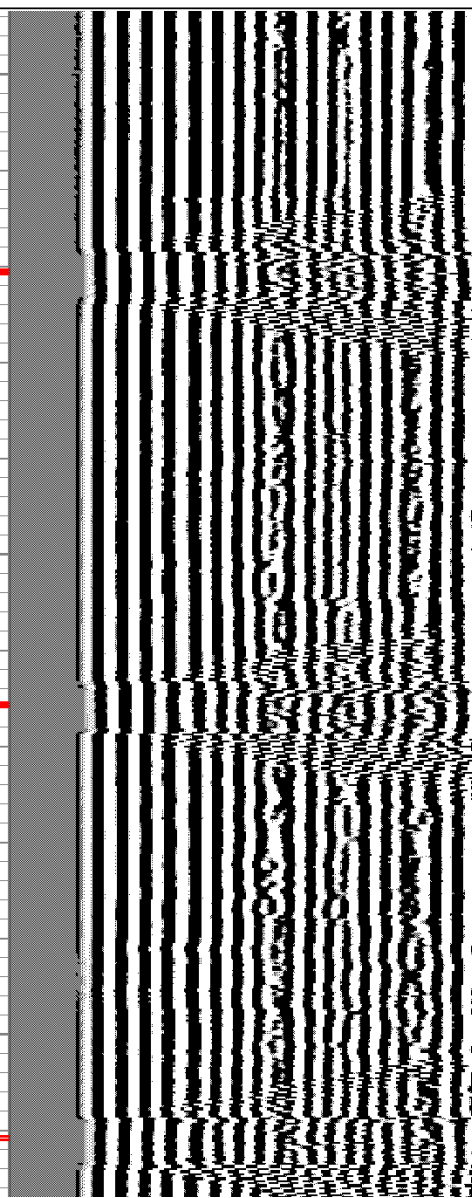
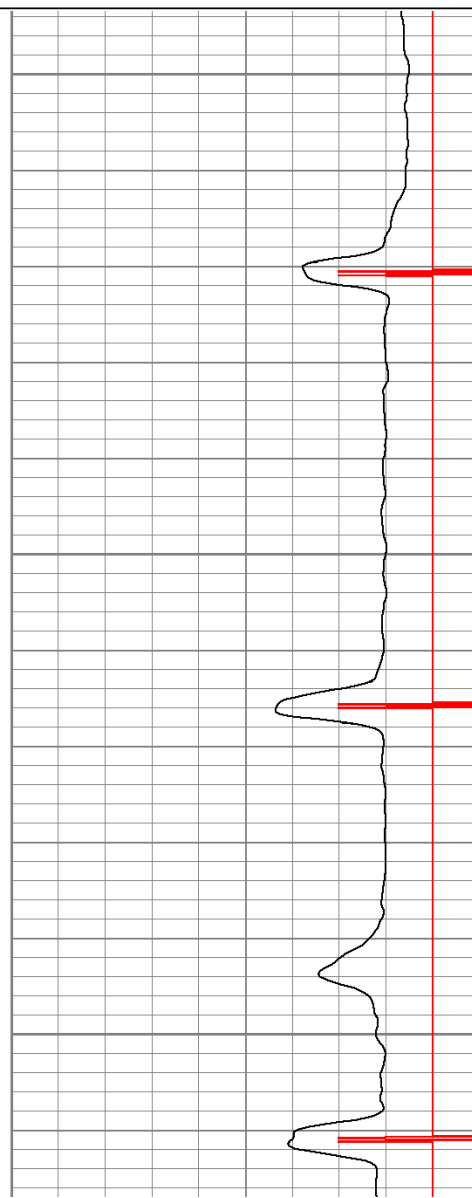
Database File: ac09-0271211b.db
 Dataset Pathname: pass1
 Presentation Format: cbldig
 Dataset Creation: Tue Jul 12 18:06:34 2011 by Log Open-Cased 110302
 Charted by: Depth in Feet scaled 1:240

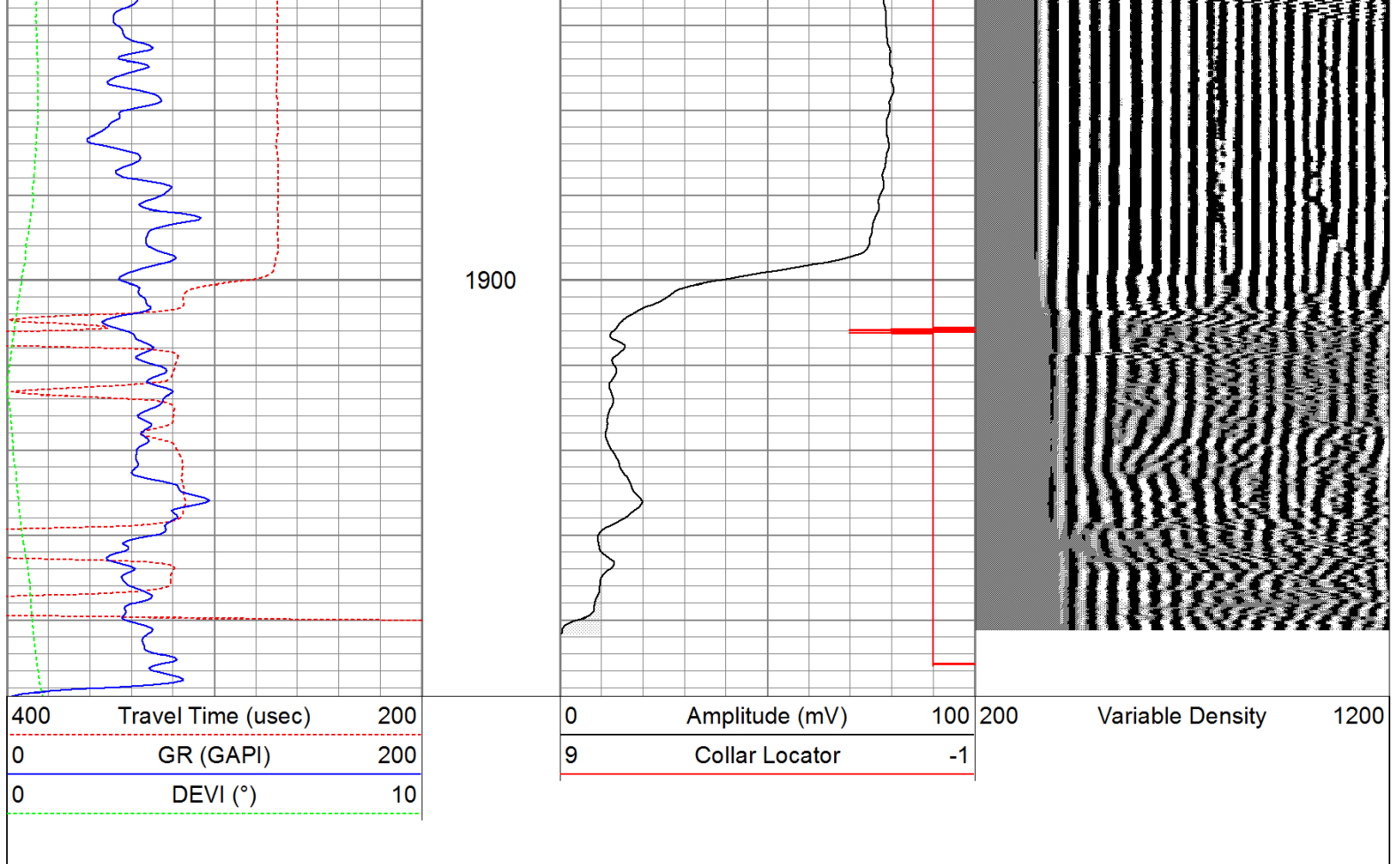


1750

1800

1850





Calibration Report					
Database File:	ac09-0271211b.db				
Dataset Pathname:	pass1				
Dataset Creation:	Tue Jul 12 18:06:34 2011 by Log Open-Cased 110302				
Gamma Ray Calibration Report					
Serial Number:	080616				
Tool Model:	275D_INC				
Performed:	Wed May 04 17:31:09 2011				
Calibrator Value:	200.0	GAPI			
Background Reading:	50.0	cps			
Calibrator Reading:	250.0	cps			
Sensitivity:	1.0000	GAPI/cps			
Inclinometer Calibration Report					
Performed:	Wed May 04 17:39:54 2011				
	Low Read.	High Read.	Low Ref.	High Ref.	
X Accelerometer	-3585.20	3595.40	-1.00	1.00	gee
Y Accelerometer	-3619.40	3520.00	-1.00	1.00	gee
Z Accelerometer					
Cement Bond Log Calibration Report					
Serial Number:	081024				

PROBEDIGITALCBL
Sat Jul 09 20:17:28 2011

Depth:
Casing Diameter:

79.0748 ft
5.5 in

3' Spacing

5' Spacing

Signal Zero:
Calibrated Amplitude:
Reading at Signal Zero:
Reading in Free Pipe:

0	0
85	85
-0.0115234	-0.0109863
1.793	1.18887

mV
mV
V
V

Gain:
Offset:

47.1039	70.842
0.542797	0.778293

[illegible]