

Company XTO Energy Inc.		Company XTO Energy Inc.	
Well Apache Canyon 09-08		Well Apache Canyon 09-08	
Field Purgatorie River		Field Purgatorie River	
County Las Animas		County Las Animas	
State Colorado		State Colorado	
Location:		API # : 05-071-09692-00	
SEC 9 TWP 34S RGE 67W		1925' FNL & 753' FEL	
Permanent Datum GL		Elevation 7655'	
Log Measured From G.L.		Other Services	
Drilling Measured From G.L.		DEVI	
Date		7-13-11	
Run Number	one		
Depth Driller	2210'		
Depth Logger	2132'		
Bottom Logged Interval	2130'		
Top Log Interval	Surface		
Open Hole Size	7 7/8		
Type Fluid	water		
Density / Viscosity	///		
Max. Recorded Temp.	///		
Estimated Cement Top	34'		
Time Well Ready	3:00 P.M.		
Time Logger on Bottom	3:30 P.M.		
Equipment Number	T590		
Location	Trinidad		
Recorded By	C. Sineros		
Witnessed By	E. Haught		
Borehole Record		Tubing Record	
Run Number	Bit	From	To
Casing Record	Size	Wgt/Ft	Top
Surface String	8 5/8"		Bottom
Prot. String			538'
Production String	5 1/5"		
Liner			TD

<<< Fold Here >>>

All interpretations are opinions based on inferences from electrical or other measurements and we cannot and do not guarantee the accuracy or correctness of any interpretation, and we shall not, except in the case of gross or willful negligence on our part, be liable or responsible for any loss, costs, damages, or expenses incurred or sustained by anyone resulting from any interpretation made by any of our officers, agents or employees. These interpretations are also subject to our general terms and conditions set out in our current Price Schedule.

Comments

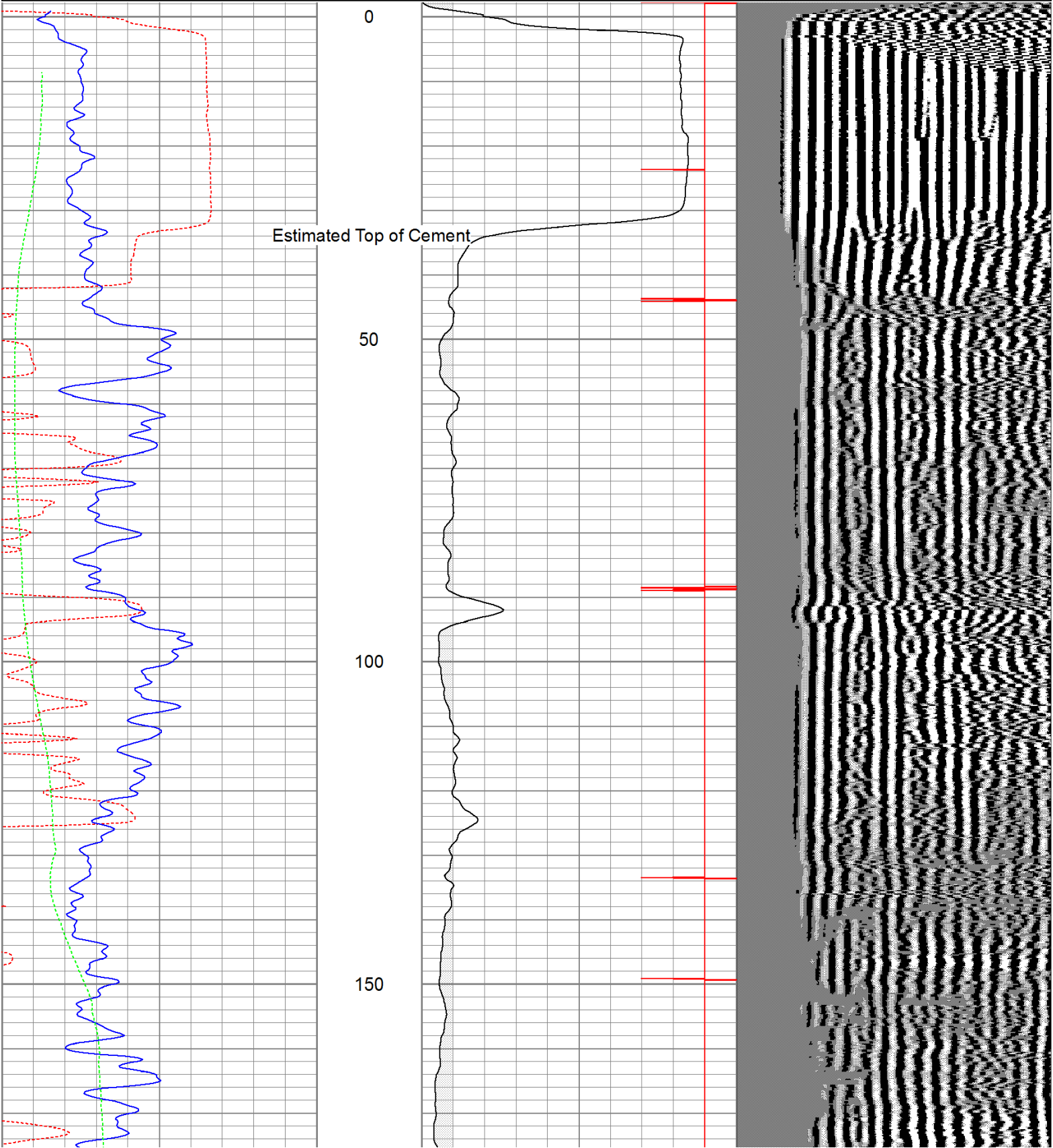
Main Pass logged under 1000 PSI.

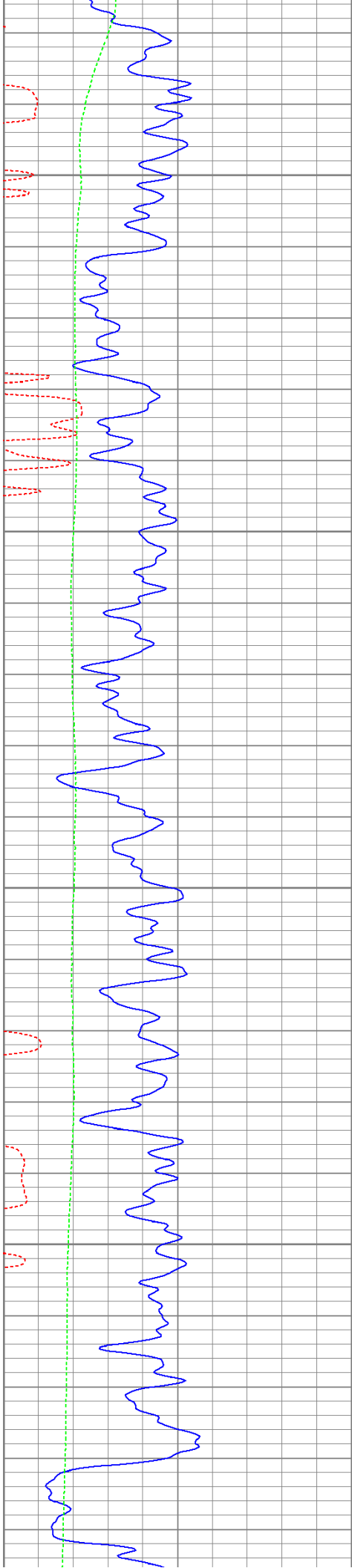
Database File: ac09-0871311b.db
Dataset Pathname: pass2
Presentation Format: cbldig
Dataset Creation: Wed Jul 13 15:57:10 2011 by Log Open-Cased 110302
Charted by: Depth in Feet scaled 1:240

400	Travel Time (usec)	200
0	GR (GAPI)	200
0	DEVI (°)	10

0	Amplitude (mV)	100
9	Collar Locator	-1

200 Variable Density 1200



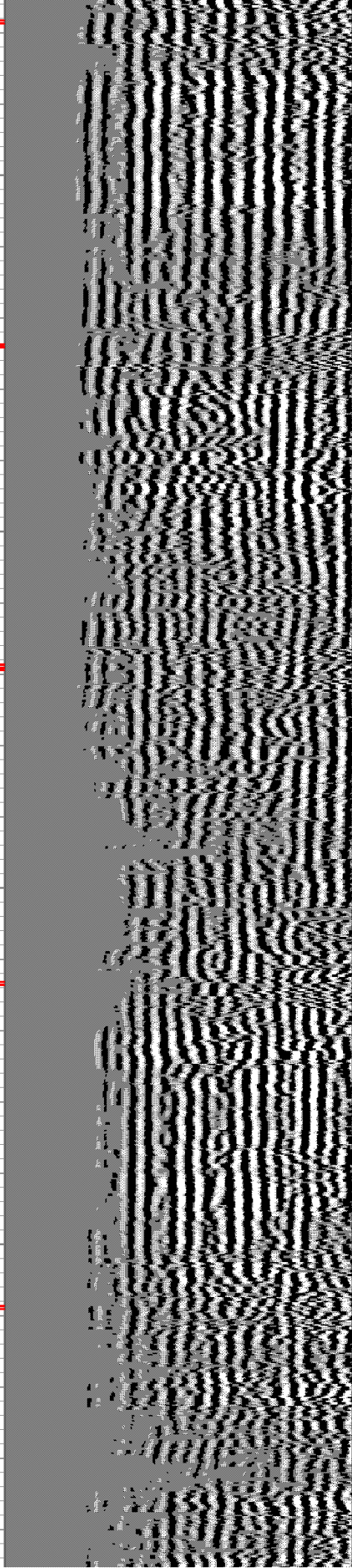
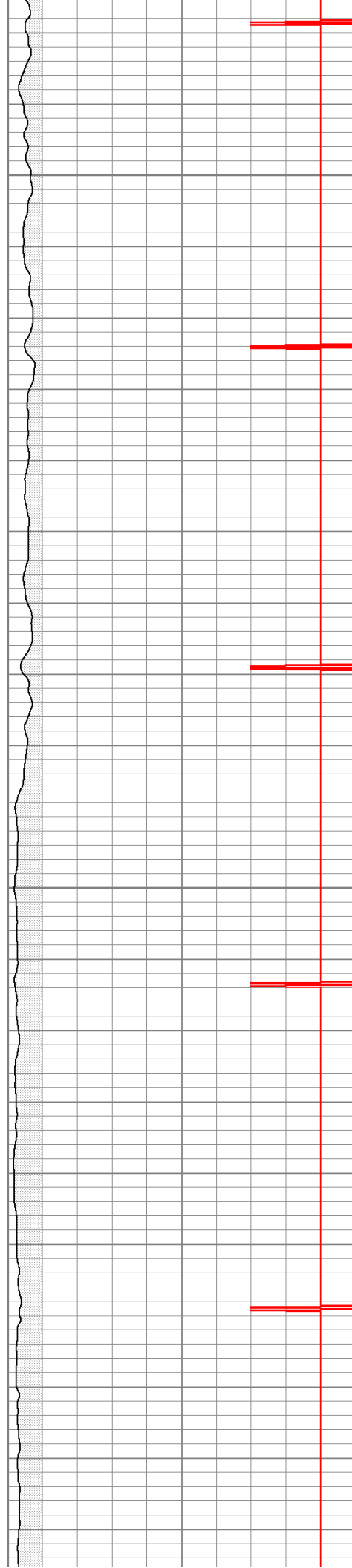


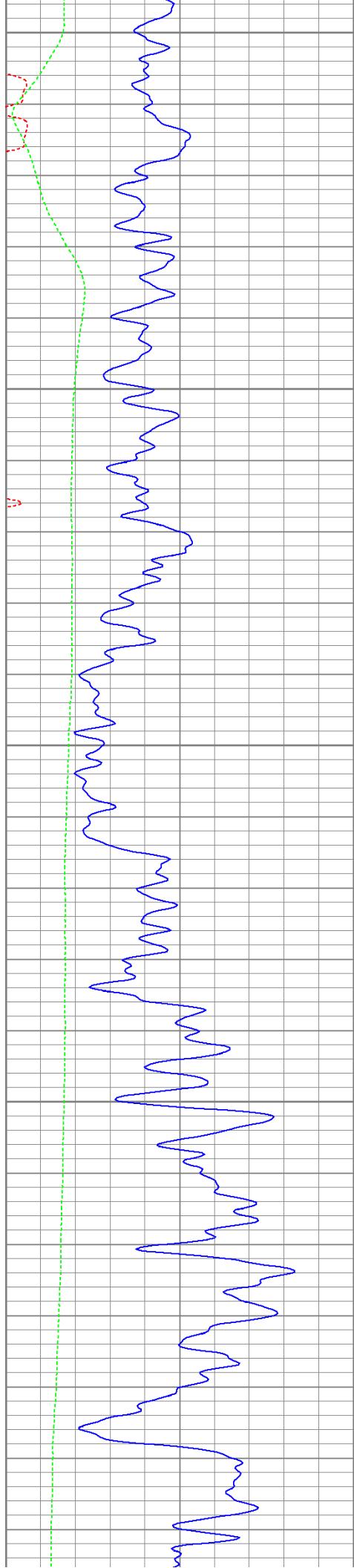
200

250

300

350





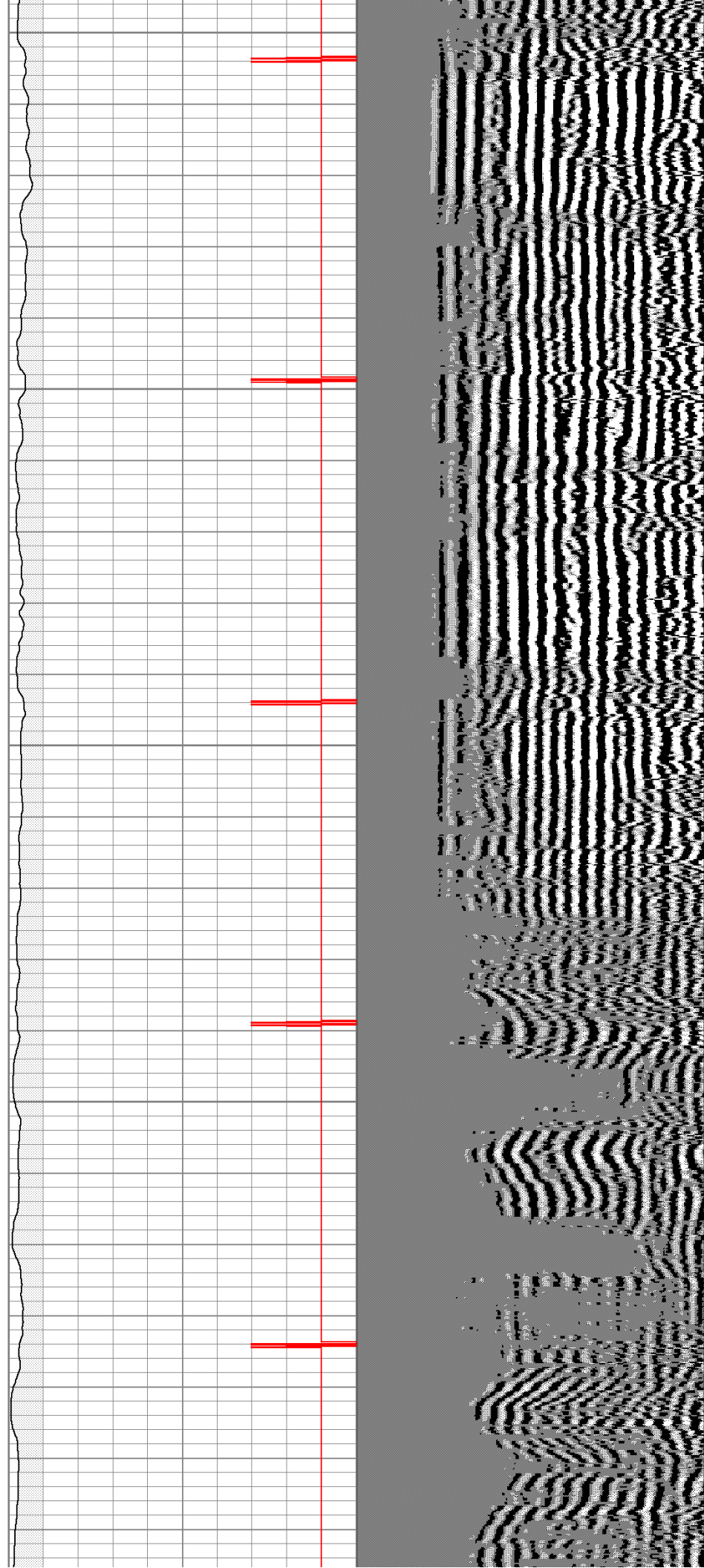
400

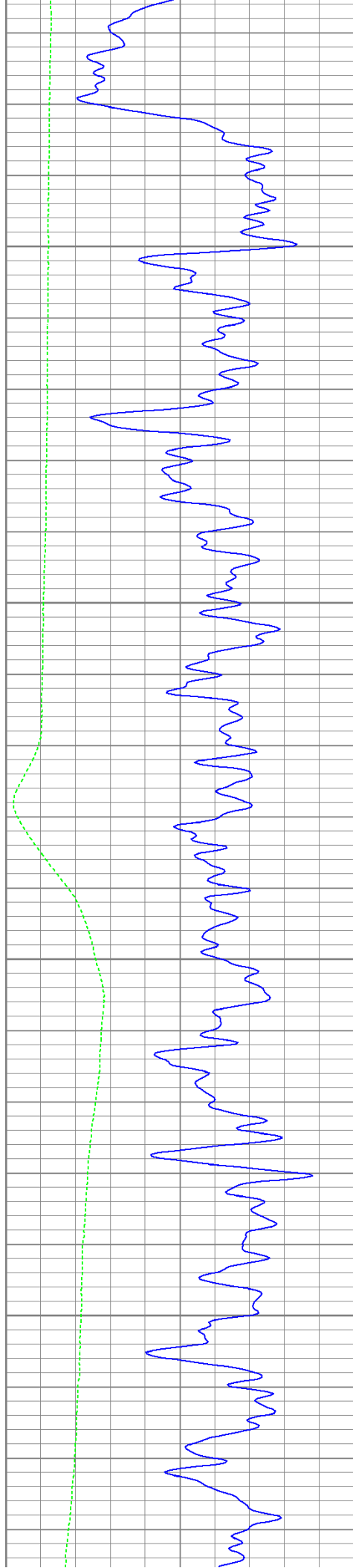
450

500

550

600



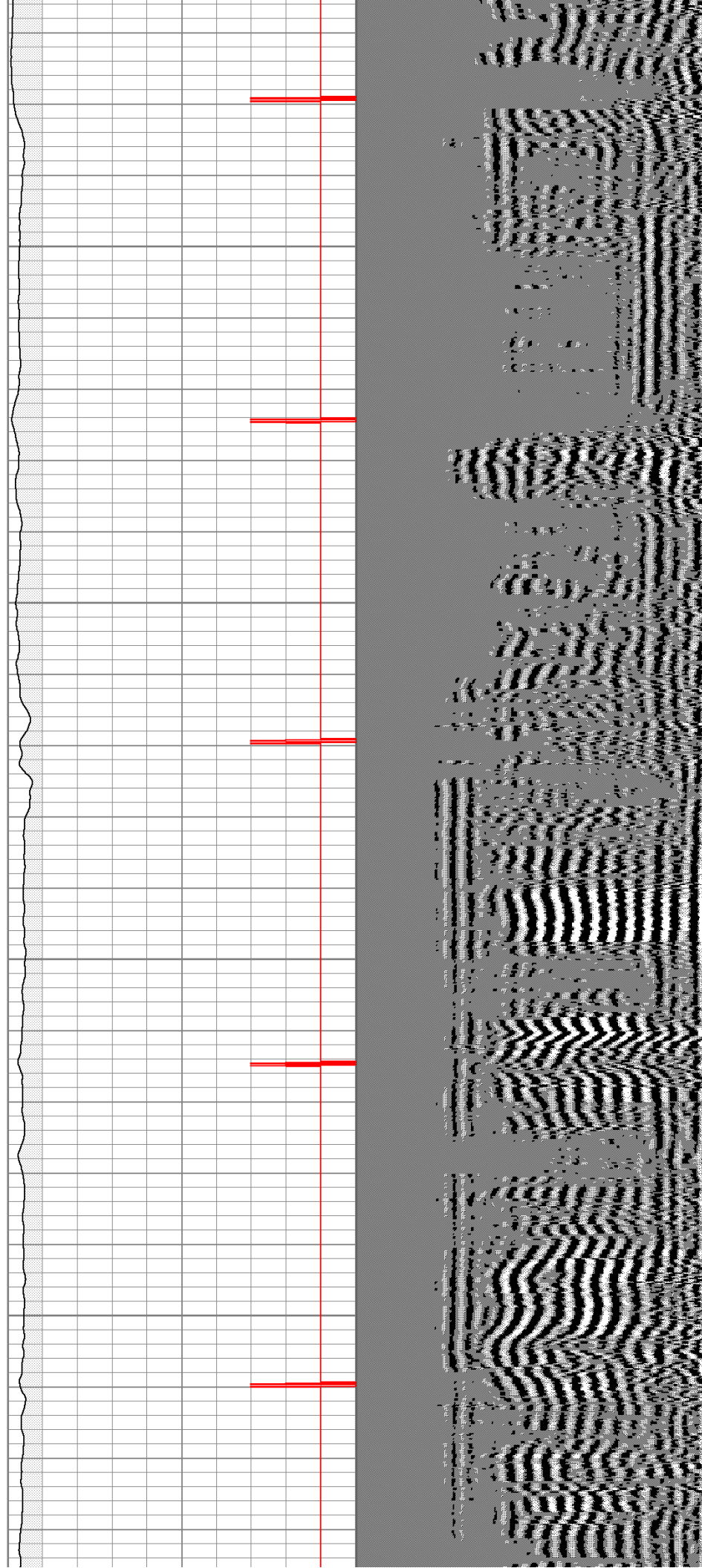


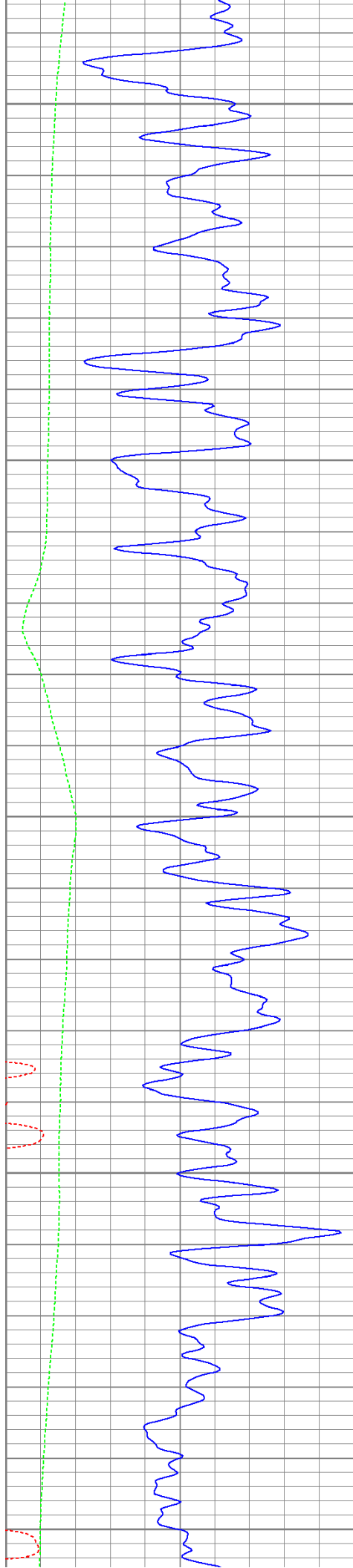
650

700

750

800





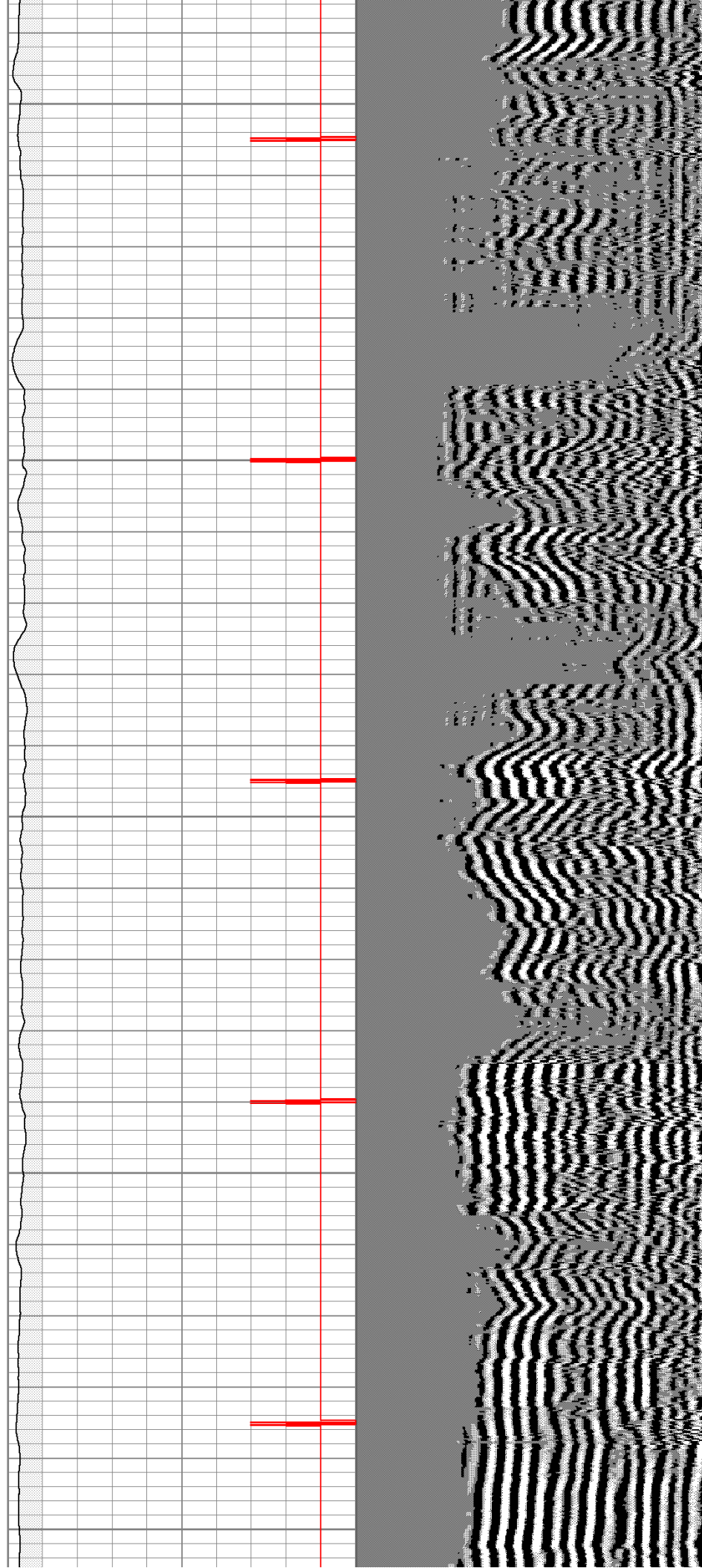
850

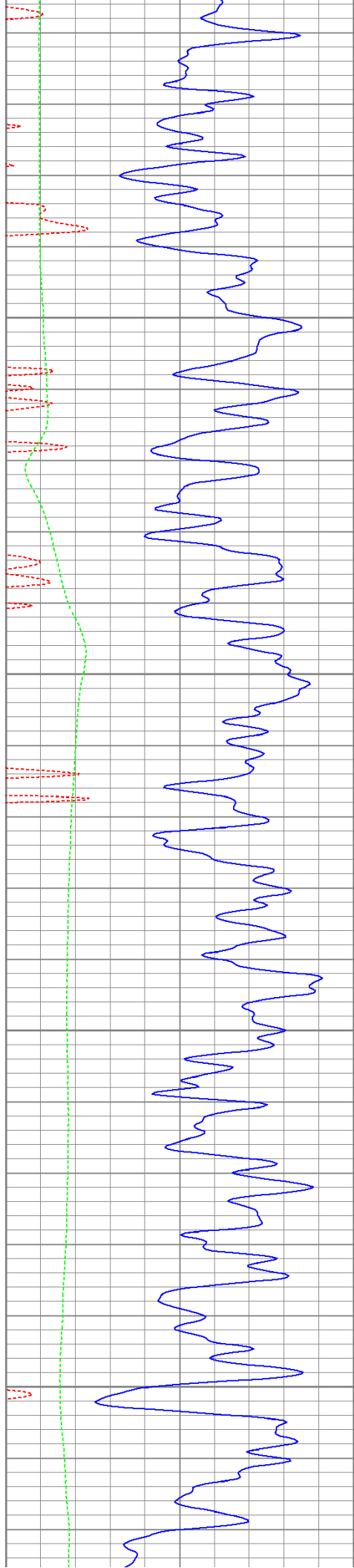
900

950

1000

1050



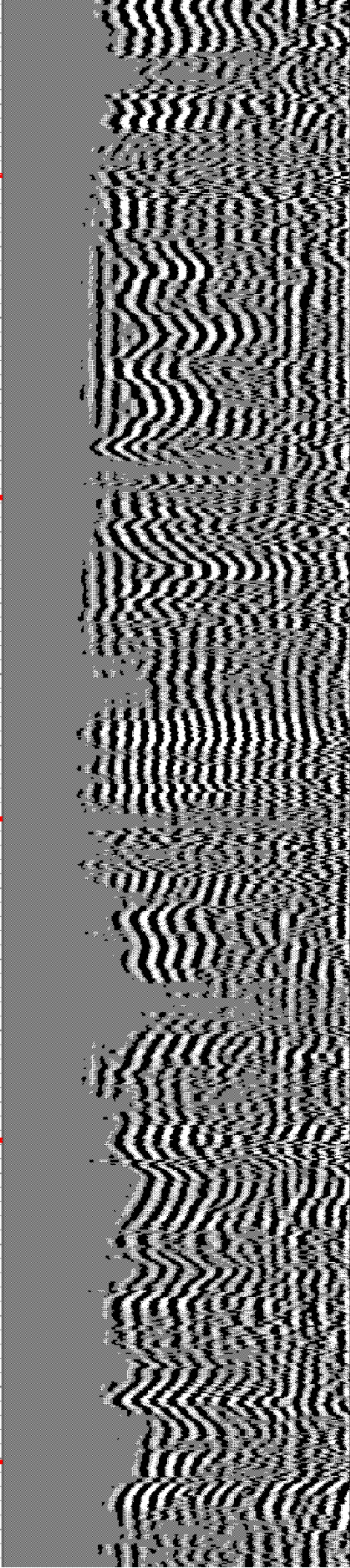
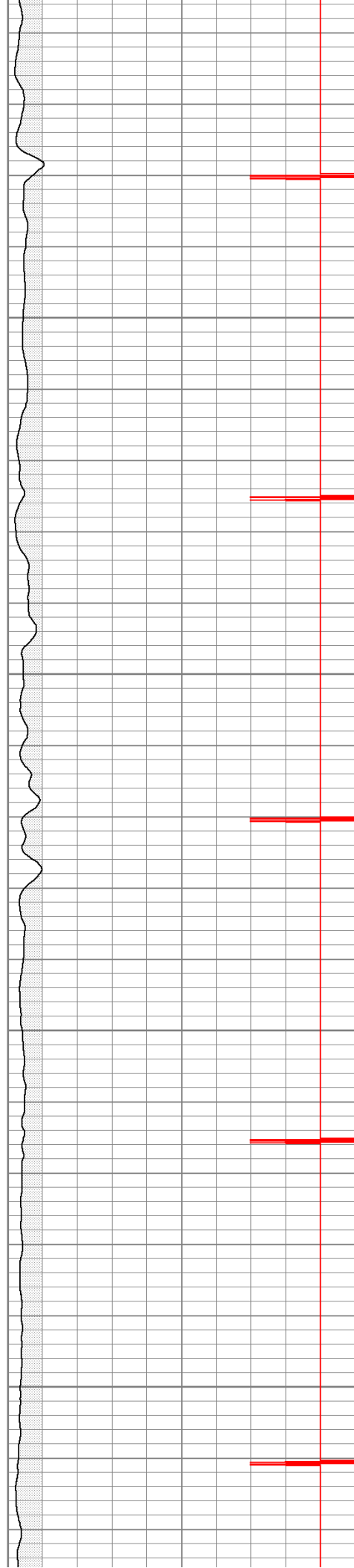


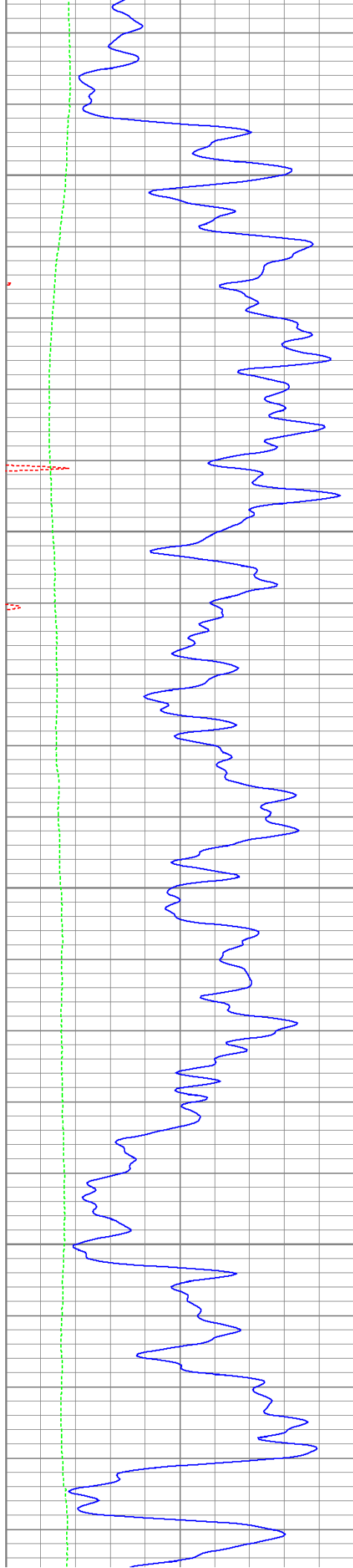
1100

1150

1200

1250





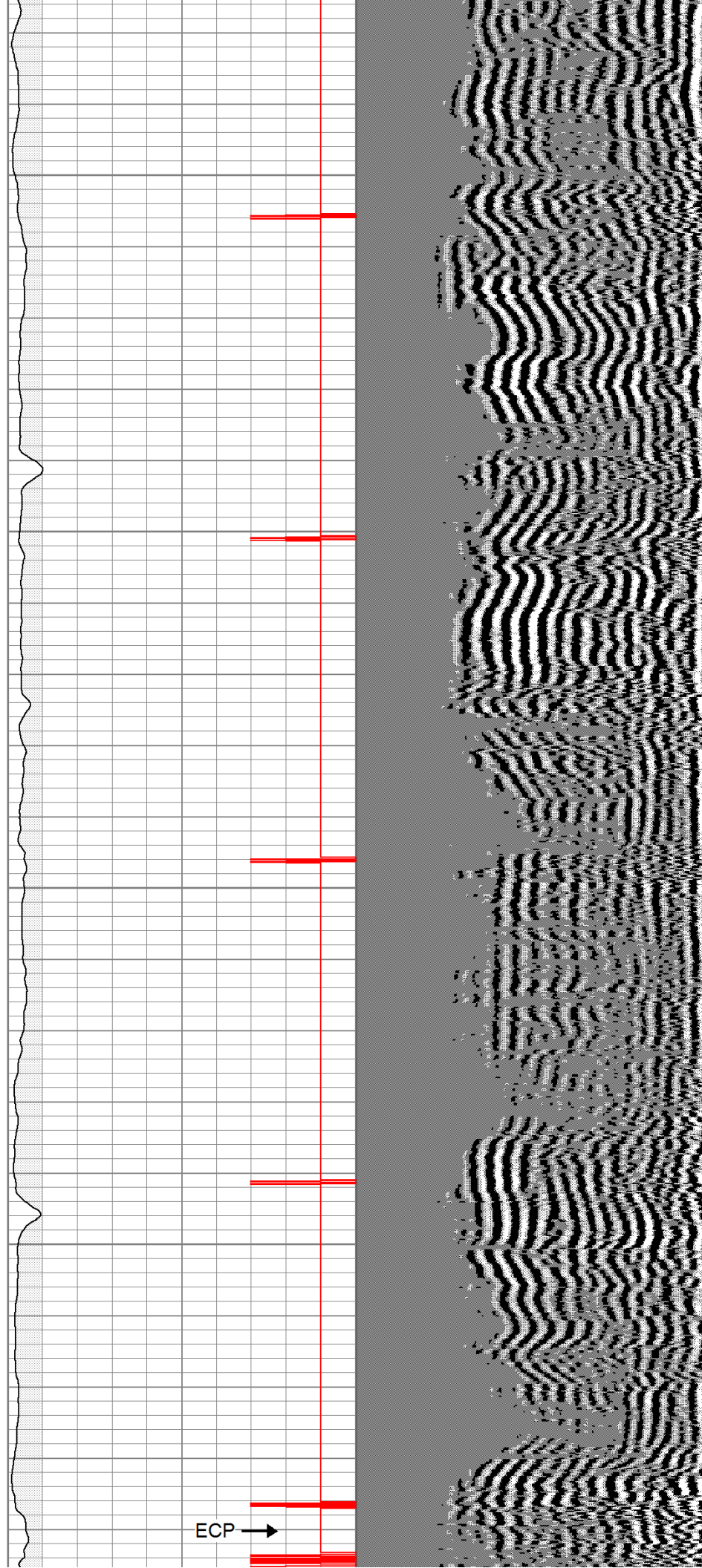
1300

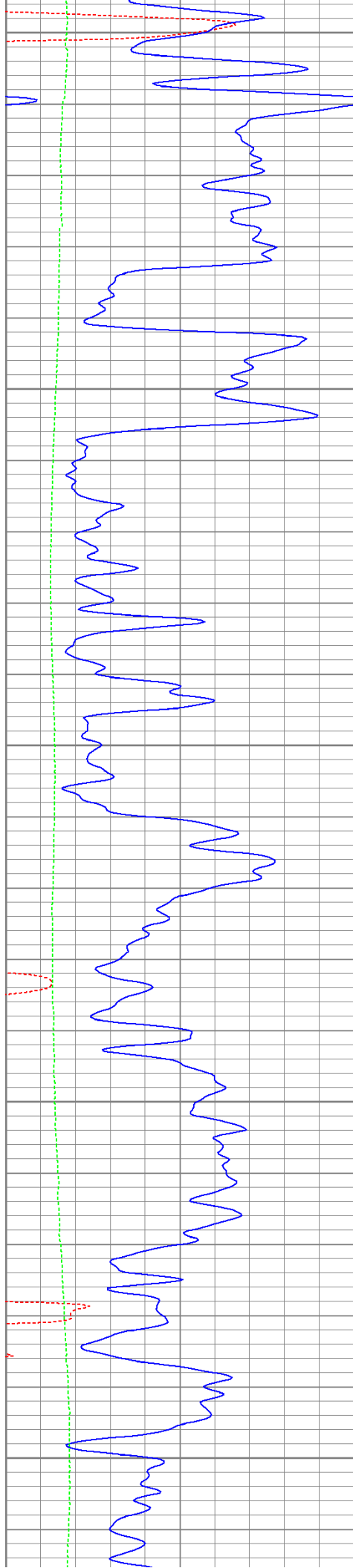
1350

1400

1450

ECP →





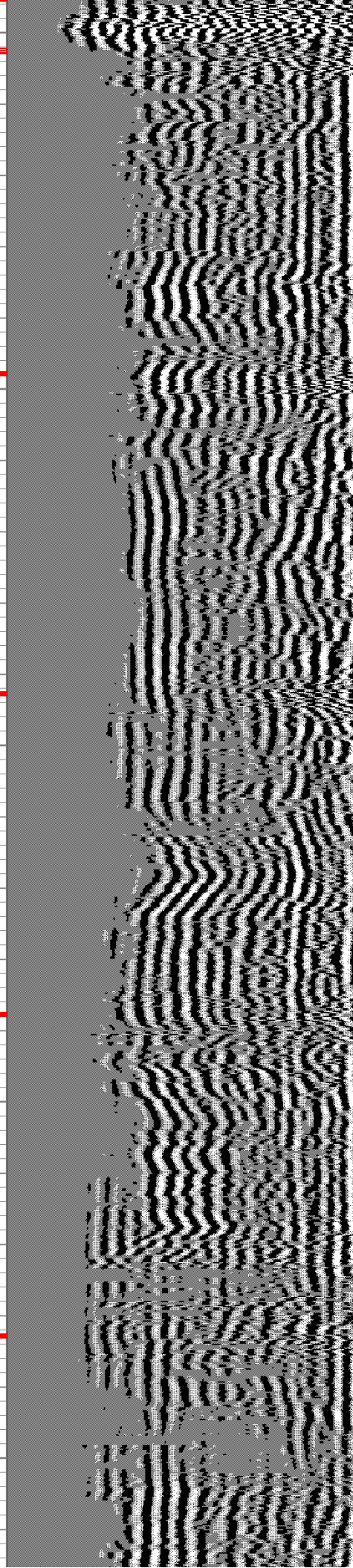
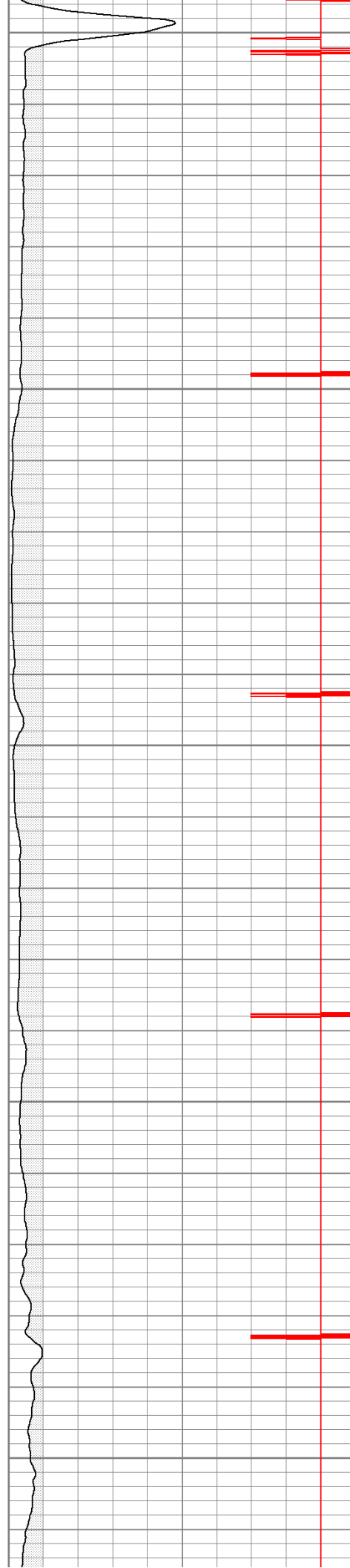
1500

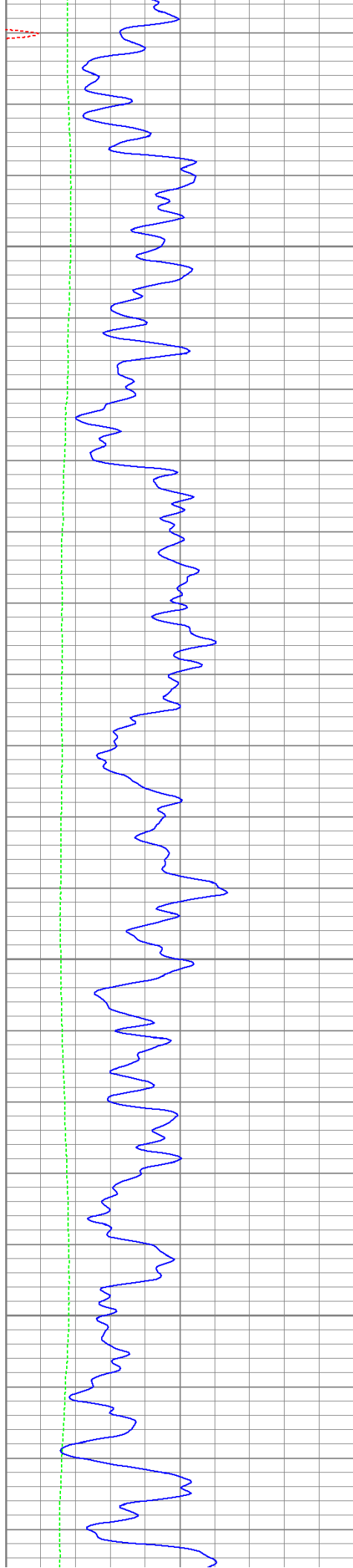
1550

1600

1650

1700



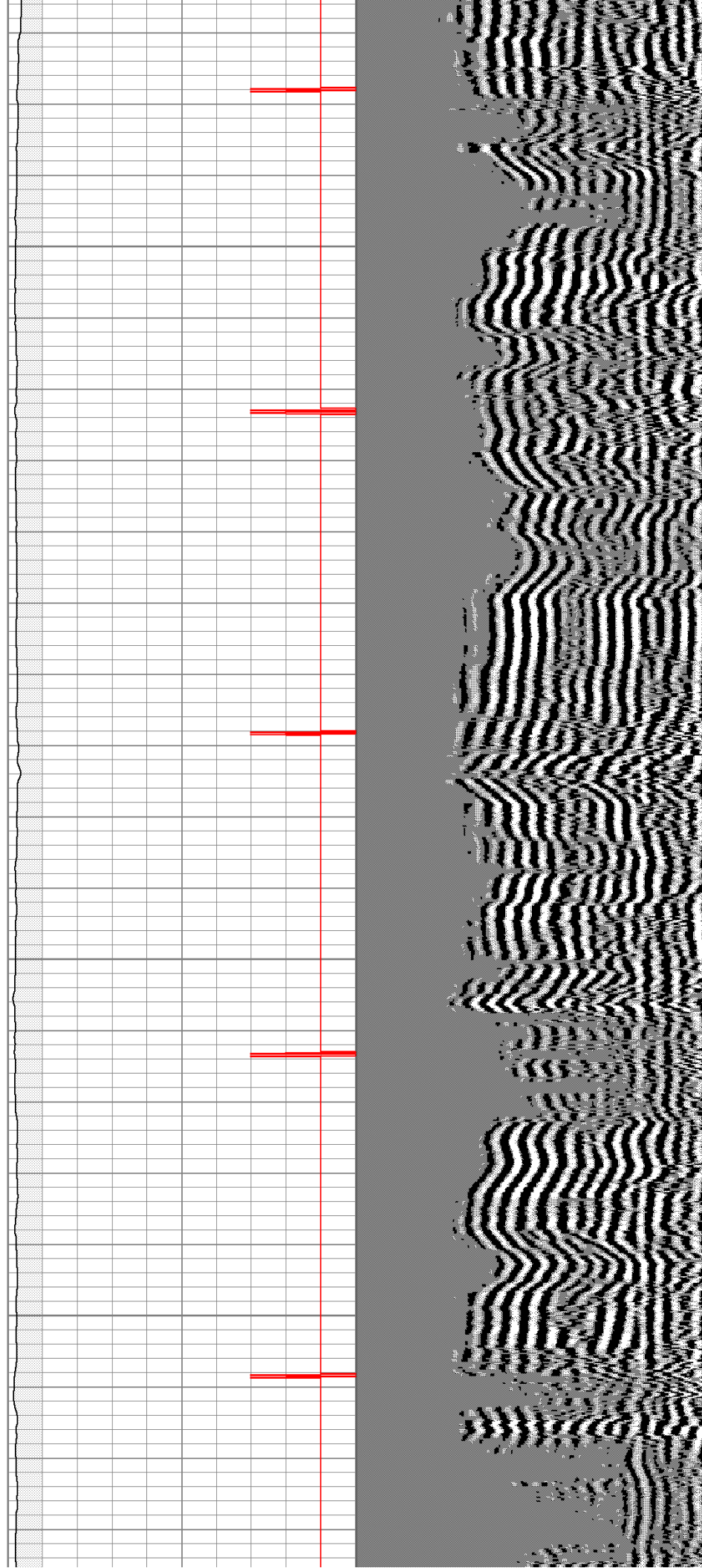


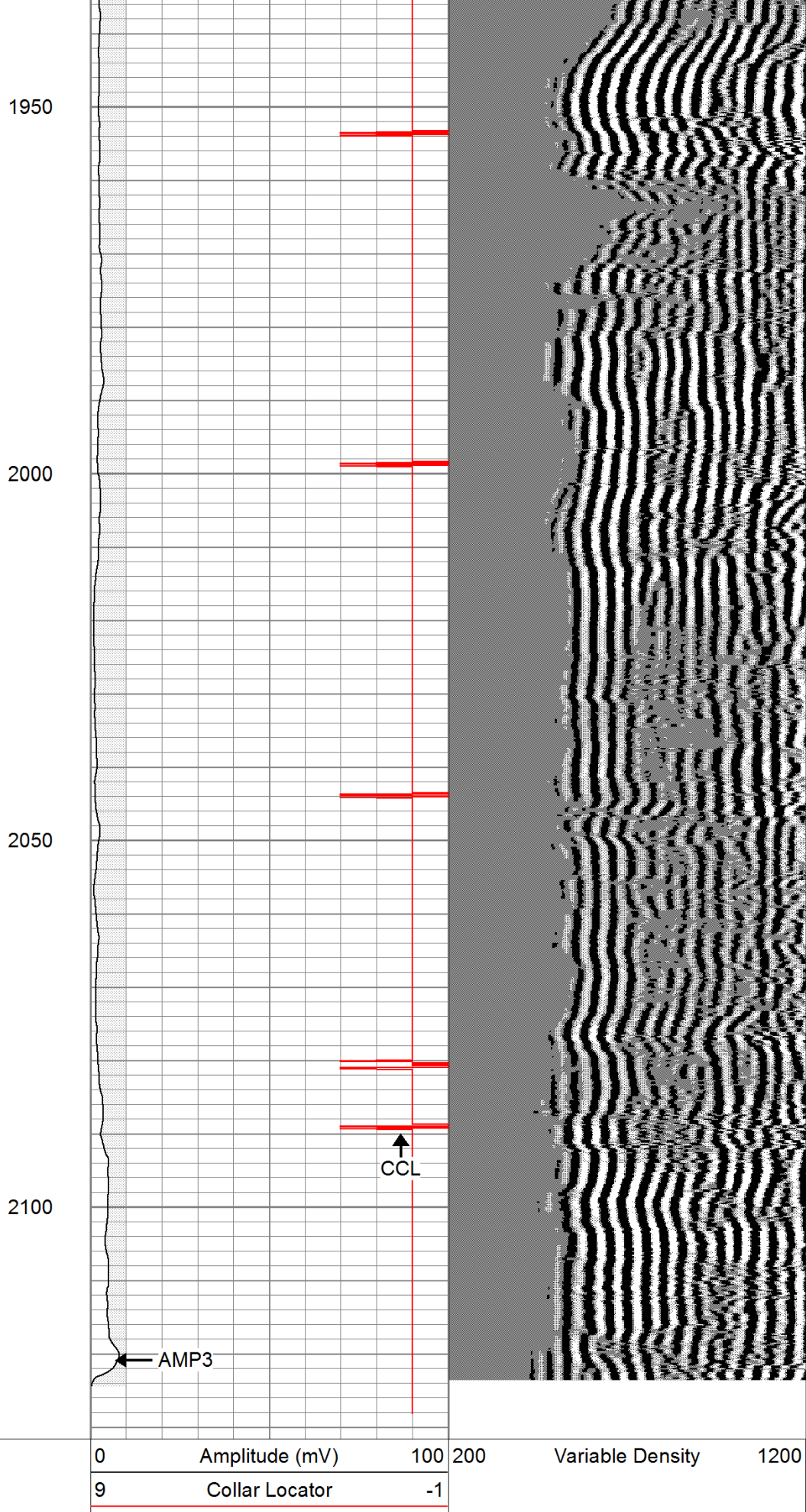
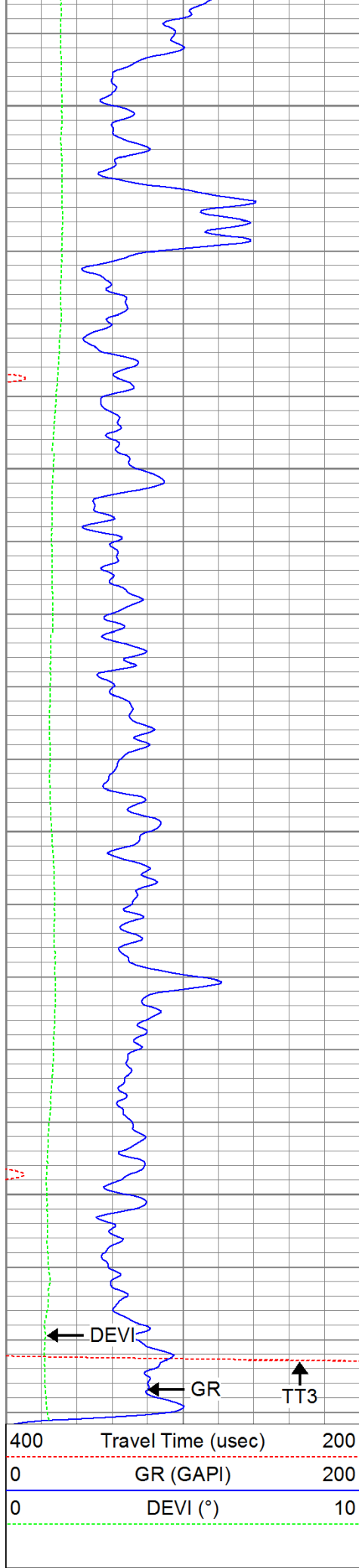
1750

1800

1850

1900



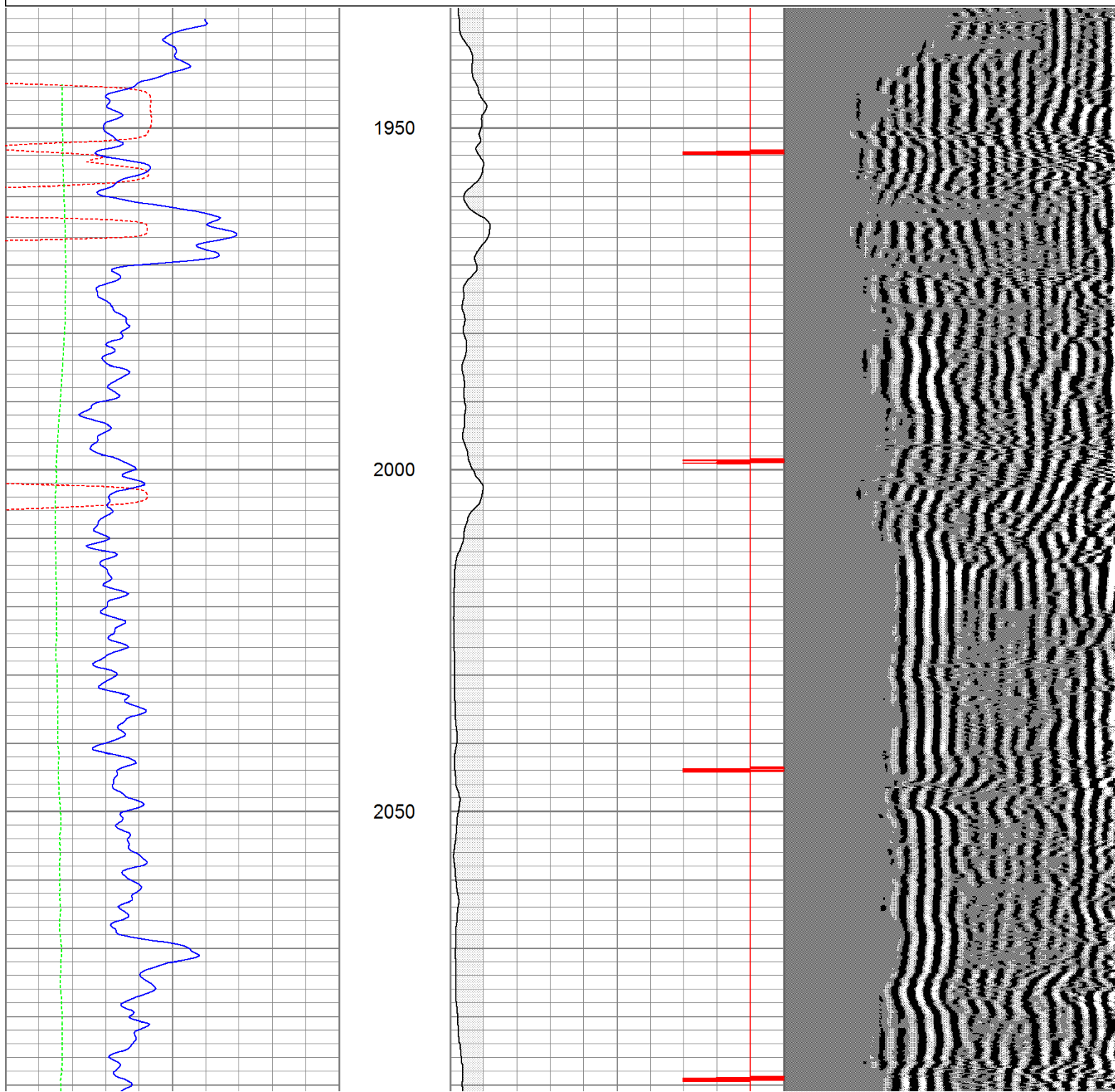


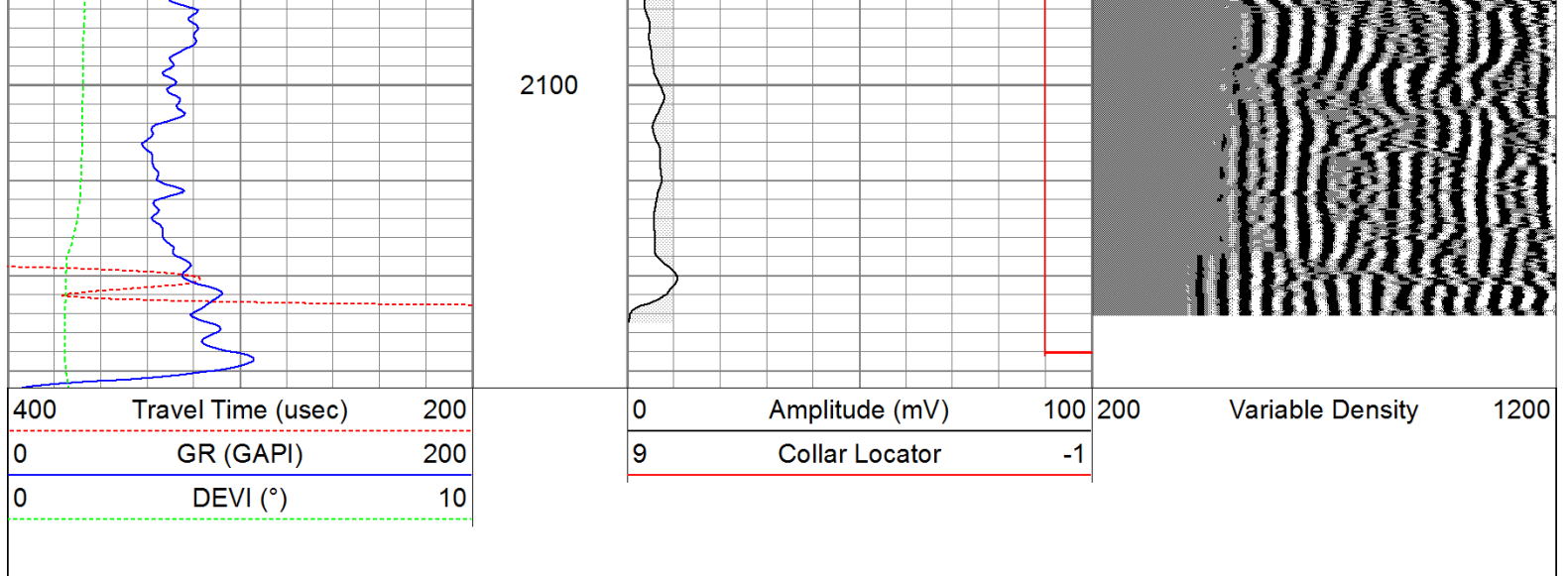
Repeat Pass

Database File: ac09-0871311b.db
 Dataset Pathname: pass1
 Presentation Format: cbldig
 Dataset Creation: Wed Jul 13 15:40:43 2011 by Log Open-Cased 110302
 Charted by: Depth in Feet scaled 1:240

400	Travel Time (usec)	200
0	GR (GAPI)	200
0	DEVI (°)	10

0	Amplitude (mV)	100	200	Variable Density	1200
9	Collar Locator	-1			





Calibration Report

Database File: ac09-0871311b.db
Dataset Pathname: pass1
Dataset Creation: Wed Jul 13 15:40:43 2011 by Log Open-Cased 110302

Gamma Ray Calibration Report			
Serial Number:	080616		
Tool Model:	275D_INC		
Performed:	Wed May 04 17:31:09 2011		
Calibrator Value:	200.0	GAPI	
Background Reading:	50.0	cps	
Calibrator Reading:	250.0	cps	
Sensitivity:	1.0000	GAPI/cps	

Inclinometer Calibration Report					
Performed:	Wed May 04 17:39:54 2011				
	Low Read.	High Read.	Low Ref.	High Ref.	
X Accelerometer	-3585.20	3595.40	-1.00	1.00	gee
Y Accelerometer	-3619.40	3520.00	-1.00	1.00	gee
Z Accelerometer					

Cement Bond Log Calibration Report					
Serial Number:	081024				
Tool Model:	PROBEDIGITALCBL				
Performed:	Sat Jul 09 20:17:28 2011				
Depth:	79.0748	ft			
Casing Diameter:	5.5	in			
	3' Spacing		5' Spacing		
Signal Zero:	0		0		mV
Calibrated Amplitude:	85		85		mV
Reading at Signal Zero:	-0.0115234		-0.0109863		V
Reading in Free Pipe:	1.793		1.18887		V

70.842
0.778293

[illegible]