

HALLIBURTON

XTO ENERGY INC EBUSINESS

Apache Canyon 09-08

Las Animas County , Colorado

Cement Surface Casing
08-Jul-2011

Job Site Documents

The Road to Excellence Starts with Safety

Sold To #: 353810	Ship To #: 2864380	Quote #:	Sales Order #: 8304827
Customer: XTO ENERGY INC EBUSINESS		Customer Rep:	
Well Name: Apache Canyon	Well #: 09-08	API/UWI #:	
Field:	City (SAP): TRINIDAD	County/Parish: Las Animas	State: Colorado
Contractor: Pense Drilling		Rig/Platform Name/Num: 19	
Job Purpose: Cement Surface Casing			
Well Type: Development Well		Job Type: Cement Surface Casing	
Sales Person: PETERSON, ERIC		Srv Supervisor: SANFORD, DALE	MBU ID Emp #: 219527

Job Personnel

HES Emp Name	Exp Hrs	Emp #	HES Emp Name	Exp Hrs	Emp #	HES Emp Name	Exp Hrs	Emp #
BANUELOS, GUADALUPE	3	372277	PAUMEN, CORD Anthony	3	453759	Pliness, Ryan	3	490745
SANFORD, DALE A	3	219527						

Equipment

HES Unit #	Distance-1 way	HES Unit #	Distance-1 way	HES Unit #	Distance-1 way	HES Unit #	Distance-1 way
10025024	30 mile	10824253C	30 mile	11518550	30 mile	11527037	30 mile
11562544C	30 mile						

Job Hours

Date	On Location Hours	Operating Hours	Date	On Location Hours	Operating Hours	Date	On Location Hours	Operating Hours
7-8-11	3	2						
TOTAL			Total is the sum of each column separately					

Job

Job Times

Formation Name	Formation Depth (MD)	Top	Bottom	Form Type	Job depth MD	Job Depth TVD	Water Depth	Perforation Depth (MD)	From	To	Called Out	Date	Time	Time Zone
				BHST	535. ft	535. ft						08 - Jul - 2011	03:30	MST
											On Location	08 - Jul - 2011	06:30	MST
											Job Started	08 - Jul - 2011	07:27	MST
											Job Completed	08 - Jul - 2011	08:49	MST
											Departed Loc	08 - Jul - 2011	10:00	MST

Well Data

Description	New / Used	Max pressure psig	Size in	ID in	Weight lbm/ft	Thread	Grade	Top MD ft	Bottom MD ft	Top TVD ft	Bottom TVD ft
11" Openhole				11.				50.	550.		
8 5/8 Surface	Unknown		8.625	8.097	24.				535.		

Tools and Accessories

Type	Size	Qty	Make	Depth	Type	Size	Qty	Make	Depth	Type	Size	Qty	Make
Guide Shoe					Packer					Top Plug			
Float Shoe					Bridge Plug					Bottom Plug			
Float Collar					Retainer					SSR plug set			
Insert Float										Plug Container			
Stage Tool										Centralizers			

Miscellaneous Materials

Gelling Agt	Conc	Surfactant	Conc	Acid Type	Qty	Conc	%
Treatment Fld	Conc	Inhibitor	Conc	Sand Type	Size	Qty	

Fluid Data

Stage/Plug #: 1	Fluid Name	Qty	Qty uom	Mixing Density lbm/gal	Yield ft3/sk	Mix Fluid Gal/sk	Rate bbl/min	Total Mix Fluid Gal/sk
Fluid #	Stage Type							

Stage/Plug #: 1

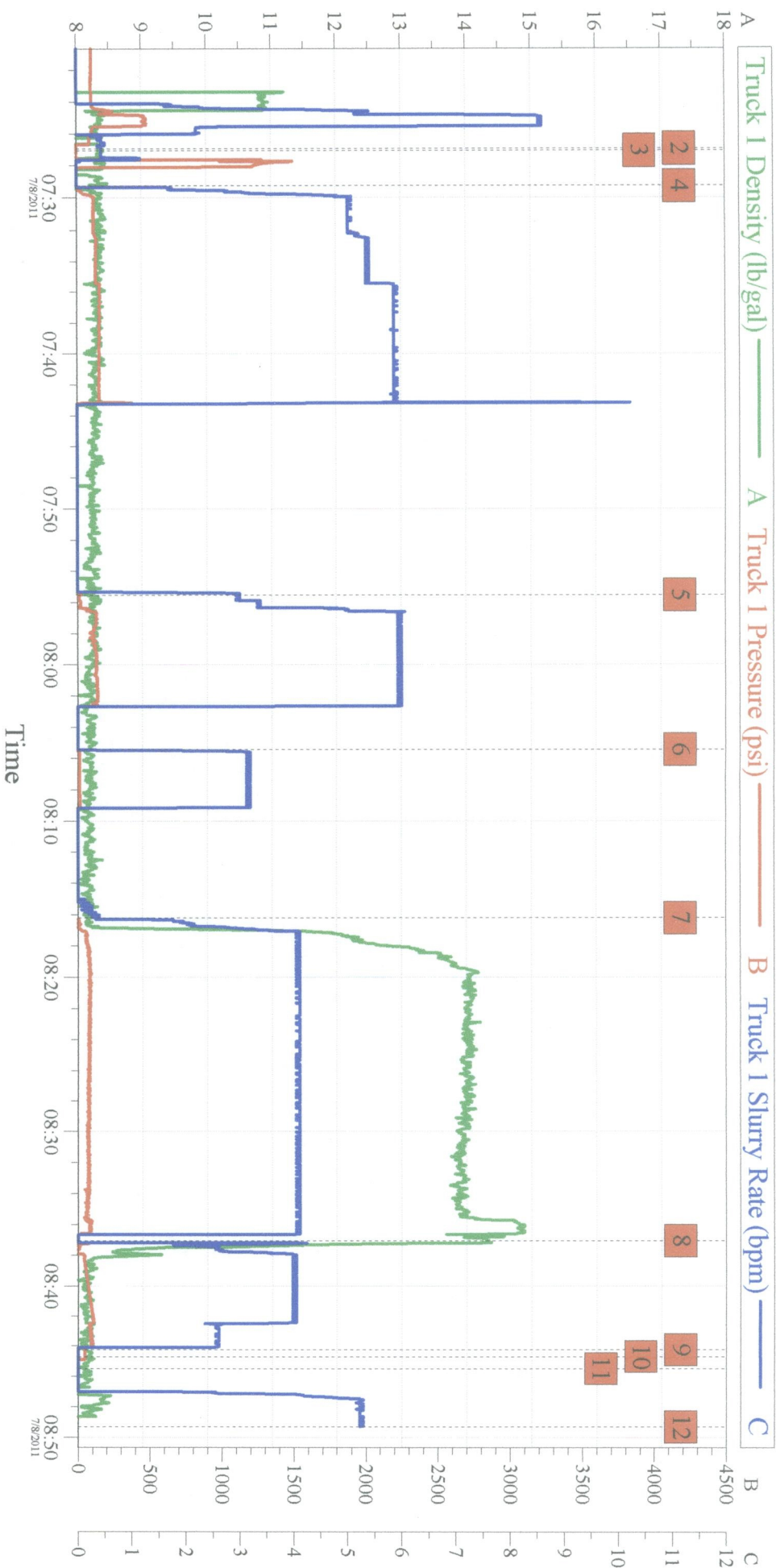
Stage/Plug #: 1										
Fluid #	Stage Type	Fluid Name	Qty	Qty uom	Mixing Density lbm/gal	Yield ft ³ /sk	Mix Fluid Gal/sk	Rate bbl/min	Total Mix Fluid Gal/sk	
1	FRESH WATER			bbl	8.33	.0	.0	.0		
2	Trinidad Surface Blend	TRINIDAD SURFACE BLEND - SBM (137081)		sacks	14.	1.66	7.66	4.0	7.66	
	0.125 lbm	POLY-E-FLAKE (101216940)								
	2 %	CAL-SEAL 60, 50 LB BAG (101217146)								
	2 %	ECONOLITE (100001580)								
	5 lbm	GILSONITE, 50 LB BAG (100001618)								
	0.2 %	VERSASET, 55 LB SK (101376573)								
	6 %	SALT, 100 LB BAG (100003652)								
	7.66 Gal	FRESH WATER								
3	DISPLACEMENT			bbl	8.33	.0	.0	.0		
Calculated Values		Pressures		Volumes						
Displacement	26	Shut In: Instant		Lost Returns	no	Cement Slurry	70	Pad		
Top Of Cement		5 Min		Cement Returns	25	Actual Displacement		Treatment		
Frac Gradient		15 Min		Spacers		Load and Breakdown		Total Job		
Rates										
Circulating		Mixing		Displacement		Avg. Job				
Cement Left In Pipe	Amount	0 ft	Reason	Shoe Joint						
Frac Ring # 1 @	ID	Frac ring # 2 @	ID	Frac Ring # 3 @	ID	Frac Ring # 4 @	ID			
The Information Stated Herein Is Correct				Customer Representative Signature						

The Road to Excellence Starts with Safety

Sold To #: 353810	Ship To #: 2864380	Quote #:	Sales Order #: 8304827
Customer: XTO ENERGY INC EBUSINESS		Customer Rep:	
Well Name: Apache Canyon	Well #: 09-08	API/UWI #:	
Field:	City (SAP): TRINIDAD	County/Parish: Las Animas	State: Colorado
Legal Description:			
Lat:		Long:	
Contractor: Pense Drilling		Rig/Platform Name/Num: 19	
Job Purpose: Cement Surface Casing			Ticket Amount:
Well Type: Development Well		Job Type: Cement Surface Casing	
Sales Person: PETERSON, ERIC		Srvc Supervisor: SANFORD, DALE	MBU ID Emp #: 219527

Activity Description	Date/Time	Cht #	Rate bbl/ min	Volume bbl		Pressure psig		Comments
				Stage	Total	Tubing	Casing	
Test Lines	07/08/2011 07:27							
Pump Spacer 1	07/08/2011 07:29		5	75			50.0	Pit Water
Pump Spacer 1	07/08/2011 07:55		5	40			50.0	Gel Pill
Pump Spacer 1	07/08/2011 08:05		5	12			50.0	Water
Pump Cement	07/08/2011 08:16		4	70			100.0	240 Sks @ 14#
Pump Displacement	07/08/2011 08:37		4	26			100.0	25 Bbl cmt pit
Shut In Well	07/08/2011 08:45							

XTO AC 09-08 Surface



Global Event Log

Intersection	T1P	Intersection	T1P	Intersection	T1P
1 Starting Job	07:05:38 123.5	2 Clean Lines	07:26:56 -0.972	3 Test Lines	07:27:04 -0.972
4 Pump Water	07:29:17 -2.771	5 Pump Gel Pill	07:55:32 14.21	6 Pump Water	08:05:25 -18.51
7 Pump Cement	08:16:13 -2.917	8 Pump Displace	08:37:04 -15.64	9 Shutdown	08:44:15 45.70
10 Shut In Well	08:44:42 46.84	11 End Job	08:45:29 -45.70	12 Ending Job	08:49:18 -47.64

Customer: xto
Well Description: 8 5/8 surf

Job Date: 08-Jul-2011
UWI:

Sales Order #: 8304827