

Company		XTO Energy Inc.	
Well		Apache Canyon 09-06	
Field		Purgatorie River	
County		Las Animas	
State		Colorado	

Location:		API # : 05-071-09678-00		Other Services	
SEC 9		TWP 34S		RGE 67W	
Permanent Datum		GL		Elevation 7603'	
Log Measured From		G.L.		Elevation	
Drilling Measured From		G.L.		K.B. 7607	
				D.F. 7603	

Date		7-14-11			
Run Number		one			
Depth Driller		2155'			
Depth Logger		2088'			
Bottom Logged Interval		2086'			
Top Log Interval		Surface			
Open Hole Size		7 7/8			
Type Fluid		water			
Density / Viscosity		///			
Max. Recorded Temp.		///			
Estimated Cement Top		37' FS			
Time Well Ready		r.o.a			
Time Logger on Bottom		2:45 P.M.			
Equipment Number		T590			
Location		Trinidad			
Recorded By		T. Patterson			
Witnessed By		E. Haught			

Borehole Record				Tubing Record			
Run Number	Bit	From	To	Size	Weight	From	To

Casing Record	Size	Wgt/Ft	Top	Bottom
Surface String	8 5/8"			454'
Prot. String				
Production String	5 1/5"			TD
Liner				

<<< Fold Here >>>

All interpretations are opinions based on inferences from electrical or other measurements and we cannot and do not guarantee the accuracy or correctness of any interpretation, and we shall not, except in the case of gross or willful negligence on our part, be liable or responsible for any loss, costs, damages, or expenses incurred or sustained by anyone resulting from any interpretation made by any of our officers, agents or employees. These interpretations are also subject to our general terms and conditions set out in our current Price Schedule.

### Comments

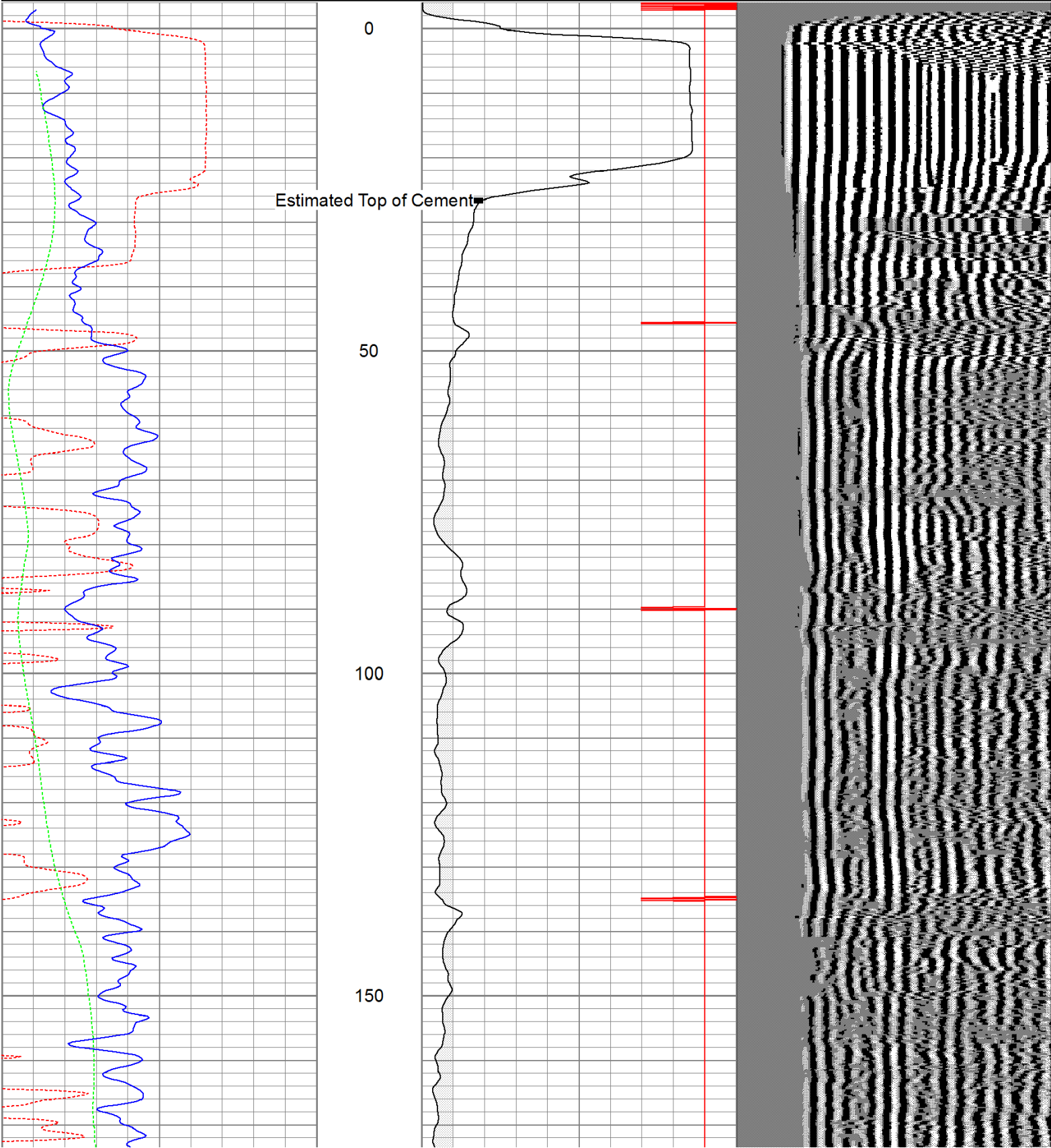
Main Pass logged under 1000 PSI.

Database File: ac09-0671411b.db  
Dataset Pathname: pass2  
Presentation Format: cbldig  
Dataset Creation: Thu Jul 14 15:03:32 2011 by Log Open-Cased 110302  
Charted by: Depth in Feet scaled 1:240

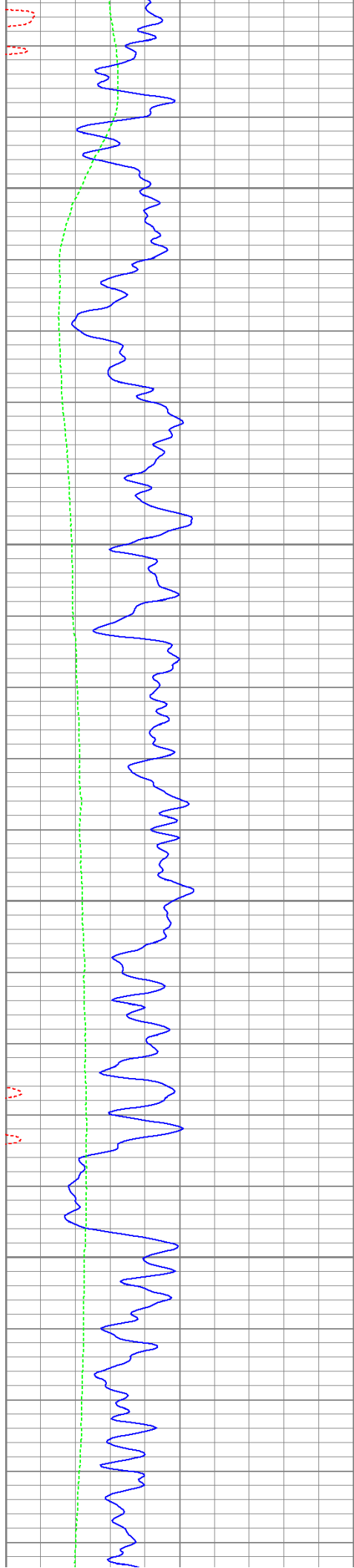
400	Travel Time (usec)	200
0	GR (GAPI)	200
0	DEVI (°)	10

0	Amplitude (mV)	100
9	Collar Locator	-1

200 Variable Density 1200





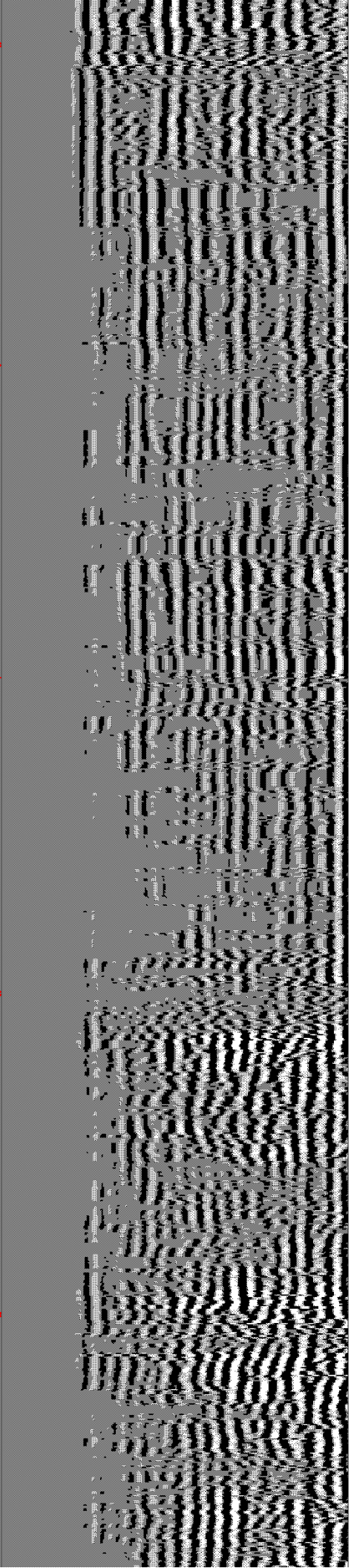
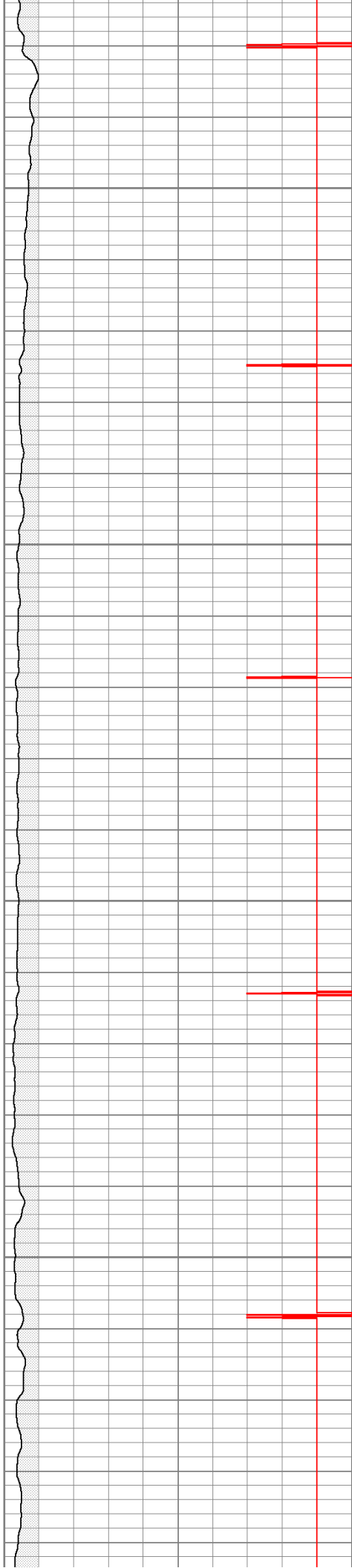


200

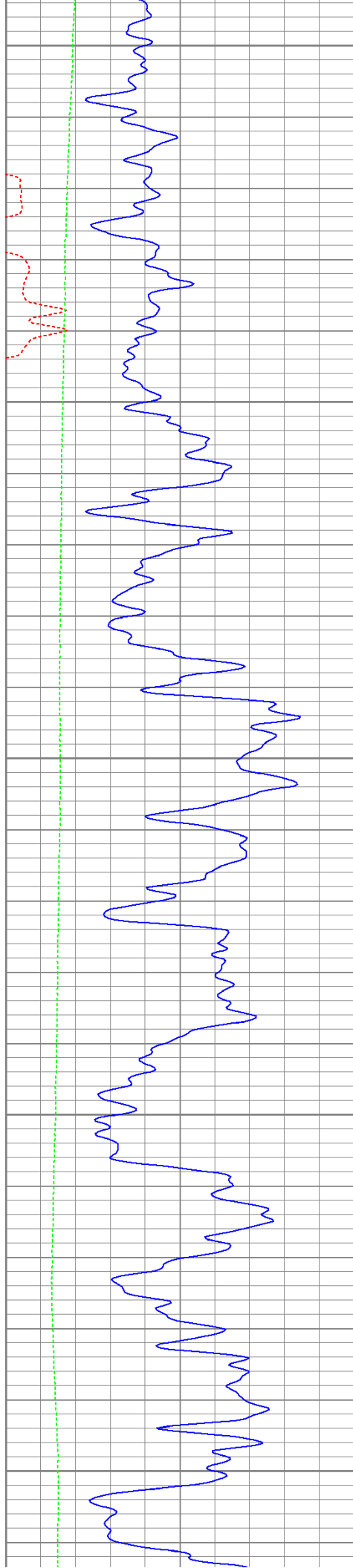
250

300

350







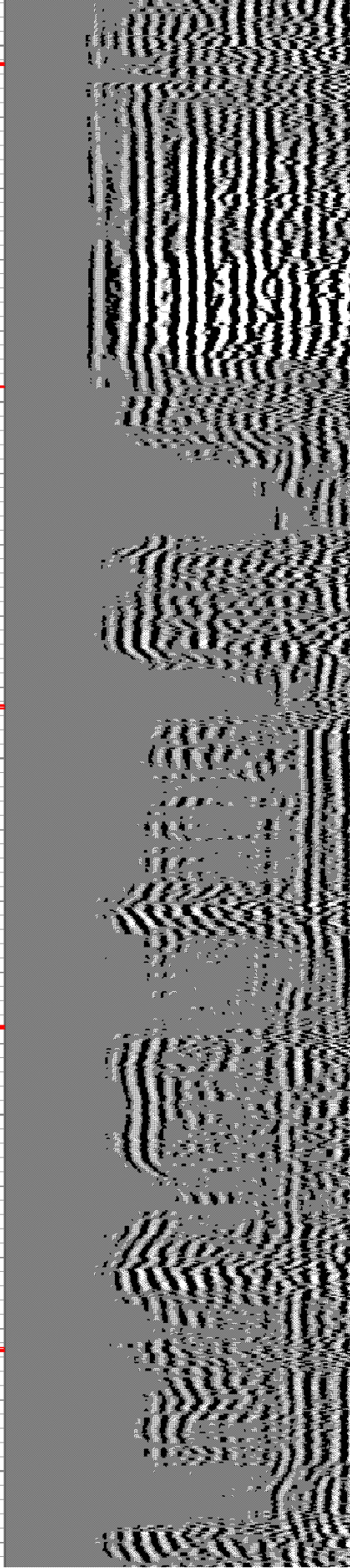
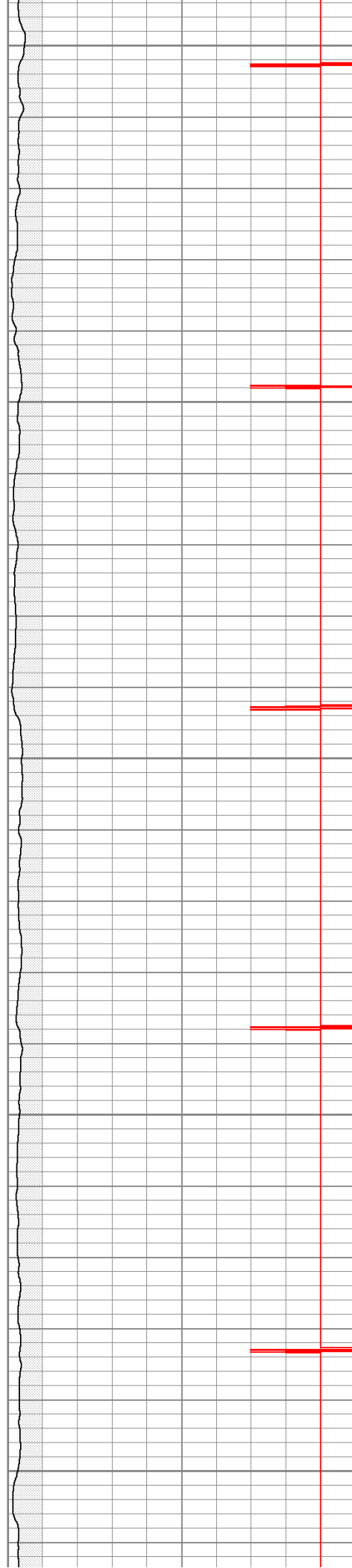
400

450

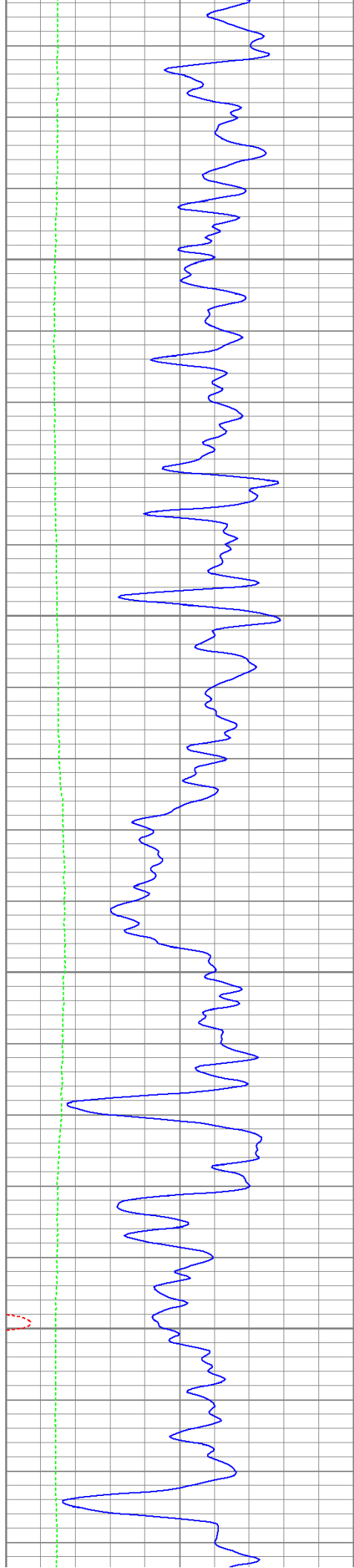
500

550

600





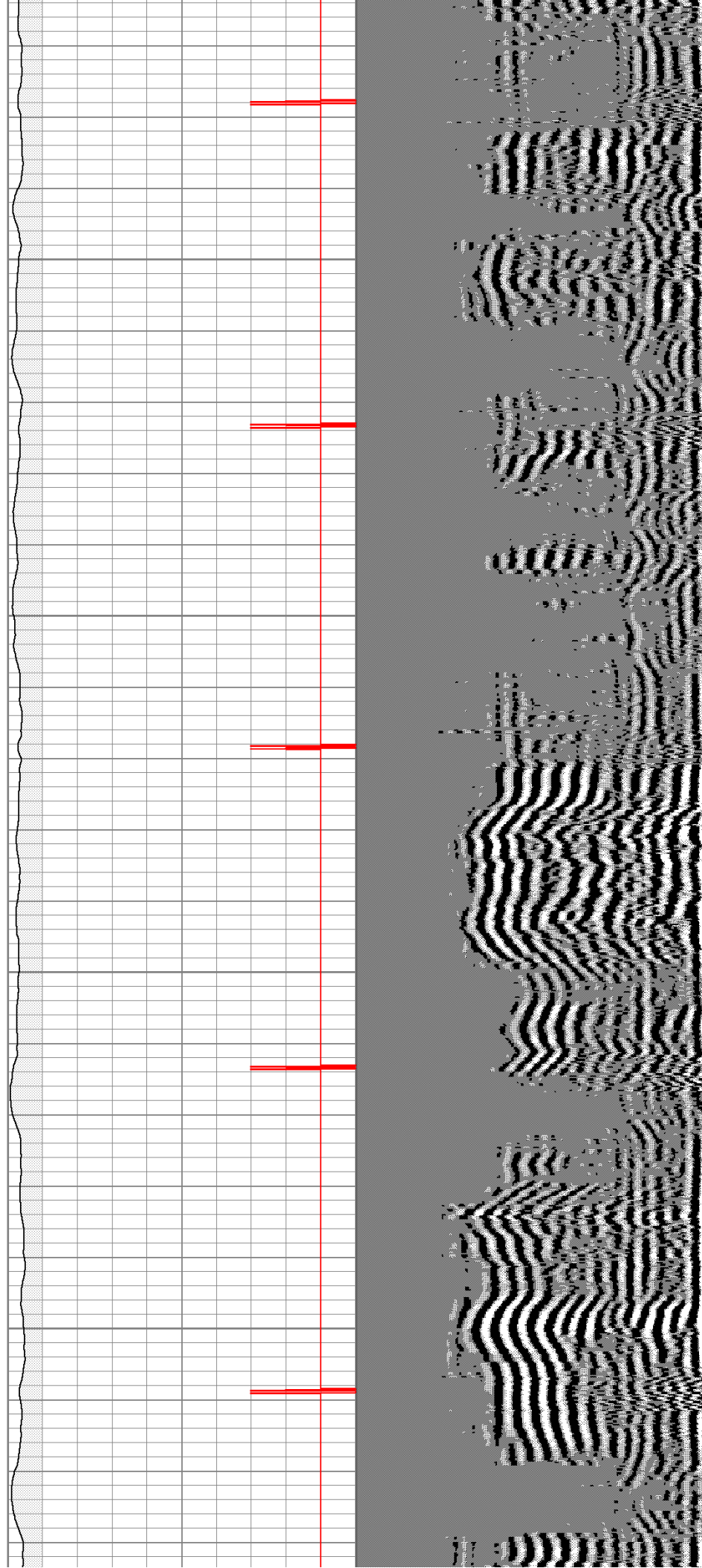


650

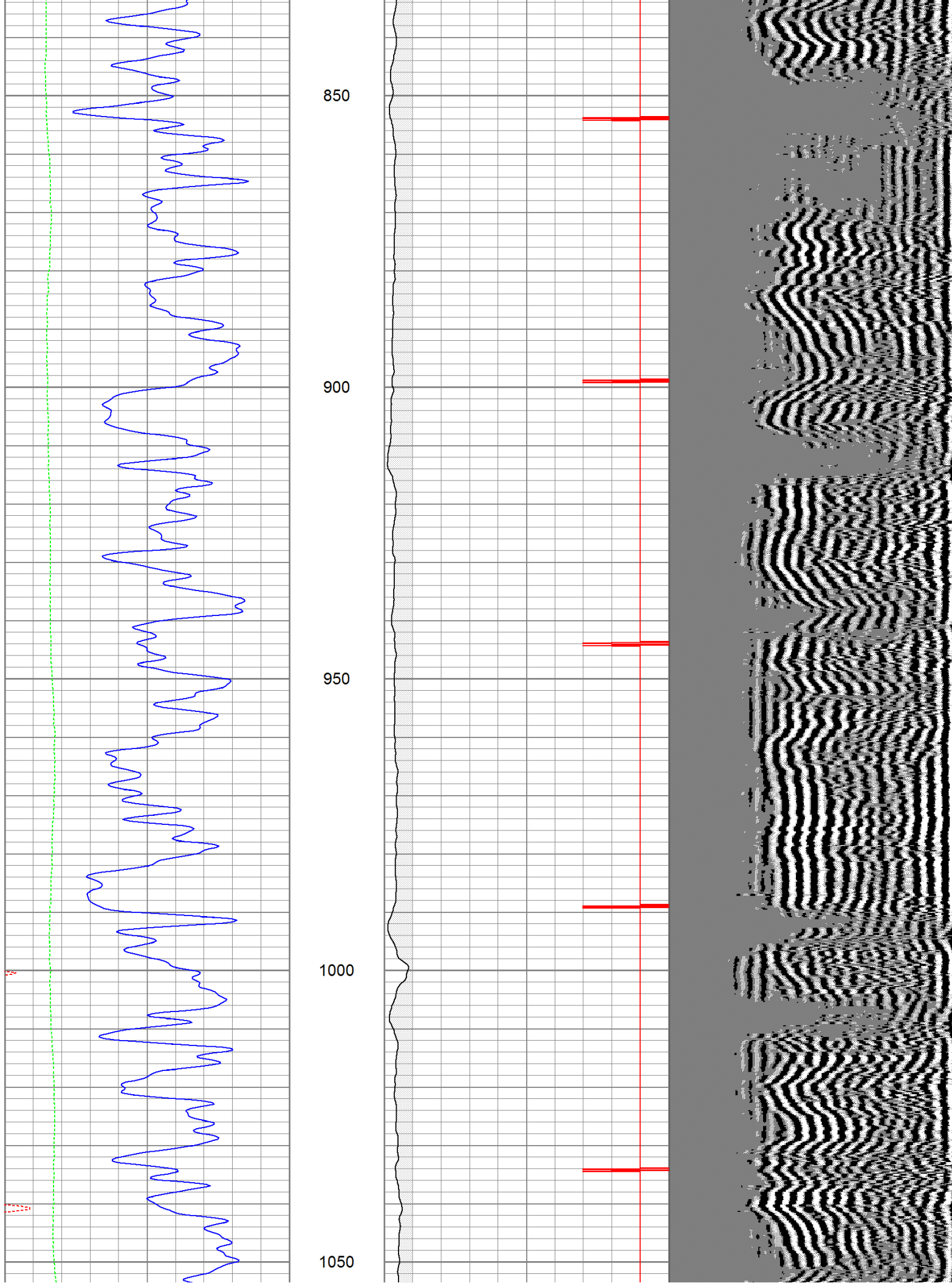
700

750

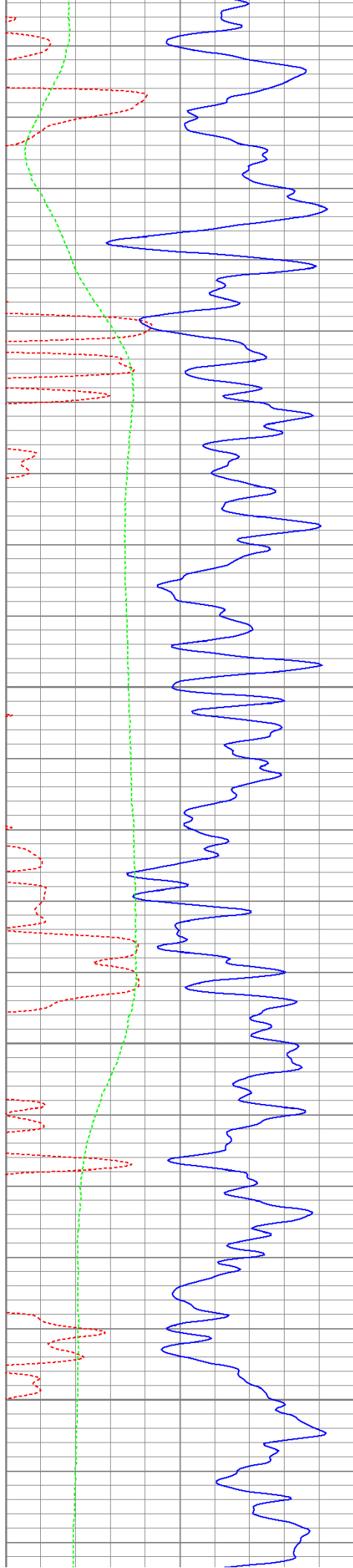
800









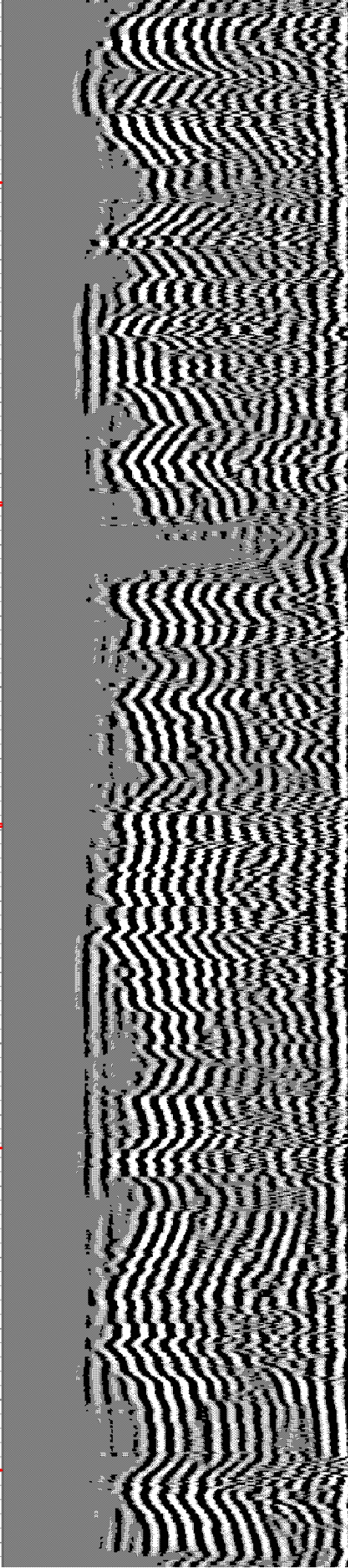
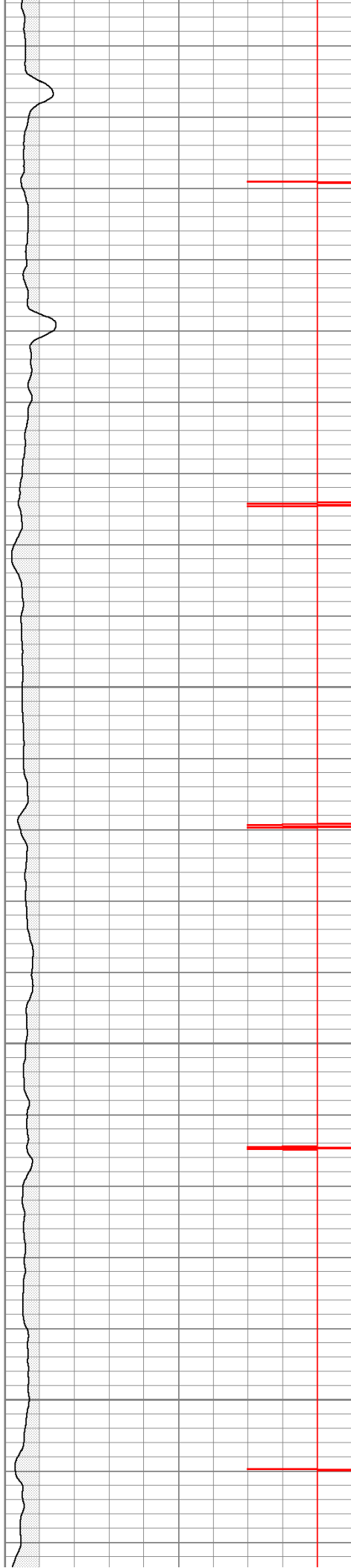


1100

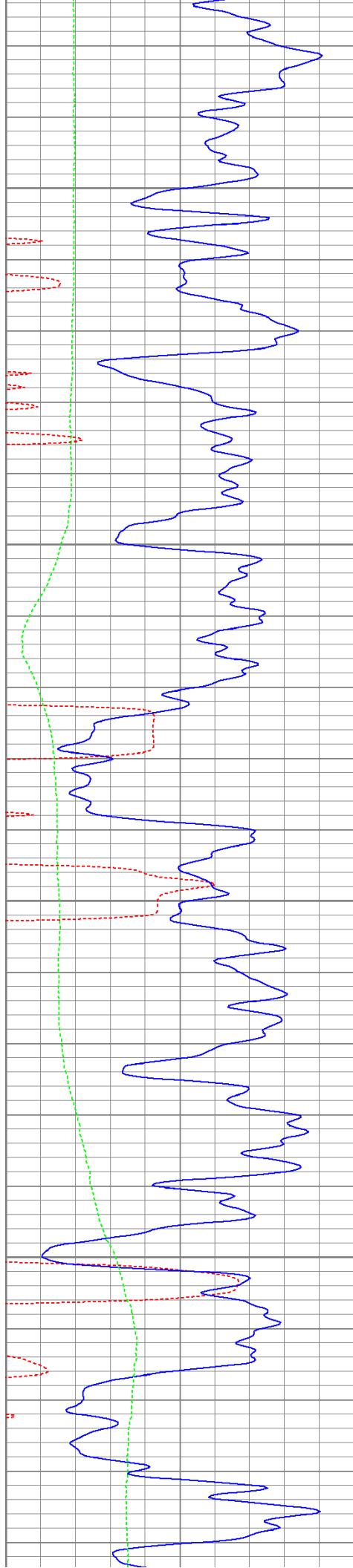
1150

1200

1250





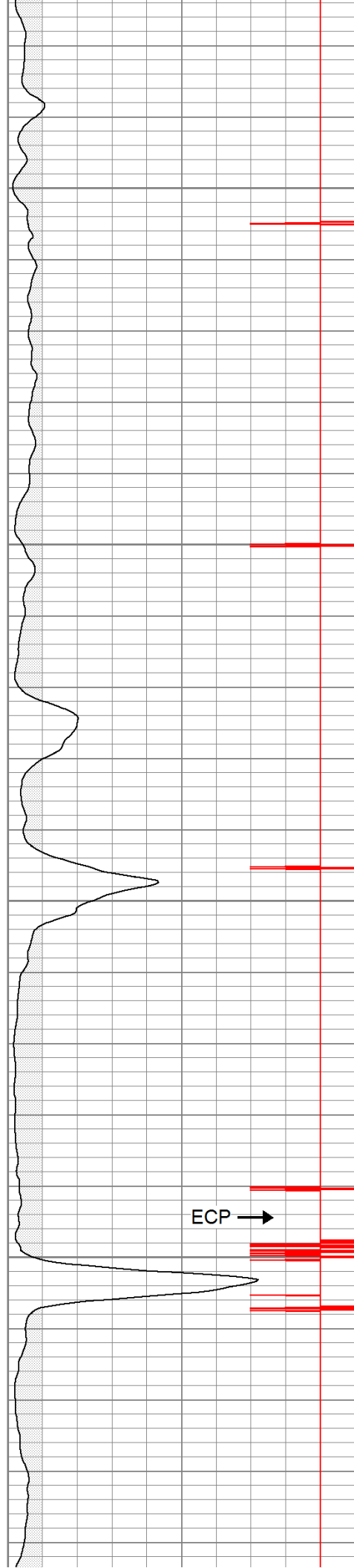


1300

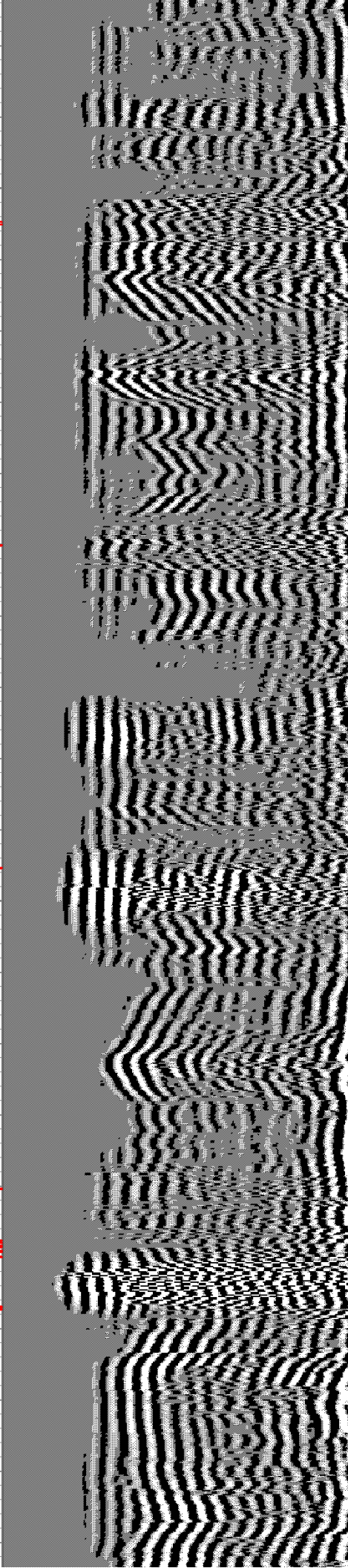
1350

1400

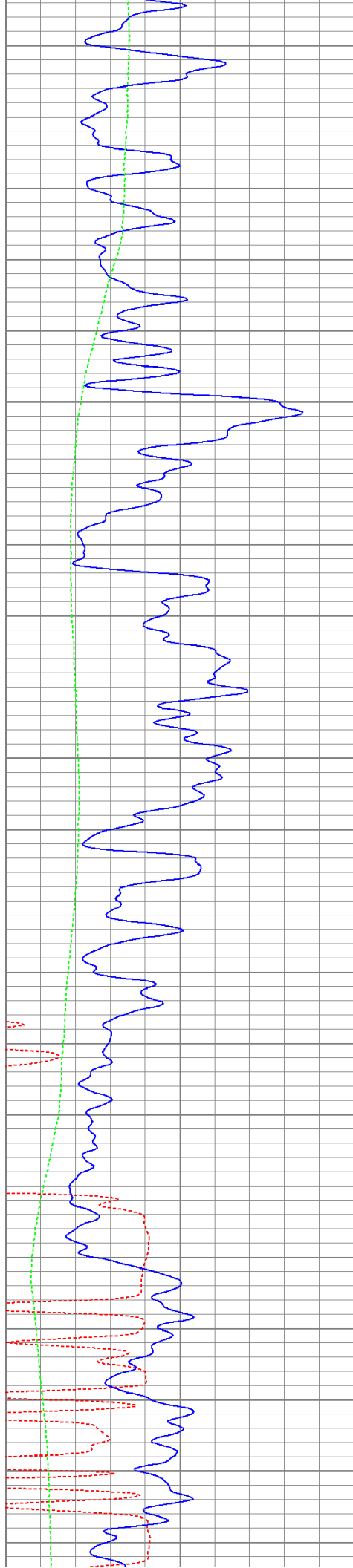
1450



ECP →







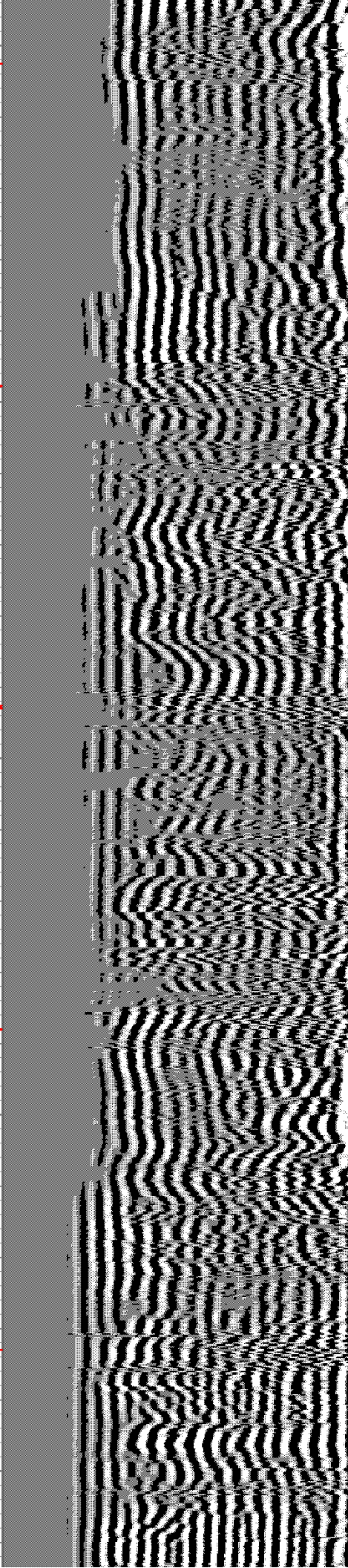
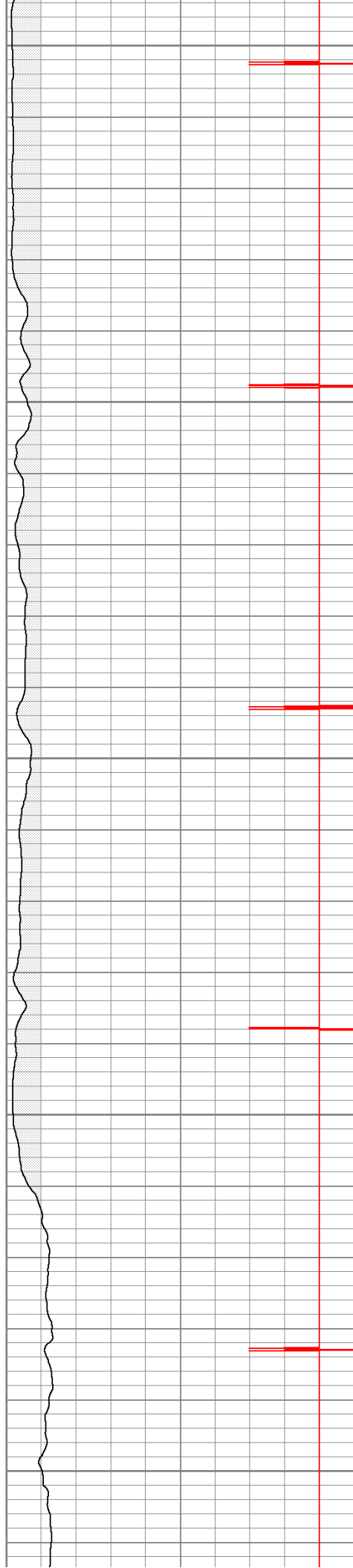
1500

1550

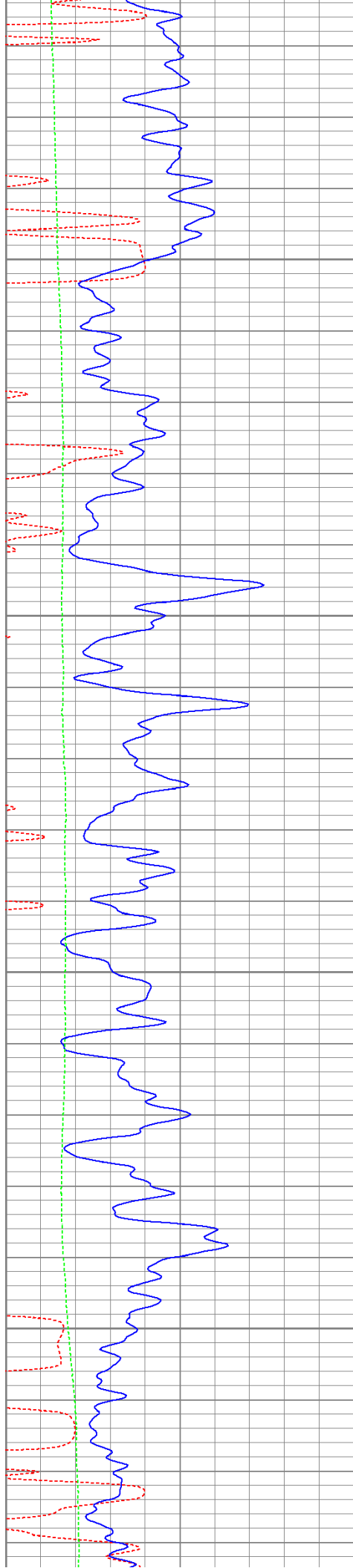
1600

1650

1700





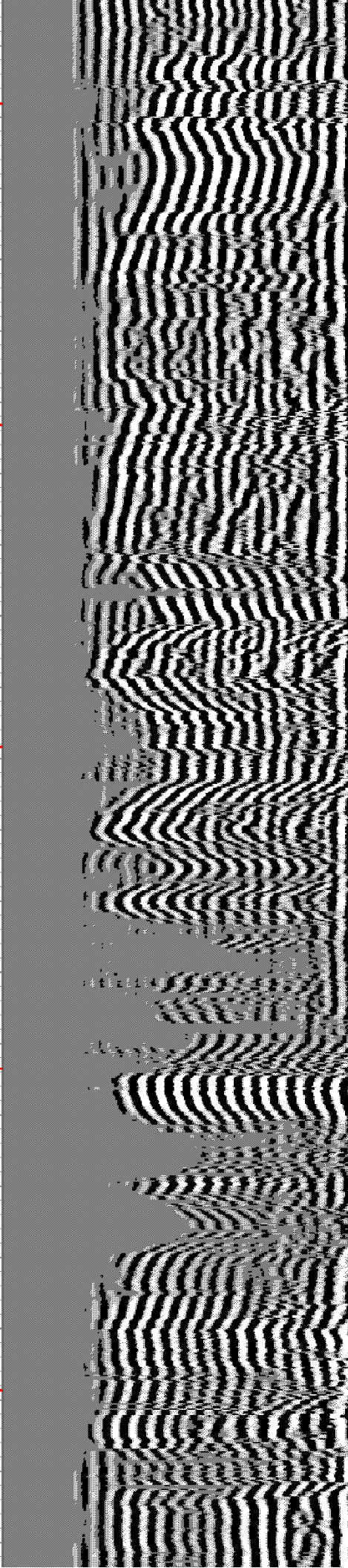
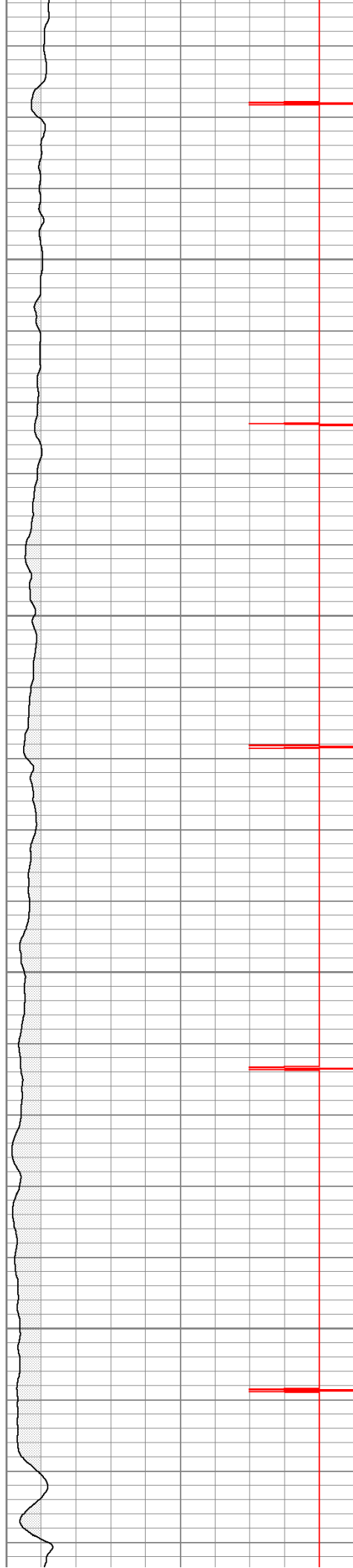


1750

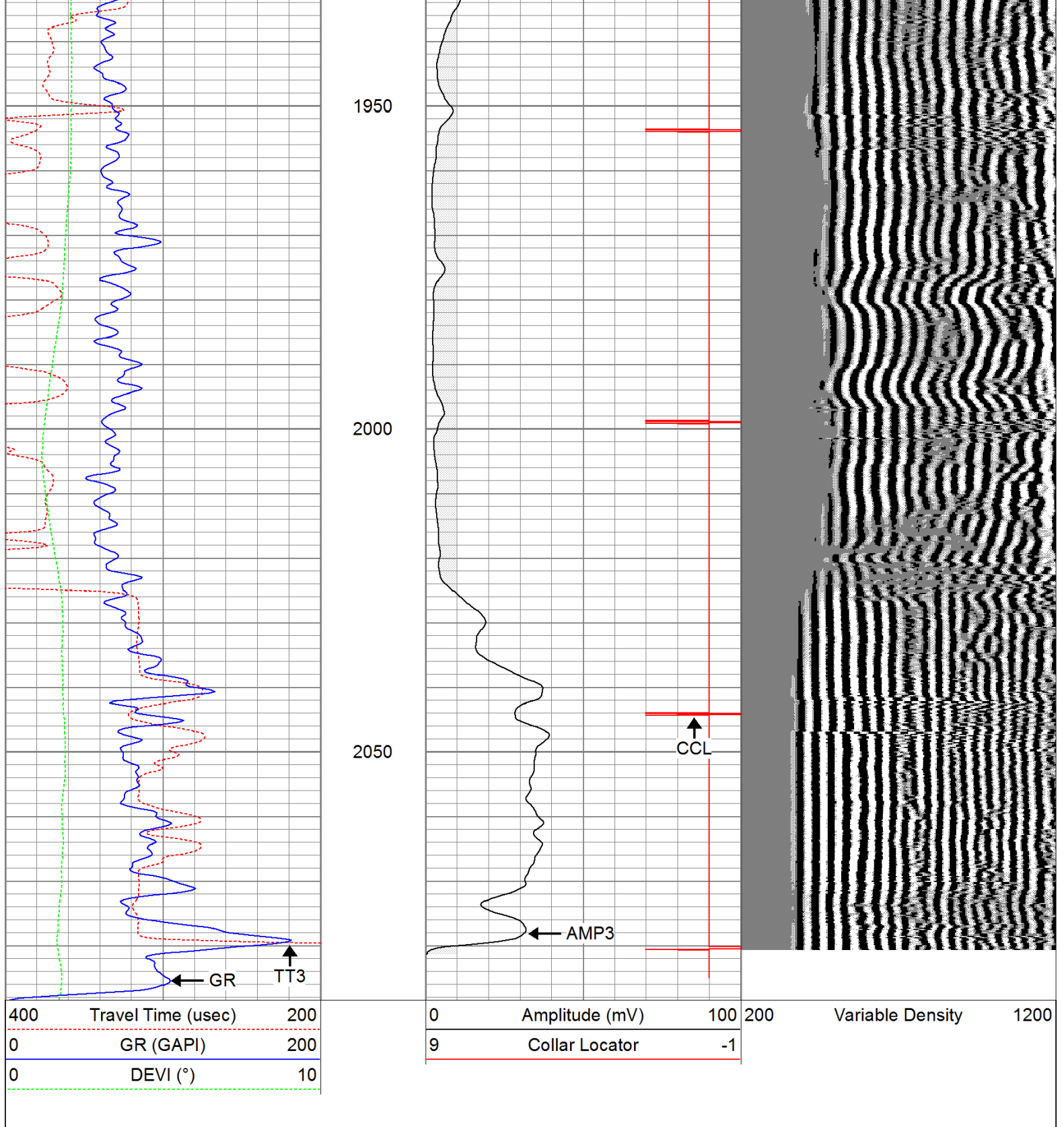
1800

1850

1900







# Repeat Pass

Database File: ac09-0671411b.db  
 Dataset Pathname: pass1  
 Presentation Format: cbldig  
 Dataset Creation: Thu Jul 14 14:49:03 2011 by Log Open-Cased 110302  
 Charted by: Depth in Feet scaled 1:240

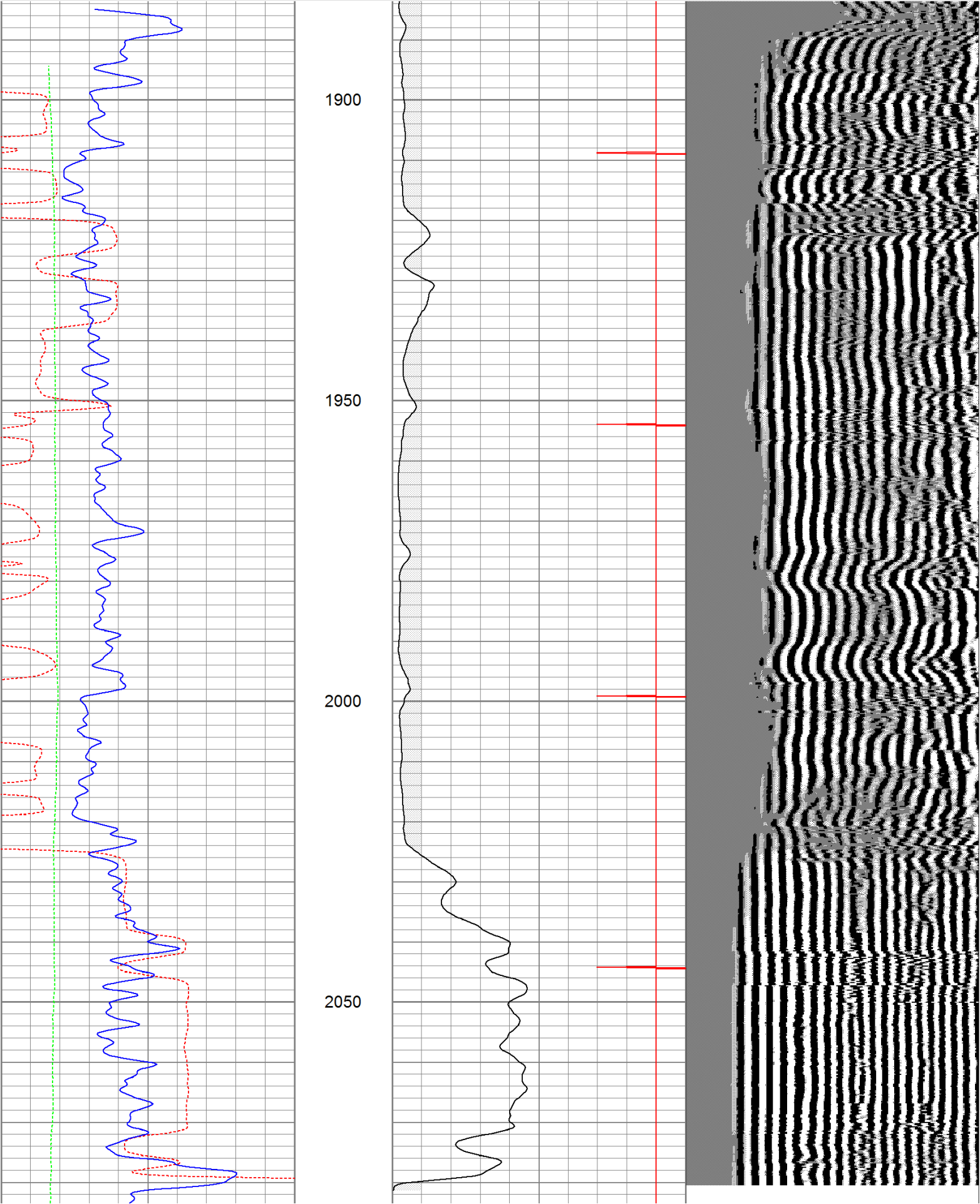
400	Travel Time (usec)	200
0	GR (GAPI)	200
0	DEVI (°)	10

0	Amplitude (mV)	100
9	Collar Locator	-1

200

Variable Density


1200





400	Travel Time (usec)	200	0	Amplitude (mV)	100	200	Variable Density	1200
0	GR (GAPI)	200	9	Collar Locator	-1			
0	DEVI (°)	10						

Calibration Report					
Database File:	ac09-0671411b.db				
Dataset Pathname:	pass1				
Dataset Creation:	Thu Jul 14 14:49:03 2011 by Log Open-Cased 110302				
Gamma Ray Calibration Report					
Serial Number:	080616				
Tool Model:	275D_INC				
Performed:	Wed May 04 17:31:09 2011				
Calibrator Value:	200.0	GAPI			
Background Reading:	50.0	cps			
Calibrator Reading:	250.0	cps			
Sensitivity:	1.0000	GAPI/cps			
Inclinometer Calibration Report					
Performed:	Wed May 04 17:39:54 2011				
	Low Read.	High Read.	Low Ref.	High Ref.	
X Accelerometer	-3585.20	3595.40	-1.00	1.00	gee
Y Accelerometer	-3619.40	3520.00	-1.00	1.00	gee
Z Accelerometer					
Cement Bond Log Calibration Report					
Serial Number:	081024				
Tool Model:	PROBEDIGITALCBL				
Performed:	Sat Jul 09 20:17:28 2011				
Depth:	79.0748	ft			
Casing Diameter:	5.5	in			
	3' Spacing	5' Spacing			
Signal Zero:	0	0	mV		
Calibrated Amplitude:	85	85	mV		
Reading at Signal Zero:	-0.0115234	-0.0109863	V		
Reading in Free Pipe:	1.793	1.18887	V		
Gain:	47.1039	70.842			
Offset:	0.542797	0.778293			

Sensor	Offset (ft)	Schematic	Description	Len (ft)	OD (in)	Wt (lb)
			None	0.75	1.50	5.00
			Star	0.29	1.50	0.50

