



Copyright © 2003 by Epoch Well Services, Inc.

Houston, TX
(281) 784-5500
Bakersfield, CA
(661) 328-1595
New Iberia, LA
(337) 364-2322
Anchorage, AK
(907) 561-2465

Drilling Dynamics MD

COMPANY	ExxonMobil Production
WELL	PCU296-6A8
FIELD	PICEANCE
REGION	ROCKIES
COORDINATES	39.900102 108.212136
ELEVATION	7363.9
COUNTY, STATE	RIO BLANCO, CO
API INDEX	05-103-11479-00
SPUD DATE	04/05/2010
CONTRACTOR	HE
CO. REP.	KEVIN GARDNER
RIG/TYPE	239 / FLEX 3
LOGGING UNIT	33
GEOLOGISTS	NICK BAUER JASON REISENBICHLER
ADD. PERSONS	LAYNE GOOD JASON REYNOLDS
CO. GEOLOGIST	MELISSA SAURBORN

LOG INTERVAL

DEPTHS: 148' TO 9717'
DATES: 04/05/2010 TO 04/19/2010
SCALE: 1"=100'

CASING DATA

16" AT 147'
10.75" AT 4438'
AT
AT

MUD TYPES

SPUD MUD TO 4454'
LSND TO 9717'
TO
TO

HOLE SIZE

14.75" TO 4454'
9.875" TO 9717'
TO
TO

ABBREVIATIONS

NB	NEWBIT	PV	PLASTIC VISCOSITY	LC	LOST CIRCULATION
RRB	RERUN BIT	YP	YIELD POINT	CO	CIRCULATE OUT
CB	CORE BIT	FL	FLUID LOSS	NR	NO RETURNS
WOB	WEIGHT ON BIT	CL	PPM CLORIDE ION	TG	TRIP GAS
RPM	ROTARY REV/MIN	Rm	MUD RESISTIVITY	SG	SURVEY GAS
PP	PUMP PRESSURE	Rmf	FILTRATE RESISTIVITY	WG	WIPER GAS
SPM	STROKES/MIN	PR	POOR RETURNS	CG	CONNECTION GAS
MW	MUD WEIGHT	LAT	LOGGED AFTER TRIP		
VIS	FUNNEL VISCOSITY	LAS	LOGGED AFTER SURVEY		

	ALTERED ZONE		CHERT - GLASSY		FELSIC SILIC DIKE		MARL - CALC		SANDSTONE
	ANDESITE		CHERT - PORCEL		FOSSIL		METAMORPHICS		SANDSTONE-TUFFACEOUS
	ANHYDRITE		CHERT - TIGER STRIPE		GABBRO		MUDSTONE		SERICITIZATION
	BASALT		CHERT - UNDIFF		GLASSY TUFF		OBSIDIAN		SERPENTINE
	BENTONITE		CLAY		GRANITE		PALEOSOL		SHALE
	BIOTITIZATION		CLAY-MUDSTONE		GRANITE WASH		PHOSPHATE		SHALE TUFFACEOUS
	BRECCIA		CLYST-TUFFACEOUS		GRANODIORITE		PORCELANITE		SHELL FRAGMENTS
	CALCARENITE		CHLORITIZATION		GYPSUM		PORCELANEOUS CLYST		SIDERITE
	CALCAREOUS TUFF		COAL		HALITE		PYRITE		SILICIFICATION
	CALCILUTITE		CONGLOMERATE		HORNBL-QTZ-DIO		PYROCLASTICS		SILTSTONE
	CARBONATES		CONGL. SAND		IGNEOUS (ACIDIC)		QUARTZ DIORITE		SILTST-TUFFACEOUS
	CARBONACEOUS MAT		CONGL. SANDSTONE		IGNEOUS (BASIC)		QUARTZ LATITE		TUFF
	CARBONACEOUS SH		COQUINA		INTRUSIVES		QUARTZ MONZONITE		VOLCANICLASTICS SEDS
	CEMENT CONTAM.		DACITE		KAOLINITIC		RECRYSTALLIZED CALCITE		VOLCANICS
	CHALK		DIORITE		LIMESTONE		RHYOLITE		
	CRYSTALLINE TUFF		DOLOSTONE		LITHIC TUFF		SALT		
	CHERT - ARGILL				MARL - DOLO		SAND		

Lithology

Ttl Gas 1K>
units
CO2 10K>
ppm
Flare Ht. 100>
ft

Depth

100

200

300

400

500

600

700

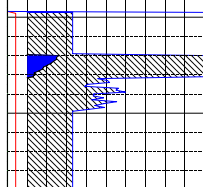
800

900

<150 Avg RPM 0> <200 ROP 0> <400 MSE 0>
ft/hr
<30K Avg Torque 0> <50 Avg WOB 0>
FTLBS klbs

MGS

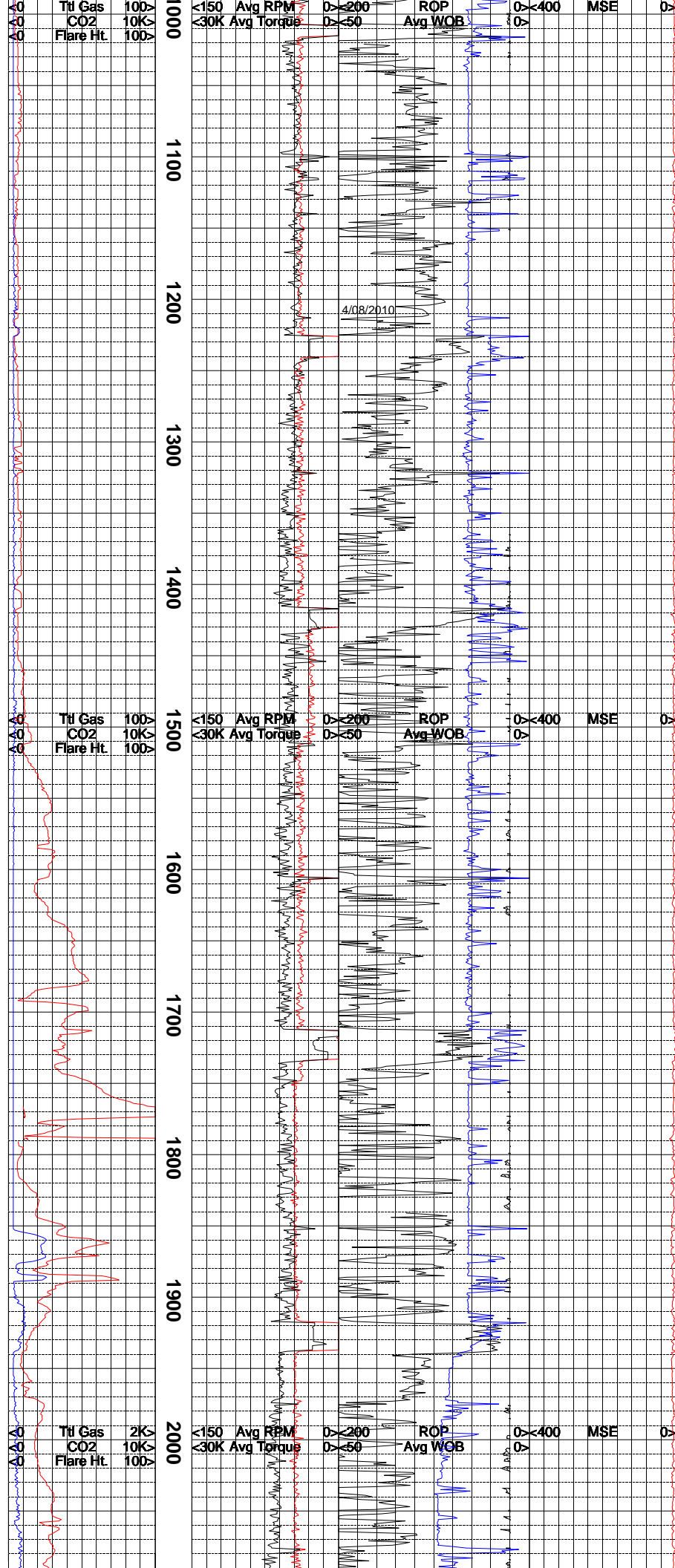
Remarks
Survey Data, Mud Reports, Other Info.

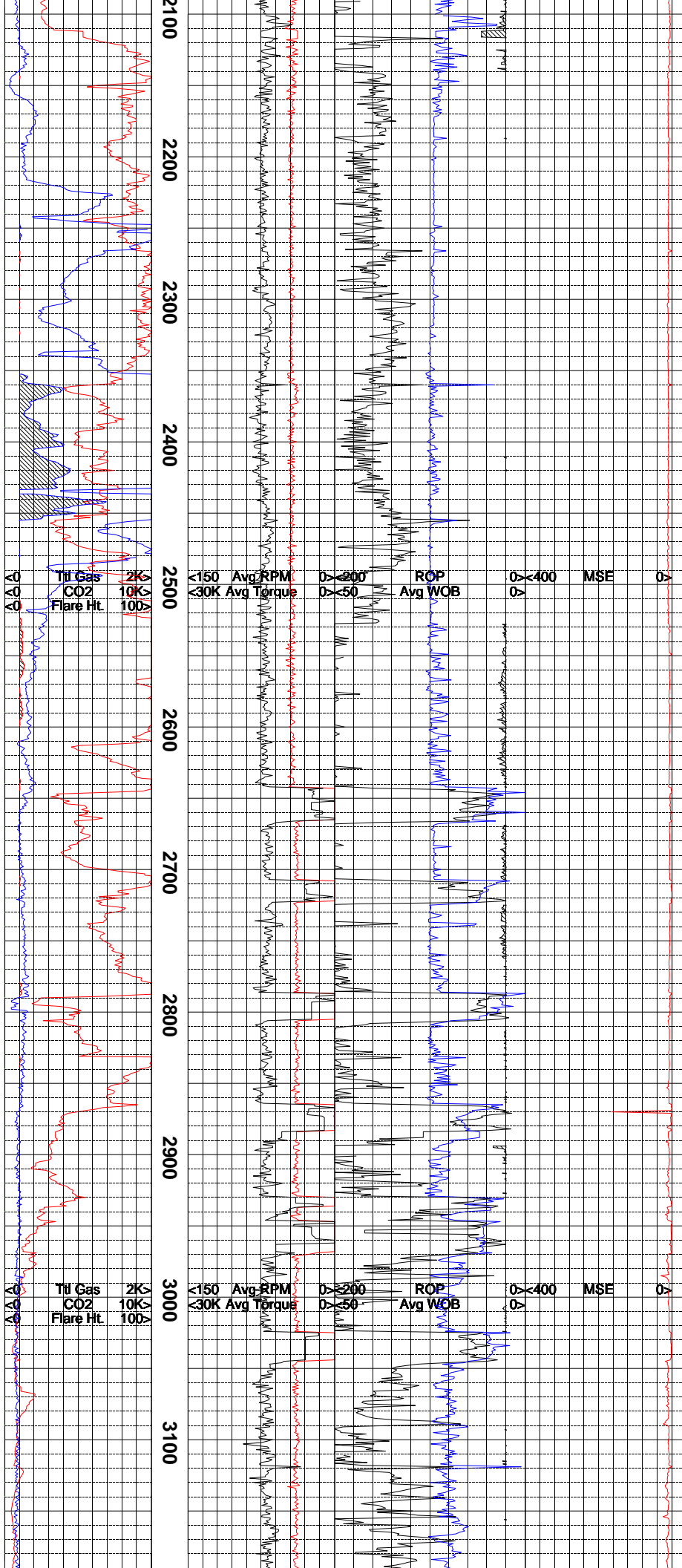


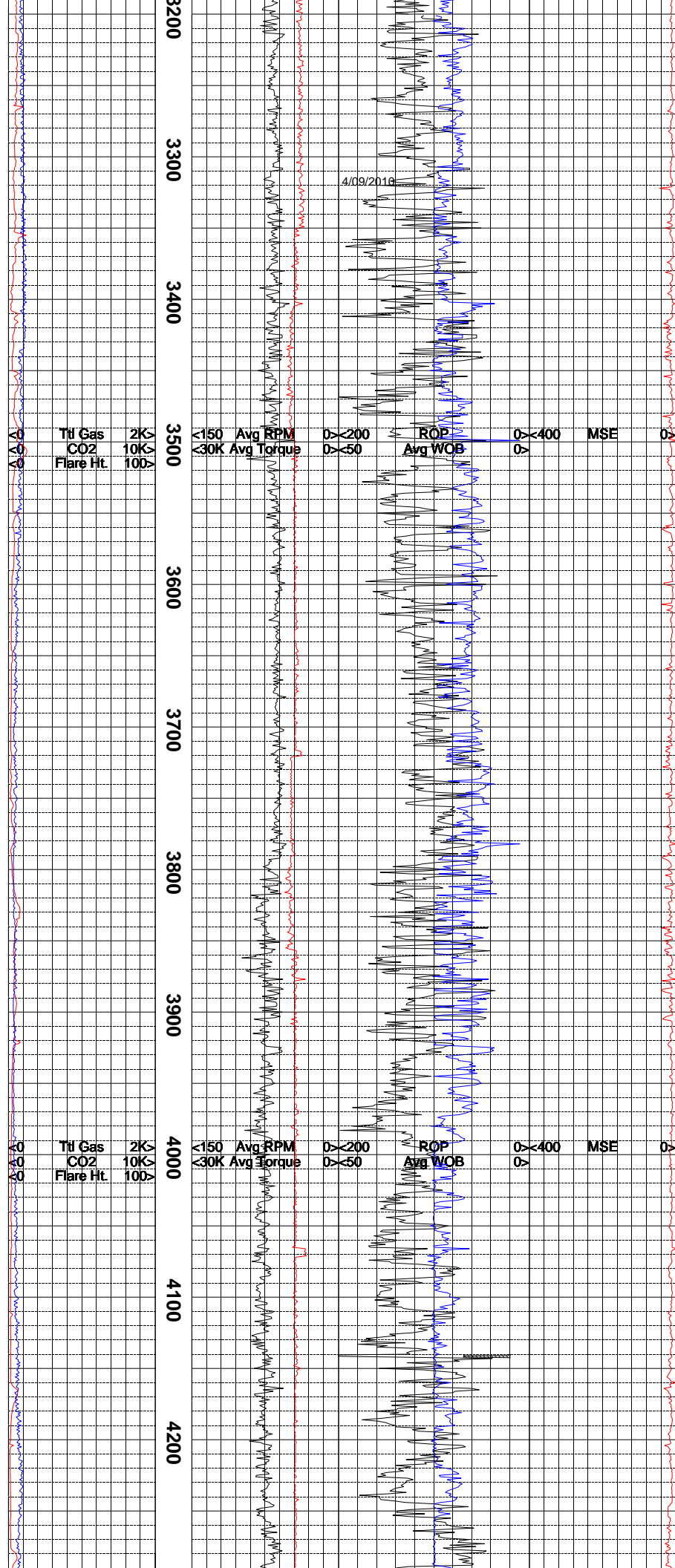
4/7/2010

Ttl Gas 100>
CO2 10K>
Flare Ht. 100>

<150 Avg RPM 0> <200 ROP 0> <400 MSE 0>
<30K Avg Torque 0> <50 Avg WOB 0>





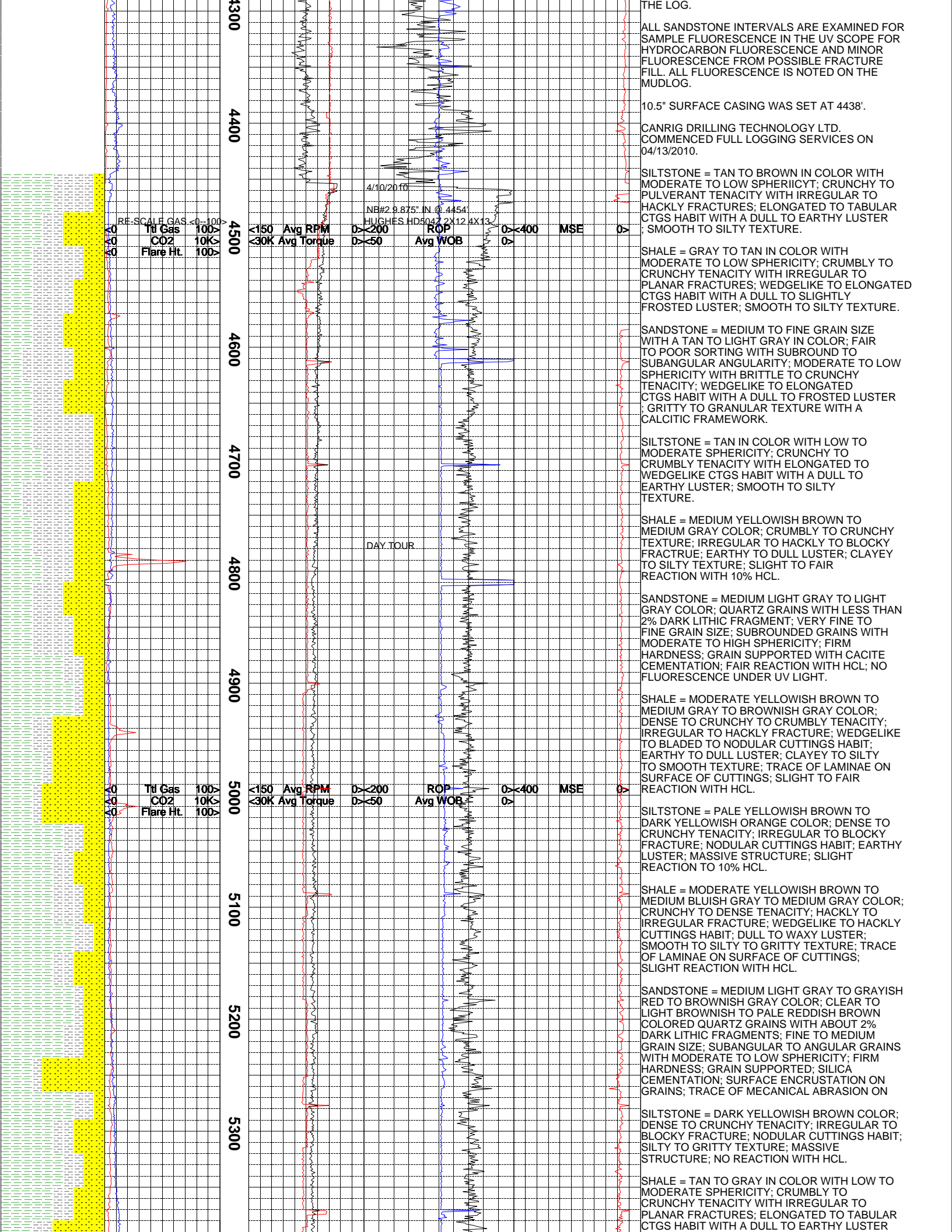


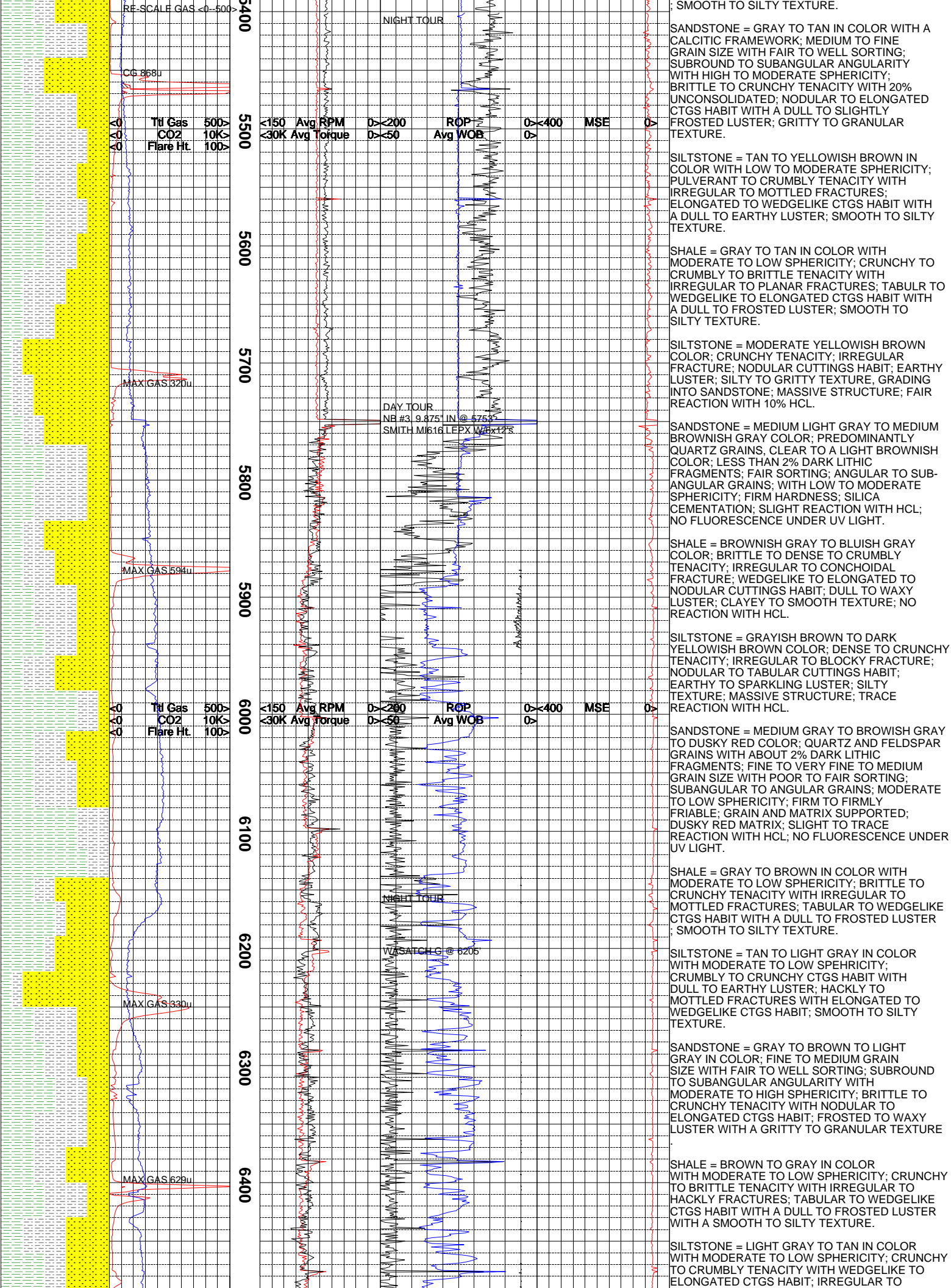
ALL ROCK COLORS ARE REFERENCED TO THE GSA ROCK COLOR CHART. ROCK CONSTITUENTS ARE DESCRIBED WET AND LISTED IN ORDER OF MOST ABUNDANT TO LEAST ABUNDANT WITH RESPECT TO PERCENTAGE IN SAMPLE. DEPTH IS REFERENCED TO RKB.

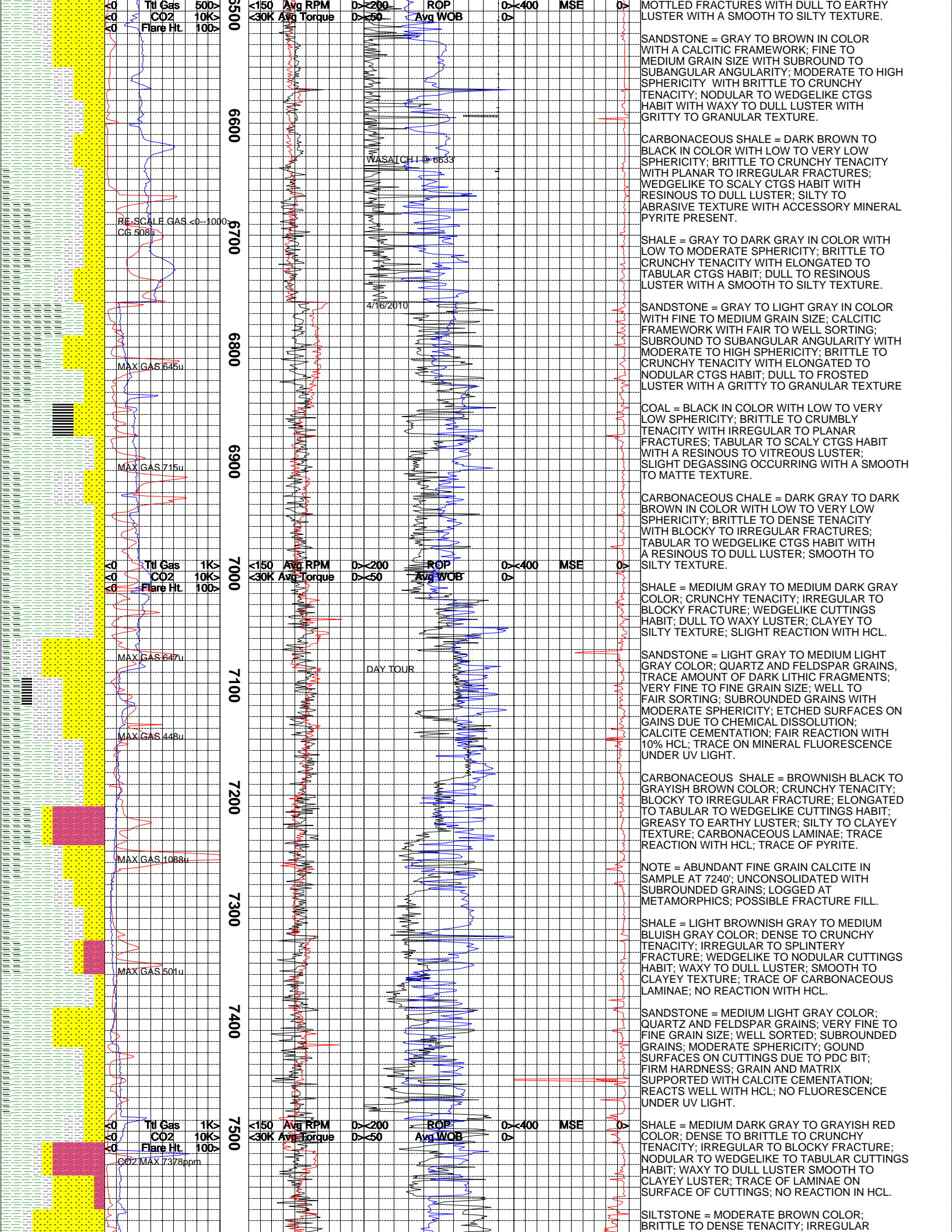
CONNECTION GASES AS WELL AS TRIP GASES AND DOWNTIME GASES ARE NOTED ON THE LOG LARGE CONNECTION GASES WHICH APPEAR ON THE MUDLOG USUALLY REFLECT UPHOLE GAS INTERVALS BLEEDING INTO THE BORE HOLE DURING CONNECTIONS.

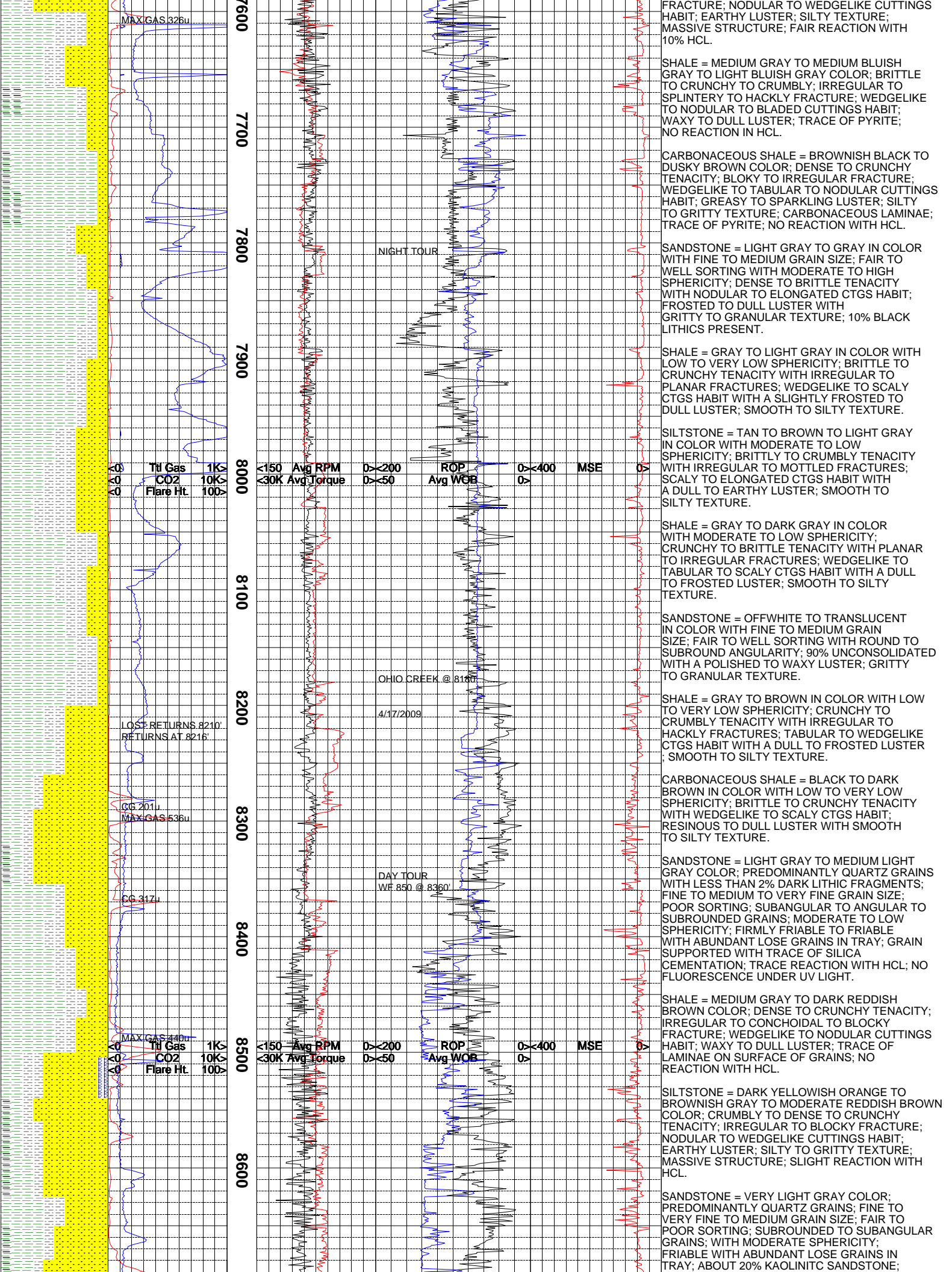
GAS CHROMATOGRAPHY EQUIPMENT IS CALIBRATED TO A TEST GAS COMPOSED OF:
METHANE = 10000 PPM
ETHANE = 1000 PPM
PROPANE = 1000 PPM
I-BUTANE = 1000 PPM
N-BUTANE = 1000 PPM
I-PENTANE = 1000 PPM
N-PENTANE = 1000 PPM

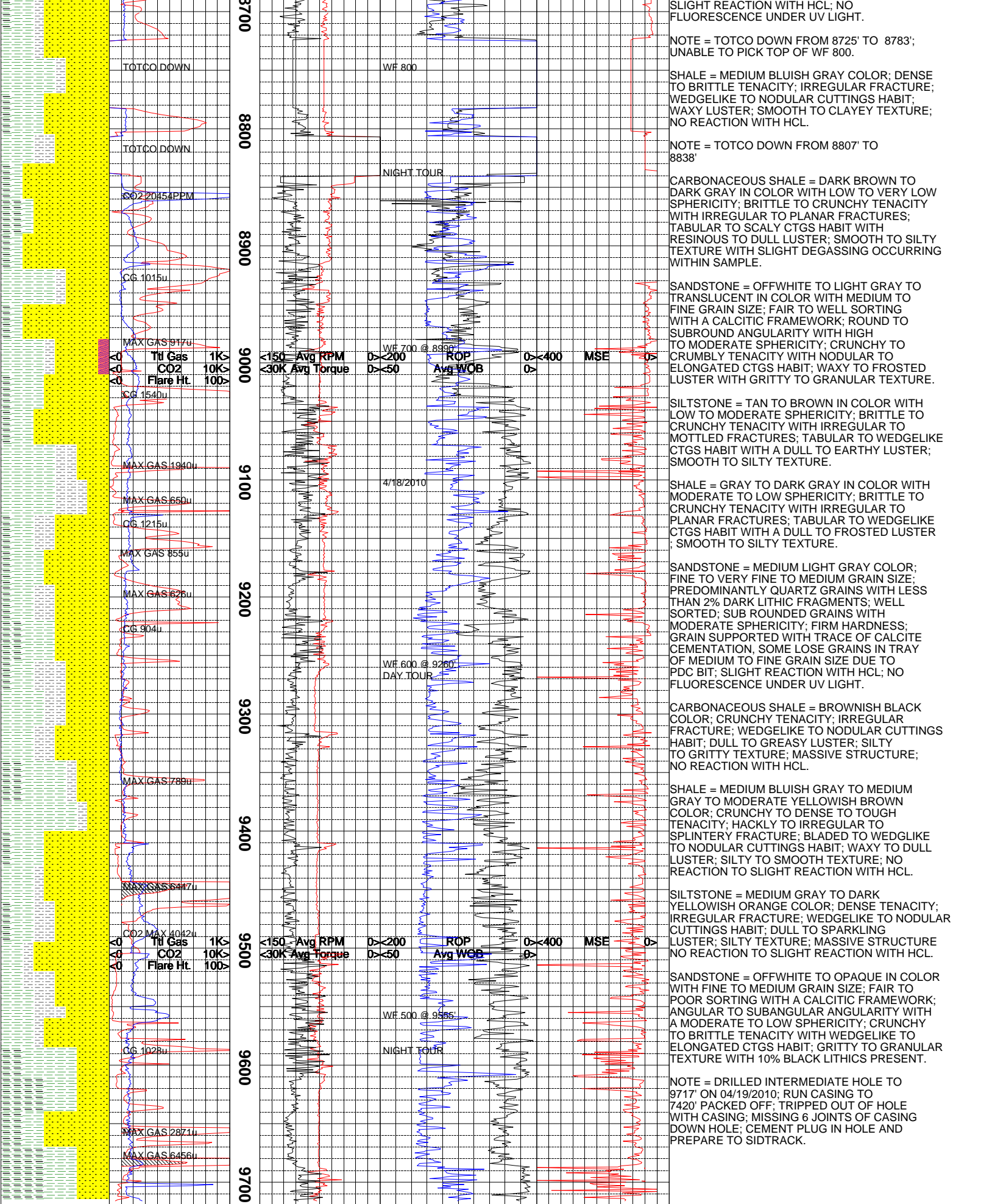
WHEN THE MUD IS RUN THROUGH THE MGS (MUD GAS SEPERATOR) THE INTERVAL IS MARKED ON THE LOG IN THE SLIDE COLUMN AND NOTED ON











The log data, interpretations and recommendation provided by Epoch are inferences and assumptions based on measurements of drilling fluids. Such inferences and assumptions are not infallible and reasonable professionals may differ. Epoch does not represent or warrant the accuracy, correctness or completeness of any log data, interpretations, recommendations or information provided by Epoch, its officers, agents or employees. Epoch does not and cannot guarantee the accuracy of any such interpretation of the log data, interpretations or recommendations and Company is fully responsible for all decisions and actions it takes based on such log data, interpretations and recommendations.

