

# **EOG Resources, Inc.**

**Weld County, CO**

**Sec. 18-T11N-R62W**

**Garden Creek 11-18H**

**Plan A**

**Plan: Plan A rev0**

## **Sperry Drilling Services**

### **Proposal Report**

**19 October, 2010**

Well Coordinates: 579,167.19 N, 2,316,323.14 E (40° 55' 03.38" N, 104° 21' 19.77" W)  
Ground Level: 5,234.00 ft

Local Coordinate Origin:	Centered on Well Garden Creek 11-18H
Viewing Datum:	RKB 21' @ 5255.00ft (SST 56)
TVDs to System:	N
North Reference:	True
Unit System:	API - US Survey Feet - Custom
Geodetic Scale Factor Applied	
Version: 2003.16 Build: 43I	

**HALLIBURTON**

**Plan Report for Garden Creek 11-18H - Plan A rev0**

Measured Depth (ft)	Inclination (°)	Azimuth (°)	Vertical Depth (ft)	+N/-S (ft)	+E/-W (ft)	Vertical Section (ft)	Dogleg Rate (°/100ft)	Build Rate (°/100ft)	Turn Rate (°/100ft)	Toolface Azimuth (°)
0.00	0.00	0.00	0.00	0.00	0.00	0.00	0.00	0.00	0.00	0.00
21.00	0.00	0.00	21.00	0.00	0.00	0.00	0.00	0.00	0.00	0.00
<b>White River</b>										
100.00	0.00	0.00	100.00	0.00	0.00	0.00	0.00	0.00	0.00	0.00
200.00	0.00	0.00	200.00	0.00	0.00	0.00	0.00	0.00	0.00	0.00
300.00	0.00	0.00	300.00	0.00	0.00	0.00	0.00	0.00	0.00	0.00
400.00	0.00	0.00	400.00	0.00	0.00	0.00	0.00	0.00	0.00	0.00
500.00	0.00	0.00	500.00	0.00	0.00	0.00	0.00	0.00	0.00	0.00
600.00	0.00	0.00	600.00	0.00	0.00	0.00	0.00	0.00	0.00	0.00
700.00	0.00	0.00	700.00	0.00	0.00	0.00	0.00	0.00	0.00	0.00
713.00	0.00	0.00	713.00	0.00	0.00	0.00	0.00	0.00	0.00	0.00
<b>Fox Hills</b>										
800.00	0.00	0.00	800.00	0.00	0.00	0.00	0.00	0.00	0.00	0.00
900.00	0.00	0.00	900.00	0.00	0.00	0.00	0.00	0.00	0.00	0.00
975.00	0.00	0.00	975.00	0.00	0.00	0.00	0.00	0.00	0.00	0.00
<b>Pierre Shale</b>										
1,000.00	0.00	0.00	1,000.00	0.00	0.00	0.00	0.00	0.00	0.00	0.00
1,100.00	0.00	0.00	1,100.00	0.00	0.00	0.00	0.00	0.00	0.00	0.00
1,200.00	0.00	0.00	1,200.00	0.00	0.00	0.00	0.00	0.00	0.00	0.00
1,300.00	0.00	0.00	1,300.00	0.00	0.00	0.00	0.00	0.00	0.00	0.00
1,351.00	0.00	0.00	1,351.00	0.00	0.00	0.00	0.00	0.00	0.00	0.00
<b>9 5/8" Casing</b>										
1,400.00	0.00	0.00	1,400.00	0.00	0.00	0.00	0.00	0.00	0.00	0.00
1,500.00	0.00	0.00	1,500.00	0.00	0.00	0.00	0.00	0.00	0.00	0.00
1,600.00	0.00	0.00	1,600.00	0.00	0.00	0.00	0.00	0.00	0.00	0.00
1,700.00	0.00	0.00	1,700.00	0.00	0.00	0.00	0.00	0.00	0.00	0.00
1,800.00	0.00	0.00	1,800.00	0.00	0.00	0.00	0.00	0.00	0.00	0.00
1,900.00	0.00	0.00	1,900.00	0.00	0.00	0.00	0.00	0.00	0.00	0.00
2,000.00	0.00	0.00	2,000.00	0.00	0.00	0.00	0.00	0.00	0.00	0.00
2,100.00	0.00	0.00	2,100.00	0.00	0.00	0.00	0.00	0.00	0.00	0.00
2,200.00	0.00	0.00	2,200.00	0.00	0.00	0.00	0.00	0.00	0.00	0.00
2,300.00	0.00	0.00	2,300.00	0.00	0.00	0.00	0.00	0.00	0.00	0.00
2,400.00	0.00	0.00	2,400.00	0.00	0.00	0.00	0.00	0.00	0.00	0.00
2,500.00	0.00	0.00	2,500.00	0.00	0.00	0.00	0.00	0.00	0.00	0.00
2,600.00	0.00	0.00	2,600.00	0.00	0.00	0.00	0.00	0.00	0.00	0.00
2,700.00	0.00	0.00	2,700.00	0.00	0.00	0.00	0.00	0.00	0.00	0.00
2,800.00	0.00	0.00	2,800.00	0.00	0.00	0.00	0.00	0.00	0.00	0.00
2,900.00	0.00	0.00	2,900.00	0.00	0.00	0.00	0.00	0.00	0.00	0.00
3,000.00	0.00	0.00	3,000.00	0.00	0.00	0.00	0.00	0.00	0.00	0.00
3,100.00	0.00	0.00	3,100.00	0.00	0.00	0.00	0.00	0.00	0.00	0.00
3,200.00	0.00	0.00	3,200.00	0.00	0.00	0.00	0.00	0.00	0.00	0.00
3,300.00	0.00	0.00	3,300.00	0.00	0.00	0.00	0.00	0.00	0.00	0.00
3,400.00	0.00	0.00	3,400.00	0.00	0.00	0.00	0.00	0.00	0.00	0.00
3,454.00	0.00	0.00	3,454.00	0.00	0.00	0.00	0.00	0.00	0.00	0.00
<b>Terry SS</b>										
3,500.00	0.00	0.00	3,500.00	0.00	0.00	0.00	0.00	0.00	0.00	0.00
3,600.00	0.00	0.00	3,600.00	0.00	0.00	0.00	0.00	0.00	0.00	0.00
3,700.00	0.00	0.00	3,700.00	0.00	0.00	0.00	0.00	0.00	0.00	0.00
3,800.00	0.00	0.00	3,800.00	0.00	0.00	0.00	0.00	0.00	0.00	0.00
3,900.00	0.00	0.00	3,900.00	0.00	0.00	0.00	0.00	0.00	0.00	0.00
4,000.00	0.00	0.00	4,000.00	0.00	0.00	0.00	0.00	0.00	0.00	0.00
4,100.00	0.00	0.00	4,100.00	0.00	0.00	0.00	0.00	0.00	0.00	0.00
4,104.00	0.00	0.00	4,104.00	0.00	0.00	0.00	0.00	0.00	0.00	0.00
<b>Hygiene</b>										
4,200.00	0.00	0.00	4,200.00	0.00	0.00	0.00	0.00	0.00	0.00	0.00
4,300.00	0.00	0.00	4,300.00	0.00	0.00	0.00	0.00	0.00	0.00	0.00
4,400.00	0.00	0.00	4,400.00	0.00	0.00	0.00	0.00	0.00	0.00	0.00
4,500.00	0.00	0.00	4,500.00	0.00	0.00	0.00	0.00	0.00	0.00	0.00

**Plan Report for Garden Creek 11-18H - Plan A rev0**

Measured Depth (ft)	Inclination (°)	Azimuth (°)	Vertical Depth (ft)	+N/-S (ft)	+E/-W (ft)	Vertical Section (ft)	Dogleg Rate (°/100ft)	Bulld Rate (°/100ft)	Turn Rate (°/100ft)	Tooface Azimuth (°)
4,600.00	0.00	0.00	4,600.00	0.00	0.00	0.00	0.00	0.00	0.00	0.00
4,700.00	0.00	0.00	4,700.00	0.00	0.00	0.00	0.00	0.00	0.00	0.00
4,767.00	0.00	0.00	4,767.00	0.00	0.00	0.00	0.00	0.00	0.00	0.00
<b>MKR4</b>										
4,800.00	0.00	0.00	4,800.00	0.00	0.00	0.00	0.00	0.00	0.00	0.00
4,900.00	0.00	0.00	4,900.00	0.00	0.00	0.00	0.00	0.00	0.00	0.00
5,000.00	0.00	0.00	5,000.00	0.00	0.00	0.00	0.00	0.00	0.00	0.00
5,100.00	0.00	0.00	5,100.00	0.00	0.00	0.00	0.00	0.00	0.00	0.00
5,200.00	0.00	0.00	5,200.00	0.00	0.00	0.00	0.00	0.00	0.00	0.00
5,300.00	0.00	0.00	5,300.00	0.00	0.00	0.00	0.00	0.00	0.00	0.00
5,400.00	0.00	0.00	5,400.00	0.00	0.00	0.00	0.00	0.00	0.00	0.00
5,500.00	0.00	0.00	5,500.00	0.00	0.00	0.00	0.00	0.00	0.00	0.00
5,600.00	0.00	0.00	5,600.00	0.00	0.00	0.00	0.00	0.00	0.00	0.00
5,700.00	0.00	0.00	5,700.00	0.00	0.00	0.00	0.00	0.00	0.00	0.00
5,800.00	0.00	0.00	5,800.00	0.00	0.00	0.00	0.00	0.00	0.00	0.00
5,900.00	0.00	0.00	5,900.00	0.00	0.00	0.00	0.00	0.00	0.00	0.00
6,000.00	0.00	0.00	6,000.00	0.00	0.00	0.00	0.00	0.00	0.00	0.00
6,100.00	0.00	0.00	6,100.00	0.00	0.00	0.00	0.00	0.00	0.00	0.00
6,200.00	0.00	0.00	6,200.00	0.00	0.00	0.00	0.00	0.00	0.00	0.00
6,223.00	0.00	0.00	6,223.00	0.00	0.00	0.00	0.00	0.00	0.00	0.00
<b>MKR6</b>										
6,300.00	0.00	0.00	6,300.00	0.00	0.00	0.00	0.00	0.00	0.00	0.00
6,400.00	0.00	0.00	6,400.00	0.00	0.00	0.00	0.00	0.00	0.00	0.00
6,500.00	0.00	0.00	6,500.00	0.00	0.00	0.00	0.00	0.00	0.00	0.00
6,600.00	0.00	0.00	6,600.00	0.00	0.00	0.00	0.00	0.00	0.00	0.00
6,700.00	0.00	0.00	6,700.00	0.00	0.00	0.00	0.00	0.00	0.00	0.00
6,720.83	0.00	0.00	6,720.83	0.00	0.00	0.00	0.00	0.00	0.00	0.00
<b>Kick Off Point at 6720.83 ft</b>										
6,800.00	9.50	319.53	6,799.64	4.98	-4.25	6.55	12.00	12.00	0.00	319.53
6,900.00	21.50	319.53	6,895.82	25.28	-21.56	33.22	12.00	12.00	0.00	0.00
7,000.00	33.50	319.53	6,984.36	60.34	-51.48	79.32	12.00	12.00	0.00	0.00
7,020.00	35.90	319.53	7,000.80	69.00	-58.87	90.70	12.00	12.00	0.00	0.00
<b>Bulld Rate = 12.00°/100 ft</b>										
7,089.58	44.25	319.53	7,054.00	103.05	-87.92	135.46	12.00	12.00	0.00	0.00
<b>Sharon Springs</b>										
7,100.00	45.50	319.53	7,061.38	108.64	-92.69	142.81	12.00	12.00	0.00	0.00
7,182.76	55.43	319.53	7,114.00	157.14	-134.07	206.56	12.00	12.00	0.00	0.00
<b>Niobrara</b>										
7,200.00	57.50	319.53	7,123.52	168.07	-143.39	220.93	12.00	12.00	0.00	0.00
7,300.00	69.50	319.53	7,168.06	236.03	-201.37	310.26	12.00	12.00	0.00	0.00
7,338.23	74.09	319.53	7,180.00	263.65	-224.94	346.56	12.00	12.00	0.00	0.00
<b>NBRR B Chik</b>										
7,387.26	79.97	319.53	7,191.00	299.98	-255.93	394.32	12.00	12.00	0.00	0.00
<b>The Green Clean</b>										
7,400.00	81.50	319.53	7,193.05	309.54	-264.09	406.89	12.00	12.00	0.00	0.00
7,454.16	88.00	319.53	7,198.00	350.55	-299.08	460.80	12.00	12.00	0.00	0.00
<b>End Build at 7454.16 ft - ICP - 7" Casing</b>										
7,500.00	88.00	319.53	7,199.60	385.40	-328.82	506.61	0.00	0.00	0.00	0.00
7,600.00	88.00	319.53	7,203.09	461.43	-393.68	606.55	0.00	0.00	0.00	0.00
7,678.66	88.00	319.53	7,205.84	521.23	-444.70	685.16	0.00	0.00	0.00	0.00
<b>Begin Build at 7678.66 ft</b>										
7,700.00	88.64	319.53	7,206.46	537.46	-458.55	706.49	3.00	3.00	0.00	0.00
7,710.00	88.94	319.53	7,206.68	545.07	-465.04	716.49	3.00	3.00	0.00	0.00
<b>Bulld Rate = 3.00°/100 ft</b>										
7,745.33	90.00	319.53	7,207.00	571.94	-487.97	751.82	3.00	3.00	0.00	0.00
<b>End Build at 7745.33 ft - B CHLK TGT</b>										
7,800.00	90.00	319.53	7,207.00	613.53	-523.45	806.49	0.00	0.00	0.00	0.00
7,900.00	90.00	319.53	7,207.00	689.61	-588.36	906.49	0.00	0.00	0.00	0.00

**Plan Report for Garden Creek 11-18H - Plan A rev0**

Measured Depth (ft)	Inclination (°)	Azimuth (°)	Vertical Depth (ft)	+N/-S (ft)	+E/-W (ft)	Vertical Section (ft)	Dogleg Rate (°/100ft)	Build Rate (°/100ft)	Turn Rate (°/100ft)	Toolface Azimuth (°)
8,000.00	90.00	319.53	7,207.00	765.68	-653.26	1,006.49	0.00	0.00	0.00	0.00
8,100.00	90.00	319.53	7,207.00	841.76	-718.17	1,106.49	0.00	0.00	0.00	0.00
8,200.00	90.00	319.53	7,207.00	917.83	-783.07	1,206.49	0.00	0.00	0.00	0.00
8,300.00	90.00	319.53	7,207.00	993.91	-847.98	1,306.49	0.00	0.00	0.00	0.00
8,400.00	90.00	319.53	7,207.00	1,069.98	-912.88	1,406.49	0.00	0.00	0.00	0.00
8,500.00	90.00	319.53	7,207.00	1,146.05	-977.79	1,506.49	0.00	0.00	0.00	0.00
8,600.00	90.00	319.53	7,207.00	1,222.13	-1,042.69	1,606.49	0.00	0.00	0.00	0.00
8,700.00	90.00	319.53	7,207.00	1,298.20	-1,107.60	1,706.49	0.00	0.00	0.00	0.00
8,800.00	90.00	319.53	7,207.00	1,374.28	-1,172.50	1,806.49	0.00	0.00	0.00	0.00
8,900.00	90.00	319.53	7,207.00	1,450.35	-1,237.41	1,906.49	0.00	0.00	0.00	0.00
9,000.00	90.00	319.53	7,207.00	1,526.43	-1,302.31	2,006.49	0.00	0.00	0.00	0.00
9,100.00	90.00	319.53	7,207.00	1,602.50	-1,367.22	2,106.49	0.00	0.00	0.00	0.00
9,200.00	90.00	319.53	7,207.00	1,678.58	-1,432.12	2,206.49	0.00	0.00	0.00	0.00
9,300.00	90.00	319.53	7,207.00	1,754.65	-1,497.03	2,306.49	0.00	0.00	0.00	0.00
9,400.00	90.00	319.53	7,207.00	1,830.73	-1,561.93	2,406.49	0.00	0.00	0.00	0.00
9,500.00	90.00	319.53	7,207.00	1,906.80	-1,626.84	2,506.49	0.00	0.00	0.00	0.00
9,600.00	90.00	319.53	7,207.00	1,982.88	-1,691.74	2,606.49	0.00	0.00	0.00	0.00
9,700.00	90.00	319.53	7,207.00	2,058.95	-1,756.65	2,706.49	0.00	0.00	0.00	0.00
9,800.00	90.00	319.53	7,207.00	2,135.02	-1,821.55	2,806.49	0.00	0.00	0.00	0.00
9,900.00	90.00	319.53	7,207.00	2,211.10	-1,886.46	2,906.49	0.00	0.00	0.00	0.00
10,000.00	90.00	319.53	7,207.00	2,287.17	-1,951.36	3,006.49	0.00	0.00	0.00	0.00
10,100.00	90.00	319.53	7,207.00	2,363.25	-2,016.27	3,106.49	0.00	0.00	0.00	0.00
10,200.00	90.00	319.53	7,207.00	2,439.32	-2,081.17	3,206.49	0.00	0.00	0.00	0.00
10,300.00	90.00	319.53	7,207.00	2,515.40	-2,146.08	3,306.49	0.00	0.00	0.00	0.00
<b>Hold Angle 90.00°</b>										
10,400.00	90.00	319.53	7,207.00	2,591.47	-2,210.98	3,406.49	0.00	0.00	0.00	0.00
10,500.00	90.00	319.53	7,207.00	2,667.55	-2,275.89	3,506.49	0.00	0.00	0.00	0.00
10,600.00	90.00	319.53	7,207.00	2,743.62	-2,340.79	3,606.49	0.00	0.00	0.00	0.00
10,700.00	90.00	319.53	7,207.00	2,819.70	-2,405.70	3,706.49	0.00	0.00	0.00	0.00
10,800.00	90.00	319.53	7,207.00	2,895.77	-2,470.60	3,806.49	0.00	0.00	0.00	0.00
10,900.00	90.00	319.53	7,207.00	2,971.84	-2,535.51	3,906.49	0.00	0.00	0.00	0.00
11,000.00	90.00	319.53	7,207.00	3,047.92	-2,600.41	4,006.49	0.00	0.00	0.00	0.00
11,100.00	90.00	319.53	7,207.00	3,123.99	-2,665.32	4,106.49	0.00	0.00	0.00	0.00
11,200.00	90.00	319.53	7,207.00	3,200.07	-2,730.22	4,206.49	0.00	0.00	0.00	0.00
11,300.00	90.00	319.53	7,207.00	3,276.14	-2,795.13	4,306.49	0.00	0.00	0.00	0.00
11,400.00	90.00	319.53	7,207.00	3,352.22	-2,860.03	4,406.49	0.00	0.00	0.00	0.00
11,500.00	90.00	319.53	7,207.00	3,428.29	-2,924.94	4,506.49	0.00	0.00	0.00	0.00
11,600.00	90.00	319.53	7,207.00	3,504.37	-2,989.84	4,606.49	0.00	0.00	0.00	0.00
11,700.00	90.00	319.53	7,207.00	3,580.44	-3,054.75	4,706.49	0.00	0.00	0.00	0.00
11,800.00	90.00	319.53	7,207.00	3,656.52	-3,119.65	4,806.49	0.00	0.00	0.00	0.00
11,900.00	90.00	319.53	7,207.00	3,732.59	-3,184.56	4,906.49	0.00	0.00	0.00	0.00
12,000.00	90.00	319.53	7,207.00	3,808.67	-3,249.46	5,006.49	0.00	0.00	0.00	0.00
12,100.00	90.00	319.53	7,207.00	3,884.74	-3,314.37	5,106.49	0.00	0.00	0.00	0.00
12,103.47	90.00	319.53	7,207.00	3,887.36	-3,316.64	5,109.96	0.00	0.00	0.00	0.00
<b>Garden Creek 11-18H Plan A0 BHL</b>										

**Plan Report for Garden Creek 11-18H - Plan A rev0****Plan Annotations**

Measured Depth (ft)	Vertical Depth (ft)	Local Coordinates		Comment
		+N/-S (ft)	+E/-W (ft)	
6,720.83	6,720.83	0.00	0.00	Kick Off Point at 6720.83 ft
7,020.00	7,000.80	69.00	-58.87	Build Rate = 12.00°/100 ft
7,454.16	7,198.00	350.55	-299.08	End Build at 7454.16 ft
7,678.66	7,205.84	521.23	-444.70	Begin Build at 7678.66 ft
7,710.00	7,206.68	545.07	-465.04	Build Rate = 3.00°/100 ft
7,745.33	7,207.00	571.94	-487.97	End Build at 7745.33 ft
10,300.00	7,207.00	2,515.40	-2,146.08	Hold Angle 90.00°
12,103.47	7,207.00	3,887.36	-3,316.64	Total Depth at 12103.47 ft

**Vertical Section Information**

Angle Type	Target	Azimuth (°)	Origin Type	Origin +N/-S (ft)	Origin +E/-W (ft)	Start TVD (ft)
Target	Garden Creek 11-18H Plan A0 BHL	319.53	Slot	0.00	0.00	7,207.00

**Survey tool program**

From (ft)	To (ft)	Survey/Plan	Survey Tool
0.00	12,103.46	Plan A rev0	MWD

**Casing Details**

Measured Depth (ft)	Vertical Depth (ft)	Name	Casing Diameter (")	Hole Diameter (")
1,351.00	1,351.00	9 5/8" Casing	9-5/8	12-1/4
7,454.16	7,198.00	7" Casing	7	7-1/2

**Formation Details**

Measured Depth (ft)	Vertical Depth (ft)	Name	Lithology	Dip (°)	Dip Direction (°)
21.00	21.00	White River		0.00	
713.00	713.00	Fox Hills		0.00	
975.00	975.00	Pierre Shale		0.00	
3,454.00	3,454.00	Terry SS		0.00	
4,104.00	4,104.00	Hygiene		0.00	
4,767.00	4,767.00	MKR4		0.00	
6,223.00	6,223.00	MKR6		0.00	
7,089.58	7,054.00	Sharon Springs		0.00	
7,182.76	7,114.00	Niobrara		0.00	
7,338.23	7,180.00	NBRR B Chlk		0.00	
7,387.26	7,191.00	The Green Clean		0.00	
7,454.16	7,198.00	ICP		0.00	
7,745.33	7,207.00	B CHLK TGT		0.00	

---

**Plan Report for Garden Creek 11-18H - Plan A rev0**

---

***Targets associated with this wellbore***

Target Name	TVD (ft)	+N/-S (ft)	+E/-W (ft)	Shape
Garden Creek 11-18H Section Lines	0.00	0.00	0.00	Polygon
Garden Creek 11-18H Setbacks	0.00	0.00	0.00	Polygon
Garden Creek 11-18H Plan A0 BHL	7,207.00	3,887.36	-3,316.64	Circle

**North Reference Sheet for Sec. 18-T11N-R62W - Garden Creek 11-18H - Plan A**

All data is in US Feet unless otherwise stated. Directions and Coordinates are relative to True North Reference.

Vertical Depths are relative to RKB 21' @ 5255.00ft (SST 56). Northing and Easting are relative to Garden Creek 11-18H

Coordinate System is US State Plane 1927 (Exact solution), Colorado North 501 using datum NAD 1927 (NADCON CONUS), ellipsoid Clarke 1866

Projection method is Lambert Conformal Conic (2 parallel)

Central Meridian is -105.50°, Longitude Origin:0° 0' 0.000 E°, Latitude Origin:40° 47' 0.000 N°

False Easting: 2,000,000.00ft, False Northing: 0.00ft, Scale Reduction: 1.00002455

Grid Coordinates of Well: 579,167.19 ft N, 2,316,323.14 ft E

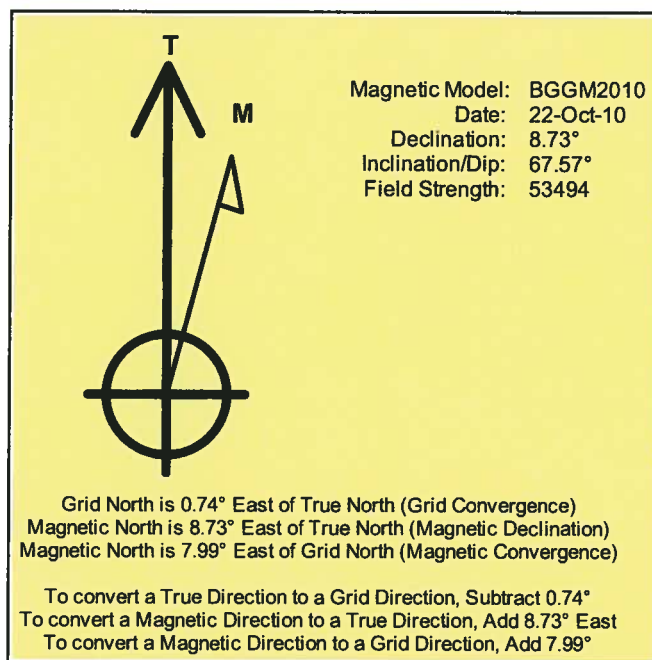
Geographical Coordinates of Well: 40° 55' 03.38" N, 104° 21' 19.77" W

Grid Convergence at Surface is: 0.74°

Based upon Minimum Curvature type calculations, at a Measured Depth of 12,103.47ft

the Bottom Hole Displacement is 5,109.96ft in the Direction of 319.53° (True).

Magnetic Convergence at surface is: -7.99° (22 October 2010, , BGGM2010)



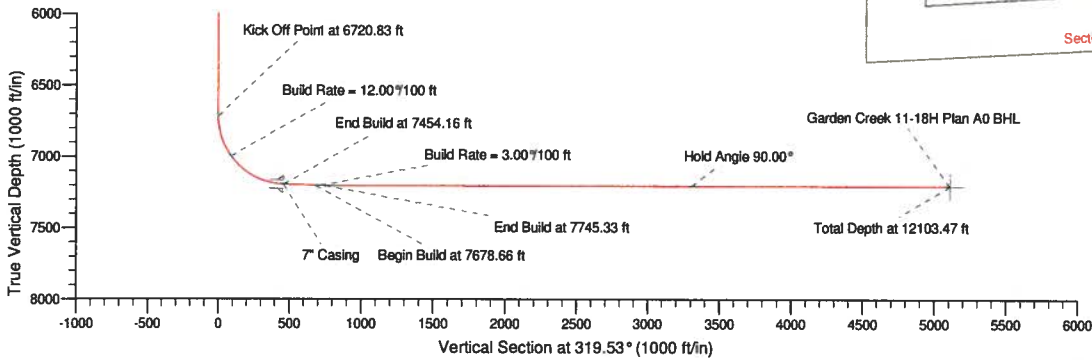
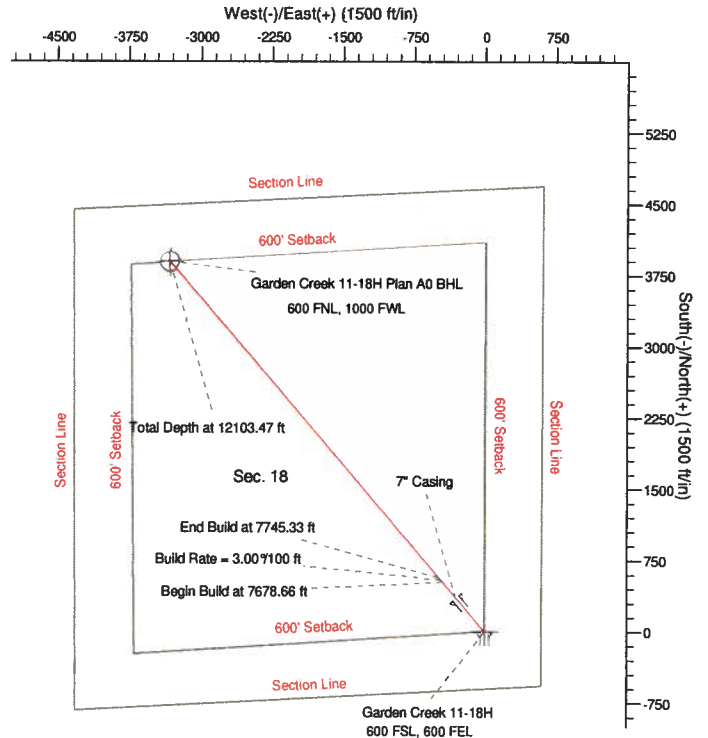
Project: Weld County, CO  
 Site: Sec. 18-T11N-R62W  
 Well: Garden Creek 11-18H  
 Wellbore: Plan A  
 Design: Plan A rev0

# EOG Resources, Inc.

**HALLIBURTON**  
 Sperry Drilling

## SECTION DETAILS

Sec	MD	Inc	Azi	TVD	+N/-S	+E/-W	DLeg	TFace	VSec	Target
1	0.00	0.00	0.00	0.00	0.00	0.00	0.00	0.00	0.00	
2	6720.83	0.00	0.00	6720.83	0.00	0.00	0.00	0.00	0.00	
3	7454.16	88.00	319.53	7198.00	350.55	-299.08	12.00	319.53	480.80	
4	7678.98	88.00	319.53	7205.84	521.24	-444.71	0.00	0.00	885.16	
5	7745.33	90.00	319.53	7207.00	571.94	-487.97	3.00	0.00	751.82	
6	12103.47	90.00	319.53	7207.00	3887.36	-3316.84	0.00	0.00	5109.98	Garden Creek 11-18H Plan A0 BHL



WELL DETAILS: Garden Creek 11-18H			
Ground Level:	5234.00		
Northing	579187.19	Eastings	2318323.14
Latitude	40°55'3.382 N	Longitude	104°21'19.771 W
Plan: Plan A rev0 (Garden Creek 11-18H/Plan A)			
Created By: Scott Wallace	Date: 10/19/2010		
Checked: _____	Date: _____		
Reviewed: _____	Date: _____		
Approved: _____	Date: _____		