



CEMENT BOND LOG

Mesa Wireline

Company ENCANA OIL & GAS (USA) INC.
Well KENYON 4-8-19
Field WATTENBERG
County WELD
State COLORADO

Company ENCANA OIL & GAS (USA) INC.

Well KENYON 4-8-19

Field WATTENBERG

County WELD State COLORADO

Location: API #: 05123327590000

SEC. 19 TWP. 2N RGE. 68W

Permanent Datum GROUND LEVEL Elevation 4993'

Log Measured From KELLY BUSHING = 12'

Drilling Measured From KELLY BUSHING

Other Services
NONE

Elevation
K.B. 5005'
D.F. 5005'
G.L. 4993'

Date 7 MARCH 2011

Run Number ONE

Depth Driller 8440'

Depth Logger 8408'

Bottom Logged Interval 8408'

Top Log Interval 3800'

Open Hole Size 7.875"

Type Fluid WATER

Density / Viscosity ~8.3#

Max. Recorded Temp. N/A

Estimated Cement Top 3990'

Time Well Ready N/A

Time Logger on Bottom 1230

Equipment Number W0061 / CB 01

Location AULT

Recorded By M. BERNATCHEZ

Witnessed By W. HARRISON

Witnessed By

Witnessed By

Witnessed By

Witnessed By

Witnessed By

Witnessed By

Witnessed By

Borehole Record

Run Number Bit From To Size Weight From To

ONE 12.25" SURFACE 800' 800'

TWO 7.875" 800' 8422'

THREE

FOUR

FIVE

SIX

SEVEN

EIGHT

Tubing Record

Run Number Bit From To Size Weight From To

ONE 12.25" SURFACE 800' 800'

TWO 7.875" 800' 8422'

THREE

FOUR

FIVE

SIX

SEVEN

EIGHT

Casing Record

Run Number Bit From To Size Weight From To

ONE 12.25" SURFACE 800' 800'

TWO 7.875" 800' 8422'

THREE

FOUR

FIVE

SIX

SEVEN

EIGHT

Production String

Run Number Bit From To Size Weight From To

ONE 12.25" SURFACE 800' 800'

TWO 7.875" 800' 8422'

THREE

FOUR

FIVE

SIX

SEVEN

EIGHT

Prot. String

Run Number Bit From To Size Weight From To

ONE 12.25" SURFACE 800' 800'

TWO 7.875" 800' 8422'

THREE

FOUR

FIVE

SIX

SEVEN

EIGHT

Surface String

Run Number Bit From To Size Weight From To

ONE 12.25" SURFACE 800' 800'

TWO 7.875" 800' 8422'

THREE

FOUR

FIVE

SIX

SEVEN

EIGHT

Liner

Run Number Bit From To Size Weight From To

ONE 12.25" SURFACE 800' 800'

TWO 7.875" 800' 8422'

THREE

FOUR

FIVE

SIX

SEVEN

EIGHT

<<< Fold Here >>>

All interpretations are opinions based on inferences from electrical or other measurements and we cannot and do not guarantee the accuracy or correctness of any interpretation, and we shall not, except in the case of gross or willful negligence on our part, be liable or responsible for any loss, costs, damages, or expenses incurred or sustained by anyone resulting from any interpretation made by any of our officers, agents or employees. These interpretations are also subject to our general terms and conditions set out in our current Price Schedule.

Comments

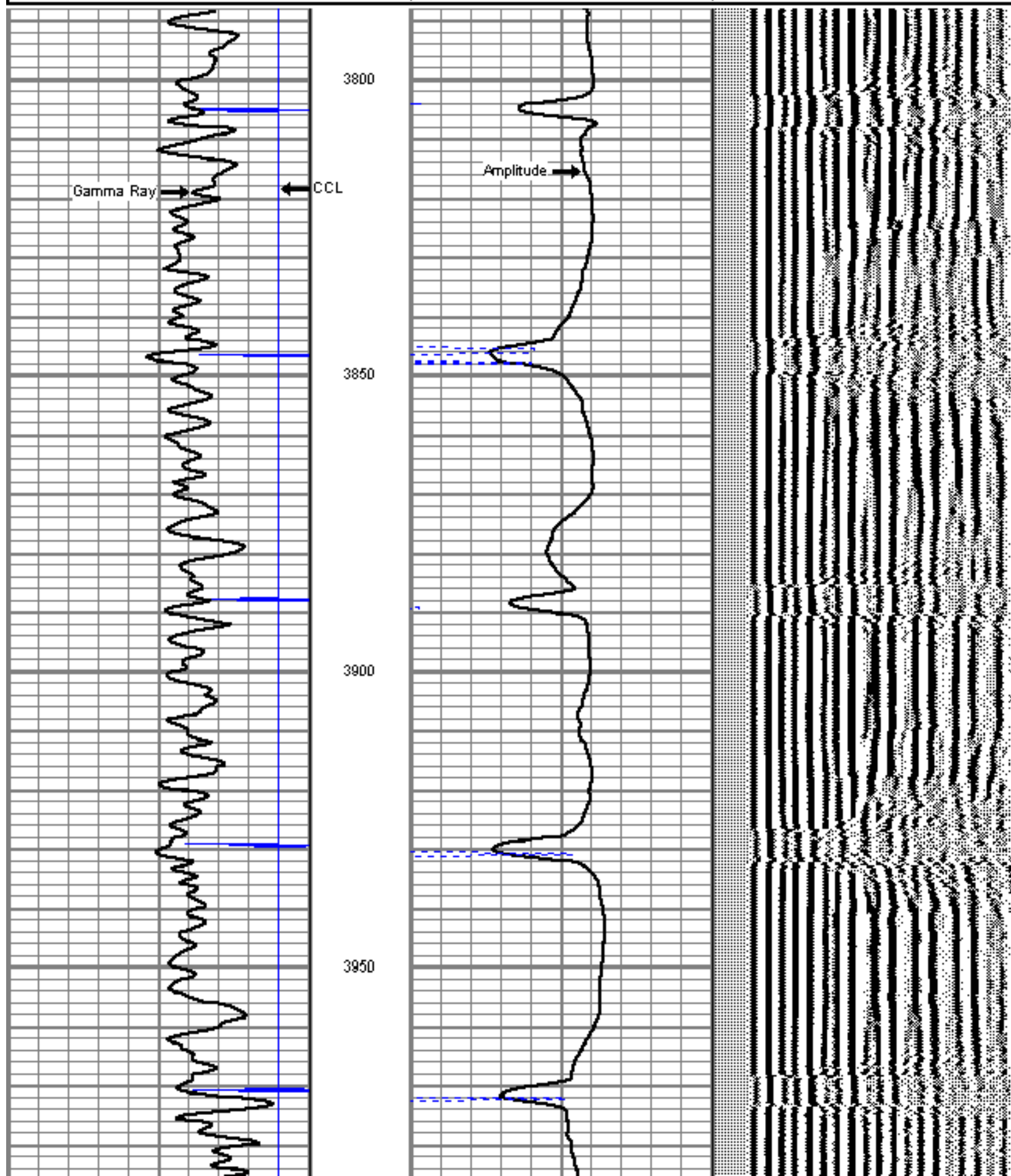
SHORT JOINT: 7445'- 7468'

WE APPRECIATE YOUR BUSINESS, MESA WIRELINE LLC, GRAND JUNCTION CO. (970) 257-0

9	Collar Locator	-1
0	Gamma Ray (GAPI)	150

0	Amplified Amplitude (mV)	10
0	Amplitude (mV)	100
200	Travel Time (usec)	280

200	Variable Density	1200
-----	------------------	------





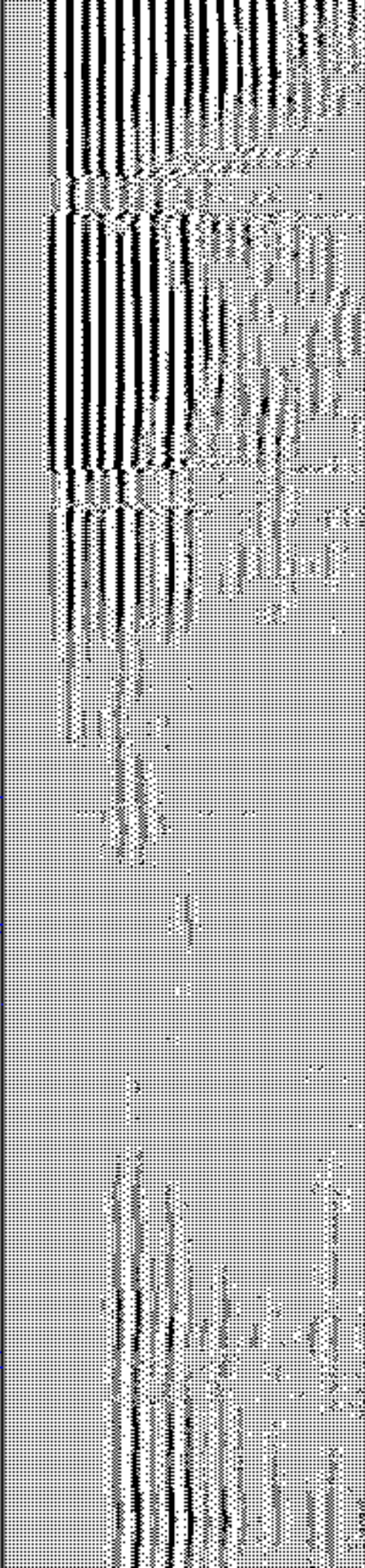
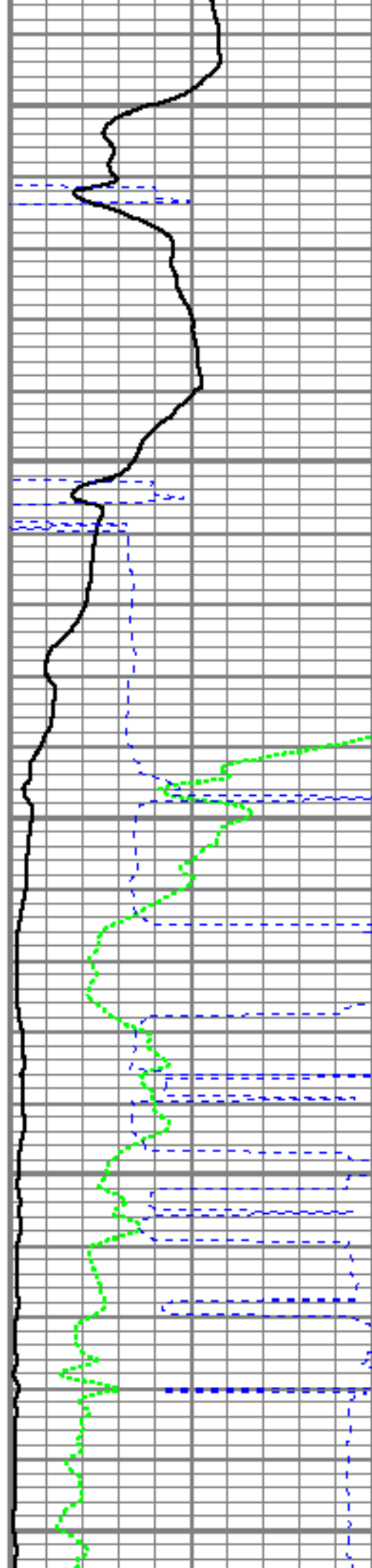
4000

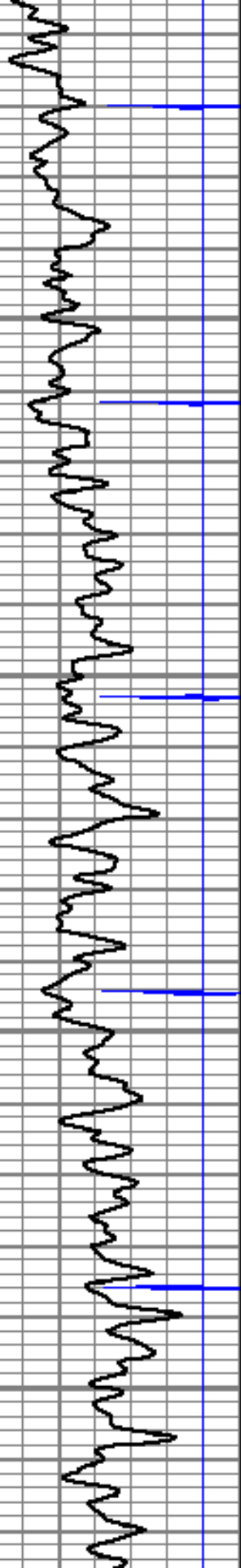
4050

4100

4150

4200



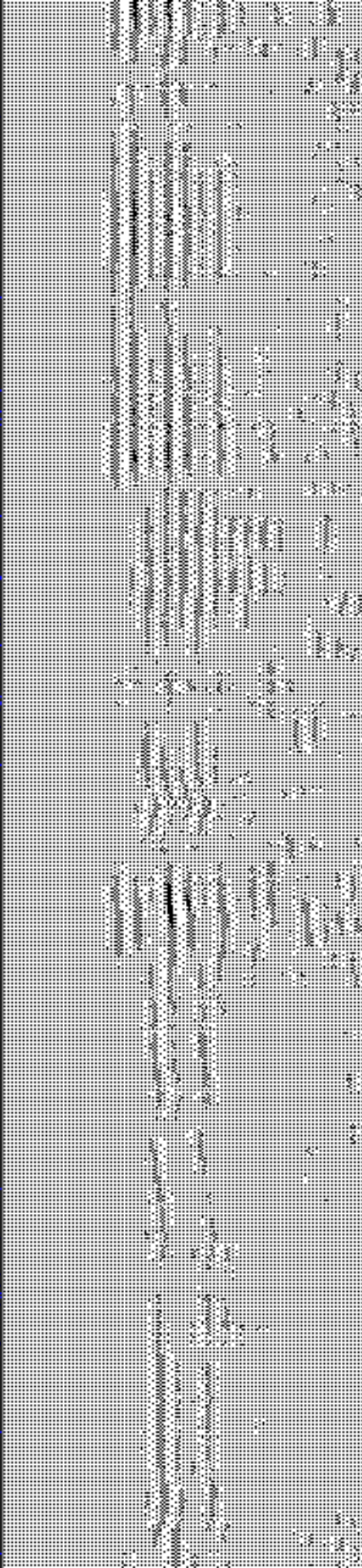
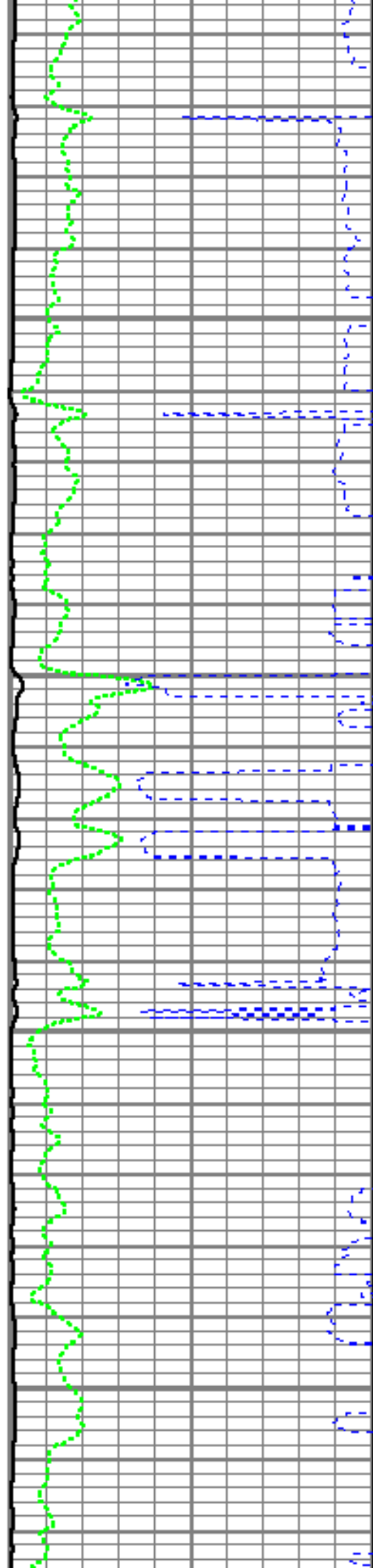


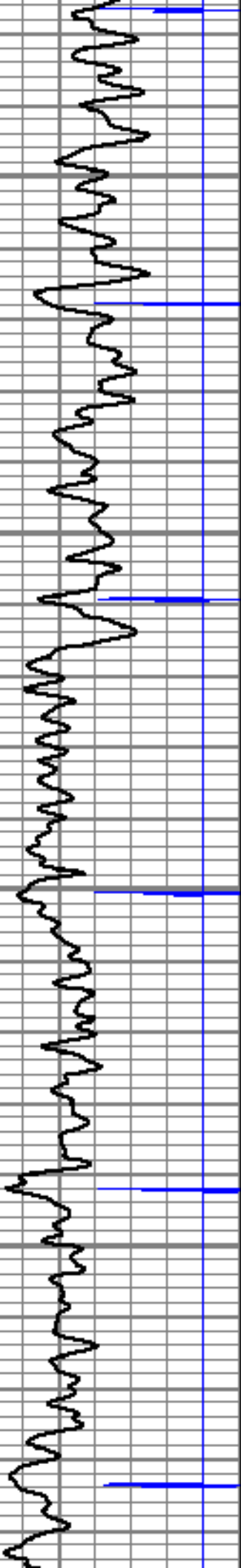
4250

4300

4350

4400



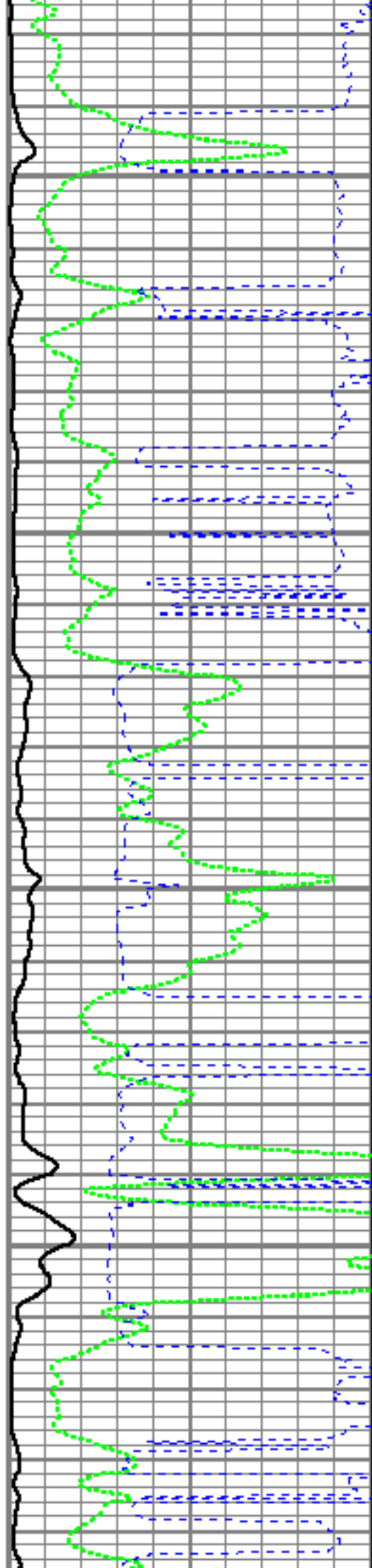


4450

4500

4550

4600



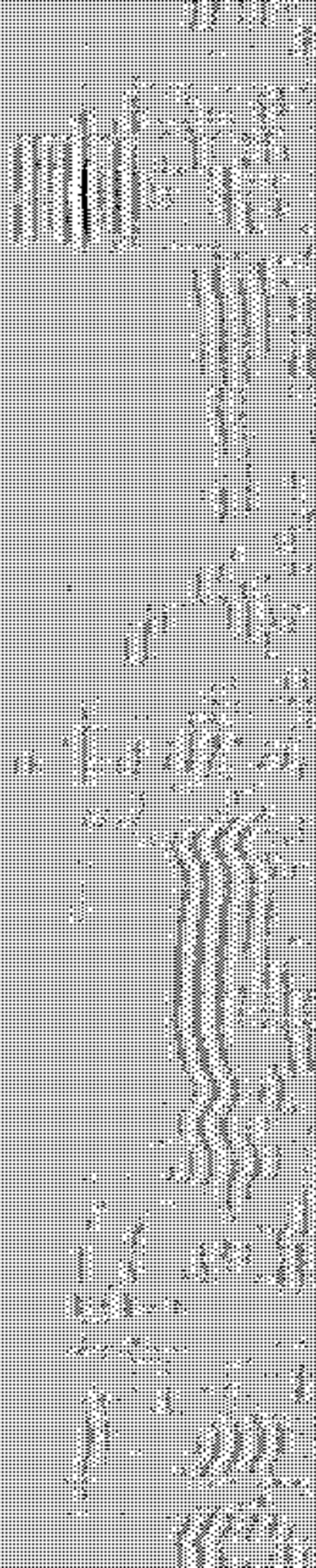
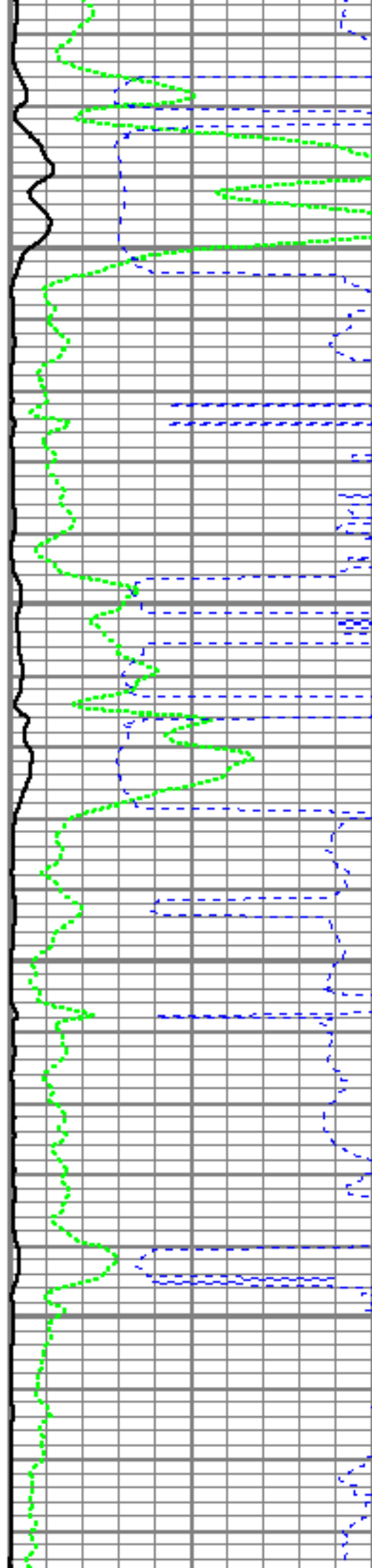


4900

4950

5000

5050





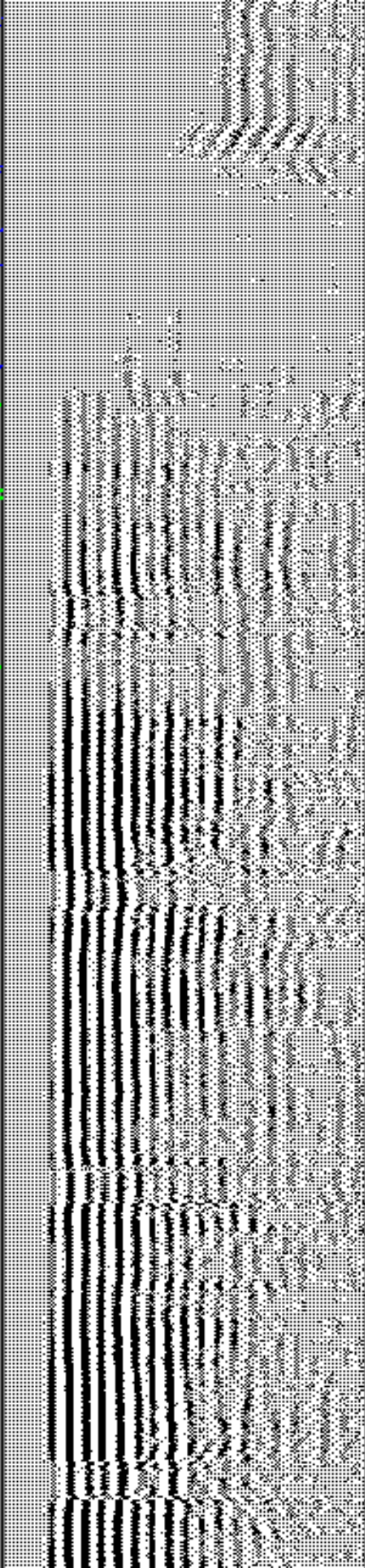
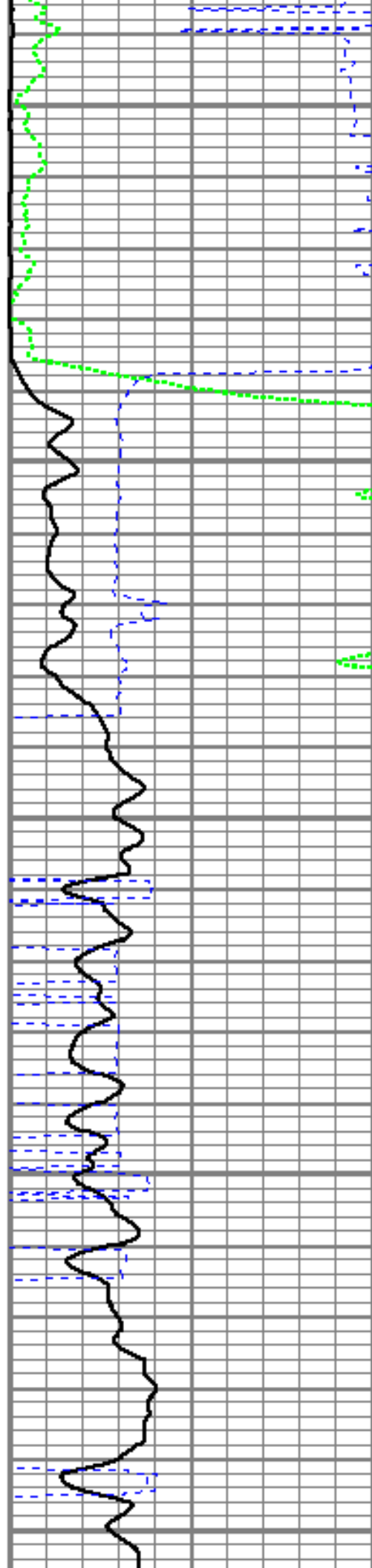
5100

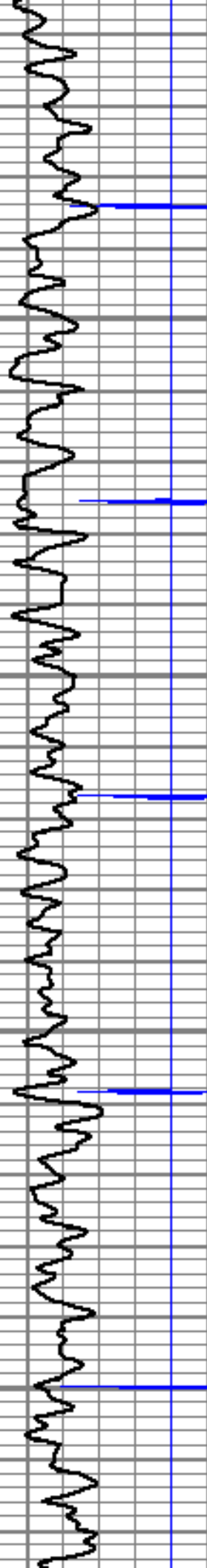
5150

5200

5250

5300



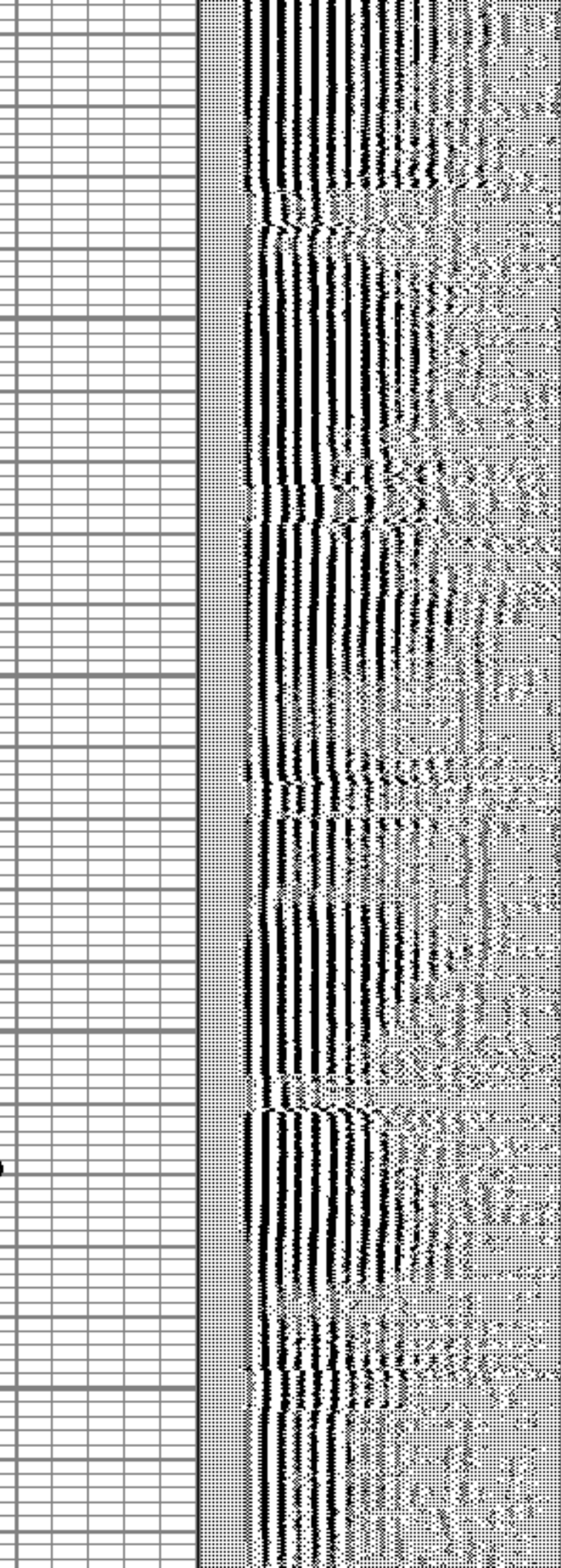
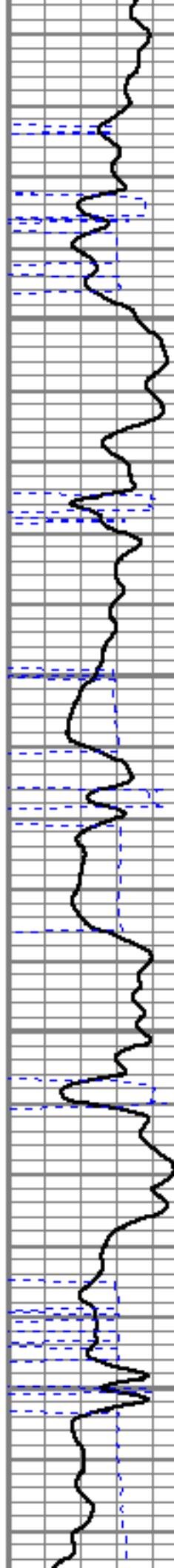


5350

5400

5450

5500



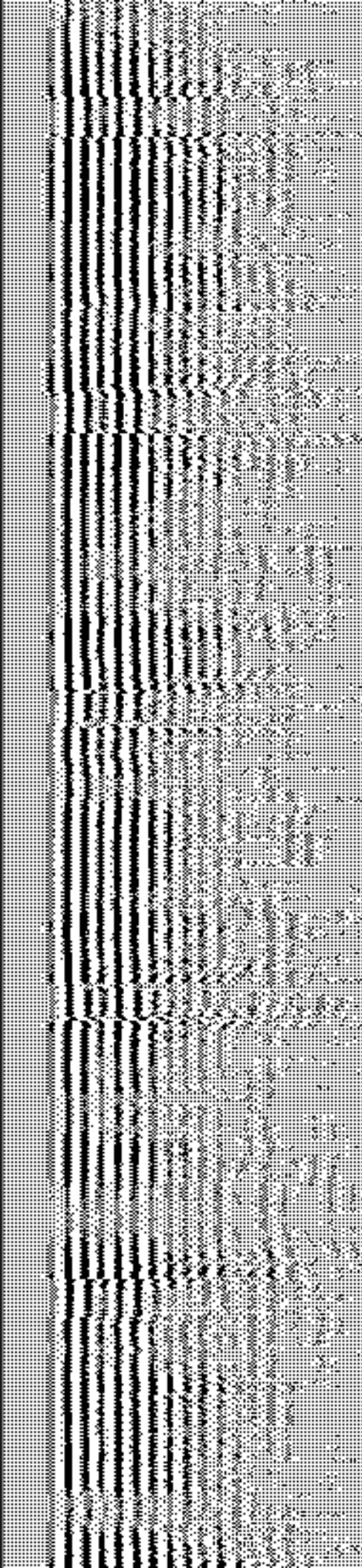
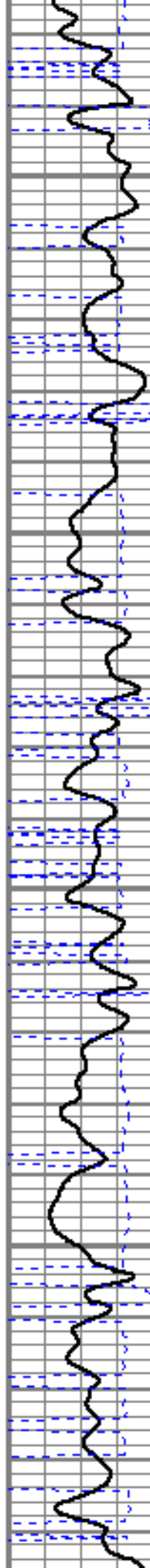


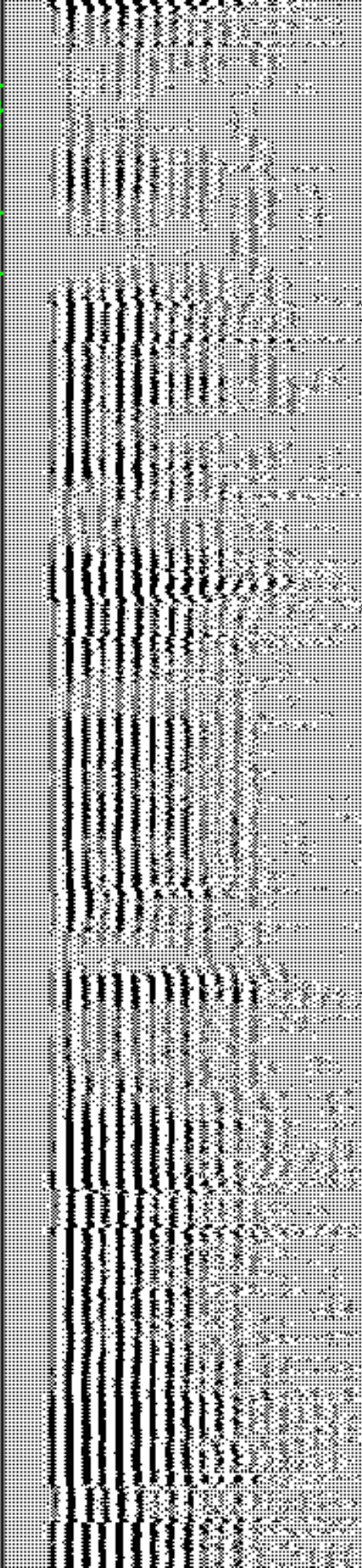
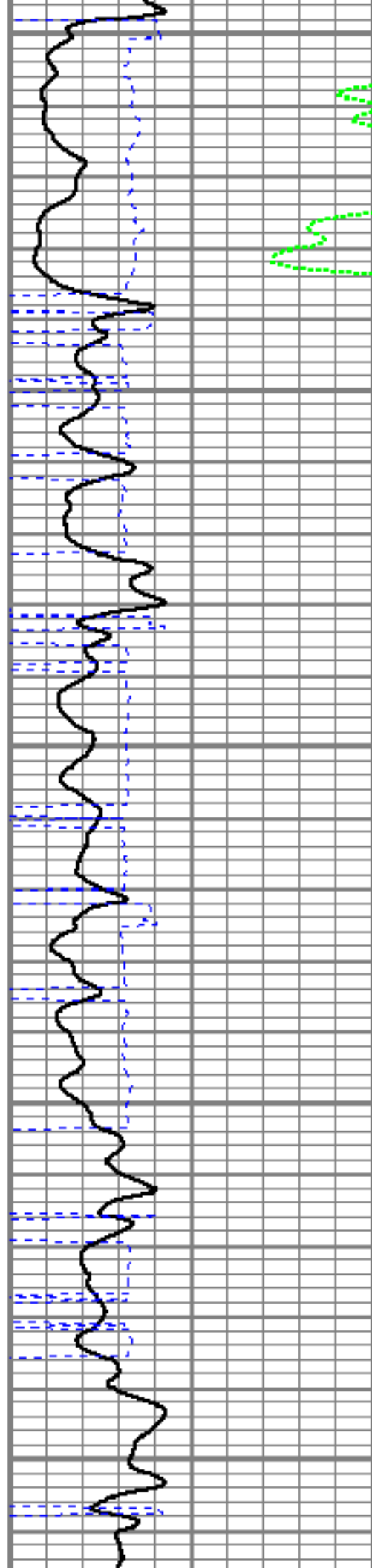
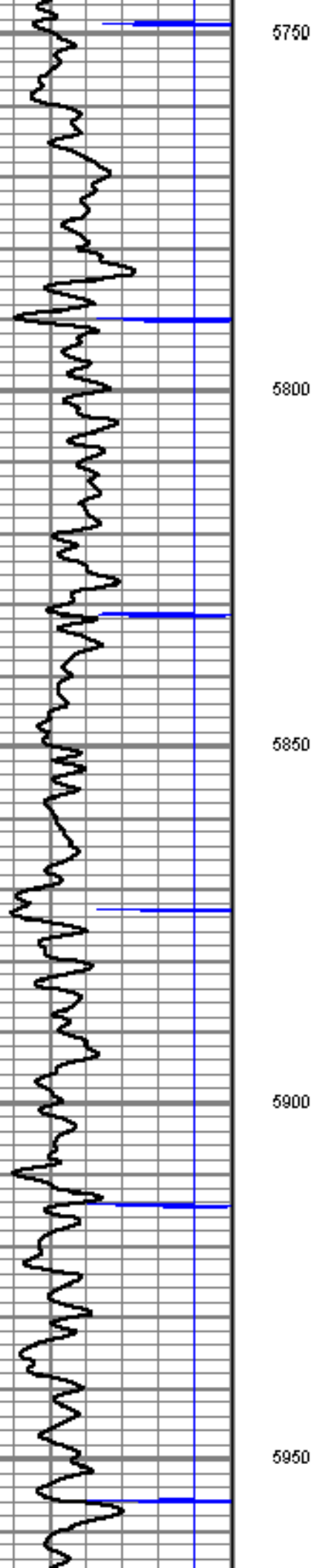
5550

5600

5650

5700





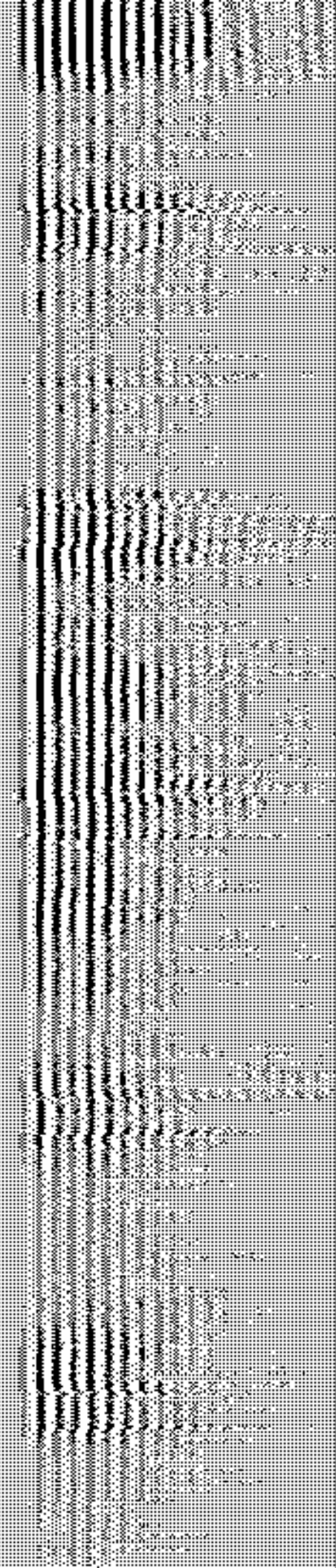
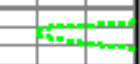
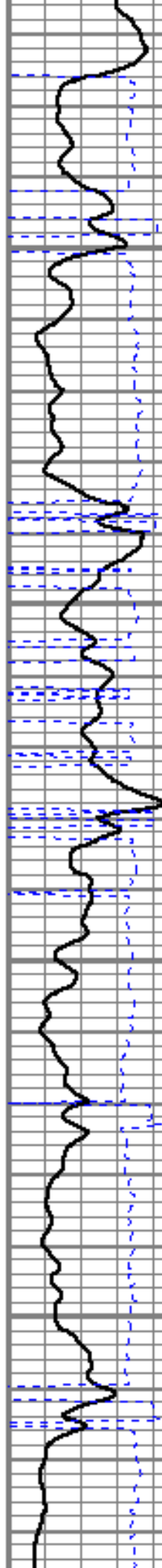


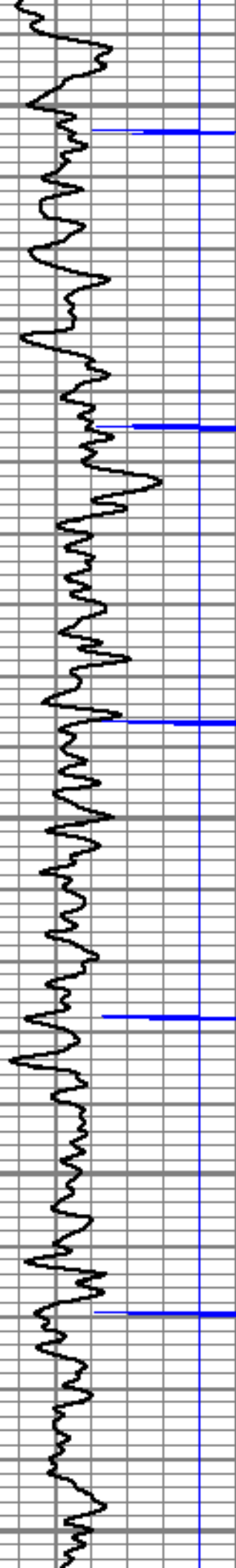
6000

6050

6100

6150





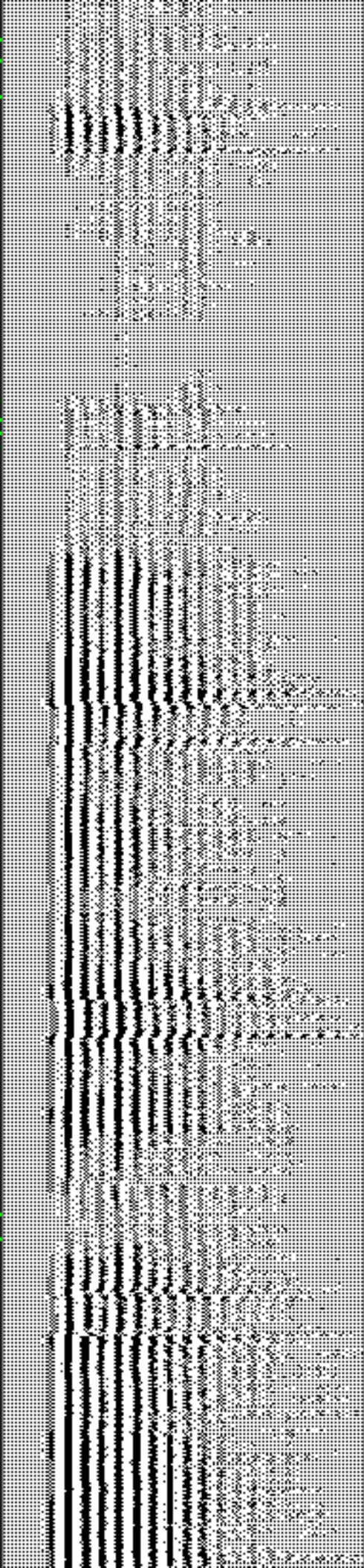
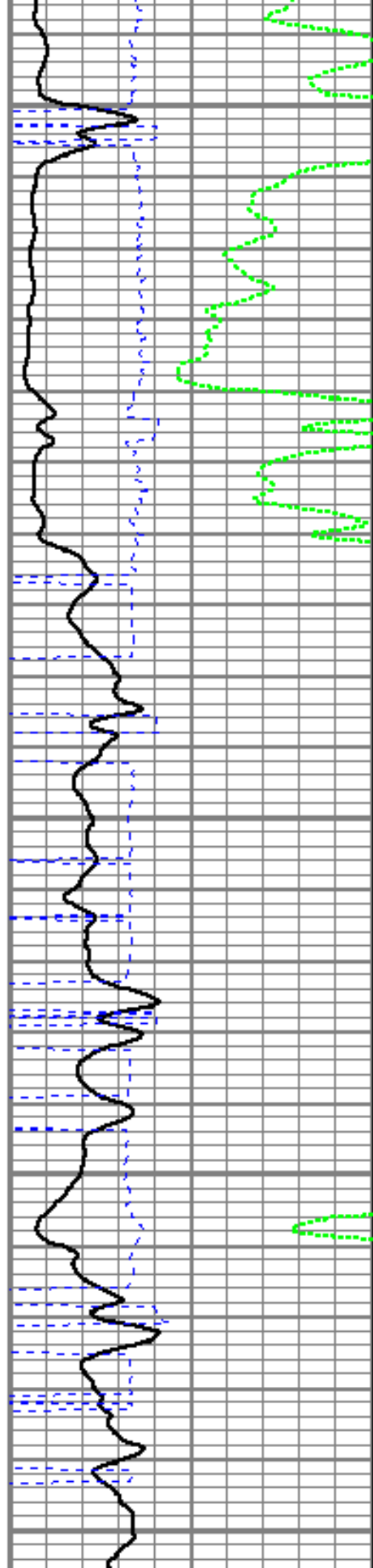
6200

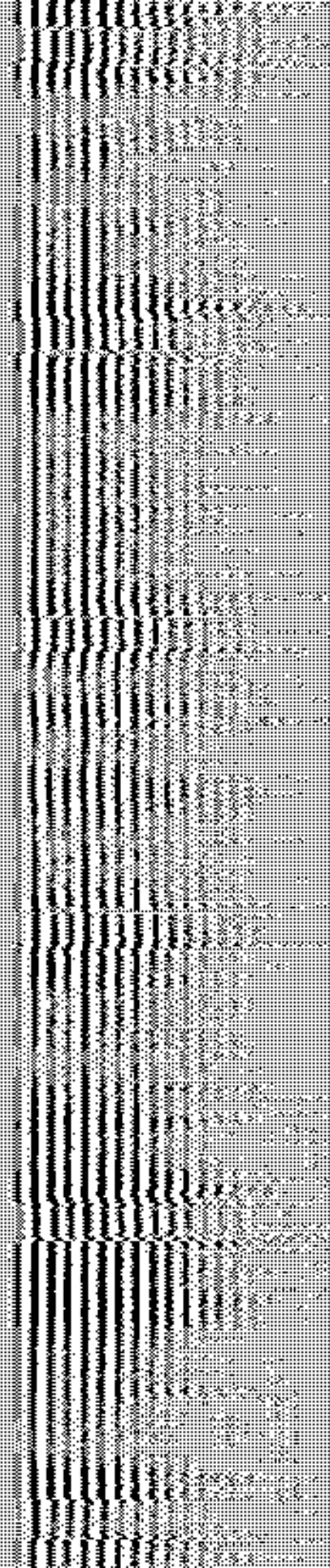
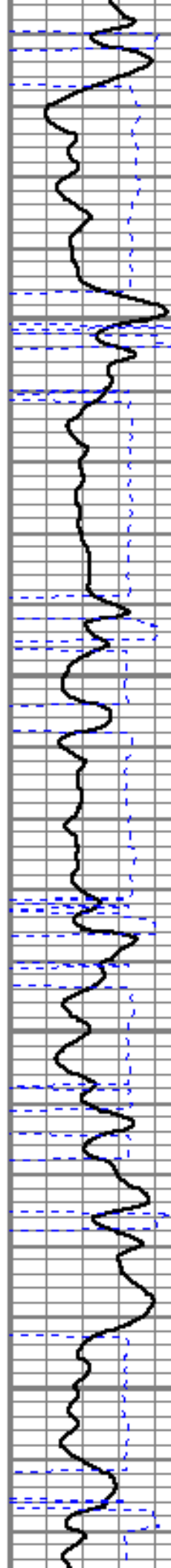
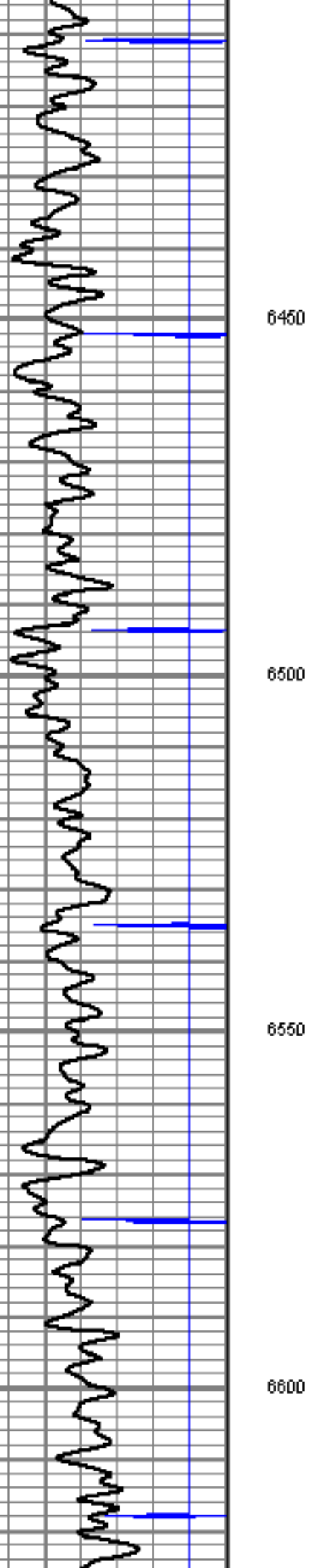
6250

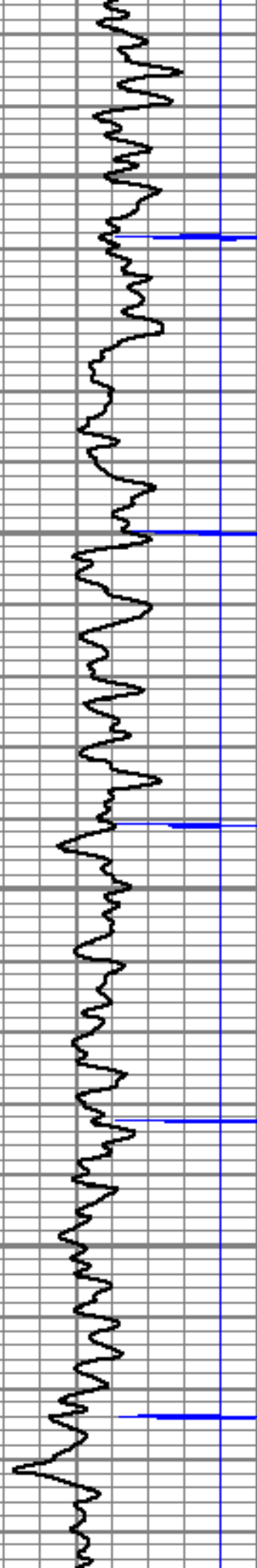
6300

6350

6400





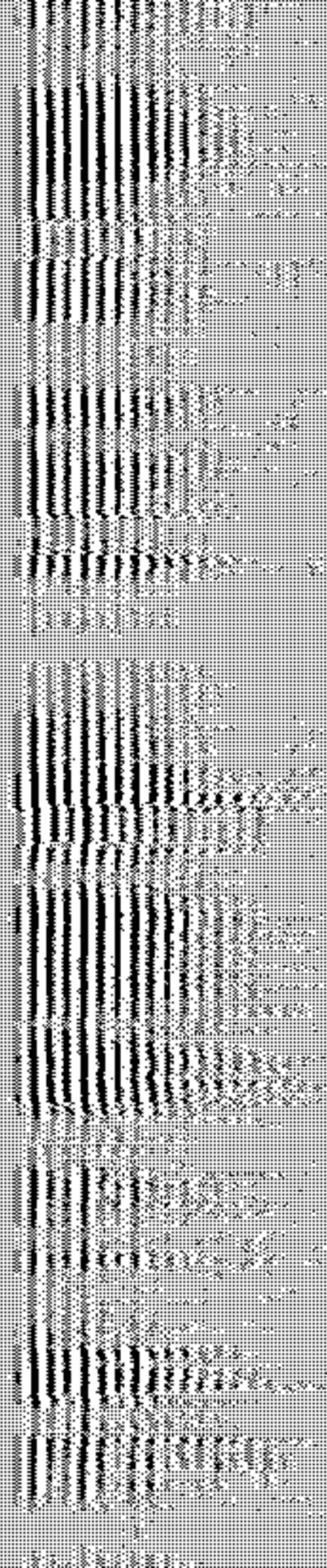
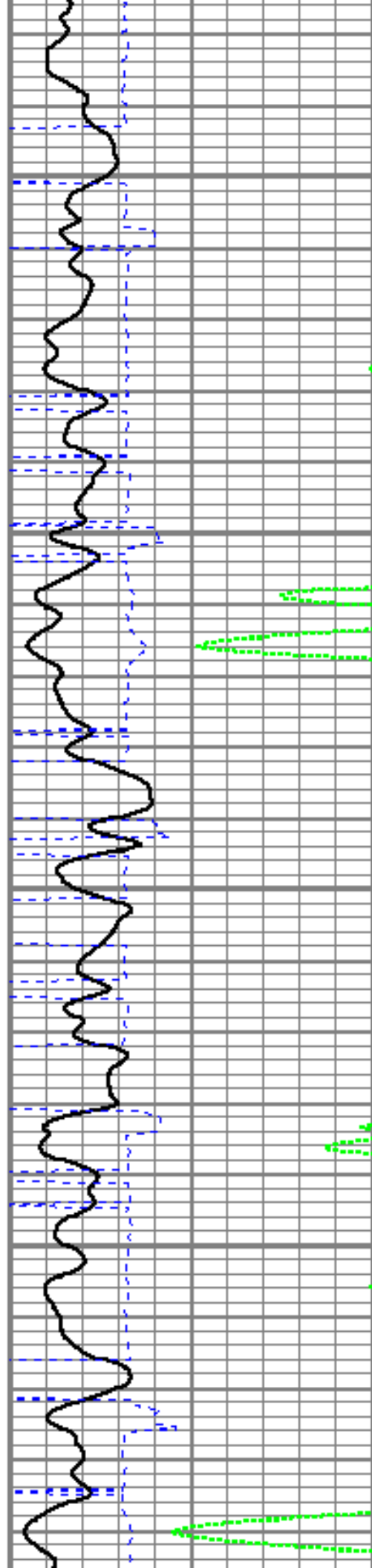


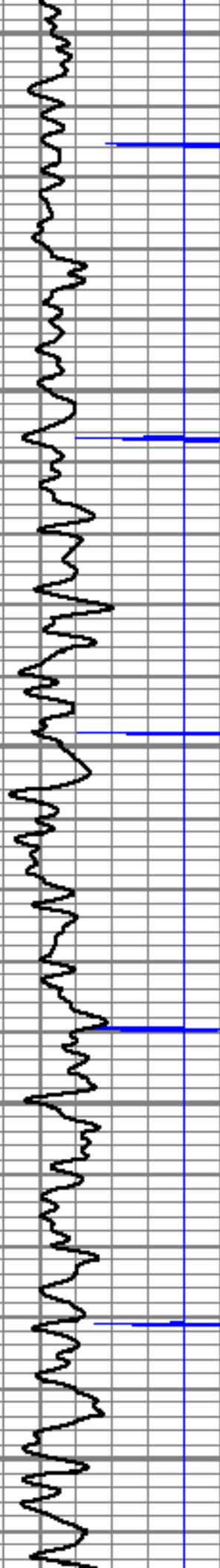
6650

6700

6750

6800





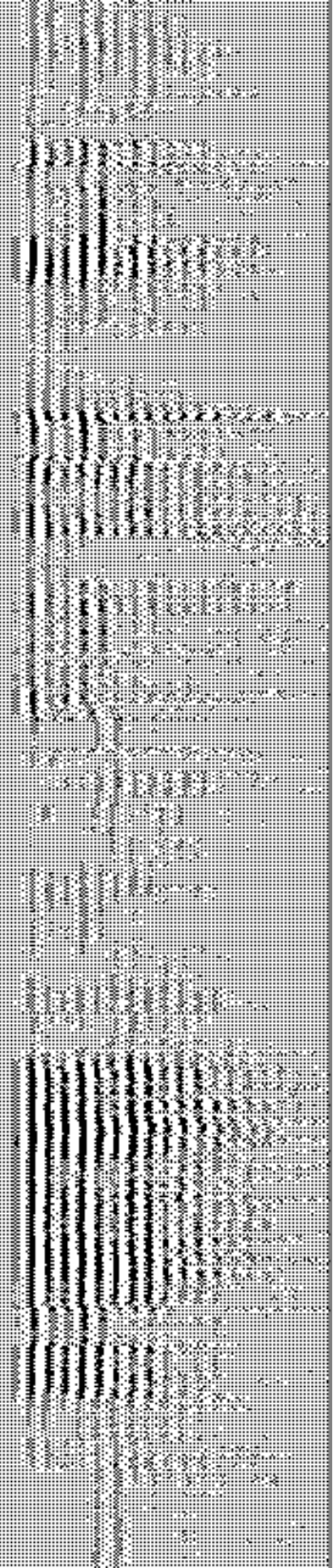
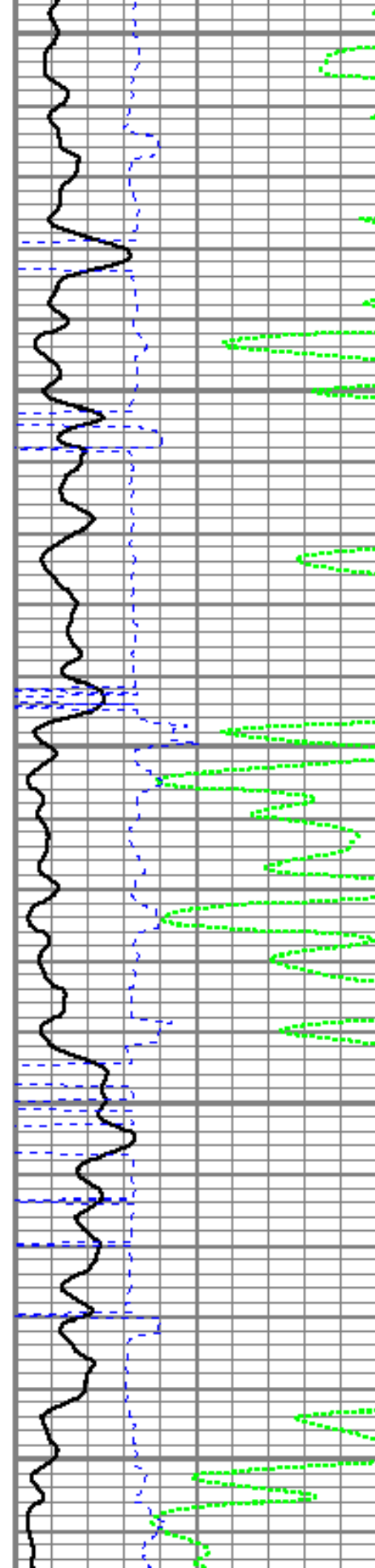
6850

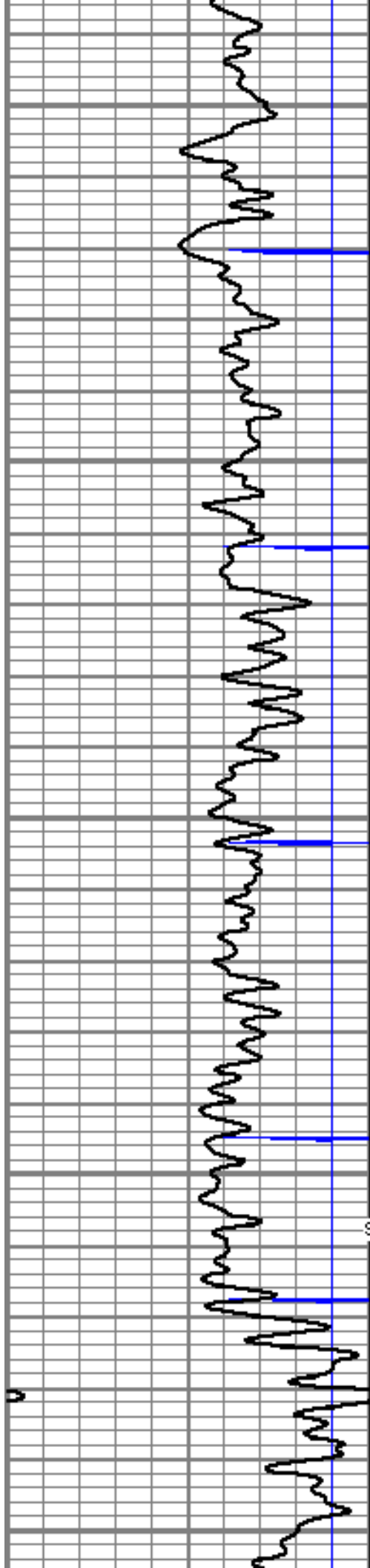
6900

6950

7000

7050





7300

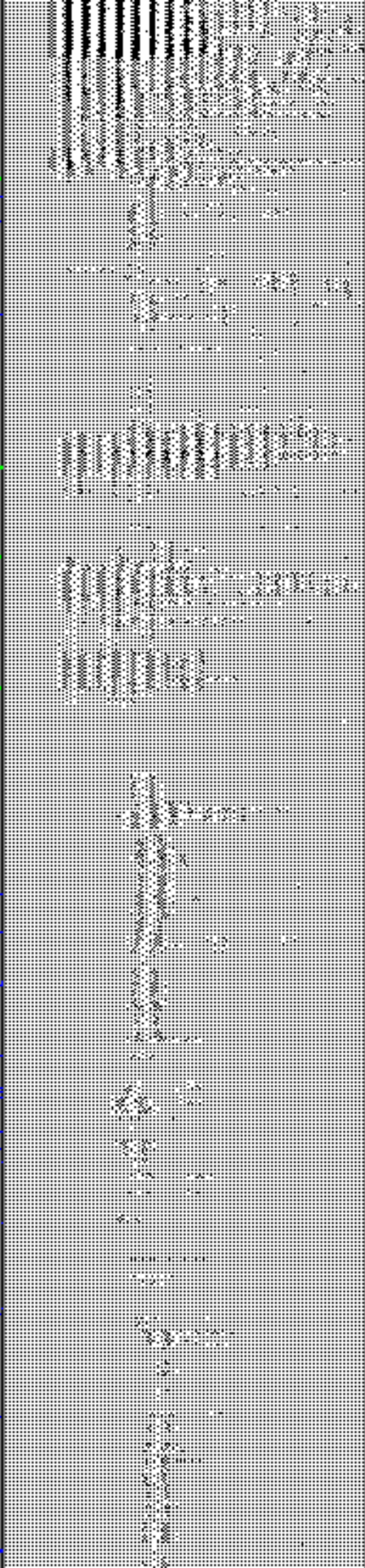
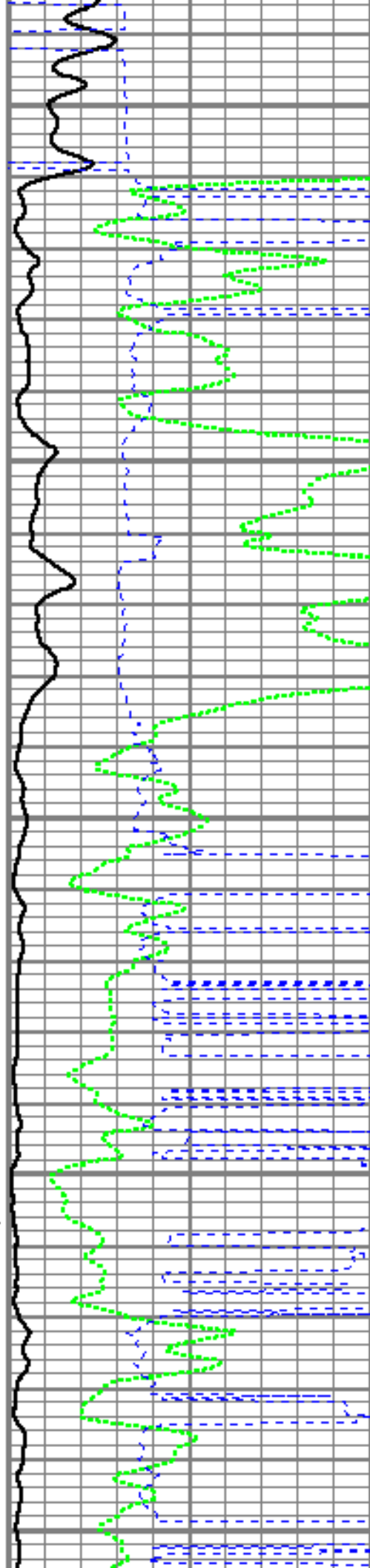
7350

7400

7450

SHORT JOINT

7500



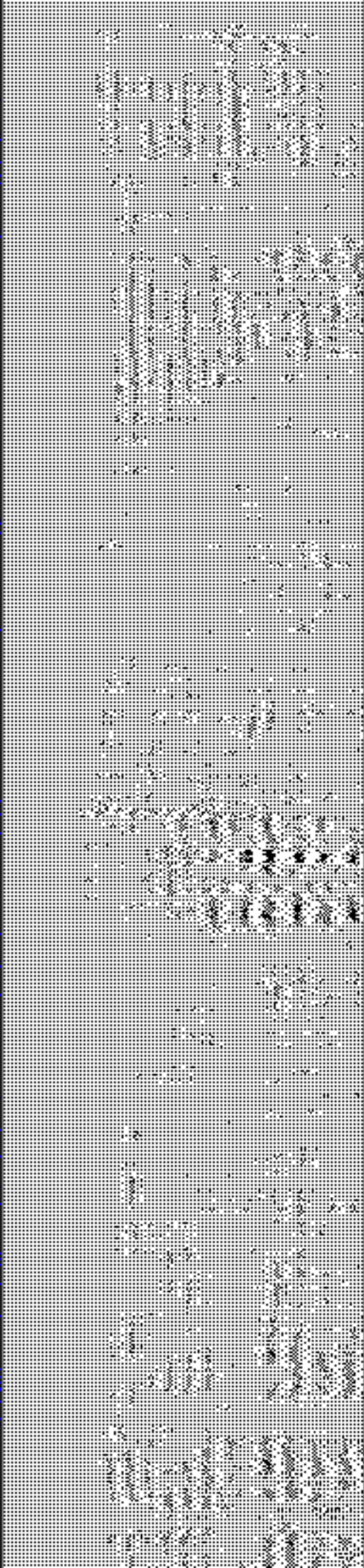
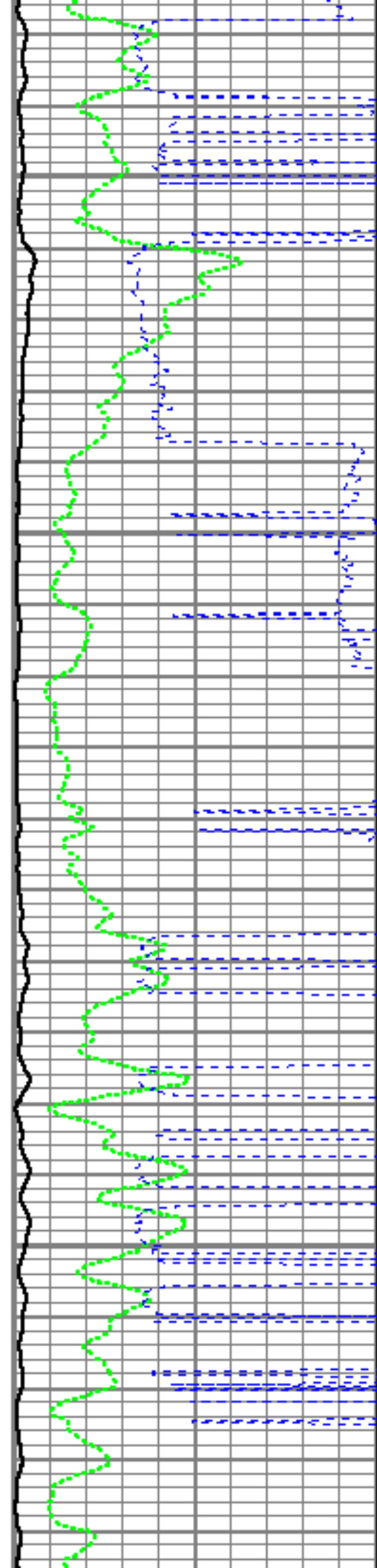


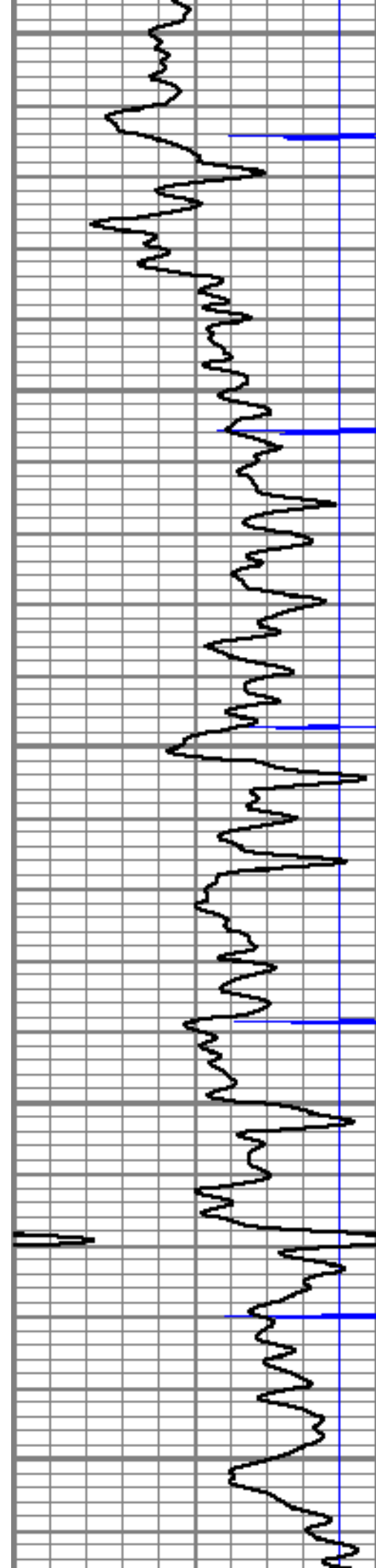
7750

7800

7850

7900





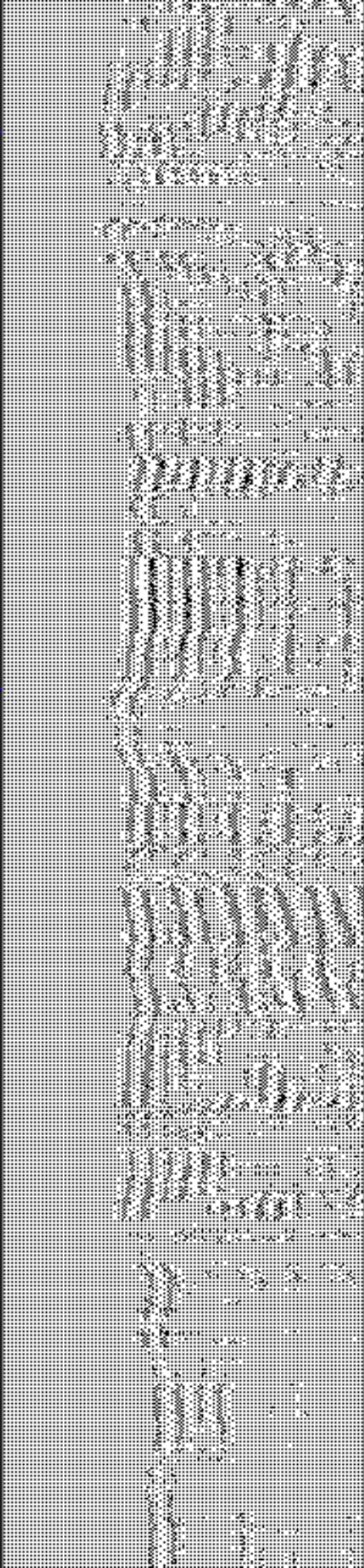
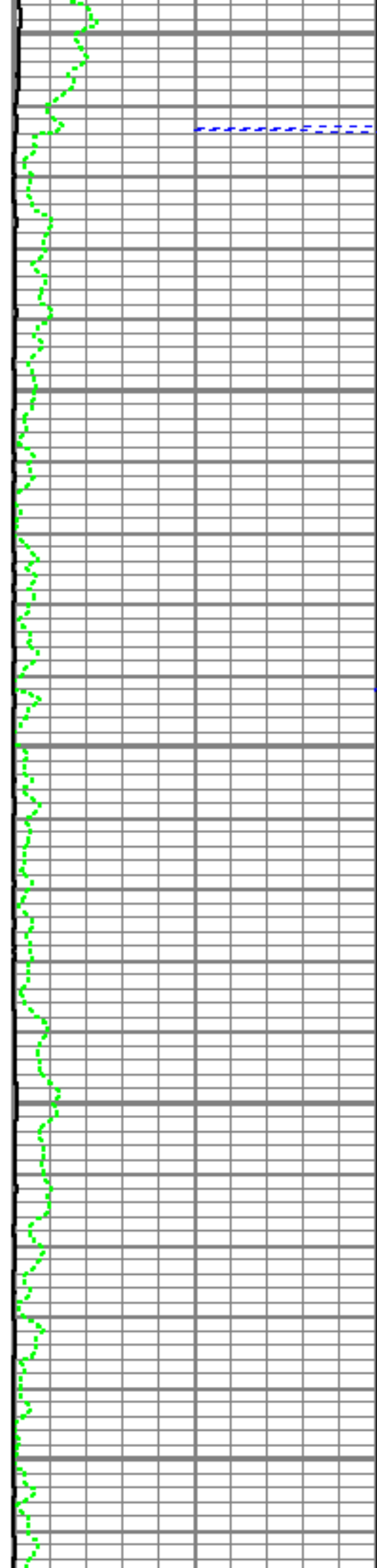
7950

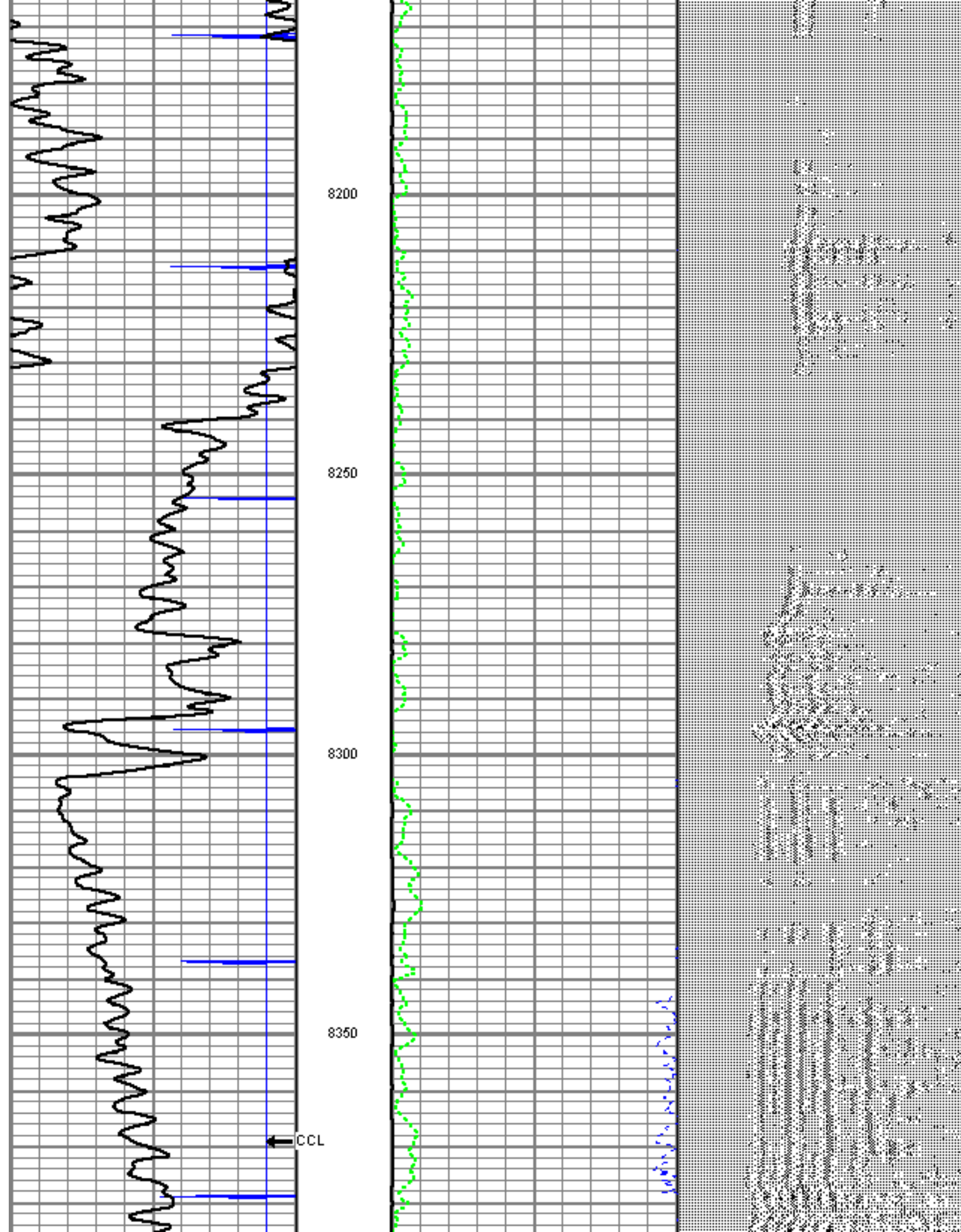
8000

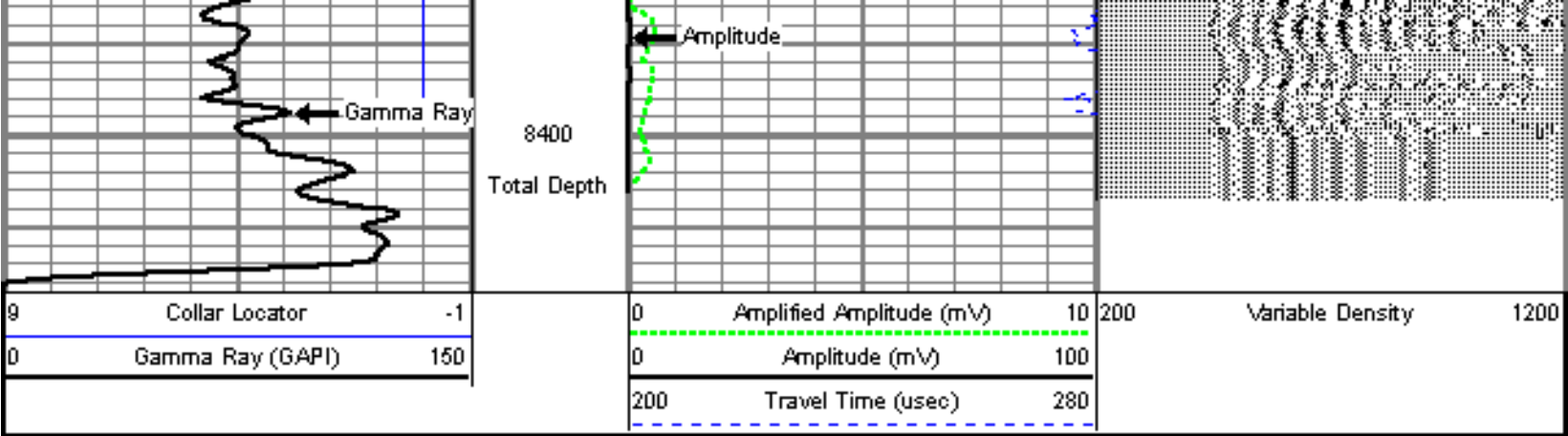
8050



8100

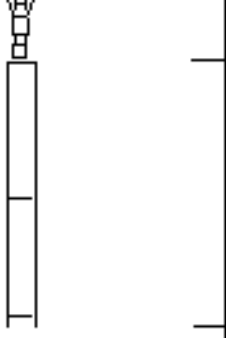
8150








Sensor	Offset (ft)	Schematic	Description	Len (ft)	OD (in)	Wt (lb)
CCL	18.54		titan	1.00	1.69	2.00
			SNDX_CCL-SNDX_3_13_CCL (000001) CSS Gamma Ray/CCL (CCL Section)	1.92	3.13	11.02
			SONDEX	2.71	2.75	32.00
WVFS3FT	10.78		SNDX_RBT-007 (000001) Radial Bond Tool - Analog 3 1/8	9.47	3.13	140.00
WVFS1	10.78					
WVFS2	10.78					
WVFS3	10.78					
WVFS4	10.78					
WVFS5	10.78					
WVFS6	10.78					
WVFS7	10.78					
WVFS8	10.78					
WVFS5FT	9.78					
			SONDEX	2.71	2.75	32.00

GR	2.03		SNDX_GR-SNDX_3_13_GR (000002) Sondex Production Gamma Ray	2.94	3.13	22.05
Dataset: kenyon_4_8_19.db: field/well/run1/pass8 Total Length: 20.75 ft Total Weight: 239.07 lb O.D.: 3.13 in						

	Company	ENCANA OIL & GAS (USA) INC.
	Well	KENYON 4-8-19
	Field	WATTENBERG
	County	WELD
	State	COLORADO