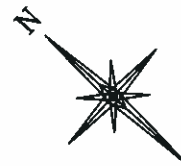
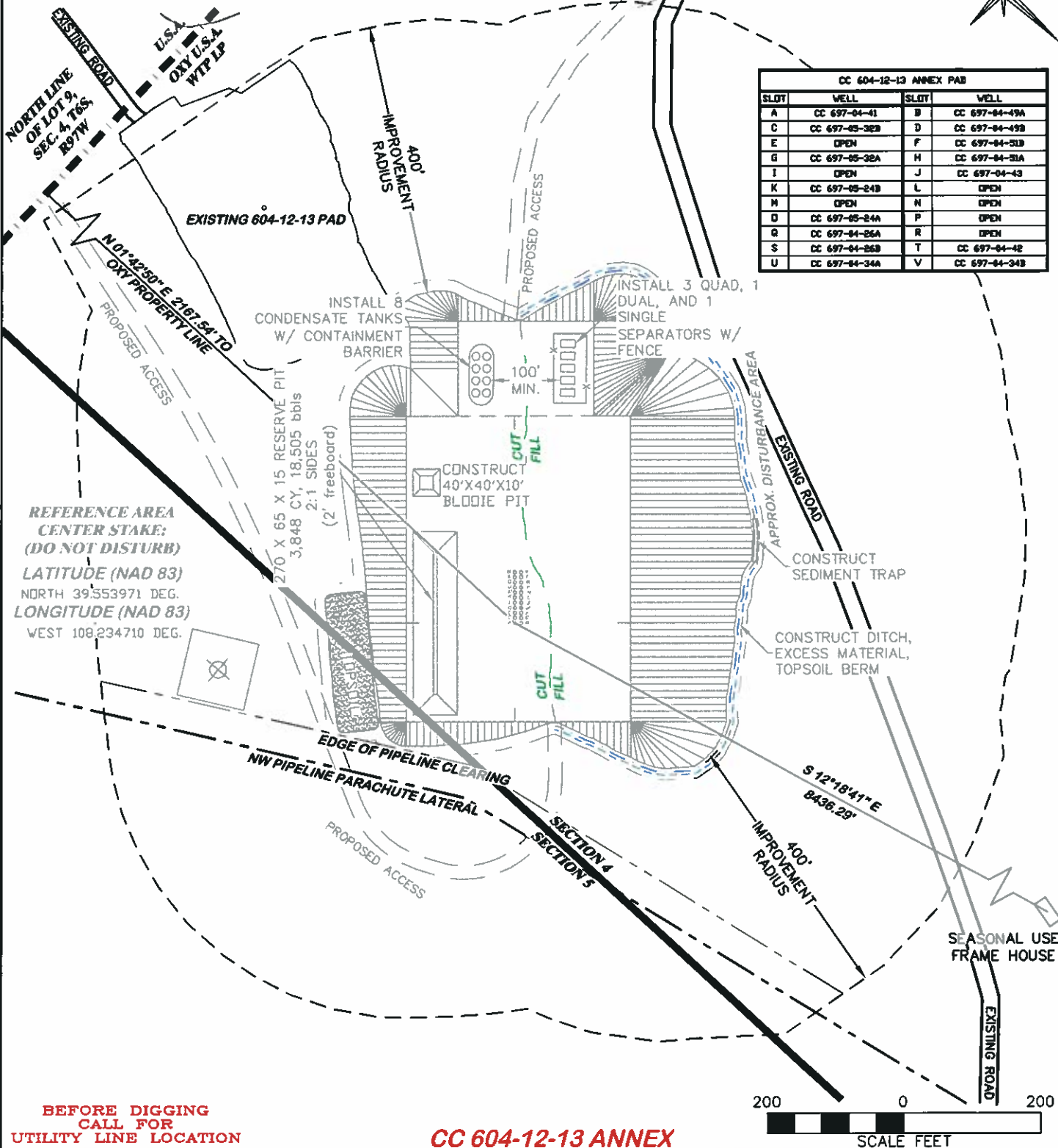


UNGRADED ELEVATION: 8538.4'  
 FINAL ELEVATION: 8528.9'  
 PROPOSED AREA OF DISTURBANCE: 9.3± ACRES  
 DRAINS TO CONN CREEK



CC 604-12-13 ANNEX PAD			
SLOT	WELL	SLOT	WELL
A	CC 697-04-41	B	CC 697-04-49A
C	CC 697-05-32B	D	CC 697-04-49B
E	OPEN	F	CC 697-04-51B
G	CC 697-05-32A	H	CC 697-04-51A
I	OPEN	J	CC 697-04-43
K	CC 697-05-24B	L	OPEN
M	OPEN	N	OPEN
O	CC 697-05-24A	P	OPEN
Q	CC 697-04-26A	R	OPEN
S	CC 697-04-26B	T	CC 697-04-42
U	CC 697-04-34A	V	CC 697-04-34B



BEFORE DIGGING  
 CALL FOR  
 UTILITY LINE LOCATION

CC 604-12-13 ANNEX

LOCATION DRAWING



DRIFIN & ASSOCIATES, INC.

(307) 362-5028

1414 ELK ST., ROCK SPRINGS, WY 82901

DATE: 6/14/11 - TCM

SCALE: 1" = 200'

REVISED: 7/8/11 - DEH

DRG JOB No. 11697

ADDED SOUTHERLY ACCESS

EXHIBIT 2D

**OXY USA WTP LP**  
**CASCADE CREEK 697-04-26A, 26B, 34A, 34B, 41,**  
**42, 43, 49A, 49B, 51A, 51B, 05-24A, 24B, 32A, 32B,**  
**LOT 16, SECTION 4, T. 6 S., R. 97 W., 6th P.M.,**  
**GARFIELD COUNTY, COLORADO**