

CONSTRUCTION LAYOUT DRAWING 1 OF 5

OXY USA WTP LP
CASCADE CREEK 697-04-26A, 26B, 34A, 34B, 41, 42, 43, 49A, 49B, 51A, 51B, 05-24A, 24B, 32A, 32B,
LOT 16, SECTION 4, T. 6 S., R. 97 W., 6th P.M., GARFIELD COUNTY, COLORADO

ESTIMATED EARTHWORK				
ITEM	CUT	FILL	TOPSOIL	EXCESS
PAD	116,328 CY	113,042 CY	3,269 CY	17 CY
PIT	5,167 CY			5,167 CY
TOTALS	121,495 CY	113,042 CY	3,269 CY	5,184 CY

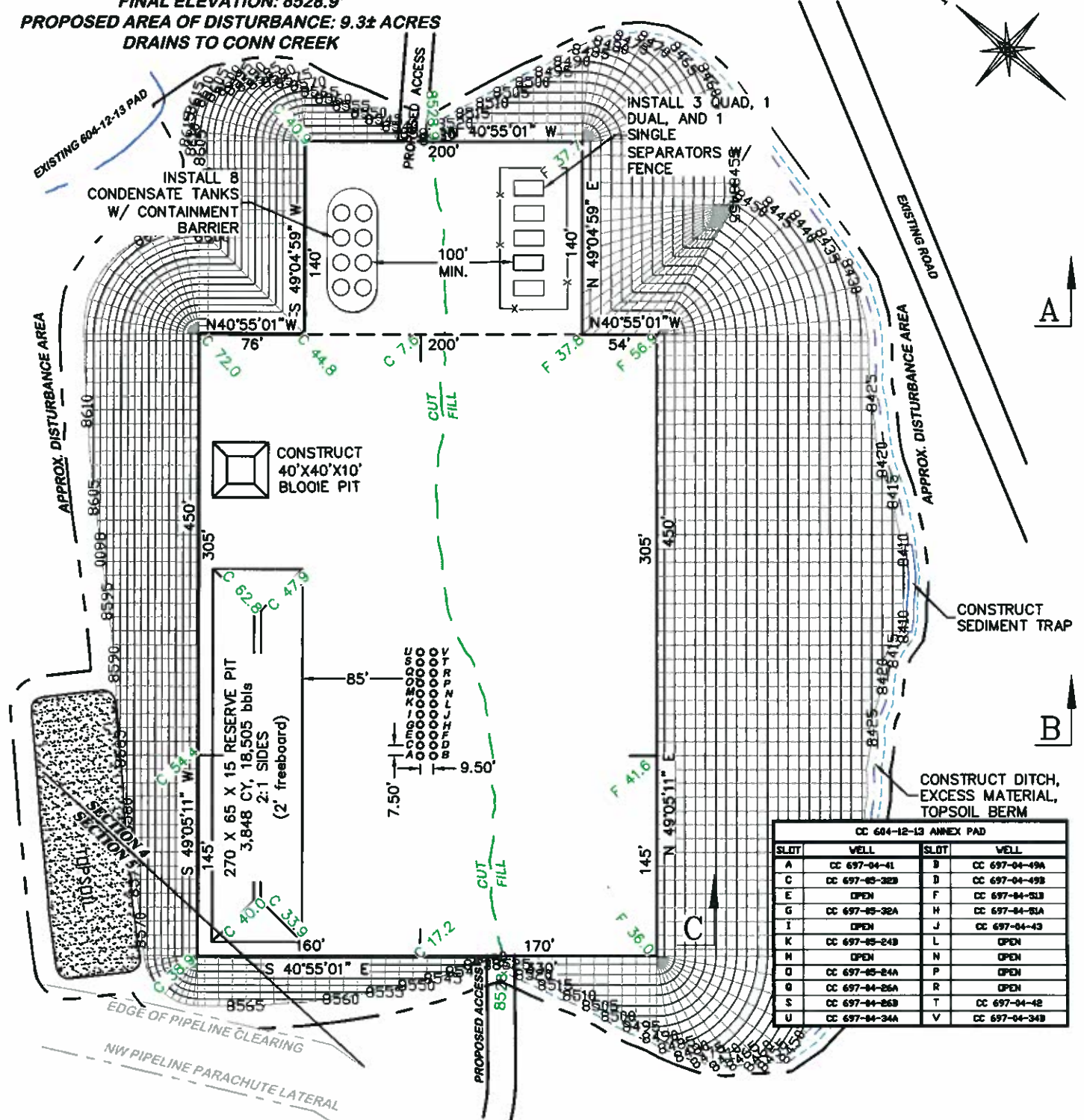


RIFFIN & ASSOCIATES, INC.
 1414 ELK ST., ROCK SPRINGS, WY 82901

(307) 362-5028

DATE: 6/14/11 - TCM	SCALE: 1" = 100'
REVISED: 7/8/11 - DEH	DRG JOB No. 11697
ADDED SOUTHERLY ACCESS	EXHIBIT 2

UNGRADED ELEVATION: 8538.4'
 FINAL ELEVATION: 8528.9'
 PROPOSED AREA OF DISTURBANCE: 9.3± ACRES
 DRAINS TO CONN CREEK

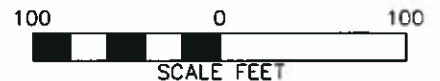


**BEFORE DIGGING
 CALL FOR
 UTILITY LINE LOCATION**

NOTE: THE EARTH QUANTITIES ON
 THIS DRAWING ARE ESTIMATED AND
 THE USE OF SAID QUANTITIES IS AT
 THE RESPONSIBILITY OF THE USER.

DESIGN CONTOURS

CC 604-12-13 ANNEX



CC 604-12-13 ANNEX PAD			
SLOT	WELL	SLOT	WELL
A	CC 697-04-41	B	CC 697-04-49A
C	CC 697-05-32B	D	CC 697-04-49B
E	OPEN	F	CC 697-04-51B
G	CC 697-05-32A	H	CC 697-04-51A
I	OPEN	J	CC 697-04-43
K	CC 697-05-24B	L	OPEN
M	OPEN	N	OPEN
O	CC 697-05-24A	P	OPEN
Q	CC 697-04-25A	R	OPEN
S	CC 697-04-25B	T	CC 697-04-42
U	CC 697-04-34A	V	CC 697-04-34B



RIFFIN & ASSOCIATES, INC.

(307) 362-5028

1414 ELK ST., ROCK SPRINGS, WY 82901

DATE: 6/14/11 - TCM

SCALE: 1" = 100'

REVISED: 7/8/11 - DEH

DRG JOB No. 11697

ADDED SOUTHERLY ACCESS

EXHIBIT 2B

CONSTRUCTION LAYOUT DRAWING 3 OF 5

DESIGN CONTOURS

OXY USA WTP LP

**CASCADE CREEK 697-04-26A, 26B, 34A, 34B, 41,
 42, 43, 49A, 49B, 51A, 51B, 05-24A, 24B, 32A, 32B,
 LOT 16, SECTION 4, T. 6 S., R. 97 W., 6th P.M.,
 GARFIELD COUNTY, COLORADO**