



CEMENT BOND LOG

Mesa Wireline

Company ENCANA OIL & GAS (USA) INC.	
Well	KENYON 34-19
Field	WATTENBURG
County	WELD
State	COLORADO
Company ENCANA OIL & GAS (USA) INC.	
Well	KENYON 34-19
Field	WATTENBURG
County	WELD
State	COLORADO
Location:	API # : 05123327560000
Permanent Datum	GROUND LEVEL
Log Measured From	KELLY BUSHING = 12 FT
Drilling Measured From	KELLY BUSHING
SHL: SESE 19-2N-68W6M	
BHL: SESE 19-2N-68W6M	
SEC. 19 TWP. 02N RGE. 64W	
Elevation	NONE
K.B. 5005'	
D.F. 5004'	
G.L. 4993'	

Date	14 MAR 2011						
Run Number	ONE						
Depth Driller	8275'						
Depth Logger	8224'						
Bottom Logged Interval	8222'						
Top Log Interval	3500'						
Open Hole Size	7.875"						
Type Fluid	WATER						
Density / Viscosity	~8.34#						
Max. Recorded Temp.	N/A						
Estimated Cement Top	3690' & 6850'						
Time Well Ready	N/A						
Time Logger on Bottom	N/A						
Equipment Number	WLD061 / RBT04						
Location	AULT, CO						
Recorded By	D. SOLIS						
Witnessed By	G. CUMMINGS						
Borehole Record							
Run Number	Bit	From	To	Size	Weight	From	To
ONE	12.25"	SURFACE	800'	N/A			
TWO	7.875"	800'	8265'				
Casing Record							
Size	Weight						
Surface String	8.625"	24.0#					
Prot. String							
Production String	4.5"	11.6#					
Liner							
Tubing Record							
Top	Bottom						
SURFACE	800'						
SURFACE	8264'						

<<< Fold Here >>>

All interpretations are opinions based on inferences from electrical or other measurements and we cannot and do not guarantee the accuracy or correctness of any interpretation, and we shall not, except in the case of gross or willful negligence on our part, be liable or responsible for any loss, costs, damages, or expenses incurred or sustained by anyone resulting from any interpretation made by any of our officers, agents or employees. These interpretations are also subject to our general terms and conditions set out in our current Price Schedule.

Comments

RBT-GR RAN IN COMBINATION.
NO LOGS AVAILABLE TO CORRELATE WITH.
SHORT JOINT@: 7310' TO 7332'.
DV TOOL @: 5361'
LOG INTERVALS PER CUSTOMER REQUEST.
TVD OF WELL IS 8091'. MD IS 8224'.

WE APPRECIATE YOUR BUSINESS, MESA WIRELINE LLC, AULT, CO. (970) 834-2495



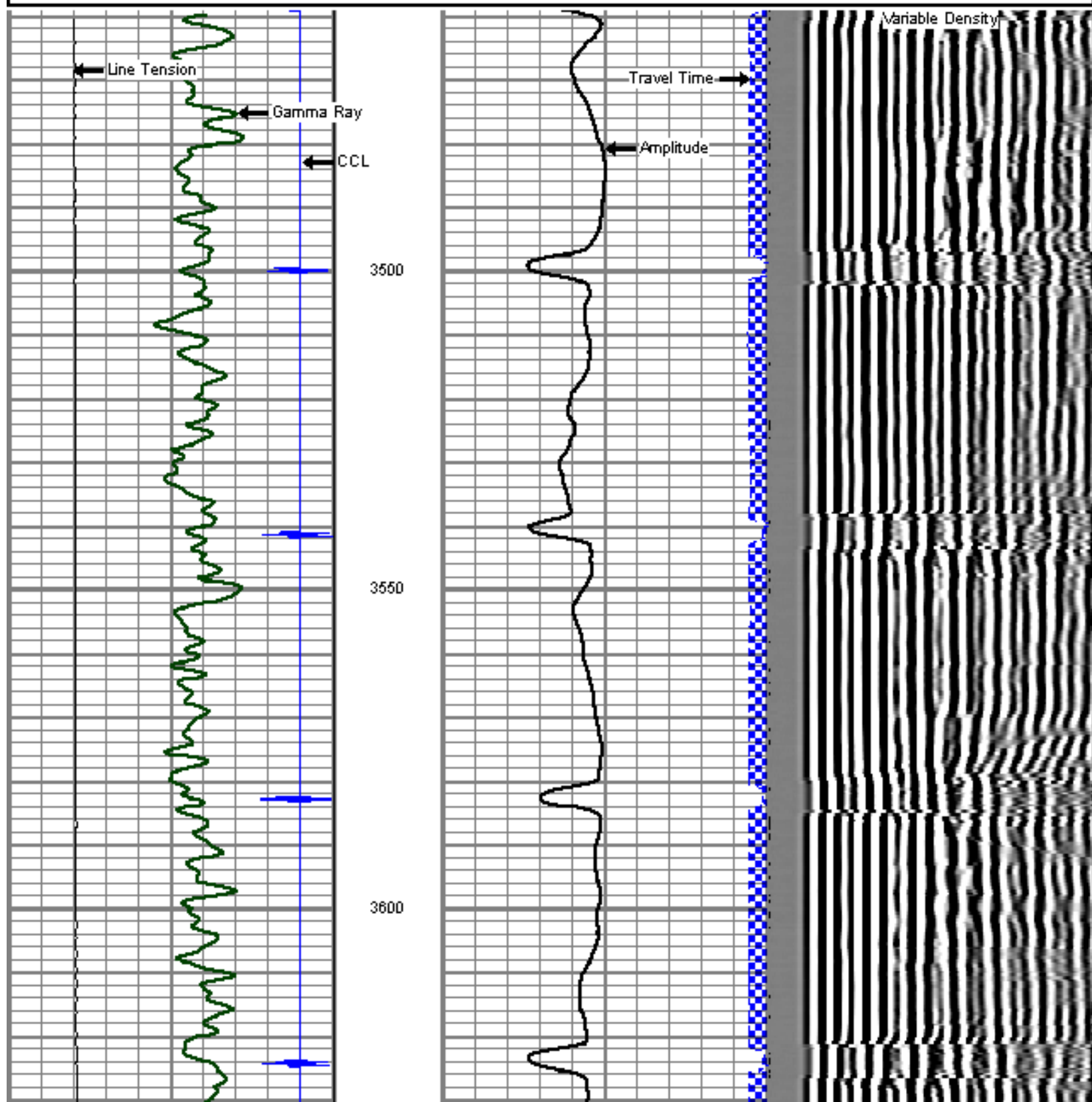
MAIN LOG SECTION

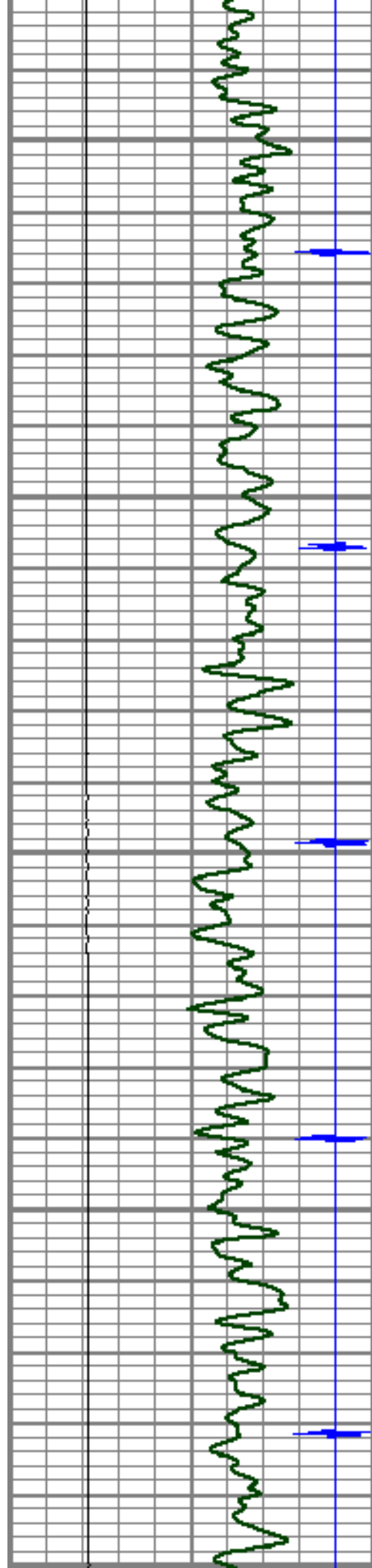
UPPER PASS

Database File: kenyon 34-19.db
Dataset Pathname: pass9
Presentation Format: cbl01son
Dataset Creation: Mon Mar 14 10:48:45 2011 by Log SCH 110223
Charted by: Depth in Feet scaled 1:240

9	Collar Locator	-1
0	Gamma Ray (GAPI)	150
0	LTEN (lb)	4000

0	Amplified Amplitude (mV)	10	200	Variable Density	1200
0	Amplitude (mV)	100			
0	Travel Time (usec)	200			





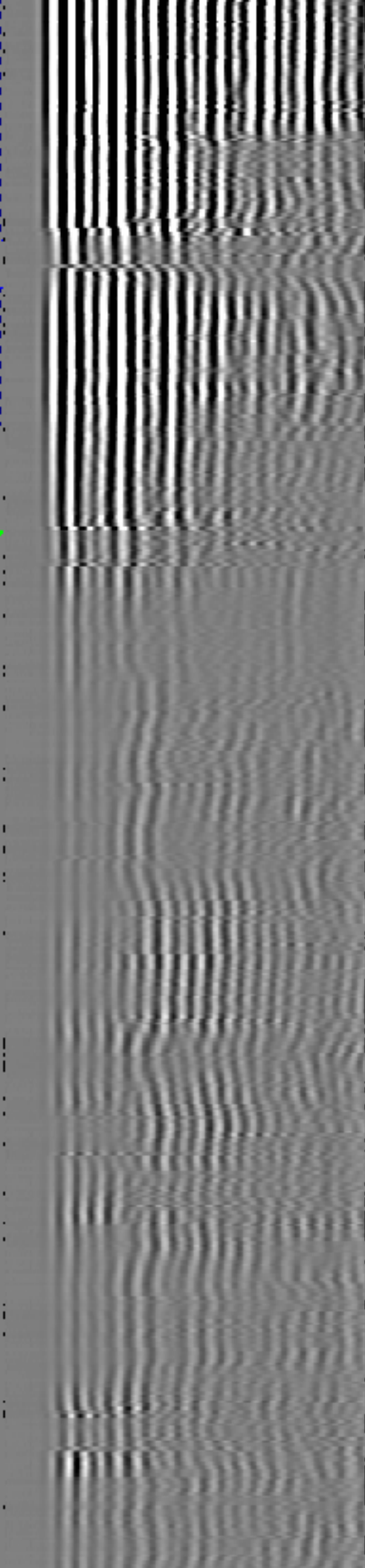
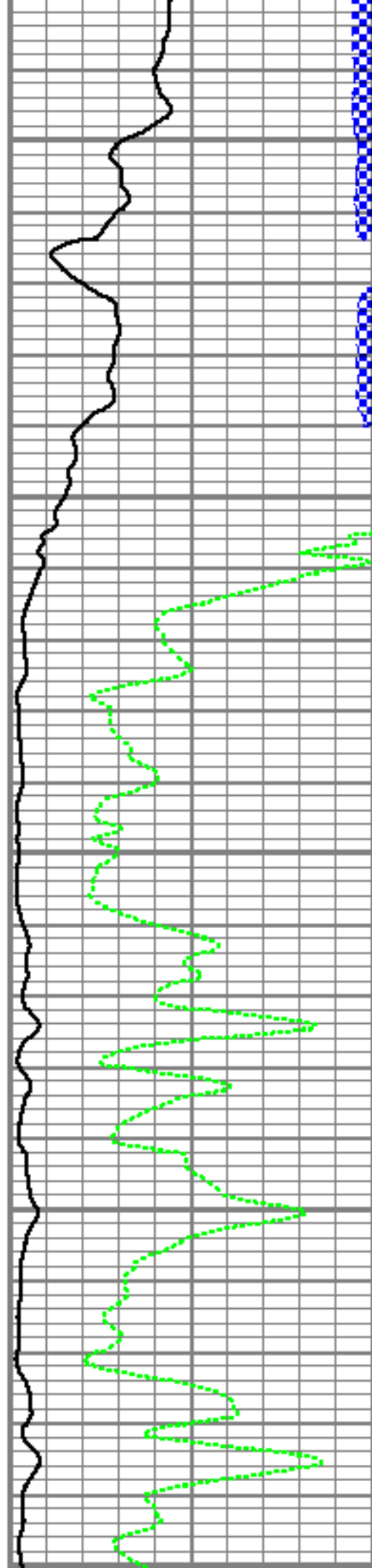
3650

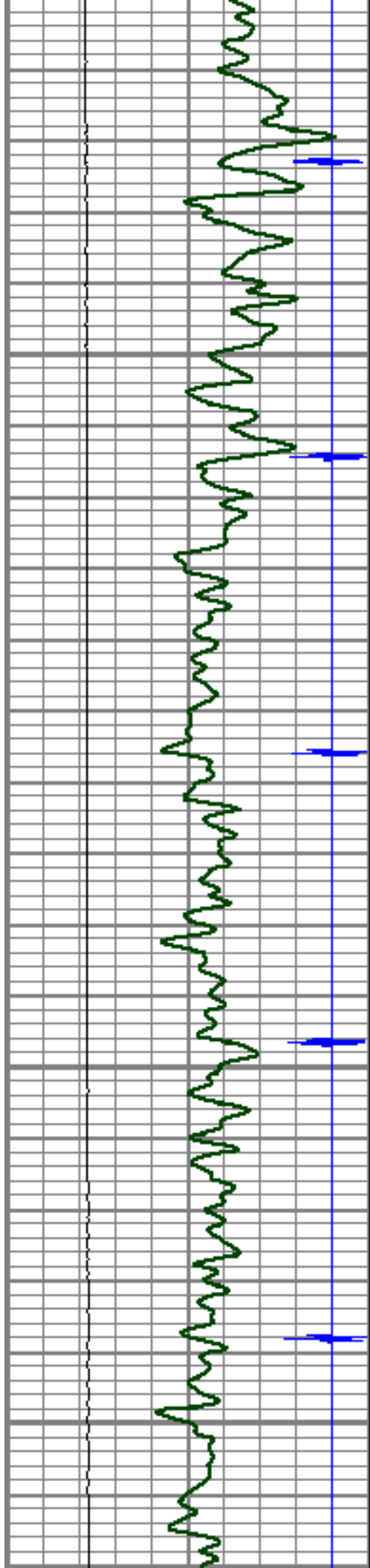
3700

3750

3800

3850



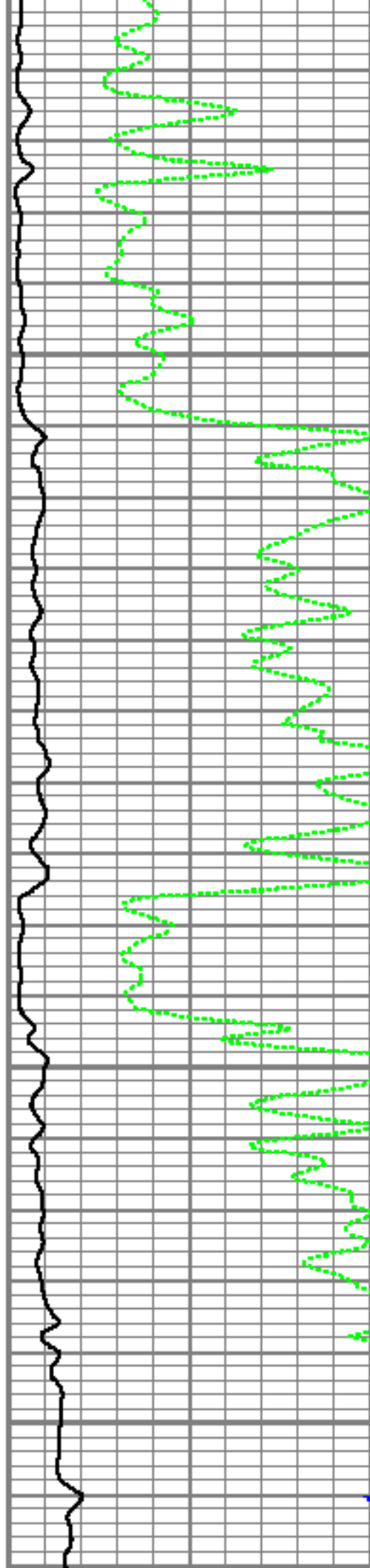


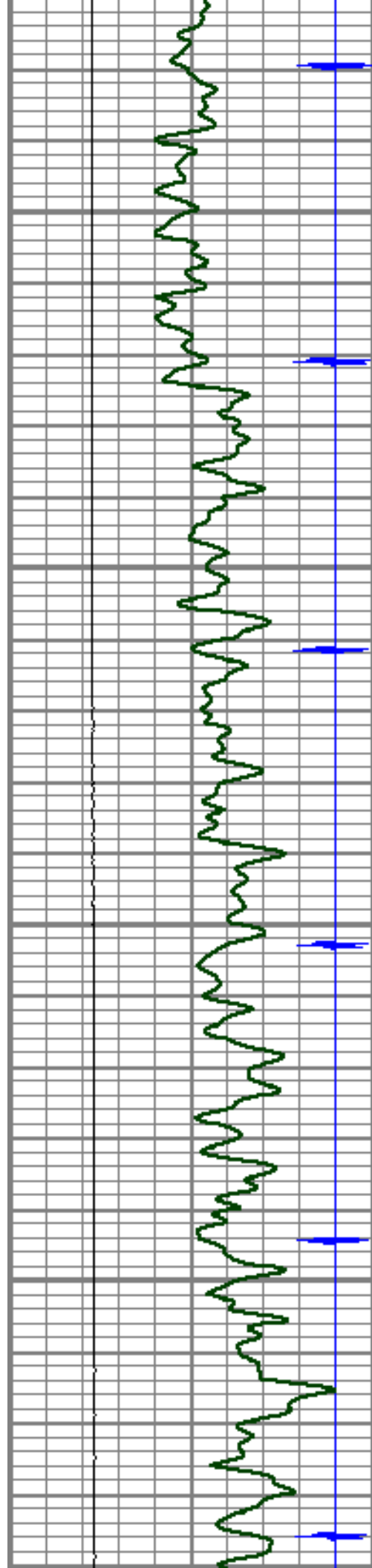
3900

3950

4000

4050



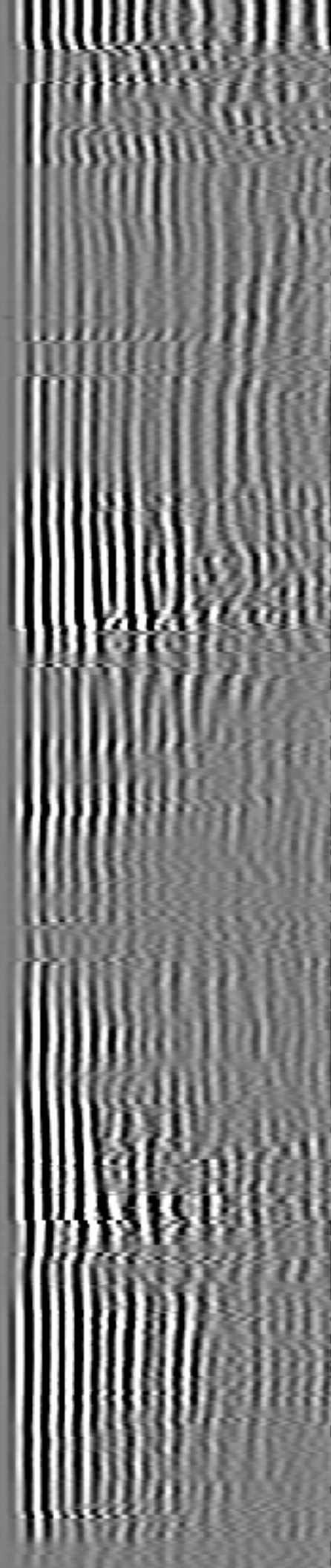
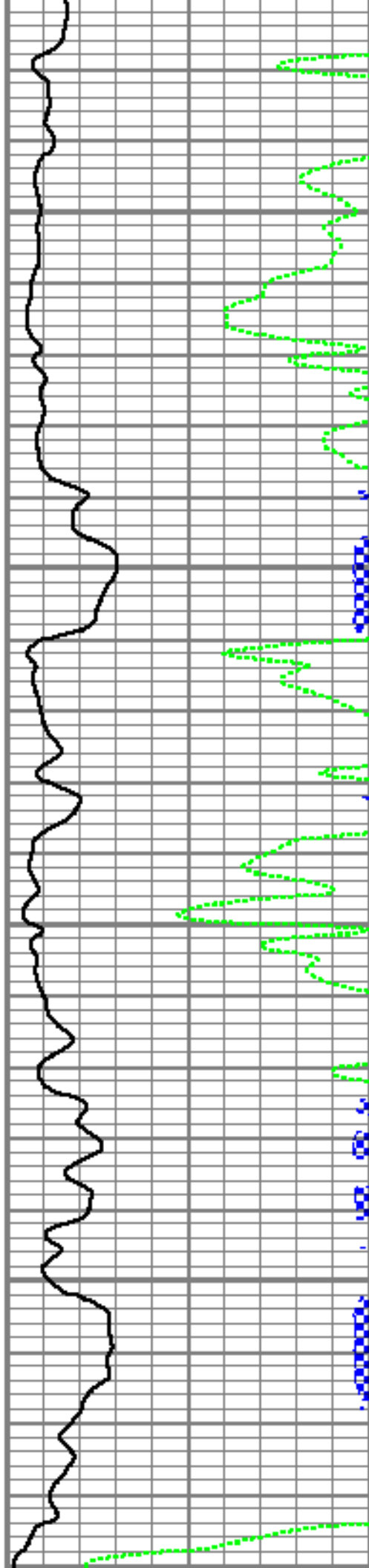


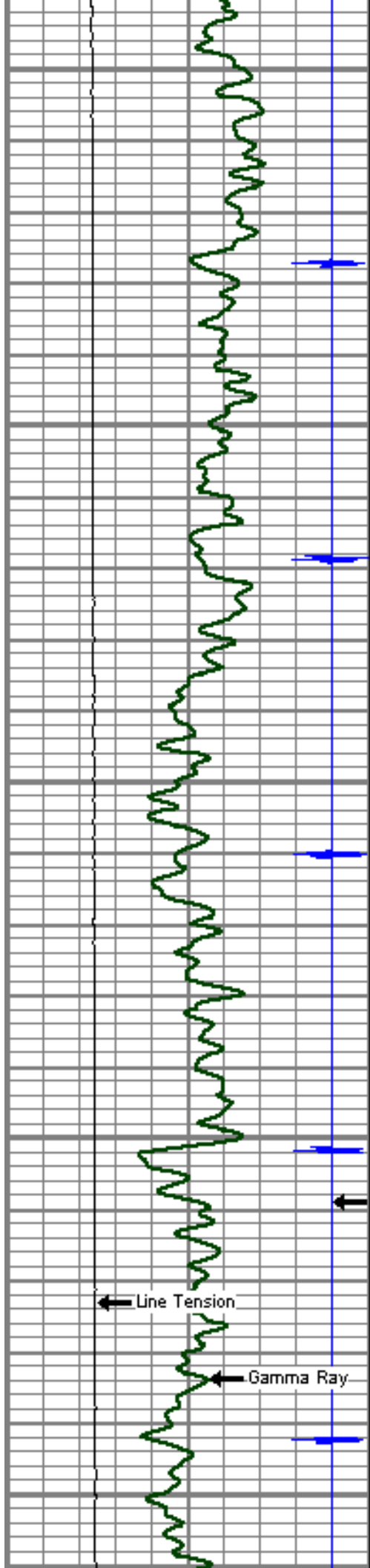
4100

4150

4200

4250





4300

4350

4400

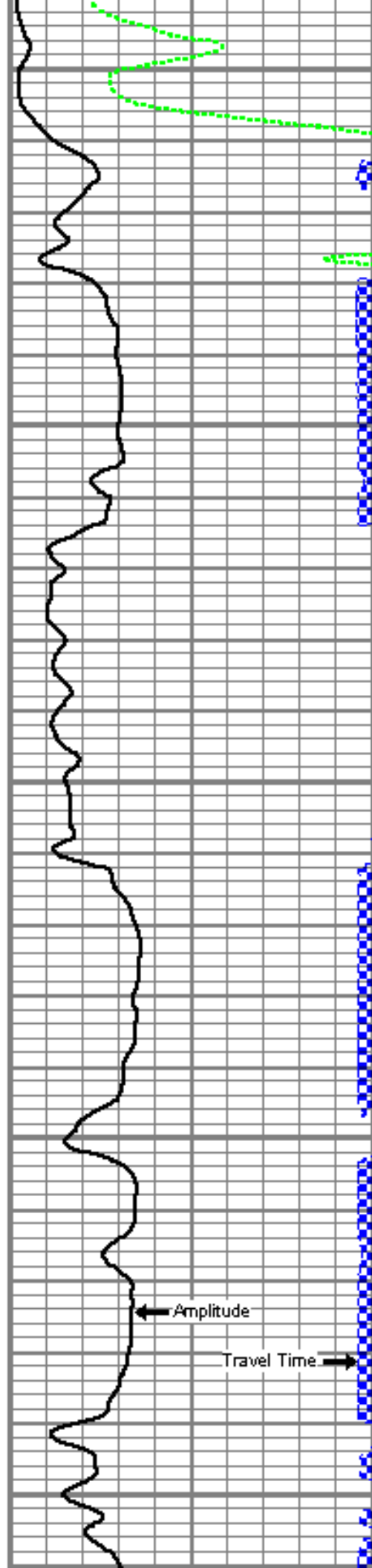
4450

4500

Line Tension

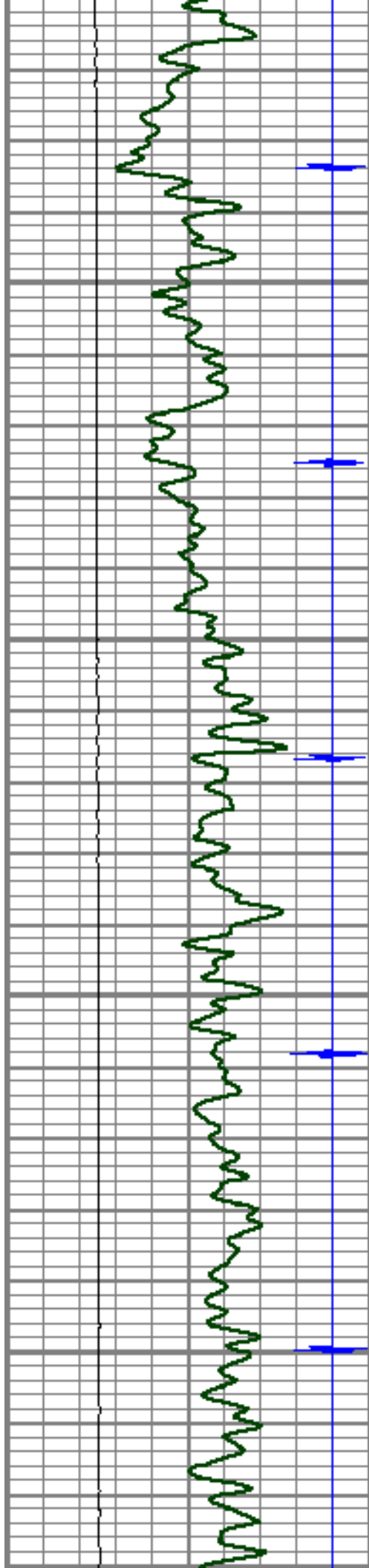
Gamma Ray

CCL



Amplitude

Travel Time

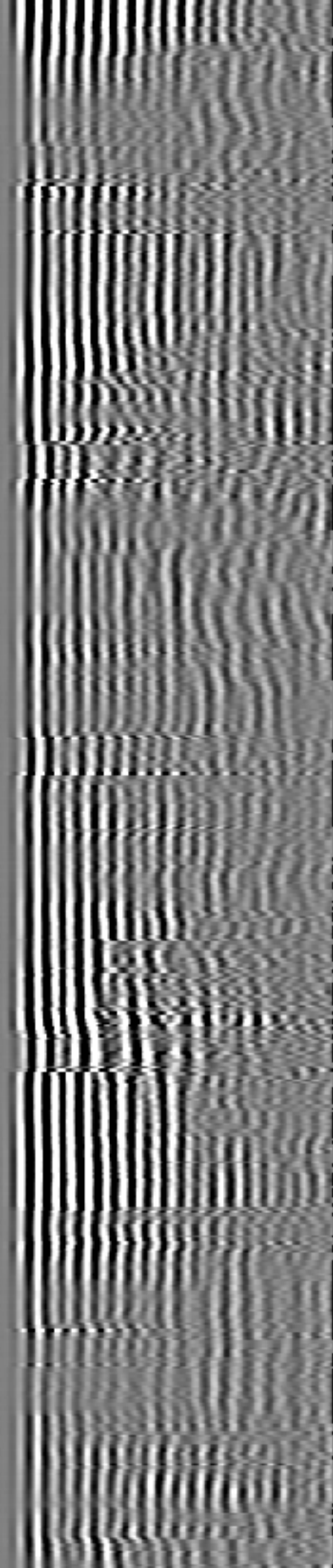
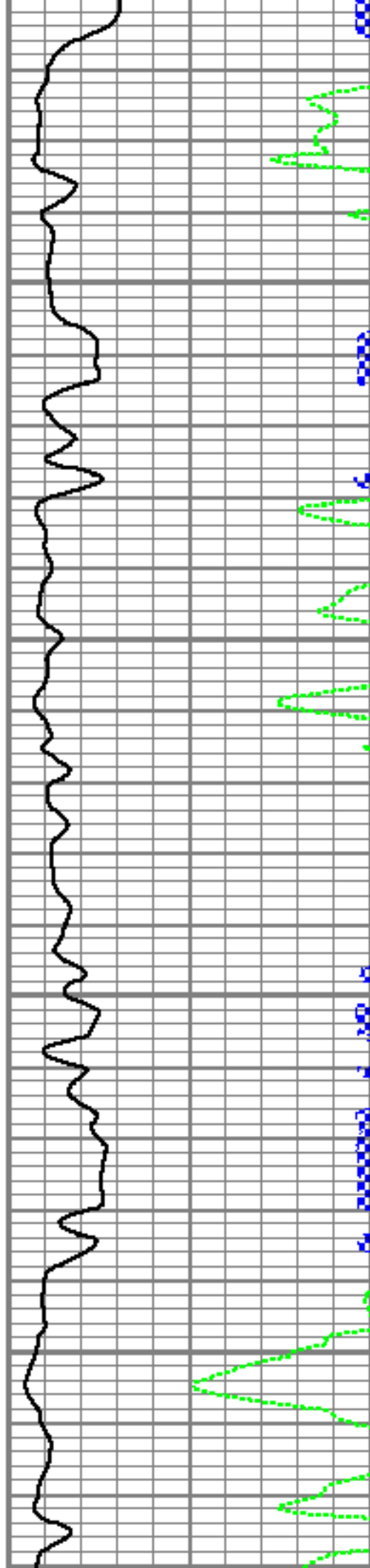


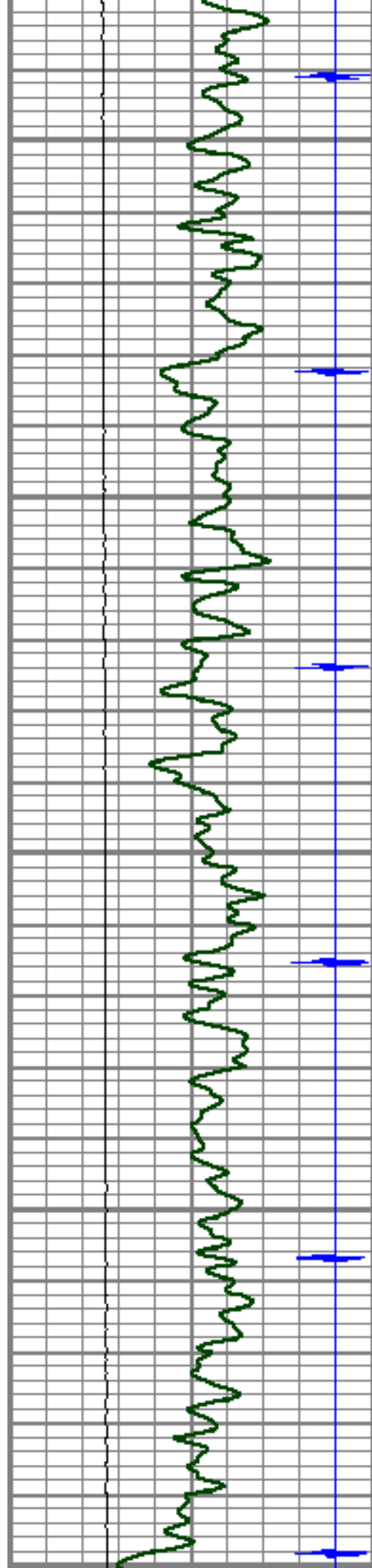
4550

4600

4650

4700





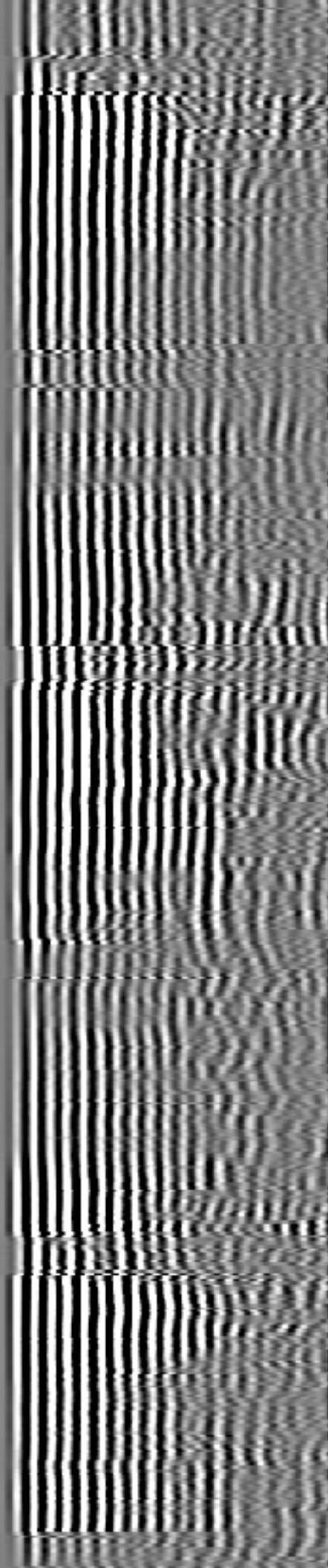
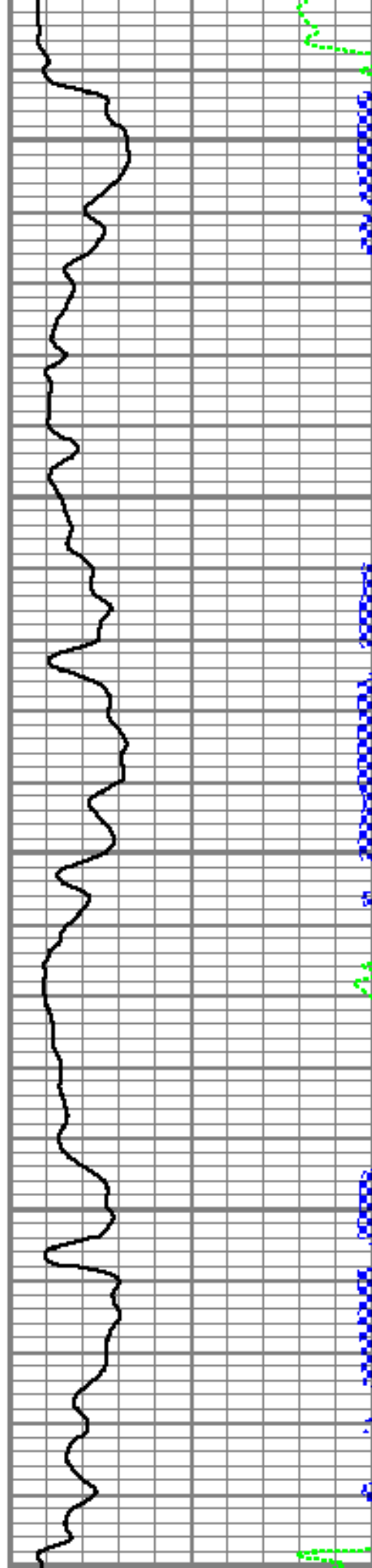
4750

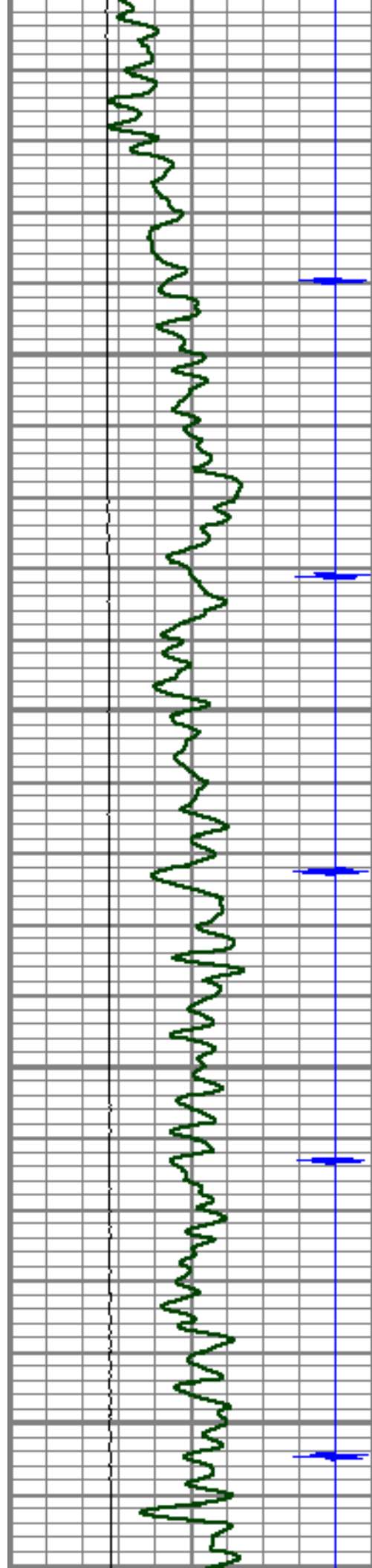
4800

4850

4900

4950



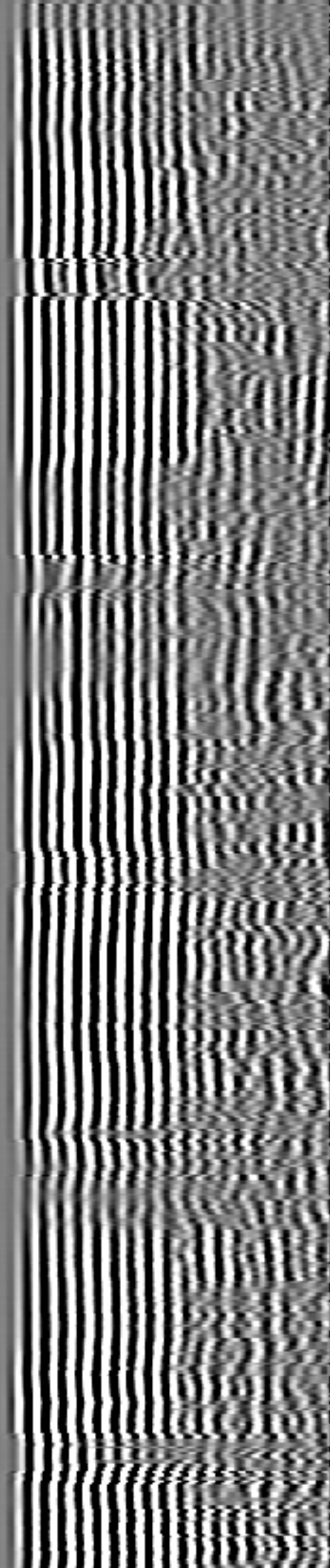
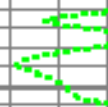
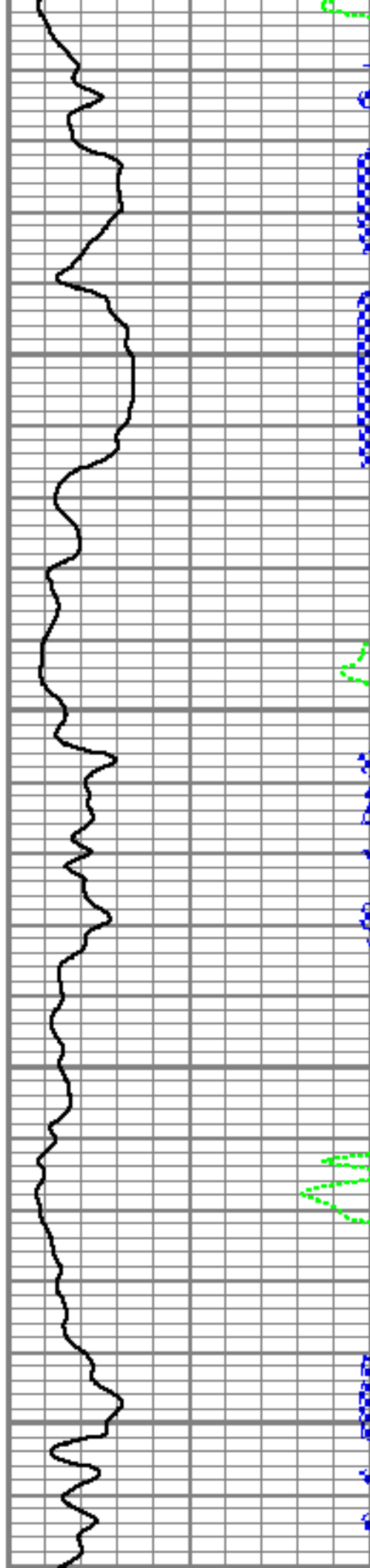


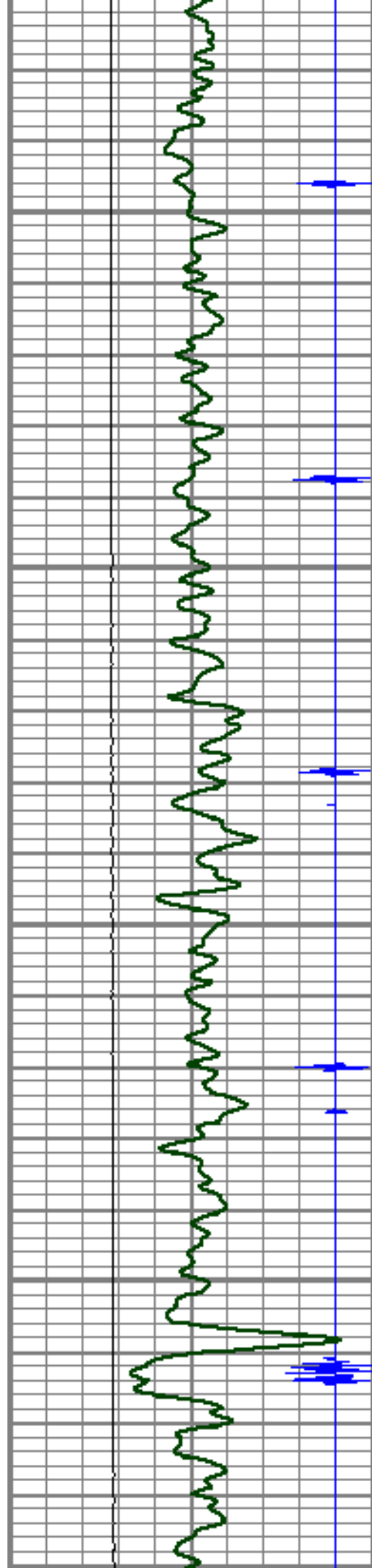
5000

5050

5100

5150





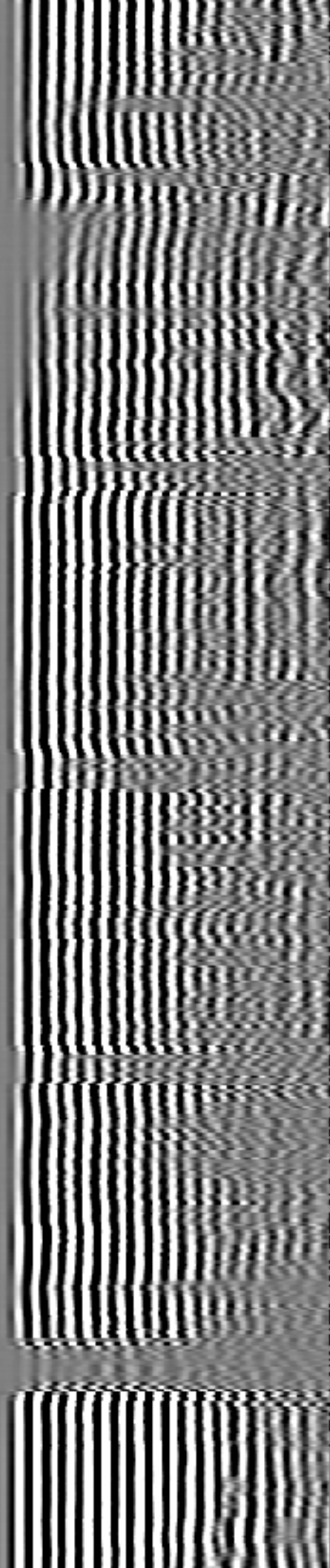
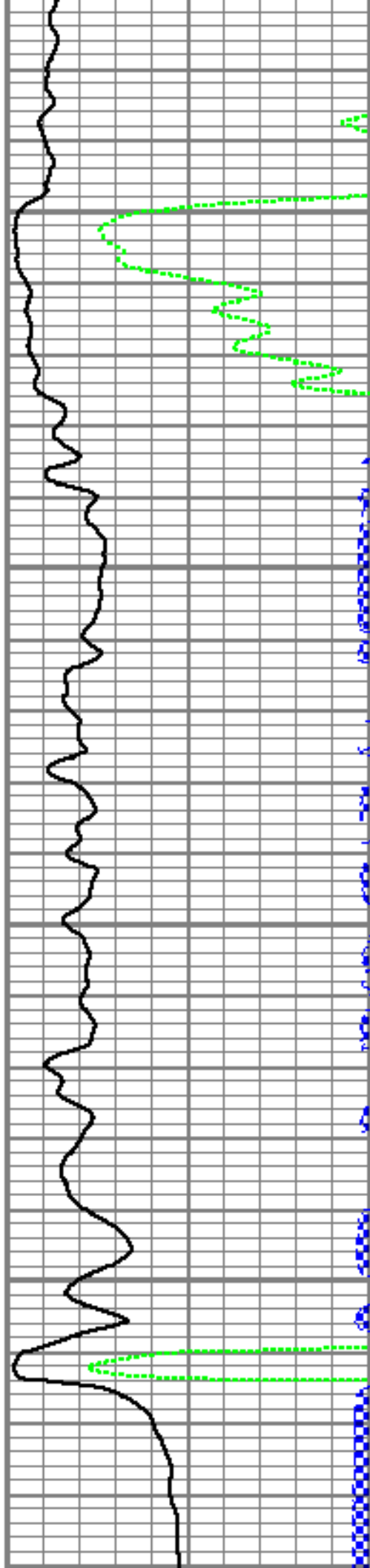
5200

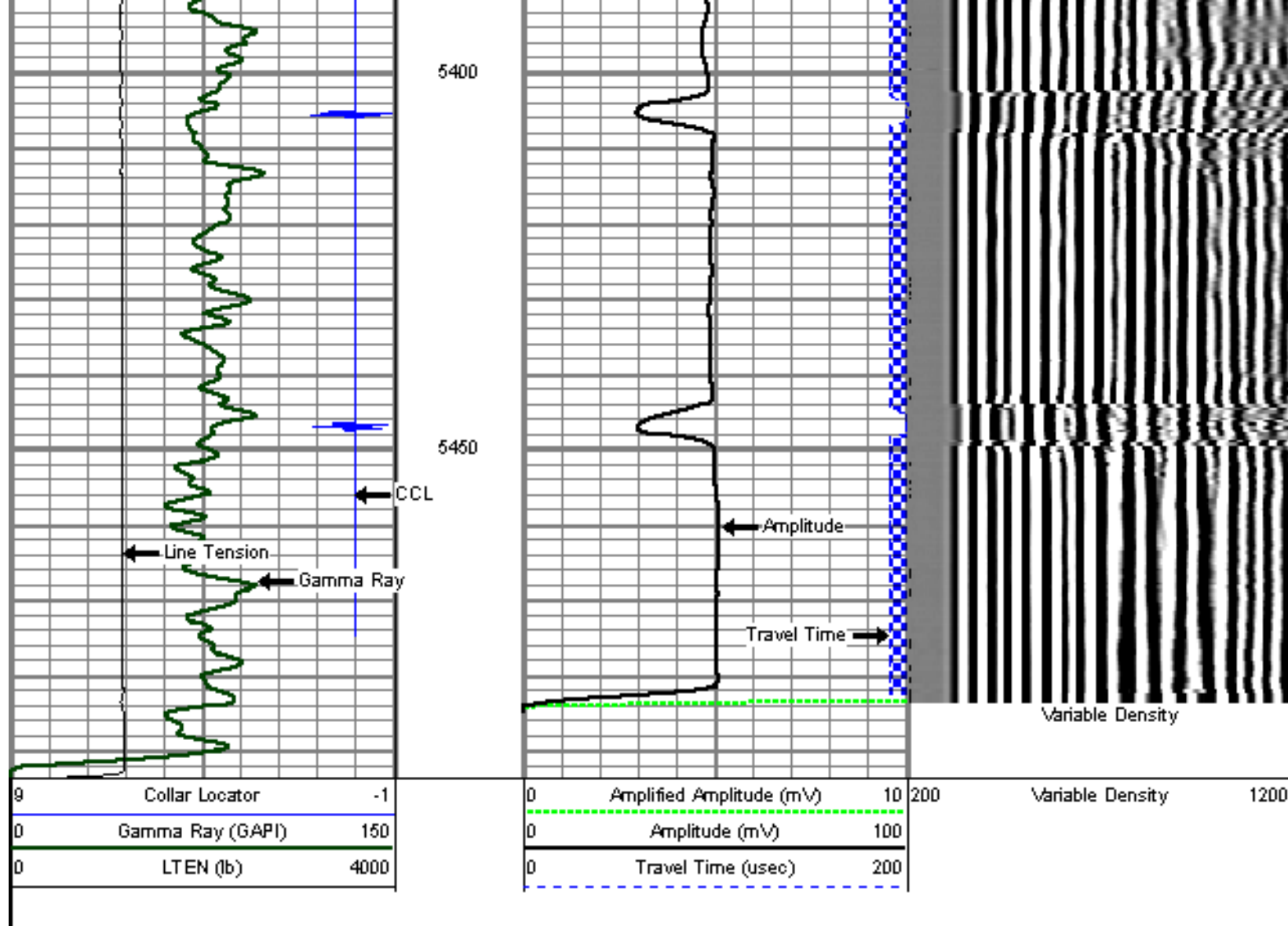
5250

5300

5350

DV Tool



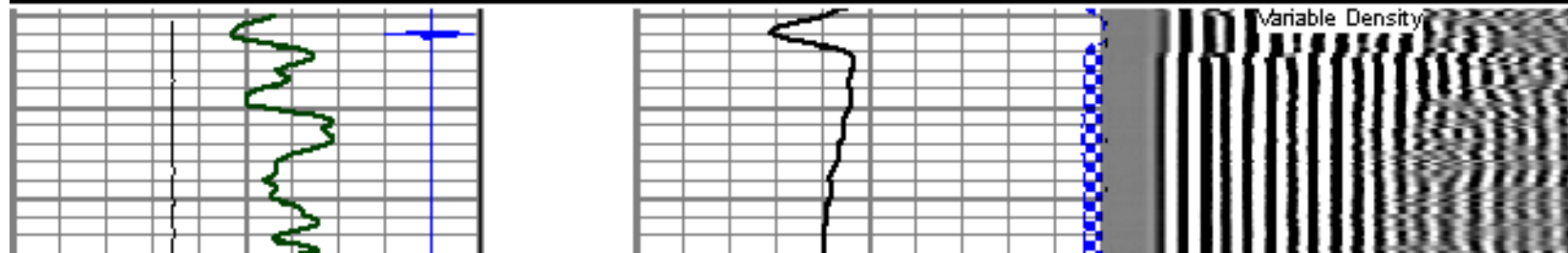
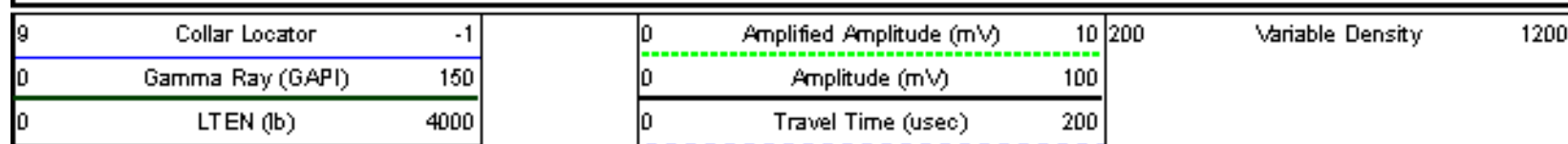


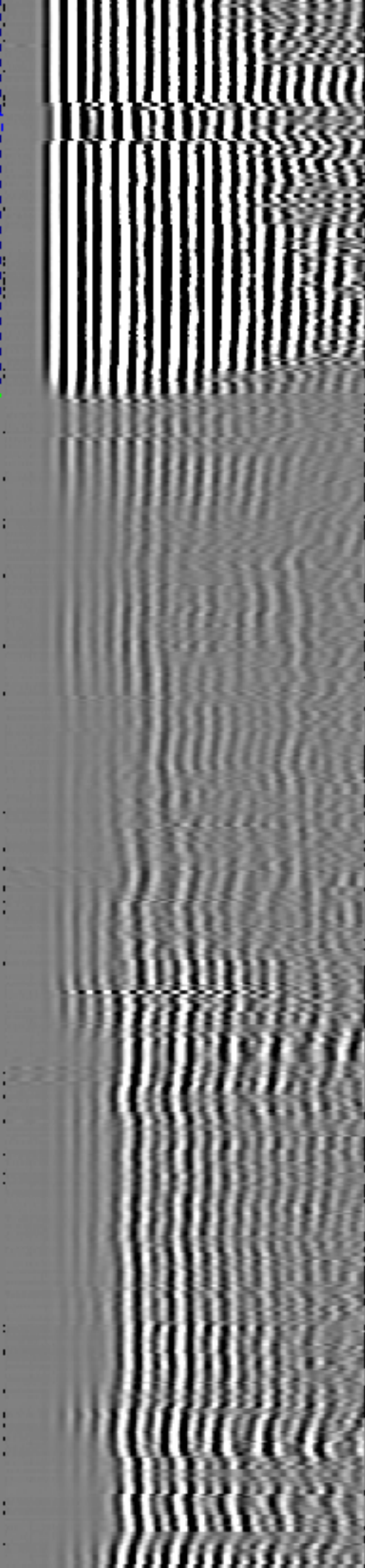
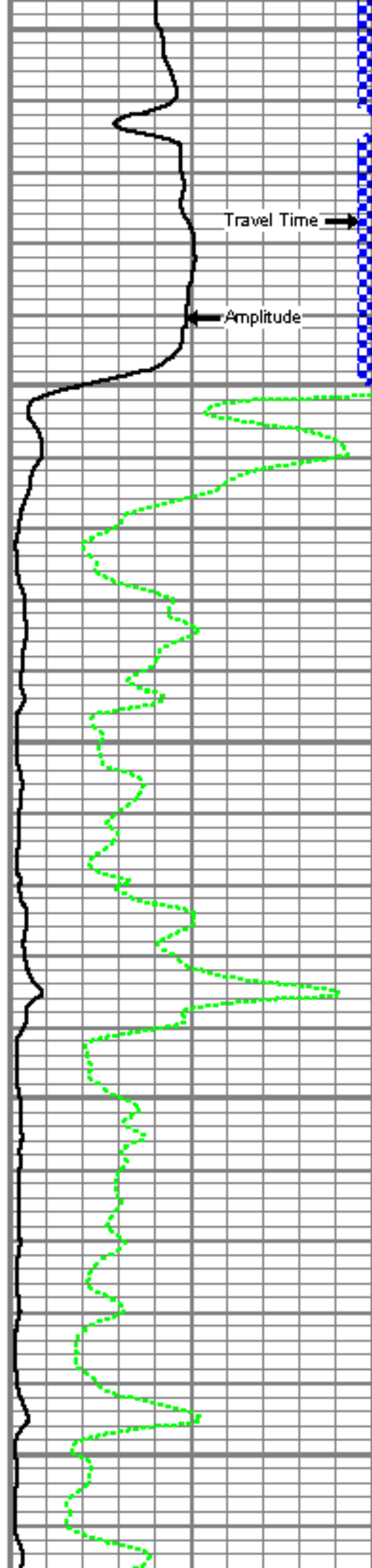
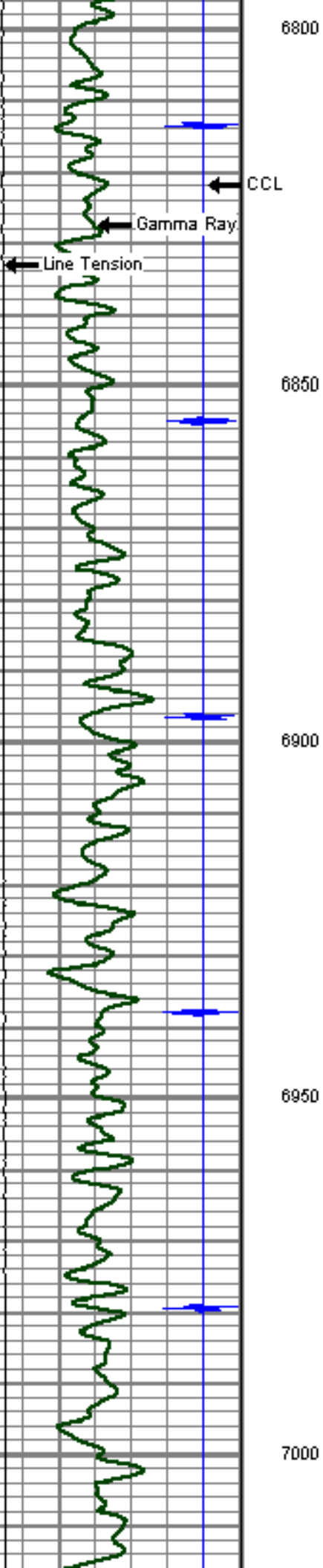
MAIN LOG SECTION

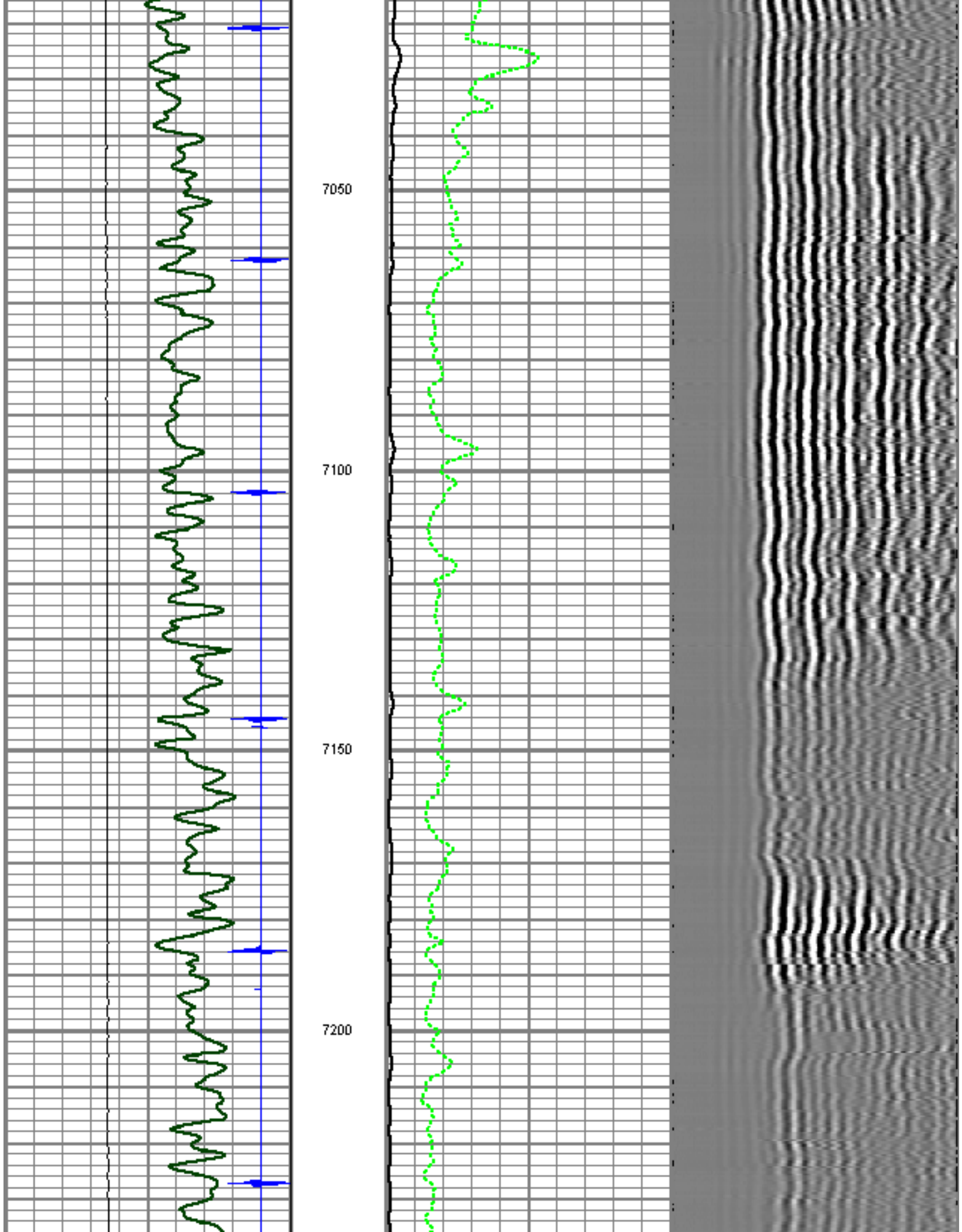
LOWER PASS

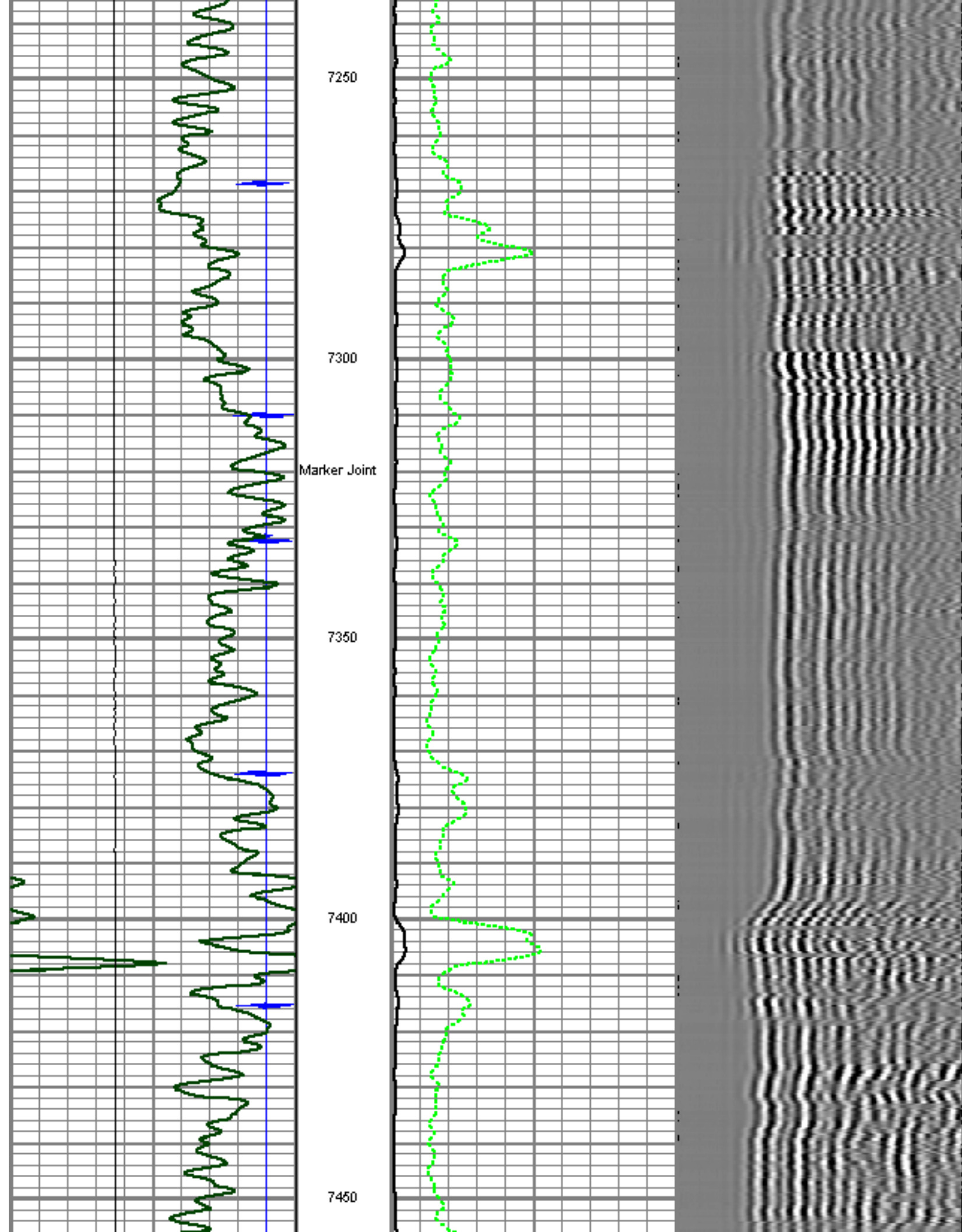
5" = 100'

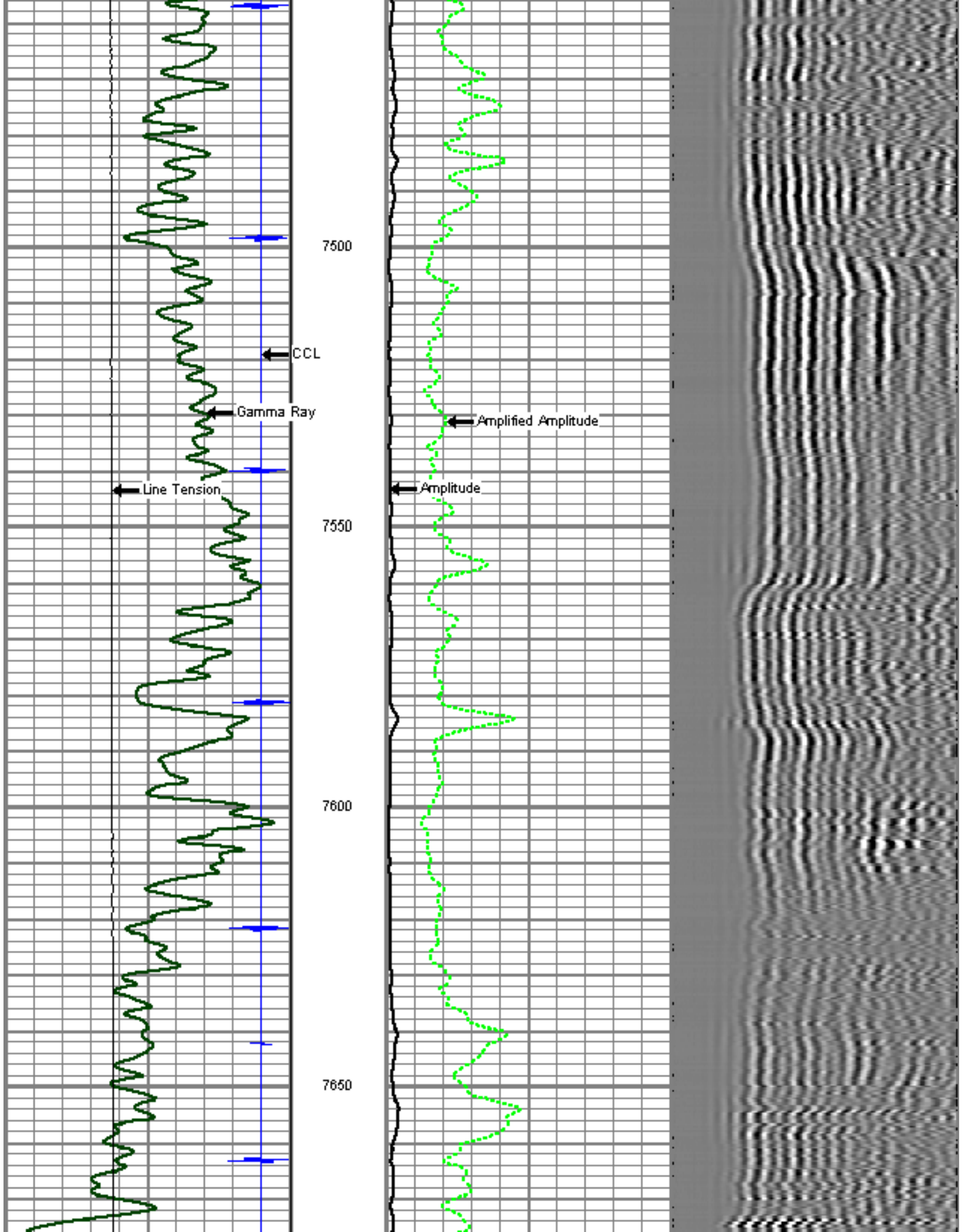
Database File: kenyon 34-19.db
 Dataset Pathname: pass8
 Presentation Format: cbl01son
 Dataset Creation: Mon Mar 14 10:19:06 2011 by Log SCH 110223
 Charted by: Depth in Feet scaled 1:240

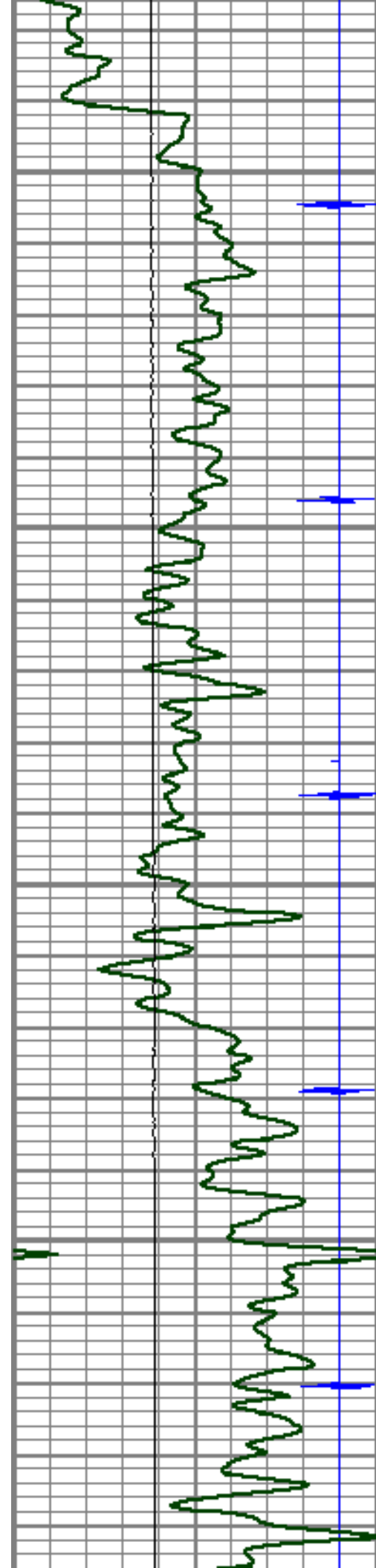










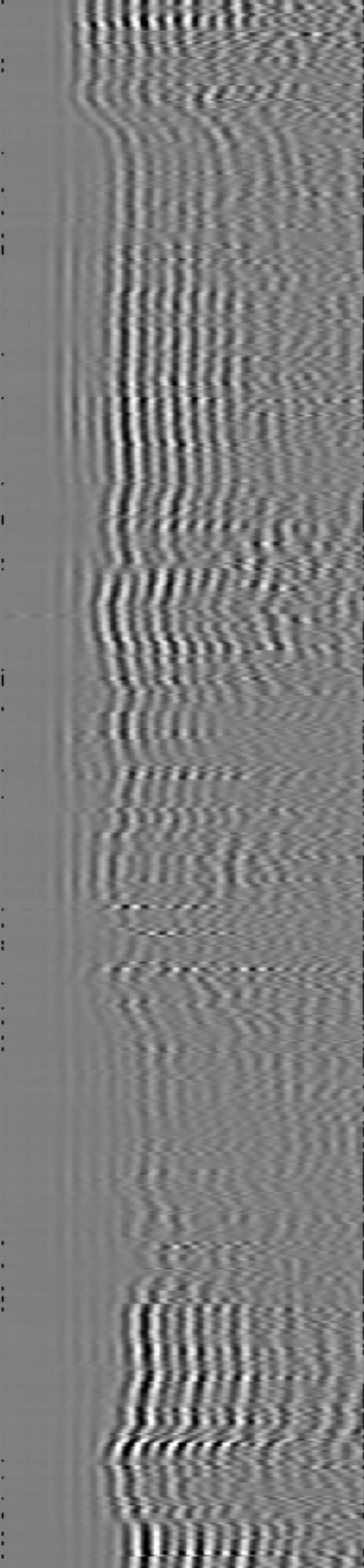
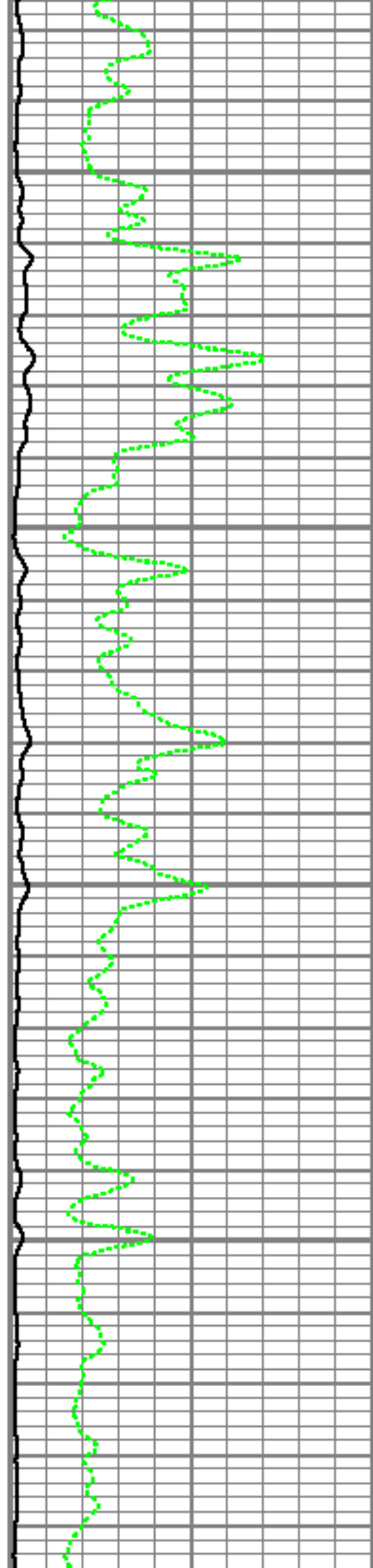


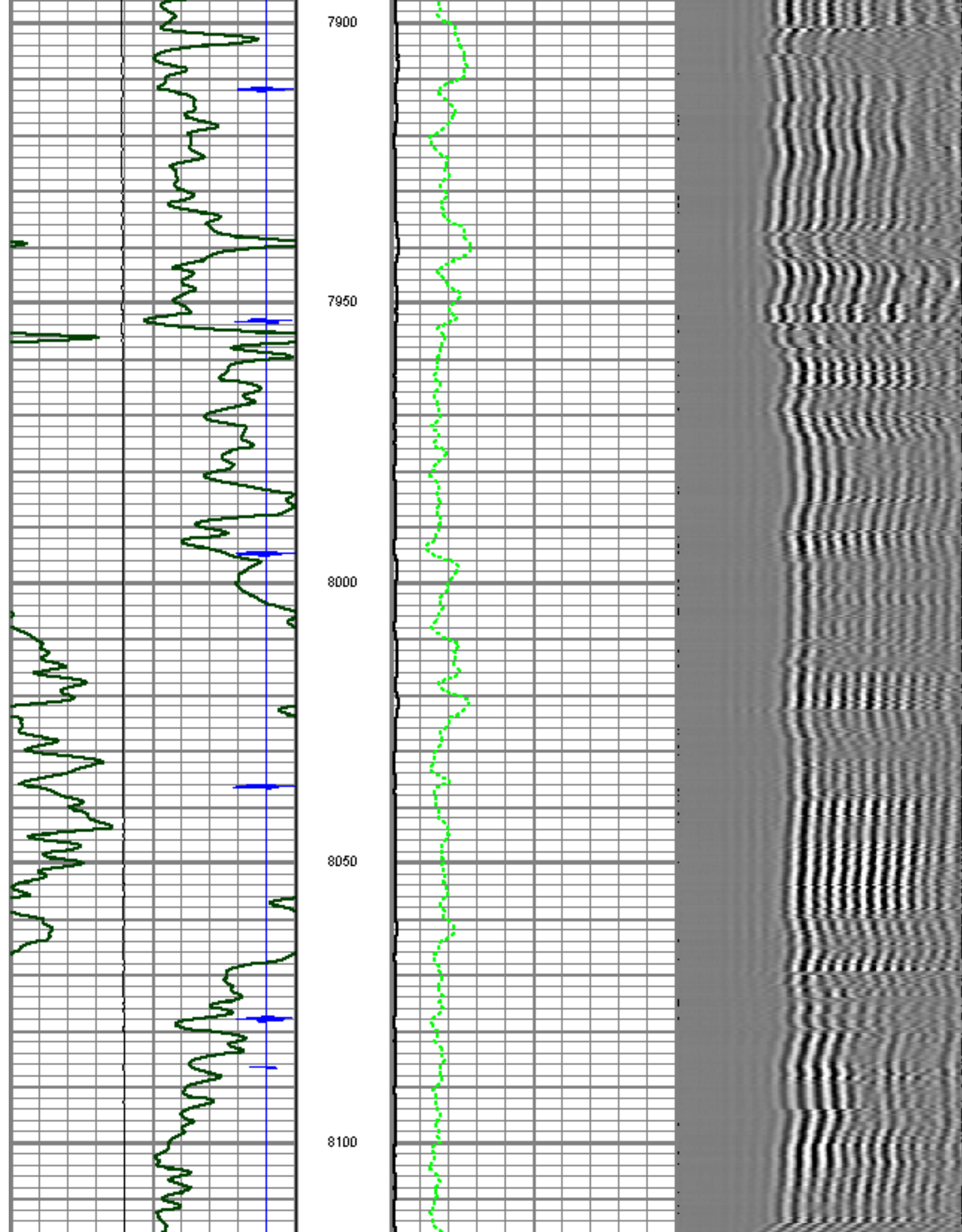
7700

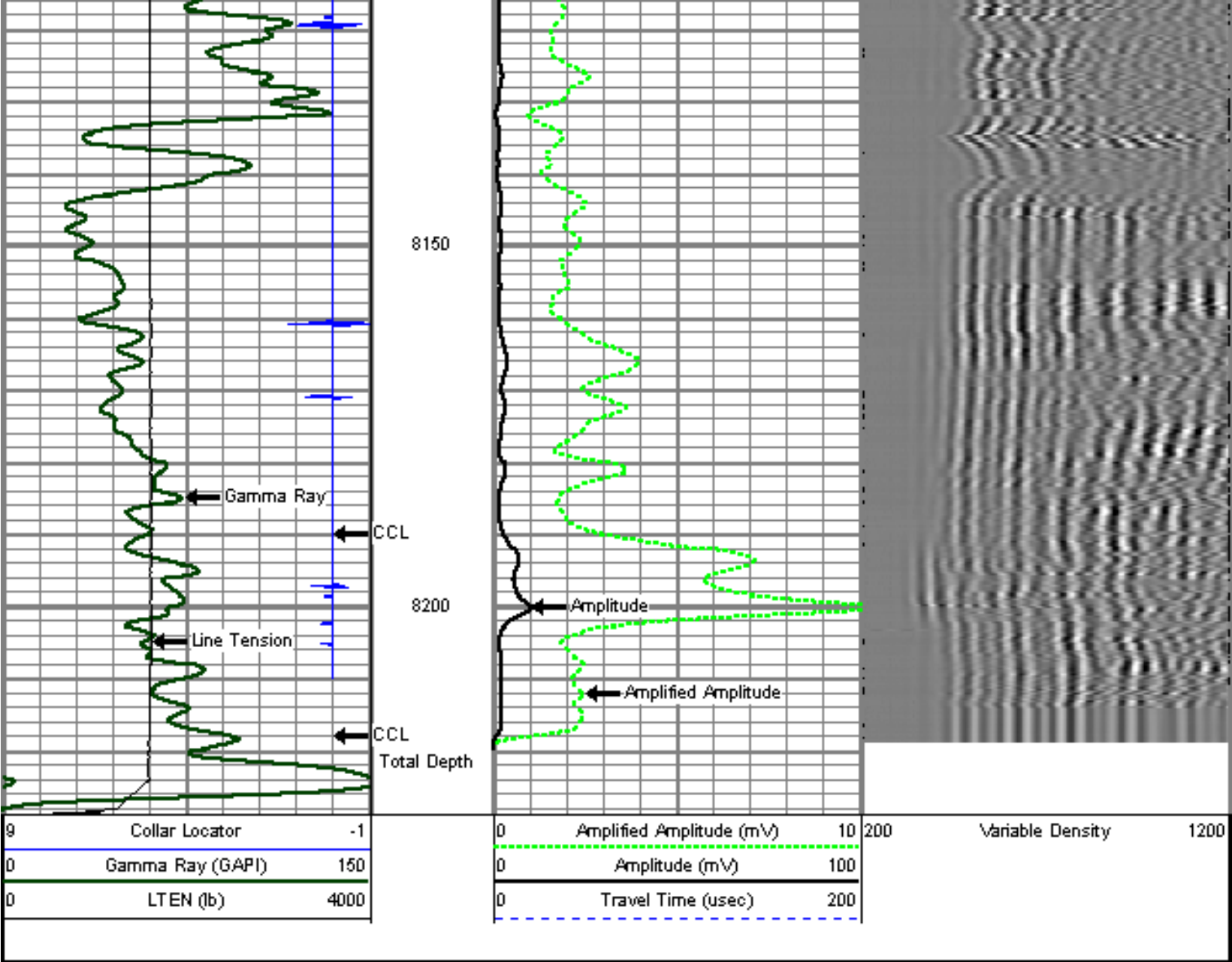
7750

7800

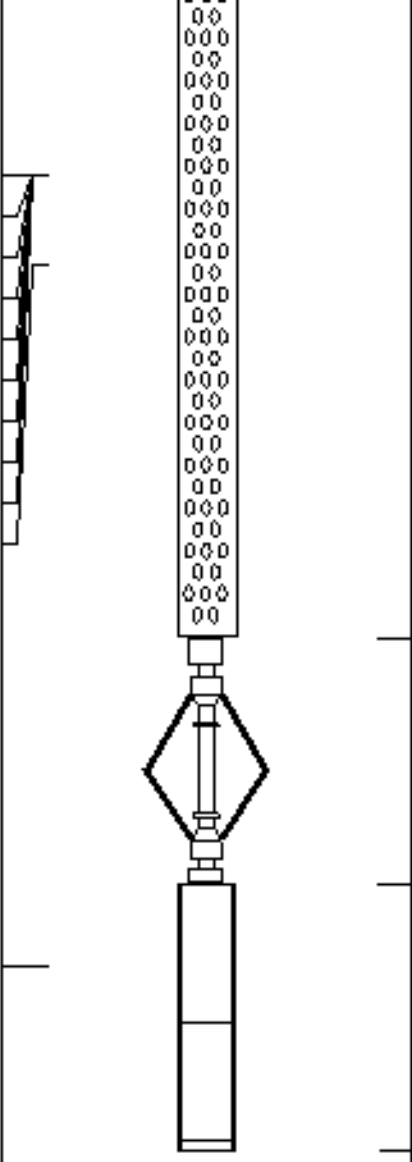
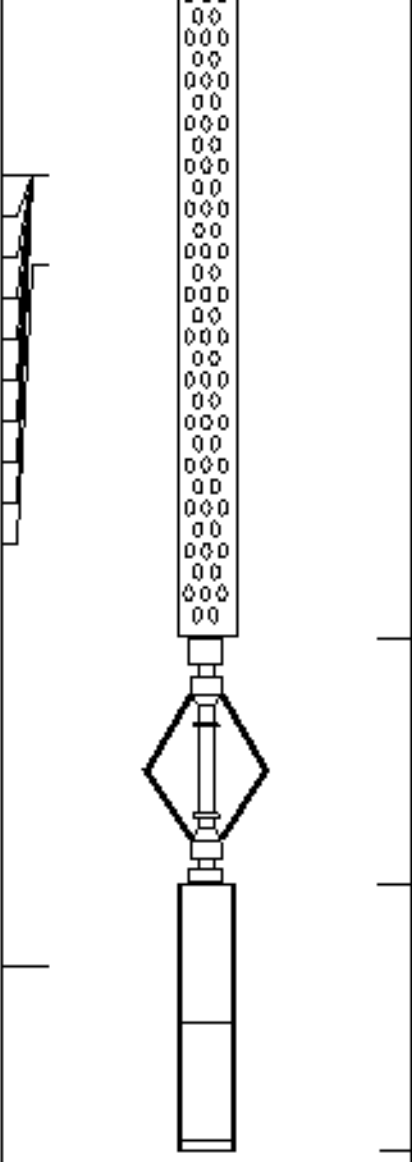
7850








Sensor	Offset (ft)	Schematic	Description	Len (ft)	OD (in)	Wt (lb)
CCL	18.54		titan	1.00	1.69	2.00
			SNDX_CCL-SNDX_3_13_CCL (000001) CSS Gamma Ray/CCL (CCL Section)	1.92	3.13	11.02
			SONDEX	2.71	2.75	32.00

WV3FT	10.78		SONDY_RBT-007 (000004) Radial Bond Tool - Analog 3 1/8	9.47	3.13	140.00
WVFS1	10.78					
WVFS2	10.78					
WVFS3	10.78					
WVFS4	10.78					
WVFS5	10.78					
WVFS6	10.78					
WVFS7	10.78					
WVFS8	10.78					
WV5FT	9.78					
GR	2.03		SONDEX	2.71	2.75	32.00
			SONDX_GR-SONDX_3_13_GR (000002) Sondex Production Gamma Ray	2.94	3.13	22.05
Dataset: kenyon 34-19.db: field/well/run1/pass9 Total Length: 20.75 ft Total Weight: 239.07 lb O.D.: 3.13 in						

	Company	ENCANA OIL & GAS (USA) INC.
	Well	KENYON 34-19
	Field	WATTENBURG
	County	WELD
	State	COLORADO