

HALLIBURTON

XTO ENERGY INC EBUSINESS

Apache Canyon 20-15

Las Animas County , Colorado

Cement Multiple Stages

26-Jun-2011

Job Site Documents

The Road to Excellence Starts with Safety

Sold To #: 353810	Ship To #: 2862066	Quote #:	Sales Order #: 8273927
Customer: XTO ENERGY INC EBUSINESS	Customer Rep:		
Well Name: Apache Canyon	Well #: 20-15	API/UWI #:	
Field:	City (SAP): TRINIDAD	County/Parish: Las Animas	State: Colorado
Contractor: ??	Rig/Platform Name/Num: ??		
Job Purpose: Cement Multiple Stages			
Well Type: Development Well	Job Type: Cement Multiple Stages		
Sales Person: FLING, MATTHEW	Srvc Supervisor: SIPNEFSKI, ROBERT	MBU ID Emp #: 419391	

Job Personnel

HES Emp Name	Exp Hrs	Emp #	HES Emp Name	Exp Hrs	Emp #	HES Emp Name	Exp Hrs	Emp #
CONGDON, RICHARD S.	6	320306	HALE, ROBERT E	6	470588	PAUMEN, CORD Anthony	6	453759
SIPNEFSKI, ROBERT Anthony	6	419391	SNYDER, JONATHAN Leroy	6	435616	VIGIL, NICHOLAS	6	443481

Equipment

HES Unit #	Distance-1 way	HES Unit #	Distance-1 way	HES Unit #	Distance-1 way	HES Unit #	Distance-1 way

Job Hours

Date	On Location Hours	Operating Hours	Date	On Location Hours	Operating Hours	Date	On Location Hours	Operating Hours
6/26/11	6	2.5						

TOTAL Total is the sum of each column separately

Job

Formation Name	Formation Depth (MD)	Top	Bottom	Form Type	Job depth MD	Job Depth TVD	Water Depth	Perforation Depth (MD)	From	To
				BHST	2470. ft	2470. ft				
							Wk Ht Above Floor			

Job Times

Date	Time	Time Zone
26 - Jun - 2011	09:00	MST
26 - Jun - 2011	00:00	MST
26 - Jun - 2011	00:00	MST
26 - Jun - 2011	00:00	MST
26 - Jun - 2011	00:00	MST

Well Data

Description	New / Used	Max pressure psig	Size in	ID in	Weight lbm/ft	Thread	Grade	Top MD ft	Bottom MD ft	Top TVD ft	Bottom TVD ft
13 3/8" Openhole				7.875				492.	2480.		
Multiple Stage Cementer	Unknown							.	1762.		
5 1/2" Production Casing	Unknown		5.5	4.95	15.5		J-55	.	2449.		
8 5/8" Surface Casing	Unknown		8.625	8.097	24.		J-55	.	680.		

Tools and Accessories

Type	Size	Qty	Make	Depth	Type	Size	Qty	Make	Depth	Type	Size	Qty	Make
Guide Shoe					Packer					Top Plug			
Float Shoe					Bridge Plug					Bottom Plug			
Float Collar					Retainer					SSR plug set			
Insert Float										Plug Container			
Stage Tool										Centralizers			

Miscellaneous Materials

Gelling Agt	Conc	Surfactant	Conc	Acid Type	Qty	Conc	%
Treatment Fld	Conc	Inhibitor	Conc	Sand Type	Size	Qty	

Fluid Data

Stage/Plug #: 1	Fluid #	Stage Type	Fluid Name	Qty	Qty uom	Mixing Density lbm/gal	Yield ft ³ /sk	Mix Fluid Gal/sk	Rate bbl/min	Total Mix Fluid Gal/sk
-----------------	---------	------------	------------	-----	---------	------------------------	---------------------------	------------------	--------------	------------------------

HALLIBURTON**Cementing Job Summary**

1	FRESH WATER			bbl	8.33	.0	.0	.0	
2	GELLED WATER			bbl	8.33	.0	.0	.0	
0.2 gal/Mgal		LGC-VI UC, BULK (101582755)							
3	TUNED LIGHT TRINIDAD	TUNED LIGHT (TM) SYSTEM (452984)		sacks	10.	2.3	8.37		8.37
8.37 Gal		FRESH WATER							
4	DISPLACEMENT			bbl	8.33	.0	.0	.0	
Stage/Plug #: 2									
Fluid #	Stage Type	Fluid Name	Qty	Qty uom	Mixing Density uom	Yield uom	Mix Fluid uom	Rate uom	Total Mix Fluid uom
1	FRESH WATER			bbl	8.33	.0	.0	.0	
2	GELLED WATER			bbl	8.33	.0	.0	.0	
0.2 gal/Mgal		LGC-VI UC, BULK (101582755)							
3	TUNED LIGHT TRINIDAD	TUNED LIGHT (TM) SYSTEM (452984)		sacks	10.	2.3	8.37		8.37
8.37 Gal		FRESH WATER							
4	DISPLACEMENT			bbl	8.33	.0	.0	.0	
Calculated Values		Pressures		Volumes					
Displacement		Shut In: Instant		Lost Returns		Cement Slurry		Pad	
Top Of Cement		5 Min		Cement Returns		Actual Displacement		Treatment	
Frac Gradient		15 Min		Spacers		Load and Breakdown		Total Job	
Rates									
Circulating		Mixing		Displacement		Avg. Job			
Cement Left In Pipe		Amount 46 ft	Reason	Shoe Joint					
Frac Ring # 1 @	ID	Frac ring # 2 @	ID	Frac Ring # 3 @	ID	Frac Ring # 4 @	ID		
The Information Stated Herein Is Correct				Customer Representative Signature					

The Road to Excellence Starts with Safety

Sold To #: 353810	Ship To #: 2862066	Quote #:	Sales Order #: 8273927
Customer: XTO ENERGY INC EBUSINESS		Customer Rep:	
Well Name: Apache Canyon	Well #: 20-15	API/UWI #:	
Field:	City (SAP): TRINIDAD	County/Parish: Las Animas	State: Colorado
Legal Description:			
Lat:		Long:	
Contractor: ??		Rig/Platform Name/Num: ??	
Job Purpose: Cement Multiple Stages			Ticket Amount:
Well Type: Development Well		Job Type: Cement Multiple Stages	
Sales Person: FLING, MATTHEW		Srvc Supervisor: SIPNEFSKI, ROBERT	MBU ID Emp #: 419391

Activity Description	Date/Time	Cht #	Rate bbl/ min	Volume bbl		Pressure psig		Comments
				Stage	Total	Tubing	Casing	
Arrive at Location from Service Center	06/26/2011 11:00							
Assessment Of Location Safety Meeting	06/26/2011 11:05							
Start Job	06/26/2011 14:14							
Pump Spacer 1	06/26/2011 14:15		3	30			-5.0	Mix and Pump 30bbl of gel spacer
Pump Spacer 2	06/26/2011 14:20		3	30			8.0	Pump 30 bbl H2O spacer
Pump Cement	06/26/2011 14:31		3	47			30.0	Mix and Pump 115 sks of tuned light cmt @ 10.0 #/gal mixed with H2O supplied by rig.
Shutdown	06/26/2011 14:39							
Clean Lines	06/26/2011 14:41							
Drop Top Plug	06/26/2011 14:43							Slow down From 39 bbl to 49 bbl going thru MSC tool
Pump Displacement	06/26/2011 14:44		3	59			224.0	Displace with H2O supplied by rig.
Bump Plug	06/26/2011 15:01		3				820.0	
Drop Opening Device For Multiple Stage Cementer	06/26/2011 15:07							
Open Multiple Stage Cementer	06/26/2011 15:14						1980.0	
Pump Spacer 1	06/26/2011 15:17		2	30			15.0	Mix and Pump 30 bbl Gel Spacer.
Pump Spacer 2	06/26/2011 15:30		2	10			-9.0	Pump 10 bbl H2O spacer
Activity Description	Date/Time	Cht #	Rate bbl/ min	Volume bbl		Pressure psig		Comments
				Stage	Total	Tubing	Casing	

Sold To #: 353810

Ship To #: 2862066

Quote #:

Sales Order #:

8273927

HALLIBURTON***Cementing Job Log***

Pump Cement	06/26/2011 15:40		3.5	102			423.0	Mix and Pump 250 sks of tuned light cmt @ 10.0 #/gal mixed with H2O supplied by rig.
Drop Top Plug	06/26/2011 16:13							
Pump Displacement	06/26/2011 16:13		3	44			400.0	Displace with H2O supplied by rig.
Close Multiple Stage Cementer	06/26/2011 16:35						2261. 0	
Release Casing Pressure	06/26/2011 16:37							
Check Floats	06/26/2011 16:37							Check Floats, Floats Held.
End Job	06/26/2011 16:40							

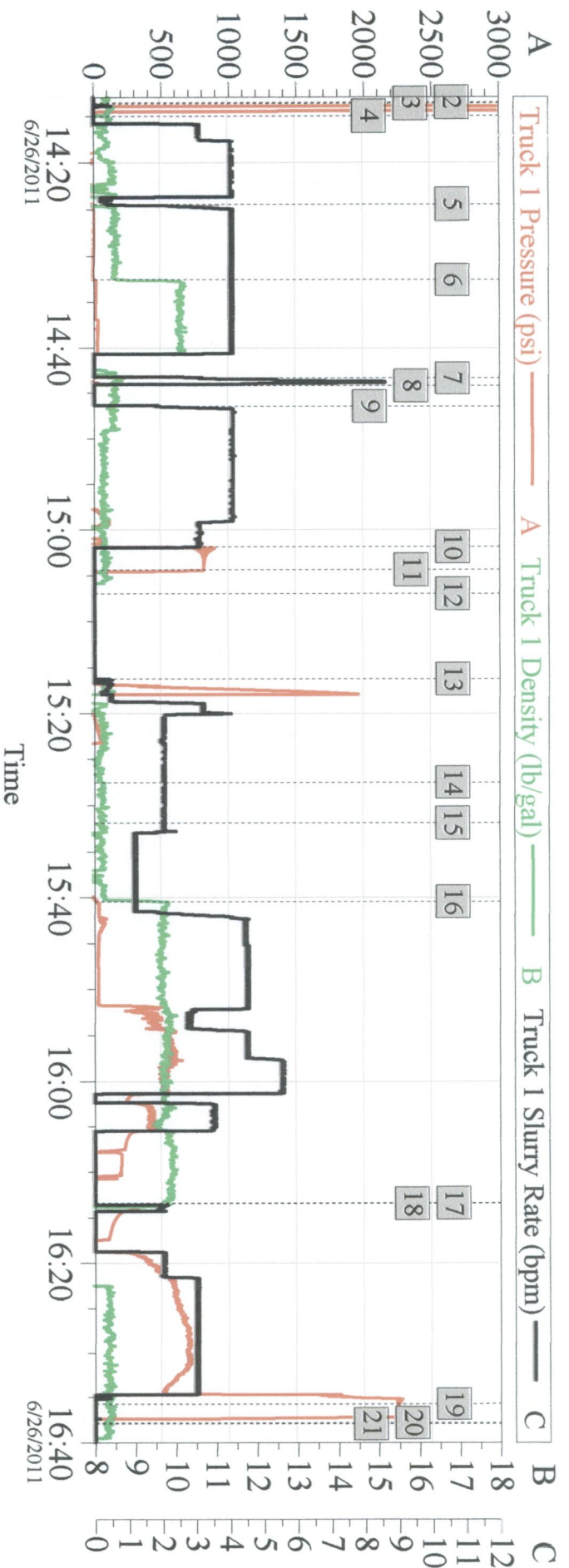
Sold To # : 353810

Ship To # :2862066

Quote # :

Sales Order # :

8273927



Global Event Log

Intersection				Intersection					
		T1P	T1D			T1P	T1D		
2	Start Job	14:13:34	-0.189	8.356	3	Test Lines	14:13:41	-0.861	8.357
4	Gel Water	14:15:02	-4.810	8.284	5	Fresh Water	14:24:25	0.000	-0.143
6	10ppg Tuned Light	14:32:32	21.19	8.602	7	Clean Lines	14:43:20	-8.930	8.777
8	Bottom Shutoff Plug	14:44:09	-12.64	8.558	9	Pump Displacement	14:46:25	-12.31	8.472
10	Bump Plug	15:01:54	-18.94	8.301	11	Check Floats	15:04:23	820.6	8.340
12	Opening Plug	15:07:00	-1.945	-0.355	13	Open Multiple Stage Cementer	15:16:12	-5.833	-0.355
14	Pump Spacer 1	15:27:30	-5.833	8.187	15	Pump Spacer 2	15:31:55	-8.282	8.251
16	Pump Tail Cement	15:40:27	23.92	9.628	17	Drop Top Plug	16:13:25	-14.58	9.788
18	Pump Displacement	16:13:29	-13.61	9.811	19	Close Multiple Stage Cementer	16:35:44	2248	8.334
20	Other	16:37:49	-0.313	8.314	21	End Job	16:37:58	3.889	8.419

Customer:
Well Description:

Job Date: 26-Jun-2011
UWI:

Sales Order #: 8273972

OptiCem v6.4.10
26-Jun-11 18:57