

# CEMENT BOND LOG

Company		XTO Energy Inc.	
Well		Apache Canyon 20-03	
Field		Purgatorie River	
County		Las Animas	
State		Colorado	
Location:		API #: 05-071-09864-00	
SEC 20 TWP 34S RGE 67W		668' FNL & 1435' FWL	
Permanent Datum		GL	
Log Measured From		G.L.	
Drilling Measured From		G.L.	
Date		7-12-11	
Run Number		one	
Depth Driller		2240'	
Depth Logger		2175'	
Bottom Logged Interval		2173'	
Top Log Interval		Surface	
Open Hole Size		7 7/8	
Type Fluid		water	
Density / Viscosity		///	
Max. Recorded Temp.		///	
Estimated Cement Top		26'	
Time Well Ready		Portable Mast	
Time Logger on Bottom		1:00 P.M.	
Equipment Number		T590	
Location		Trinidad	
Recorded By		C. Sisneros	
Witnessed By		E. Haught	
Run Number		Borehole Record	
Bit		From	
		To	
		Size	
		Weight	
		From	
		To	
Casing Record		Tubing Record	
Surface String		Size	
Prot. String		Wgt/Ft	
Production String		Top	
Liner		Bottom	
		500'	
		TD	

<<< Fold Here >>>

All interpretations are opinions based on inferences from electrical or other measurements and we cannot and do not guarantee the accuracy or correctness of any interpretation, and we shall not, except in the case of gross or willful negligence on our part, be liable or responsible for any loss, costs, damages, or expenses incurred or sustained by anyone resulting from any interpretation made by any of our officers, agents or employees. These interpretations are also subject to our general terms and conditions set out in our current Price Schedule.

## Comments

Main Pass logged under 1000 PSI.



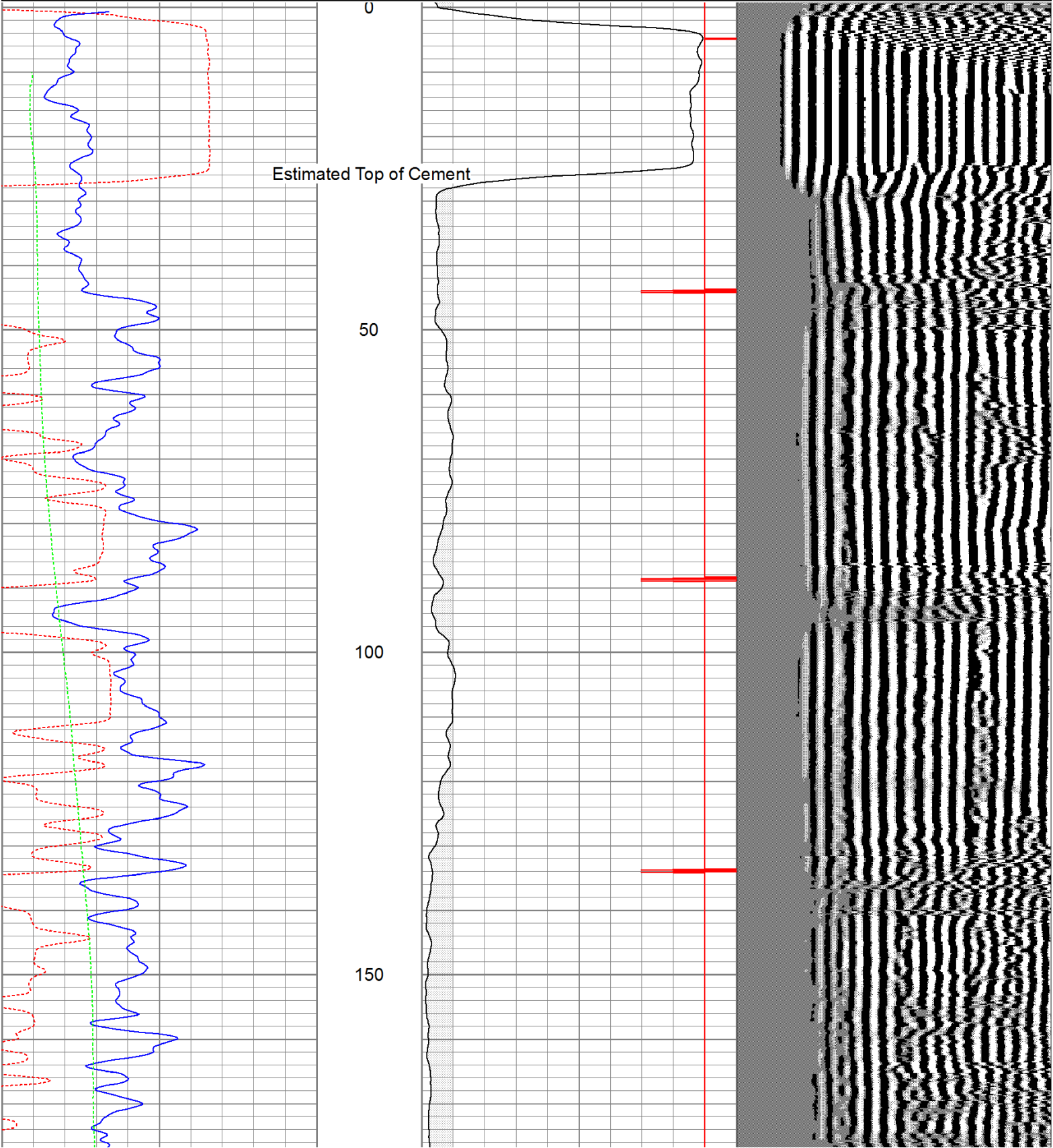
# Main Pass

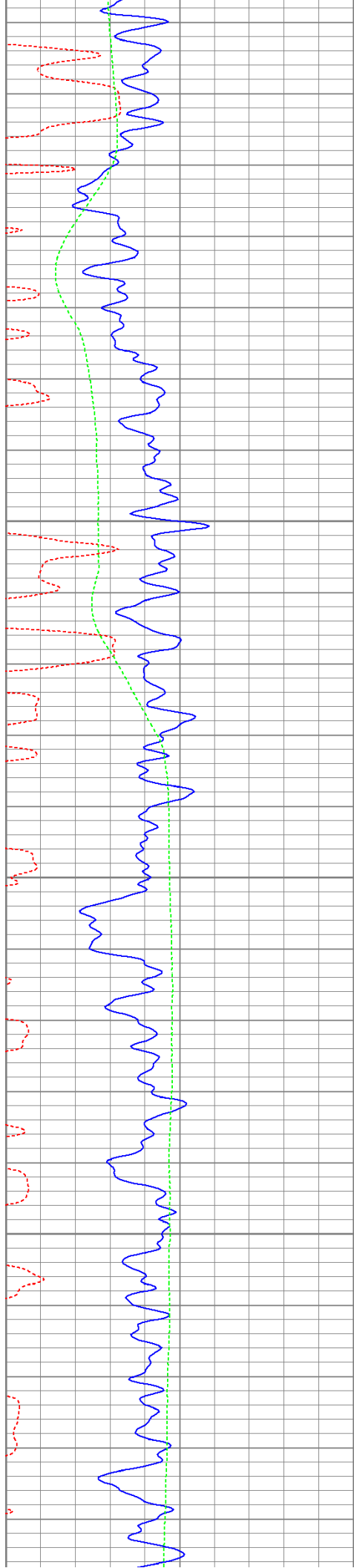
Database File: ac20-0371211b.db  
Dataset Pathname: pass2  
Presentation Format: cbldig  
Dataset Creation: Tue Jul 12 13:12:09 2011 by Log Open-Cased 110302  
Charted by: Depth in Feet scaled 1:240

400	Travel Time (usec)	200
0	GR (GAPI)	200
0	DEVI (°)	10

0	Amplitude (mV)	100
9	Collar Locator	-1

200 Variable Density 1200



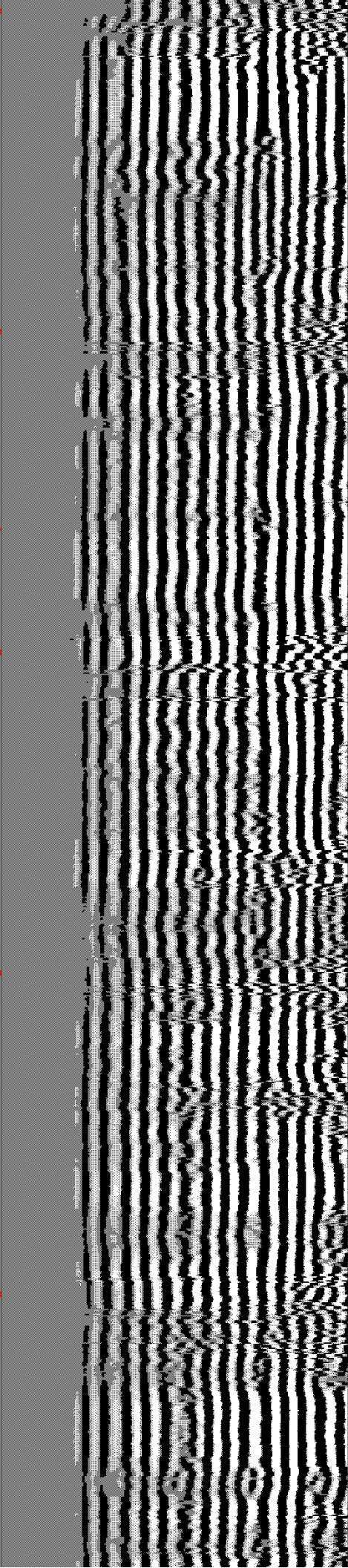
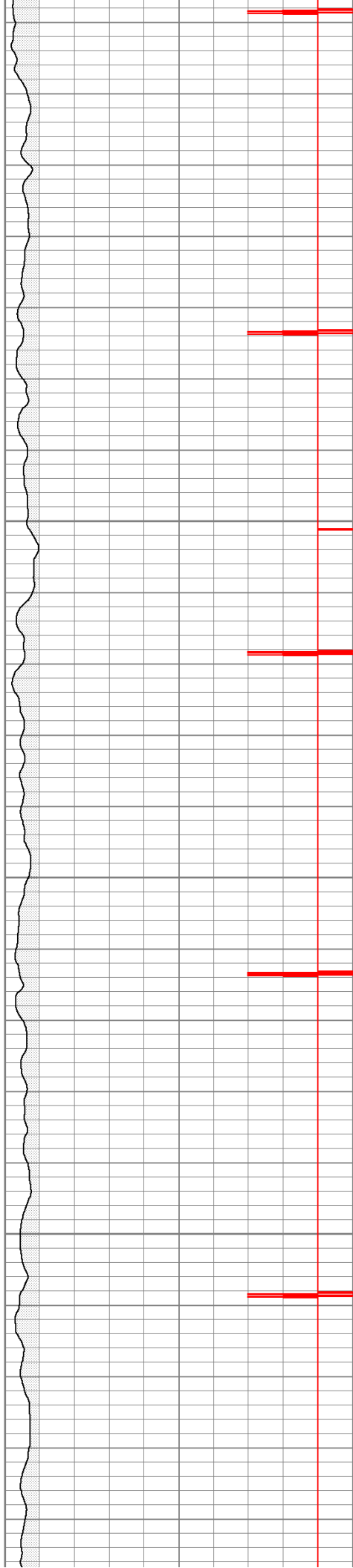


200

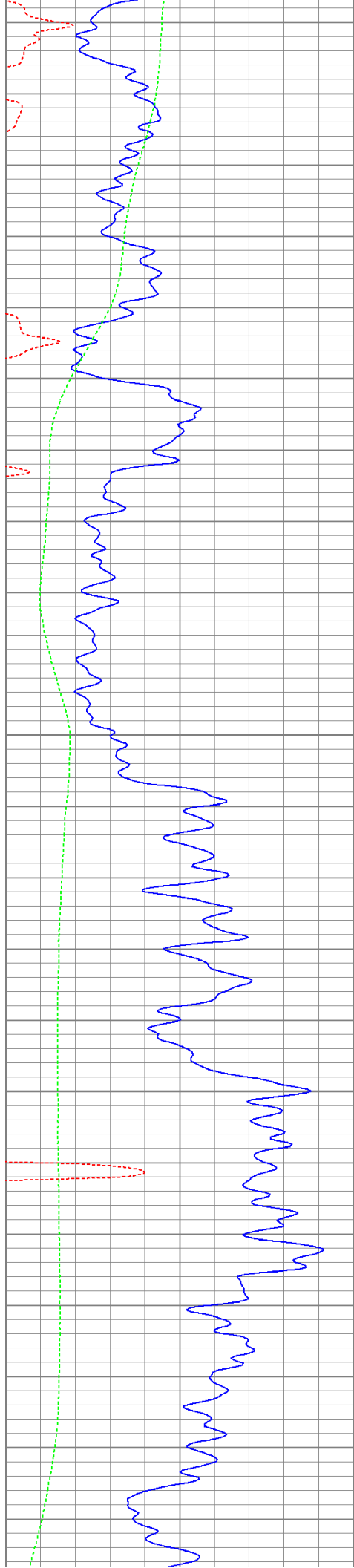
250

300

350







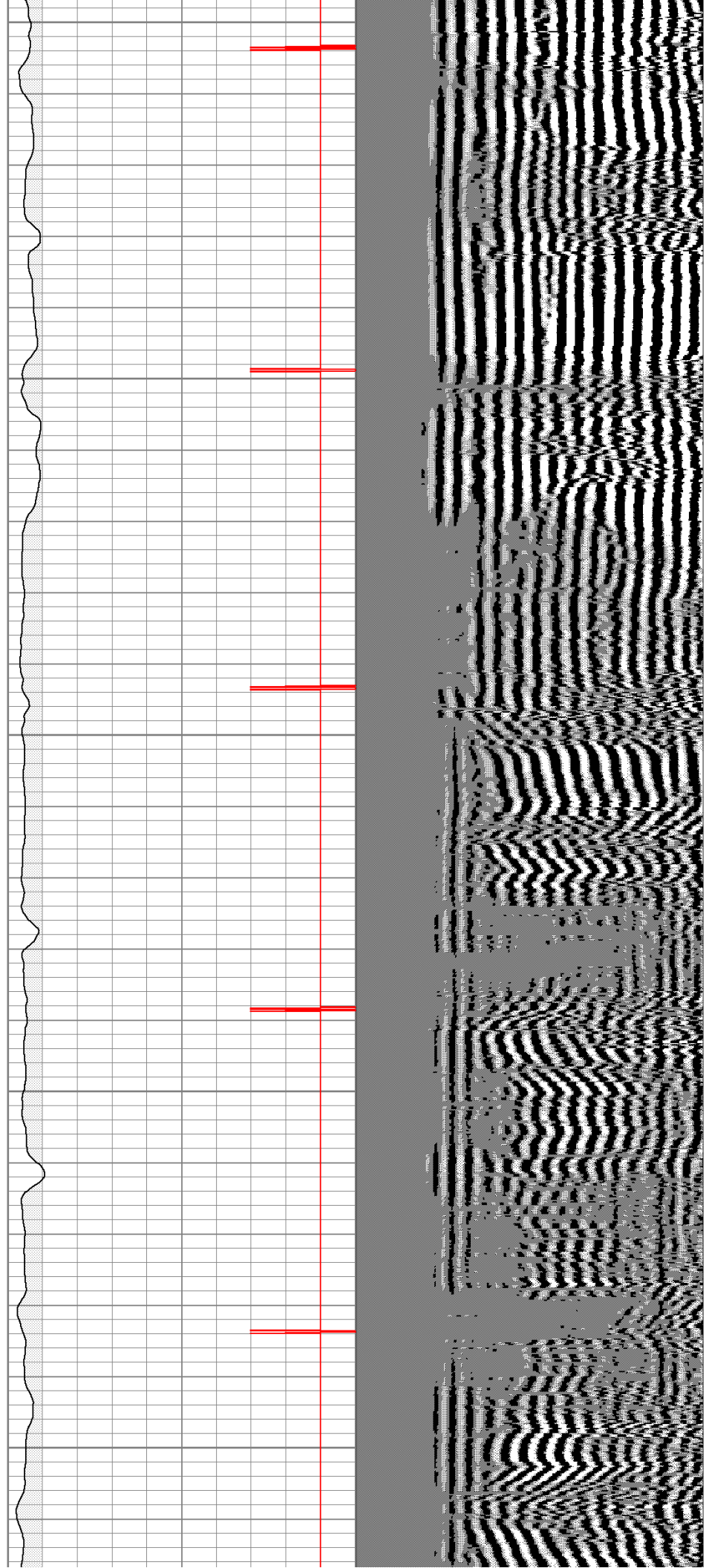
400

450

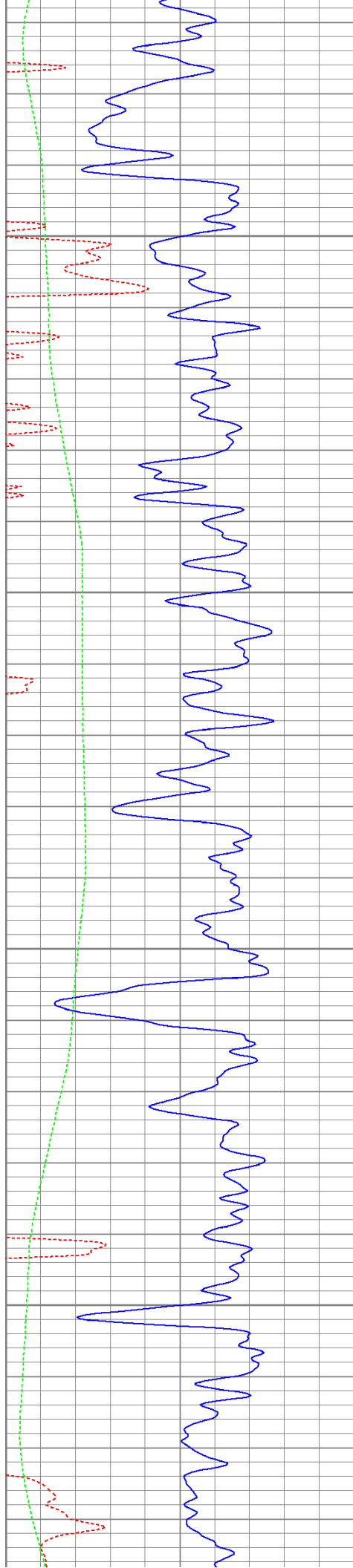
500

550

600





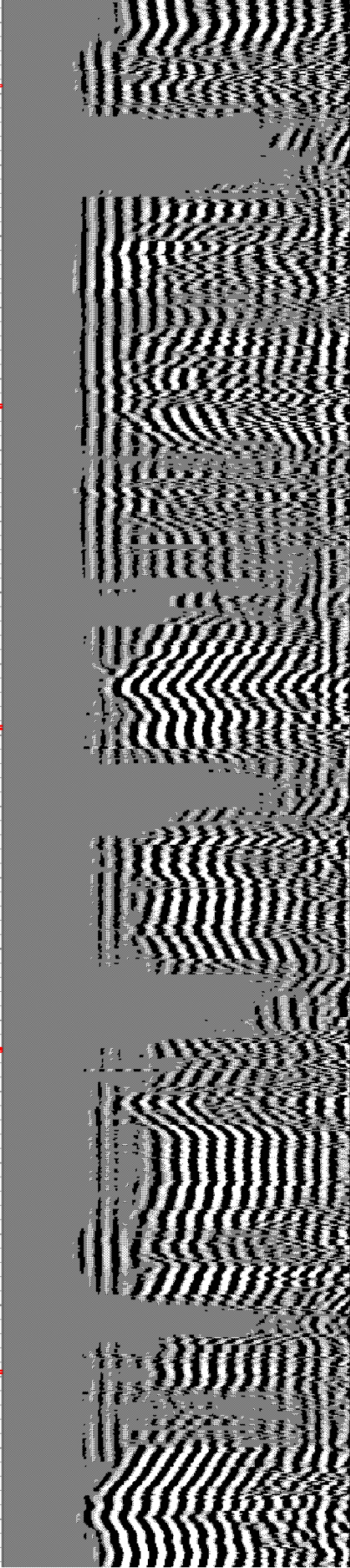
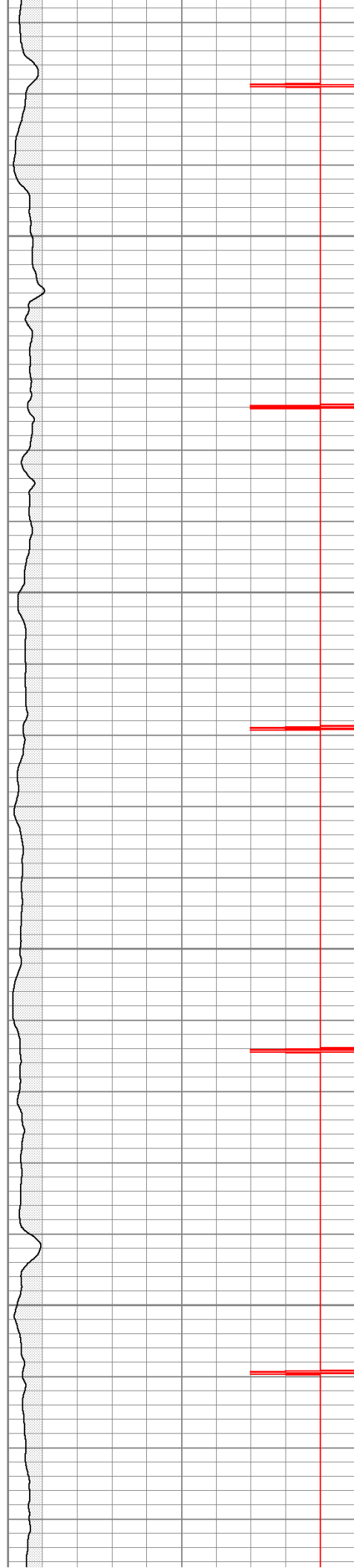


650

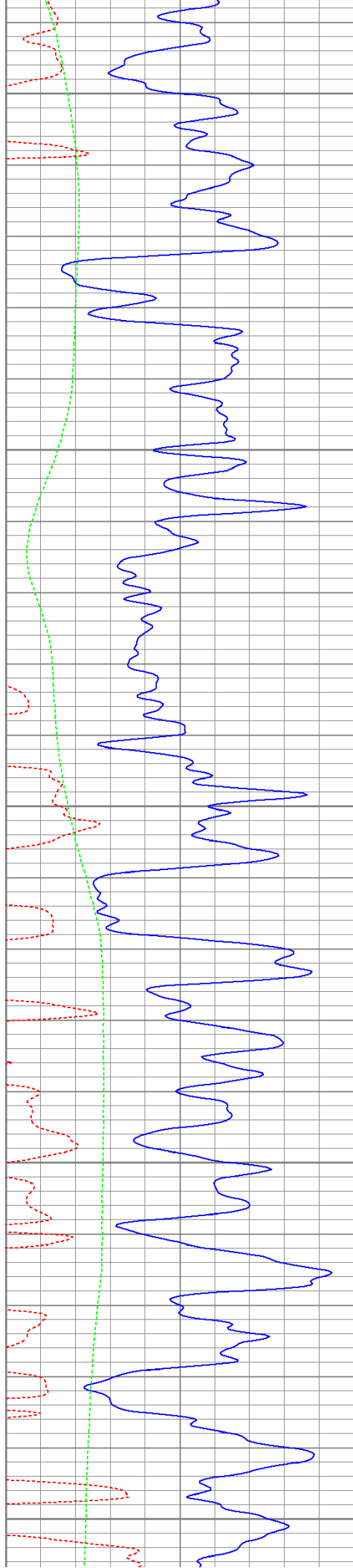
700

750

800







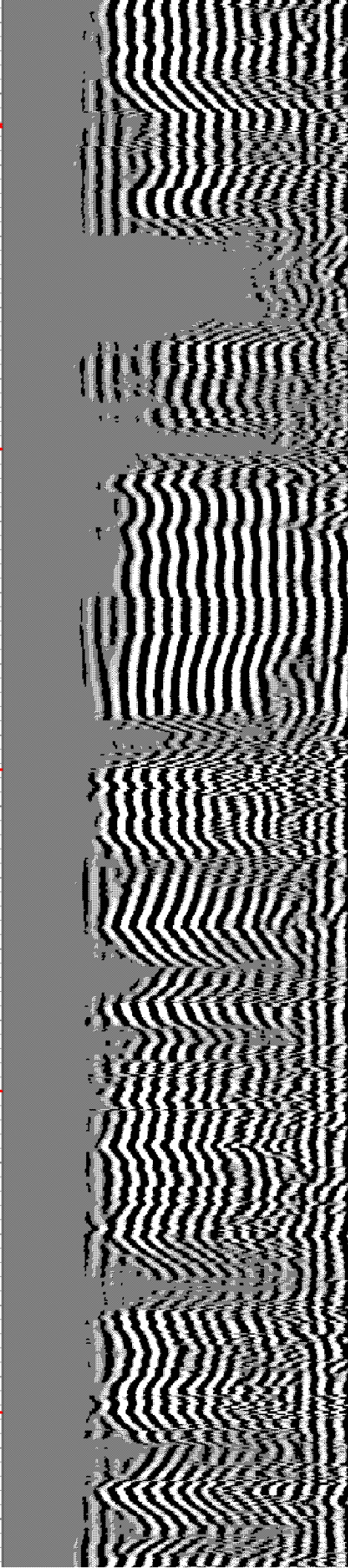
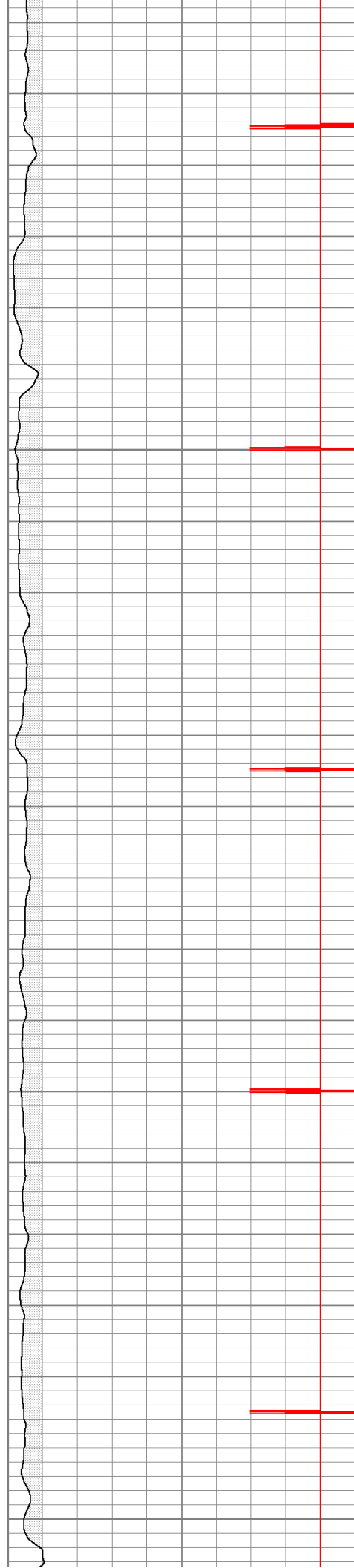
850

900

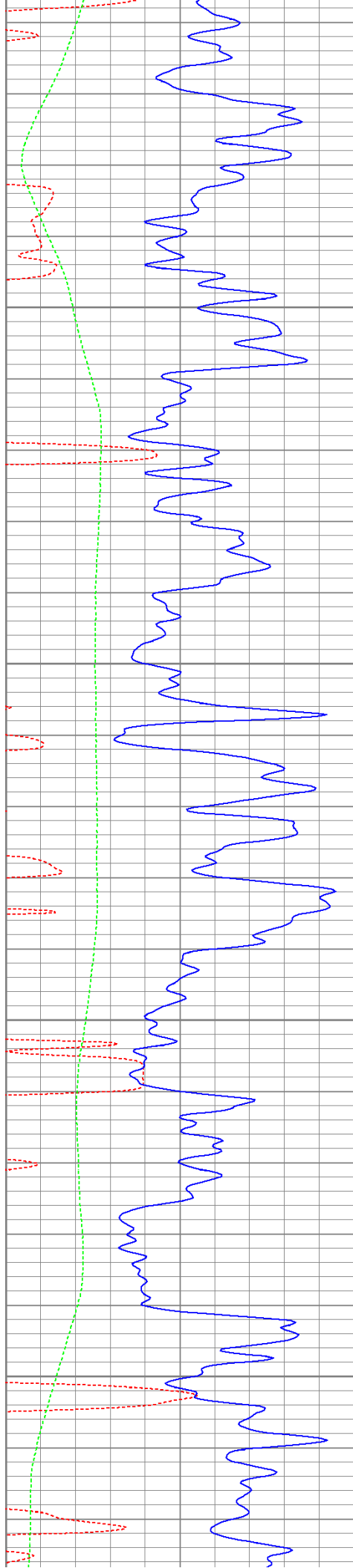
950

1000

1050





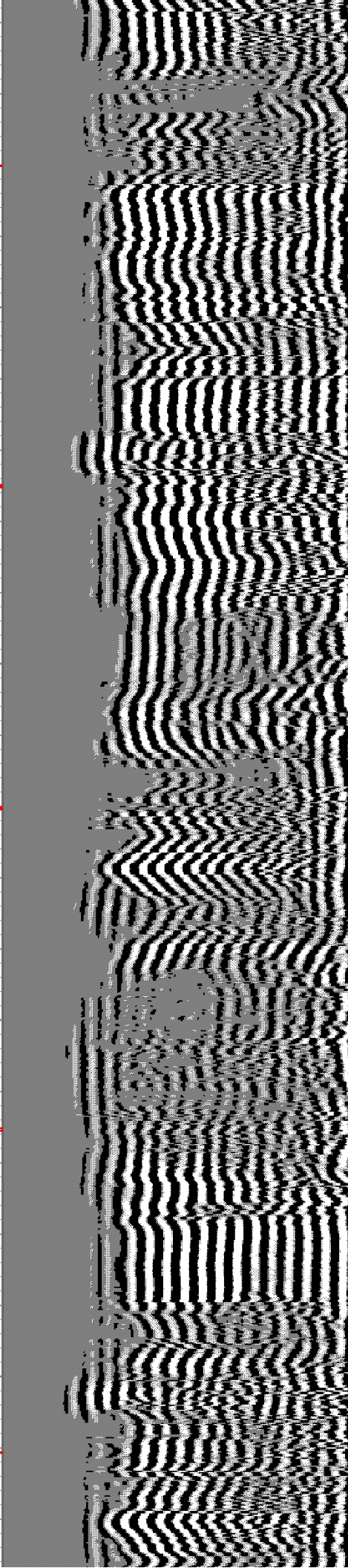


1100

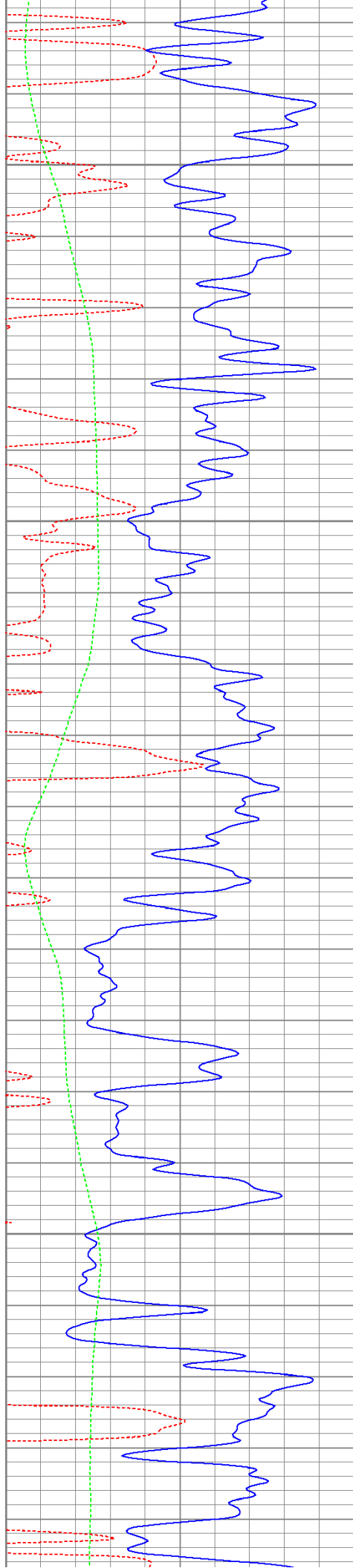
1150

1200

1250





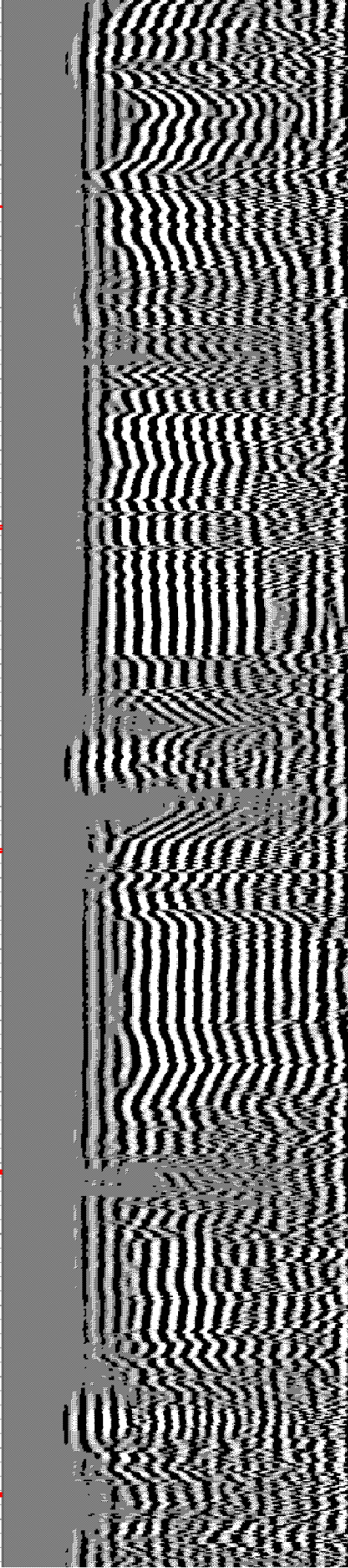
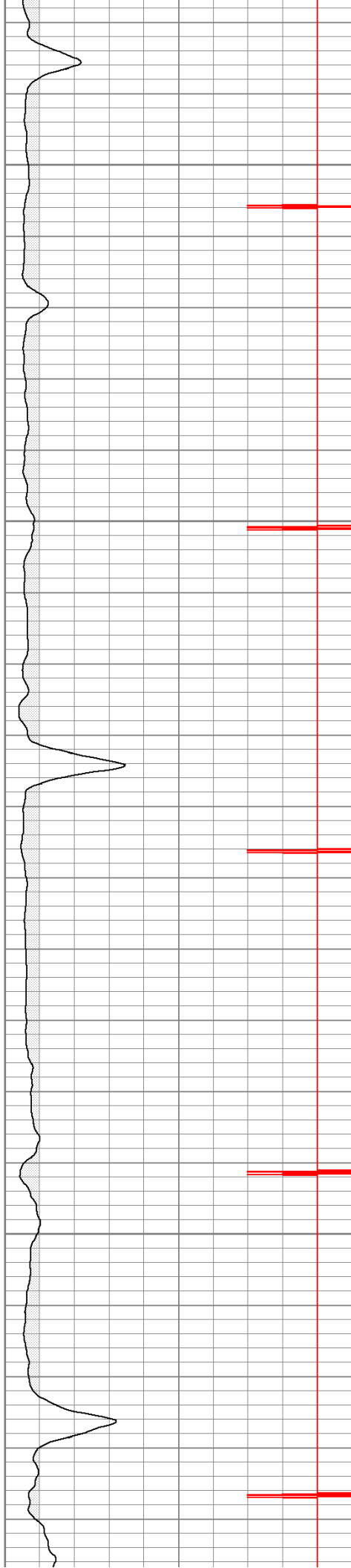


1300

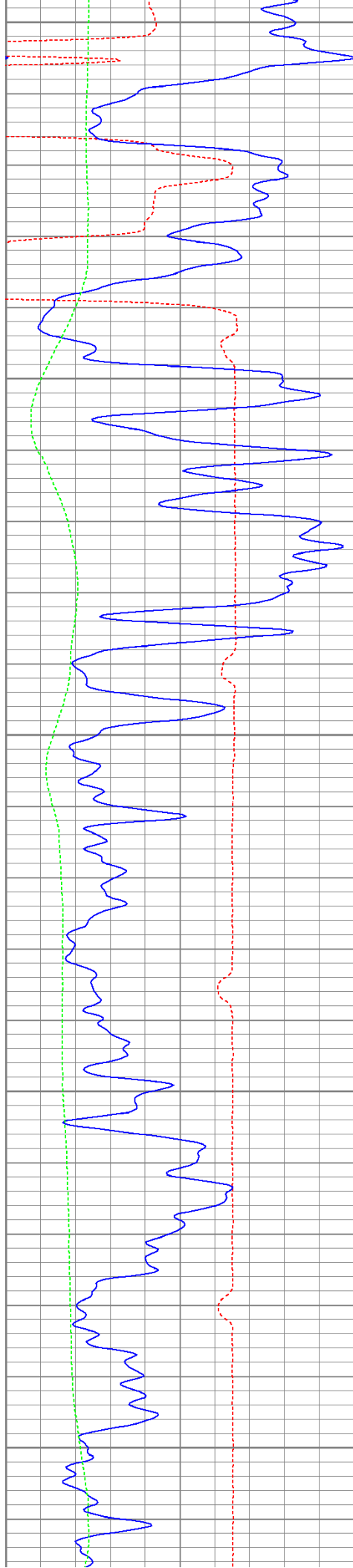
1350

1400

1450







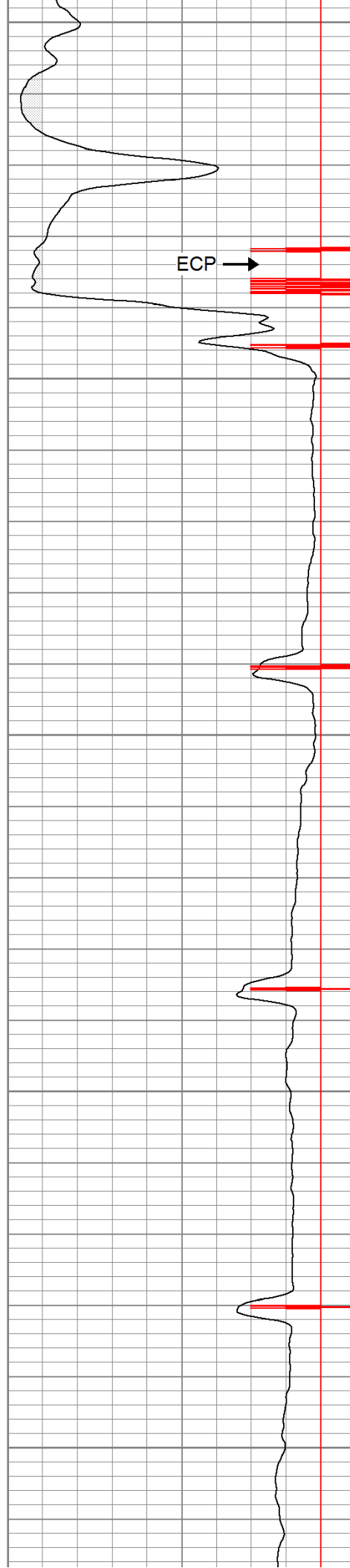
1500

1550

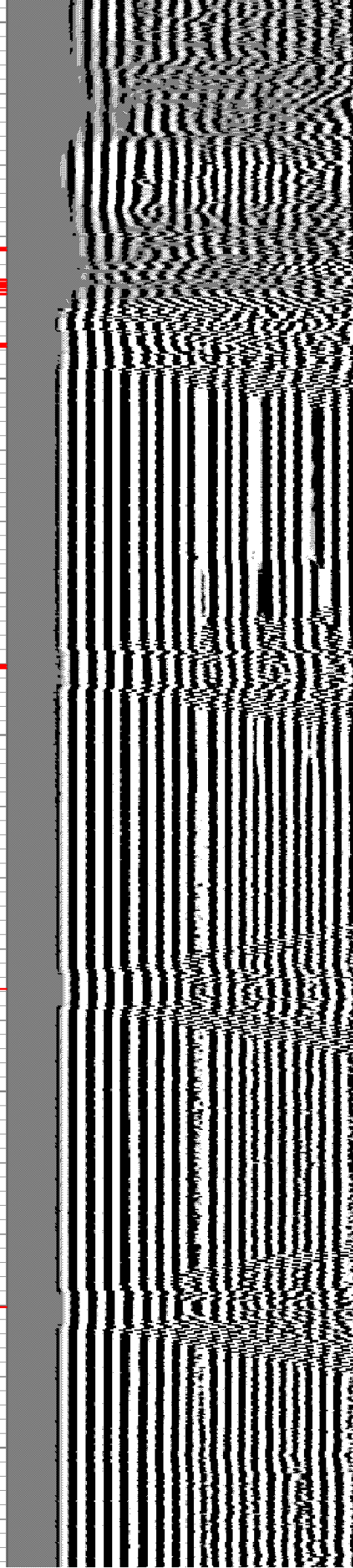
1600

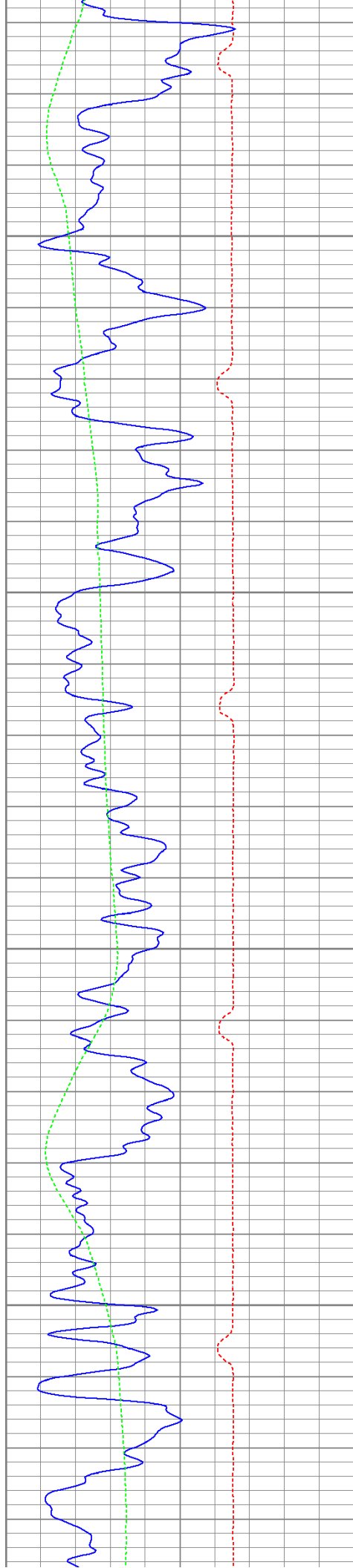
1650

1700



ECP →



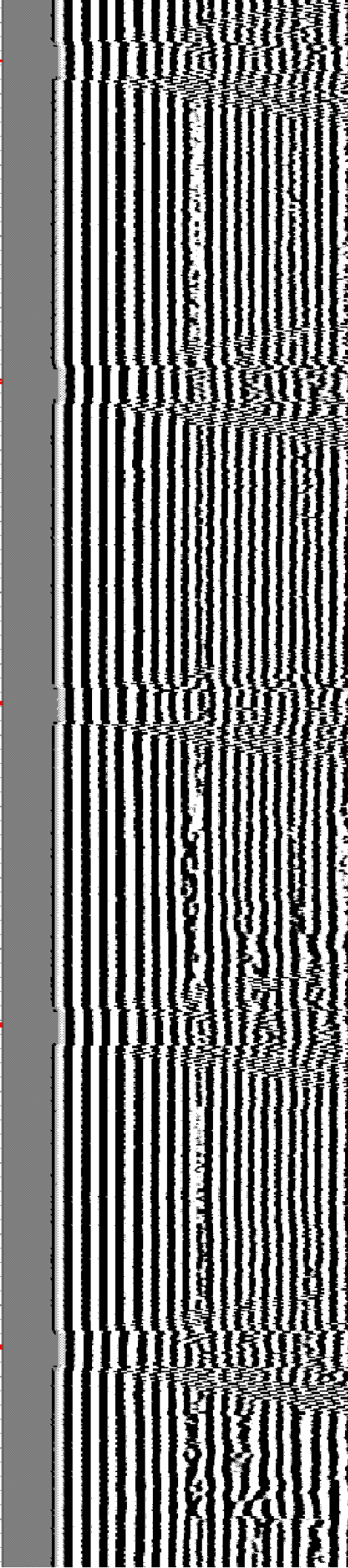


1750

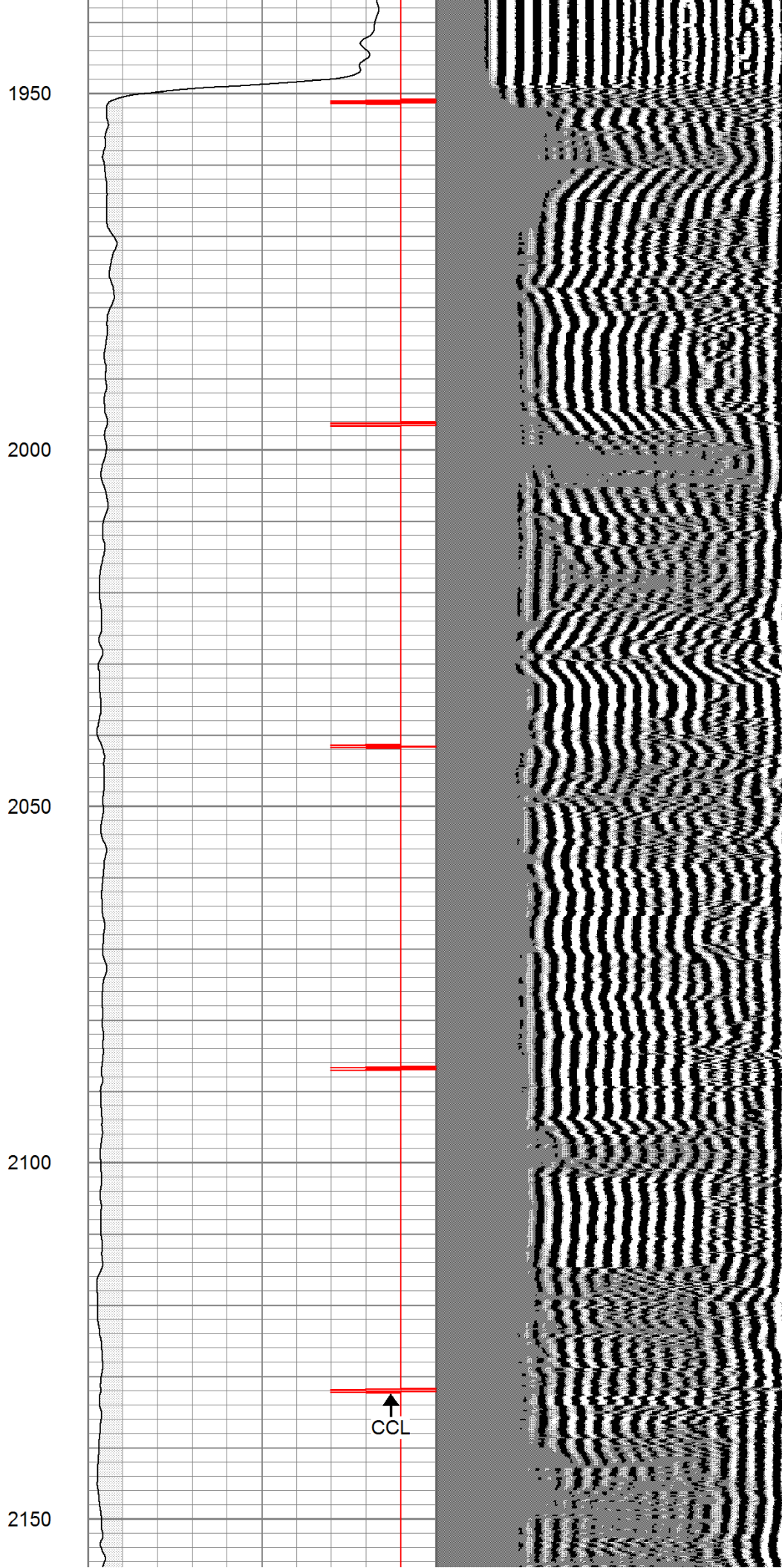
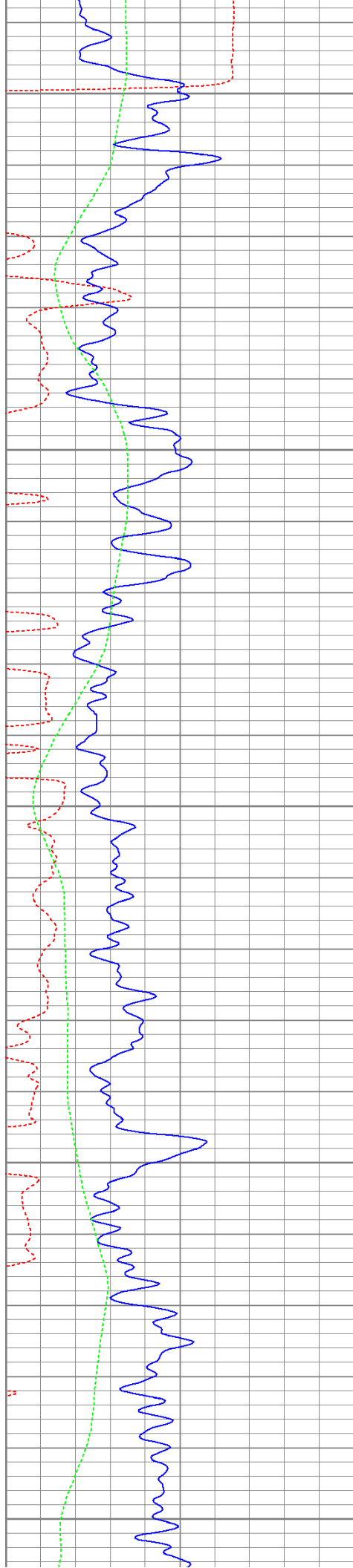
1800

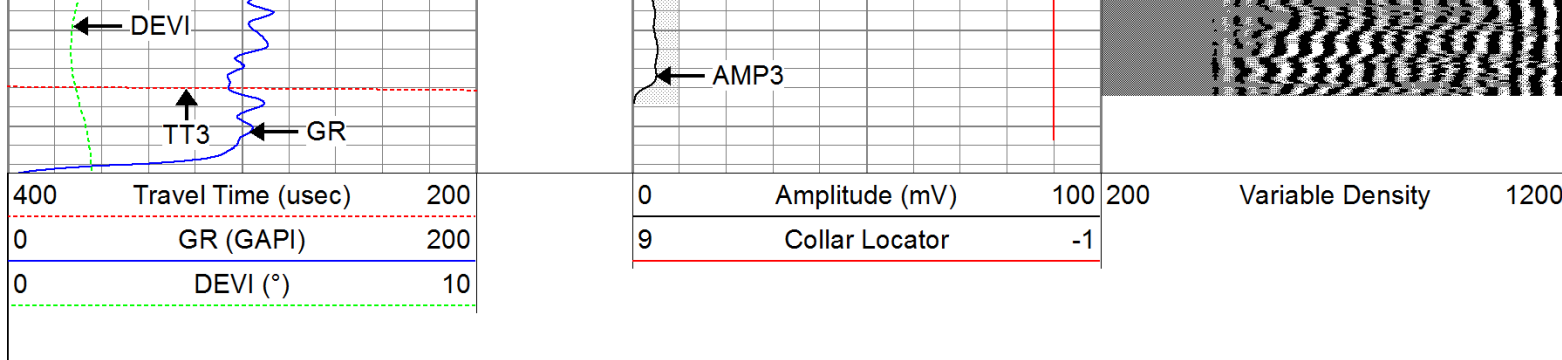
1850

1900



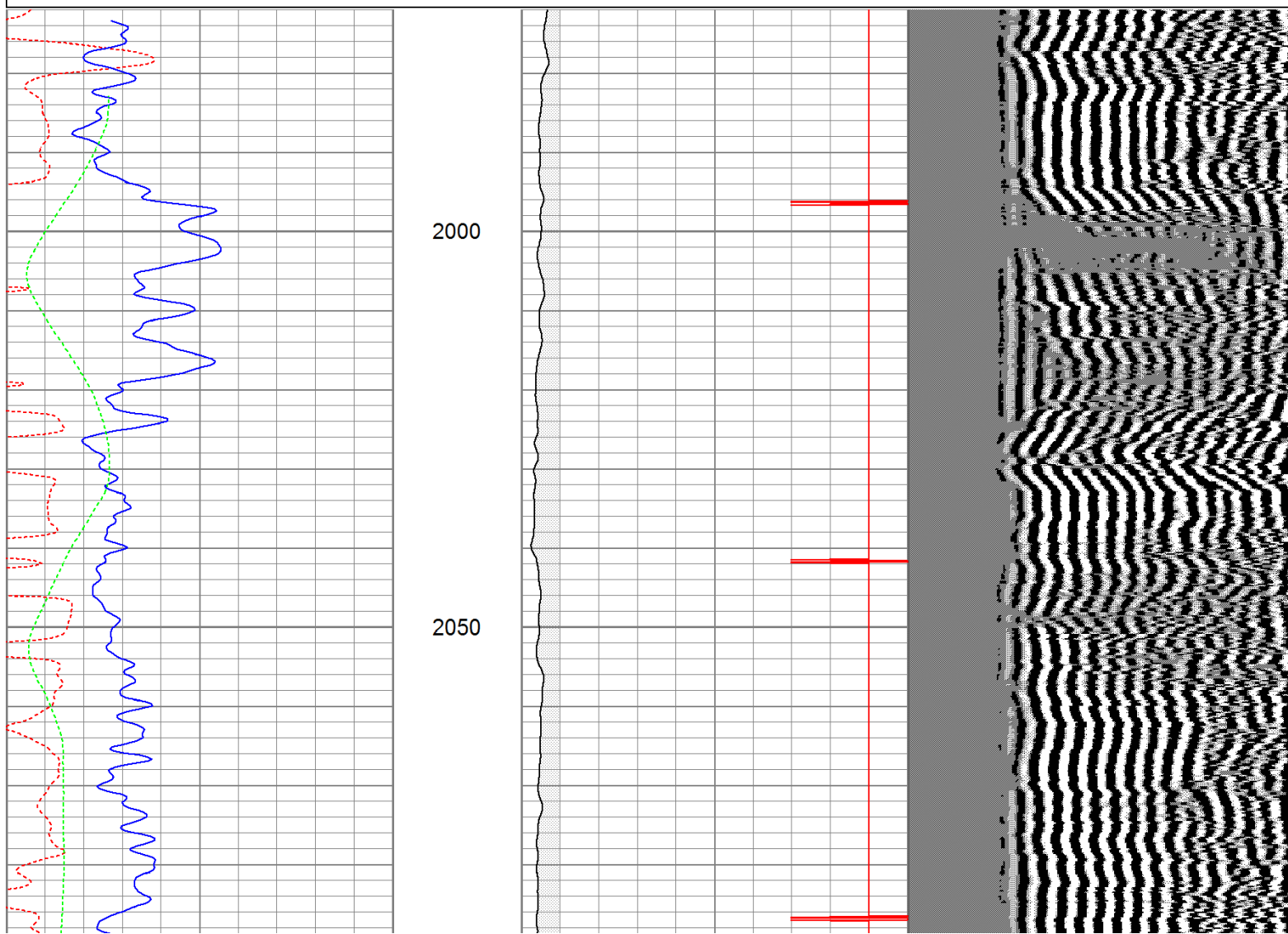
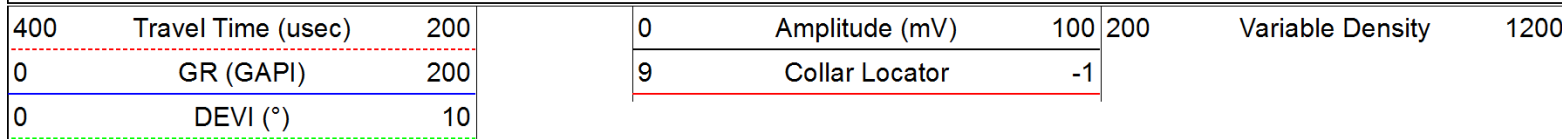




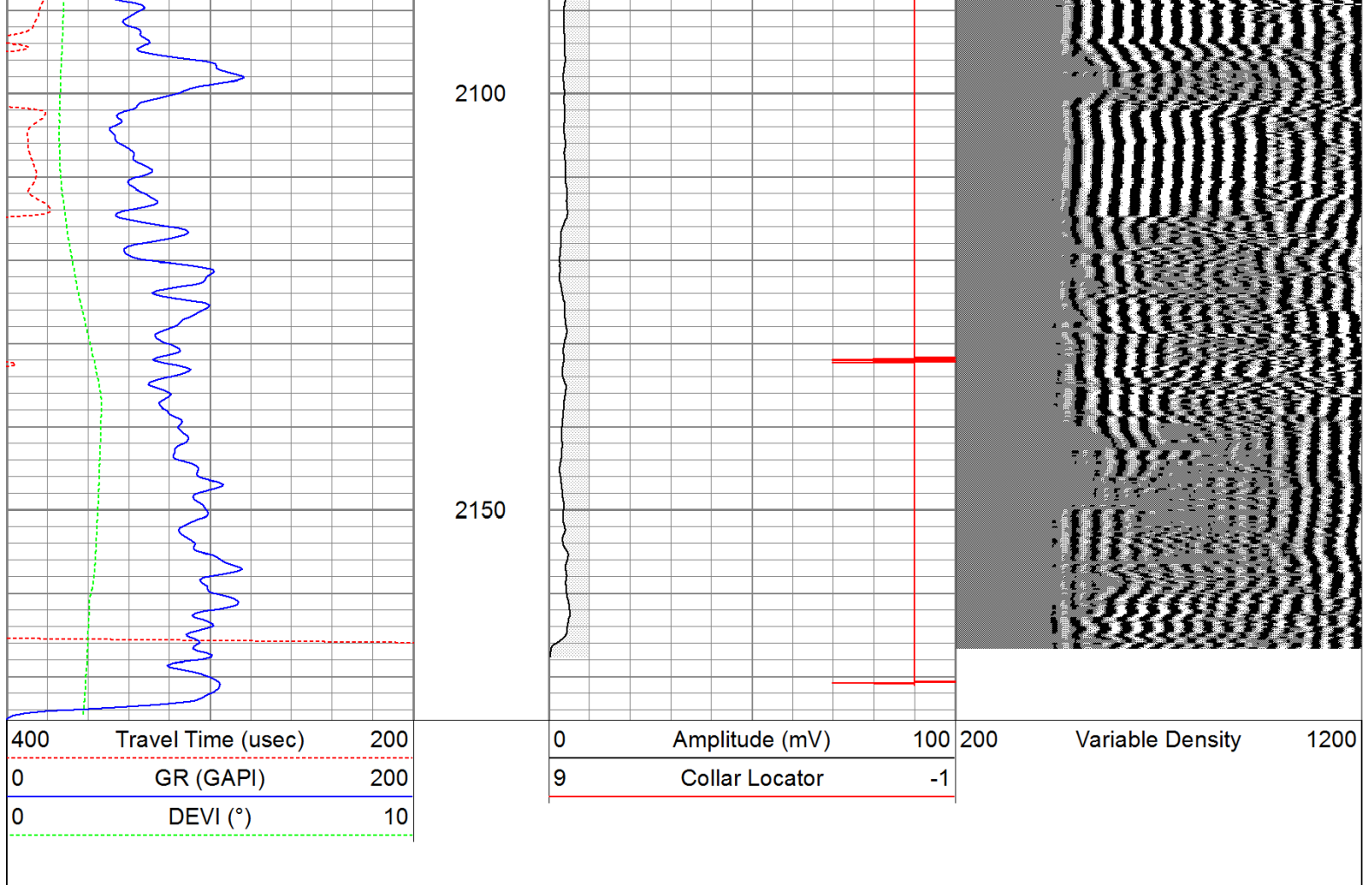


# Repeat Pass

Database File: ac20-0371211b.db  
 Dataset Pathname: pass1  
 Presentation Format: cbldig  
 Dataset Creation: Tue Jul 12 12:58:44 2011 by Log Open-Cased 110302  
 Charted by: Depth in Feet scaled 1:240







Calibration Report					
Database File:	ac20-0371211b.db				
Dataset Pathname:	pass1				
Dataset Creation:	Tue Jul 12 12:58:44 2011 by Log Open-Cased 110302				
Gamma Ray Calibration Report					
Serial Number:	080616				
Tool Model:	275D_INC				
Performed:	Wed May 04 17:31:09 2011				
Calibrator Value:	200.0	GAPI			
Background Reading:	50.0	cps			
Calibrator Reading:	250.0	cps			
Sensitivity:	1.0000	GAPI/cps			
Inclinometer Calibration Report					
Performed:	Wed May 04 17:39:54 2011				
	Low Read.	High Read.	Low Ref.	High Ref.	
X Accelerometer	-3585.20	3595.40	-1.00	1.00	gee
Y Accelerometer	-3619.40	3520.00	-1.00	1.00	gee
Z Accelerometer					
Cement Bond Log Calibration Report					

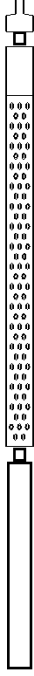
Serial Number: 081024  
 Tool Model: PROBEDIGITALCBL  
 Performed: Sat Jul 09 20:17:28 2011

Depth: 79.0748 ft  
 Casing Diameter: 5.5 in

3' Spacing 5' Spacing

Signal Zero: 0 mV  
 Calibrated Amplitude: 85 mV  
 Reading at Signal Zero: -0.0115234 V  
 Reading in Free Pipe: 1.793 V

Gain: 47.1039 70.842  
 Offset: 0.542797 0.778293

Sensor	Offset (ft)	Schematic	Description	Len (ft)	OD (in)	Wt (lb)
WVF3	9.04		None	0.75	1.50	5.00
			Star	0.29	1.50	0.50
WVF5	8.04		CBL-PROBEDIGITALCBL (081024) PROBE DIGITAL CBL	8.75	2.75	106.50
CCL	3.50		Star	0.29	1.50	0.50
ACCX	1.83		GR-275D_INC (080616) 2-3/4" GR-CCL with Inclination	4.50	2.75	50.00
ACCY	1.83					
ACCZ	1.83					
GR	0.83					

Dataset: ac20-0371211b.db: field/well/run1/pass1  
 Total Length: 14.58 ft  
 Total Weight: 162.50 lb  
 O.D. 2.75 in