
XTO ENERGY INC EBUSINESS

Apache Canyon 20-03

Las Animas County , Colorado

Cement Multiple Stages
29-Jun-2011

Job Site Documents

The Road to Excellence Starts with Safety

Sold To #: 353810	Ship To #: 2862067	Quote #:	Sales Order #: 8273934
Customer: XTO ENERGY INC EBUSINESS	Customer Rep:		
Well Name: Apache Canyon	Well #: 20-03	API/UWI #:	
Field:	City (SAP): TRINIDAD	County/Parish: Las Animas	State: Colorado
Contractor: ??	Rig/Platform Name/Num: ??		
Job Purpose: Cement Multiple Stages			
Well Type: Development Well	Job Type: Cement Multiple Stages		
Sales Person: FLING, MATTHEW	Srvc Supervisor: SIPNEFSKI, ROBERT	MBU ID Emp #:	419391

Job Personnel

HES Emp Name	Exp Hrs	Emp #	HES Emp Name	Exp Hrs	Emp #	HES Emp Name	Exp Hrs	Emp #
BALDWIN, DUSTIN Anthony	4	492232	HALE, ROBERT E	4	470588	LINEBARGER, JOSHUA W	4	419614
MAHONEY, KELLAN Carl	4	476531	SIPNEFSKI, ROBERT Anthony	4	419391	SNYDER, JONATHAN Leroy	4	435616

Equipment

HES Unit #	Distance-1 way	HES Unit #	Distance-1 way	HES Unit #	Distance-1 way	HES Unit #	Distance-1 way
10824253C	47 mile	10857012C	47 mile	11019824C	47 mile	11515861C	47 mile
11562570C	47 mile	11566182	47 mile				

Job Hours

Date	On Location Hours	Operating Hours	Date	On Location Hours	Operating Hours	Date	On Location Hours	Operating Hours
6/29/11	4	2						

TOTAL	Total is the sum of each column separately							
-------	--	--	--	--	--	--	--	--

Job

Formation Name	Top	Bottom	Called Out	Date	Time	Time Zone
Formation Depth (MD)			On Location	28 - Jun - 2011	19:00	MST
Form Type	BHST		Job Started	28 - Jun - 2011	21:00	MST
Job depth MD	2549. ft	Job Depth TVD	Job Completed	28 - Jun - 2011	22:59	MST
Water Depth		Wk Ht Above Floor	Departed Loc	29 - Jun - 2011	01:07	MST
Perforation Depth (MD)	From	To		29 - Jun - 2011	02:00	MST

Well Data

Description	New / Used	Max pressure psig	Size in	ID in	Weight lbm/ft	Thread	Grade	Top MD ft	Bottom MD ft	Top TVD ft	Bottom TVD ft
13 3/8" Openhole				7.875				813.	2545.		
Multiple Stage Cementer	Unknown							.	1808.		
5 1/2" Production Casing	Unknown		5.5	4.95	15.5		J-55	.	2543.		
8 5/8" Surface Casing	Unknown		8.625	8.097	24.		J-55	.	813.		

Tools and Accessories

Type	Size	Qty	Make	Depth	Type	Size	Qty	Make	Depth	Type	Size	Qty	Make
Guide Shoe					Packer					Top Plug			
Float Shoe					Bridge Plug					Bottom Plug			
Float Collar					Retainer					SSR plug set			
Insert Float										Plug Container			
Stage Tool										Centralizers			

Miscellaneous Materials

Gelling Agt	Conc	Surfactant	Conc	Acid Type	Qty	Conc	%
Treatment Fld	Conc	Inhibitor	Conc	Sand Type	Size	Qty	

Fluid Data

Stage/Plug #: 1

Fluid #	Stage Type	Fluid Name	Qty	Qty uom	Mixing Density lbm/gal	Yield ft ³ /sk	Mix Fluid Gal/sk	Rate bbl/min	Total Mix Fluid Gal/sk
1	FRESH WATER			bbl	8.33	.0	.0	.0	
2	GELLED WATER			bbl	8.33	.0	.0	.0	
0.2 gal/Mgal		LGC-VI UC, BULK (101582755)							
3	TUNED LIGHT TRINIDAD B3	TUNED LIGHT (TM) SYSTEM (452984)		sacks	10.	2.3	8.37		8.37
8.37 Gal		FRESH WATER							
4	DISPLACEMENT			bbl	8.33	.0	.0	.0	
Stage/Plug #: 2									
Fluid #	Stage Type	Fluid Name	Qty	Qty uom	Mixing Density uom	Yield uom	Mix Fluid uom	Rate uom	Total Mix Fluid uom
1	FRESH WATER			bbl	8.33	.0	.0	.0	
2	GELLED WATER			bbl	8.33	.0	.0	.0	
0.2 gal/Mgal		LGC-VI UC, BULK (101582755)							
3	TUNED LIGHT TRINIDAD B3	TUNED LIGHT (TM) SYSTEM (452984)		sacks	10.	2.3	8.37		8.37
8.37 Gal		FRESH WATER							
4	DISPLACEMENT			bbl	8.33	.0	.0	.0	
Calculated Values		Pressures		Volumes					
Displacement		Shut In: Instant		Lost Returns		Cement Slurry		Pad	
Top Of Cement		5 Min		Cement Returns 36bbl		Actual Displacement		Treatment	
Frac Gradient		15 Min		Spacers		Load and Breakdown		Total Job	
Rates									
Circulating		Mixing		Displacement		Avg. Job			
Cement Left In Pipe		Amount	47 ft	Reason	Shoe Joint				
Frac Ring # 1 @	ID	Frac ring # 2 @	ID	Frac Ring # 3 @	ID	Frac Ring # 4 @	ID		
The Information Stated Herein Is Correct				Customer Representative Signature					

The Road to Excellence Starts with Safety

Sold To #: 353810	Ship To #: 2862067	Quote #:	Sales Order #: 8273934
Customer: XTO ENERGY INC EBUSINESS		Customer Rep:	
Well Name: Apache Canyon	Well #: 20-03	API/UWI #:	
Field:	City (SAP): TRINIDAD	County/Parish: Las Animas	State: Colorado
Legal Description:			
Lat:		Long:	
Contractor: ??		Rig/Platform Name/Num: ??	
Job Purpose: Cement Multiple Stages		Ticket Amount:	
Well Type: Development Well		Job Type: Cement Multiple Stages	
Sales Person: FLING, MATTHEW		Srv Supervisor: SIPNEFSKI, ROBERT MBU ID Emp #: 419391	

Activity Description	Date/Time	Cht #	Rate bbl/min	Volume bbl		Pressure psig		Comments
				Stage	Total	Tubing	Casing	
Arrive at Location from Service Center	06/28/2011 21:00							
Assessment Of Location Safety Meeting	06/28/2011 21:15							
Start Job	06/28/2011 22:59							
Pump Spacer 1	06/28/2011 23:03		3	30				Water and Gel mixed with Polyflake.
Pump Spacer 2	06/28/2011 23:14		3	10				Water supplied by rig.
Pump Cement	06/28/2011 23:17		3	45				Mix and Pump 110 sks of tuned light cmt @ 10.0 #/gal mixed with H2O supplied by rig.
Shutdown	06/28/2011 23:27							
Clean Lines	06/28/2011 23:27							
Drop Top Plug	06/28/2011 23:33							Slow down From 30 bbl to 51 bbl going thru MSC tool
Pump Displacement	06/28/2011 23:34		4	51				Displace with H2O supplied by rig.
Bump Plug	06/28/2011 23:47							
Drop Opening Device For Multiple Stage Cementer	06/29/2011 00:01							
Open Multiple Stage Cementer	06/29/2011 00:01						1801.0	
Pump Spacer 1	06/29/2011 00:10		3	30				Water and Gel mixed with Polyflake.
Pump Spacer 2	06/29/2011 00:27		3	10				Water supplied by rig.
Activity Description	Date/Time	Cht	Rate bbl/min	Volume bbl		Pressure psig		Comments

Sold To #: 353810

Ship To #: 2862067

Quote #:

Sales Order #:

8273934

Cementing Job Log

		#		Stage	Total	Tubing	Casing	
Pump Cement	06/29/2011 00:29		3	84				Mix and Pump 205 sks of tuned light cmt @ 10.0 #/gal mixed with H2O supplied by rig.
Drop Top Plug	06/29/2011 00:49							
Pump Displacement	06/29/2011 00:49		4	37				Displace with H2O supplied by rig.
Close Multiple Stage Cementer	06/29/2011 01:03						2291. 0	
Release Casing Pressure	06/29/2011 01:06							
Check Floats	06/29/2011 01:06							Check Floats, Floats Held.
End Job	06/29/2011 01:07							36 bbl or Cmt back to pit.

Sold To # : 353810

Ship To # : 2862067

Quote # :

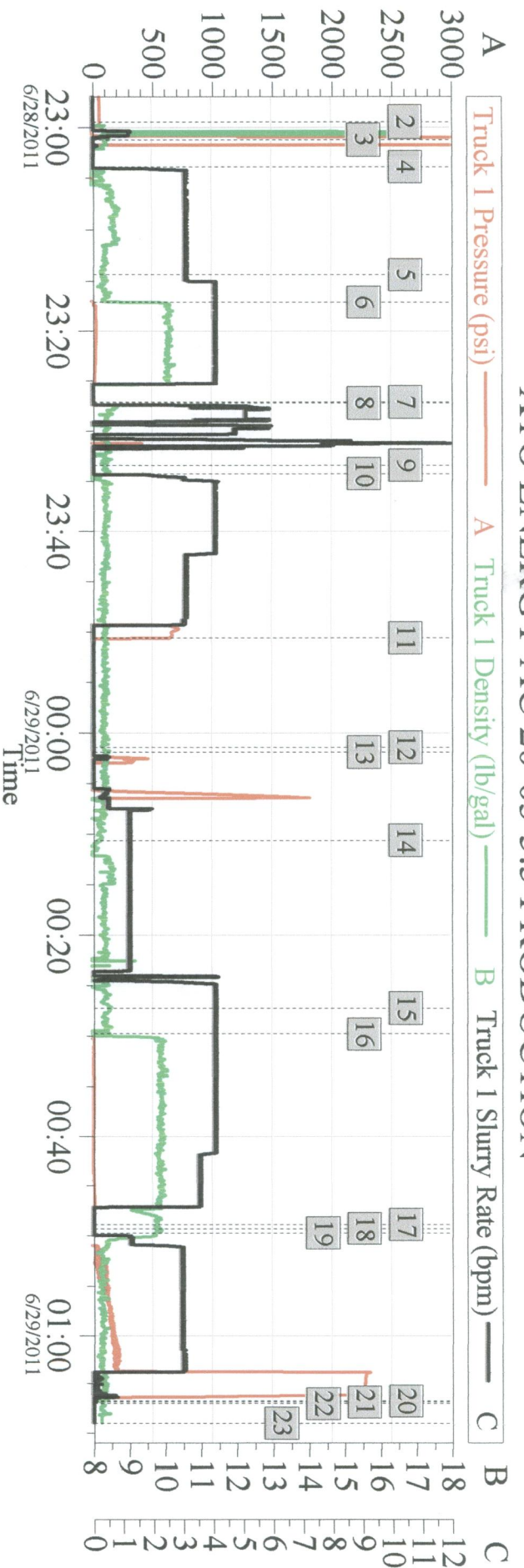
Sales Order # :

8273934

CLUBMATE Version 7.00.100

Wednesday, June 29, 2011 01:00:00

XTO ENERGY AC 20-03 5.5 PRODUCTION



Global Event Log

2	Start Job	6/28/2011 22:59:29	3	Test Lines	6/28/2011 23:01:12
4	Pump Spacer 1	6/28/2011 23:03:52	5	Pump Spacer 2	6/28/2011 23:14:18
6	Pump Cement	6/28/2011 23:17:05	7	Shutdown	6/28/2011 23:27:07
8	Clean Lines	6/28/2011 23:27:12	9	Drop Top Plug	6/28/2011 23:33:25
10	Pump Displacement	6/28/2011 23:34:14	11	Shutdown	6/28/2011 23:50:35
12	Drop Ball	6/29/2011 00:01:24	13	Open Multiple Stage Cementer	6/29/2011 00:01:53
14	Pump Spacer 1	6/29/2011 00:10:36	15	Pump Spacer 2	6/29/2011 00:27:11
16	Pump Cement	6/29/2011 00:29:44	17	Shutdown	6/29/2011 00:48:52
18	Drop Top Plug	6/29/2011 00:49:16	19	Pump Displacement	6/29/2011 00:49:42
20	Other	6/29/2011 01:06:46	21	Other	6/29/2011 01:06:51
22	End Job	6/29/2011 01:07:01	23	Ending Job	6/29/2011 01:09:01

Customer:
Well Description:

Job Date: 28-Jun-2011
UWI:

Sales Order #: 8273934