

HALLIBURTON

XTO ENERGY INC EBUSINESS

Apache Canyon 20-03

Las Animas County , Colorado

Cement Conductor Casing

26-Jun-2011

Job Site Documents

The Road to Excellence Starts with Safety

Sold To #: 353810	Ship To #: 2862067	Quote #:	Sales Order #: 8273936
Customer: XTO ENERGY INC EBUSINESS		Customer Rep:	
Well Name: Apache Canyon	Well #: 20-03	API/UWI #:	
Field:	City (SAP): TRINIDAD	County/Parish: Las Animas	State: Colorado
Contractor: Pense Drilling		Rig/Platform Name/Num: 19	
Job Purpose: Cement Conductor Casing			
Well Type: Development Well		Job Type: Cement Conductor Casing	
Sales Person: THEIS, MATTHEW	Srvc Supervisor: SIPNEFSKI, ROBERT	MBU ID Emp #: 419391	

Job Personnel

HES Emp Name	Exp Hrs	Emp #	HES Emp Name	Exp Hrs	Emp #	HES Emp Name	Exp Hrs	Emp #
CONGDON, RICHARD S.	3.5	320306	HALE, ROBERT E	3.5	470588	SIPNEFSKI, ROBERT Anthony	3.5	419391
SNYDER, JONATHAN Leroy	3.5	435616						

Equipment

HES Unit #	Distance-1 way	HES Unit #	Distance-1 way	HES Unit #	Distance-1 way	HES Unit #	Distance-1 way

Job Hours

Date	On Location Hours	Operating Hours	Date	On Location Hours	Operating Hours	Date	On Location Hours	Operating Hours
6-26-11	3.5	1.5						

TOTAL Total is the sum of each column separately

Job

Job Times

Formation Name	Date	Time	Time Zone
Formation Depth (MD) Top Bottom	Called Out	26 - Jun - 2011	18:00 MST
Form Type BHST	On Location	26 - Jun - 2011	18:30 MST
Job depth MD 450. ft Job Depth TVD 450. ft	Job Started	26 - Jun - 2011	19:34 MST
Water Depth Wk Ht Above Floor	Job Completed	26 - Jun - 2011	21:05 MST
Perforation Depth (MD) From To	Departed Loc	26 - Jun - 2011	22:00 MST

Well Data

Description	New / Used	Max pressure psig	Size in	ID in	Weight lbm/ft	Thread	Grade	Top MD ft	Bottom MD ft	Top TVD ft	Bottom TVD ft
17 1/2" Openhole				11.					43.		
13 3/8" Conductor Casing	Unknown		13.375	12.715	48.				43.		

Tools and Accessories

Type	Size	Qty	Make	Depth	Type	Size	Qty	Make	Depth	Type	Size	Qty	Make
Guide Shoe					Packer					Top Plug			
Float Shoe					Bridge Plug					Bottom Plug			
Float Collar					Retainer					SSR plug set			
Insert Float										Plug Container			
Stage Tool										Centralizers			

Miscellaneous Materials

Gelling Agt	Conc	Surfactant	Conc	Acid Type	Qty	Conc	%
Treatment Fld	Conc	Inhibitor	Conc	Sand Type	Size	Qty	

Fluid Data

Stage/Plug #: 1									
Fluid #	Stage Type	Fluid Name	Qty	Qty uom	Mixing Density lbm/gal	Yield ft3/sk	Mix Fluid Gal/sk	Rate bbl/min	Total Mix Fluid Gal/sk

Stage/Plug #: 1

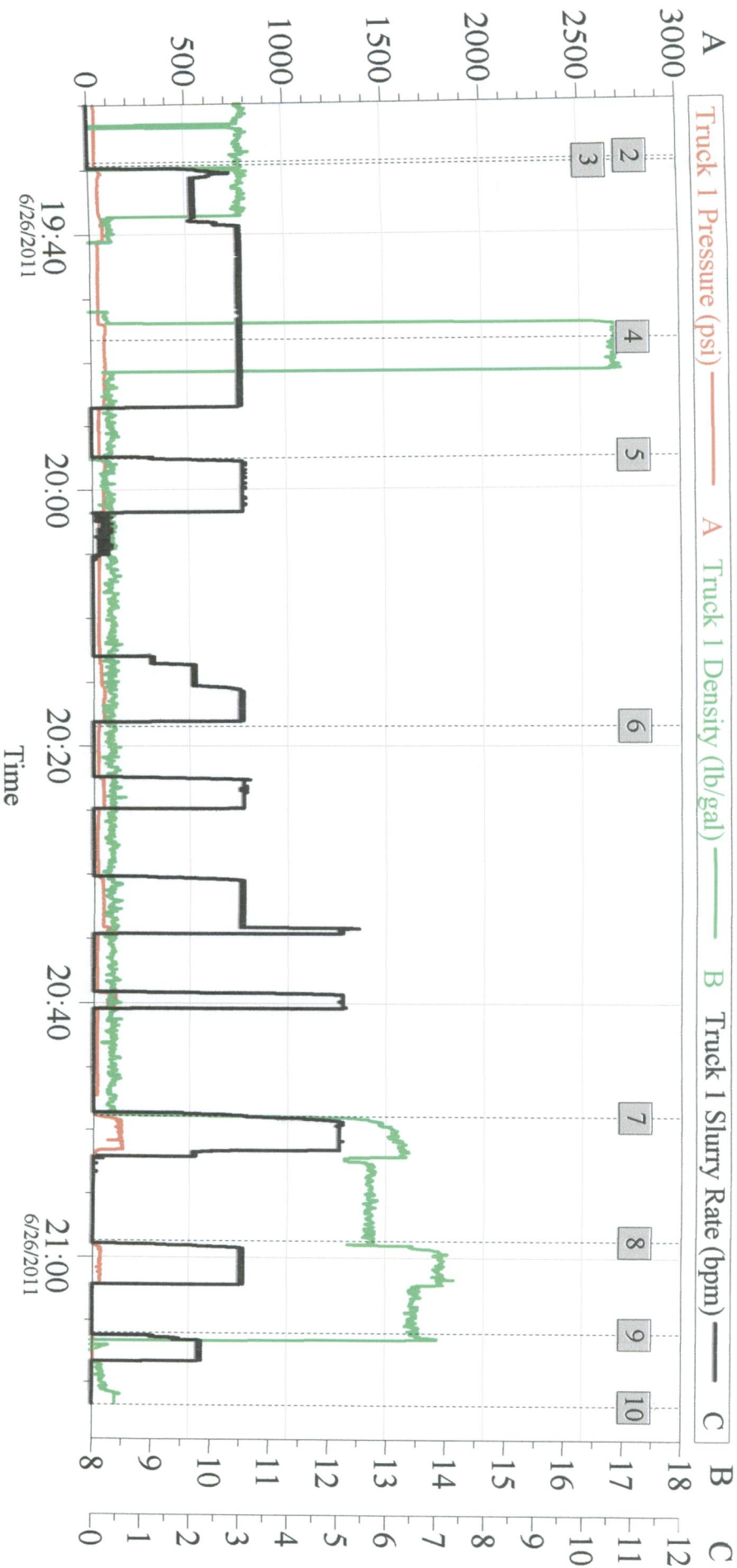
Stage/Plug #: 1									
Fluid #	Stage Type	Fluid Name	Qty	Qty uom	Mixing Density lbm/gal	Yield ft ³ /sk	Mix Fluid Gal/sk	Rate bbl/min	Total Mix Fluid Gal/sk
1	FRESH WATER	WITH GEL AND POLYFLAKE	33	bbl	8.33	.0	.0	.0	
2	Trinidad Surface Blend	TRINIDAD SURFACE BLEND - SBM (137081)	75	sacks	14.	1.66	7.76	4.0	7.76
	0.125 lbm	POLY-E-FLAKE (101216940)							
	2 %	CAL-SEAL 60, 50 LB BAG (101217146)							
	2 %	ECONOLITE (100001580)							
	5 lbm	GILSONITE, 50 LB BAG (100001618)							
	0.2 %	VERSASET, 55 LB SK (101376573)							
	6 %	SALT, 100 LB BAG (100003652)							
	7.76 Gal	FRESH WATER							
3	DISPLACEMENT		4	bbl	8.33	.0	.0	.0	
Calculated Values		Pressures		Volumes					
Displacement	7	Shut In: Instant		Lost Returns		Cement Slurry	24	Pad	
Top Of Cement		5 Min		Cement Returns	13	Actual Displacement	4	Treatment	
Frac Gradient		15 Min		Spacers	85	Load and Breakdown		Total Job	
Rates									
Circulating		Mixing	4	Displacement	2	Avg. Job	3		
Cement Left In Pipe	Amount	0 ft	Reason	Shoe Joint					
Frac Ring # 1 @	ID	Frac ring # 2 @	ID	Frac Ring # 3 @	ID	Frac Ring # 4 @	ID		
The Information Stated Herein Is Correct				Customer Representative Signature					

The Road to Excellence Starts with Safety

Sold To #: 353810	Ship To #: 2862067	Quote #:	Sales Order #: 8273936
Customer: XTO ENERGY INC EBUSINESS		Customer Rep:	
Well Name: Apache Canyon	Well #: 20-03	API/UWI #:	
Field:	City (SAP): TRINIDAD	County/Parish: Las Animas	State: Colorado
Legal Description:			
Lat:		Long:	
Contractor: Pense Drilling		Rig/Platform Name/Num: 19	
Job Purpose: Cement Conductor Casing		Ticket Amount:	
Well Type: Development Well		Job Type: Cement Conductor Casing	
Sales Person: THEIS, MATTHEW		Srv Supervisor: SIPNEFSKI, ROBERT MBU ID Emp #: 419391	

Activity Description	Date/Time	Cht #	Rate bbl/ min	Volume bbl		Pressure psig		Comments
				Stage	Total	Tubing	Casing	
Start Job	06/26/2011 19:34							
Pump Spacer 1	06/26/2011 19:34		3	52		60.0		WATER
Pump Spacer 2	06/26/2011 19:57		3	33		59.0		GEL WATER WITH 50# POLYFLAKE
Pump Lead Cement	06/26/2011 20:48		5	15		74.0		45 SACKS 13.5PPG SURFACE CEMENT
Pump Tail Cement	06/26/2011 20:58		3	9		58.0		30 SACKS 14PPG SURFACE CEMENT
Shutdown	06/26/2011 21:02							WATCH FOR FALL BACK
Pump Displacement	06/26/2011 21:05		2	4		46.0		WATER TO DISPLACE
End Job	06/26/2011 21:10							13 BBL CEMENT RETURNED TO PIT

XTO ENERGY CONDUCTOR AC 20-03



Global Event Log

Intersection				Intersection					
		TIP	TID			TIP	TID		
2	Start Job	19:34:22	43.30	10.56	3	Pump Spacer 1	19:34:41	43.75	10.61
4	Pump Spacer 2	19:48:12	78.75	16.96	5	Pump Spacer 1	19:57:31	49.59	7.701
6	Pump Spacer 2	20:18:28	38.89	8.312	7	13.5PPG SURFACE CEMENT	20:48:50	25.28	9.759
8	14PPG SURFSACE CEMENT	20:58:40	2.917	12.80	9	Pump Displacement	21:05:59	0.000	13.45
10	Ending Job	21:11:48	-13.61	8.416					

Customer:
Well Description:

Job Date: 26-Jun-2011
UWI:

Sales Order #: 8273936