



CEMENT BOND LOG

Mesa Wireline

Company ENCANA OIL & GAS (USA) INC.
Well EAST RINN 24-15
Field WATTENBURG
County WELD
State COLORADO

Company ENCANA OIL & GAS (USA) INC.
Well EAST RINN 24-15
Field WATTENBURG
County WELD State COLORADO

Location: API #: 05123324680000
SHL: 2342' FSL & 2430' FWL NESW
BHL: 0510' FSL & 2130' FWL SESW
SEC: 15 TWP: 02N RGE: 68W
Permanent Datum GROUND LEVEL Elevation 4874'
Log Measured From KELLY BUSHING = 13 FT
Drilling Measured From KELLY BUSHING
Other Services
NONE
Elevation
K.B. 4887'
D.F. 4886'
G.L. 4874'

Date	15 MAR 2011		
Run Number	ONE		
Depth Driller	8385'		
Depth Logger	8344'		
Bottom Logged Interval	8342'		
Top Log Interval	3000' & 6500'		
Open Hole Size	7.875"		
Type Fluid	WATER		
Density / Viscosity	~8.34#		
Max. Recorded Temp.	N/A		
Estimated Cement Top	3211' & 6678'		
Time Well Ready	N/A		
Time Logger on Bottom	N/A		
Equipment Number	W0061 / RBT04		
Location	AULT, CO		
Recorded By	D. SOLIS		
Witnessed By	G. CUMMINGS		
Borehole Record			
Run Number	Bit	From	To
ONE	12.25"	SURFACE	850'
TWO	7.875"	80'	8365'
Tubing Record			
Casing Record	Size	Wgt/Ft	Top
Surface String	8.625"	24.0#	SURFACE
Prot. String			
Production String	4.5"	11.6#	SURFACE
Liner			8365'

<<< Fold Here >>>

All interpretations are opinions based on inferences from electrical or other measurements and we cannot and do not guarantee the accuracy or correctness of any interpretation, and we shall not, except in the case of gross or willful negligence on our part, be liable or responsible for any loss, costs, damages, or expenses incurred or sustained by anyone resulting from any interpretation made by any of our officers, agents or employees. These interpretations are also subject to our general terms and conditions set out in our current Price Schedule.

Comments

RBT-GR RAN IN COMBINATION.
CORRELATED TO PSI INDUCTION-DENSITY-NEUTRON LOG DATED: 22 JAN 2011.
LOG INTERVALS PER CUSTOMER REQUEST.
SHORT JOINT @: 7418' TO 7440'.
DV TOOL @: 5396'

WE APPRECIATE YOUR BUSINESS, MESA WIRELINE LLC, AULT, CO. (970) 834-2495



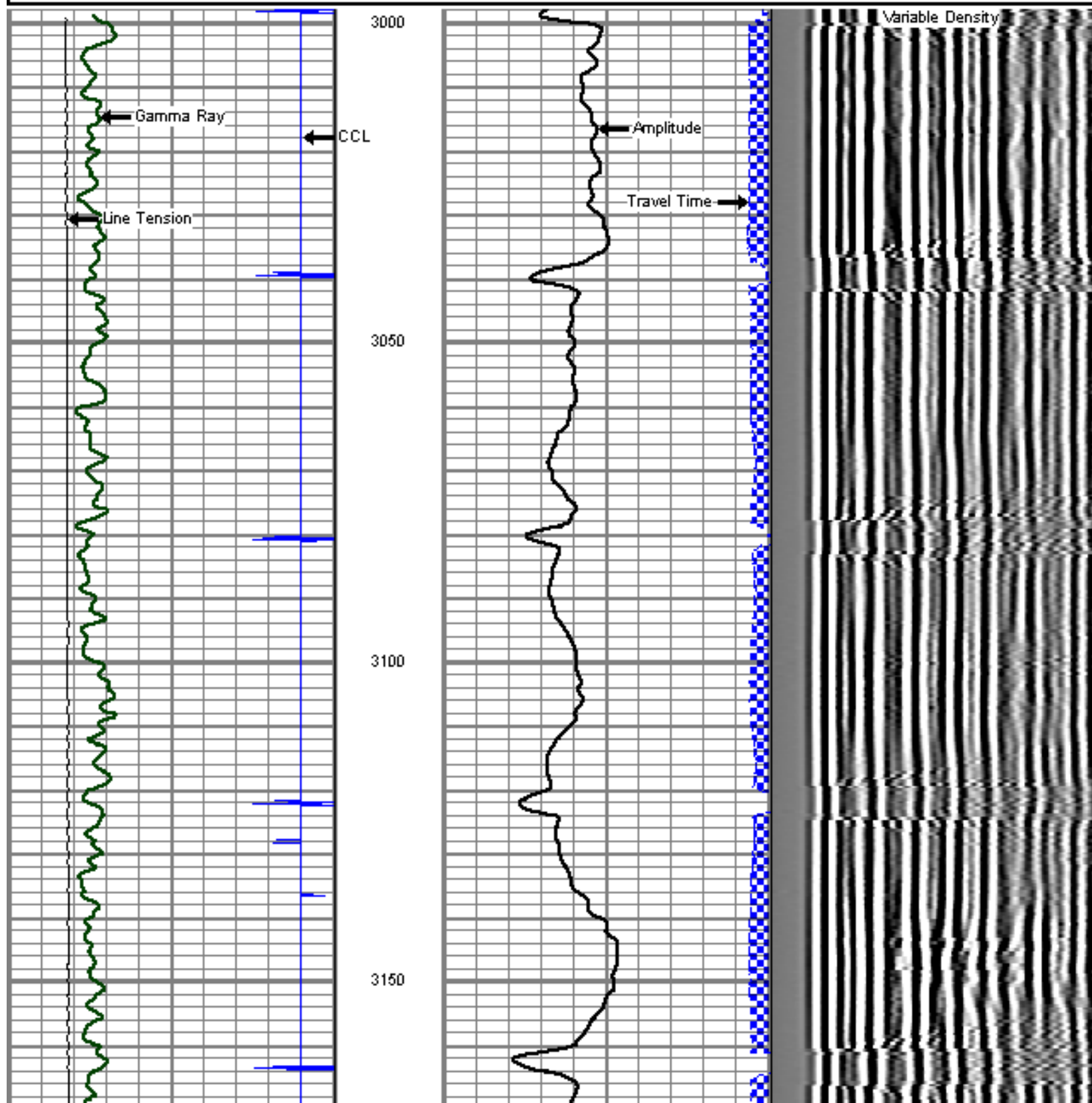
MAIN LOG SECTION

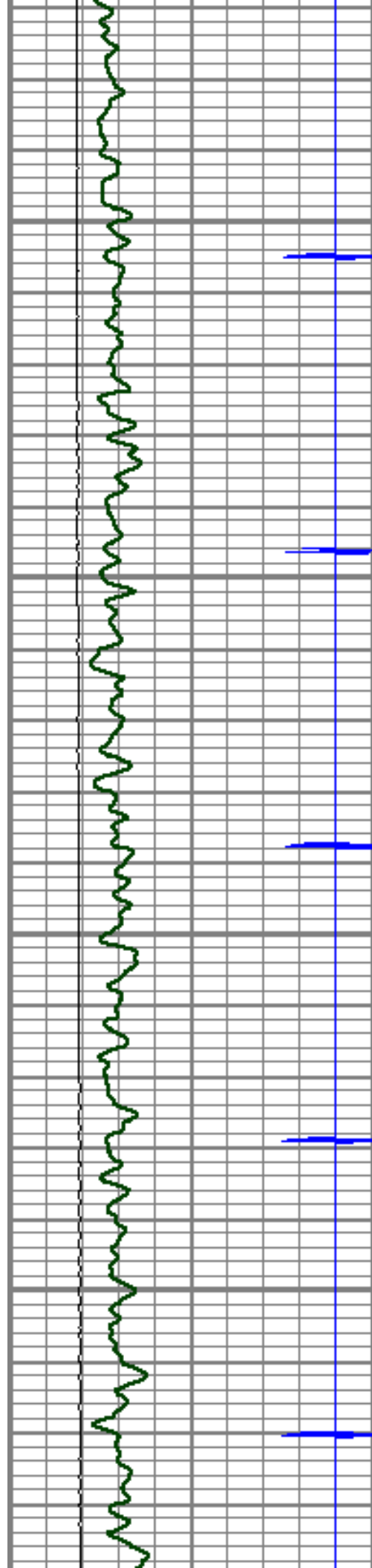
UPPER SECTION

Database File: east rinn 1.db
Dataset Pathname: pass10
Presentation Format: cb101son
Dataset Creation: Tue Mar 15 10:58:13 2011 by Log SCH 110223
Charted by: Depth in Feet scaled 1:240

9	Collar Locator	-1
0	Gamma Ray (GAPI)	300
0	LTEN (lb)	4000

0	Amplified Amplitude (mV)	10	200	Variable Density	1200
0	Amplitude (mV)	100			
0	Travel Time (usec)	200			



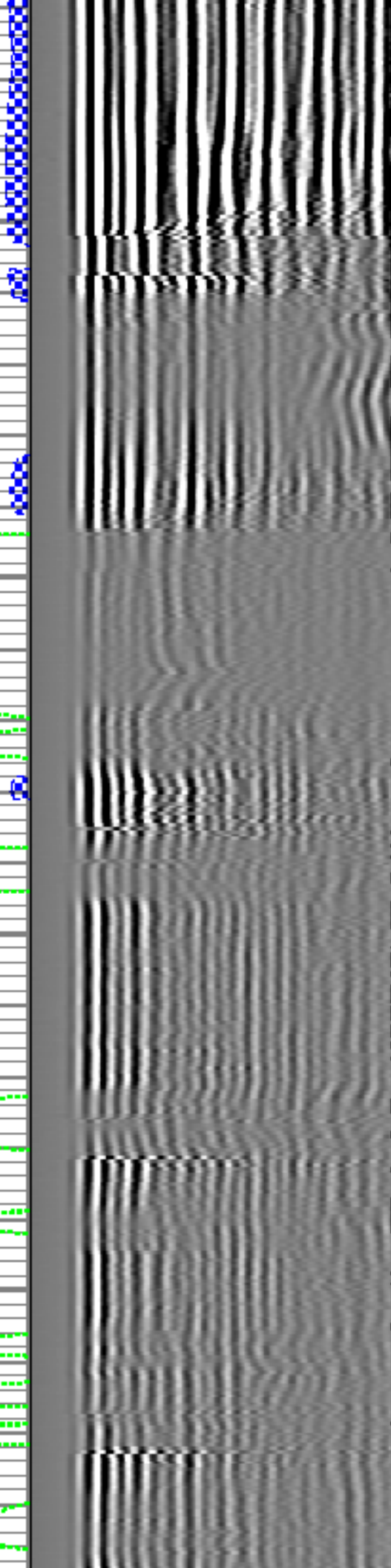
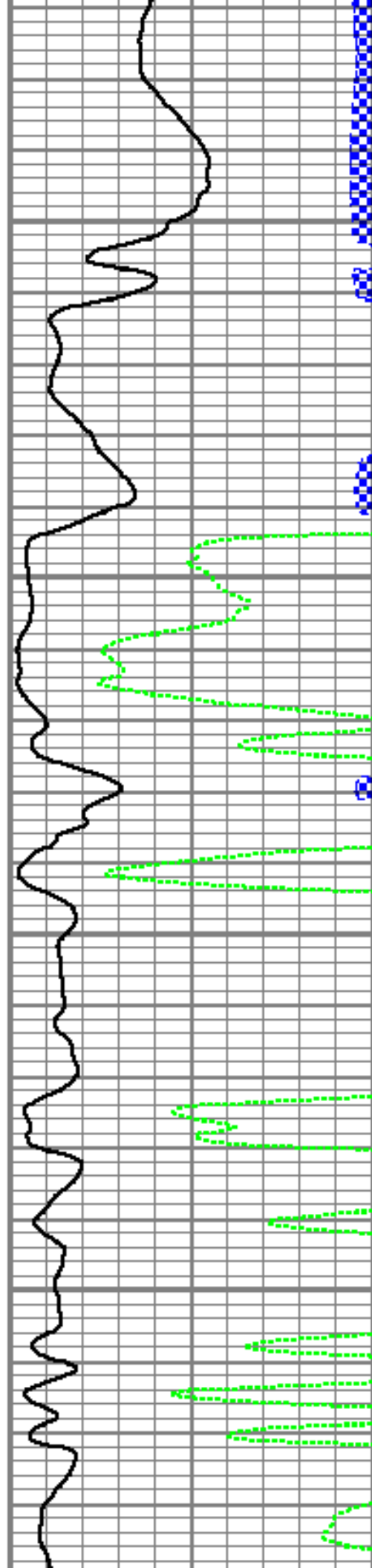


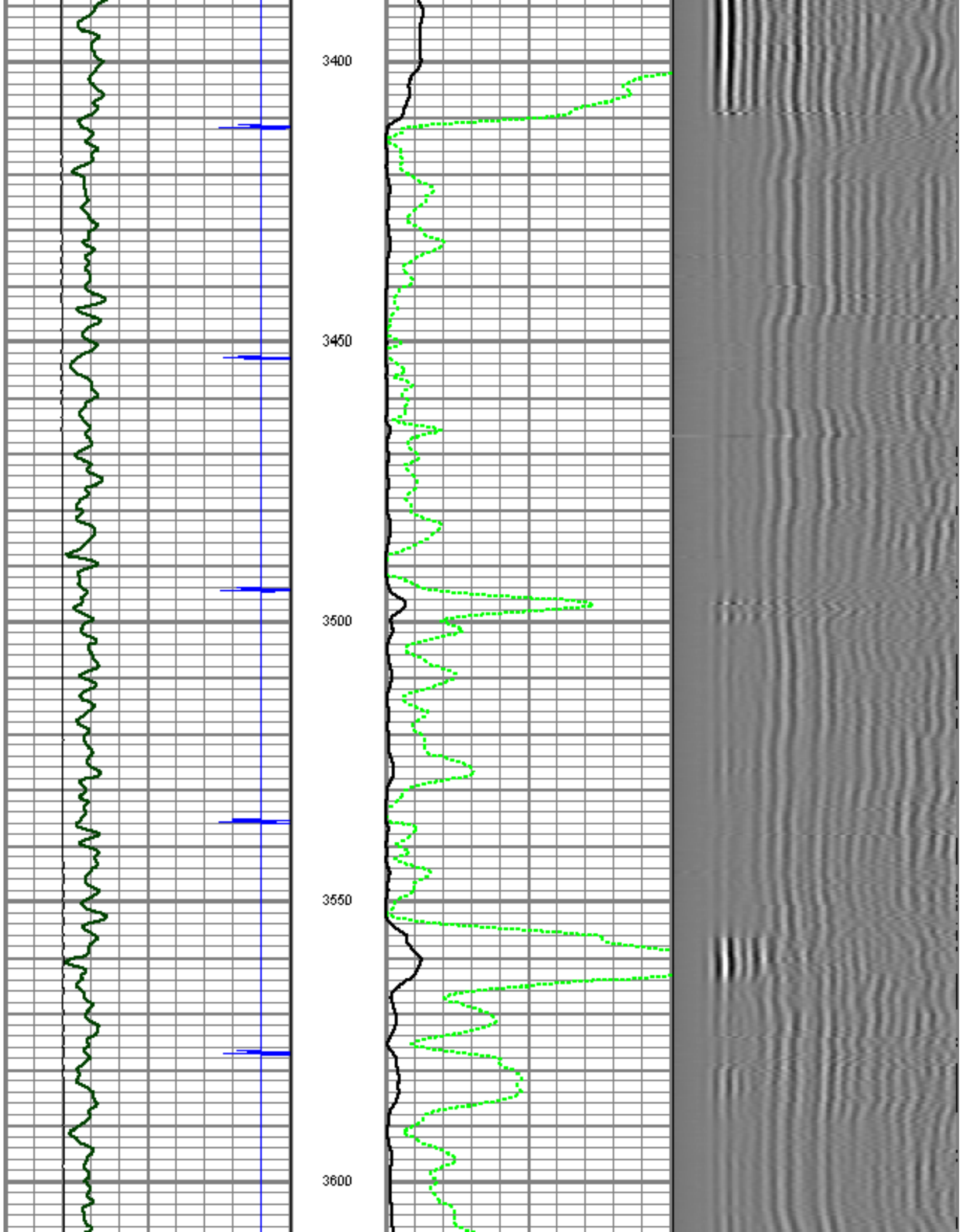
3200

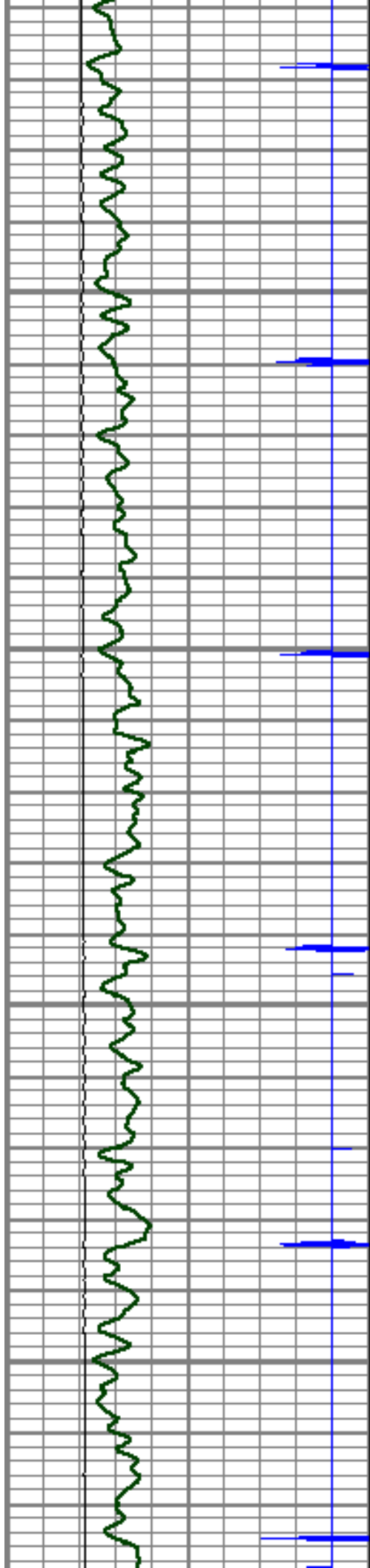
3250

3300

3350





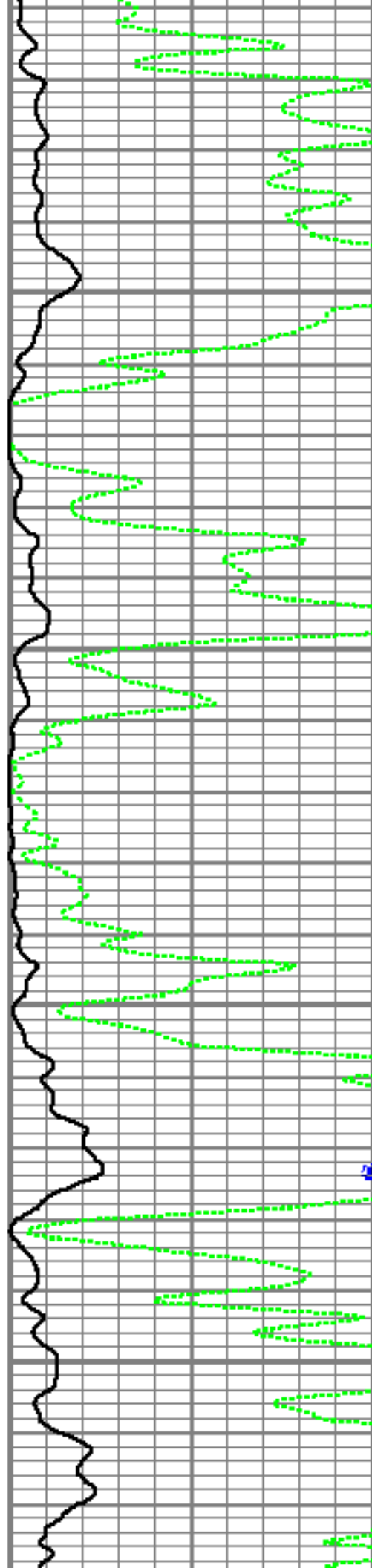


3650

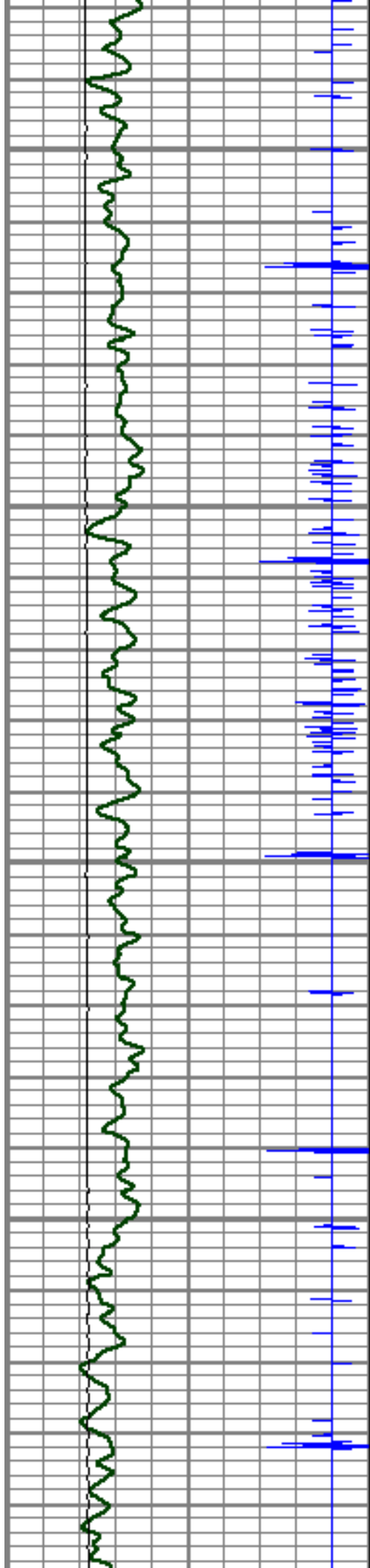
3700

3750

3800



7

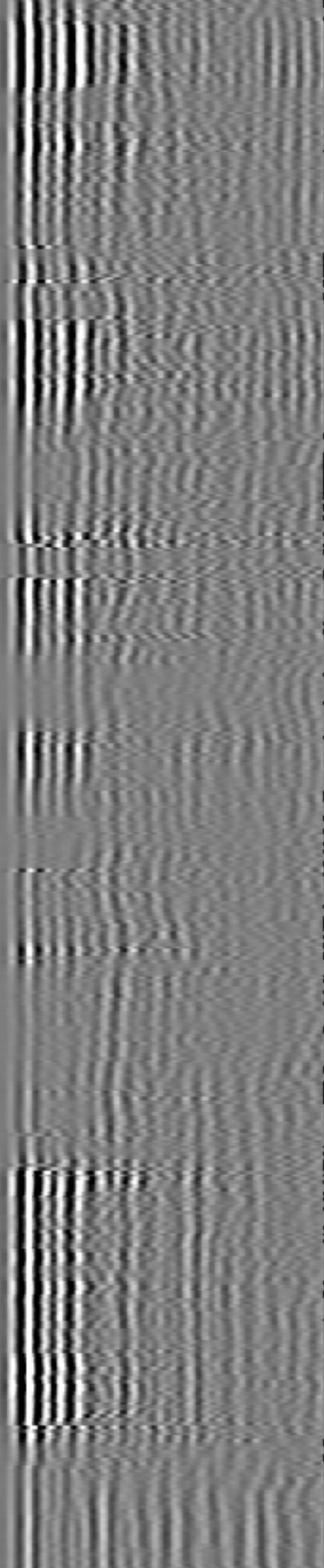
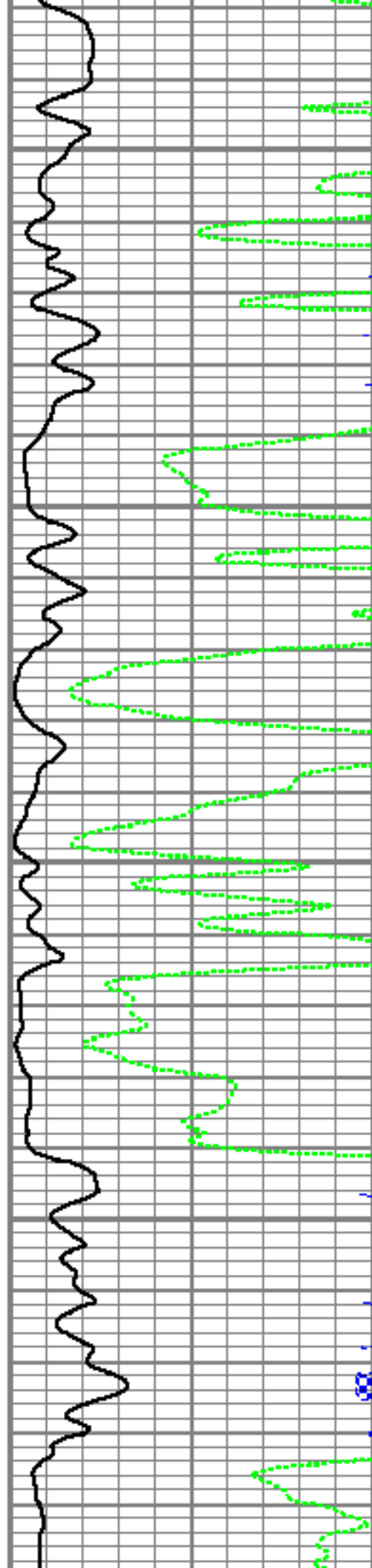


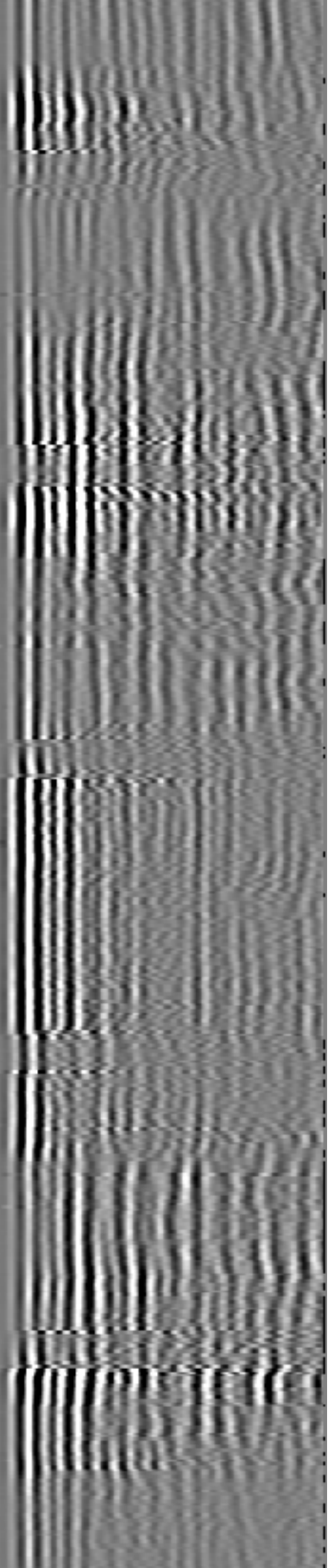
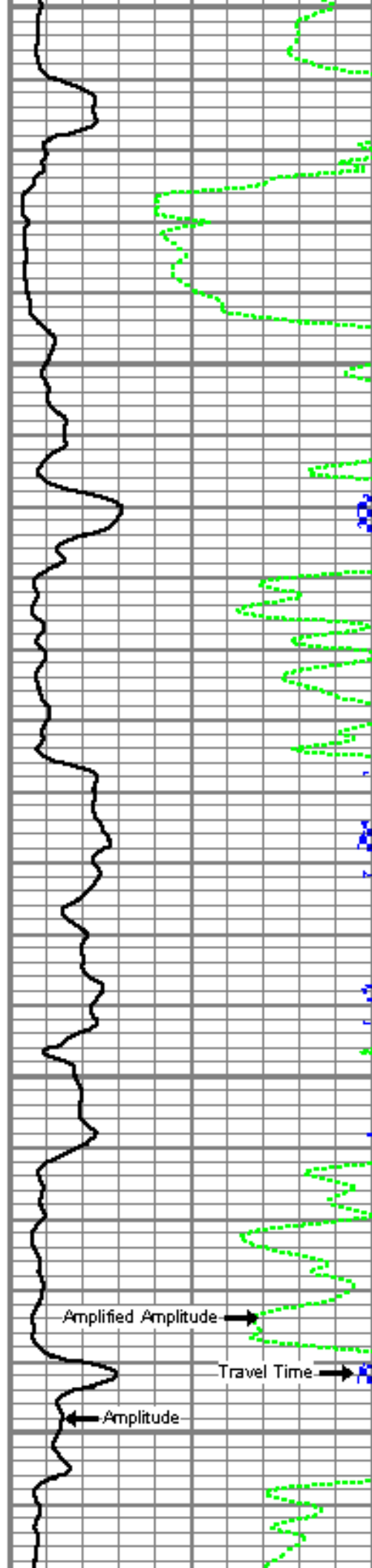
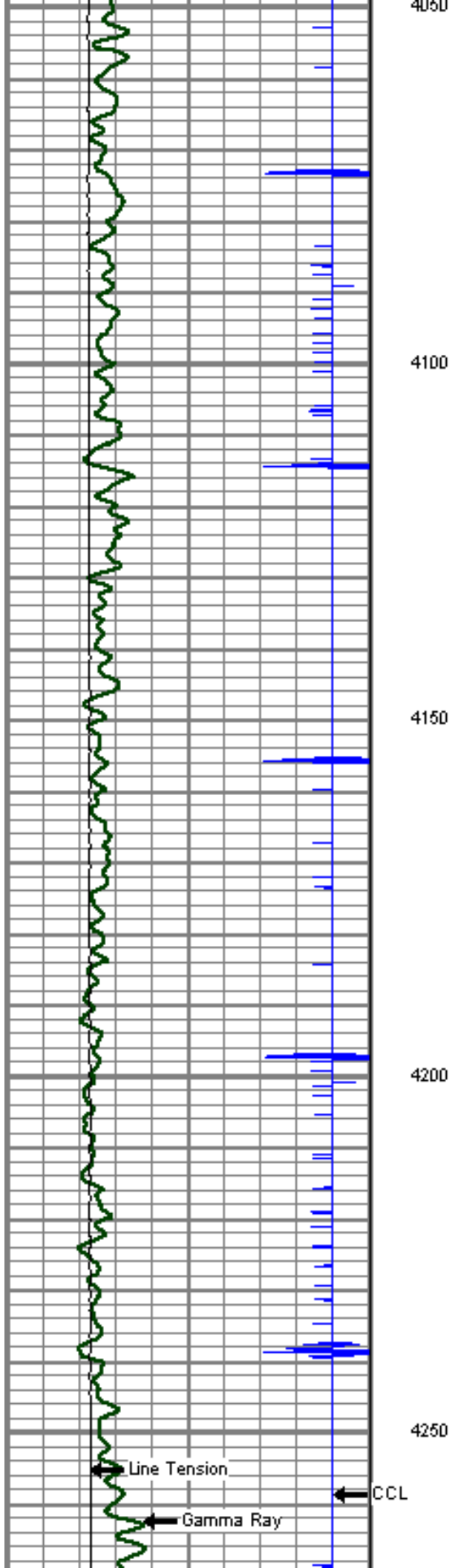
3850

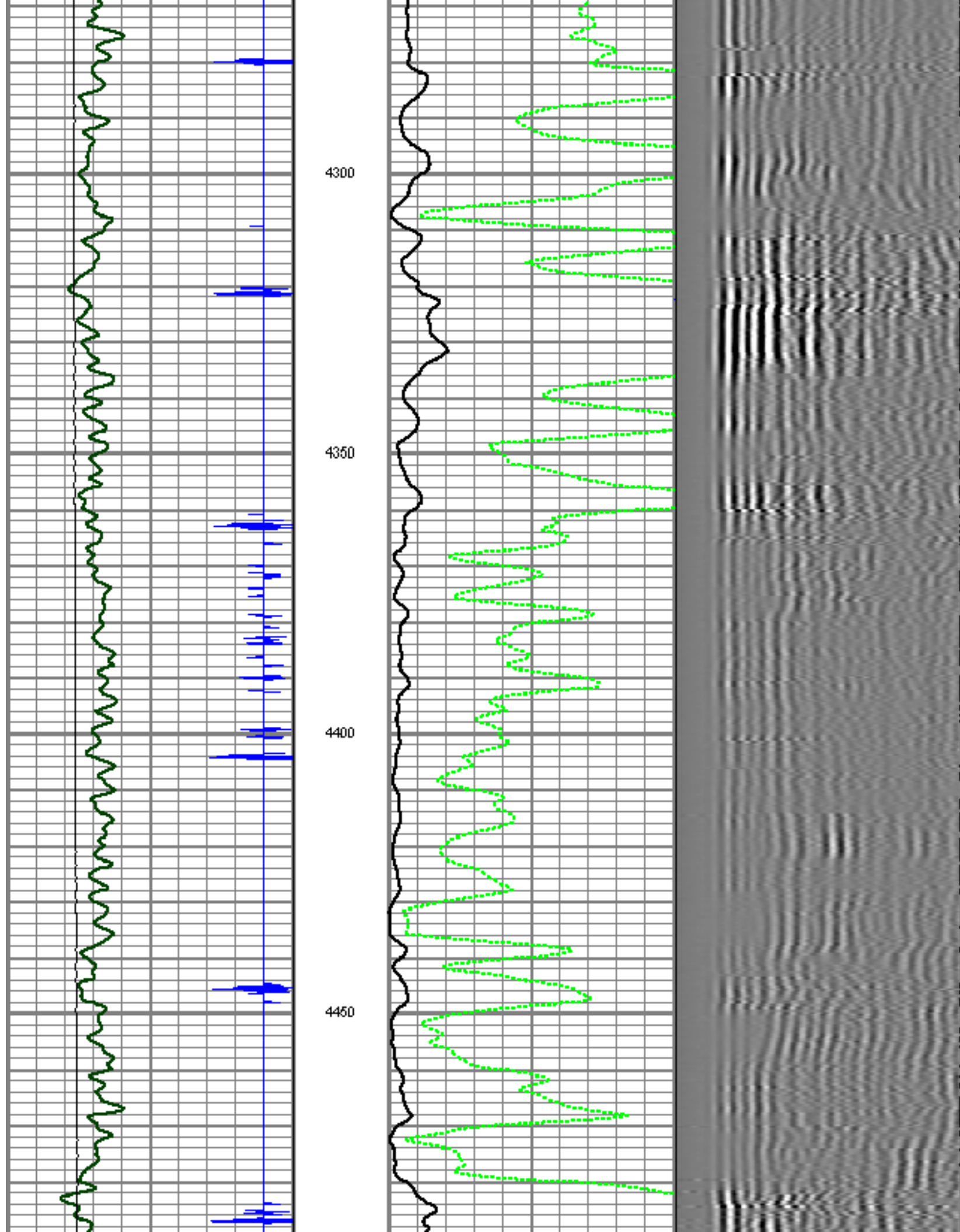
3900

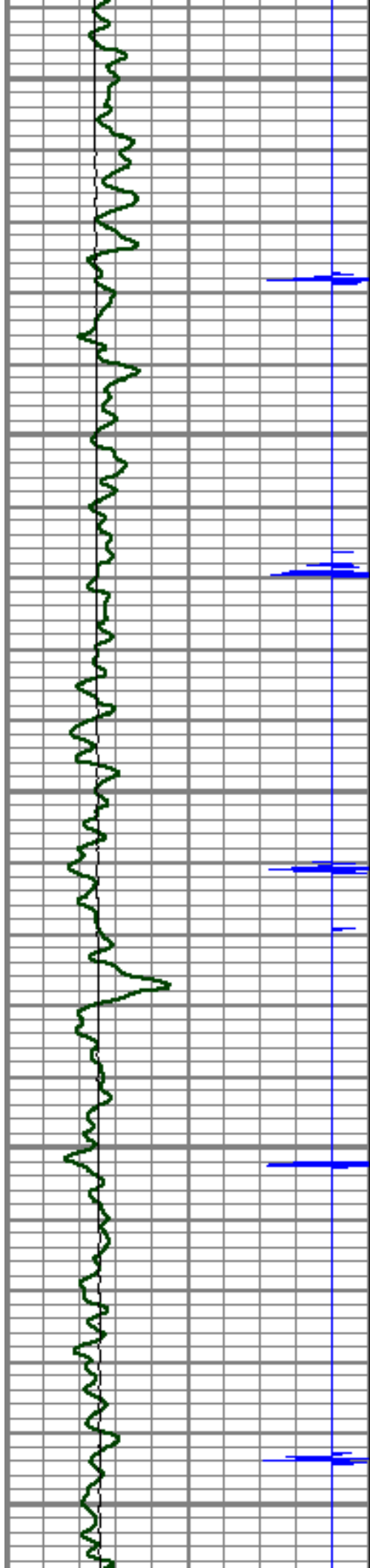
3950

4000









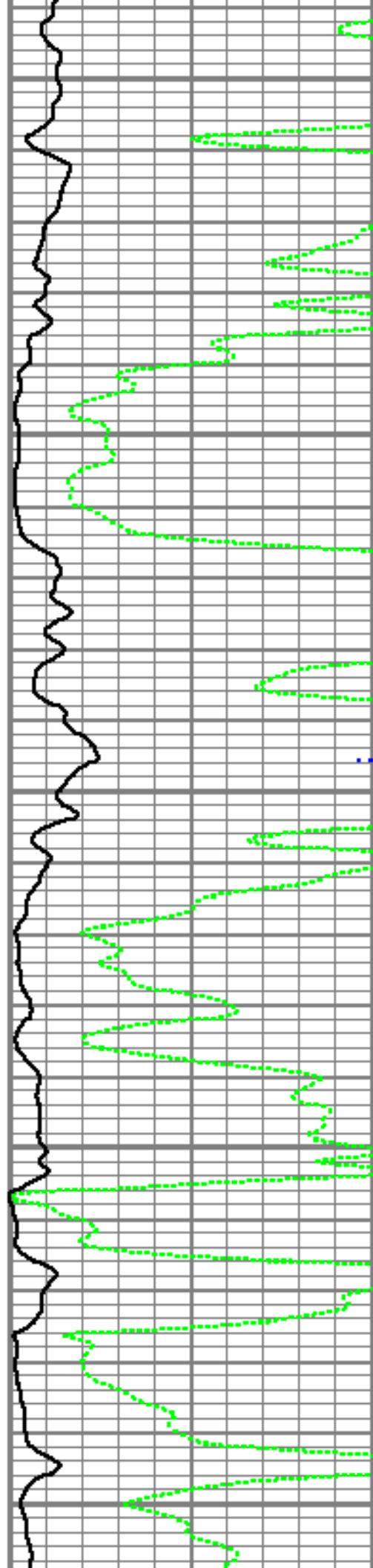
4500

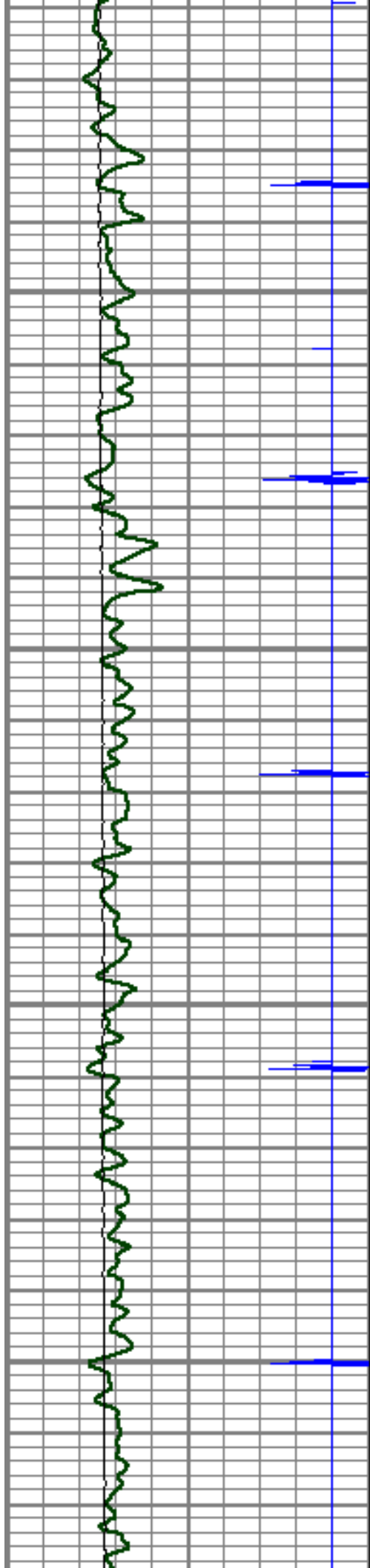
4550

4600

4650

4700



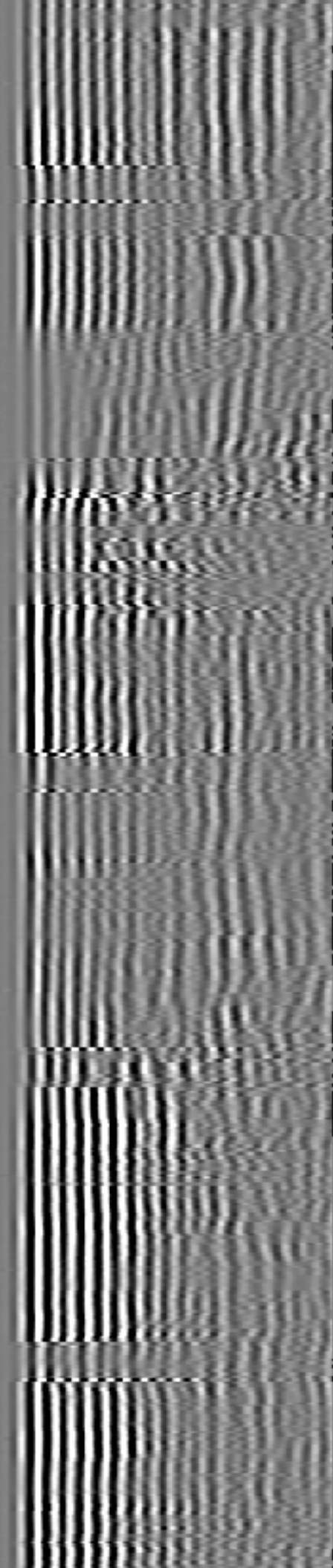
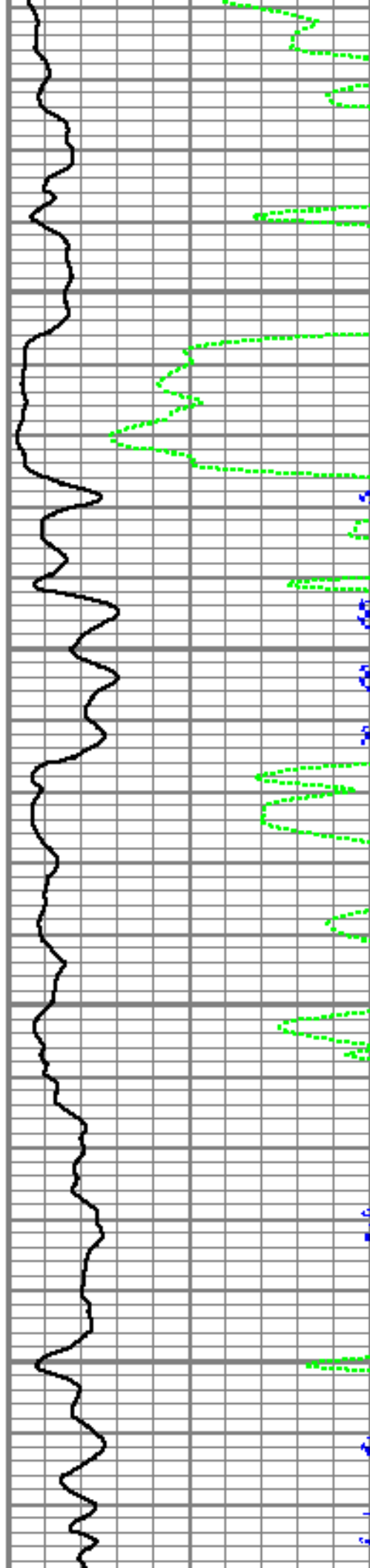


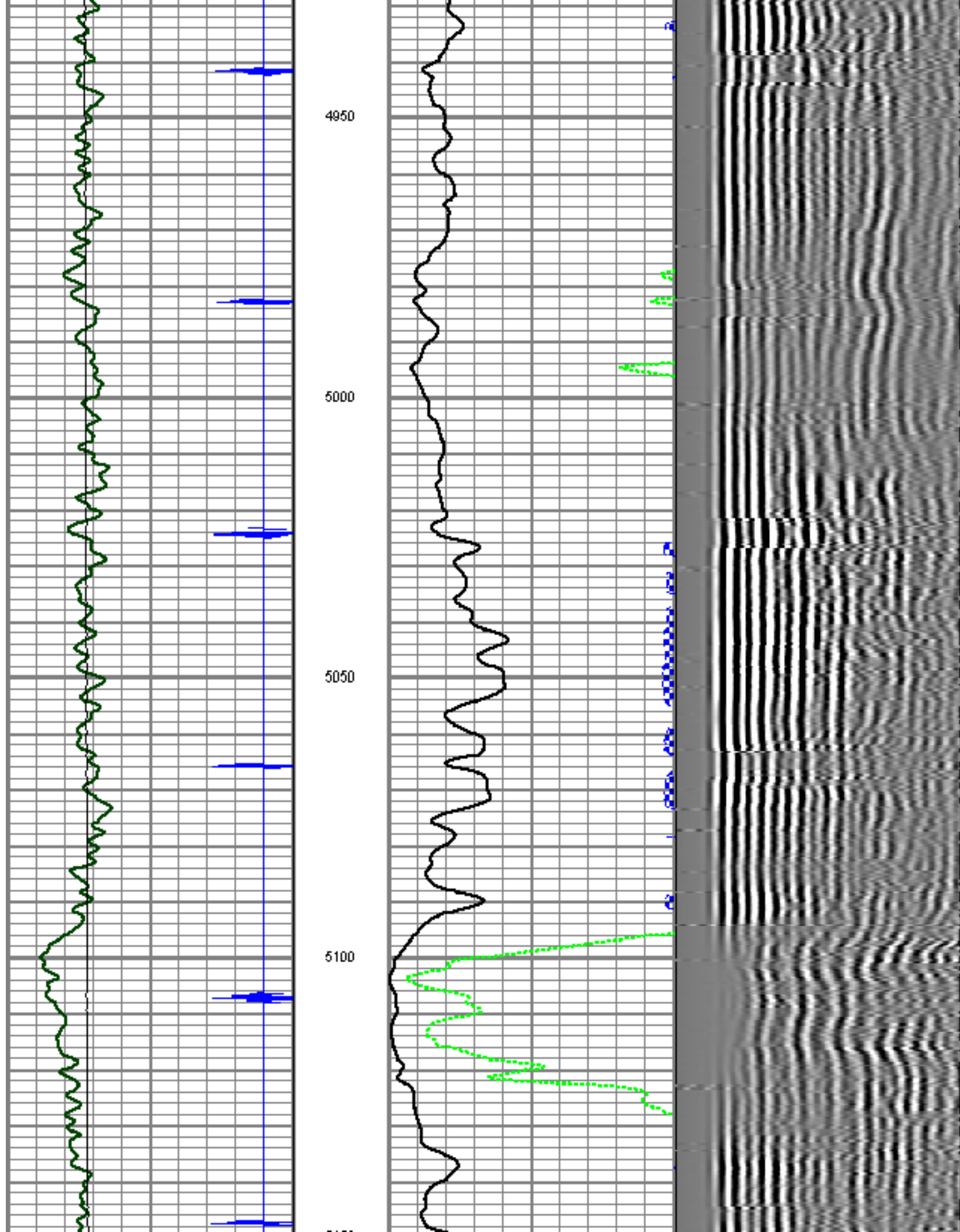
4750

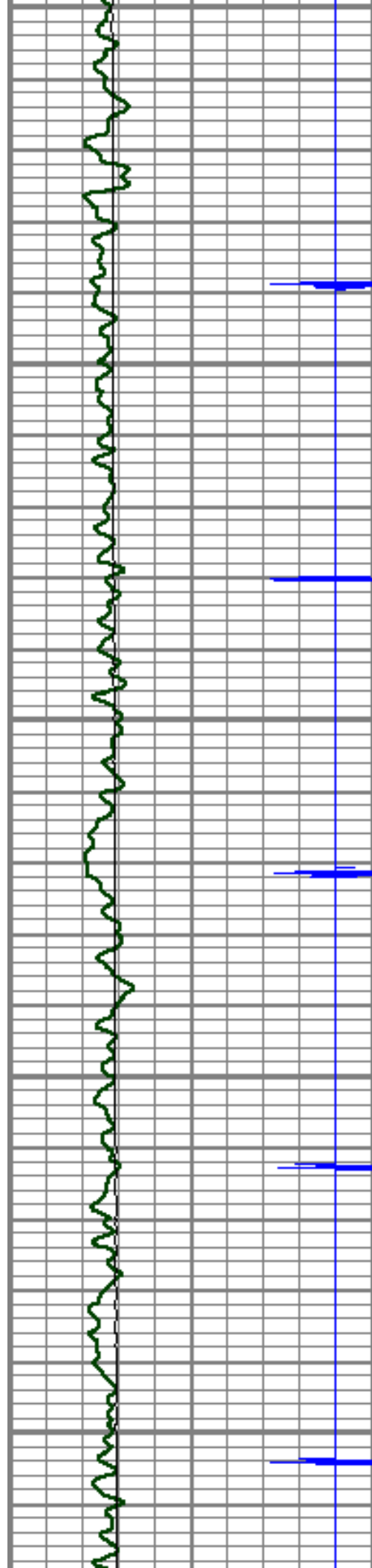
4800

4850

4900







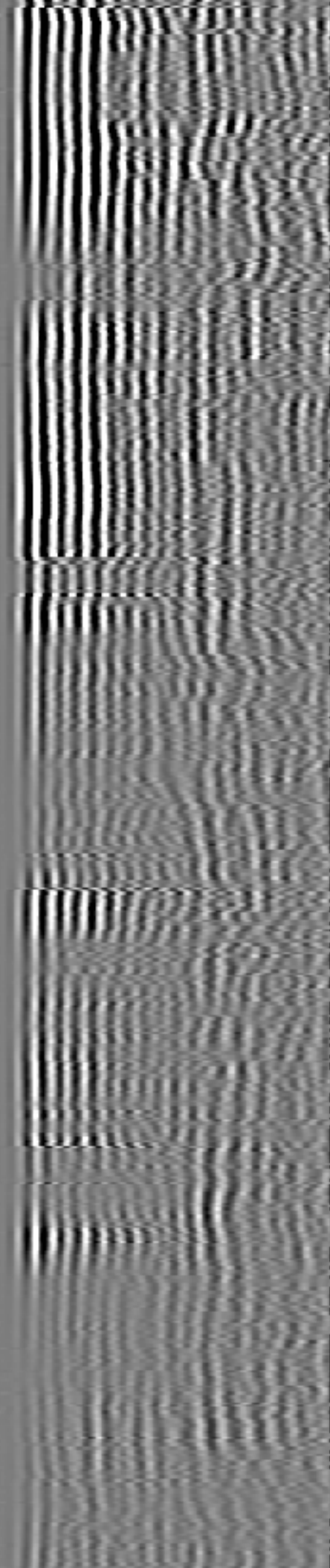
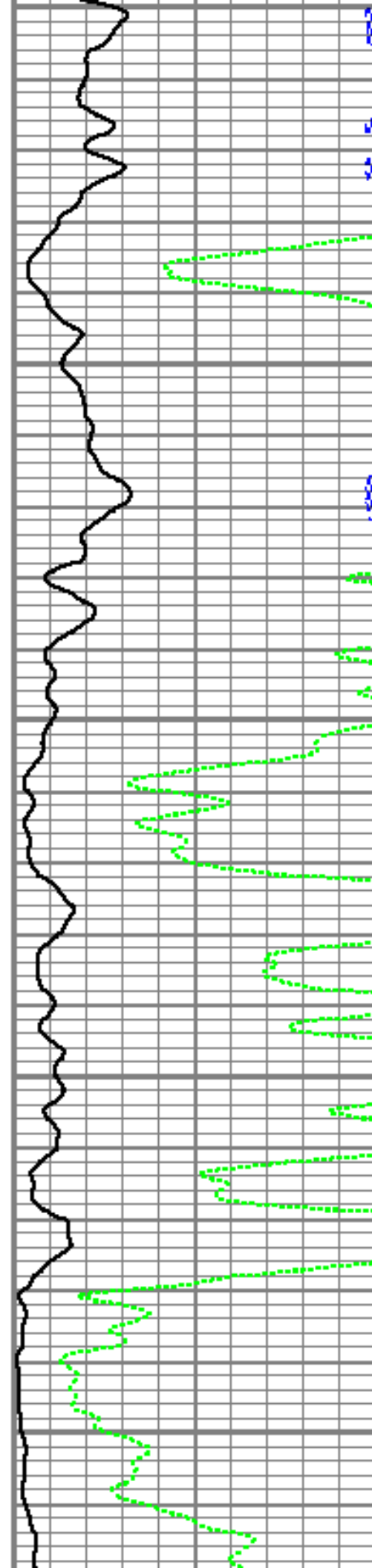
5150

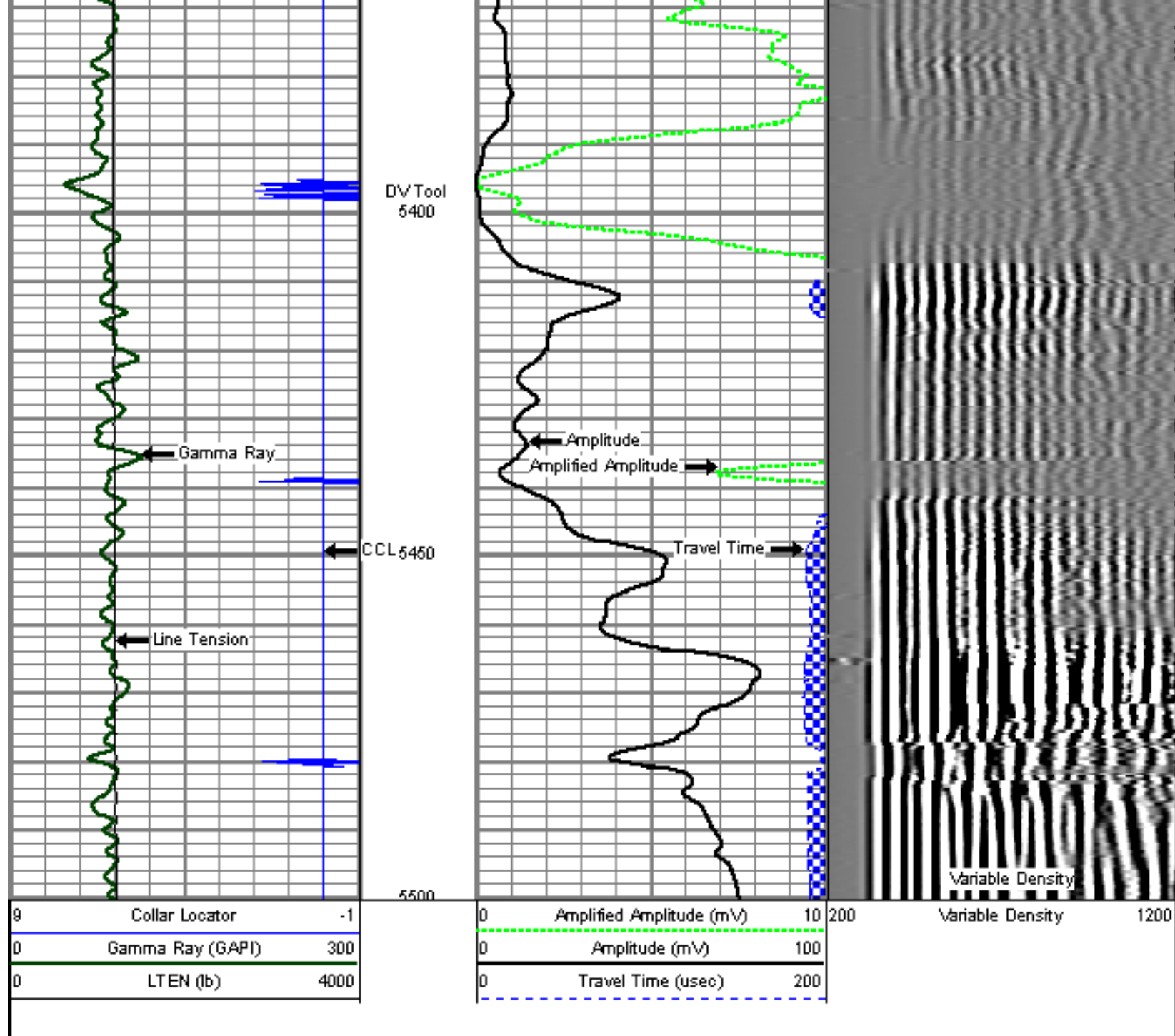
5200

5250

5300

5350





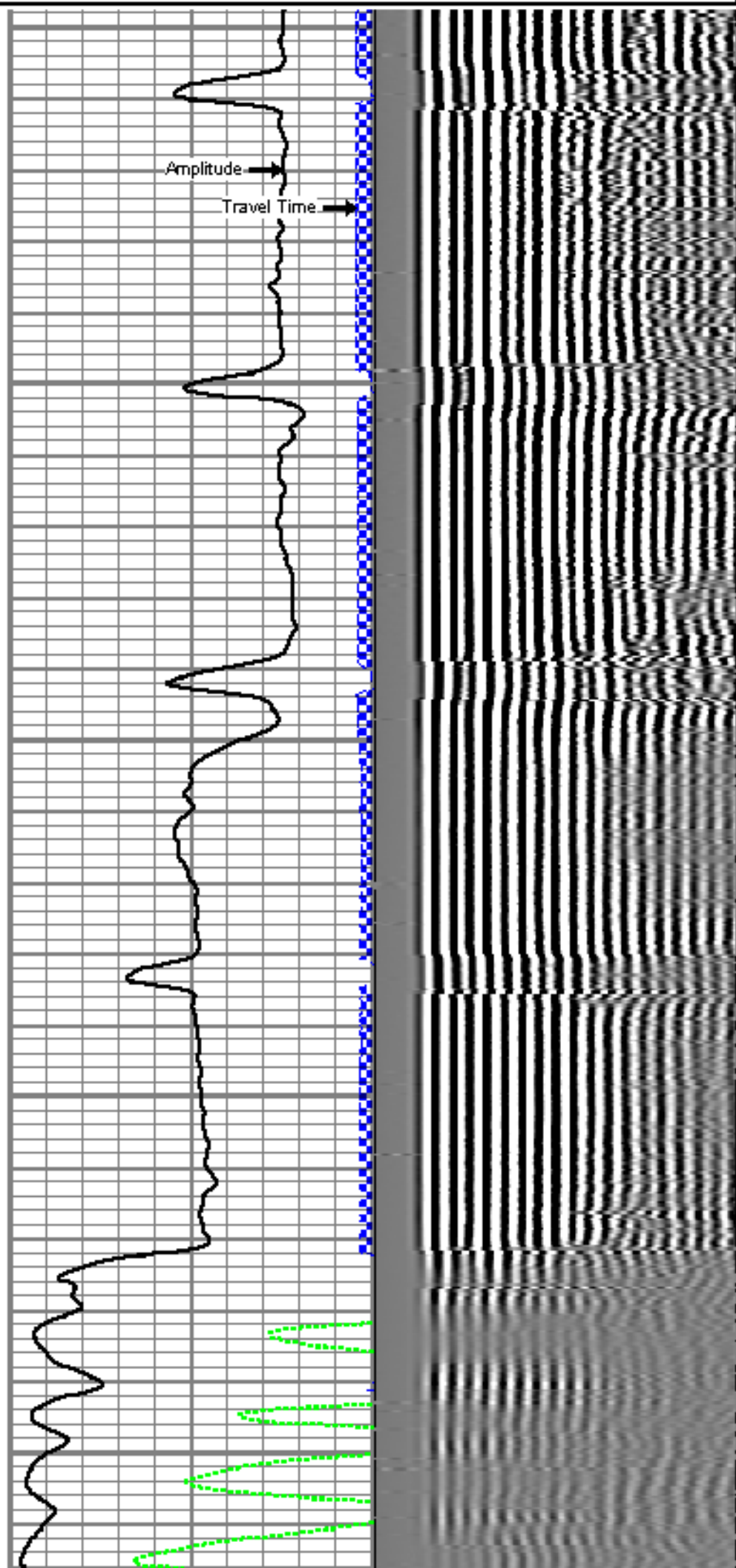
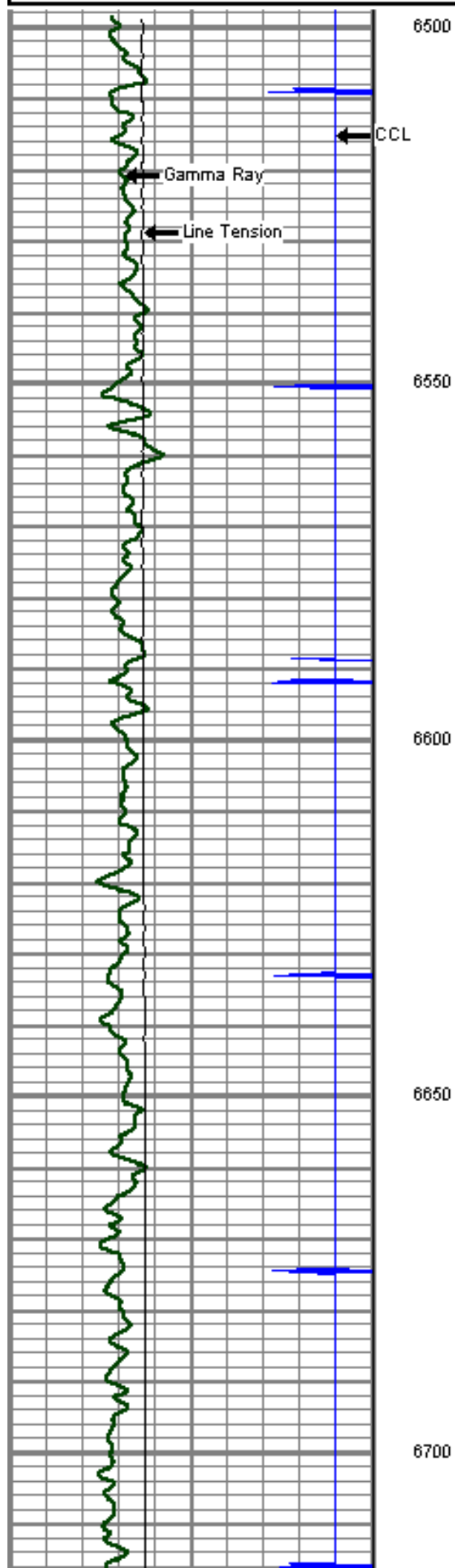
MAIN LOG SECTION

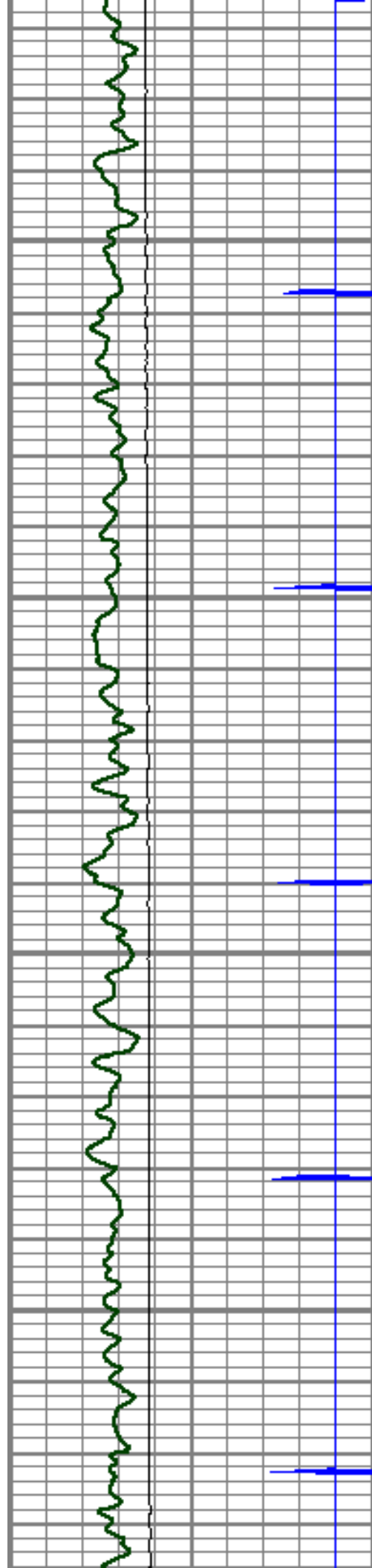
LOWER SECTION

5" = 100'

Database File: east rinn 1.db
 Dataset Pathname: pass9
 Presentation Format: cbl01son
 Dataset Creation: Tue Mar 15 10:25:37 2011 by Log SCH 110223
 Charted by: Depth in Feet scaled 1:240

9	Collar Locator	-1	0	Amplified Amplitude (mV)	10	200	Variable Density	1200
0	Gamma Ray (GAPI)	300	0	Amplitude (mV)	100			
0	LTEN (lb)	4000	0	Travel Time (usec)	200			



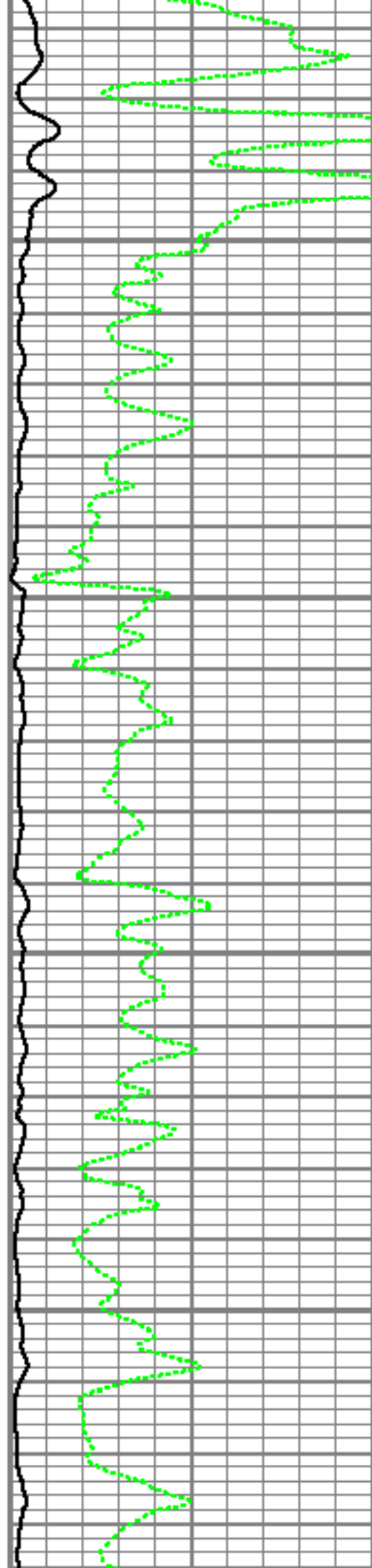


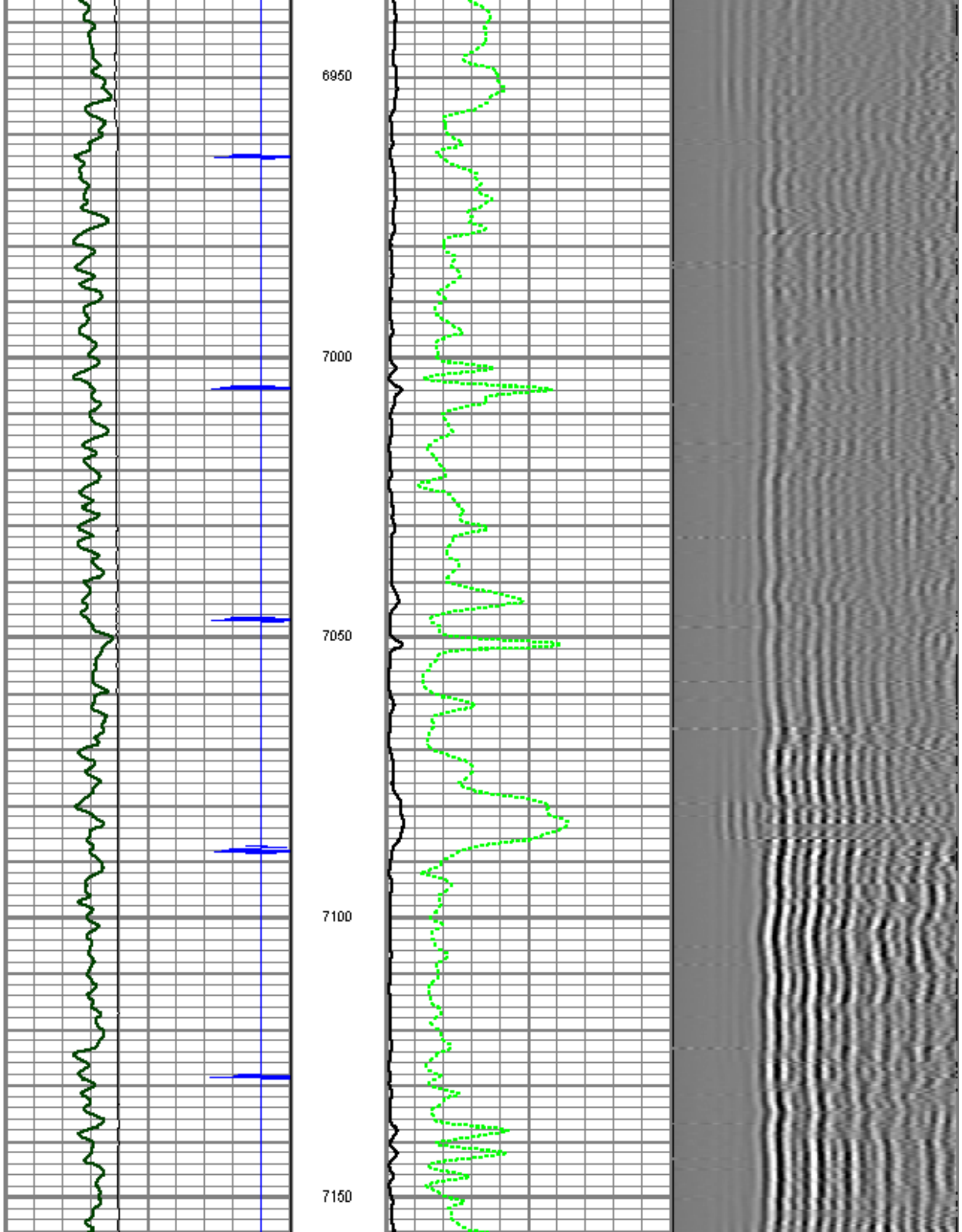
6750

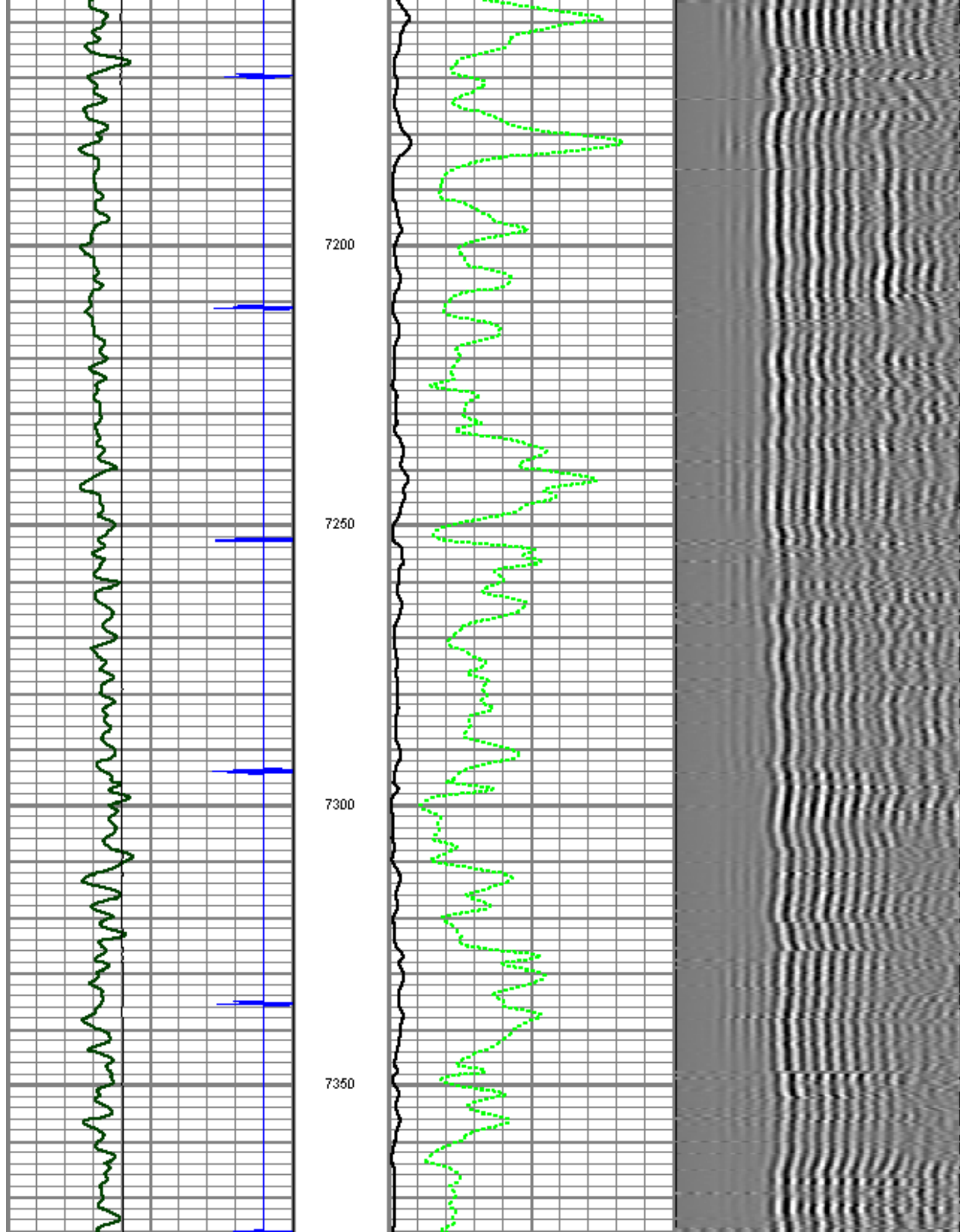
6800

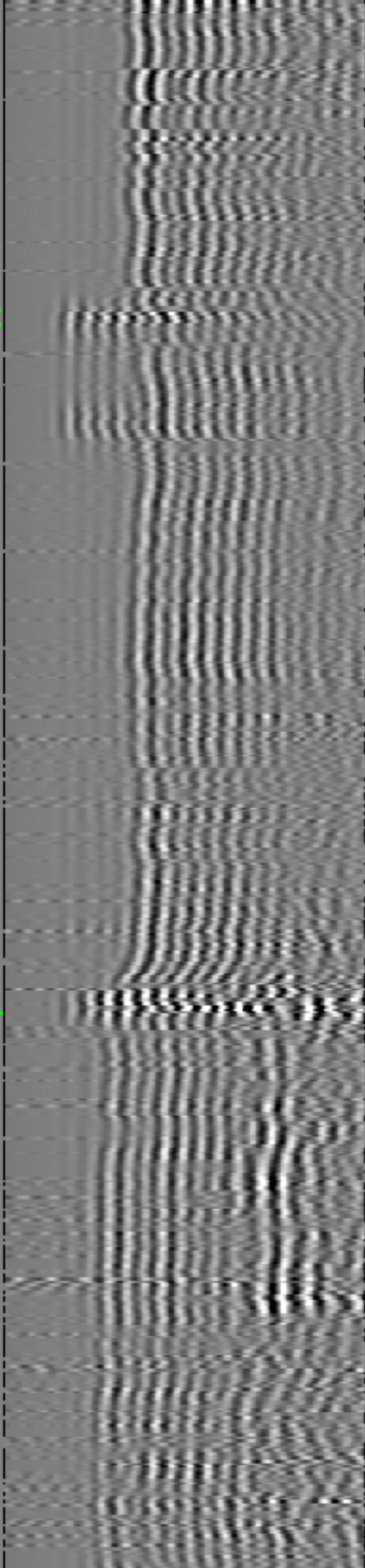
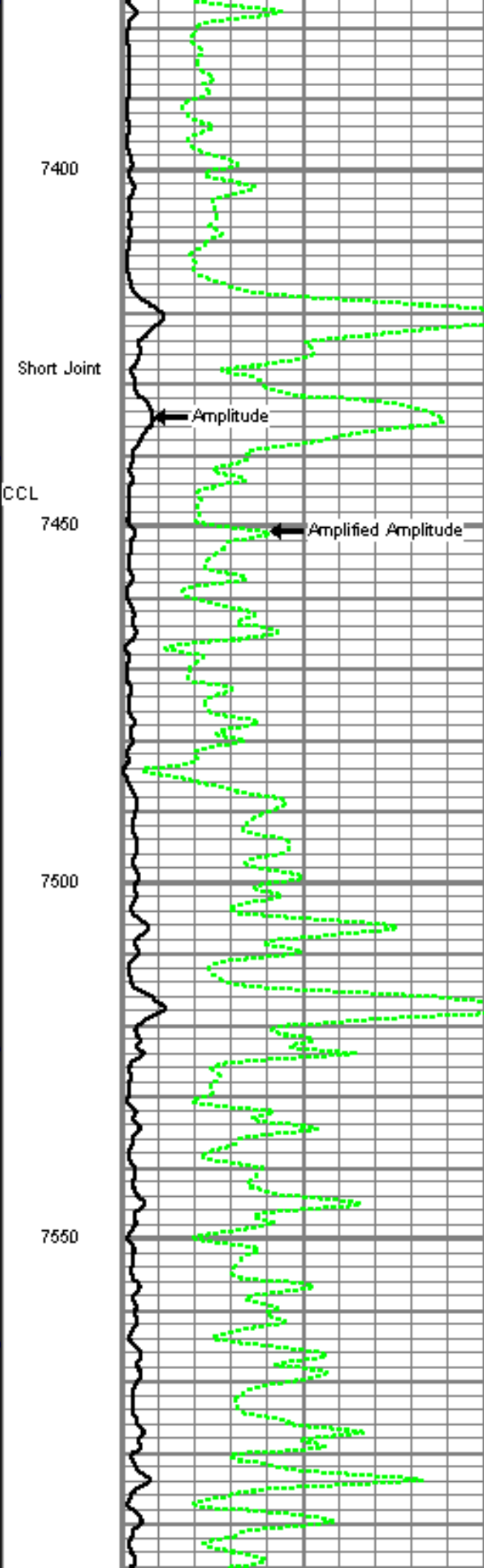
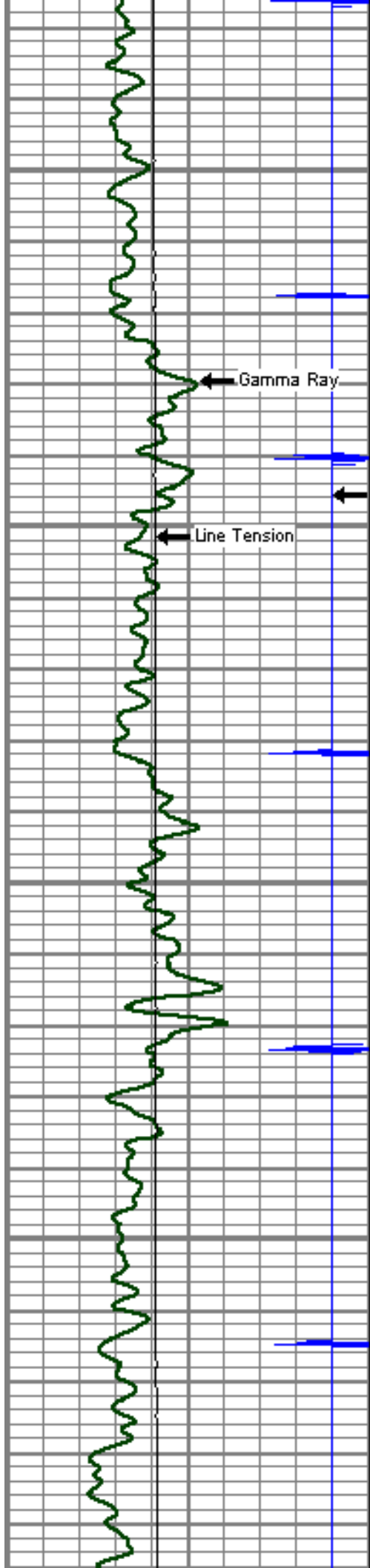
6850

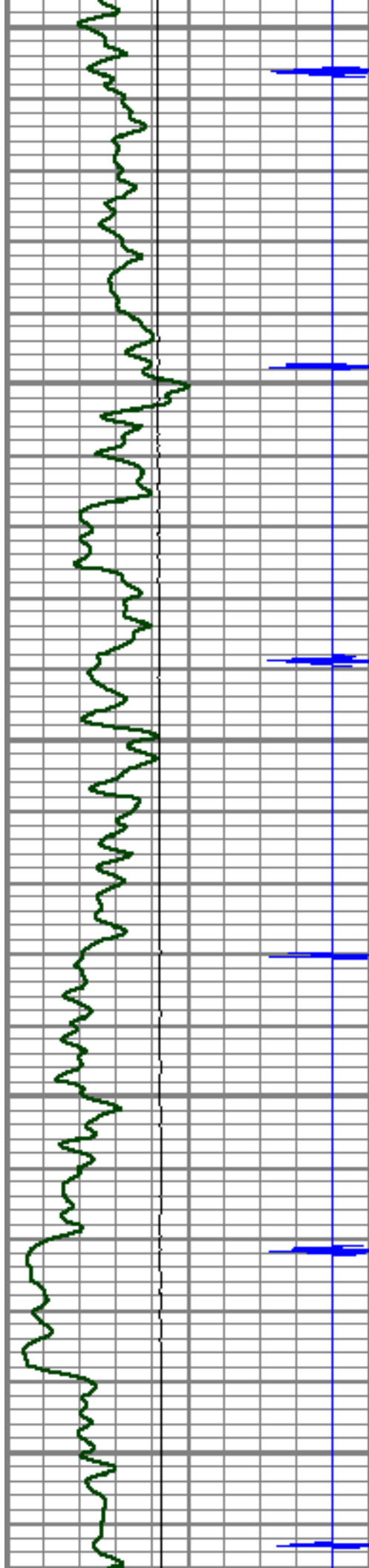
6900











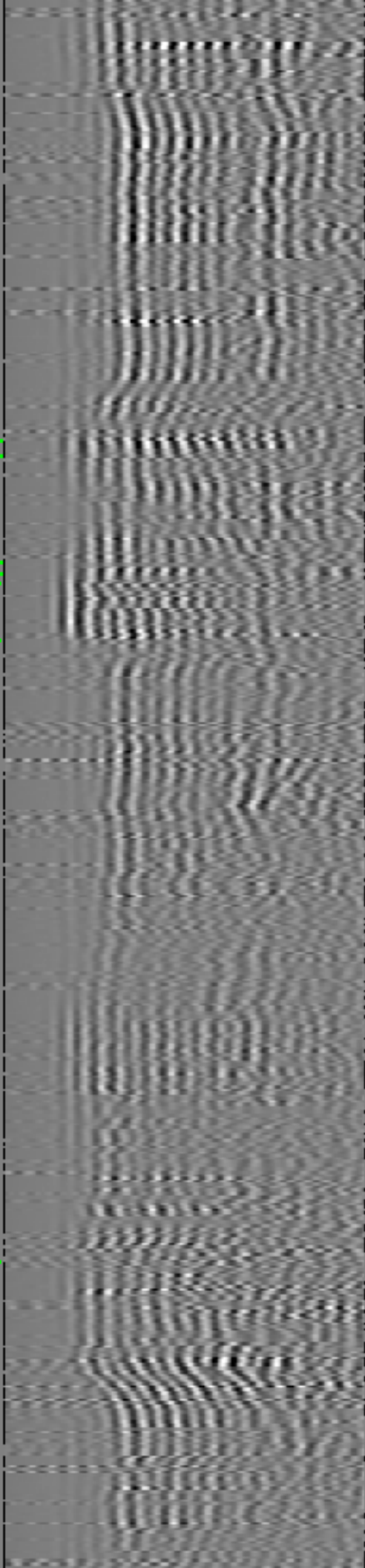
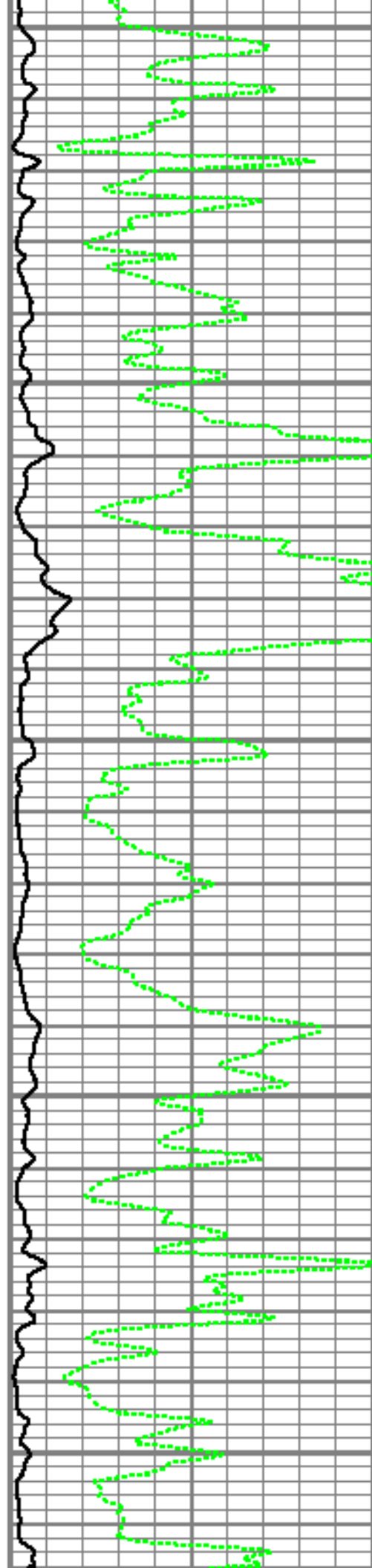
7600

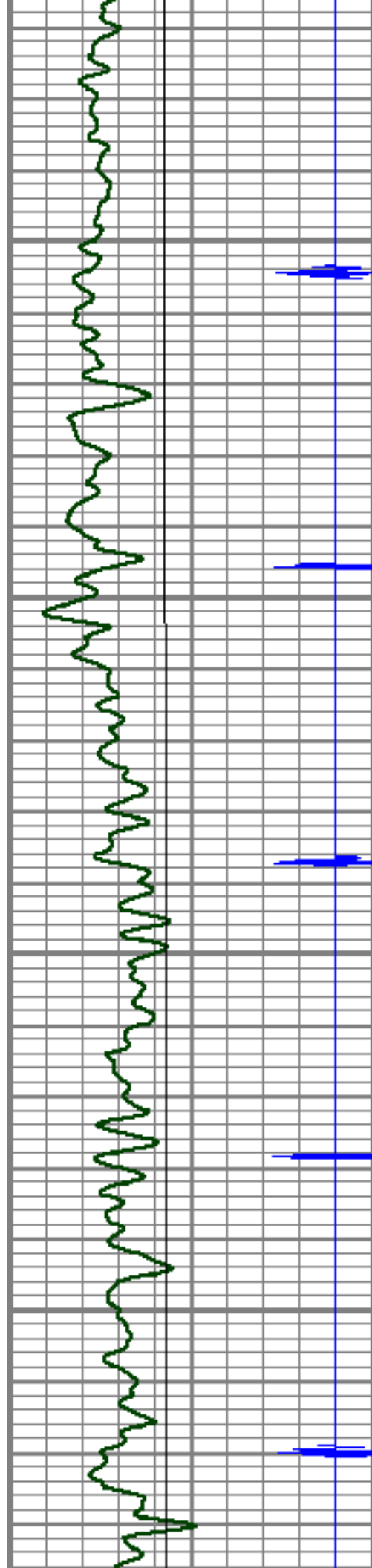
7650

7700

7750

7800



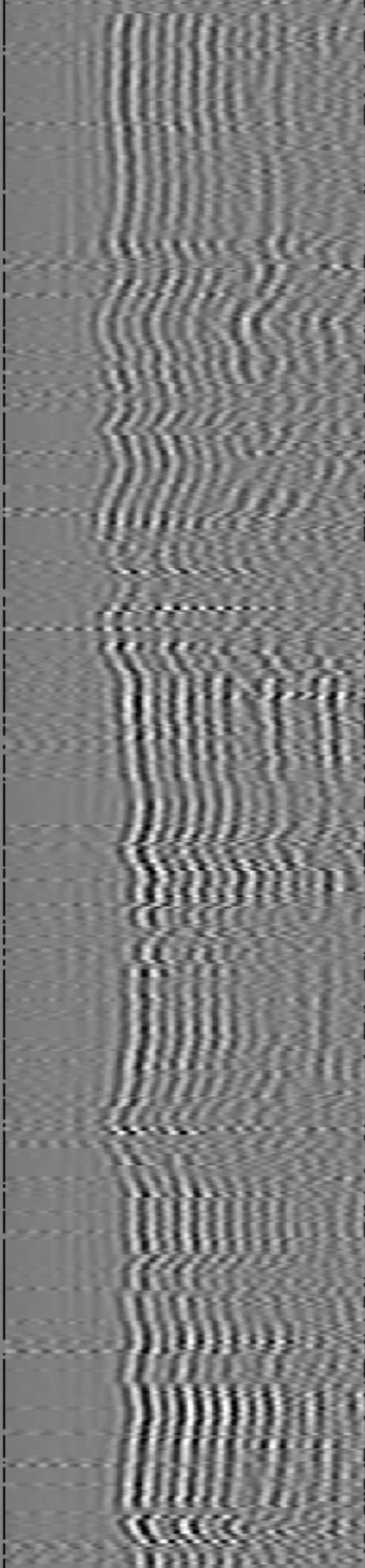
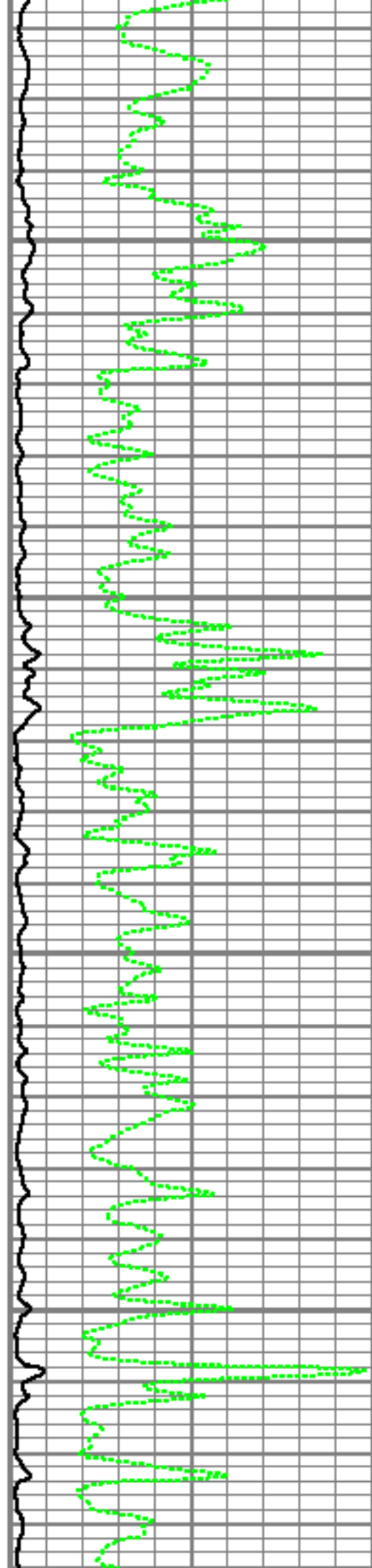


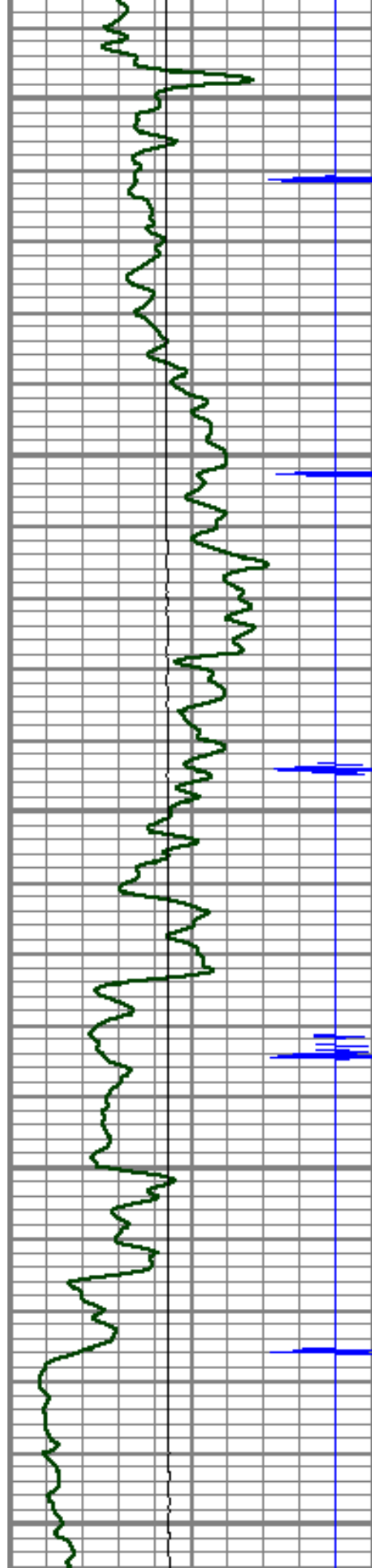
7850

7900

7950

8000





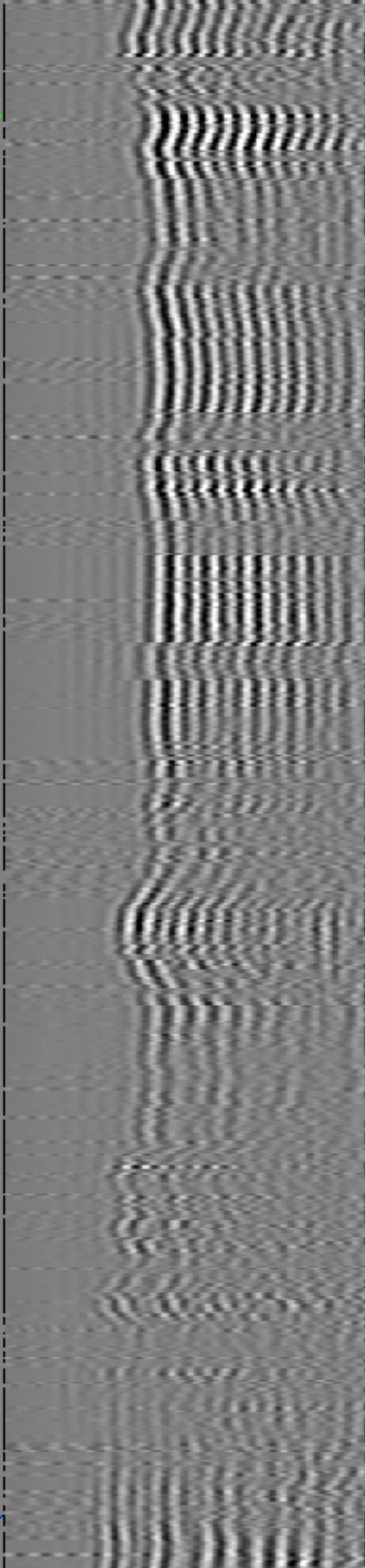
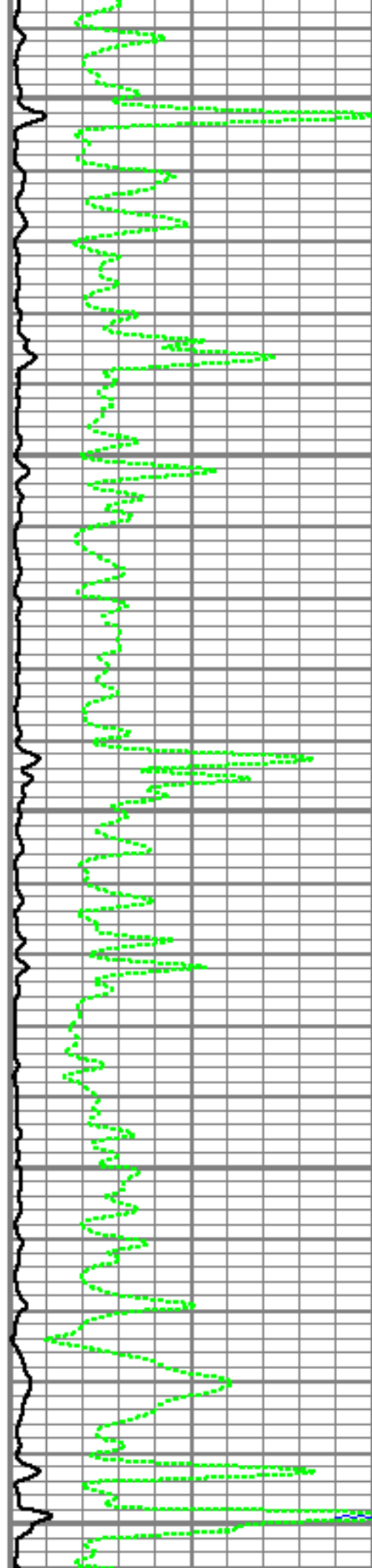
8050

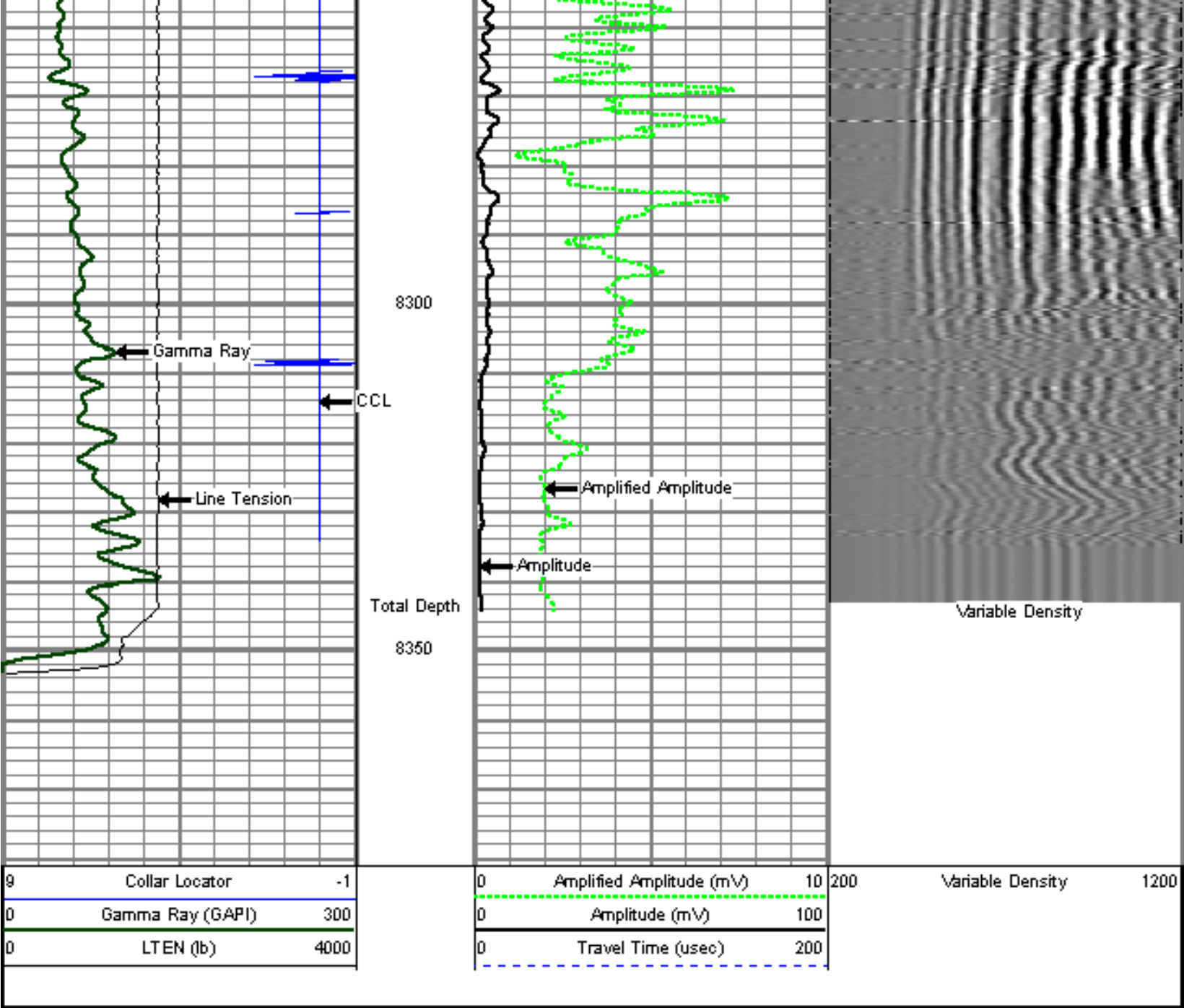
8100

8150

8200

8250





Sensor	Offset (ft)	Schematic	Description	Len (ft)	OD (in)	Wt (lb)
CCL	18.54		titan	1.00	1.69	2.00
			SNDX_CCL-SNDX_3_13_CCL (000001) CSS Gamma Ray CCL (CCL Section)	1.92	3.13	11.02
			SONDEX	2.71	2.75	32.00

