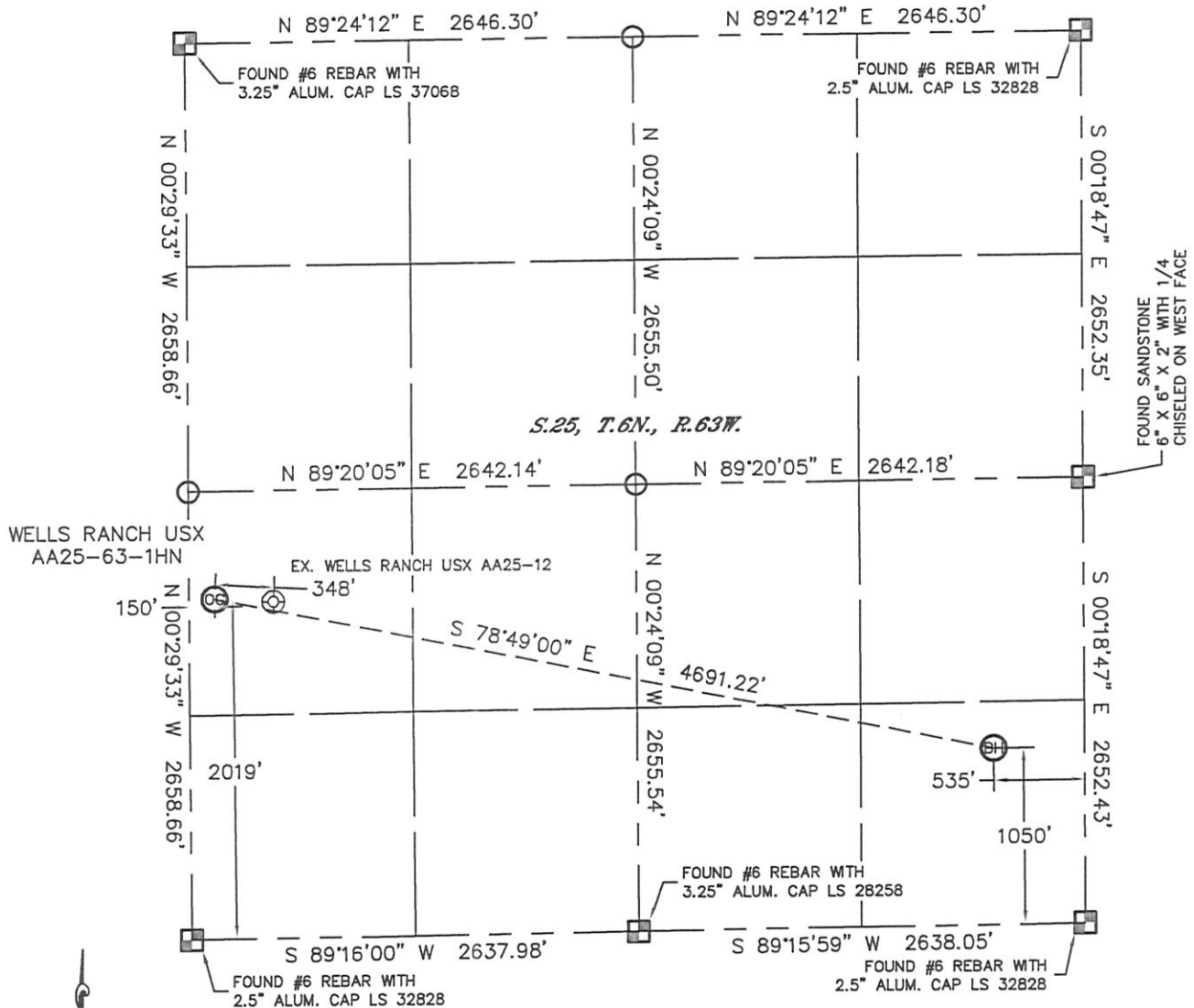


WELL LOCATION CERTIFICATE

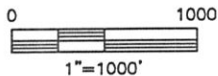
THIS MAP DOES NOT REPRESENT A BOUNDARY SURVEY

SECTION: 25
TOWNSHIP: 6N
RANGE: 63W



In accordance with a request from Sean Casper with Noble Energy Inc. Lat40°, Inc. has determined the surface location of the WELLS RANCH USX AA25-63-1HN to be 2019' from the SOUTH line and 150' from the WEST line and the bottom hole to be 1050' from the SOUTH line and 535' from the EAST line as measured at right angles from the section lines of Section 25, Township 6 North, Range 63 West of the Sixth Principal Meridian, County of Weld, State of Colorado.

I hereby state that this Well Location Certificate was prepared by me, or under my direct supervision, that the fieldwork was completed on 6/8/11, for and on behalf of Noble Energy Inc. That this is not a Land Survey Plat or an Improvement Survey Plat, and that it is not to be relied upon for establishment of fence, building, or other future improvement lines.



NOTE:

- 1) Bearings shown are Grid Bearings of the Colorado State Plane Coordinate System, North Zone, North American Datum 1983/2007. The lineal dimensions as contained herein are based upon the "U.S. Survey Foot."
- 2) Ground elevations are based on an observed GPS elevation (NAVD 1988 DATUM).
- 3) NEAREST EXISTING WELL: WELLS RANCH USX AA25-12, 348'
- 4) IMPROVEMENTS: See LOCATION DRAWING for all visible improvements within 400' of disturbed area.
- 5) SURFACE USE: RANGELAND
- 6) INSTRUMENT OPERATOR: ADAM KELLY

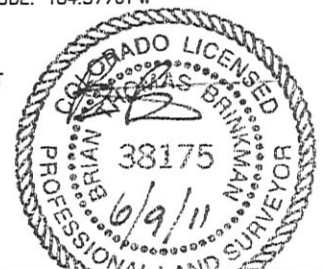
SURFACE LOCATION
LATITUDE: 40.45589°N
LONGITUDE: 104.39410°W
PDOP: 1.7
ELEV: 4790'
1/4, 1/4: NW1/4SW1/4
NEAREST PROPERTY LINE: 150' WEST

BOTTOM HOLE
LATITUDE: 40.45303°N
LONGITUDE: 104.37761°W

NOTE
According to Colorado law, you must commence any legal action based upon any defect in this W.L.C. within three years after you discover such defect. In no event, may any action based upon any defect in this survey be commenced more than ten years after the date of the certificate shown hereon. (13-80-105 C.R.S.)

LEGEND

- = ALIQUOT MONUMENT AS DESCRIBED
- = CALCULATED POSITION



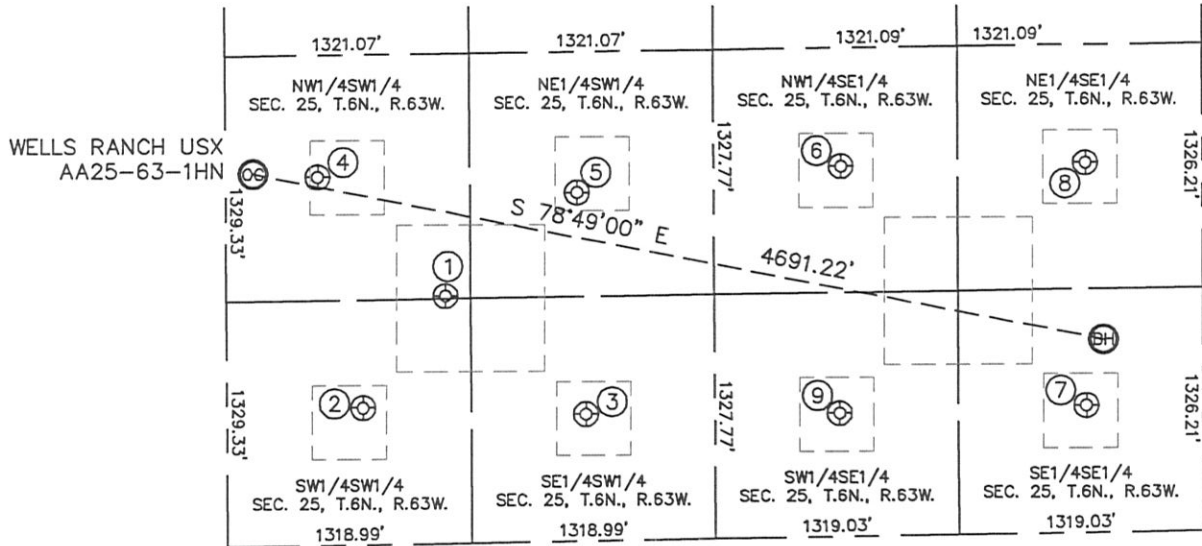
Brian T. Brinkman—On behalf of Lat40°, Inc.
Colorado Licensed Professional
Land Surveyor No. 38175

PROJECT#: 2011115

SITE SKETCH

WELLS RANCH USX AA25-63-1HN

SECTION: 25
TOWNSHIP: 6N
RANGE: 63W



- | | | | | |
|---|---|--|--|---|
| ①
WELLS RANCH USX
AA25-25
NW1/4SW1/4
1344' FSL
1184' FWL
LAT-40.45384°N
LONG-104.39040°W
PDOP: 2.2
ELEV: 4769' | ②
WELLS RANCH USX
AA25-13
SW1/4SW1/4
743' FSL
736' FWL
LAT-40.45219°N
LONG-104.39202°W
PDOP: 1.3
ELEV: 4776' | ③
WELLS RANCH USX
AA25-14
SE1/4SW1/4
689' FSL
1940' FWL
LAT-40.45204°N
LONG-104.38769°W
PDOP: 1.9
ELEV: 4757' | ④
WELLS RANCH USX
AA25-12
NW1/4SW1/4
1998' FSL
497' FWL
LAT-40.45563°N
LONG-104.39286°W
PDOP: 2.5
ELEV: 4777' | ⑤
WELLS RANCH USX
AA25-11
NE1/4SW1/4
1892' FSL
1899' FWL
LAT-40.45534°N
LONG-104.38782°W
PDOP: 5.1
ELEV: 4748' |
| ⑥
WELLS RANCH USX
AA25-10
NW1/4SE1/4
2012' FSL
1953' FEL
LAT-40.45567°N
LONG-104.38268°W
PDOP: 4.2
ELEV: 4728' | ⑦
WELLS RANCH USX
AA25-16
SE1/4SE1/4
693' FSL
629' FEL
LAT-40.45205°N
LONG-104.37796°W
PDOP: 4.6
ELEV: 4707' | ⑧
WELLS RANCH USX
AA25-09
NE1/4SE1/4
2012' FSL
631' FEL
LAT-40.45567°N
LONG-104.37793°W
PDOP: 3.5
ELEV: 4719' | ⑨
WELLS RANCH USX
AA25-15
SW1/4SE1/4
671' FSL
1963' FEL
LAT-40.45199°N
LONG-104.38275°W
PDOP: 5.3
ELEV: 4720' | |

