

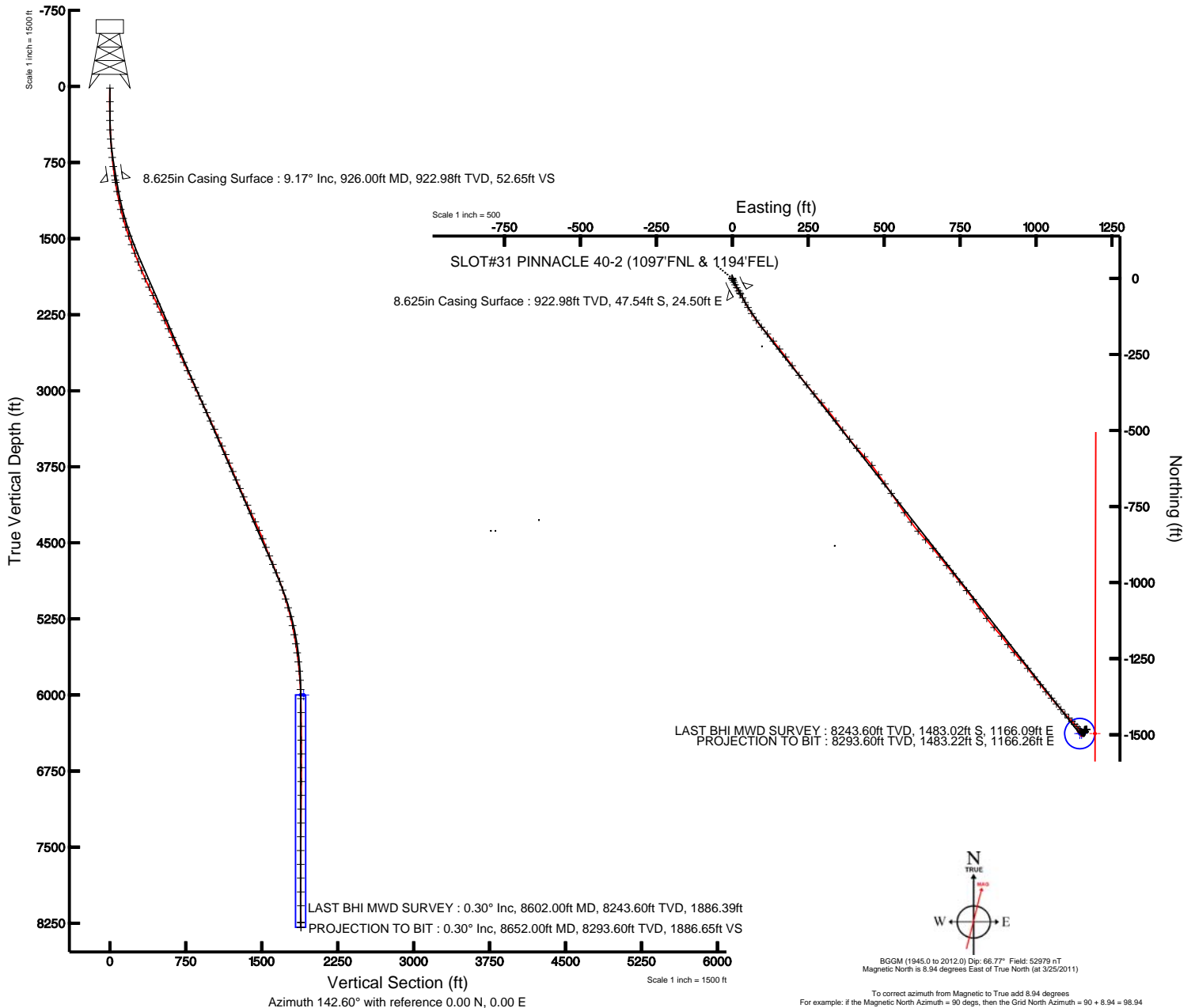


KERR MCGEE OIL & GAS ONSHORE LP

Location: COLORADO Slot: SLOT#31 PINNACLE 40-2 (1097'FNL & 1194'FEL)
Field: WELD COUNTY (KERR MCGEE) Well: PINNACLE 40-2
Facility: SEC.02-T1N-R68W Wellbore: PINNACLE 40-2 PWB



Plot reference wellpath is PINNACLE 40-2 (REV-A.0) PWP	Grid System: NAD83 / Lambert Colorado State Planes, Northern Zone (501), US feet
True vertical depths are referenced to XTREME 12 (RKB)	North Reference: True north
Measured depths are referenced to XTREME 12 (RKB)	Scale: True distance
XTREME 12 (RKB) to Mean Sea Level: 4997 feet	Depths are in feet
Mean Sea Level to Mud line (Facility: SEC.02-T1N-R68W): 0 feet	Created by: cookdamm on 6/9/2011
Coordinates are in feet referenced to Slot	





Actual Wellpath Report

PINNACLE 40-2 AWP

Page 1 of 5



INTEQ

REFERENCE WELLPATH IDENTIFICATION

Operator	KERR MCGEE OIL & GAS ONSHORE LP	Slot	SLOT#31 PINNACLE 40-2 (1097'FNL & 1194'FEL)
Area	COLORADO	Well	PINNACLE 40-2
Field	WELD COUNTY (KERR MCGEE)	Wellbore	PINNACLE 40-2 AWB
Facility	SEC.02-T1N-R68W		

REPORT SETUP INFORMATION

Projection System	NAD83 / Lambert Colorado State Planes, Northern Zone (501), US feet	Software System	WellArchitect® 2.0
North Reference	True	User	Cookdanm
Scale	0.999961	Report Generated	6/9/2011 at 10:53:44 AM
Convergence at slot	0.35° East	Database/Source file	WA_DENVER/PINNACLE_40-2_AWB.xml

WELLPATH LOCATION

	Local coordinates		Grid coordinates		Geographic coordinates	
	North[ft]	East[ft]	Easting[USft]	Northing[USft]	Latitude	Longitude
Slot Location	2965.09	2412.58	3149567.53	1274151.41	40°05'04.916"N	104°57'55.642"W
Facility Reference Pt			3147172.67	1271172.18	40°04'35.616"N	104°58'26.681"W
Field Reference Pt			3197771.84	1268891.29	40°04'09.600"N	104°47'36.000"W

WELLPATH DATUM

Calculation method	Minimum curvature	XTREME 12 (RKB) to Facility Vertical Datum	4997.00ft
Horizontal Reference Pt	Slot	XTREME 12 (RKB) to Mean Sea Level	4997.00ft
Vertical Reference Pt	XTREME 12 (RKB)	Facility Vertical Datum to Mud Line (Facility)	0.00ft
MD Reference Pt	XTREME 12 (RKB)	Section Origin	N 0.00, E 0.00 ft
Field Vertical Reference	Mean Sea Level	Section Azimuth	142.60°



Actual Wellpath Report

PINNACLE 40-2 AWP

Page 2 of 5



INTEQ

REFERENCE WELLPATH IDENTIFICATION

Operator	KERR MCGEE OIL & GAS ONSHORE LP	Slot	SLOT#31 PINNACLE 40-2 (1097'FNL & 1194'FEL)
Area	COLORADO	Well	PINNACLE 40-2
Field	WELD COUNTY (KERR MCGEE)	Wellbore	PINNACLE 40-2 AWB
Facility	SEC.02-T1N-R68W		

WELLPATH DATA (89 stations) † = interpolated/extrapolated station

MD [ft]	Inclination [°]	Azimuth [°]	TVD [ft]	Vert Sect [ft]	North [ft]	East [ft]	DLS [°/100ft]	Comments
0.00†	0.000	319.400	0.00	0.00	0.00	0.00	0.00	
15.00	0.000	319.400	15.00	0.00	0.00	0.00	0.00	
150.00	0.400	319.400	150.00	-0.47	0.36	-0.31	0.30	
242.00	0.300	315.500	242.00	-1.03	0.77	-0.68	0.11	
334.00	1.000	136.600	333.99	-0.47	0.36	-0.30	1.41	
427.00	2.300	159.100	426.95	2.13	-1.97	0.92	1.54	
518.00	3.700	157.700	517.83	6.71	-6.39	2.69	1.54	
609.00	4.900	156.600	608.57	13.32	-12.68	5.35	1.32	
700.00	6.400	152.800	699.12	22.08	-20.76	9.21	1.70	
790.00	7.300	151.400	788.48	32.67	-30.24	14.24	1.02	
881.00	9.100	148.200	878.55	45.55	-41.43	20.80	2.04	
949.00	9.200	149.900	945.68	56.29	-50.70	26.36	0.42	
1040.00	10.000	151.000	1035.41	71.32	-63.91	33.84	0.90	
1131.00	11.200	152.100	1124.85	87.85	-78.63	41.80	1.34	
1221.00	13.600	148.900	1212.75	107.00	-95.42	51.36	2.77	
1312.00	16.200	147.500	1300.68	130.28	-115.29	63.71	2.88	
1403.00	18.100	145.700	1387.63	157.05	-137.67	78.50	2.17	
1494.00	18.300	139.100	1474.09	185.43	-160.15	95.82	2.27	
1584.00	19.500	139.100	1559.23	214.52	-182.19	114.91	1.33	
1675.00	20.700	141.200	1644.69	245.76	-206.20	134.93	1.54	
1766.00	21.300	142.600	1729.65	278.37	-231.87	155.05	0.86	
1857.00	21.900	141.500	1814.26	311.87	-258.28	175.65	0.80	
1947.00	24.900	145.000	1896.85	347.59	-286.94	196.97	3.67	
2038.00	26.000	142.900	1979.02	386.67	-318.55	219.99	1.56	
2129.00	25.600	140.500	2060.95	426.27	-349.63	244.53	1.23	
2220.00	24.900	141.900	2143.26	465.07	-379.87	268.86	1.01	
2310.00	24.900	138.000	2224.90	502.90	-408.86	293.23	1.82	
2401.00	24.900	141.500	2307.44	541.16	-438.09	317.97	1.62	
2492.00	24.400	144.700	2390.15	579.10	-468.43	340.76	1.57	
2583.00	24.800	142.900	2472.89	616.96	-498.99	363.13	0.93	
2673.00	24.700	141.900	2554.63	654.64	-528.84	386.12	0.48	
2764.00	24.500	139.800	2637.37	692.50	-558.22	410.03	0.99	
2855.00	24.400	136.200	2720.21	730.03	-586.20	435.22	1.64	
2946.00	24.400	142.600	2803.10	767.51	-614.70	459.65	2.90	
3037.00	24.300	146.100	2886.01	805.00	-645.18	481.51	1.59	
3127.00	23.900	145.000	2968.16	841.70	-675.48	502.30	0.67	
3218.00	25.100	146.800	3050.97	879.37	-706.73	523.44	1.55	
3309.00	24.900	145.400	3133.45	917.75	-738.65	544.89	0.69	
3400.00	25.200	144.700	3215.89	956.24	-770.23	566.96	0.46	
3491.00	24.400	145.000	3298.49	994.38	-801.44	588.94	0.89	
3581.00	24.700	139.400	3380.37	1031.74	-830.95	611.84	2.61	
3672.00	24.200	138.700	3463.21	1069.33	-859.40	636.53	0.64	
3763.00	24.200	140.800	3546.21	1106.58	-887.87	660.62	0.95	
3854.00	23.000	140.800	3629.60	1142.99	-916.10	683.65	1.32	
3945.00	22.500	142.200	3713.52	1178.18	-943.63	705.56	0.81	



Actual Wellpath Report

PINNACLE 40-2 AWP

Page 3 of 5



INTEQ

REFERENCE WELLPATH IDENTIFICATION

Operator	KERR MCGEE OIL & GAS ONSHORE LP	Slot	SLOT#31 PINNACLE 40-2 (1097'FNL & 1194'FEL)
Area	COLORADO	Well	PINNACLE 40-2
Field	WELD COUNTY (KERR MCGEE)	Wellbore	PINNACLE 40-2 AWB
Facility	SEC.02-T1N-R68W		

WELLPATH DATA (89 stations)

MD [ft]	Inclination [°]	Azimuth [°]	TVD [ft]	Vert Sect [ft]	North [ft]	East [ft]	DLS [°/100ft]	Comments
4035.00	22.400	140.500	3796.70	1212.53	-970.47	727.02	0.73	
4126.00	23.500	142.600	3880.50	1248.00	-998.27	749.07	1.51	
4217.00	23.600	140.500	3963.92	1284.35	-1026.74	771.68	0.93	
4307.00	24.200	145.000	4046.21	1320.79	-1055.75	793.72	2.13	
4398.00	24.400	145.400	4129.15	1358.20	-1086.50	815.09	0.28	
4489.00	25.600	142.900	4211.62	1396.63	-1117.65	837.62	1.76	
4580.00	24.900	139.100	4293.93	1435.42	-1147.82	862.03	1.94	
4671.00	23.700	140.500	4376.87	1472.82	-1176.41	886.21	1.46	
4761.00	21.900	144.300	4459.84	1507.67	-1204.00	907.51	2.58	
4852.00	20.800	139.400	4544.60	1540.77	-1230.05	927.93	2.30	
4943.00	22.400	138.000	4629.21	1574.19	-1255.21	950.05	1.85	
5034.00	23.400	141.900	4713.04	1609.55	-1282.32	972.80	2.00	
5124.00	22.600	143.600	4795.88	1644.71	-1310.30	994.09	1.16	
5215.00	19.600	140.800	4880.77	1677.45	-1336.21	1014.12	3.48	
5306.00	18.400	139.800	4966.82	1707.06	-1359.01	1033.04	1.37	
5397.00	17.100	139.800	5053.48	1734.77	-1380.20	1050.94	1.43	
5487.00	15.600	140.100	5139.84	1760.07	-1399.59	1067.25	1.67	
5578.00	14.300	140.100	5227.76	1783.53	-1417.60	1082.30	1.43	
5669.00	11.600	137.300	5316.44	1803.87	-1432.95	1095.72	3.05	
5760.00	10.500	134.500	5405.75	1821.19	-1445.48	1107.84	1.34	
5851.00	8.400	137.300	5495.51	1836.02	-1456.18	1118.26	2.36	
5941.00	8.100	136.600	5584.58	1848.87	-1465.62	1127.08	0.35	
6032.00	6.700	135.200	5674.82	1860.51	-1474.04	1135.22	1.55	
6123.00	5.500	142.900	5765.30	1870.13	-1481.29	1141.59	1.59	
6214.00	4.200	147.800	5855.97	1877.81	-1487.59	1146.00	1.50	
6305.00	2.300	137.600	5946.82	1882.95	-1491.76	1149.01	2.17	
6395.00	1.500	108.800	6036.78	1885.73	-1493.47	1151.34	1.36	
6532.00	1.100	110.200	6173.74	1888.33	-1494.50	1154.27	0.29	
6668.00	0.700	97.200	6309.72	1890.02	-1495.06	1156.32	0.33	
6804.00	0.300	52.000	6445.72	1890.60	-1494.94	1157.43	0.39	
6940.00	0.400	47.000	6581.72	1890.55	-1494.40	1158.05	0.08	
7076.00	0.600	59.100	6717.71	1890.58	-1493.71	1159.01	0.17	
7213.00	0.700	32.900	6854.70	1890.38	-1492.64	1160.08	0.23	
7349.00	0.500	31.100	6990.69	1889.88	-1491.43	1160.84	0.15	
7485.00	0.700	355.300	7126.69	1888.96	-1490.10	1161.08	0.31	
7621.00	0.900	331.400	7262.67	1887.21	-1488.33	1160.50	0.28	
7757.00	1.100	335.200	7398.65	1884.88	-1486.21	1159.44	0.15	
7893.00	0.400	45.500	7534.64	1883.55	-1484.69	1159.23	0.76	
8030.00	0.800	80.300	7671.64	1883.93	-1484.19	1160.52	0.38	
8166.00	0.800	80.400	7807.62	1884.82	-1483.87	1162.39	0.00	
8302.00	0.800	70.100	7943.61	1885.55	-1483.39	1164.22	0.11	
8438.00	0.300	62.100	8079.60	1885.89	-1482.90	1165.42	0.37	
8602.00	0.300	138.700	8243.60	1886.39	-1483.02	1166.09	0.23	LAST BHI MWD SURVEY
8652.00	0.300	138.700	8293.60	1886.65	-1483.22	1166.26	0.00	PROJECTION TO BIT



Actual Wellpath Report

PINNACLE 40-2 AWP

Page 4 of 5



INTEQ

REFERENCE WELLPATH IDENTIFICATION

Operator	KERR MCGEE OIL & GAS ONSHORE LP	Slot	SLOT#31 PINNACLE 40-2 (1097'FNL & 1194'FEL)
Area	COLORADO	Well	PINNACLE 40-2
Field	WELD COUNTY (KERR MCGEE)	Wellbore	PINNACLE 40-2 AWB
Facility	SEC.02-T1N-R68W		

HOLE & CASING SECTIONS Ref Wellbore: PINNACLE 40-2 AWB Ref Wellpath: PINNACLE 40-2 AWP

String/Diameter	Start MD [ft]	End MD [ft]	Interval [ft]	Start TVD [ft]	End TVD [ft]	Start N/S [ft]	Start E/W [ft]	End N/S [ft]	End E/W [ft]
12.25in Open Hole	15.00	937.00	922.00	15.00	933.84	0.00	0.00	-49.05	25.39
8.625in Casing Surface	15.00	926.00	911.00	15.00	922.98	0.00	0.00	-47.54	24.50
7.875in Open Hole	926.00	8652.00	7726.00	922.98	8293.60	-47.54	24.50	-1483.22	1166.26

TARGETS

Name	MD [ft]	TVD [ft]	North [ft]	East [ft]	Grid East [srv ft]	Grid North [srv ft]	Latitude	Longitude	Shape
PINNACLE 40-2 BHL ON PLAT (2600'FNL & 44'FEL, REV-1)		6000.00	-1496.49	1150.12	3150726.59	1272661.94	40°04'50.128"N	104°57'40.846"W	point
PINNACLE 40-2 HARDLINE 50'E OF GEO TARGET		6000.00	-1496.49	1194.12	3150770.59	1272662.21	40°04'50.128"N	104°57'40.280"W	point
PINNACLE 40-2 GEO TARGET 50' RADIUS (2600'FNL & 50'FEL, REV-2)		6000.00	-1496.49	1144.12	3150720.60	1272661.91	40°04'50.128"N	104°57'40.923"W	circle

WELLPATH COMPOSITION Ref Wellbore: PINNACLE 40-2 AWB Ref Wellpath: PINNACLE 40-2 AWP

Start MD [ft]	End MD [ft]	Positional Uncertainty Model	Log Name/Comment	Wellbore
15.00	881.00	NaviTrak (Standard)	BHI NAVITRAK 12.25 HOLE <150-881>	PINNACLE 40-2 AWB
881.00	8602.00	NaviTrak (Standard)	BHI NAVITRAK 7.875 HOLE <949-8602>	PINNACLE 40-2 AWB
8602.00	8652.00	Blind Drilling (std)	Projection to bit	PINNACLE 40-2 AWB



Actual Wellpath Report

PINNACLE 40-2 AWP

Page 5 of 5



INTEQ

REFERENCE WELLPATH IDENTIFICATION

Operator	KERR MCGEE OIL & GAS ONSHORE LP	Slot	SLOT#31 PINNACLE 40-2 (1097'FNL & 1194'FEL)
Area	COLORADO	Well	PINNACLE 40-2
Field	WELD COUNTY (KERR MCGEE)	Wellbore	PINNACLE 40-2 AWB
Facility	SEC.02-T1N-R68W		

WELLPATH COMMENTS

MD [ft]	Inclination [°]	Azimuth [°]	TVD [ft]	Comment
8602.00	0.300	138.700	8243.60	LAST BHI MWD SURVEY
8652.00	0.300	138.700	8293.60	PROJECTION TO BIT