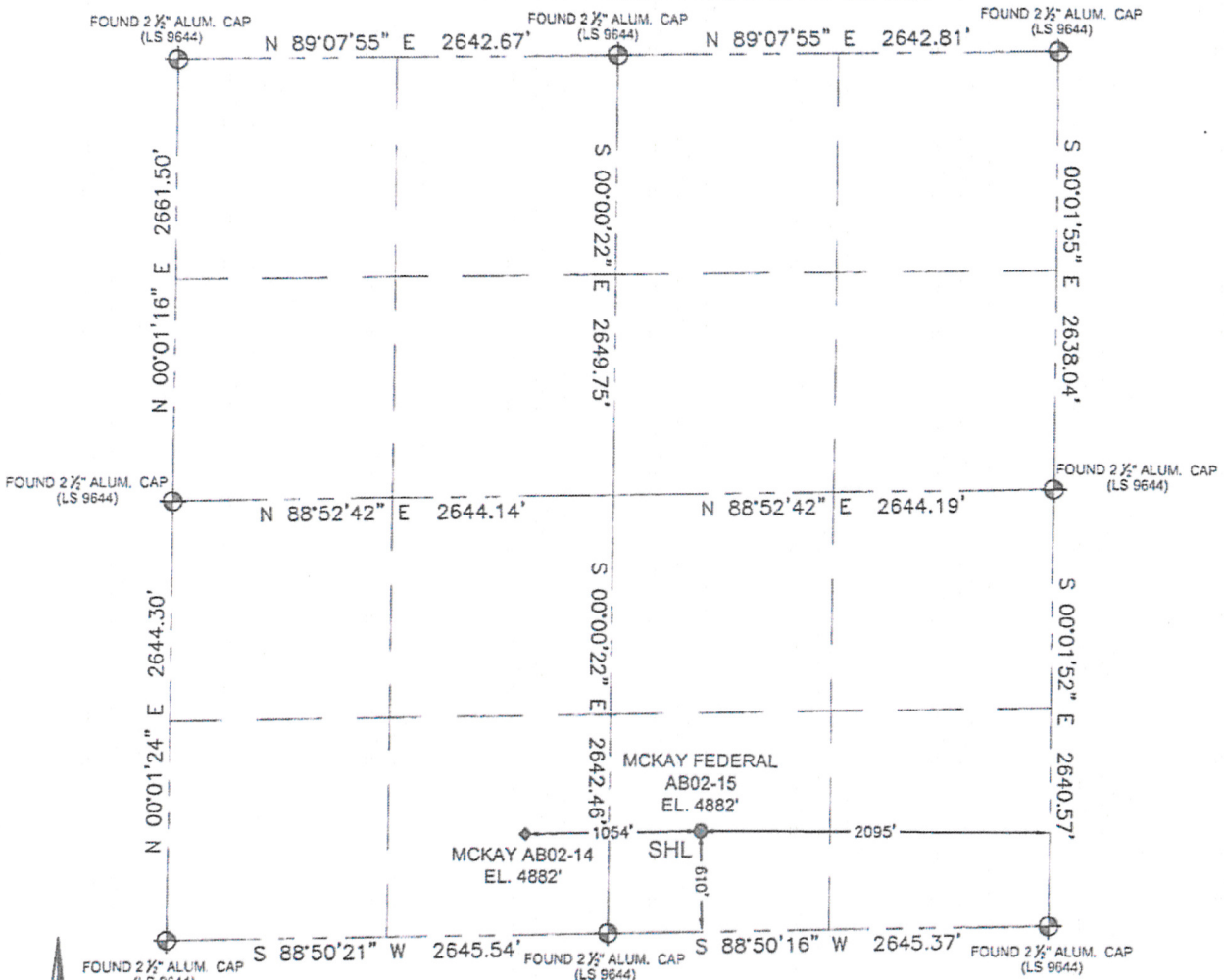


PFS PETROLEUM FIELD SERVICES, LLC 1801 W. 13TH AVE. DENVER, CO 80204

## WELL LOCATION CERTIFICATE

THIS MAP DOES NOT REPRESENT A BOUNDARY SURVEY

SECTION: 2  
TOWNSHIP: 7N  
RANGE: 64W



In accordance with a request from Erik Van Decar with Noble Energy Inc. Petroleum Field Services, LLC has determined the surface location of the MCKAY FEDERAL AB02-15 to be 610' from the SOUTH line and 2095' from the EAST line as measured at right angles from the section line of Section 2, Township 7 North, Range 64 West of the Sixth Principal Meridian, County of Weld, State of Colorado.

I hereby state that this Well Location Certificate was prepared by me, or under my direct supervision, that the fieldwork was completed on 6/24/11 for and on behalf of Noble Energy Inc., that this is not a Land Survey Plat or an Improvement Survey Plat, and that it is not to be relied upon for establishment of fence, building, or other future improvement lines.

SURFACE LOCATION:  
LATITUDE: 40.58663°N  
LONGITUDE: 104.51421°W  
PDOP: 1.5  
ELEV: 4882'  
1/4 1/4 SW 1/4 SE 1/4  
NEAREST PROPERTY LINE: 550' West

0 500 1000  
SCALE: 1"=1000'

### Note:

- 1) Bearings shown are Grid Bearings of the Colorado State Plane Coordinate System, North Zone, North American Datum 1983/2007. The lineal dimensions as shown herein are grid distances based upon the "U.S. Survey Foot."
- 2) Ground elevations are based on an observed GPS elevation (NAVD 1988 DATUM).
- 3) NEAREST EXISTING WELL: MCKAY AB02-14 1054' WEST
- 4) IMPROVEMENTS: See LOCATION DRAWING exhibit for all visible improvements within 400' of disturbed area.
- 5) SURFACE USE: RANGELAND
- 6) INSTRUMENT OPERATOR: OWEN MCKEE

### Note:

According to Colorado law, you must commence any legal action based upon any defect in this W.L.C. within three years after you first discover such defect. In no event, may any action based upon any defect in this survey be commenced more than ten years after the date of this certification shown hereon. (13-80-105 C.R.S.)

### LEGEND

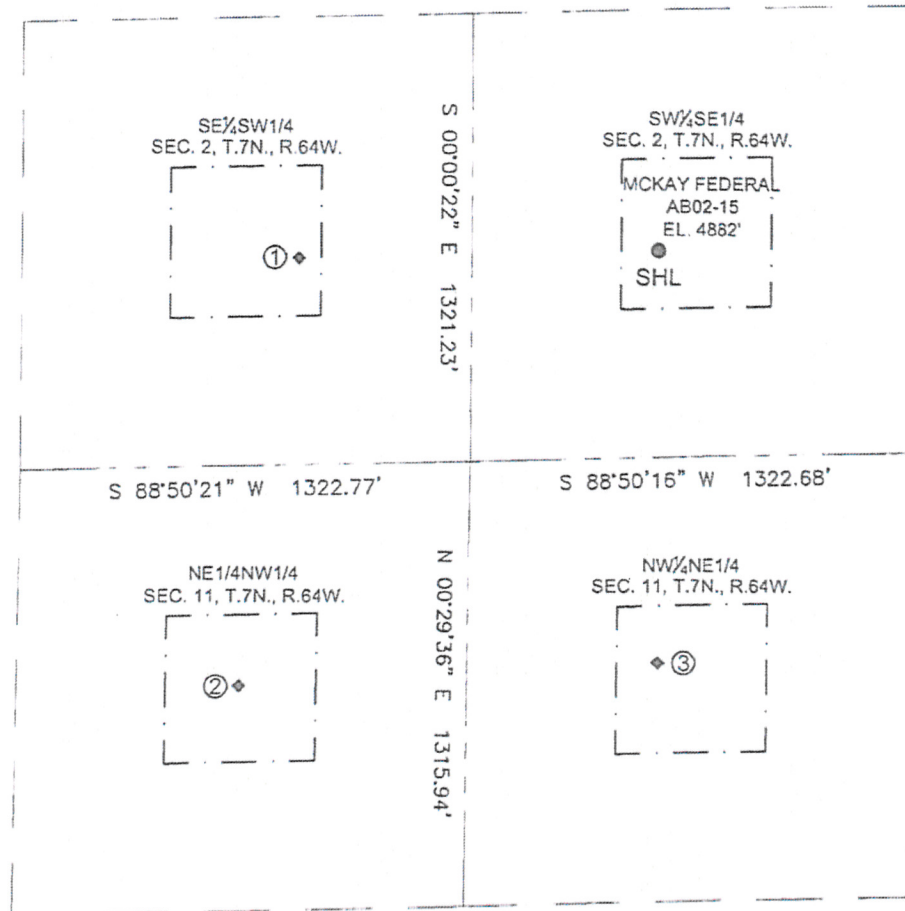
- = FOUND MONUMENT
- = PROPOSED WELL
- ⊙ = BOTTOM HOLE
- ◆ = EXISTING WELL



MARK A. HALL, PLS 36073  
COLORADO LICENSED PROFESSIONAL LAND SURVEYOR  
FOR AND ON BEHALF OF P.F.S., LLC

# SITE SKETCH

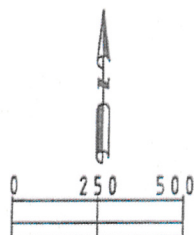
SECTION: 2  
TOWNSHIP: 7N  
RANGE: 64W



- |   |  |  |
|---|--|--|
| ① MCKAY AB02-14<br>SESW<br>609' FSL<br>2140' FWL<br>LAT -40.59660°N<br>LONG -104.51801°W<br>PDOP:1.5<br>ELEV: 4894' | ② SHABLE USX AB11-03<br>NENW<br>650' FNL<br>1979' FWL<br>LAT -40.59314°N<br>LONG -104.51867°W<br>PDOP:1.5<br>ELEV: 4877' | ③ SHABLE USX AB11-02<br>NWNE<br>610' FNL<br>2086' FEL<br>LAT -40.59328°N<br>LONG -104.51424°W<br>PDOP:1.5<br>ELEV: 4882' |
|---|--|--|

## LEGEND

- = PROPOSED WELL
- ⊕ = BOTTOM HOLE
- ◆ = EXISTING WELL



SCALE: 1"=500'