
NOBLE ENERGY INC E-BUSINESS

**BM 34-43B
GRAND VALLEY
Garfield County , Colorado**

Cement Surface Casing **23-Dec-2010**

Post Job Summary

The Road to Excellence Starts with Safety

Sold To #: 345242	Ship To #: 2812541	Quote #:	Sales Order #: 7785368
Customer: NOBLE ENERGY INC E-BUSINESS	Customer Rep: WILKERSON, KENNEY		
Well Name: BM	Well #: 34-43B	API/UWI #:	
Field: GRAND VALLEY	City (SAP):	County/Parish: Garfield	State: Colorado
Contractor: H&P Drilling	Rig/Platform Name/Num: H&P 322		
Job Purpose: Cement Surface Casing			
Well Type: Development Well	Job Type: Cement Surface Casing		
Sales Person: METLI, MARSHALL	Srv Supervisor: TRIPLETT, MICHEAL	MBU ID Emp #:	447908

Job Personnel

HES Emp Name	Exp Hrs	Emp #	HES Emp Name	Exp Hrs	Emp #	HES Emp Name	Exp Hrs	Emp #
ANDREWS, ANTHONY Michael	14	321604	ARNOLD, EDWARD John	8	439784	BEAGLEY, JEFFREY Allen	14	476070
RAMSEY, STANTON Michael	22	477609	TRIPLETT, MICHEAL Anthony	22	447908			

Equipment

HES Unit #	Distance-1 way	HES Unit #	Distance-1 way	HES Unit #	Distance-1 way	HES Unit #	Distance-1 way
10011429	60 mile	10025118	60 mile	10551730C	60 mile	10741259	60 mile
10829465	60 mile	10973571	60 mile				

Job Hours

Date	On Location Hours	Operating Hours	Date	On Location Hours	Operating Hours	Date	On Location Hours	Operating Hours
12/22/10	6.5	2.5	12/23/10	15.5	4			

TOTAL Total is the sum of each column separately

Job

Formation Name	Top	Bottom	Called Out	Date	Time	Time Zone
Formation Depth (MD)			On Location	22 - Dec - 2010	17:30	MST
Form Type	BHST		Job Started	22 - Dec - 2010	22:16	MST
Job depth MD	3338. ft	Job Depth TVD	3338. ft	Job Completed	23 - Dec - 2010	13:05
Water Depth		Wk Ht Above Floor	0. ft	Departed Loc	23 - Dec - 2010	14:30
Perforation Depth (MD)	From	To				

Well Data

Description	New / Used	Max pressure psig	Size in	ID in	Weight lbm/ft	Thread	Grade	Top MD ft	Bottom MD ft	Top TVD ft	Bottom TVD ft
-------------	------------	-------------------	---------	-------	---------------	--------	-------	-----------	--------------	------------	---------------

Sales/Rental/3rd Party (HES)

Description	Qty	Qty uom	Depth	Supplier
PLUG,CMTG,TOP,9 5/8,HWE,8.16 MIN/9.06 MA	1	EA		
R/A DENSOMETER W/CHART RECORDER,/JOB,ZI	1	JOB		
PORT. DAS W/CEMWIN;ACQUIRE W/HES, ZI	1	JOB		
ADC (AUTO DENSITY CTRL) SYS, /JOB,ZI	1	JOB		

Tools and Accessories

Type	Size	Qty	Make	Depth	Type	Size	Qty	Make	Depth	Type	Size	Qty	Make
Guide Shoe					Packer					Top Plug	9.625	1	HES
Float Shoe					Bridge Plug					Bottom Plug			
Float Collar					Retainer					SSR plug set			
Insert Float										Plug Container			
Stage Tool										Centralizers			

Miscellaneous Materials

Gelling Agt	Conc	Surfactant	Conc	Acid Type	Qty	Conc	%
Treatment Fld	Conc	Inhibitor	Conc	Sand Type	Size	Qty	

Fluid Data

Stage/Plug #: 1

Fluid #	Stage Type	Fluid Name	Qty	Qty uom	Mixing Density lbm/gal	Yield ft ³ /sk	Mix Fluid Gal/sk	Rate bbl/min	Total Mix Fluid Gal/sk
1	Water Spacer		10.00	bbl	8.33	.0	.0	.0	
2	SUPER FLUSH - XLC	SUPERFLUSH-XLC - SBM (549694)	20.00	bbl	.	.0	.0	.0	
3	Water Spacer		10.00	bbl	.	.0	.0	.0	
4	Lead Cement	VERSACEM (TM) SYSTEM (452010)	1089.0	sacks	12.3	2.3	11.68		11.68
	11.68 Gal	FRESH WATER							
5	Tail Cement	VERSACEM (TM) SYSTEM (452010)	194.0	sacks	12.6	2.14	10.47		10.47
	10.47 Gal	FRESH WATER							
6	Displacement		252.00	bbl	8.33	.0	.0	.0	
Calculated Values		Pressures		Volumes					
Displacement	252.3	Shut In: Instant		Lost Returns	110	Cement Slurry	580	Pad	
Top Of Cement	SURFACE	5 Min		Cement Returns	3	Actual Displacement	252.3	Treatment	
Frac Gradient		15 Min		Spacers	5	Load and Breakdown		Total Job	830
Rates									
Circulating	8	Mixing	4	Displacement	5	Avg. Job	4.5		
Cement Left In Pipe	Amount	42.92 ft	Reason	Shoe Joint					
Frac Ring # 1 @	ID	Frac ring # 2 @	ID	Frac Ring # 3 @	ID	Frac Ring # 4 @	ID		
The Information Stated Herein Is Correct				Customer Representative Signature					

The Road to Excellence Starts with Safety

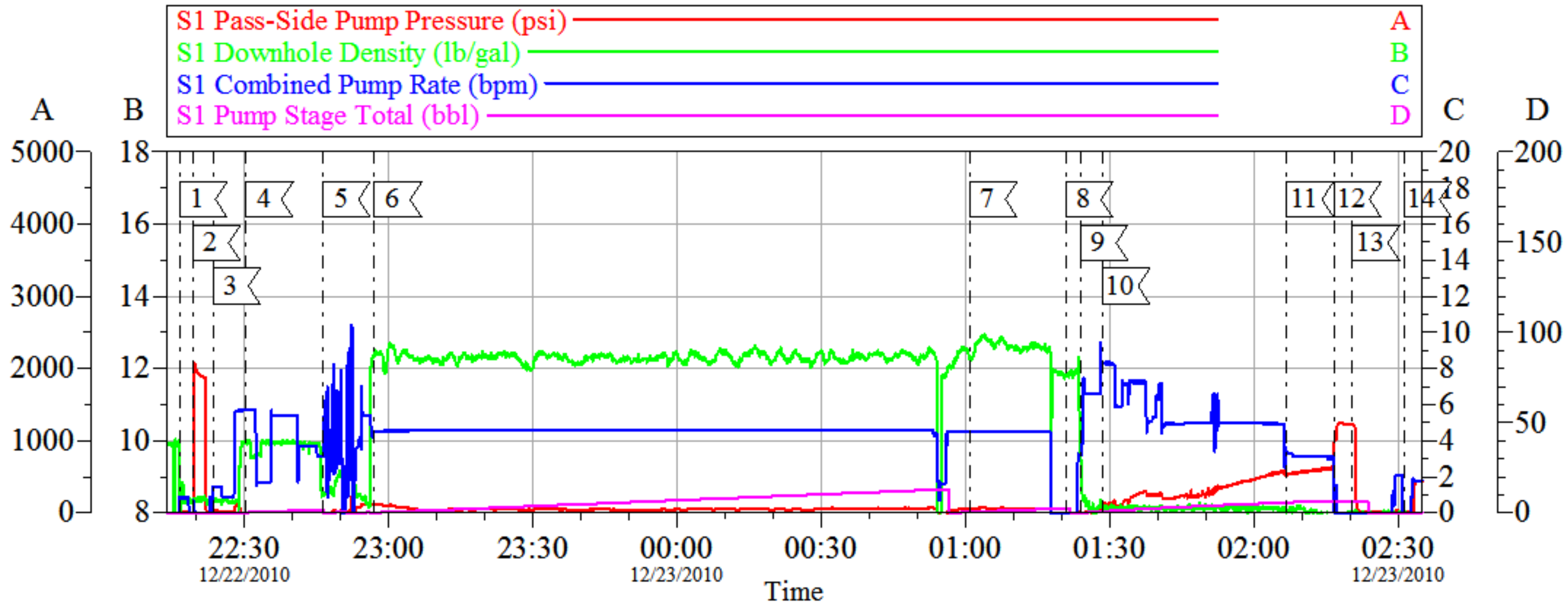
Sold To #: 345242	Ship To #: 2812541	Quote #:	Sales Order #: 7785368
Customer: NOBLE ENERGY INC E-BUSINESS		Customer Rep: WILKERSON, KENNEY	
Well Name: BM	Well #: 34-43B	API/UWI #:	
Field: GRAND VALLEY	City (SAP):	County/Parish: Garfield	State: Colorado
Legal Description:			
Lat:		Long:	
Contractor: H&P Drilling		Rig/Platform Name/Num: H&P 322	
Job Purpose: Cement Surface Casing			Ticket Amount:
Well Type: Development Well		Job Type: Cement Surface Casing	
Sales Person: METLI, MARSHALL		Srv Supervisor: TRIPLETT, MICHEAL	MBU ID Emp #: 447908

Activity Description	Date/Time	Cht #	Rate bbl/min	Volume bbl		Pressure psig		Comments
				Stage	Total	Tubing	Casing	
Call Out	12/22/2010 11:00							
Pre-Convoy Safety Meeting	12/22/2010 14:15							
Crew Leave Yard	12/22/2010 14:30							
Arrive At Loc	12/22/2010 17:30							
Assessment Of Location Safety Meeting	12/22/2010 17:45							
Other	12/22/2010 18:00							SPOT EQUIPMENT
Pre-Rig Up Safety Meeting	12/22/2010 18:30							
Rig-Up Equipment	12/22/2010 18:45							
Pre-Job Safety Meeting	12/22/2010 19:50							
Start Job	12/22/2010 22:16							TD:3338, TP:3307, SJ:42.92, MW:9.1, CASING: 9.625 40#, OH: 14.75, OFFLINE CEMENT JOB
Test Lines	12/22/2010 22:19		1	2			130.0	
Pump Spacer 2	12/22/2010 22:23		5.5	10			50.0	FRESH WATER
Pump Spacer	12/22/2010 22:30		5.5	20			20.0	SUPERFLUSH
Pump Spacer 1	12/22/2010 22:46		5.5	10			30.0	FRESH WATER, HAD TO SHUT DOWN TO RE-PRIME PUMPS.
Pump Lead Cement	12/22/2010 22:57		4.5	446.1			325	1089 SACKS MIXED @ 12.3, 2.3 YIELD, 11.68GAL/SACK

Activity Description	Date/Time	Cht #	Rate bbl/min	Volume bbl		Pressure psig		Comments
				Stage	Total	Tubing	Casing	
Pump Tail Cement	12/23/2010 01:00		4.5	73.8			370	194 SACKS MIXED @ 12.6, 2.14 YIELD, 10.47 GAL/SACK
Shutdown	12/23/2010 01:20							
Drop Top Plug	12/23/2010 01:23							
Pump Displacement	12/23/2010 01:28		5	252.3			400.0	
Slow Rate	12/23/2010 02:06		3	242.3			500.0	SLOWED RATE LAST 10BBLS OF DISPLACEMENT
Bump Plug	12/23/2010 02:16		3	252.3			625.0	BUMP PLUG AND WENT 600PSI OVER TO 1235PSI
Check Floats	12/23/2010 02:20							FLOATS HELD
End Job	12/23/2010 02:31							HAD NO CIRCULATION TIL 30 BBLS OF TAIL GONE. LOST CIRCULATION WITH 80BBLS OF DISPLACEMENT AWAY.
Wait on HES Materials to Arrive - Start Time	12/23/2010 02:32							WAITING ON TOPOUT TO GET TO LOCATION
Wait on HES Materials to Arrive - End Time	12/23/2010 07:30							
Start Job	12/23/2010 09:15							START TOPOUT JOB #1
Pump Spacer 1	12/23/2010 09:16		1.5	5			50.0	FRESH WATER
Pump Cement	12/23/2010 09:19		1.5	30.7			40.0	150 SACKS MIXED @ 15.8, 1.15 YIELD, 5.0 GAL/SACK
Pump Displacement	12/23/2010 09:39		1.5	3			20.0	PUMPED FRESH WATER TO CLEANLINES AND 2" TUBING
End Job	12/23/2010 09:45							DIDN'T CHART DUE TO COMPUTER TURNING OFF DURING JOB
Other	12/23/2010 09:46							WAITING FOR TOPOUT TO SETUP TO START TOPOUT JOB #2
Start Job	12/23/2010 12:35							START TOPOUT JOB #2

Pump Spacer	12/23/2010 12:36		1.5	5			50.0	FRESHWATER
Activity Description	Date/Time	Cht #	Rate bbl/ min	Volume bbl		Pressure psig		Comments
				Stage	Total	Tubing	Casing	
Pump Cement	12/23/2010 12:43		1.5	15			65.0	75 SACKS MIXED @15.8, 1.15 YIELD, 5 GAL/SACK
End Job	12/23/2010 13:05							BODY LOAD 10011429 WAS RETURED TO YARD WITH APPROX. 125 SACKS, COULD'NT DO TICKET DUE TO WEIGH BACK OF CEMENT AND TICKET CALCULATION ISSUES.
Post-Job Safety Meeting (Pre Rig-Down)	12/23/2010 13:10							
Rig-Down Equipment	12/23/2010 13:30							
Pre-Convoy Safety Meeting	12/23/2010 14:15							
Crew Leave Location	12/23/2010 14:30							THANKS FOR USING HALLIBURTON MIKE TRIPLETT AND CREW

NOBLE SURFACE BM 34-43B



Local Event Log

1	START JOB	12/22/2010 22:16:35	2	PRESSURE TEST	12/22/2010 22:19:20
3	START SPACER 1	12/22/2010 22:23:29	4	START SUPERFLUSH	12/22/2010 22:30:19
5	START SPACE 3	12/22/2010 22:46:21	6	START LEAD	12/22/2010 22:57:05
7	START TAIL	12/23/2010 01:00:56	8	SHUTDOWN	12/23/2010 01:20:50
9	DROP PLUG	12/23/2010 01:23:57	10	START DISPLACEMENT	12/23/2010 01:28:32
11	SLOW RATE	12/23/2010 02:06:46	12	BUMP PLUG	12/23/2010 02:16:40
13	CHECK FLOAT	12/23/2010 02:20:31	14	END JOB	12/23/2010 02:31:15

Customer: NOBLE
Well Description: BM 34-43B
ADC USED YES

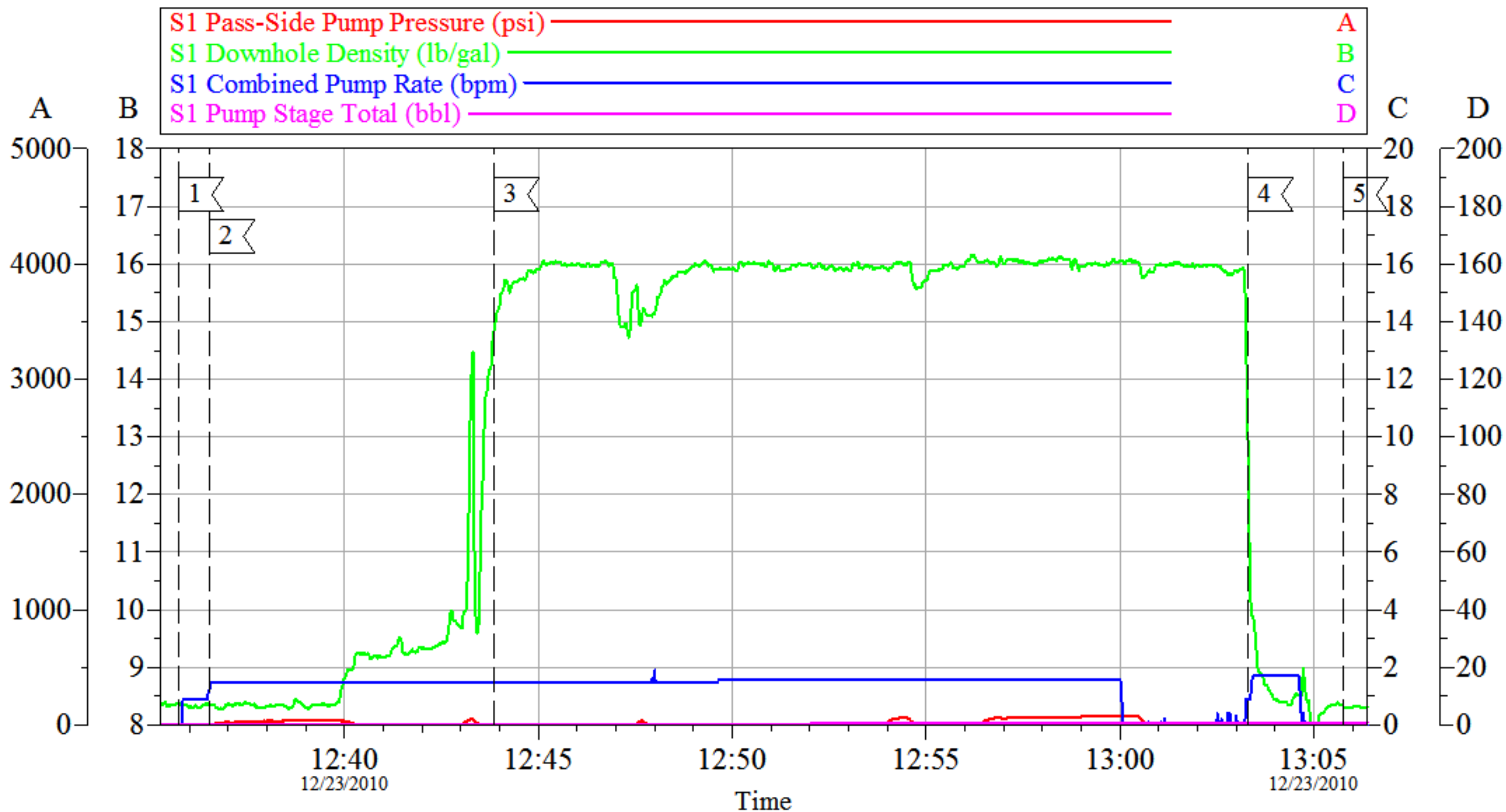
Job Date: 22-Dec-2010
JOB TYPE SURFACE
ELITE # 2

Sales Order #: 7785368
COMPANY REP C. COLLVER
OPERATER ANTHONY ANDREWS

OptiCem v6.4.9
23-Dec-10 10:18

NOBLE

SURFACE BM 34-43B TOPOUT 2



Local Event Log

1	START JOB	12:35:43	2	START SPACER	12:36:31	3	START CEMENT	12:43:51
4	SHUTDOWN	13:03:18	5	END JOB	13:05:45			

Customer: NOBLE
Well Description: BM 34-43B
ADC USED YES

Job Date: 22-Dec-2010
JOB TYPE SURFACE
ELITE # 2

Sales Order #: 7785368
COMPANY REP C. COLLVER
OPERATER ANTHONY ANDREWS

OptiCem v6.4.9
23-Dec-10 13:15