

Cement Bond Log

Company	XTO Energy Inc.		
Well	Apache Canyon 20-07		
Field	Purgatorie River		
County	Las Animas	State	Colorado
Location:	2471' FNL & 1967' FEL		Other Services
Permanent Datum	GL	Elevation	7605'
Log Measured From	G.L.		
Drilling Measured From	G.L.		
SEC 20	TWP 34S	RGE 67W	DEVI

Date	6-30-11
Run Number	one
Depth Driller	2125'
Depth Logger	2042'
Bottom Logged Interval	2040'
Top Log Interval	Surface
Open Hole Size	7 7/8
Type Fluid	water
Density / Viscosity	///
Max. Recorded Temp.	///
Estimated Cement Top	Surface
Time Well Ready	R.O.A
Time Logger on Bottom	7.45 A.M.
Equipment Number	T590
Location	Trinidad
Recorded By	C. Sineros
Witnessed By	E. Haught

Borehole Record		Tubing Record					
Run Number	Bit	From	To	Size	Weight	From	To
Casing Record							
Surface String	Size	8 5/8"	Wgt/Ft	Top	Bottom		
Prot. String							
Production String	5 1/5"						
Liner							

<<< Fold Here >>>

All interpretations are opinions based on inferences from electrical or other measurements and we cannot and do not guarantee the accuracy or correctness of any interpretation, and we shall not, except in the case of gross or willful negligence on our part, be liable or responsible for any loss, costs, damages, or expenses incurred or sustained by anyone resulting from any interpretation made by any of our officers, agents or employees. These interpretations are also subject to our general terms and conditions set out in our current Price Schedule.

Comments

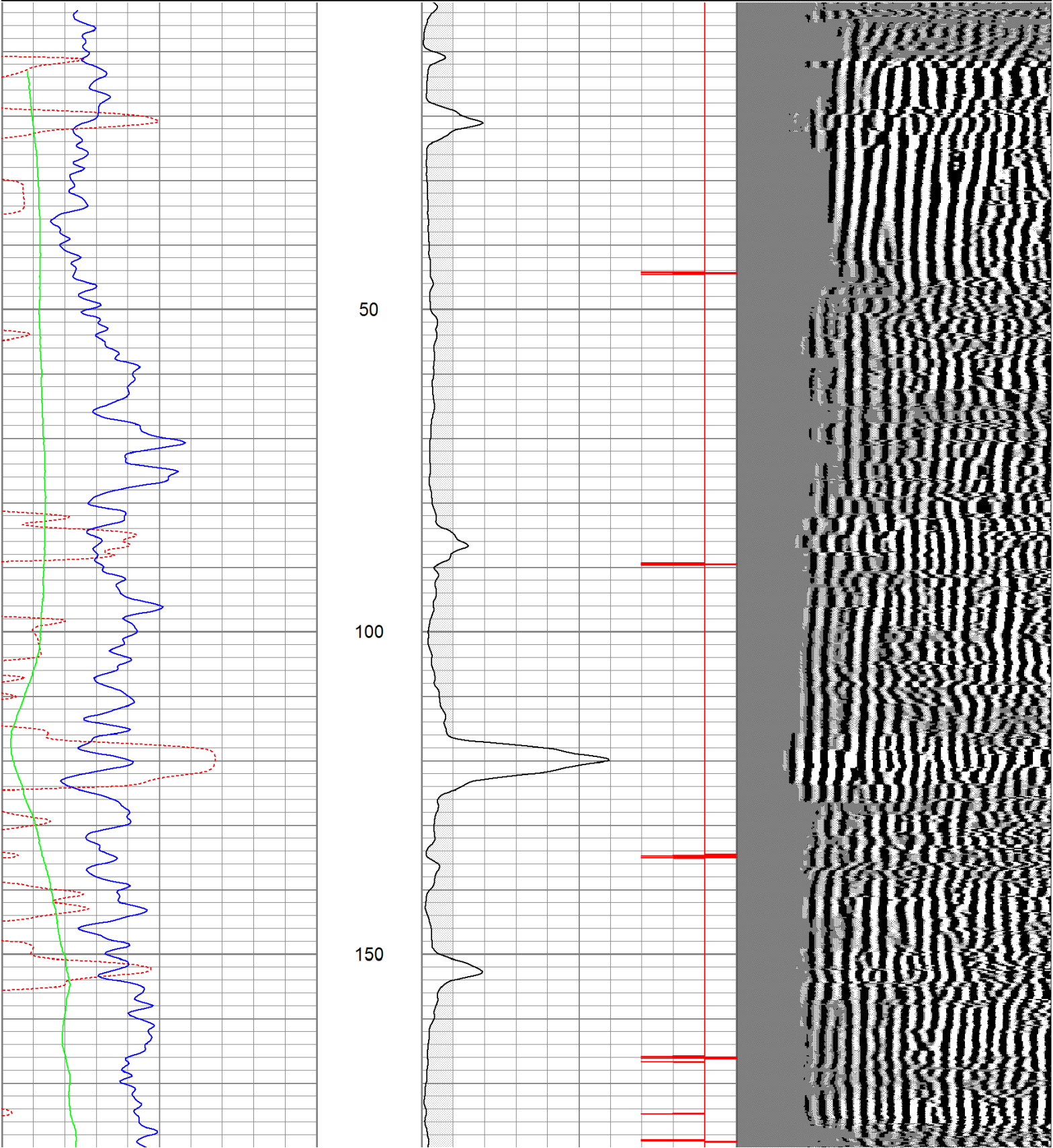
Main Pass ran under 1000 PSI.
 Directions:
 Hill Ranch to top of Little Bingham Hill, at Yellow Hill ranch gate, go right, take next right, follow road to dead end.

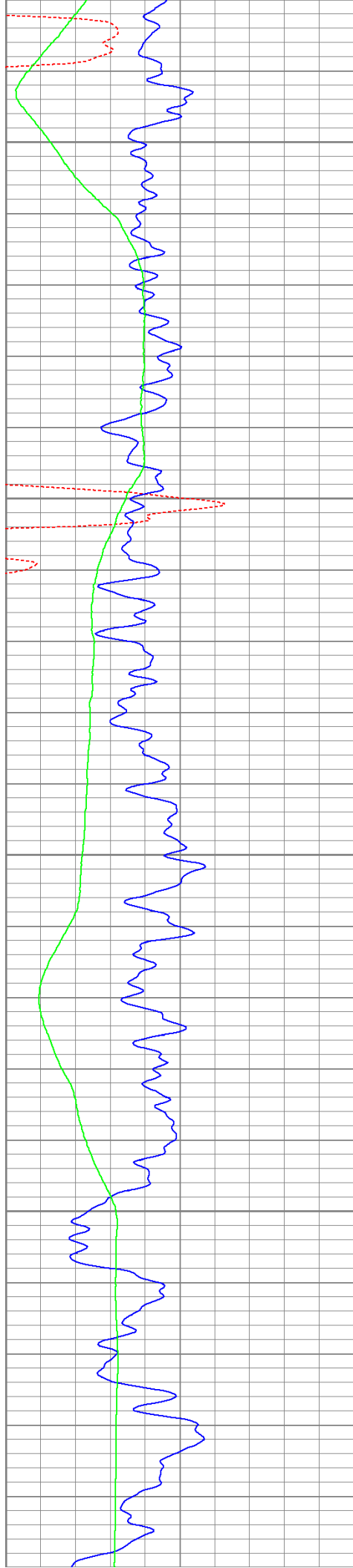
Database File: ac20-0763011b.db
Dataset Pathname: pass3.1
Presentation Format: cbldig
Dataset Creation: Thu Jun 30 09:07:15 2011 by Calc Open-Cased 110302
Charted by: Depth in Feet scaled 1:240

400	Travel Time (usec)	200
0	GR (GAPI)	200
0	DEVI (°)	10

0	Amplitude (mV)	100
9	Collar Locator	-1

200 Variable Density 1200





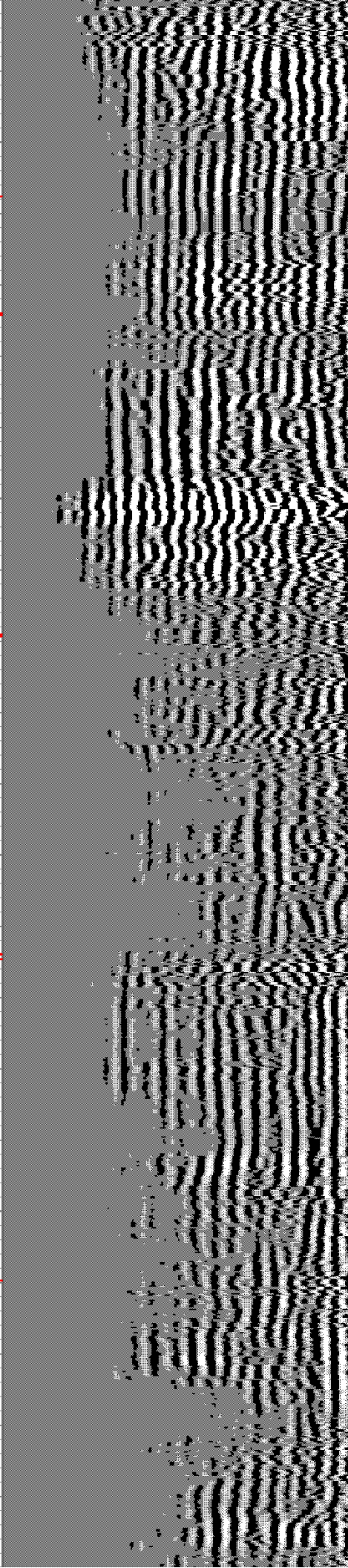
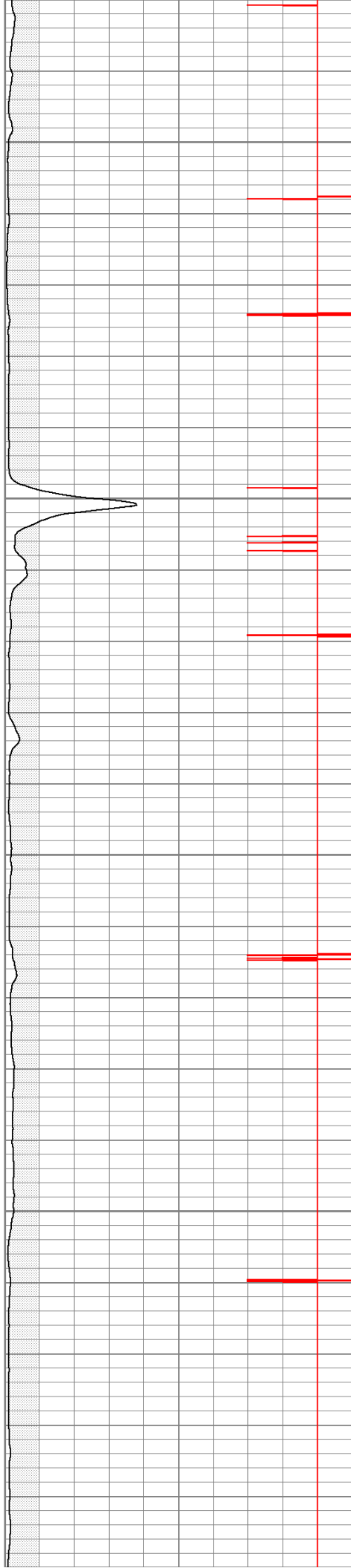
200

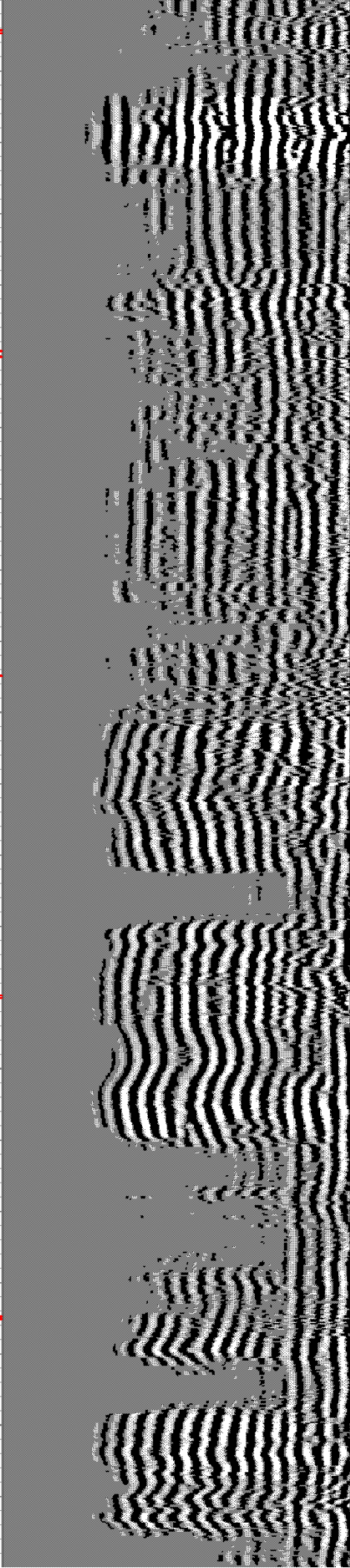
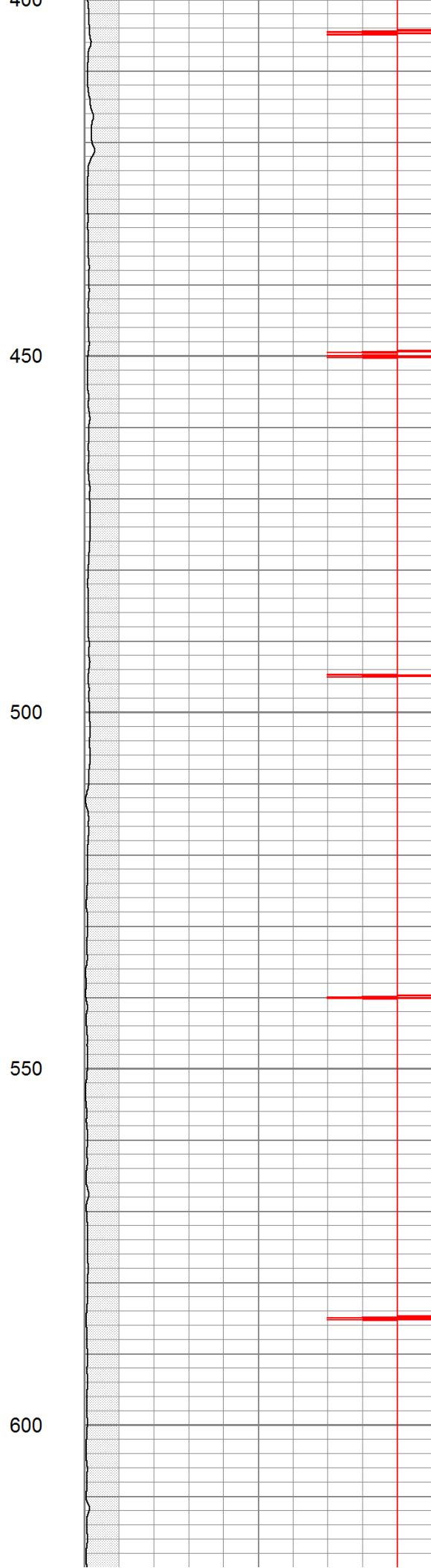
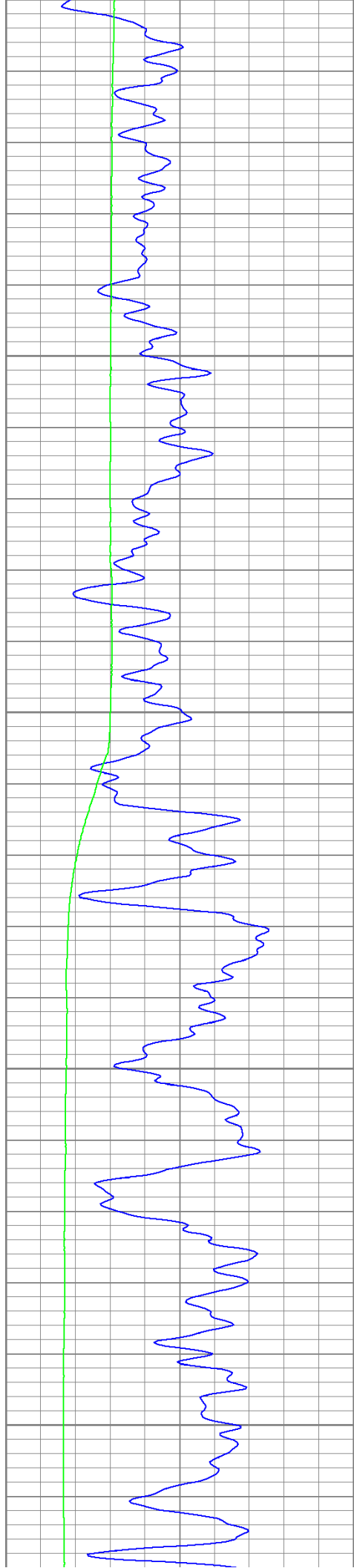
250

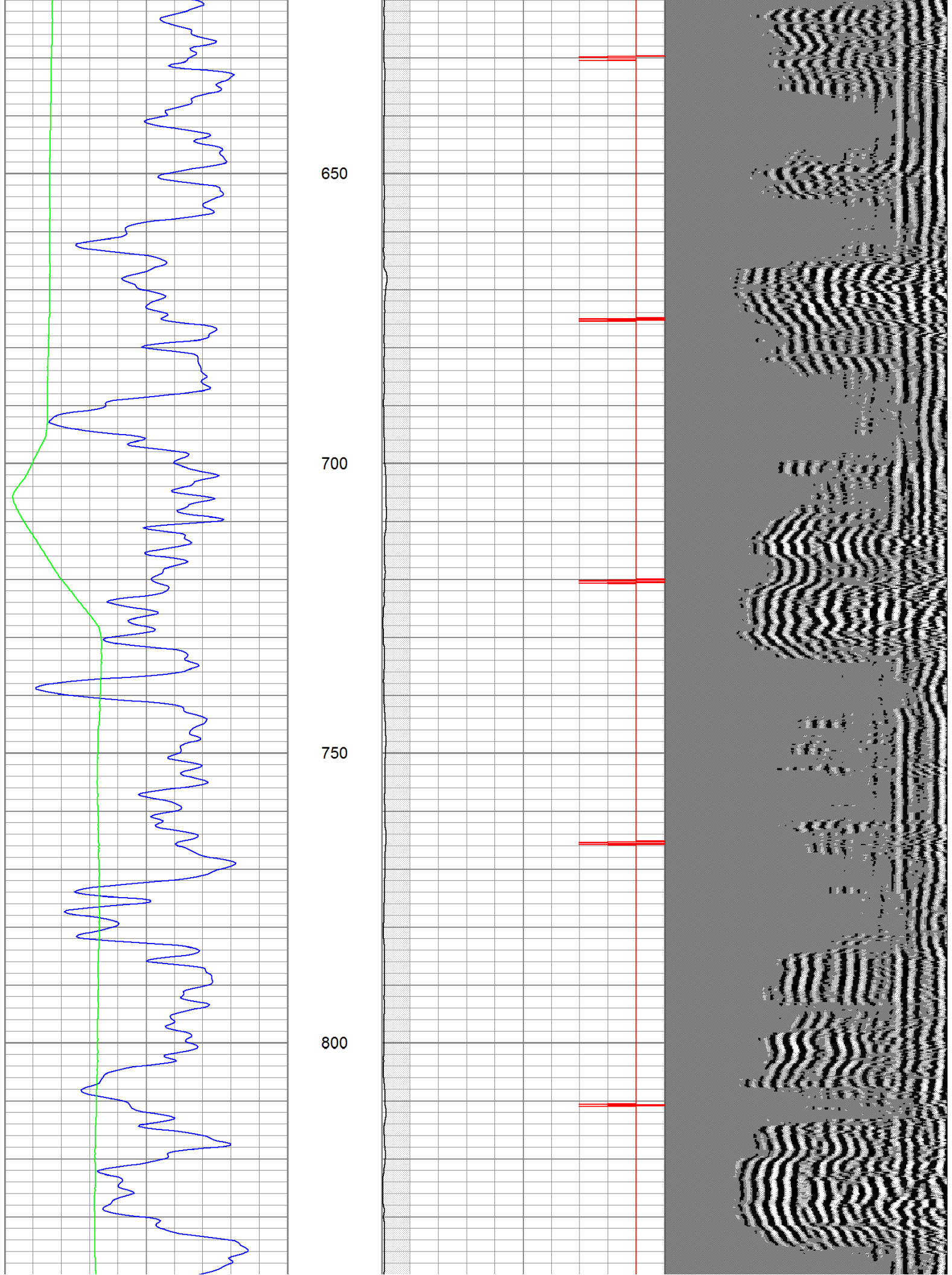
300

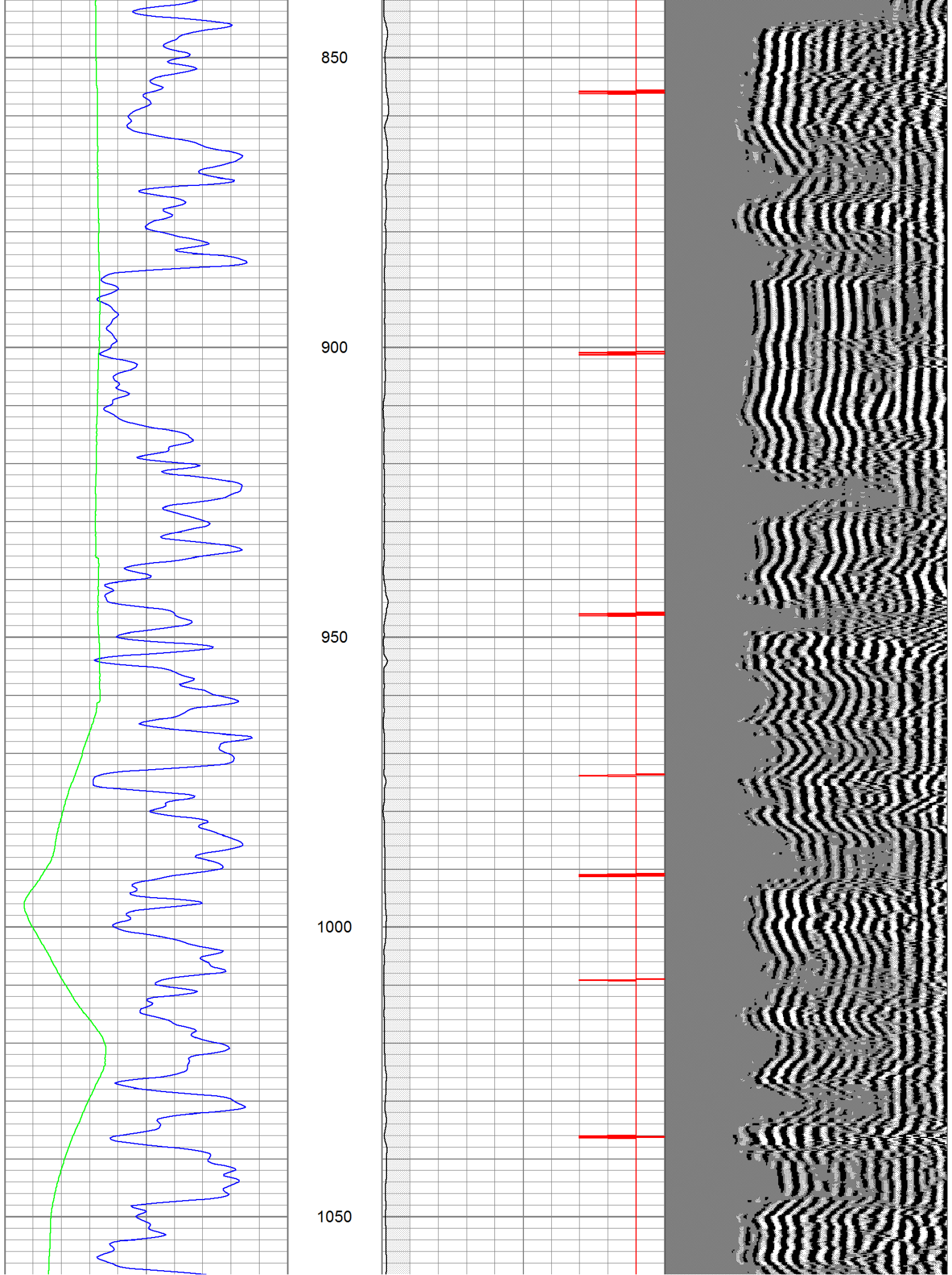
350

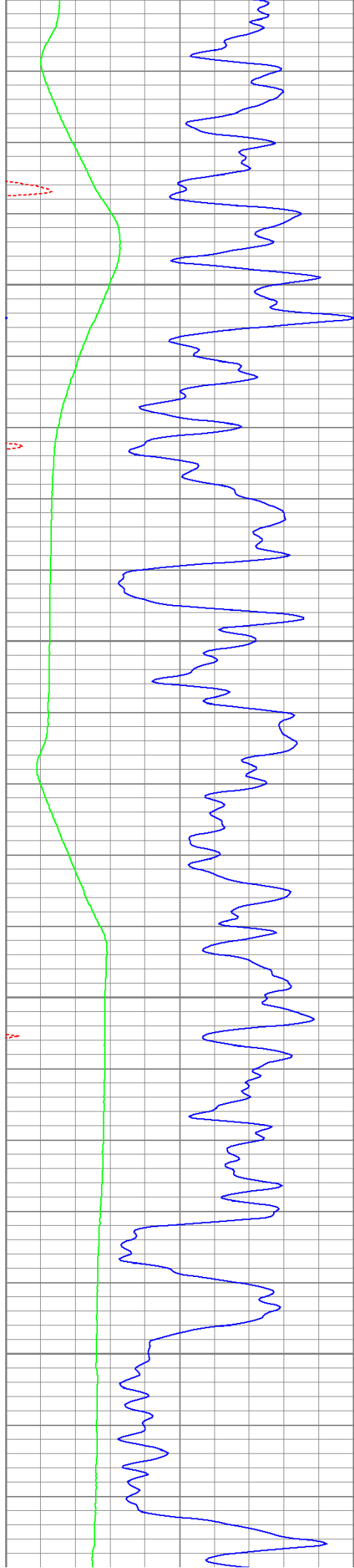
400









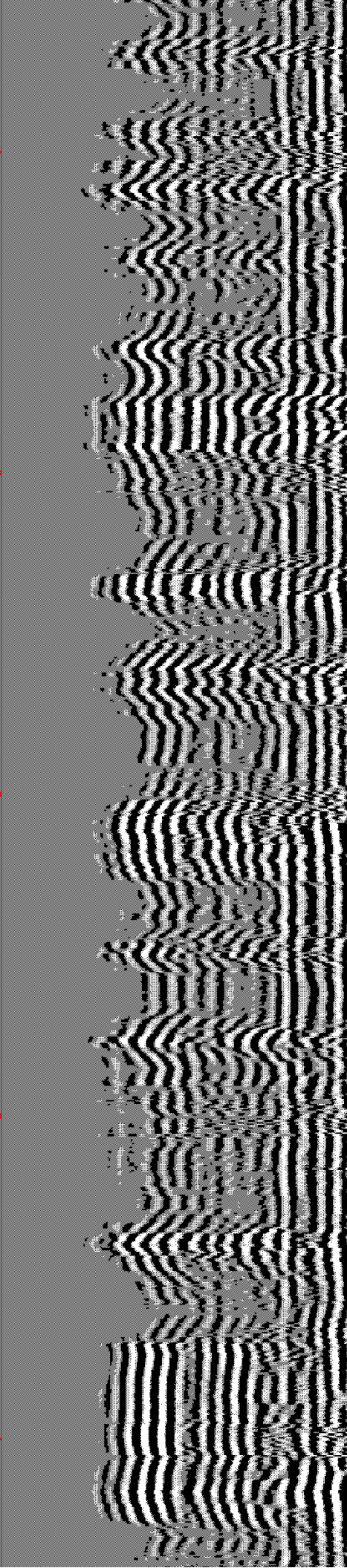
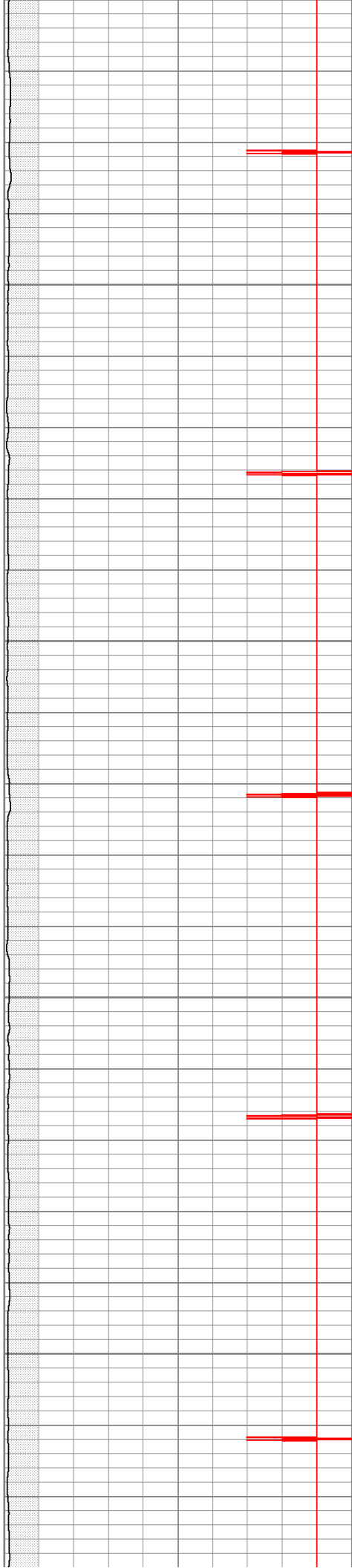


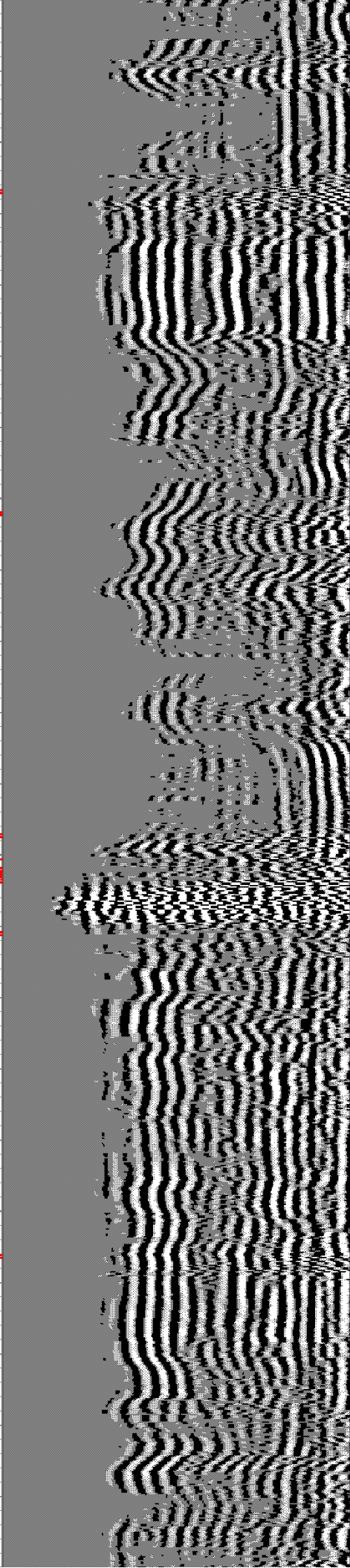
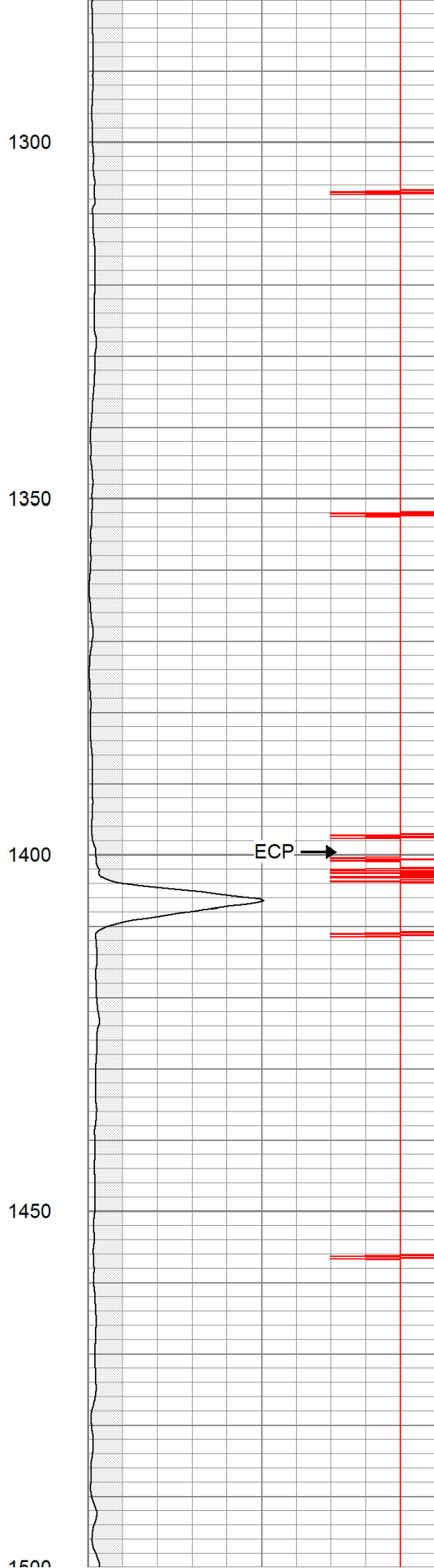
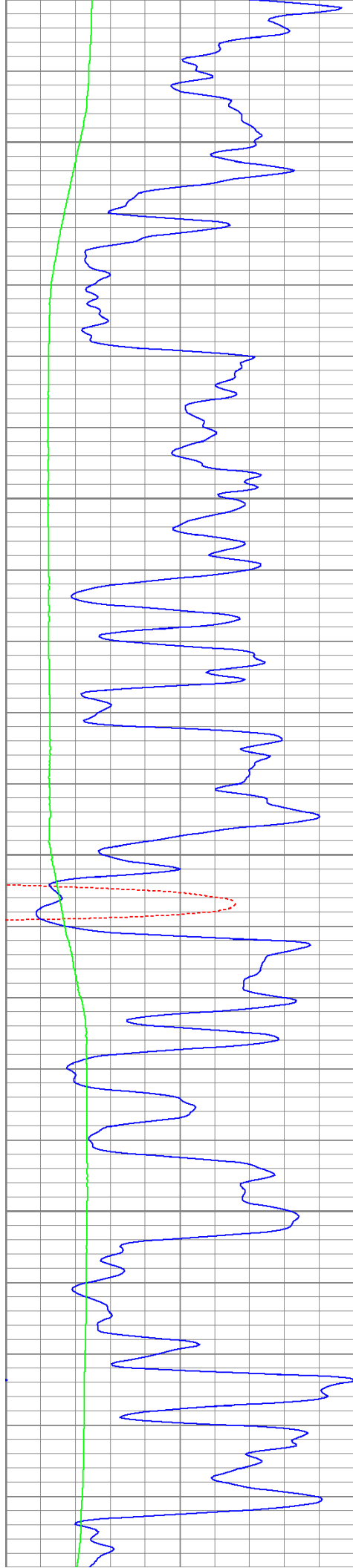
1100

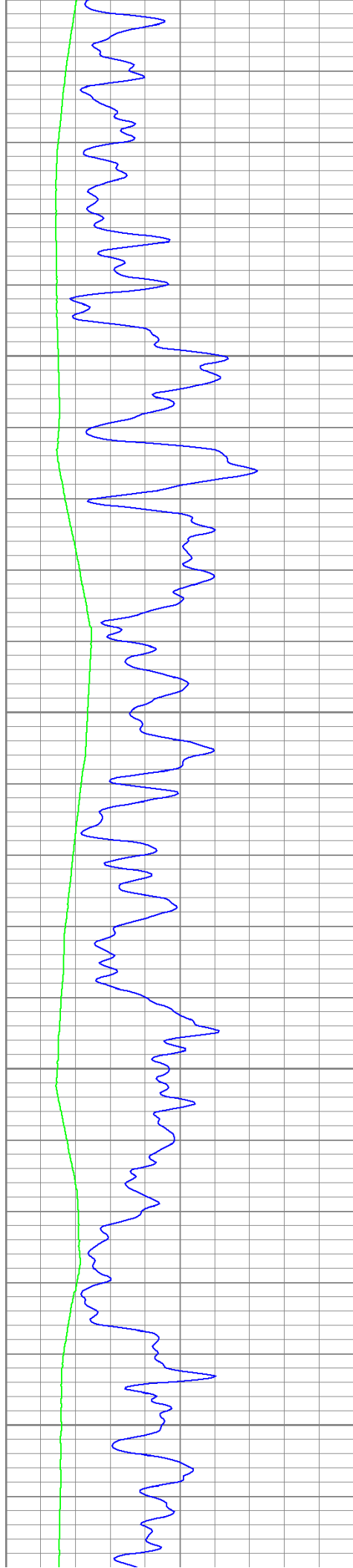
1150

1200

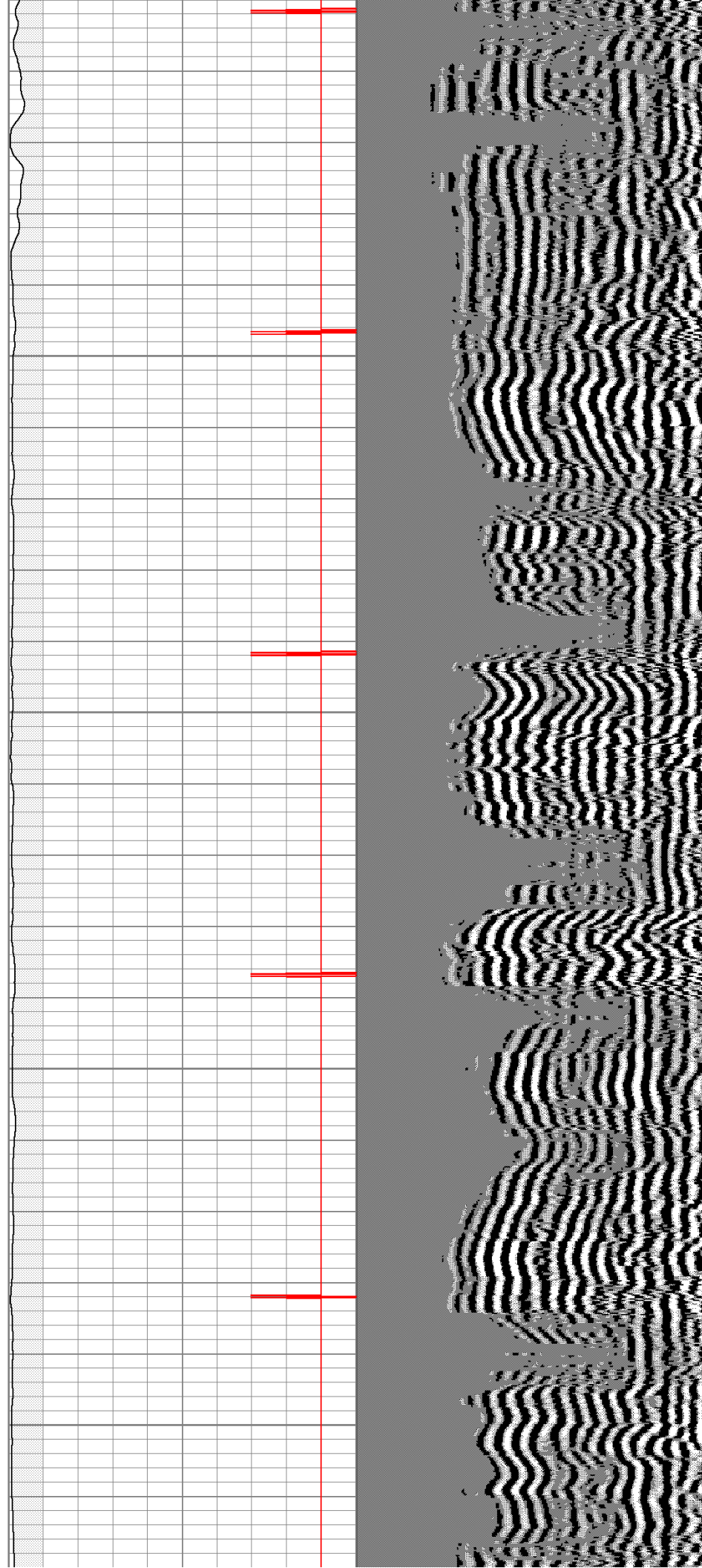
1250

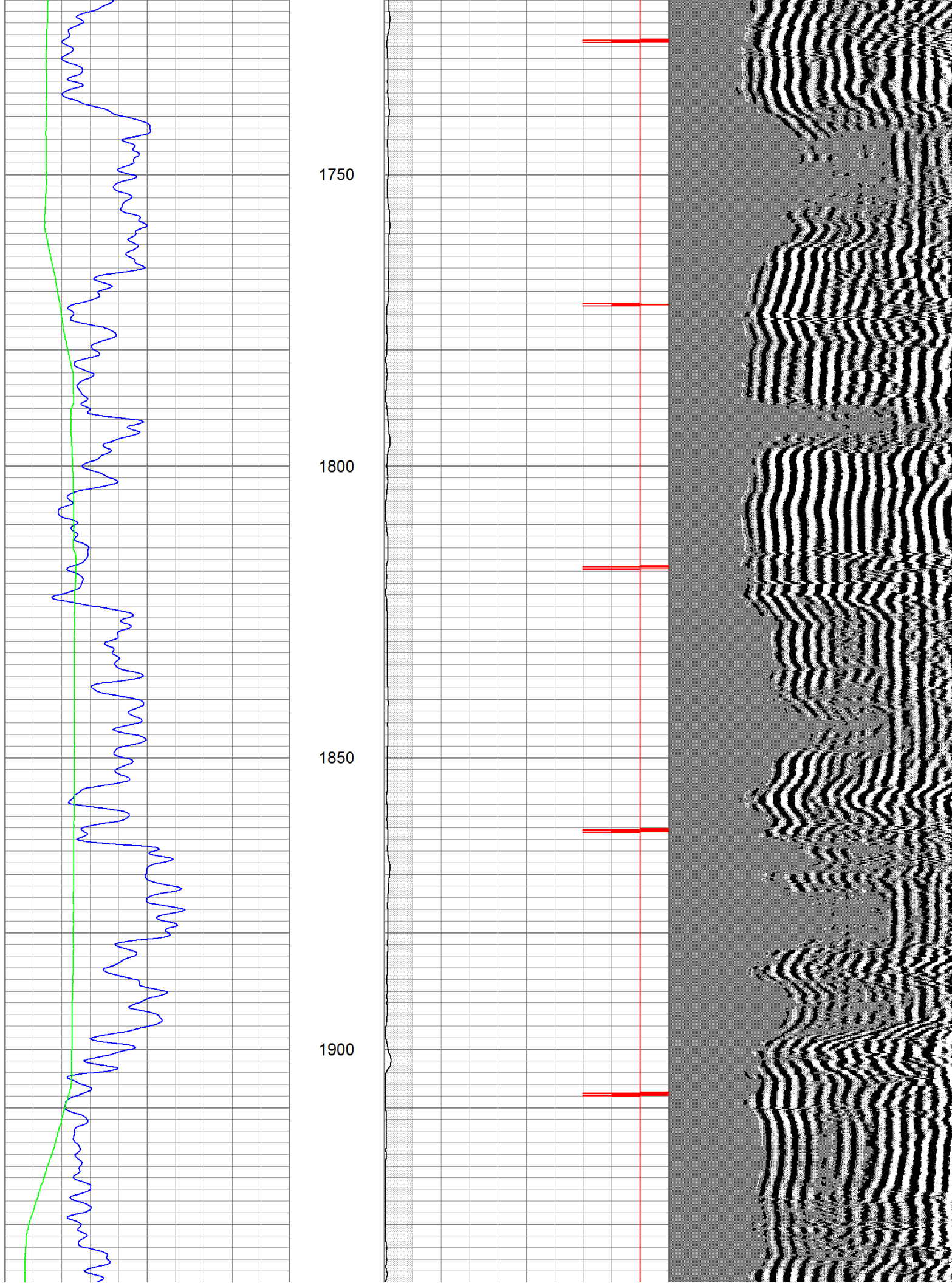


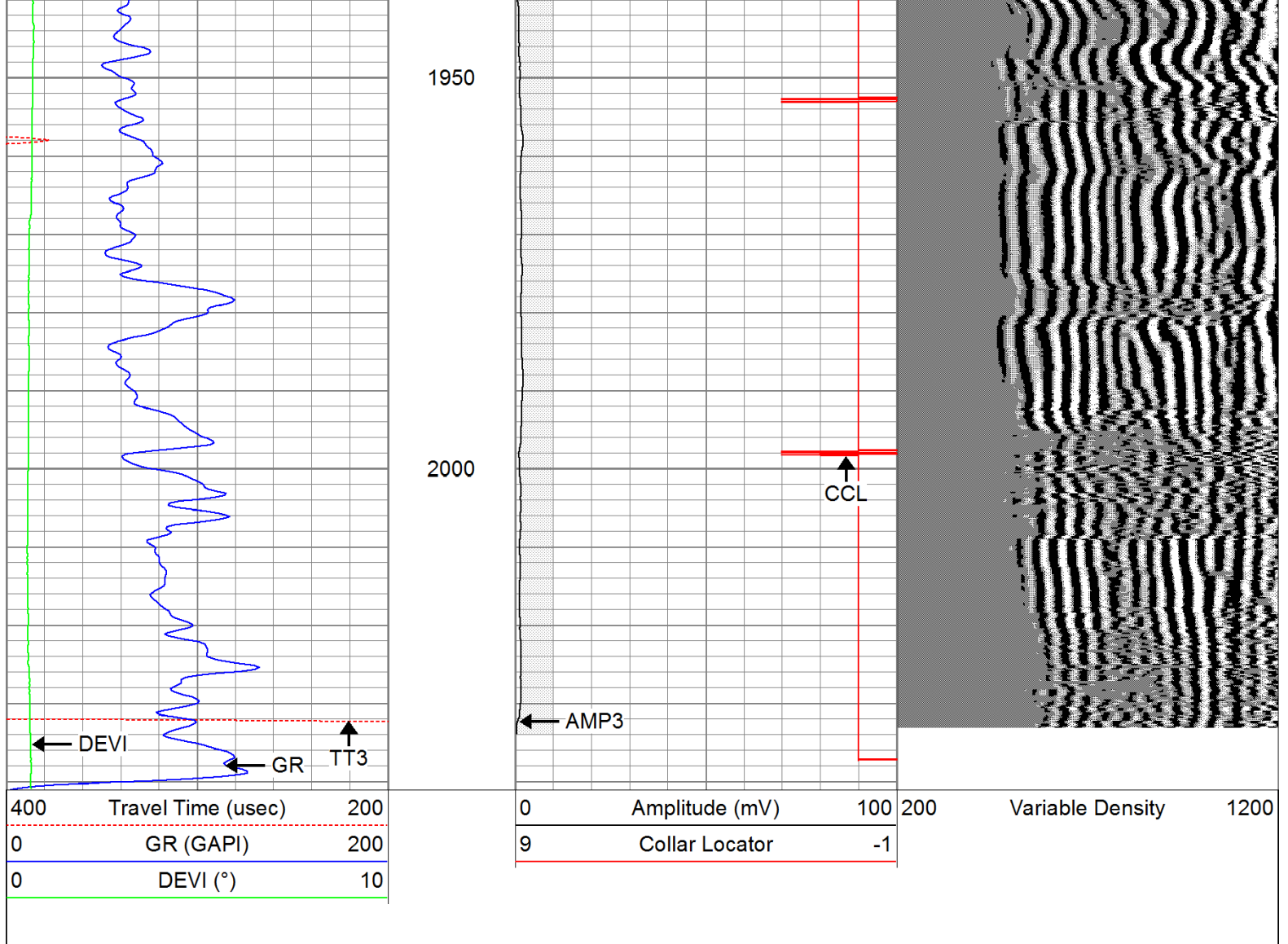




1500
1550
1600
1650
1700



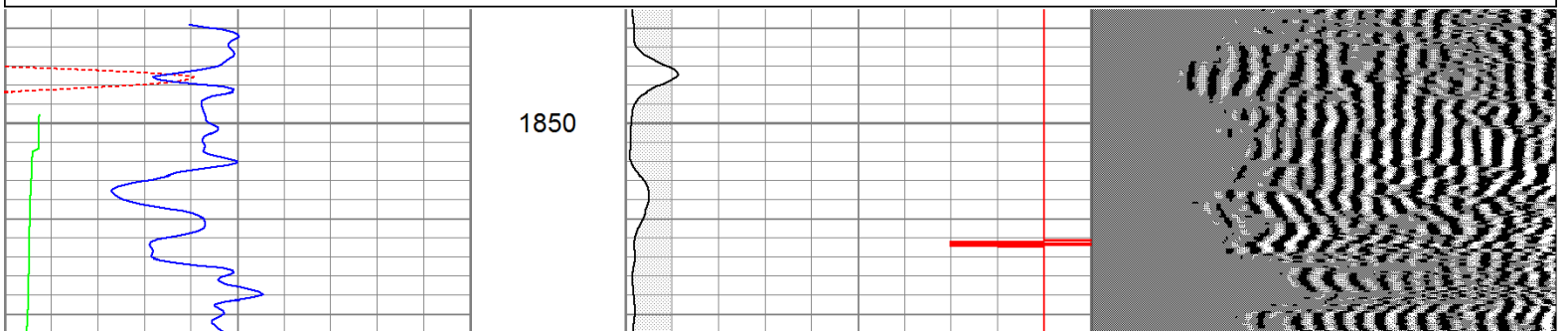


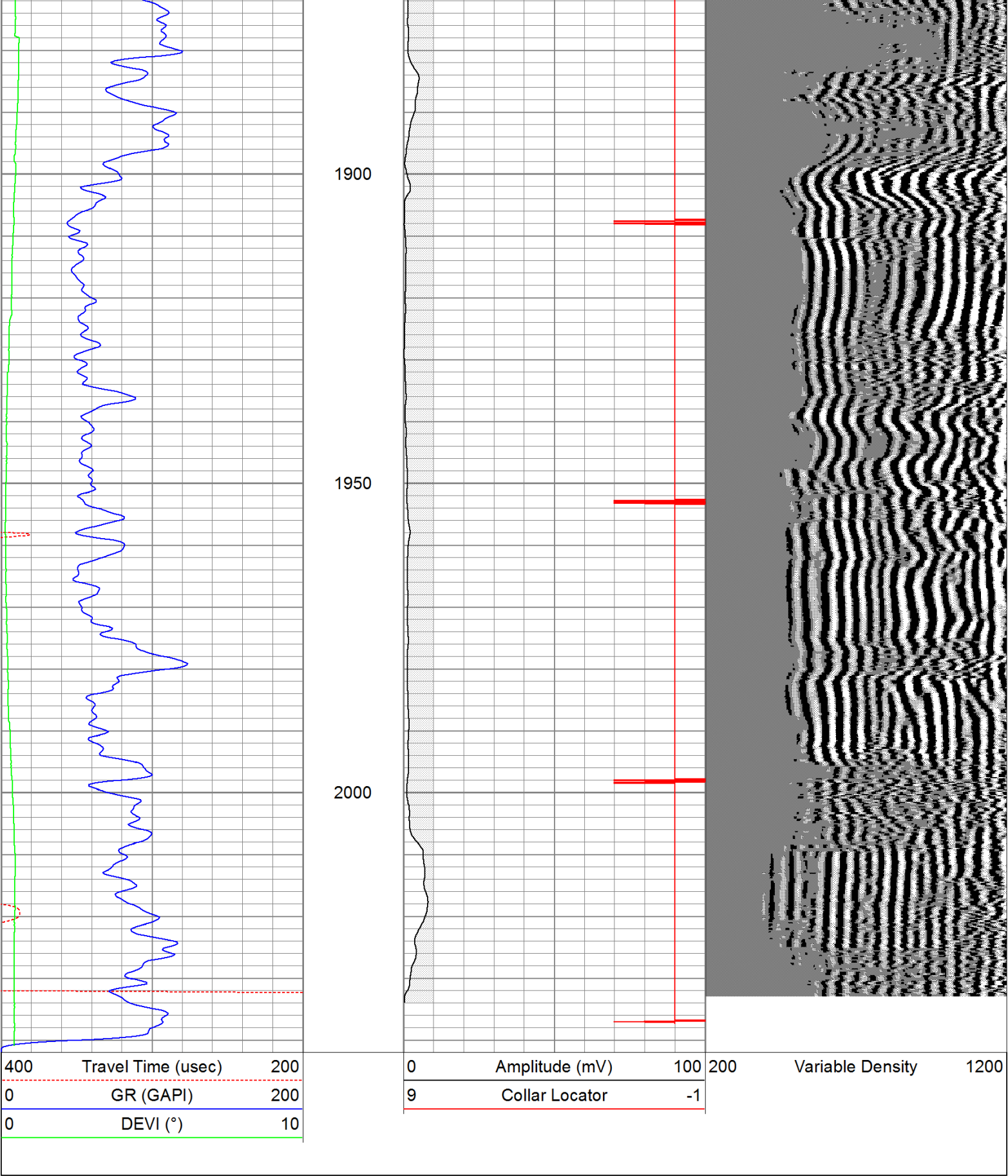


Repeat Pass

Database File: ac20-0763011b.db
 Dataset Pathname: pass2
 Presentation Format: cbldig
 Dataset Creation: Thu Jun 30 08:03:41 2011 by Log Open-Cased 110302
 Charted by: Depth in Feet scaled 1:240

400	Travel Time (usec)	200	0	Amplitude (mV)	100	200	Variable Density	1200
0	GR (GAPI)	200	9	Collar Locator	-1			
0	DEVI (°)	10						





Calibration Report

Database File: ac20-0763011b.db
Dataset Pathname: pass2
Dataset Creation: Thu Jun 30 08:03:41 2011 by Log Open-Cased 110302

Serial Number: 080616
 Tool Model: 275D_INC
 Performed: Wed May 04 17:31:09 2011

 Calibrator Value: 200.0 GAPI

 Background Reading: 50.0 cps
 Calibrator Reading: 250.0 cps

 Sensitivity: 1.0000 GAPI/cps

Inclinometer Calibration Report

Performed: Wed May 04 17:39:54 2011

	Low Read.	High Read.	Low Ref.	High Ref.	
X Accelerometer	-3585.20	3595.40	-1.00	1.00	gee
Y Accelerometer	-3619.40	3520.00	-1.00	1.00	gee
Z Accelerometer					

Cement Bond Log Calibration Report

Serial Number: 081024
 Tool Model: PROBEDIGITALCBL
 Performed: Mon Jun 27 16:39:48 2011

 Depth: 140.471 ft
 Casing Diameter: 5.5 in

	3' Spacing	5' Spacing	
Signal Zero:	0	0	mV
Calibrated Amplitude:	85	85	mV
Reading at Signal Zero:	-0.0095459	-0.00961914	V
Reading in Free Pipe:	1.91331	1.71543	V
Gain:	44.2052	49.274	
Offset:	0.421978	0.473973	

Sensor	Offset (ft)	Schematic	Description	Len (ft)	OD (in)	Wt (lb)
			None	0.75	1.50	5.00
			Star	0.29	1.50	0.50
WVF3	9.04		CBL-PROBEDIGITALCBL (081024) PROBE DIGITAL CBL	8.75	2.75	106.50
WVF5	8.04					
			Star	0.29	1.50	0.50
CCL	3.50		GR-275D_INC (080616) 2-3/4" GR-CCL with Inclination	4.50	2.75	50.00
ACCX	1.83					
ACCY	1.83					
ACCZ	1.83					
GR	0.83					

			Dataset:	ac20-0763011b.db: field/well/run1/pass2	
			Total Length:	14.58 ft	
			Total Weight:	162.50 lb	
			O.D.	2.75 in	