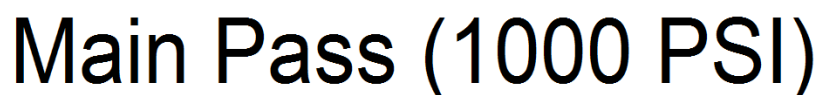


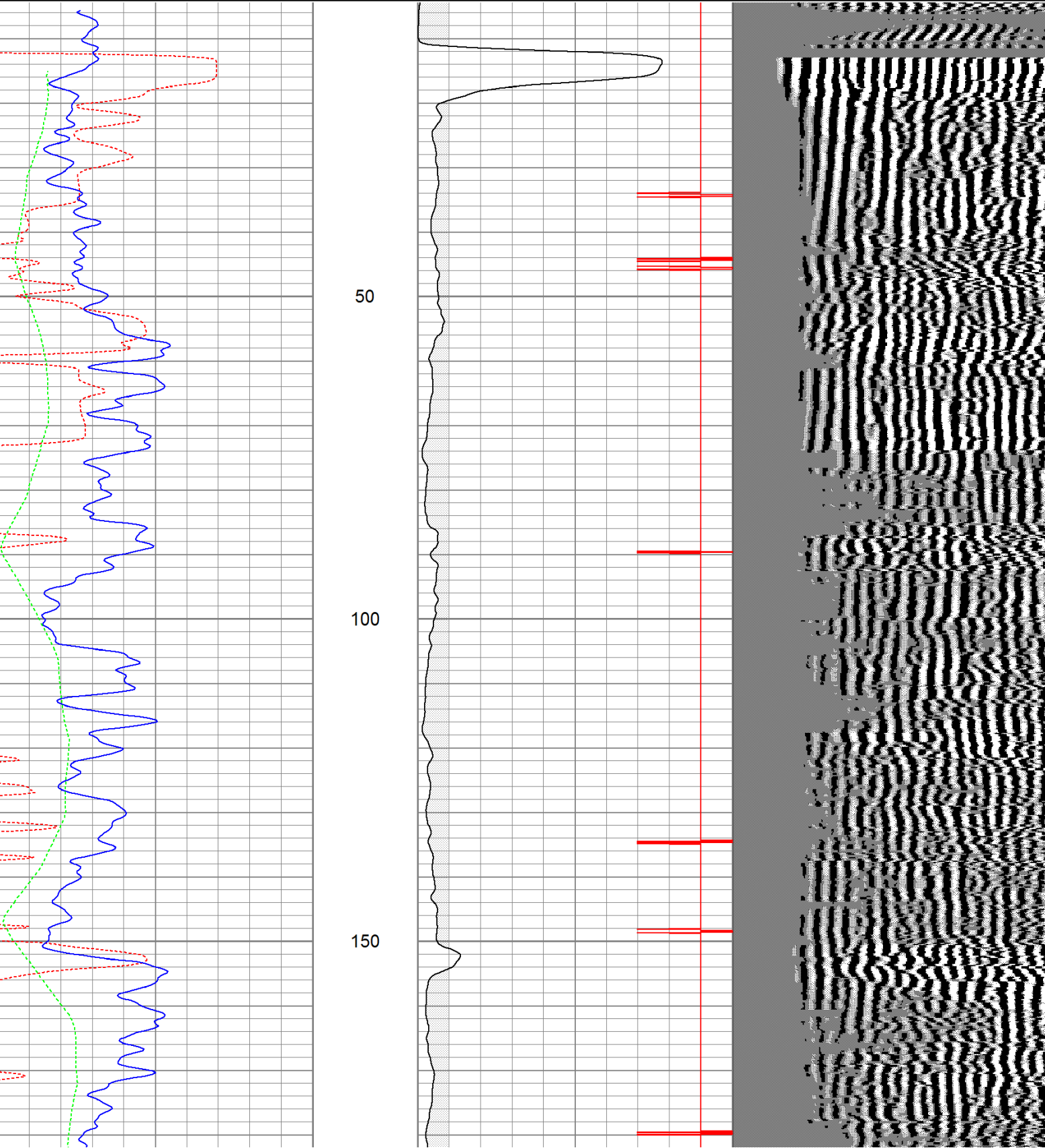


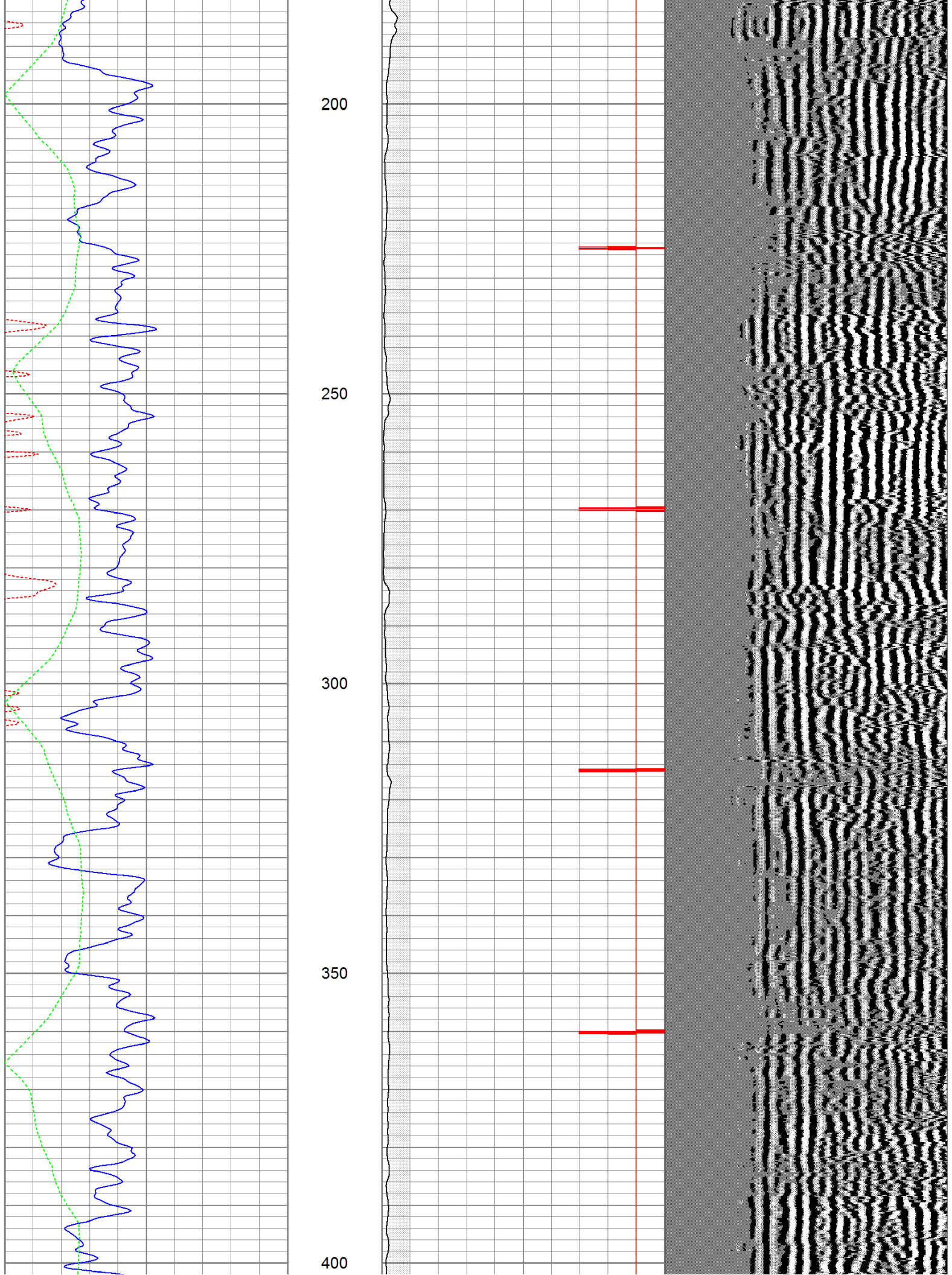
<<< Fold Here >>>
All interpretations are opinions based on inferences from electrical or other measurements and we cannot and do not guarantee the accuracy or correctness of any interpretation, and we shall not, except in the case of gross or willful negligence on our part, be liable or responsible for any loss, costs, damages, or expenses incurred or sustained by anyone resulting from any interpretation made by any of our officers, agents or employees. These interpretations are also subject to our general terms and conditions set out in our current Price Schedule.
Comments
Main Pass ran under 1000 PSI. Directions:

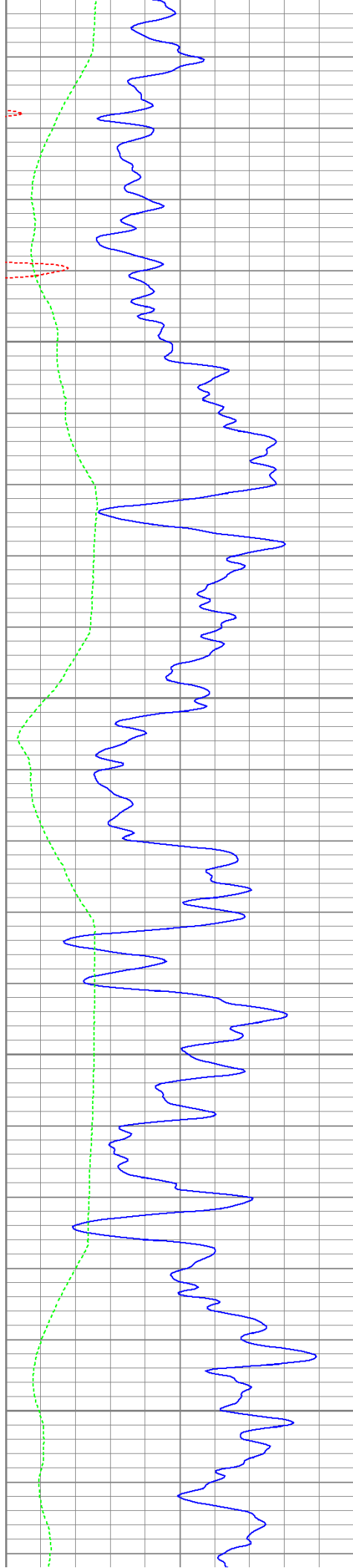


Database File: ac20-1162911b.db
Dataset Pathname: pass8.1
Presentation Format: cbldig
Dataset Creation: Wed Jun 29 10:03:24 2011 by Calc Open-Cased 110302
Charted by: Depth in Feet scaled 1:240

400	Travel Time (usec)	200	0	Amplitude (mV)	100	200	Variable Density	1200
0	GR (GAPI)	200	9	Collar Locator	-1			
0	DEVI (°)	10						





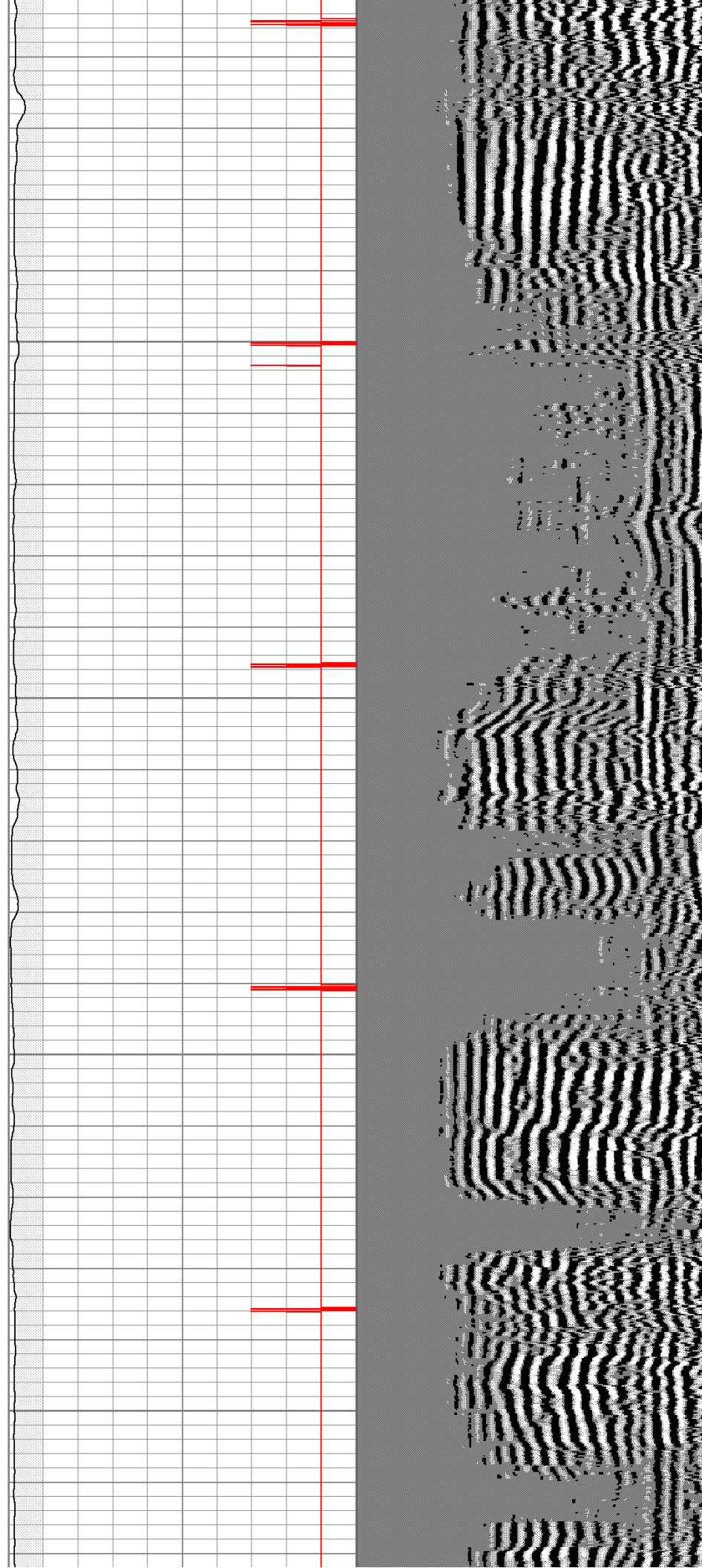


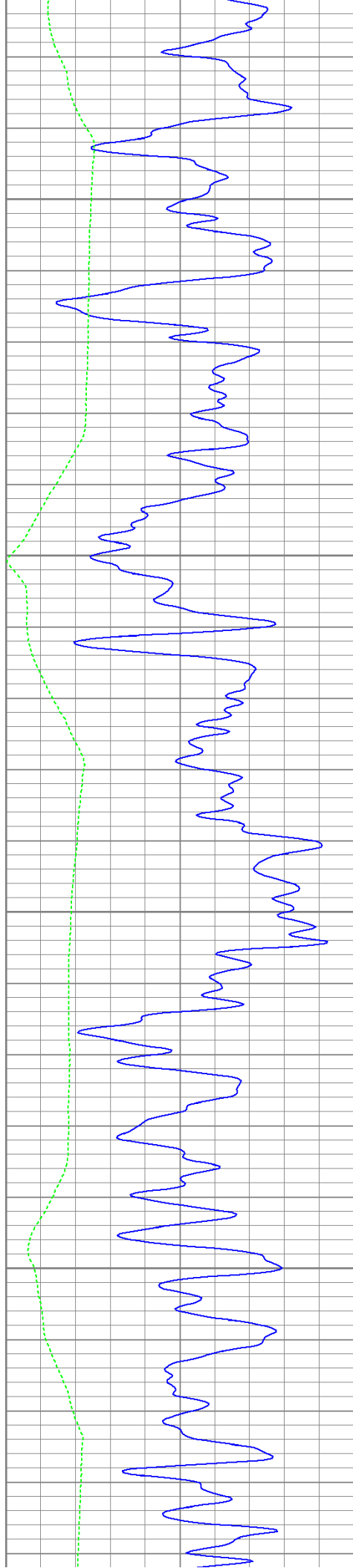
450

500

550

600



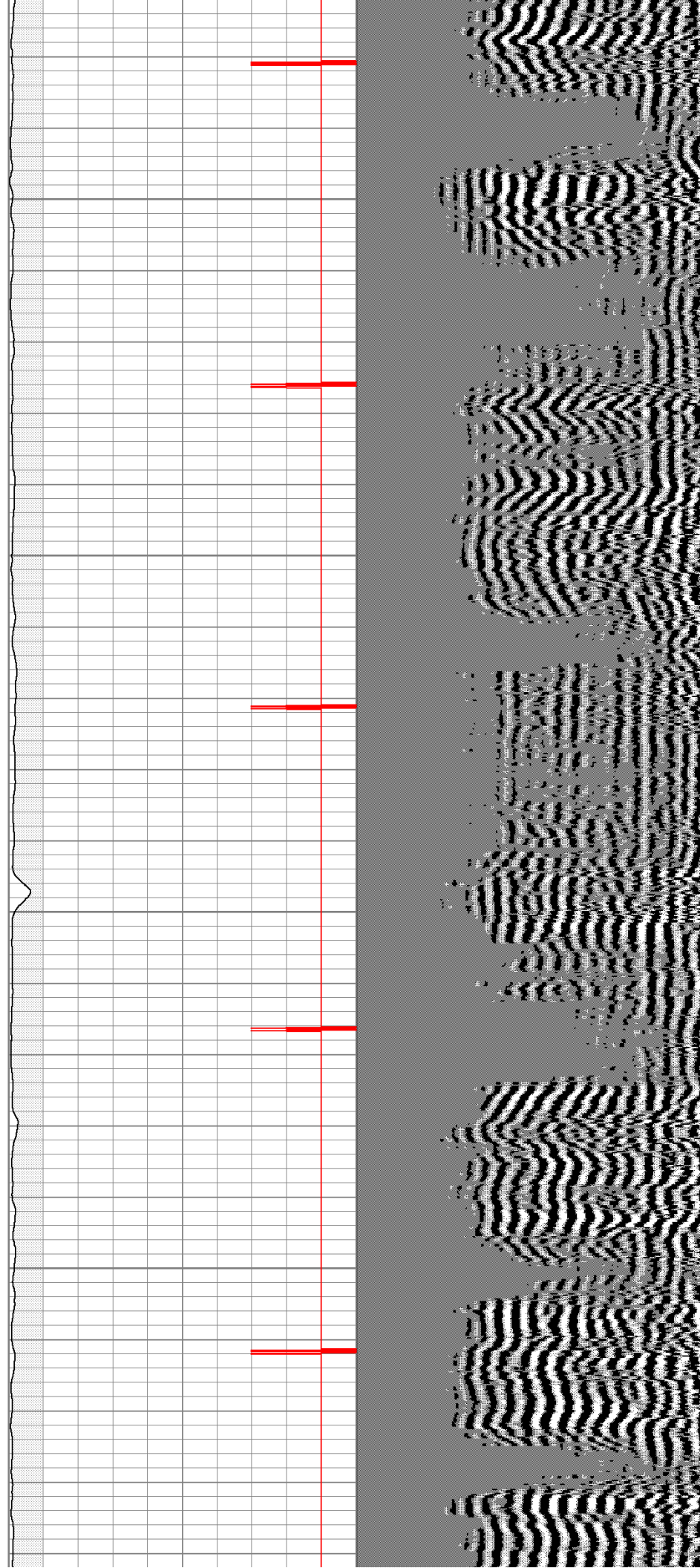


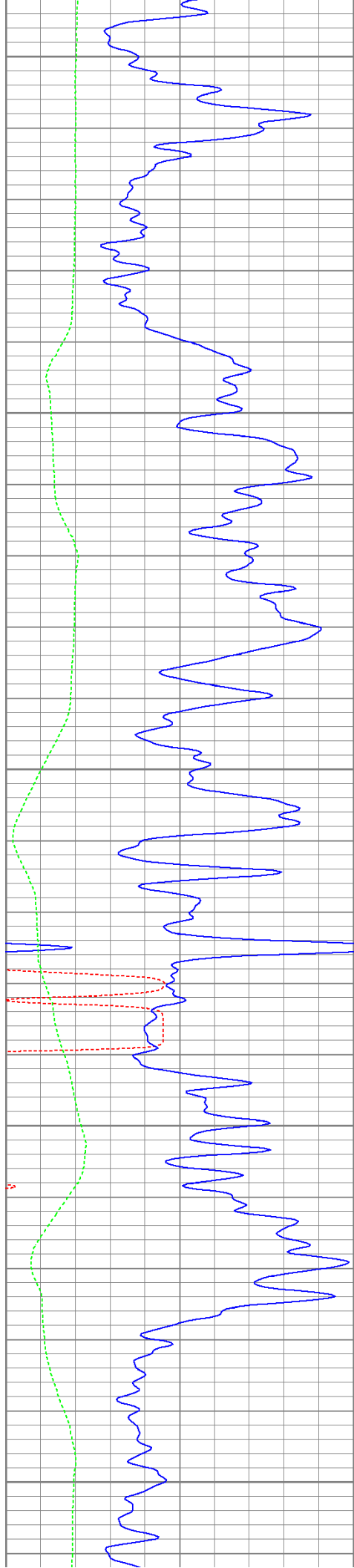
650

700

750

800





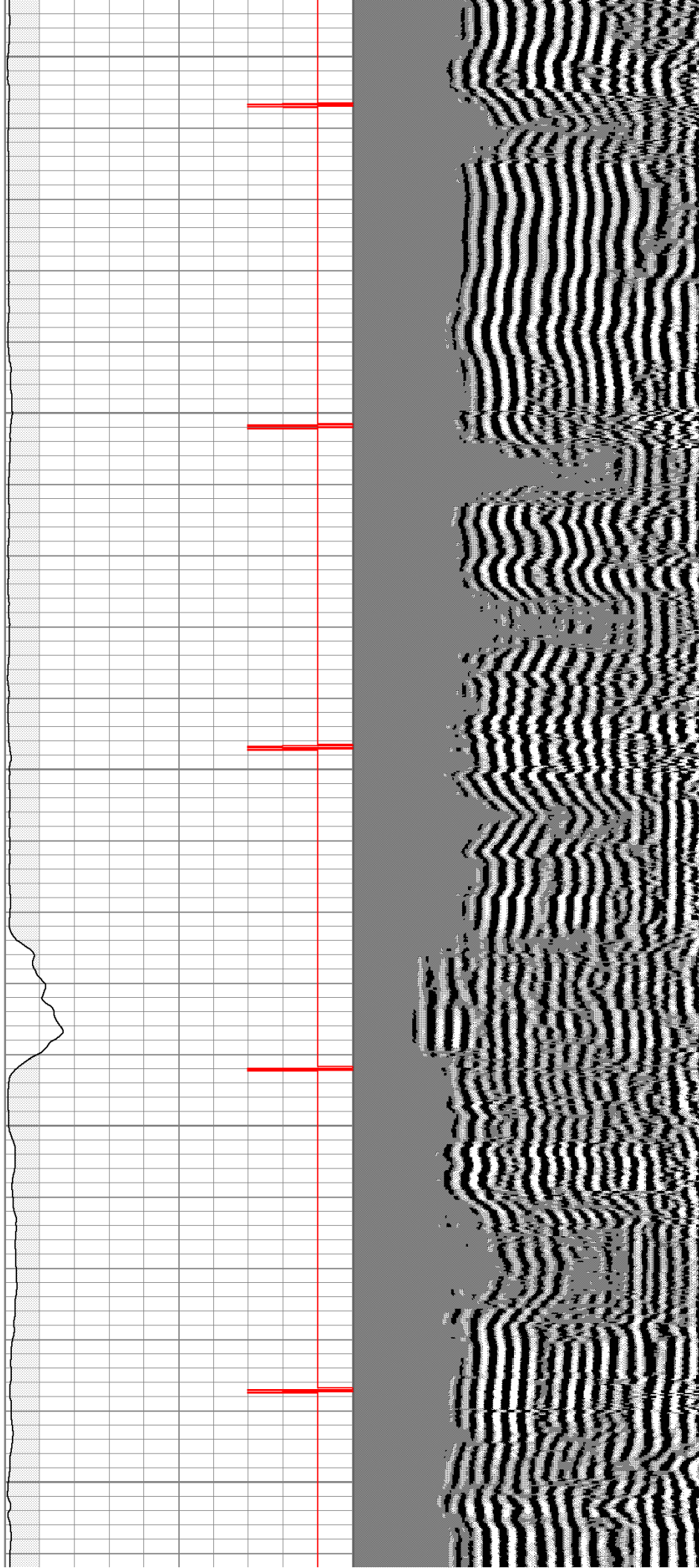
850

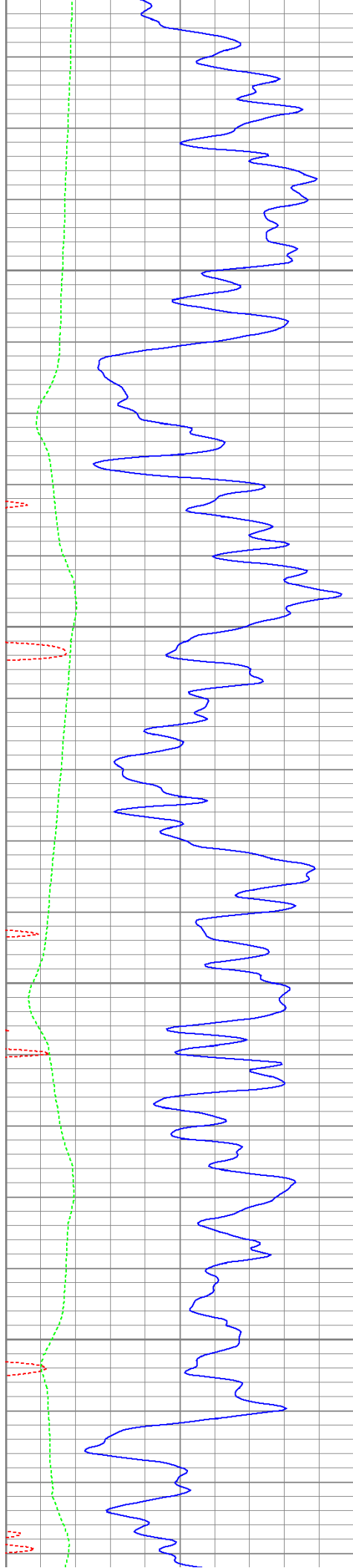
900

950

1000

1050



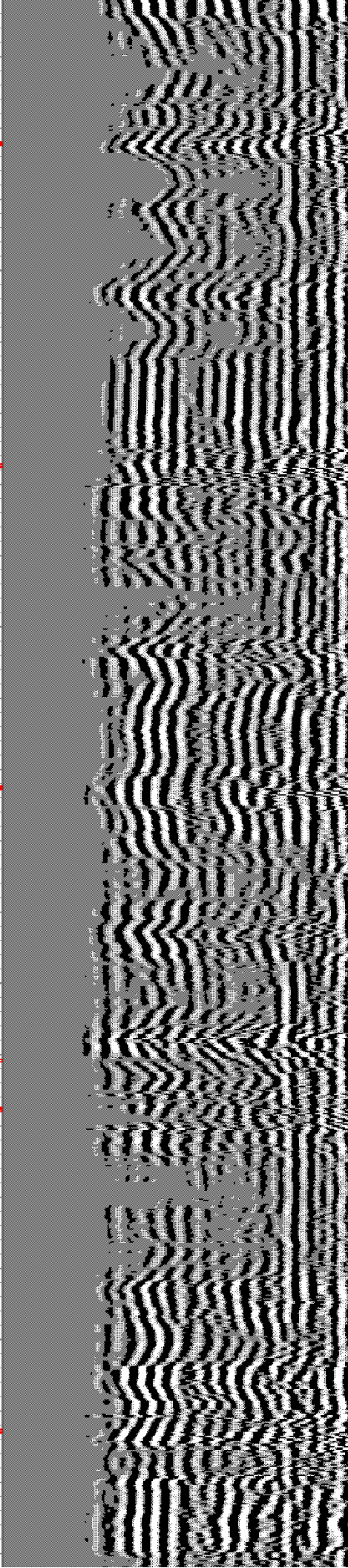
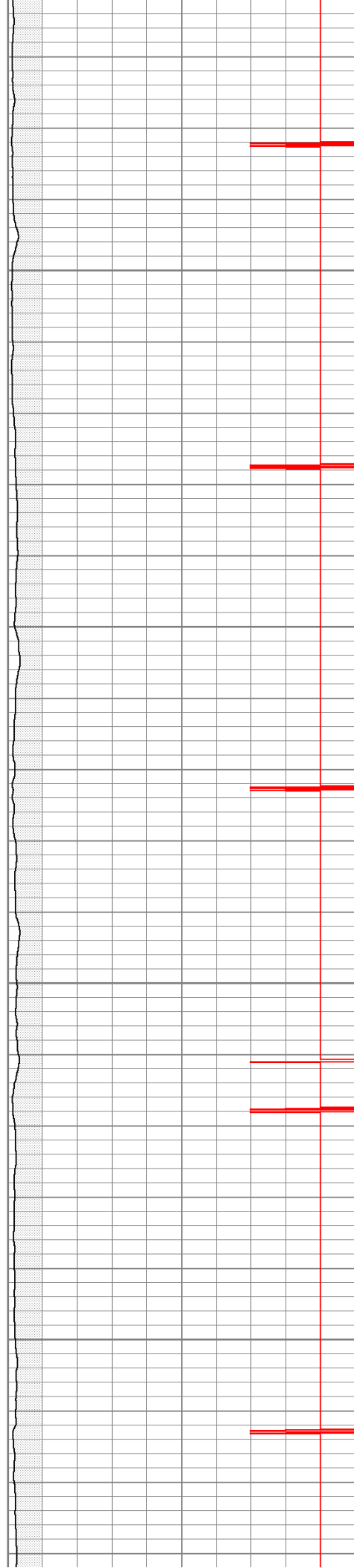


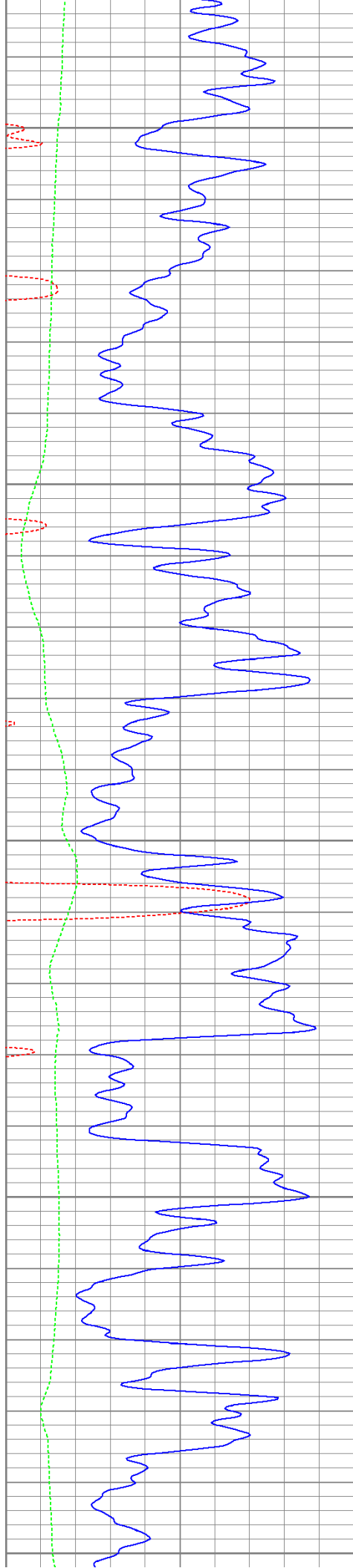
1100

1150

1200

1250





1300

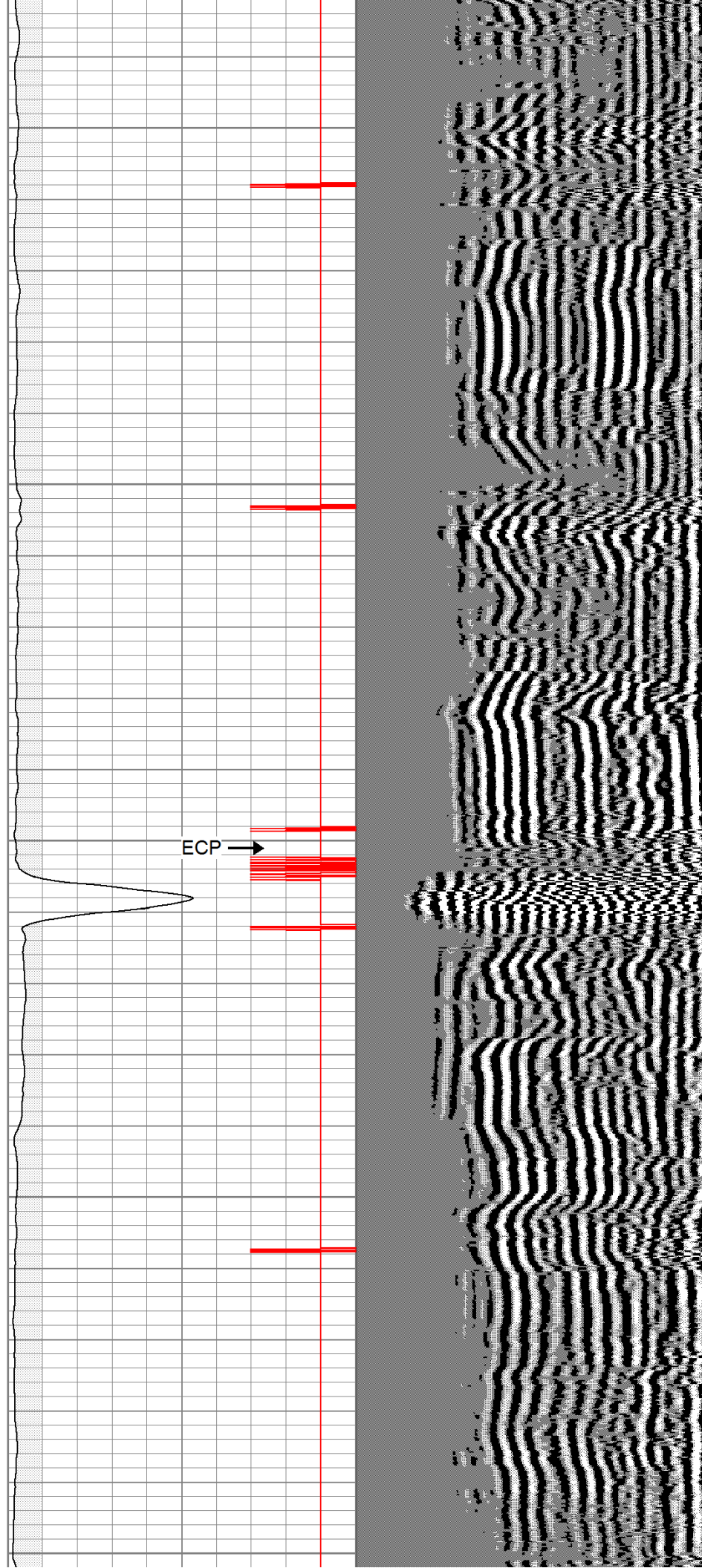
1350

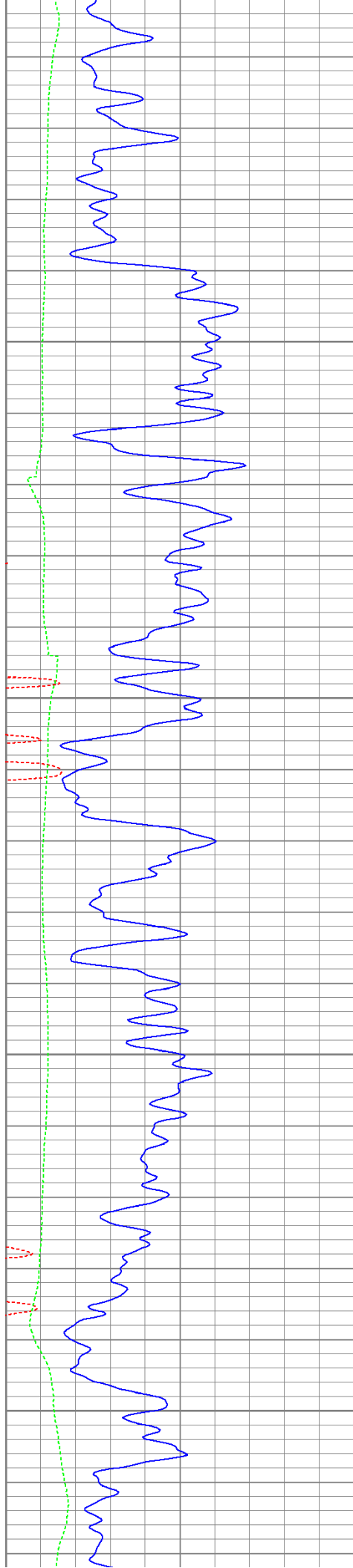
1400

1450

1500

ECP →



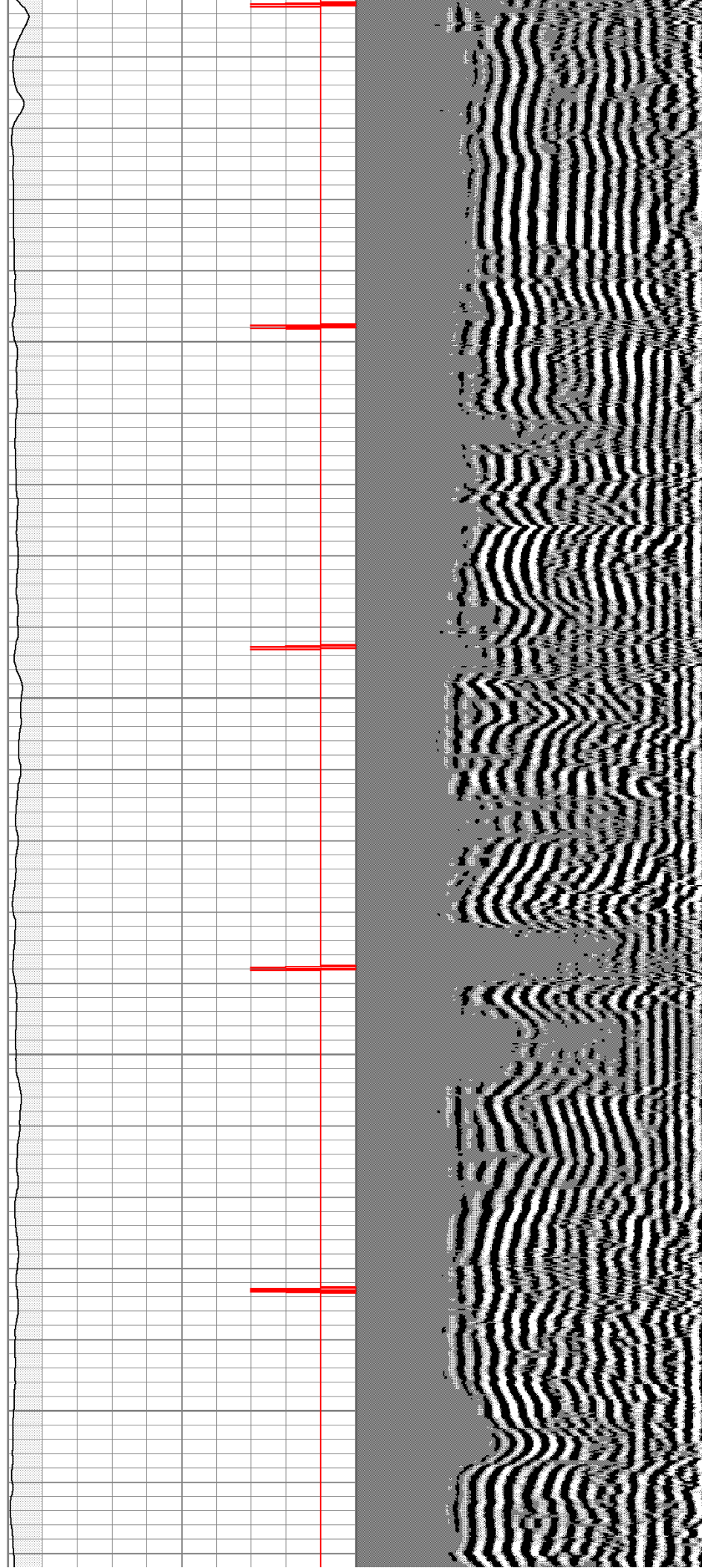


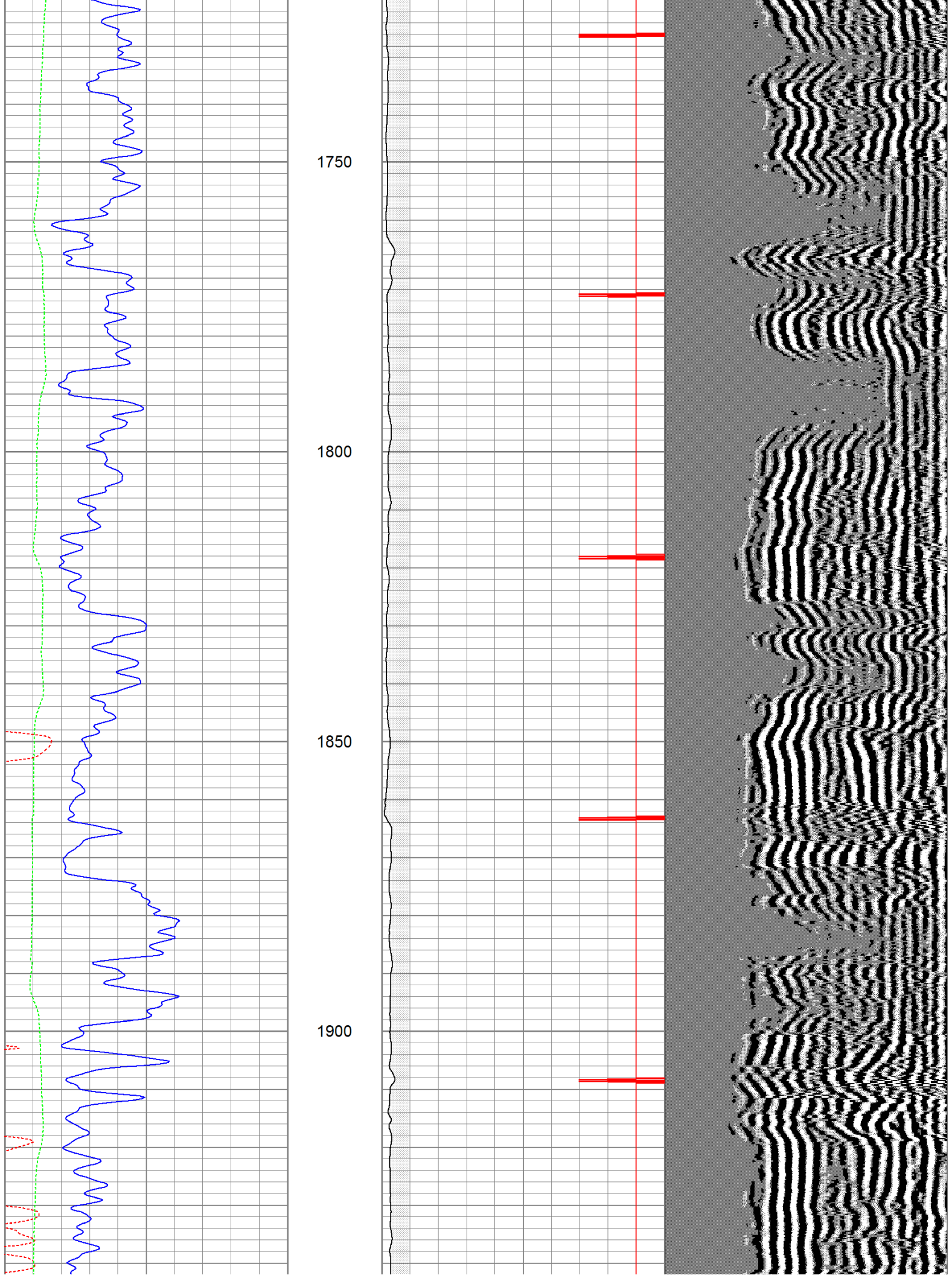
1550

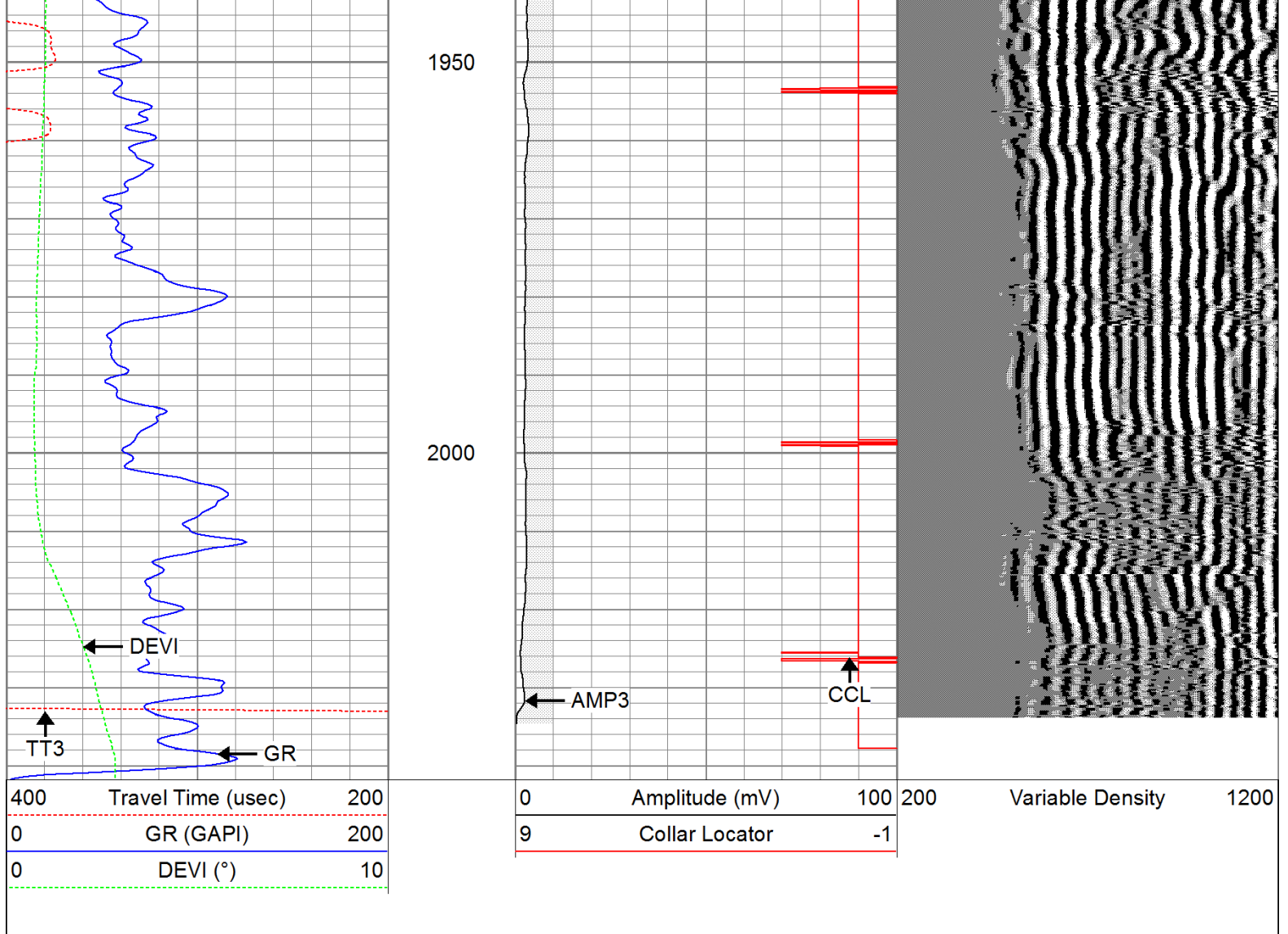
1600

1650

1700



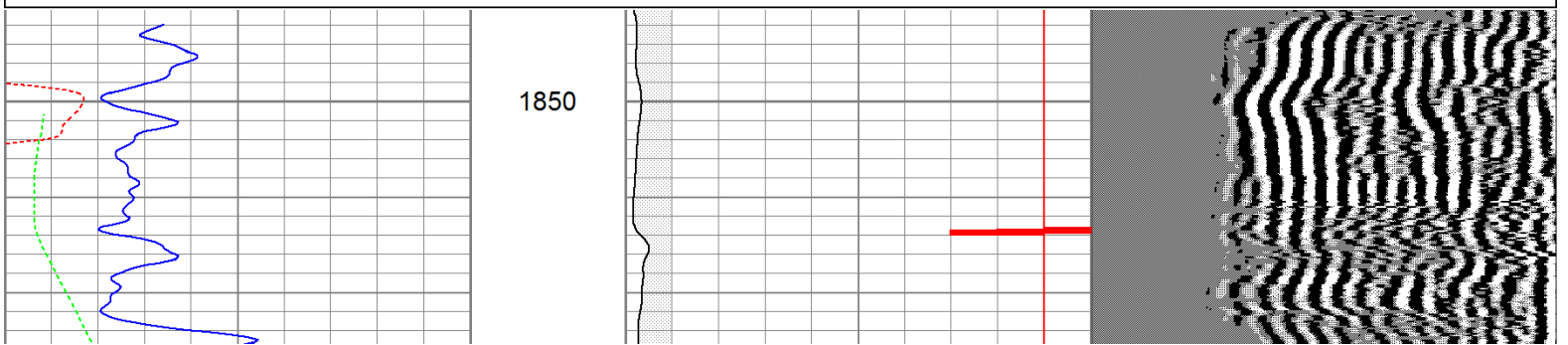


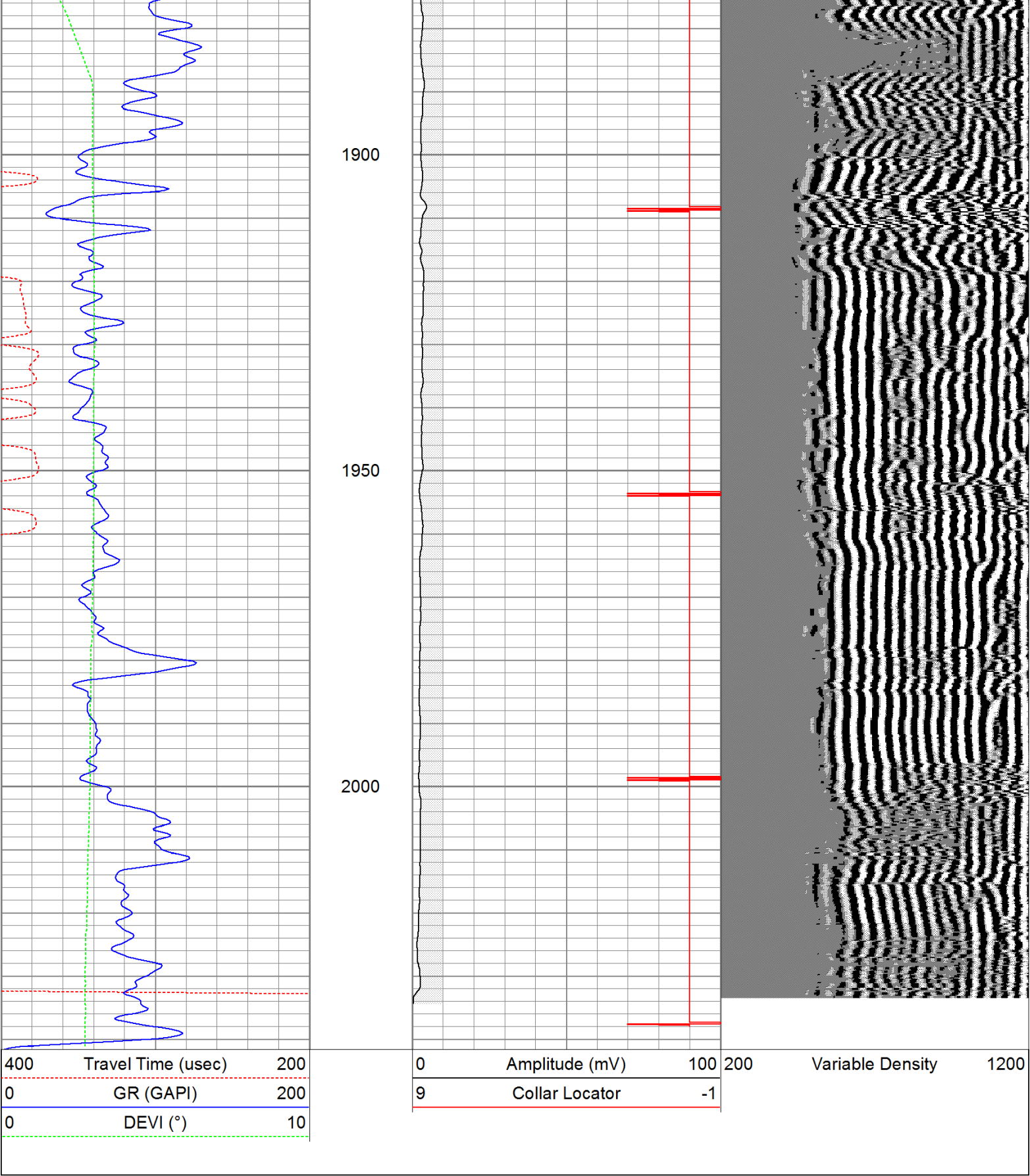


Repeat Pass

Database File: ac20-1162911b.db
 Dataset Pathname: pass5
 Presentation Format: cbldig
 Dataset Creation: Wed Jun 29 09:01:51 2011 by Log Open-Cased 110302
 Charted by: Depth in Feet scaled 1:240

400	Travel Time (usec)	200	0	Amplitude (mV)	100	200	Variable Density	1200
0	GR (GAPI)	200	9	Collar Locator	-1			
0	DEVI (°)	10						





Calibration Report

Database File: ac20-1162911b.db
Dataset Pathname: pass2
Dataset Creation: Wed Jun 29 08:32:46 2011 by Log Open-Cased 110302

Gamma Ray Calibration Report

Serial Number: 080616
Tool Model: 275D-INC

Tool Model:	275D_INC	
Performed:	Wed May 04 17:31:09 2011	
Calibrator Value:	200.0	GAPI
Background Reading:	50.0	cps
Calibrator Reading:	250.0	cps
Sensitivity:	1.0000	GAPI/cps

Inclinometer Calibration Report

Performed:	Wed May 04 17:39:54 2011				
	Low Read.	High Read.	Low Ref.	High Ref.	
X Accelerometer	-3585.20	3595.40	-1.00	1.00	gee
Y Accelerometer	-3619.40	3520.00	-1.00	1.00	gee
Z Accelerometer					

Cement Bond Log Calibration Report

Serial Number:	081024				
Tool Model:	PROBEDIGITALCBL				
Performed:	Mon Jun 27 16:39:48 2011				
Depth:	140.471	ft			
Casing Diameter:	5.5	in			
	3' Spacing		5' Spacing		
Signal Zero:	0		0		mV
Calibrated Amplitude:	85		85		mV
Reading at Signal Zero:	-0.0095459		-0.00961914		V
Reading in Free Pipe:	1.91331		1.71543		V
Gain:	44.2052		49.274		
Offset:	0.421978		0.473973		

Sensor	Offset (ft)	Schematic	Description	Len (ft)	OD (in)	Wt (lb)
			None	0.75	1.50	5.00
			Star	0.29	1.50	0.50
WVF3	9.04		CBL-PROBEDIGITALCBL (081024) PROBE DIGITAL CBL	8.75	2.75	106.50
WVF5	8.04					
			Star	0.29	1.50	0.50
CCL	3.50		GR-275D_INC (080616) 2-3/4" GR-CCL with Inclination	4.50	2.75	50.00
ACCX	1.83					
ACCY	1.83					
ACCZ	1.83					
GR	0.83					

Dataset:	ac20-1162911b.db: field/well/run1/pass2
Total Length:	14.58 ft
Total Weight:	162.50 lb
O.D.	2.75 in