



CEMENT BOND LOG

Mesa Wireline

Company		ENCANA OIL & GAS (USA) INC.	
Well		FEE 3-16 (A10E)	
Field		MAMM CREEK	
County		GARFIELD	
State		COLORADO	
Company		ENCANA OIL & GAS (USA) INC.	
Well		FEE 3-16 (A10E)	
Field		MAMM CREEK	
County		GARFIELD	
State		COLORADO	
Location:		API # : 05-045-18257-0000	
SHL: NENE 10-7S-92W 0435' FNL & 0002' FEL		Other Services	
BHL: SESE 3-7S-92W 0650' FSL & 0750' FEL		NONE	
SEC. 10 TWP. 07S RGE. 92W		Elevation	
Permanent Datum		GROUND LEVEL	
Log Measured From		KELLY BUSHING = 22 FT	
Drilling Measured From		KELLY BUSHING	
		K.B. 6068'	
		D.F. 6067'	
		G.L. 6046'	

Date	22 MAY 2011		
Run Number	ONE		
Depth Driller	6573'		
Depth Logger	3802'		
Bottom Logged Interval	3801'		
Top Log Interval	2800'		
Open Hole Size	7.875"		
Type Fluid	WATER		
Density / Viscosity	~8.34#		
Max. Recorded Temp.	N/A		
Estimated Cement Top	3300'		
Time Well Ready	B/A		
Time Logger on Bottom	N/A		
Equipment Number	ST0501/RBT01		
Location	GRAND JUNCTION		
Recorded By	D. SOLIS		
Witnessed By	D. CHRISTENSEN		
Borehole Record			
Run Number	Bit	From	To
N/A			N/A
Tubing Record			
	Size	Weight	From
			To
Casing Record	Size	Wt/ft	Top
Surface String	N/A	N/A	N/A
Prot. String			
Production String	4.5"	11.6#	SURFACE
Liner			6573'

<<< Fold Here >>>

All interpretations are opinions based on inferences from electrical or other measurements and we cannot and do not guarantee the accuracy or correctness of any interpretation, and we shall not, except in the case of gross or willful negligence on our part, be liable or responsible for any loss, costs, damages, or expenses incurred or sustained by anyone resulting from any interpretation made by any of our officers, agents or employees. These interpretations are also subject to our general terms and conditions set out in our current Price Schedule.

Comments

RBT-GR-RAN IN COMBINATION.
CORRELATED TO SCHLUMBERGER CBL LOG DATED: 30 MAR 2011.

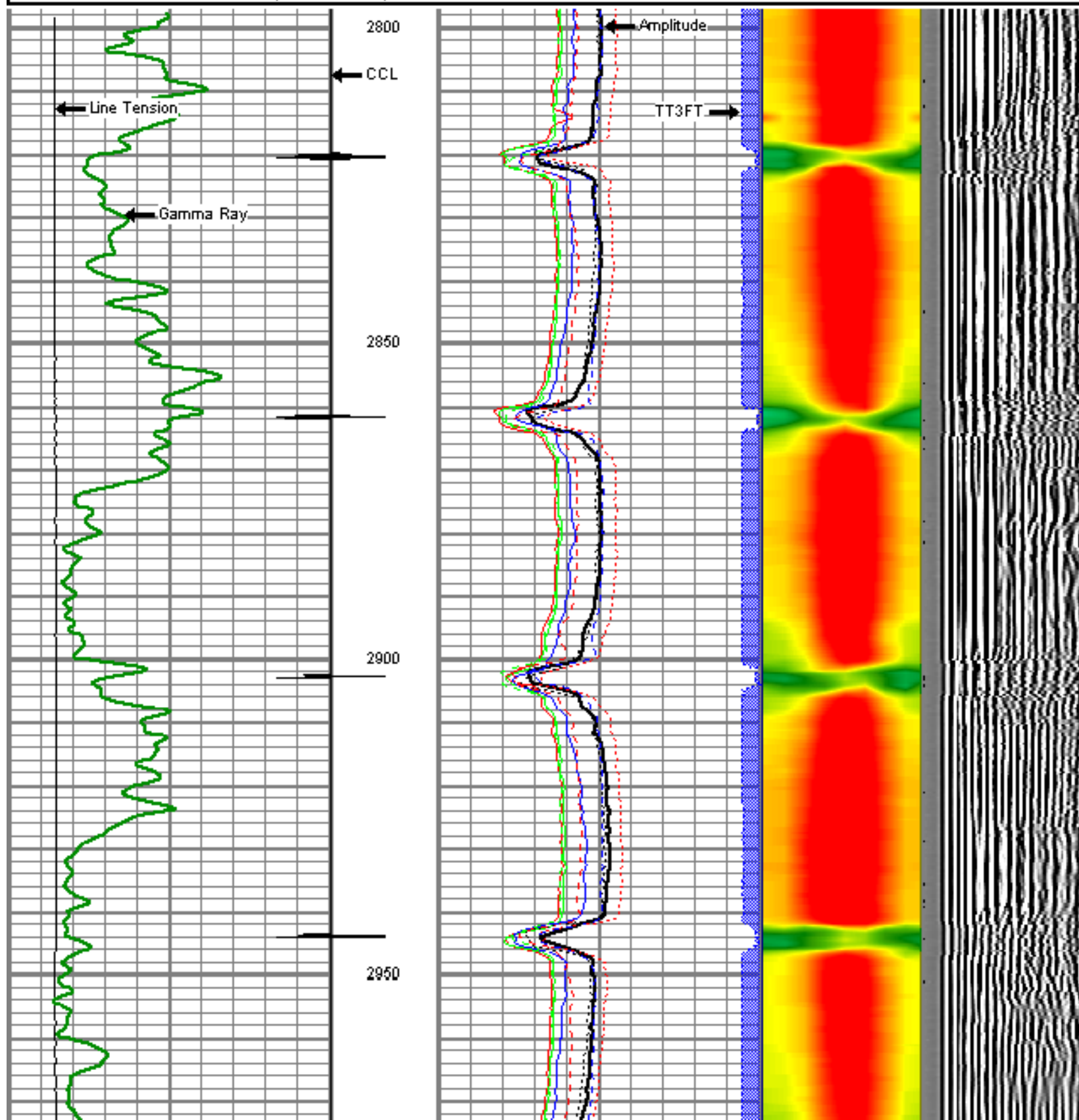
WE APPRECIATE YOUR BUSINESS, MESA WIRELINE LLC, GRAND JUNCTION CO. (970) 257-0

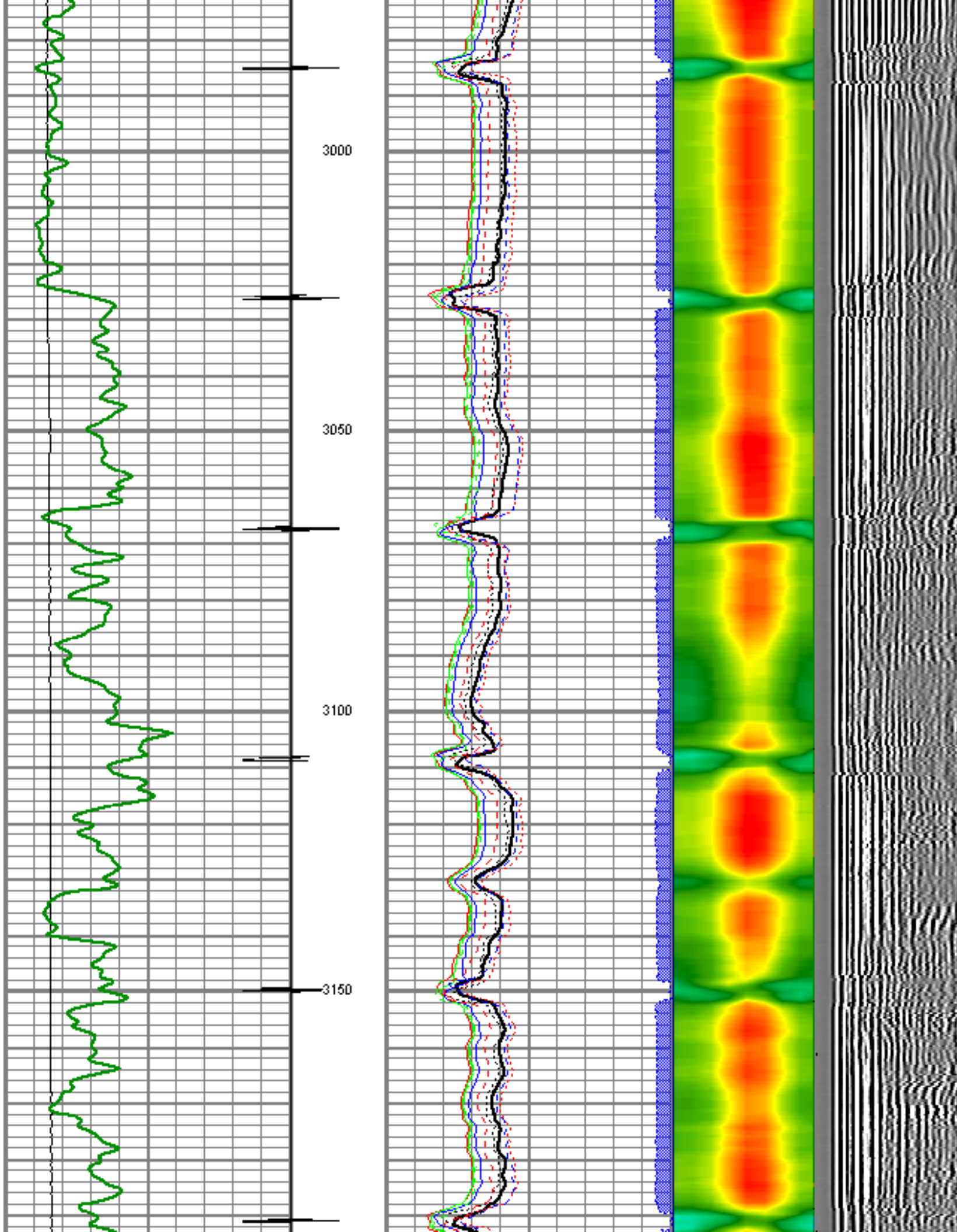


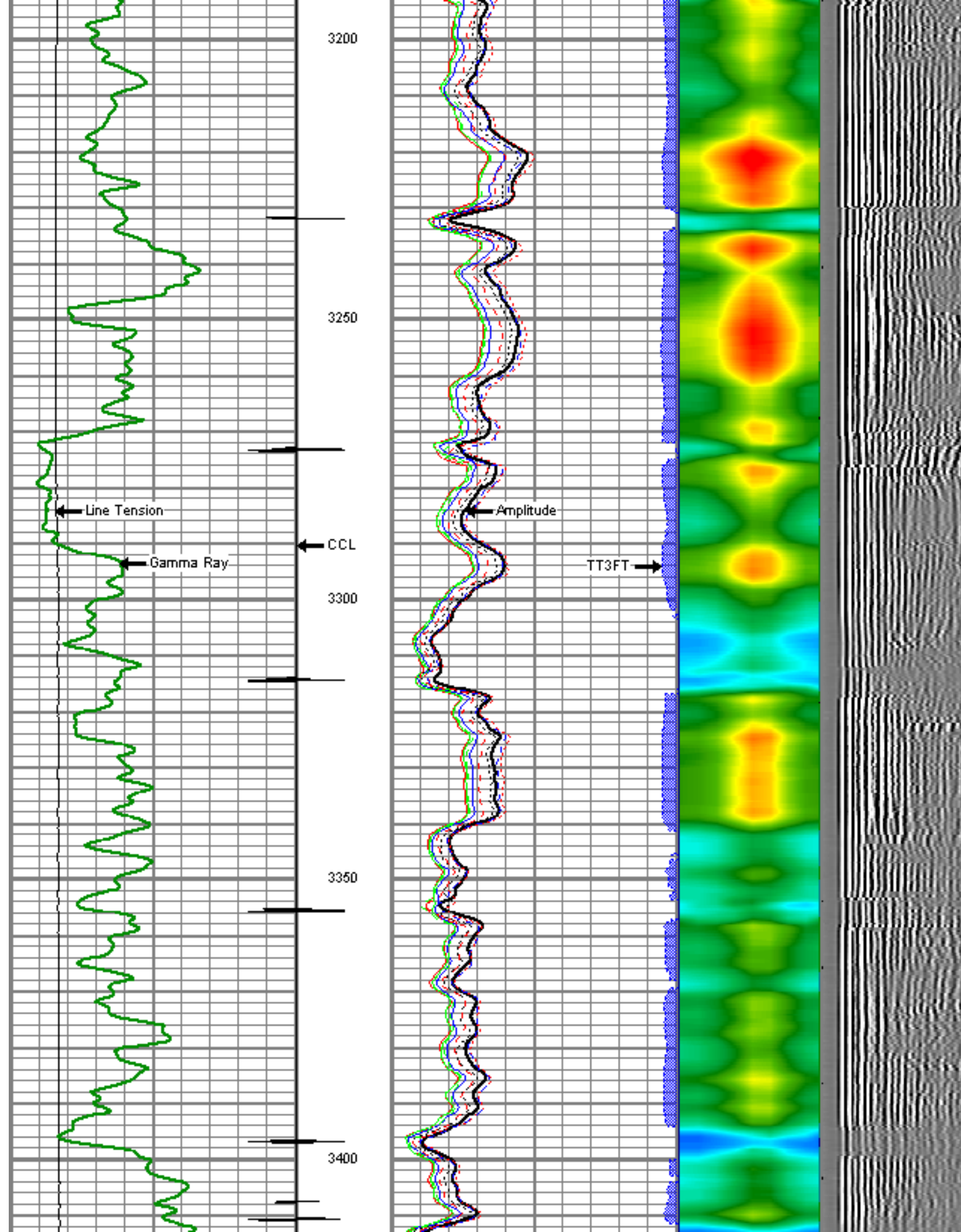
MAIN LOG SECTION

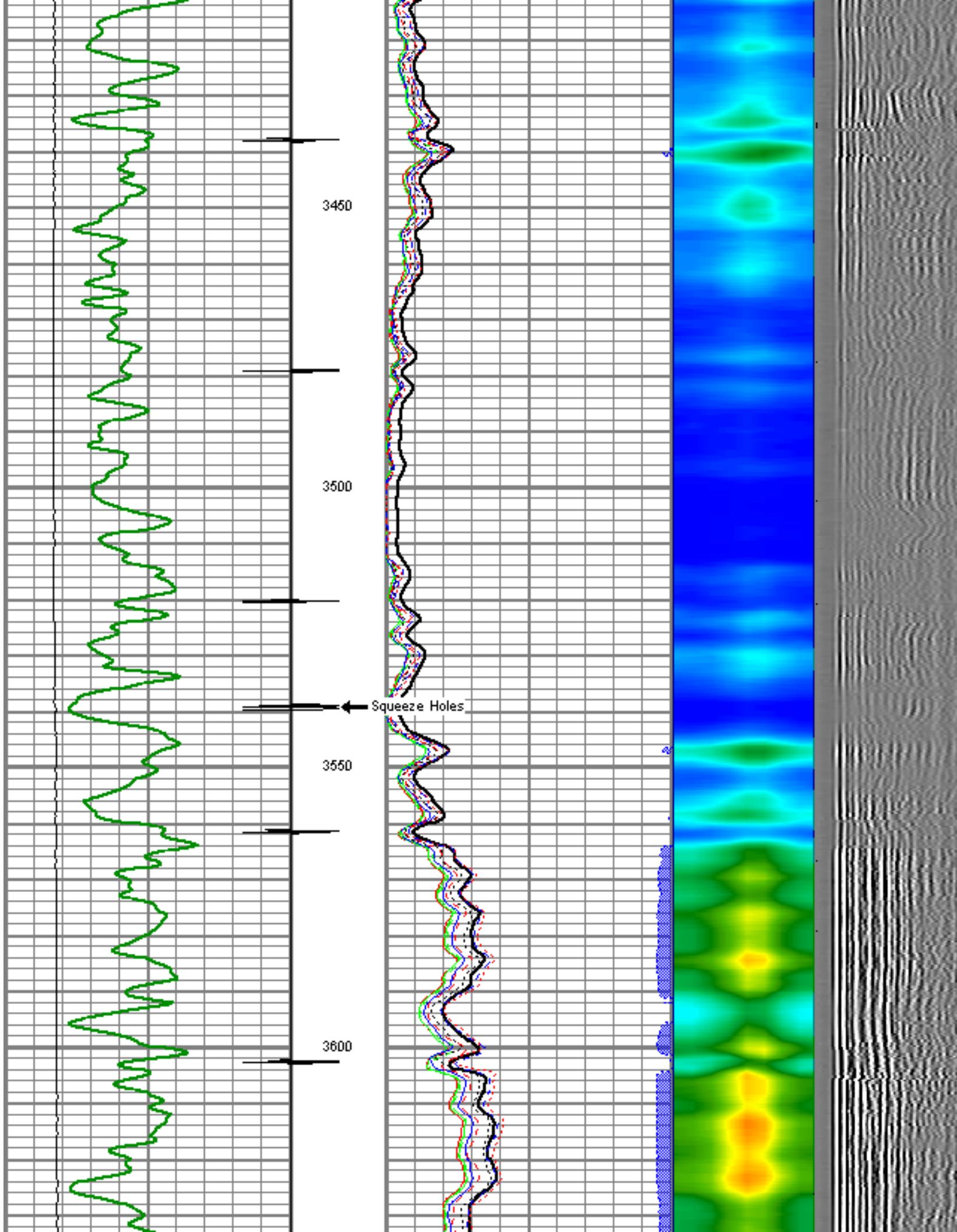
Database File: e_a10ecbl.db
Dataset Pathname: pass4
Presentation Format: rbt_fin
Dataset Creation: Sun May 22 08:04:40 2011 by Log Std Casedhole 08121
Charted by: Depth in Feet scaled 1:240

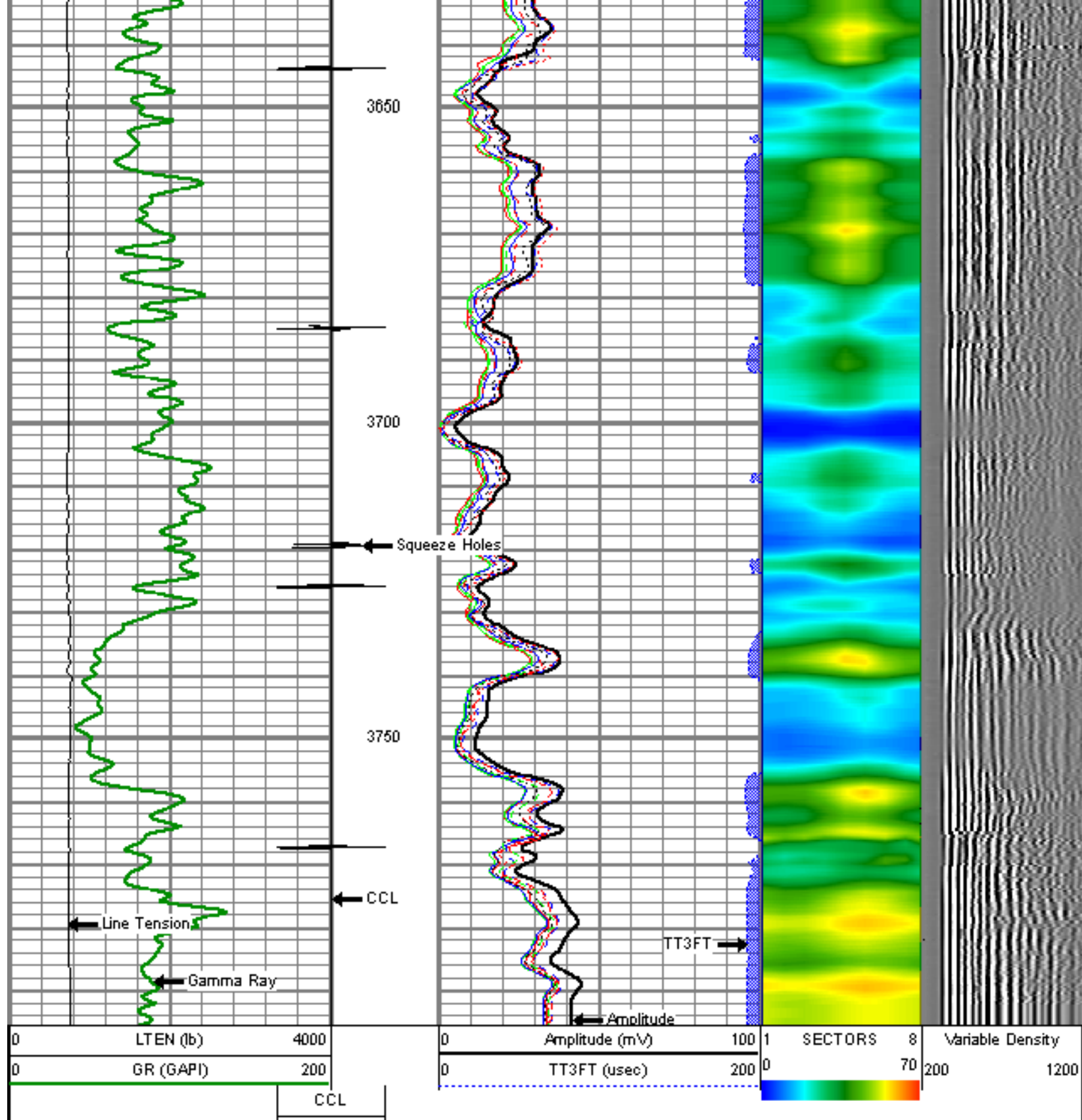
0	LTEN (lb)	4000	0	Amplitude (mV)	100	1	SECTORS	8	Variable Density
0	GR (GAPI)	200	0	TT3FT (usec)	200	0		70	200 1200
		CCL							












Sensor	Offset (ft)	Schematic	Description	Len (ft)	OD (in)	Wt (lb)
CCL	18.54		titan	1.00	1.69	2.00
			SNDX_CCL-SNDX_3_13_CCL (000001) CSS Gamma Ray/CCL (CCL Sector)	1.92	3.13	11.02

			SONDEX	2.71	2.75	32.00
WVFS3FT	10.78					
WVFS1	10.78		SNDX_RBT-007 (000001) Radial Bond Tool - Analog 3 1/8	9.47	3.13	140.00
WVFS2	10.78					
WVFS3	10.78					
WVFS4	10.78					
WVFS5	10.78					
WVFS6	10.78					
WVFS7	10.78					
WVFS8	10.78					
WVFS5FT	9.78					
			SONDEX	2.71	2.75	32.00
GR	2.03		SNDX_GR-SNDX_3_13_GR (000001) Sondex Production Gamma Ray	2.94	3.13	22.05
Dataset: e_a10ecbl.db: field/well/run1/pass4 Total Length: 20.75 ft Total Weight: 239.07 lb O.D. 3.13 in						

	Company	ENCANA OIL & GAS (USA) INC.
	Well	FEE 3-16 (A10E)
	Field	MAMM CREEK
	County	GARFIELD
	State	COLORADO