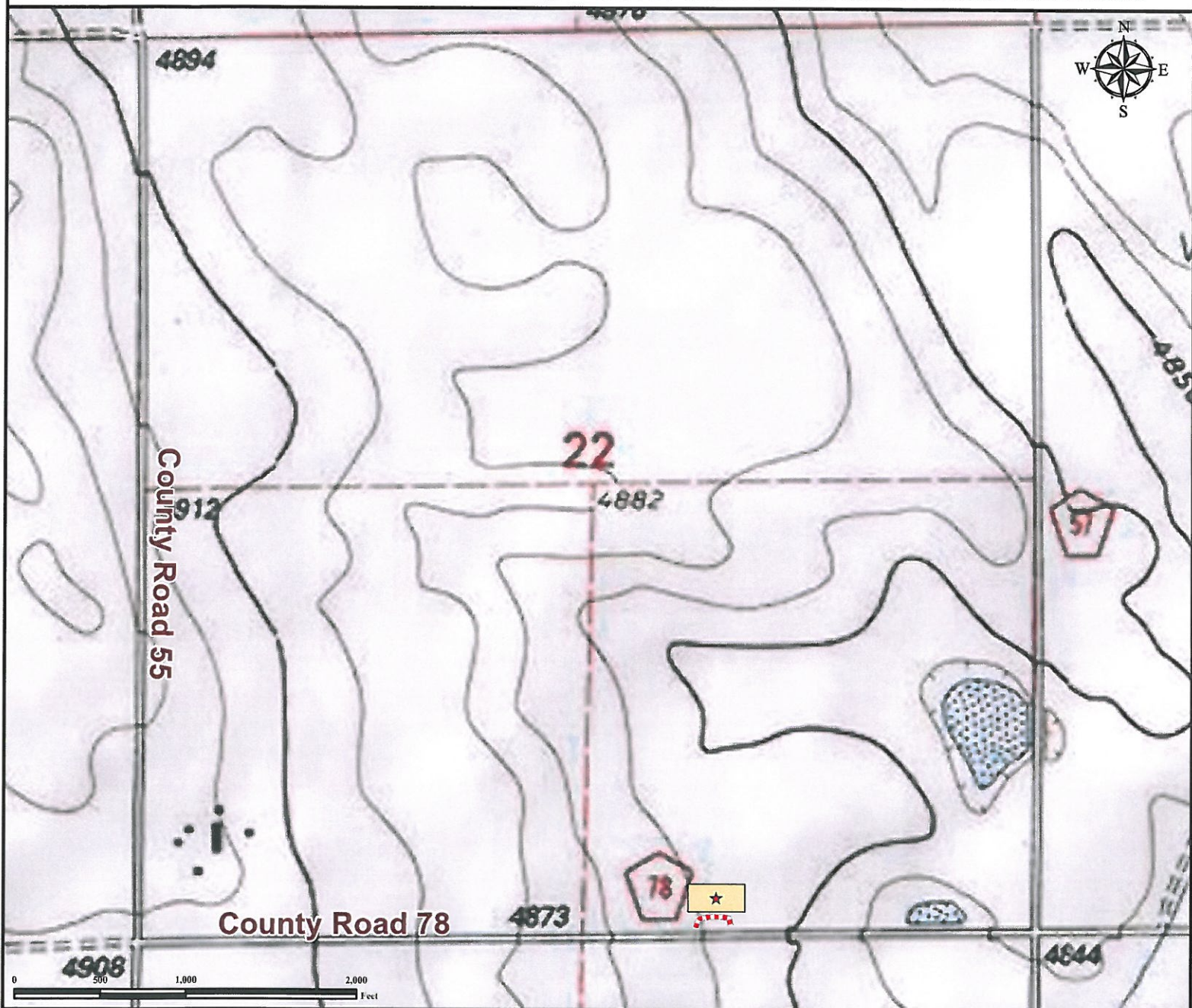


Access Road Map

IRVINE 15-22 FACILITY

SW¼ SE¼ SECTION 22, TOWNSHIP 7 NORTH, RANGE 64 WEST OF THE 6TH PRINCIPAL MERIDIAN





From Eaton, CO: From the intersection of US Highway 85 and Co Rd 74, go East on Co Rd 74 ± 8.8 miles.
Turn Left onto Co Rd 55 and drive ± 2.0 miles.
Turn Right onto Co Rd 78 and drive ± 0.7 miles.
Turn Left onto Proposed Access road and proceed north ± 0.01 miles to proposed facilities location.


Facility size has been exaggerated to be clearly visible at this scale.

Total Distance from Eaton, CO to proposed facility location is ± 11.56 miles.

Legend

-  Proposed Facilities
-  Proposed Access Road

Reference Location

** Reference Point  (NAD 83)**

Lat: 40.551739° Long: -104.532995° (NAD83)
Elevation: 4862 Feet



Use our resources to find yours!
www.petro-fs.com
(303) 928-7128

Field Date: 05/18/2011
Drafting Date: 07/12/2011
Drafter: DMM
Checked By: BHF

Data Sources:
- Topo courtesy of USGS

Prepared for:

 BAYSWATER
EXPLORATION AND PRODUCTION, LLC