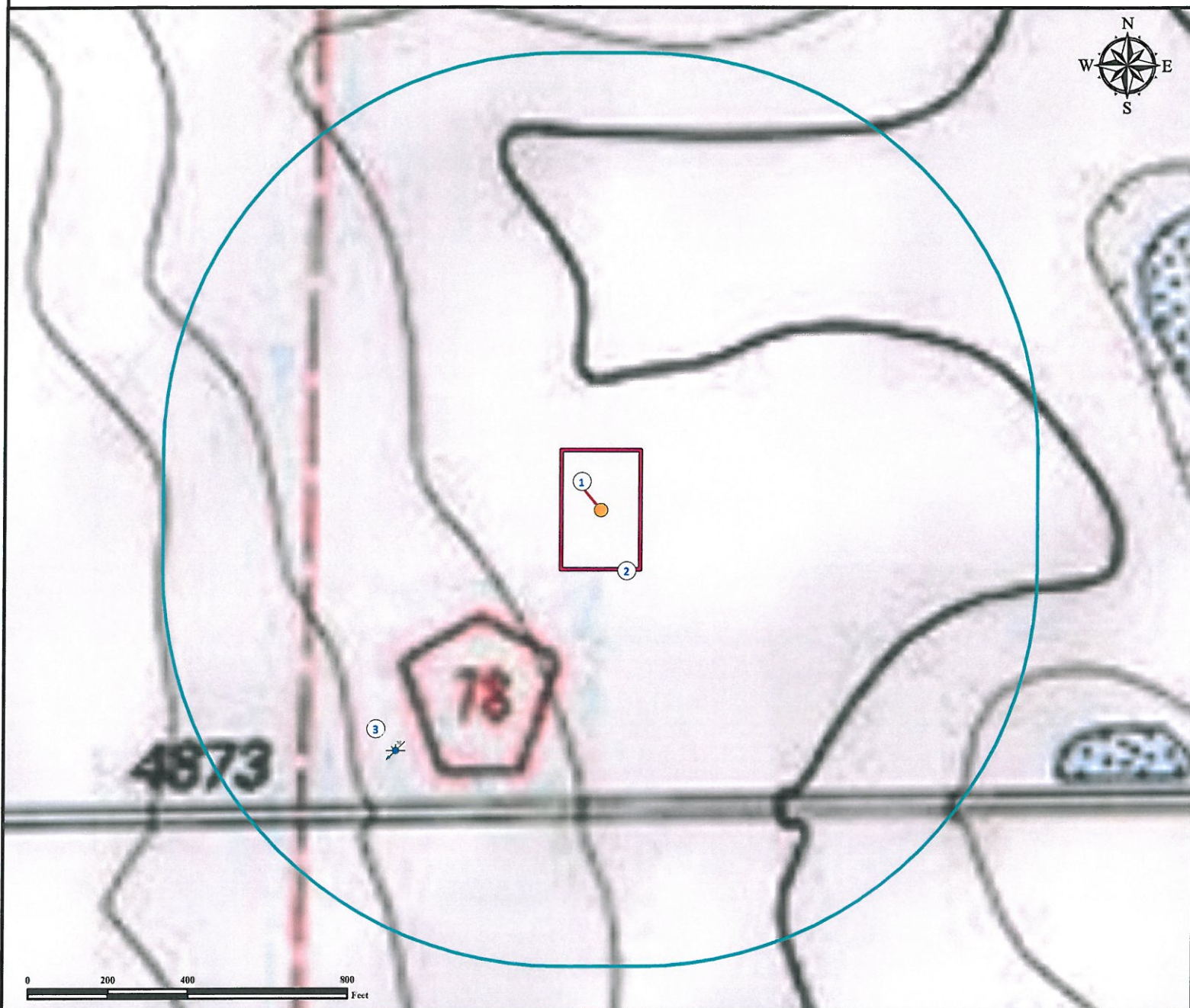


# Hydrology Map

## IRVINE 15-22

SW¼ SE¼ SECTION 22, TOWNSHIP 7 NORTH, RANGE 64 WEST OF THE 6TH PRINCIPAL MERIDIAN



1. Proposed Well IRVINE 15-22.
2. Operational Disturbance Area.
3. Water Well (#235609) is  $\pm 787'$  SW.

### Legend

-  Water Well
-  Disturbance Area
-  Proposed Well
-  1000' Radius

### Reference Location

\*\* All Measurements are Made from  
Reference Well IRVINE 15-22\*\*  
Lat: 40.553497° Long: -104.533051° (NAD83)  
Elevation: 4857 Feet

Surface Use: Improved Pasture



Use our resources to find yours!  
[www.petro-fs.com](http://www.petro-fs.com)  
(303) 928-7128

Field Date: 05/18/2011  
Drafting Date: 07/17/2011  
Drafter: DMM  
Checked By: BHF

Data Sources:  
- Topo courtesy of USGS.  
- Water wells courtesy of CDOWR.

Prepared for:

 BAYSWATER  
EXPLORATION AND PRODUCTION, LLC