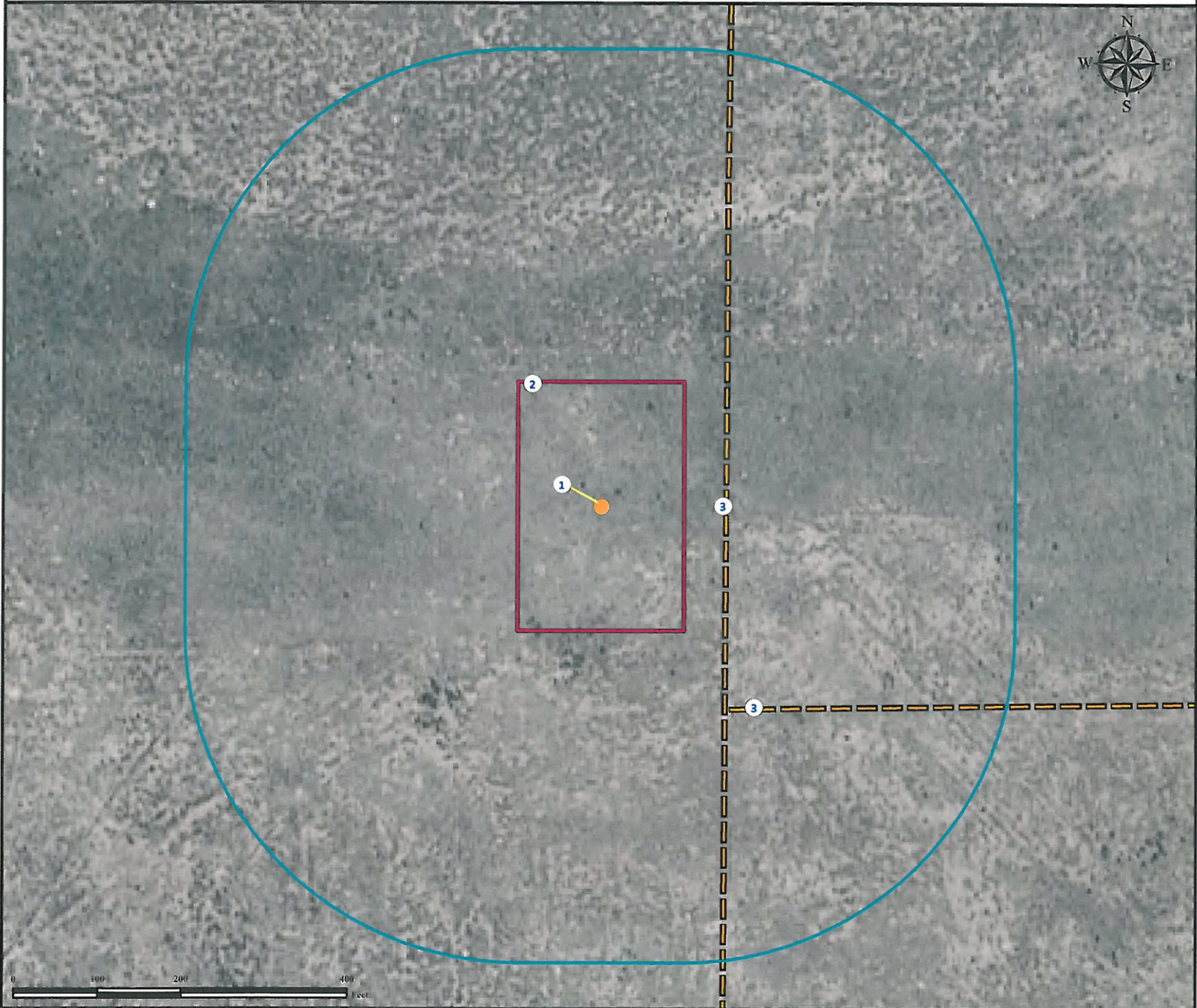


Location Drawing

IRVINE 20-22

NW¼ SE¼ SECTION 22, TOWNSHIP 7 NORTH, RANGE 64 WEST OF THE 6TH PRINCIPAL MERIDIAN



Legend

- Proposed Well
- 400' Radius
- Fence
- Disturbance Area

Reference Location

** All Measurements are Made from
Reference Well IRVINE 20-22**

Lat: 40.555324° Long:-104.531474° (NAD83)
Elevation: 4851 Feet

Surface Use: Improved Pasture



Use our resources to find yours!
www.petro-fs.com
(303) 928-7128

Field Date: 05/18/2011
Drafting Date: 07/12/2011
Drafter: DMM
Checked By: BHF

Data Sources:
- Aerial courtesy of NAIP (2009)

Prepared for:

