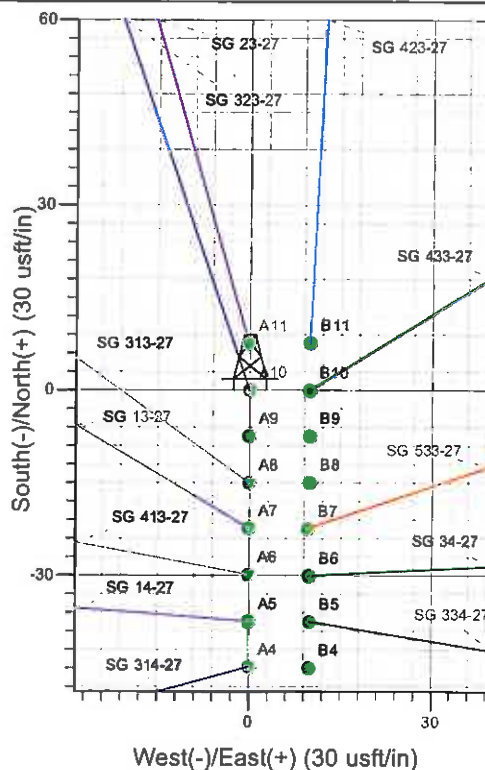
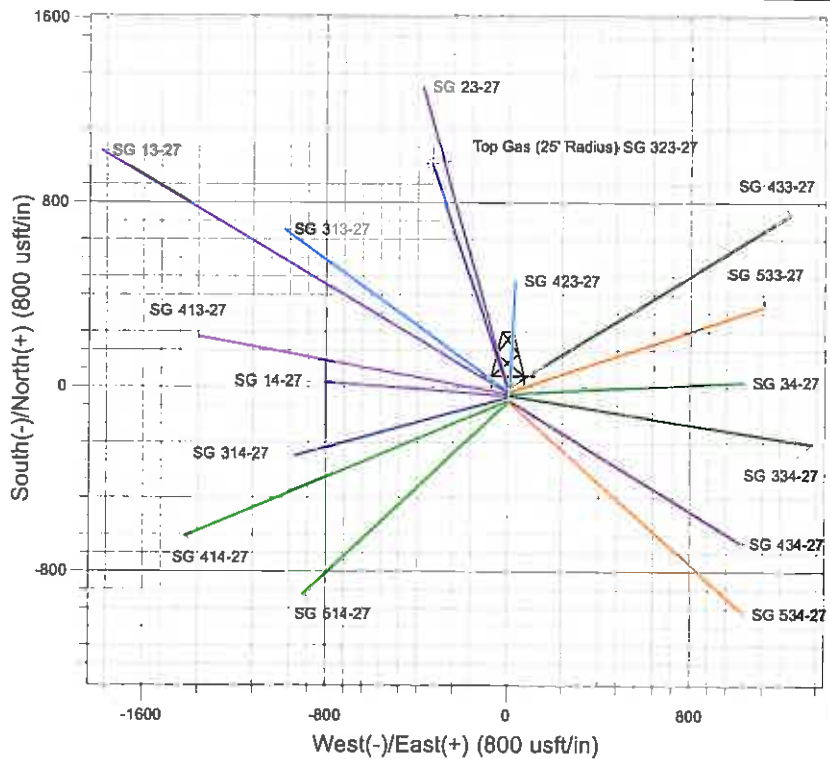
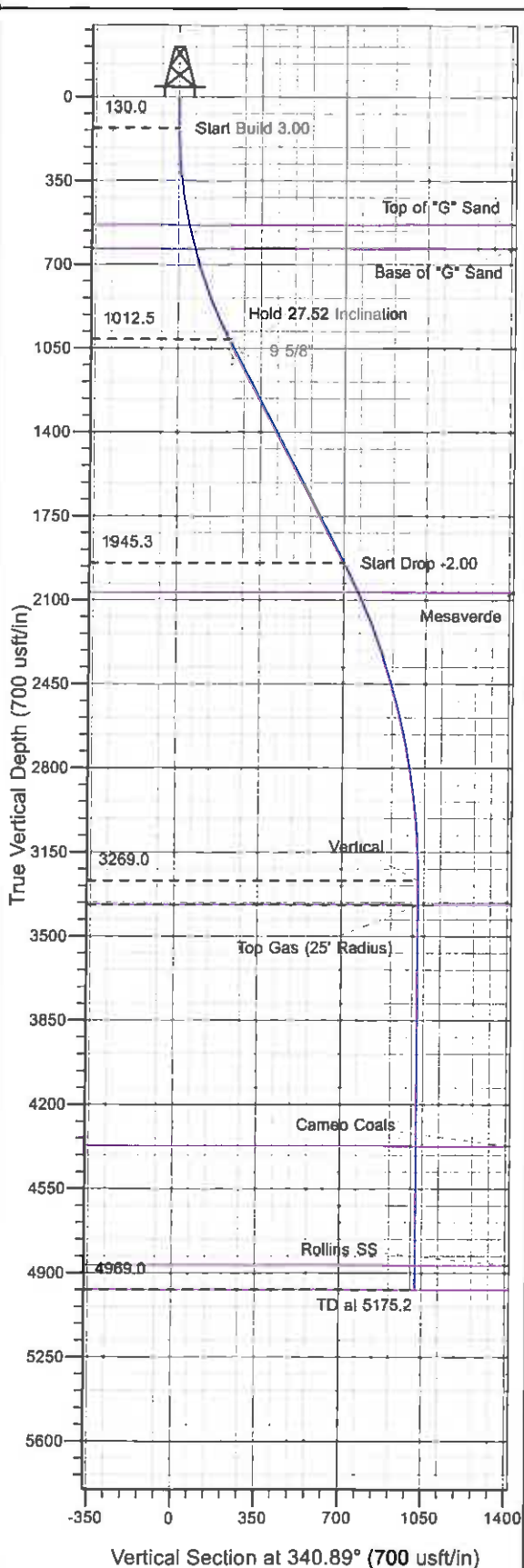




Well Name: SG 323-27
 Surface Location: SG 24-27 Pad
 North American Datum 1983, US State Plane 1983, Colorado Central Zone
 Ground Elevation: 5012.0
 +N/-S +E/-W Northing Easting Latitude Longitude Slot
 0.0 0.0 1582715.10 2265824.00 39° 24' 16.148 N 108° 5' 54.916 W A10
 KELLY BUSHING @ 5036.0usft (H&P 280 (24' RKB) kjs)



Project: SG 27-07S-096W
 Site: SG 24-27 Pad
 Well: SG 323-27
 Plan#2 29Apr11 kjs



Azimuths to True North
 Magnetic North: 10.51°
 Magnetic Field
 Strength: 52338.4snT
 Dip Angle: 65.69°
 Date: 4/26/2010
 Model: IGRF2005-10

ANNOTATIONS

TVD	MD	Inc	Azi	+N/-S	+E/-W	V	Sed	Departure	Annotation
130.0	130.0	0.00	0.00	0.0	0.0	0.0	0.0	0.0	Start Build 3.00
1012.5	1047.4	27.52	340.89	204.2	-70.8	216.1	216.1	0.0	Hold 27.52 Inclination
1945.3	2099.1	27.52	340.89	663.4	-229.9	702.1	702.1	0.0	Start Drop -2.00
3269.0	3475.2	0.00	0.00	969.7	-336.0	1026.3	1026.3	0.0	Vertical
3369.0	3575.2	0.00	0.00	969.7	-336.0	1026.3	1026.3	0.0	Top Gas
4969.0	5175.2	0.00	0.00	969.7	-336.0	1026.3	1026.3	0.0	TD at 5175.2

PICEANCE VLY NAD 83

SG 27-07S-096W

SG 24-27 Pad

SG 323-27 - Slot A10

Wellbore #1

Plan: Plan#2 29Apr11 kjs

Standard Planning Report - Geographic

01 July, 2011

Williams
Planning Report - Geographic

Database:	Compass R5000 WIN AUTH	Local Co-ordinate Reference:	Well SG 323-27 - Slot A10
Company:	PICEANCE VLY NAD 83	TVD Reference:	KELLY BUSHING @ 5036.0usft (H&P 280 (24' RKB) kjs)
Project:	SG 27-07S-096W	MD Reference:	KELLY BUSHING @ 5036.0usft (H&P 280 (24' RKB) kjs)
Site:	SG 24-27 Pad	North Reference:	True
Well:	SG 323-27	Survey Calculation Method:	Minimum Curvature
Wellbore:	Wellbore #1		
Design:	Plan#2 29Apr11 kjs		

Project	SG 27-07S-096W, Garfield County, CO, 27-07S-096W		
Map System:	US State Plane 1983	System Datum:	Mean Sea Level
Geo Datum:	North American Datum 1983		
Map Zone:	Colorado Central Zone		Using geodetic scale factor

Site		SG 24-27 Pad			
Site Position:		Northing:	1,582,647.63 usft	Latitude:	39° 24' 15.481 N
From:	Map	Easting:	2,265,822.00 usft	Longitude:	108° 5' 54.917 W
Position Uncertainty:	0.0 usft	Slot Radius:	13.200 in	Grid Convergence:	-1.639 °

Well	SG 323-27 - Slot A10					
Well Position	+N/-S	0.0 usft	Northing:	1,582,715.10 usft	Latitude:	39° 24' 16.148 N
	+E/-W	0.0 usft	Easting:	2,265,824.00 usft	Longitude:	108° 5' 54.916 W
Position Uncertainty	0.0 usft	Wellhead Elevation:		Ground Level:	5,012.0 usft	

Wellbore	Wellbore #1				
Magnetics	Model Name	Sample Date	Declination (°)	Dip Angle (°)	Field Strength (nT)
	IGRF2005-10	4/26/2010	10.511	65.686	52,338

Design	Plan#2 29Apr11 kjs			
Audit Notes:				
Version:	Phase:	PLAN	Tie On Depth:	0.0
Vertical Section:	Depth From (TVD) (usft)	+N/-S (usft)	+E/-W (usft)	Direction (°)
	0.0	0.0	0.0	340.89

Plan Sections										
Measured Depth (usft)	Inclination (°)	Azimuth (°)	Vertical Depth (usft)	+N/-S (usft)	+E/-W (usft)	Dogleg Rate (°/100usft)	Build Rate (°/100usft)	Turn Rate (°/100usft)	TFO (°)	Target
0.0	0.00	0.00	0.0	0.0	0.0	0.00	0.00	0.00	0.000	
130.0	0.00	0.00	130.0	0.0	0.0	0.00	0.00	0.00	0.000	
1,047.4	27.52	340.89	1,012.5	204.2	-70.8	3.00	3.00	0.00	340.890	
2,099.1	27.52	340.89	1,945.3	663.4	-229.9	0.00	0.00	0.00	0.000	
3,475.2	0.00	0.00	3,269.0	969.7	-336.0	2.00	-2.00	0.00	180.000	
3,575.2	0.00	0.00	3,369.0	969.7	-336.0	0.00	0.00	0.00	0.000	Top Gas (25' Radius)
5,175.2	0.00	0.00	4,969.0	969.7	-336.0	0.00	0.00	0.00	0.000	

Williams
Planning Report - Geographic

Database:	Compass R5000 WIN AUTH	Local Co-ordinate Reference:	Well SG 323-27 - S101 A10
Company:	PICEANCE VLY NAD 83	TVD Reference:	KELLY BUSHING @ 5036.0usft (H&P 280 (24' RKB) kjs)
Project:	SG 27-07S-096W	MD Reference:	KELLY BUSHING @ 5036.0usft (H&P 280 (24' RKB) kjs)
Site:	SG 24-27 Pad	North Reference:	True
Well:	SG 323-27	Survey Calculation Method:	Minimum Curvature
Wellbore:	Wellbore #1		
Design:	Plan#2 29Apr11 kjs		

Planned Survey									
Measured Depth (usft)	Inclination (°)	Azimuth (°)	Vertical Depth (usft)	+N/-S (usft)	+E/-W (usft)	Map Northing (usft)	Map Easting (usft)	Latitude	Longitude
0.0	0.00	0.00	0.0	0.0	0.0	1,582,715.10	2,265,824.00	39° 24' 16.148 N	108° 5' 54.916 W
130.0	0.00	0.00	130.0	0.0	0.0	1,582,715.10	2,265,824.00	39° 24' 16.148 N	108° 5' 54.916 W
Start Build 3.00									
538.1	12.24	340.89	535.0	41.0	-14.2	1,582,756.53	2,265,810.96	39° 24' 16.554 N	108° 5' 55.097 W
Top of "G" Sand									
641.1	15.33	340.89	635.0	64.2	-22.3	1,582,779.93	2,265,803.59	39° 24' 16.783 N	108° 5' 55.199 W
Base of "G" Sand									
1,047.4	27.52	340.89	1,012.5	204.2	-70.8	1,582,921.23	2,265,759.12	39° 24' 18.167 N	108° 5' 55.817 W
Hold 27.52 Inclination									
1,147.0	27.52	340.89	1,100.9	247.7	-85.8	1,582,965.14	2,265,745.30	39° 24' 18.596 N	108° 5' 56.009 W
9 5/8"									
2,099.1	27.52	340.89	1,945.3	663.4	-229.9	1,583,384.79	2,265,613.22	39° 24' 22.705 N	108° 5' 57.844 W
Start Drop -2.00									
2,237.0	24.76	340.89	2,069.0	720.8	-249.7	1,583,442.72	2,265,594.99	39° 24' 23.272 N	108° 5' 58.097 W
Mesaverde									
3,475.2	0.00	0.00	3,269.0	969.7	-336.0	1,583,694.00	2,265,515.90	39° 24' 25.733 N	108° 5' 59.196 W
Vertical									
3,575.2	0.00	0.00	3,369.0	969.7	-336.0	1,583,694.00	2,265,515.90	39° 24' 25.733 N	108° 5' 59.196 W
Top Gas - Approx. Top Gas - Top Gas (25' Radius) SG 323-27									
4,579.2	0.00	0.00	4,373.0	969.7	-336.0	1,583,694.00	2,265,515.90	39° 24' 25.733 N	108° 5' 59.196 W
Cameo Coals									
5,075.2	0.00	0.00	4,869.0	969.7	-336.0	1,583,694.00	2,265,515.90	39° 24' 25.733 N	108° 5' 59.196 W
Rollins SS									
5,175.2	0.00	0.00	4,969.0	969.7	-336.0	1,583,694.00	2,265,515.90	39° 24' 25.733 N	108° 5' 59.196 W
TD at 5175.2 - TD									

Design Targets									
Target Name	Dip Angle (°)	Dip Dir. (°)	TVD (usft)	+N/-S (usft)	+E/-W (usft)	Northing (usft)	Easting (usft)	Latitude	Longitude
- hit/miss target									
- Shape									
Top Gas (25' Radius) SC	0.00	0.00	3,369.0	969.7	-336.0	1,583,694.00	2,265,515.90	39° 24' 25.733 N	108° 5' 59.196 W
- plan hits target center									
- Circle (radius 25.0)									

Casing Points				
Measured Depth (usft)	Vertical Depth (usft)	Name	Casing Diameter (in)	Hole Diameter (in)
1,147.0	1,100.9	9 5/8"	9.625	12.250

Williams
Planning Report - Geographic

Database:	Compass R5000 WIN AUTH	Local Co-ordinate Reference:	Well SG 323-27 - Slot A10
Company:	PICEANCE VLY NAD 83	TVD Reference:	KELLY BUSHING @ 5036.0usft (H&P 280 (24' RKB) kjs)
Project:	SG 27-07S-096W	MD Reference:	KELLY BUSHING @ 5036.0usft (H&P 280 (24' RKB) kjs)
Site:	SG 24-27 Pad	North Reference:	True
Well:	SG 323-27	Survey Calculation Method:	Minimum Curvature
Wellbore:	Wellbore #1		
Design:	Plan#2 29Apr11 kjs		

Formations						
Measured Depth (usft)	Vertical Depth (usft)	Name	Lithology	Dip (")	Dip Direction (")	
538.1	535.0	Top of "G" Sand				
641.1	635.0	Base of "G" Sand				
2,237.0	2,069.0	Mesaverde				
3,575.2	3,369.0	Approx. Top Gas				
4,579.2	4,373.0	Cameo Coals				
5,075.2	4,869.0	Rollins SS				
5,175.2	4,969.0	TD				

Plan Annotations					
Measured Depth (usft)	Vertical Depth (usft)	Local Coordinates			
		+N/-S (usft)	+E/-W (usft)	Comment	
130.0	130.0	0.0	0.0	Start Build 3.00	
1,047.4	1,012.5	204.2	-70.8	Hold 27.52 Inclination	
2,099.1	1,945.3	663.4	-229.9	Start Drop -2.00	
3,475.2	3,269.0	969.7	-336.0	Vertical	
3,575.2	3,369.0	969.7	-336.0	Top Gas	
5,175.2	4,969.0	969.7	-336.0	TD at 5175.2	