

WILLIAMS PRODUCTION RMT COMPANY

T7S, R96W, 6th P.M.

Well location, WILLIAMS SG 323-27, located as shown in the SE 1/4 SW 1/4 of Section 27, T7S, R96W, 6th P.M., Garfield County, Colorado.

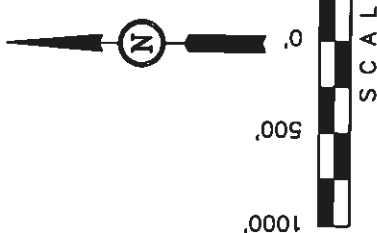
BASIS OF ELEVATION

SPOT ELEVATION AT THE NORTHWEST CORNER OF SECTION 30, T5S, R95W, 6th P.M. TAKEN FROM THE FORKED GULCH QUADRANGLE, COLORADO, GARFIELD COUNTY, 7.5 MINUTE SERIES (TOPOGRAPHICAL MAP) PUBLISHED BY THE UNITED STATES DEPARTMENT OF THE INTERIOR, GEOLOGICAL SURVEY. SAID ELEVATION IS MARKED AS BEING 5966 FEET.

BASIS OF BEARINGS

BASIS OF BEARINGS IS A G.P.S. OBSERVATION.

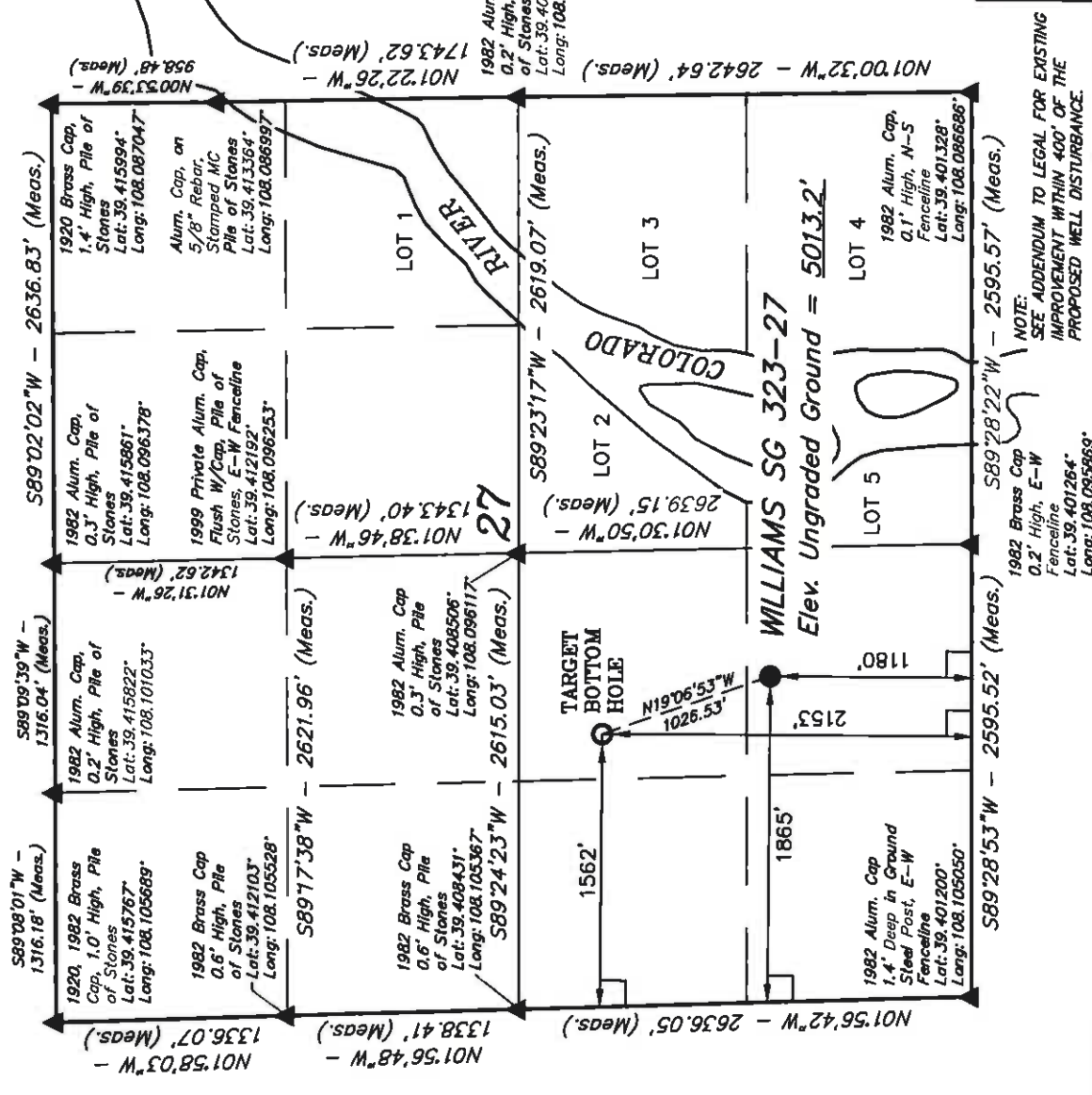
PLAT #1



CERTIFICATE

THIS IS TO CERTIFY THAT THE ABOVE PLAT WAS PREPARED AND LOCATION AS SHOWN WAS STAKED ON THE GROUND FROM FIELD NOTES OF ACTUAL SURVEYS MADE BY ME OR UNDER MY SUPERVISION AND THAT THE SAME ARE TRUE AND CORRECT TO THE BEST OF MY KNOWLEDGE AND BELIEF.

REGISTERED LAND SURVEYOR  
REGISTRATION NO. 187490  
STATE OF COLORADO  
06-05-2011



LEGEND:

- = 90° SYMBOL
- = PROPOSED WELL HEAD.
- ▲ = SECTION CORNERS LOCATED.

UTAH ENGINEERING & LAND SURVEYING	
85 SOUTH 200 EAST - VERNAL UTAH 84078	(435) 789-1017
SCALE 1" = 1000'	DATE SURVEYED: 05-03-10
PARTY B.J. B.B. D.R.B.	DATE DRAWN: 06-02-11
WEATHER COOL	REFERENCES G.L.O. PLAT
FILE	WILLIAMS PRODUCTION RMT COMPANY

NAD 83 (TARGET BOTTOM HOLE)	NAD 83 (SURFACE LOCATION)
LATITUDE = 39°24'25.73" (39.407147)	LATITUDE = 39°24'16.15" (39.404486)
LONGITUDE = 108°05'59.20" (108.099778)	LONGITUDE = 108°05'54.92" (108.098569)
STATE PLANE - COLO. CENTRAL - NAD 83	STATE PLANE - COLO. CENTRAL - NAD 83
N = 1583694.000	N = 1582715.134
E = 2265515.900	E = 2265823.982